

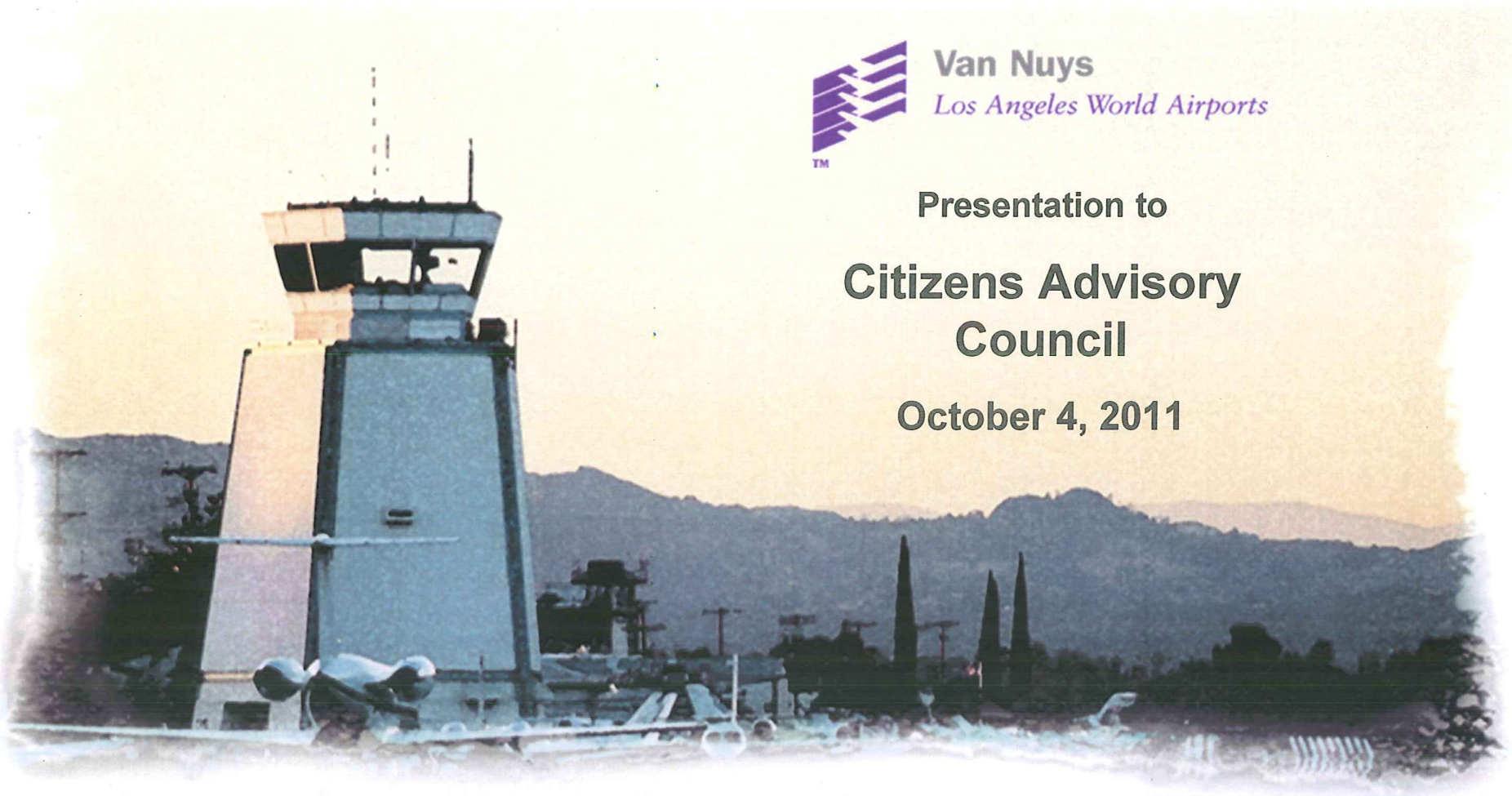
# Van Nuys Airport Draft Updated 2011 and 2016 Part 150 Noise Exposure Maps



Van Nuys  
*Los Angeles World Airports*

Presentation to  
**Citizens Advisory  
Council**

October 4, 2011



## Part 150 “Airport Noise Compatibility Planning”

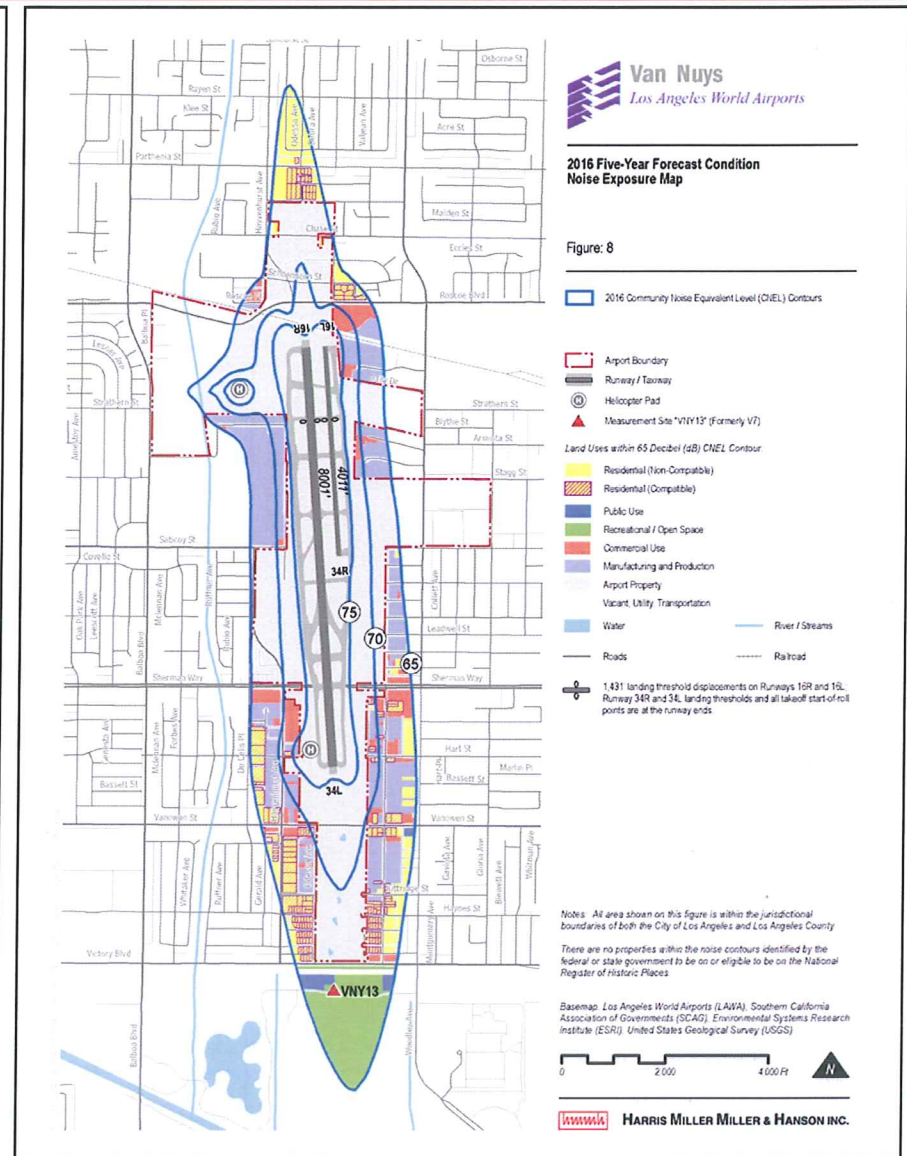
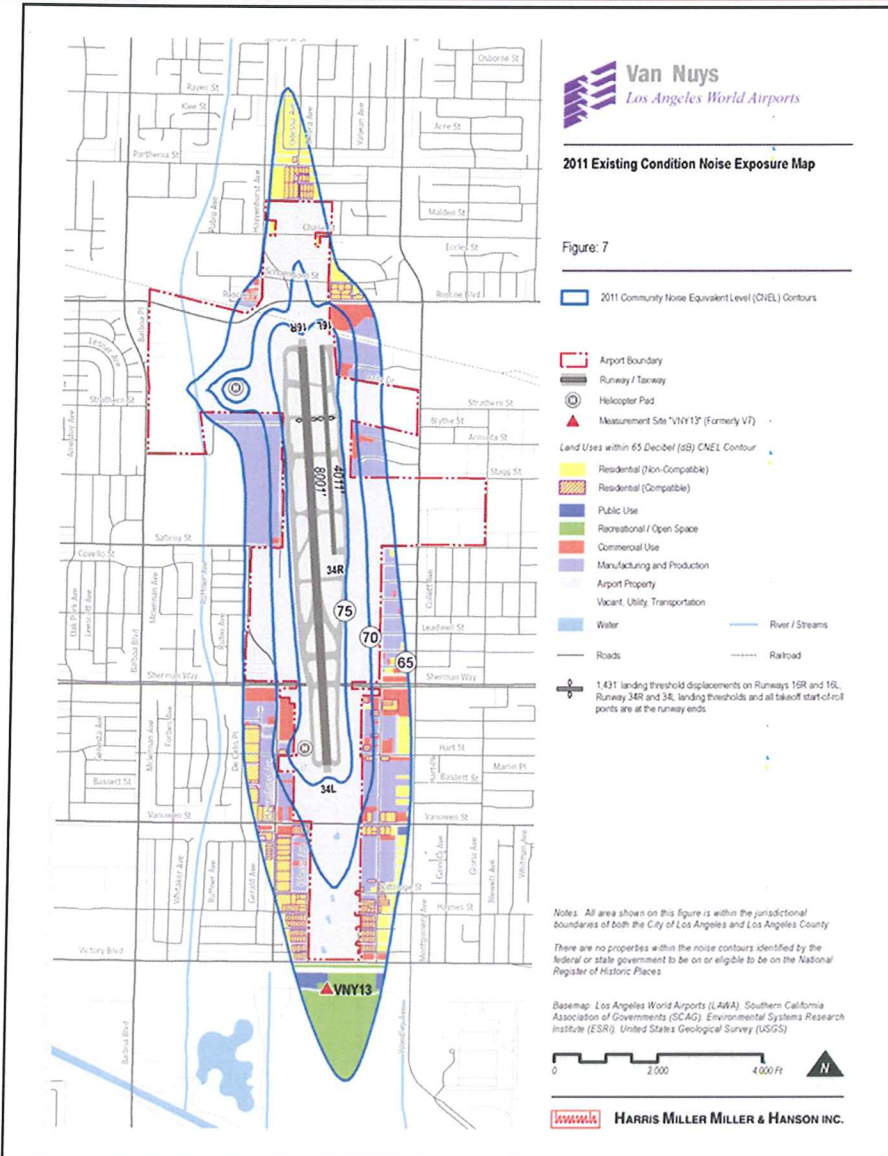
- **Voluntary federal program**
- **Defines standards for airport operators to use in**
  - Documenting noise exposure in the airport environs
  - Establishing programs to minimize noncompatible land uses
- **Noise Exposure Maps (NEMs) submission must include**
  - Annual noise exposure and land use compatibility analyses for existing and five-year forecast conditions
  - FAA accepts use of CNEL contours in California
  - Must use FAA’s Integrated Noise Model to develop contours
  - Documentation of
    - Data sources, analyses, and related FAA approvals
    - Public consultation processes consistent with Part 150 requirements



## **VNY Part 150 Background**

- **In 2009, the FAA approved the 2001 existing condition and 2006 future condition (with mitigation) NEMs from the 2003 Part 150 study submittal**
- **The FAA's 2009 Record of Approval (ROA) for the Part 150 Noise Compatibility Program (NCP) recommended that LAWA update the NEMs "due to their age"**
- **LAWA has completed draft NEMs and associated documentation for forecast 2011 and 2016 conditions**
- **LAWA is undertaking consultation that exceeds Part 150 requirements**
- **Anticipate submission of completed 2011 and 2016 NEMs to FAA in December 2011**

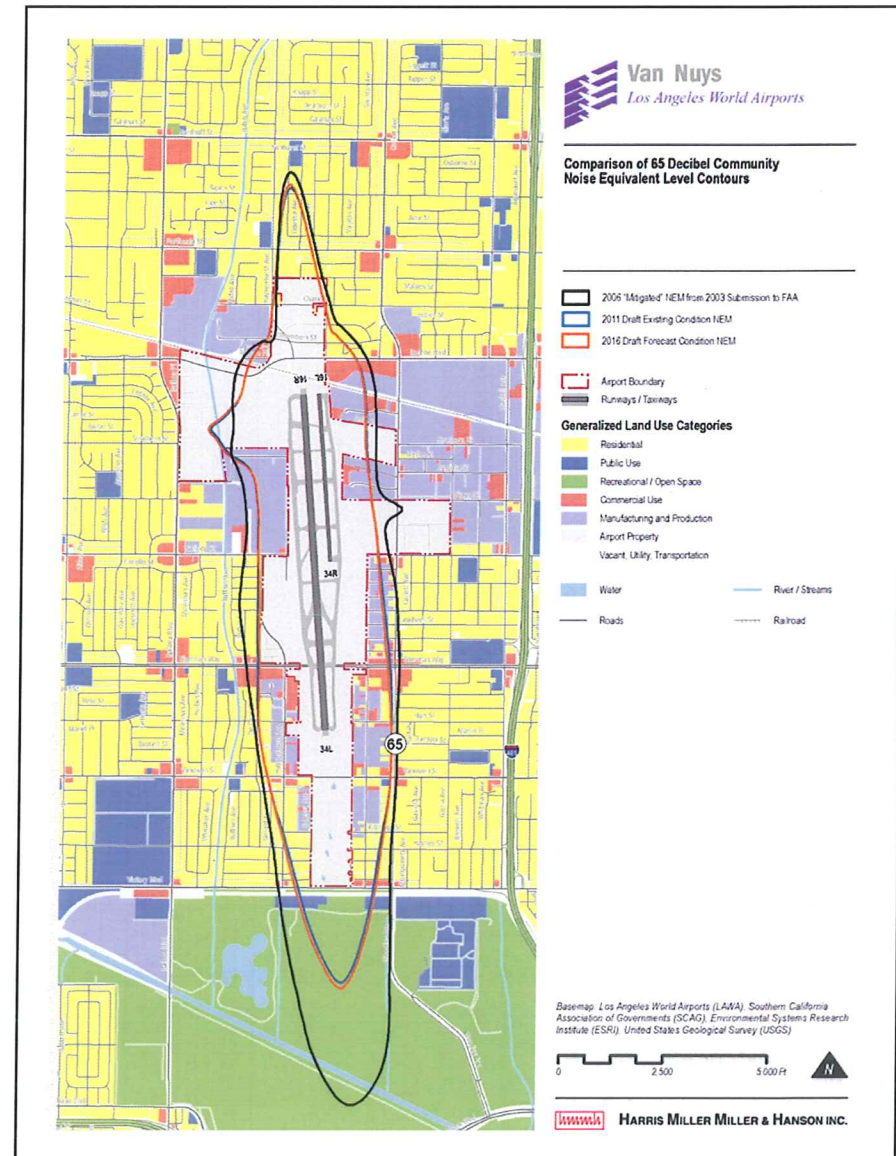
# 2011 and 2016 CNEL contours are very similar





# Comparison of 65 Decibel CNEL for 2011 and 2016 to 2006 “Mitigated” NEM from 2003 Part 150 Submission

- 2011 and 2016 are narrower and shorter, particularly to south
  - East and west side “nodes” reflect use of improved INM ability to model helicopters
- Change is largely due to
  - Quieter jet fleet
  - Use of improved noise abatement departure procedures (NADPs), as verified in “fly-friendly” study



## Population within contours is down from 2006

Year	Land Use Category	Dwellings and Residents within 65 dB CNEL	
		Dwellings	Population
2006	Compatible	1,355	3,388
	Noncompatible	1,347	3,206
	<b>Total</b>	<b>2,702</b>	<b>6,594</b>
2011	Compatible	1,123	3,020
	Noncompatible	878	2,766
	<b>Total</b>	<b>2,001</b>	<b>5,786</b>
2016	Compatible	1,123	3,020
	Noncompatible	899	2,830
	<b>Total</b>	<b>2,022</b>	<b>5,850</b>

- A majority of residents are in compatible (e.g., sound-insulated) dwellings
- Small increase from 2011 to 2016 is due to forecast changes in activity
- There are no non-residential sensitive land uses (e.g., schools, places of worship, etc.) within the 65 dB CNEL contours for 2011 and 2016



## Major Public Consultation Steps

- **October 4, 2011 CAC presentation**
- **30-day public review and comment period (10/10/11 – 11/09/11)**
  - **Published newspaper notices**
  - **Direct notices to**
    - All tenants, with a request to notify subtenants and post copies of the notice
    - All public agencies with land use control within the 65 dB CNEL
    - FAA tower, district office, regional office
    - Los Angeles City Planning Department
    - Los Angeles County Airport Land Use Commission
    - City Council Offices (CD6 and CD12)
- **Draft NEMs are available for review**
  - **At VNY administrative offices**
  - **On LAWA website**

**Comments are due on November 9, 2011**

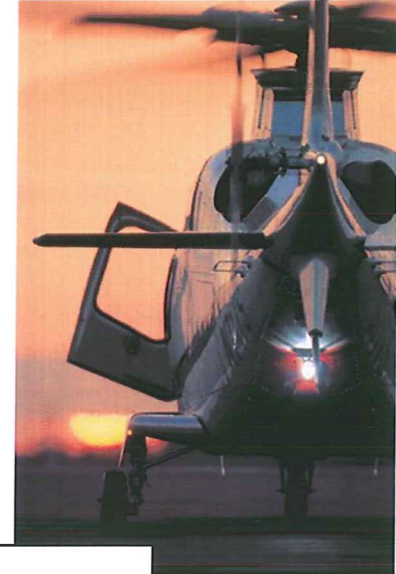
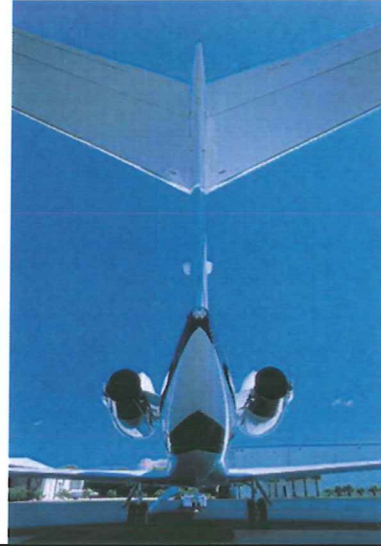
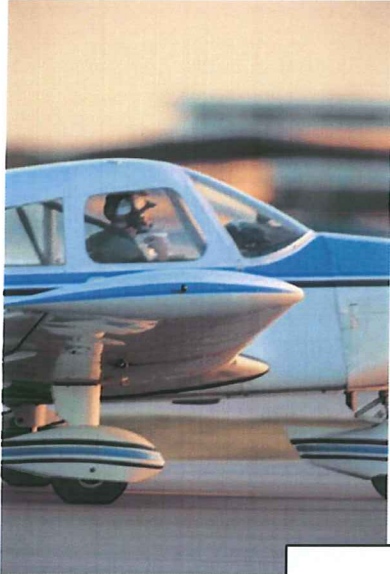
## Next Steps

---

- **Finalize NEM Report Addressing Input Received**
- **Final Submission to FAA – Dec 2011**
- **Final Comprehensive Documentation to Include:**
  - A Description of Opportunities Afforded for Public Review/Comment
  - A Summary of the Comments Received
  - A Description of Changes to NEM Document Based on Comments
  - Copies of All Comments Received (as Appendix)
  - A Certification of the Specific Consultation Requirement



# Discussion



Thank you for your attention.

