



Statistical Update on LAX Aircraft Operations

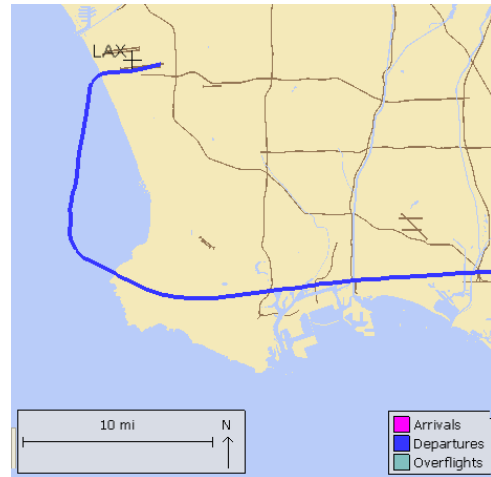
- Palos Verdes Overflights
- Extended North Downwind Approaches

September 15, 2021

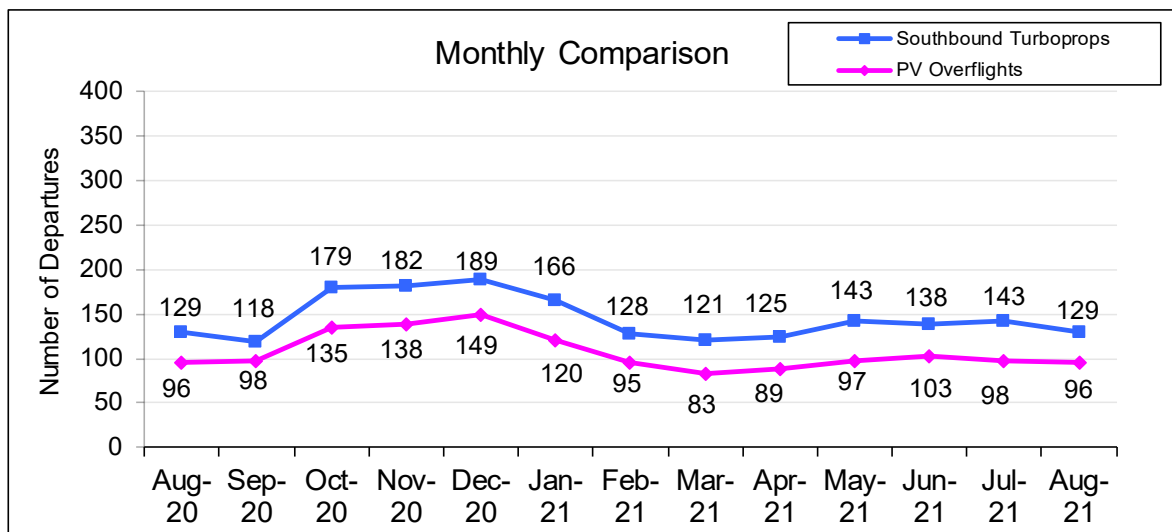
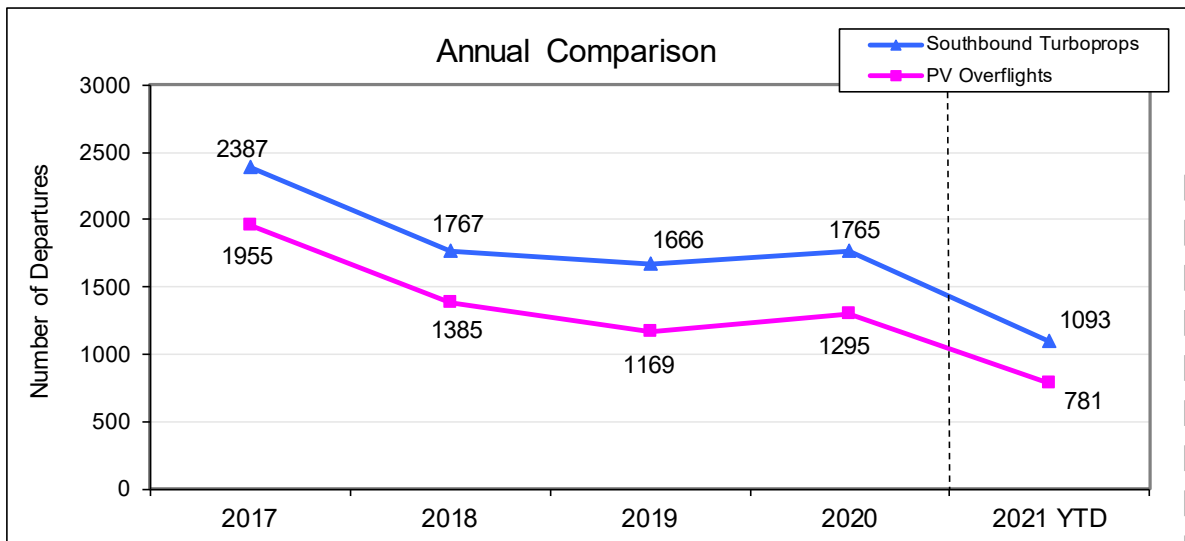
LAX/Community Noise Roundtable

The graphs below show statistics of southbound turboprop aircraft that depart from LAX and fly over the Palos Verdes Peninsula, following an established FAA departure route.

Sample Turboprop Departure Flight Track



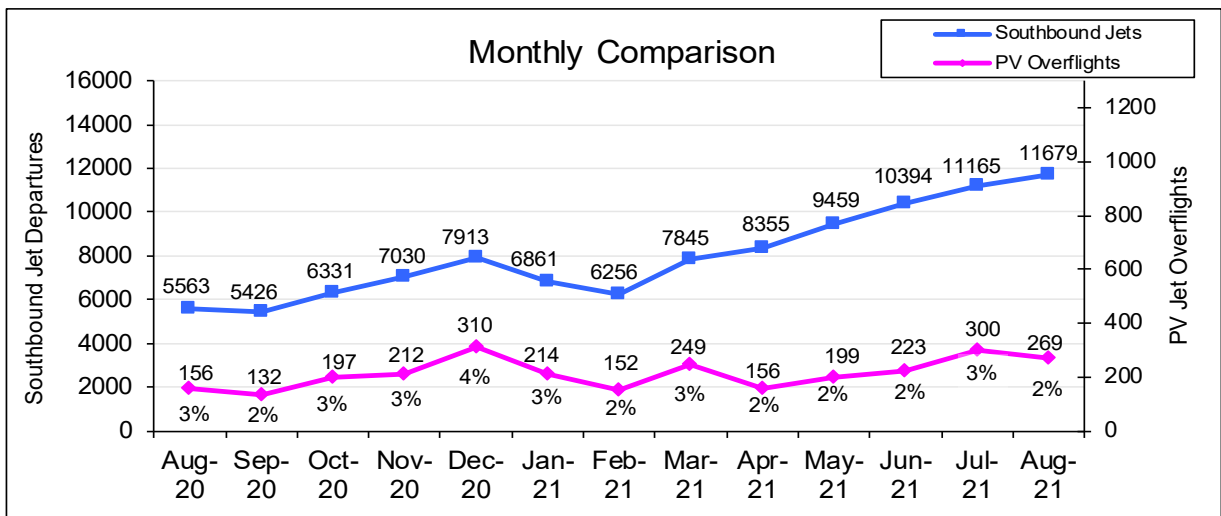
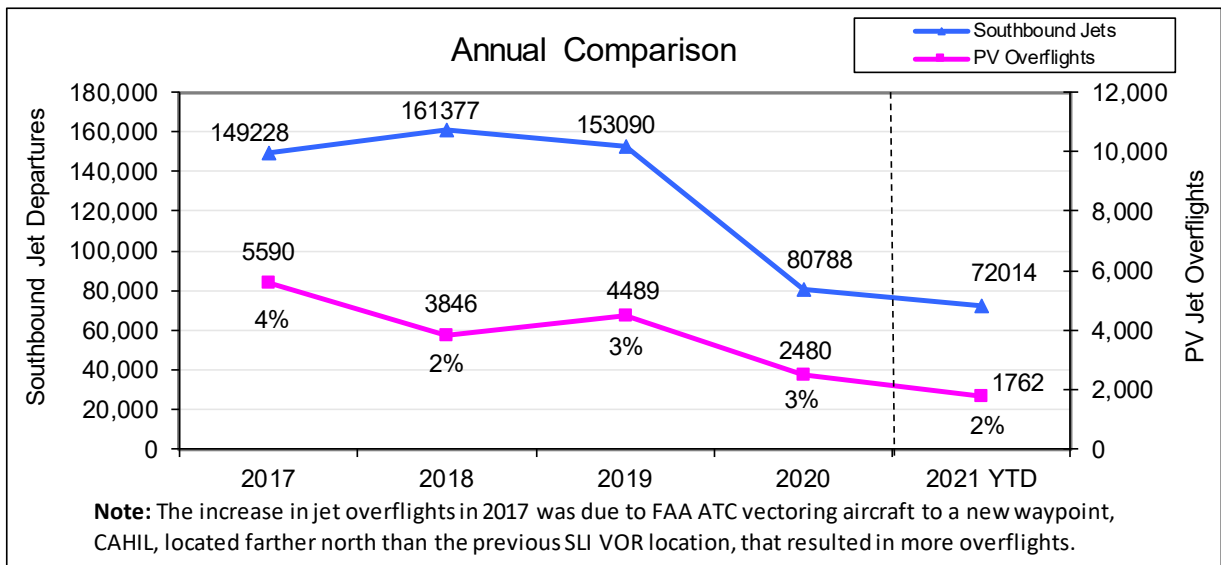
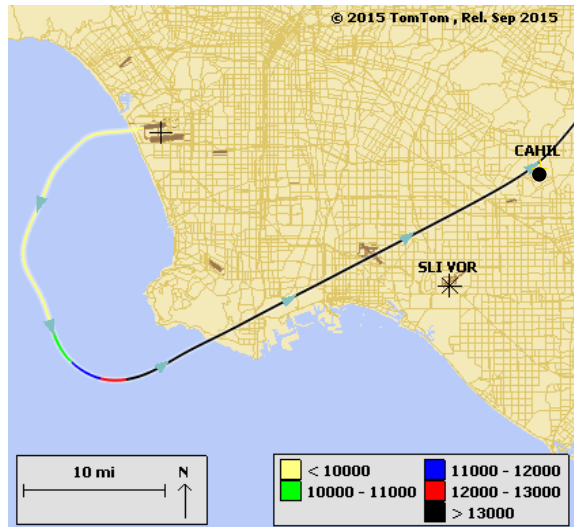
Note: Prior to SkyWest's fleet mix change (turboprop to jet aircraft) in early 2015, the number of southbound turboprop departures were about 800 per month, with around 300 aircraft flying over the PV Peninsula.



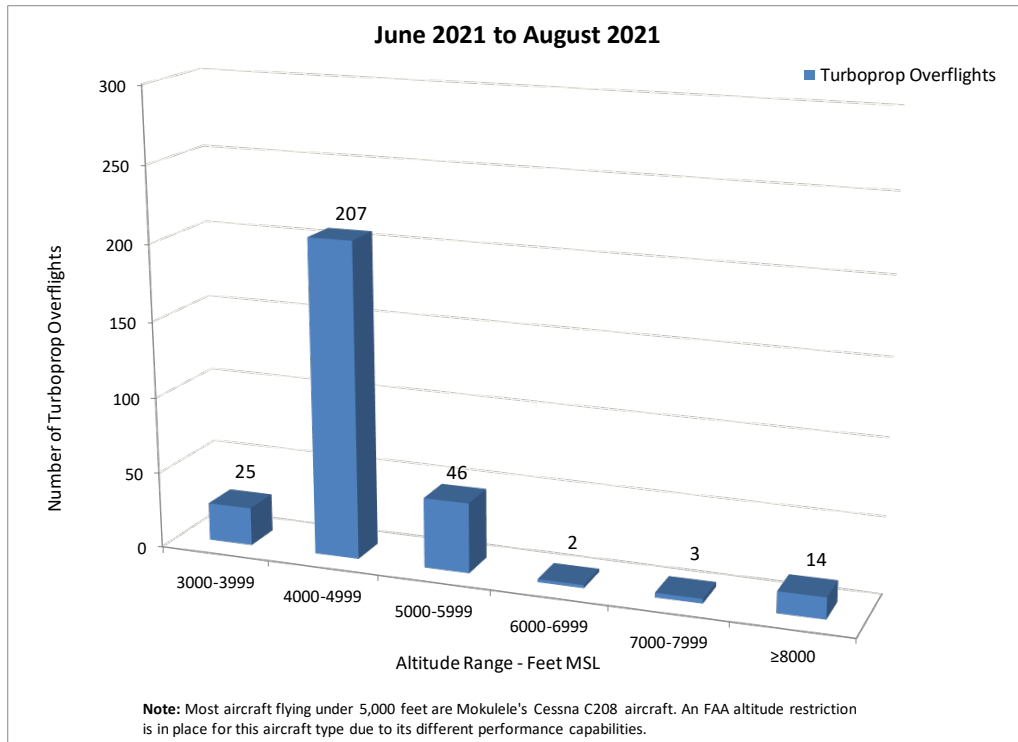
Palos Verdes Peninsula – Jet Overflights

The graphs below show the total number of jets turning south upon departure from LAX and the number of those departures that fly over the Palos Verdes Peninsula.

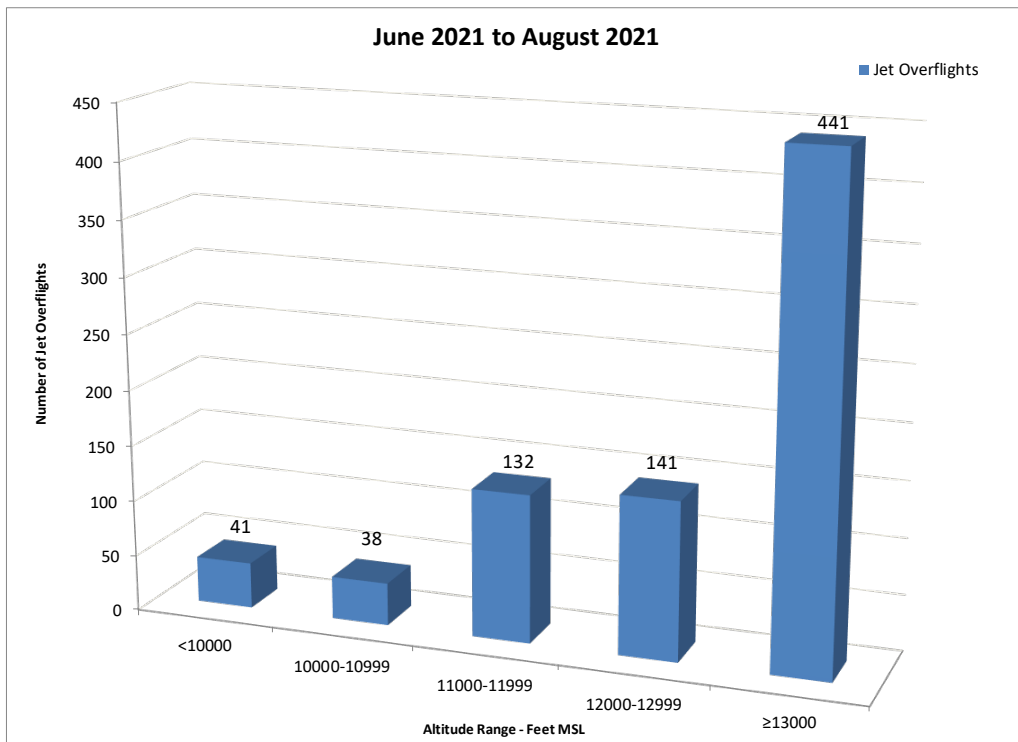
Sample Jet Departure Flight Track Over PV Peninsula



Turboprop Altitudes over PV Peninsula

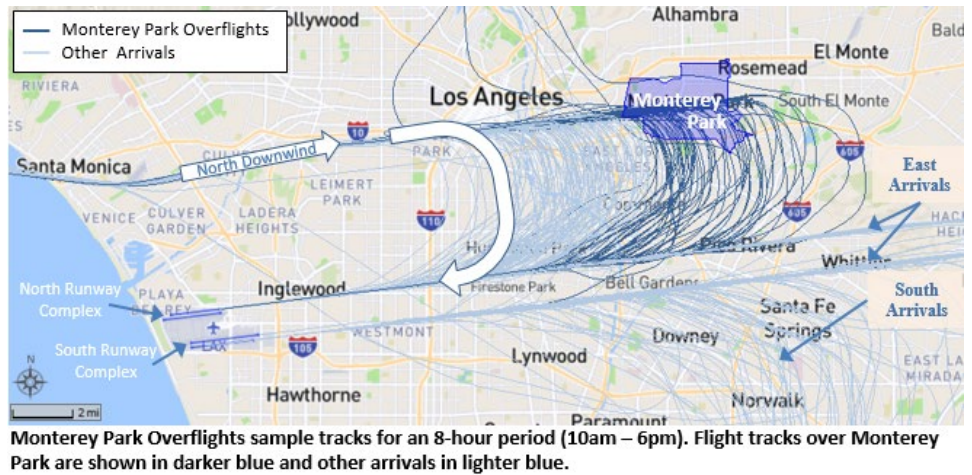


Jet Altitudes over PV Peninsula

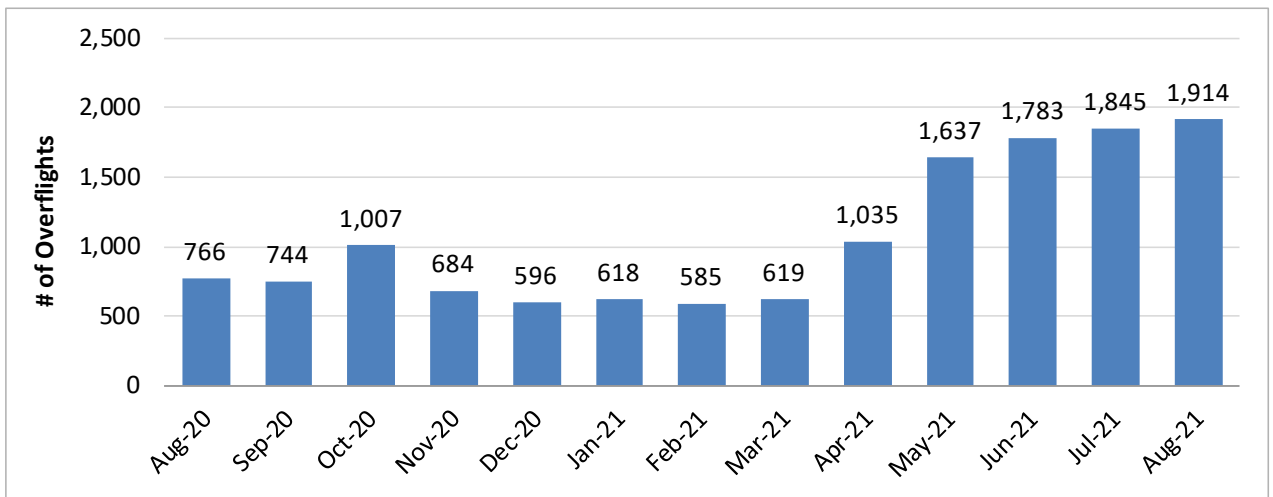


Extended North Downwind Approaches

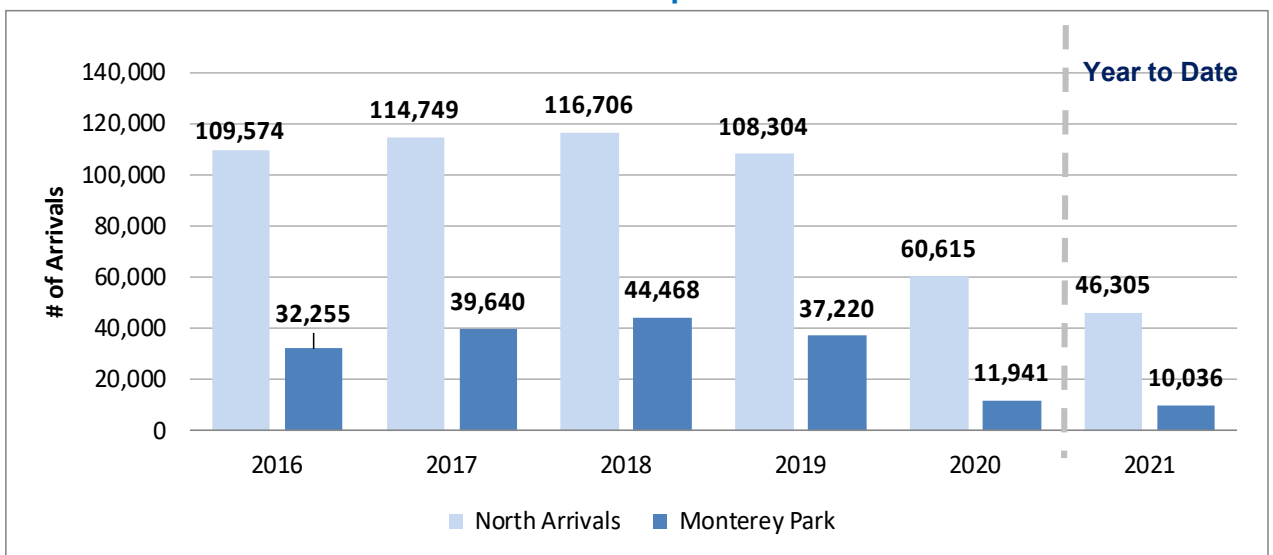
The graphs below show data related to aircraft on the extended north downwind arrival route that fly over Monterey Park.



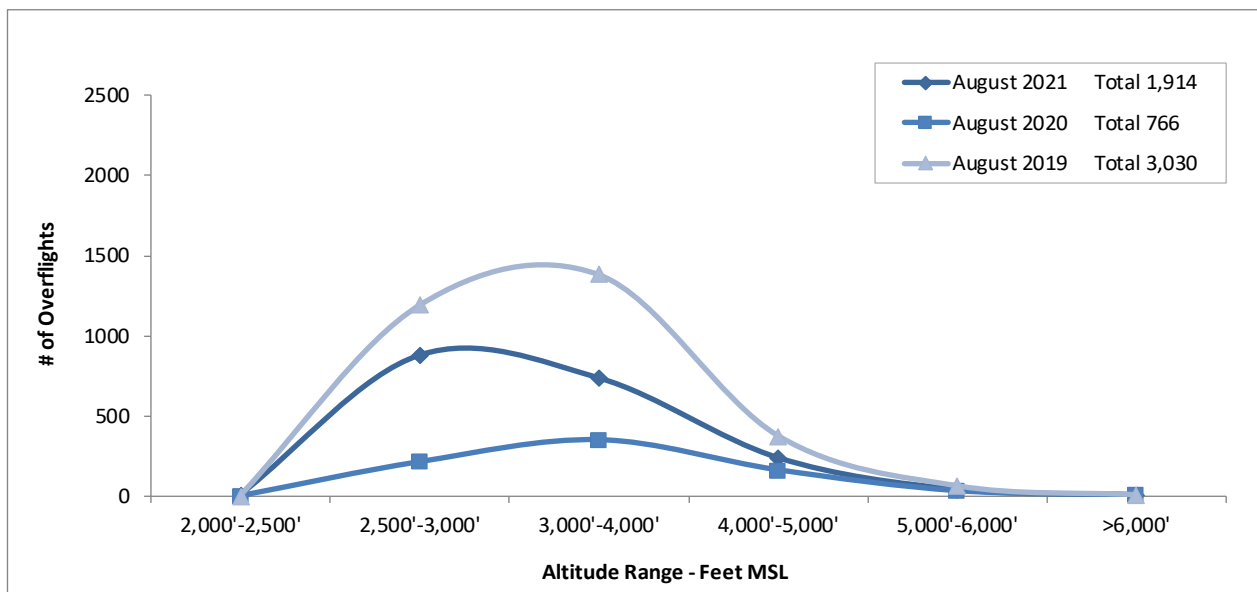
Monthly Comparison



Annual Comparison



Monterey Park Overflights Altitude Comparison



Monterey Park Overflights Time of Day Comparison

