



Statistical Update on LAX Aircraft Operations

July 10, 2013

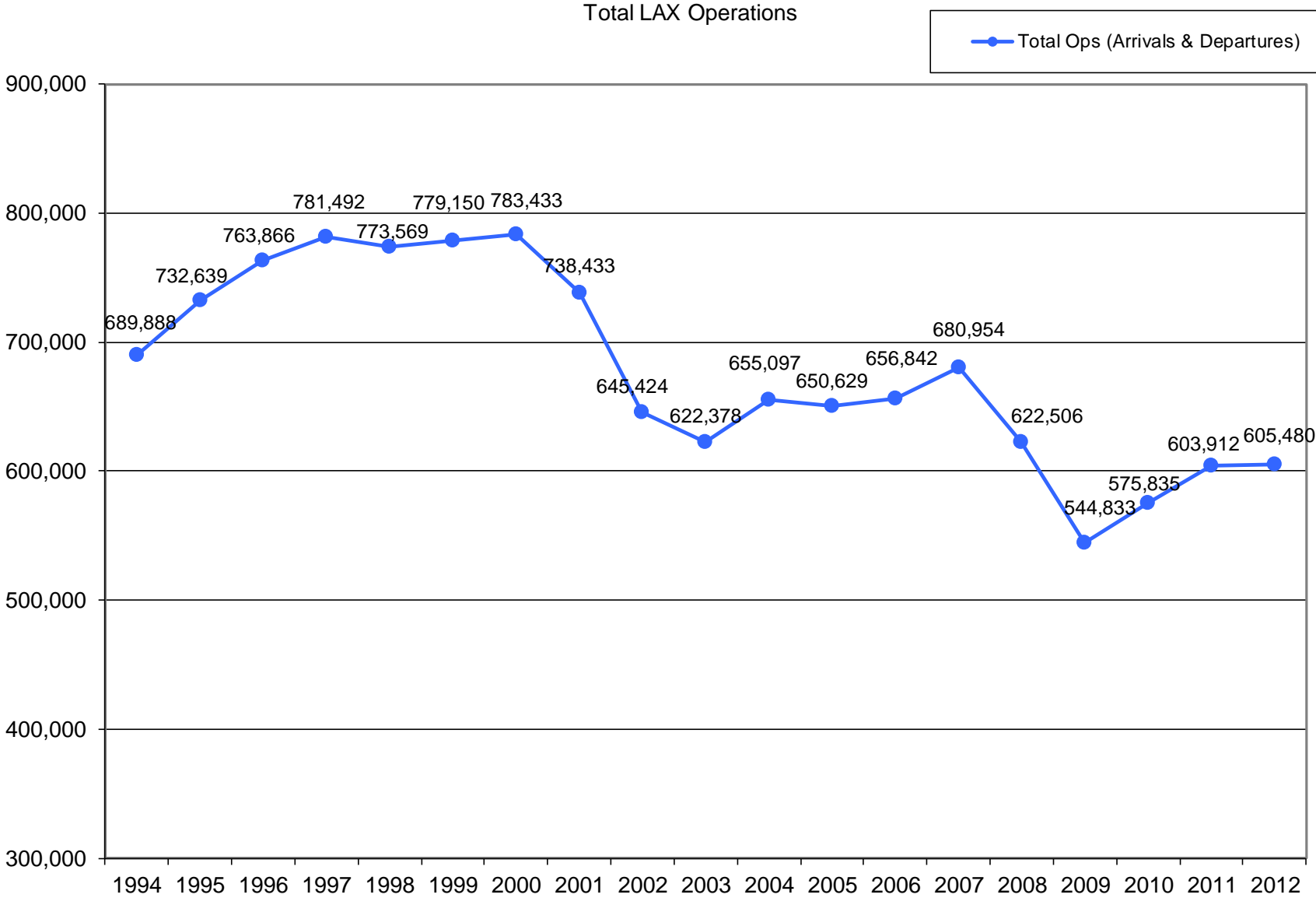
LAX/Community Noise Roundtable

Overview

Statistical information on the following operations:

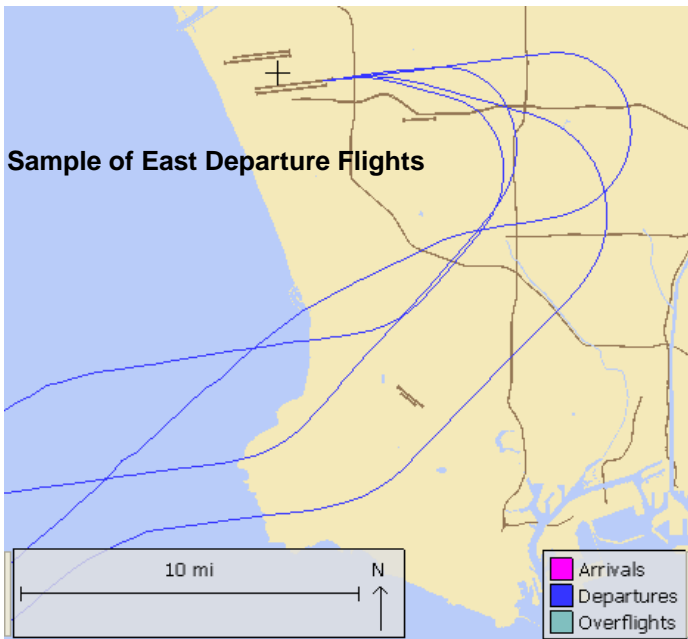
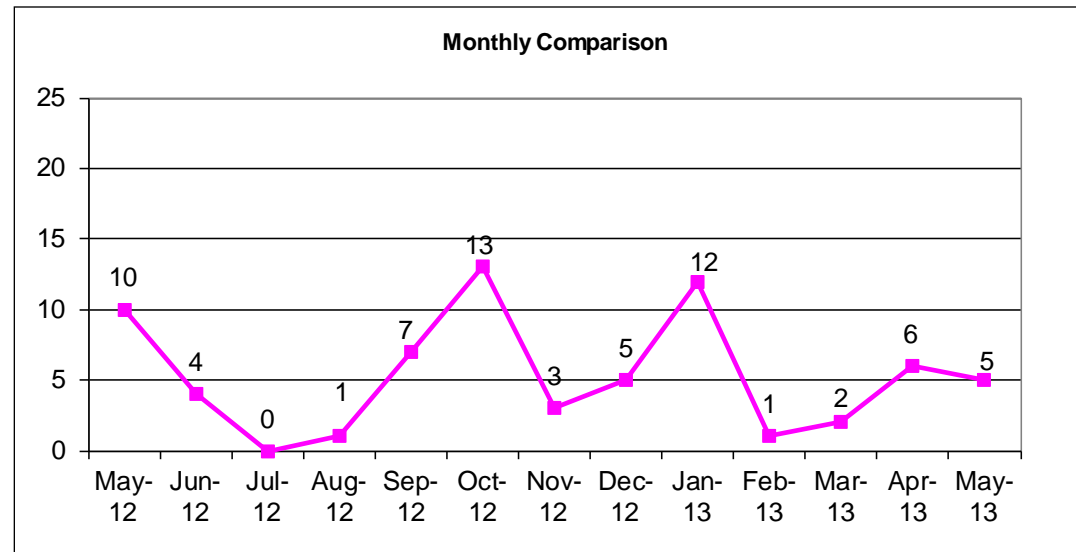
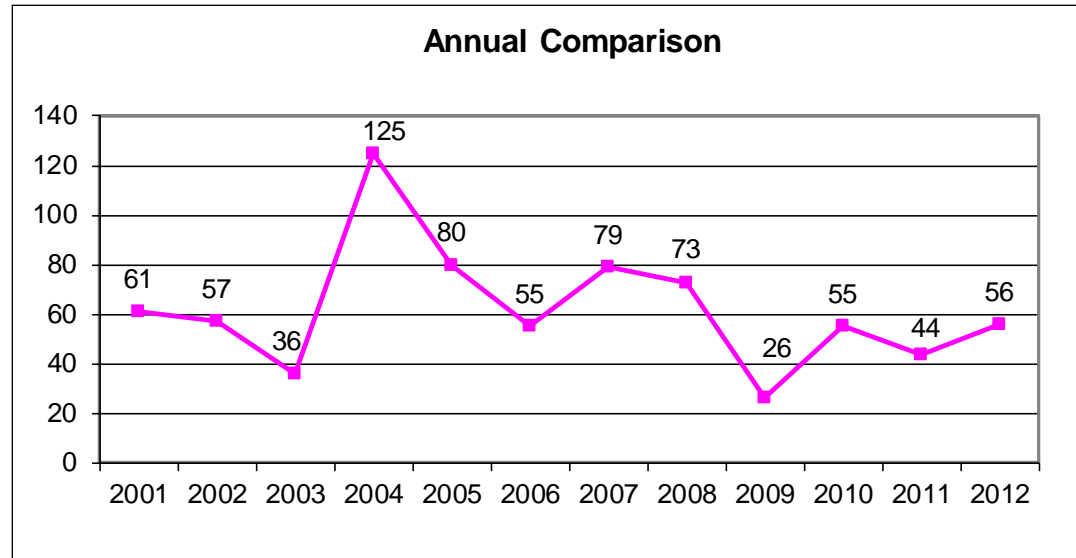
- East Departures
- Early Turns
- Go-arounds

Total Operations Comparison

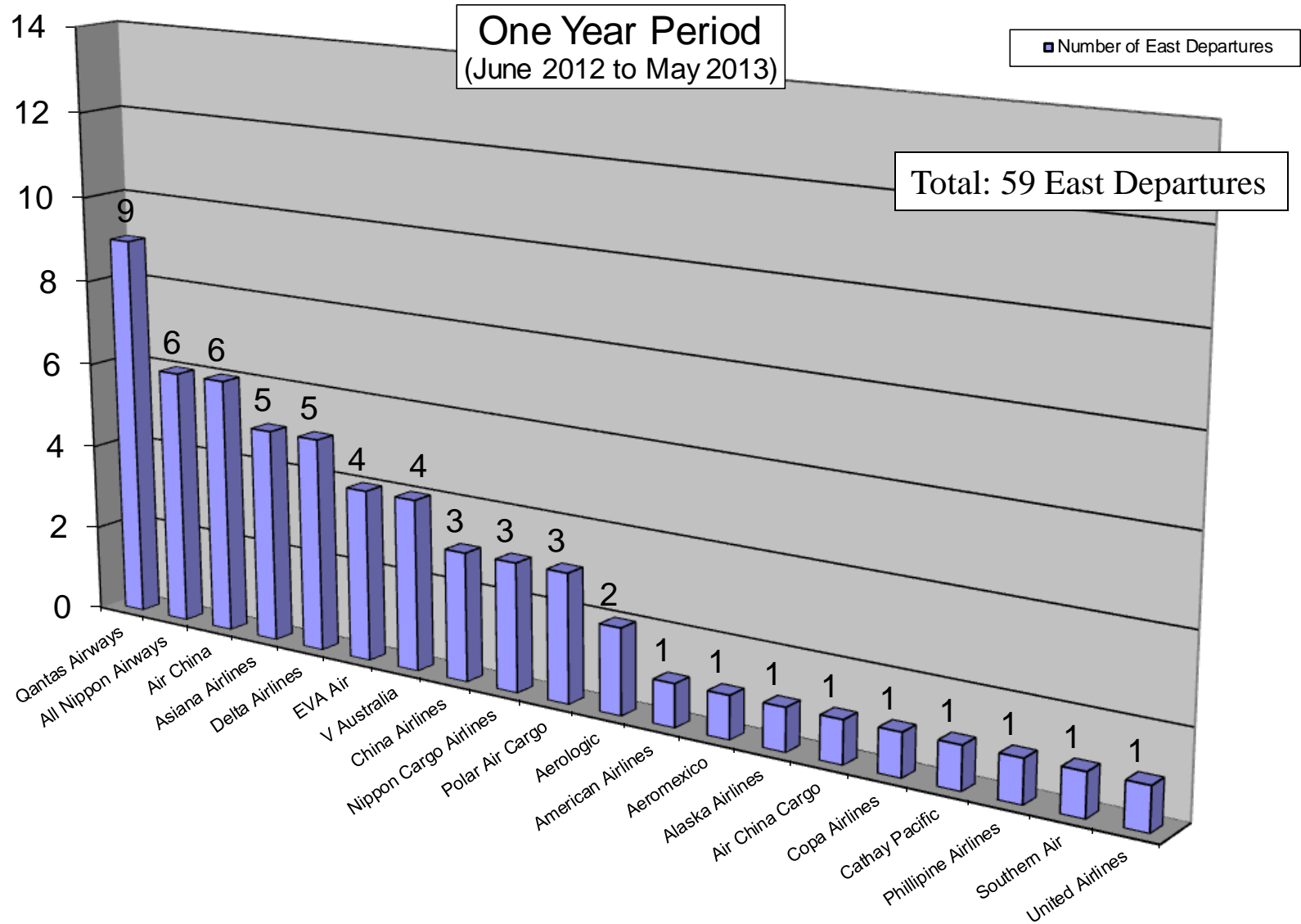


Non-Conforming East Departures Midnight to 6:30 AM

This report shows a summary of aircraft operations that departed to the east while the airport is still conducting westerly departures between midnight and 6:30 a.m. These individual easterly departures usually occur when the pilot of a heavy aircraft (e.g. B747s) determines that the tail wind is too great for the weight of the aircraft and requests to depart east into the wind for aircraft safety.

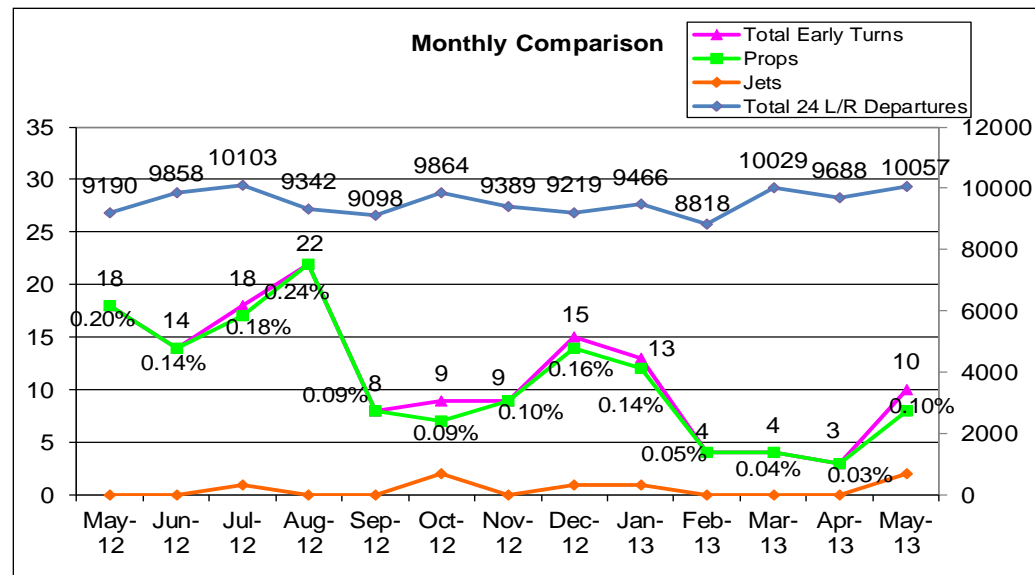
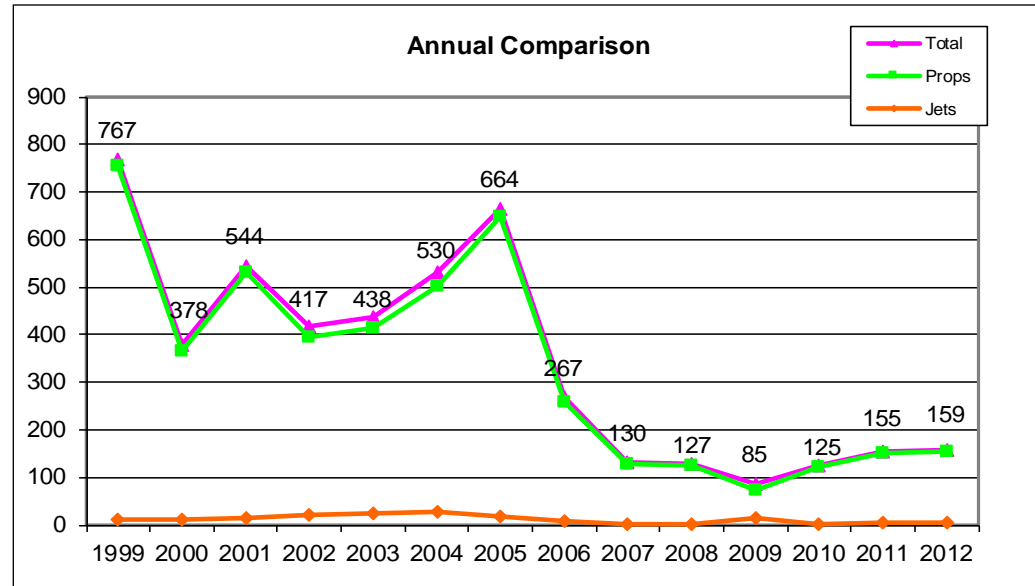
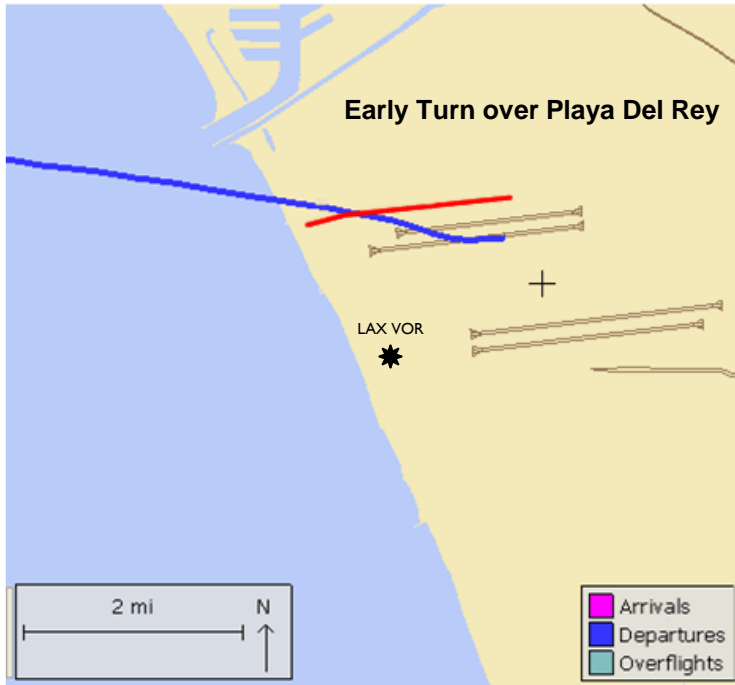


Non-Conforming East Departures by Operators Midnight to 6:30 AM



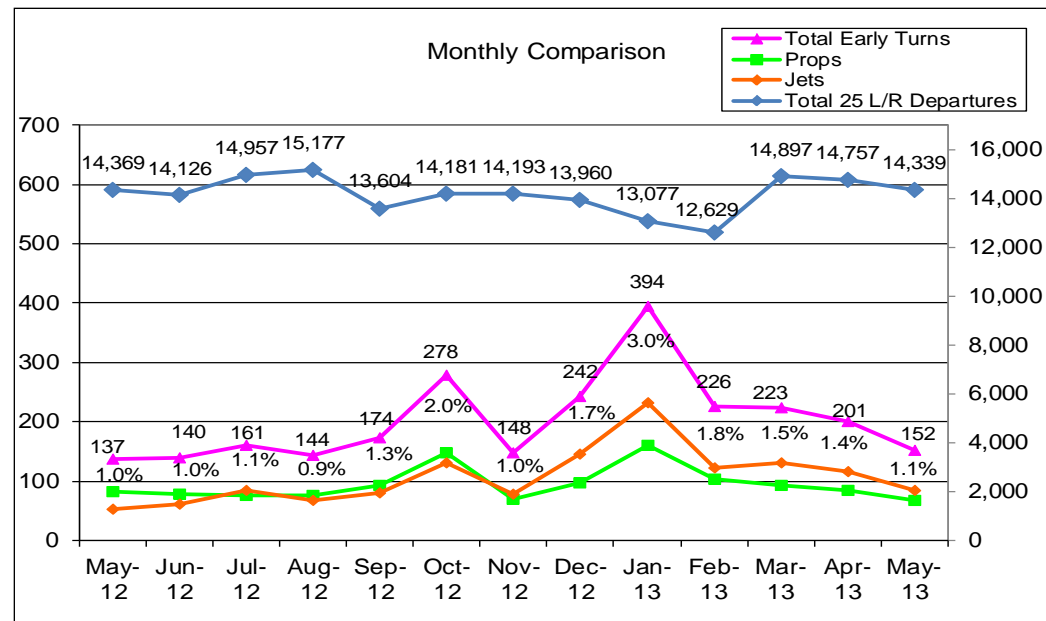
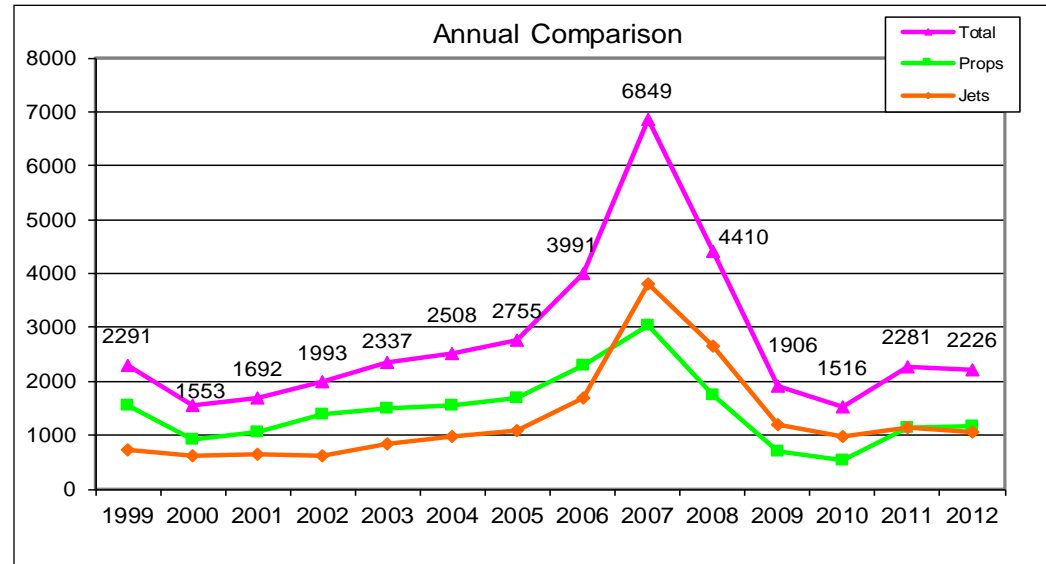
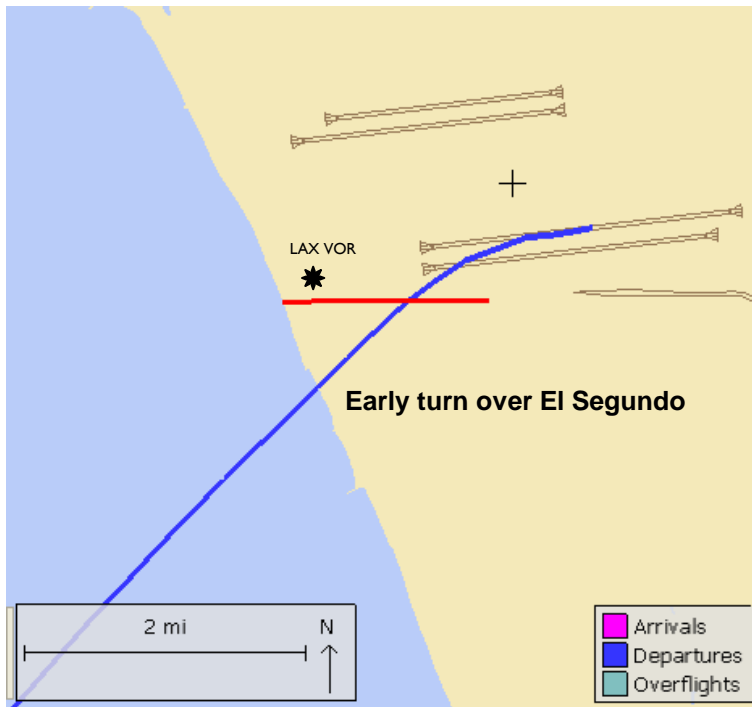
Early Turn to the North

Aircraft departing to the ocean turn early prior to reaching the shoreline

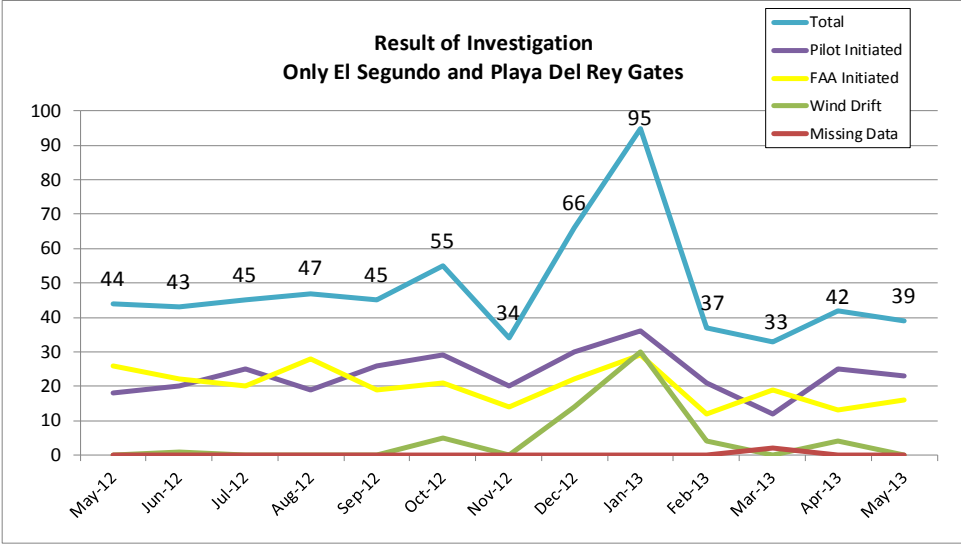
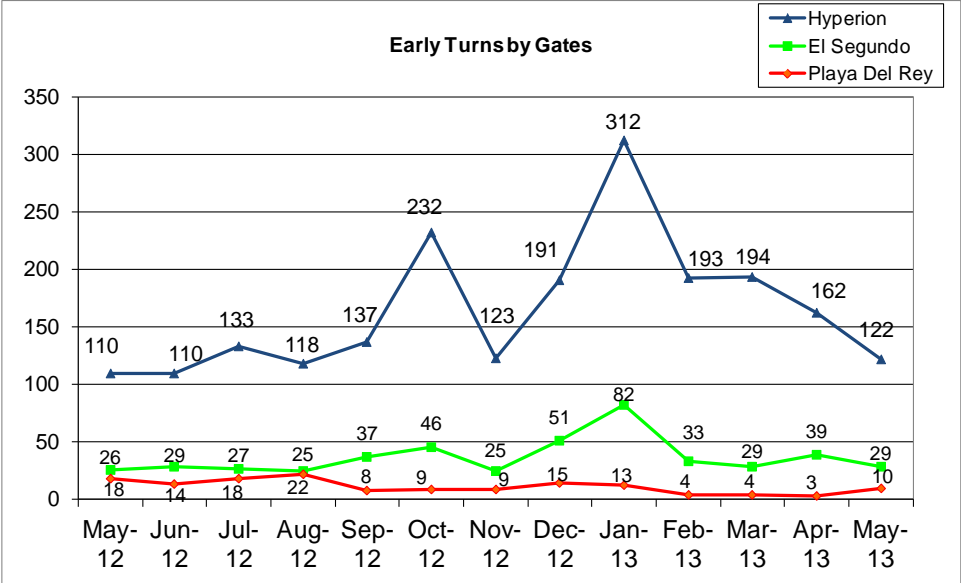


Early Turn to the South

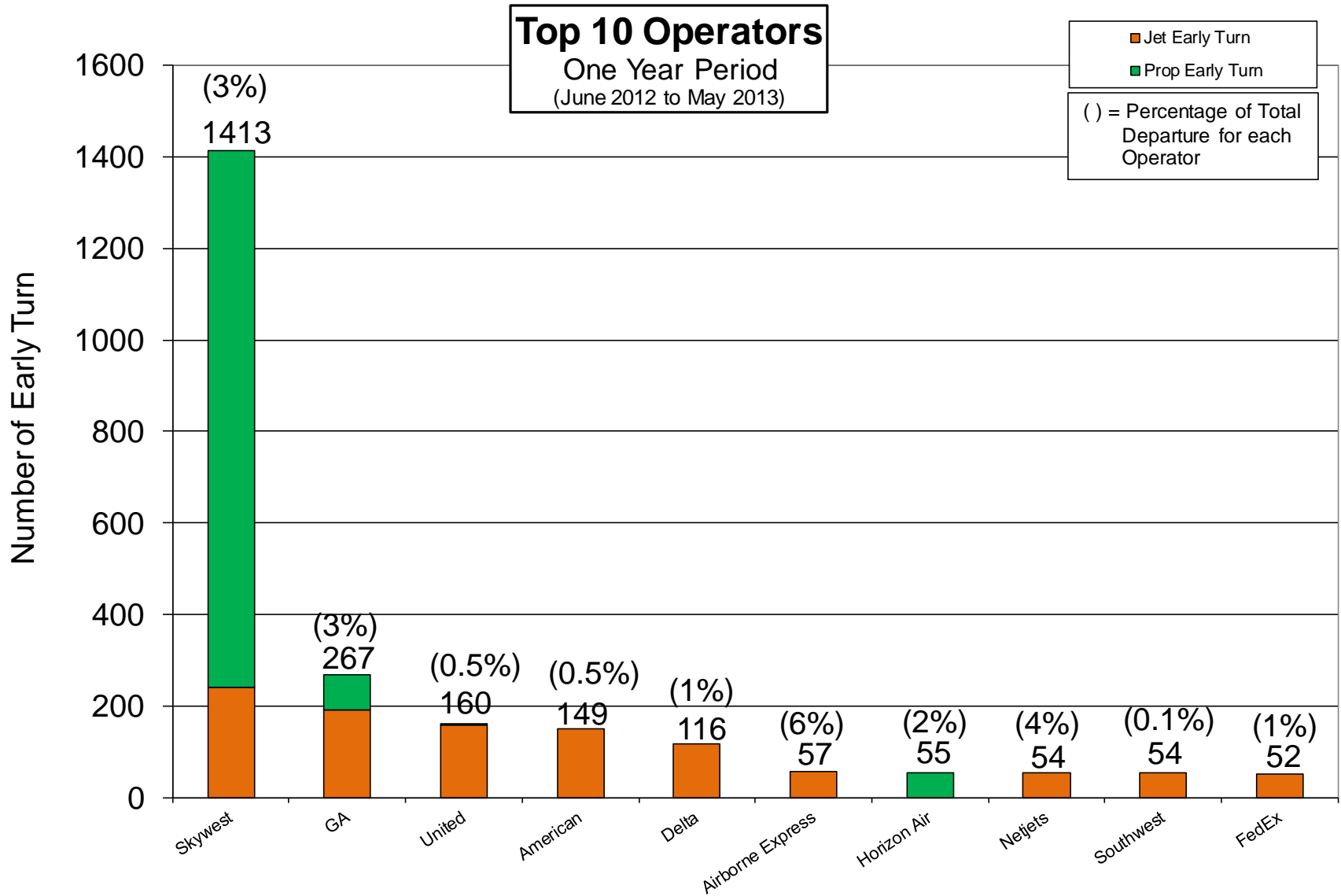
Aircraft departing to the ocean turn early prior to reaching the shoreline



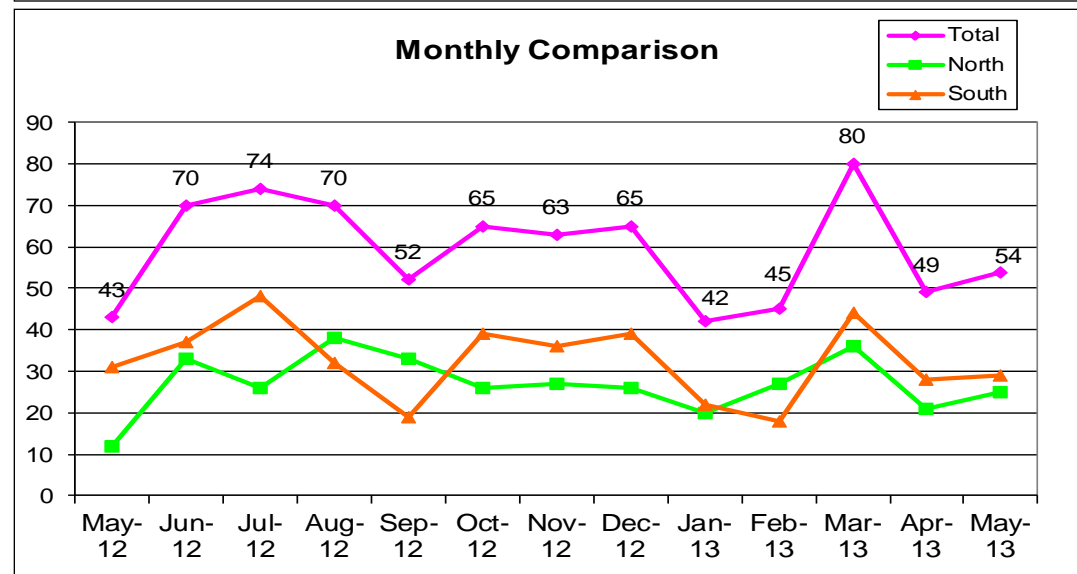
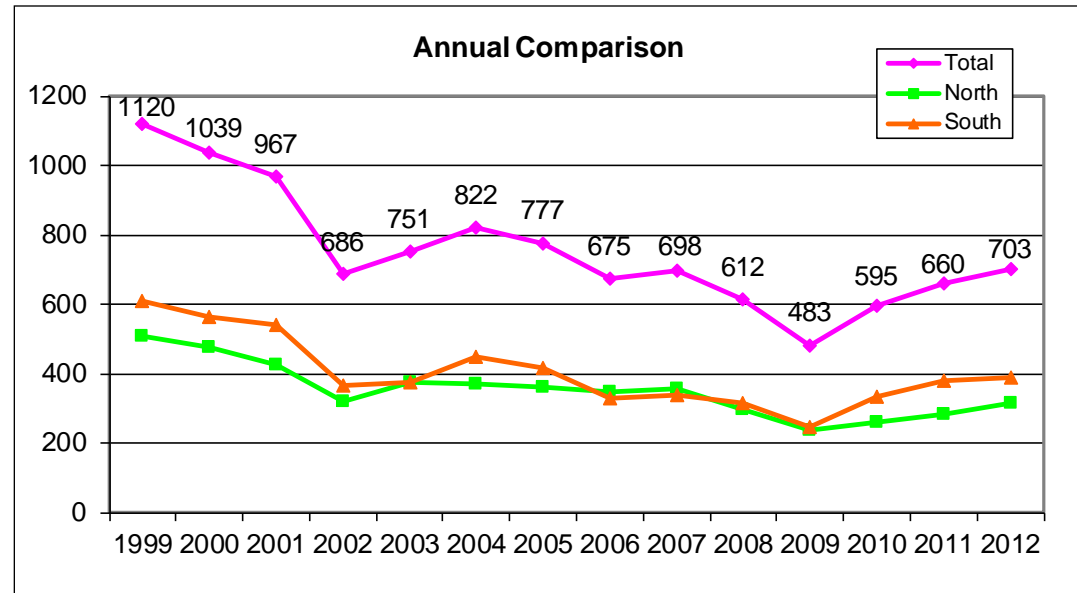
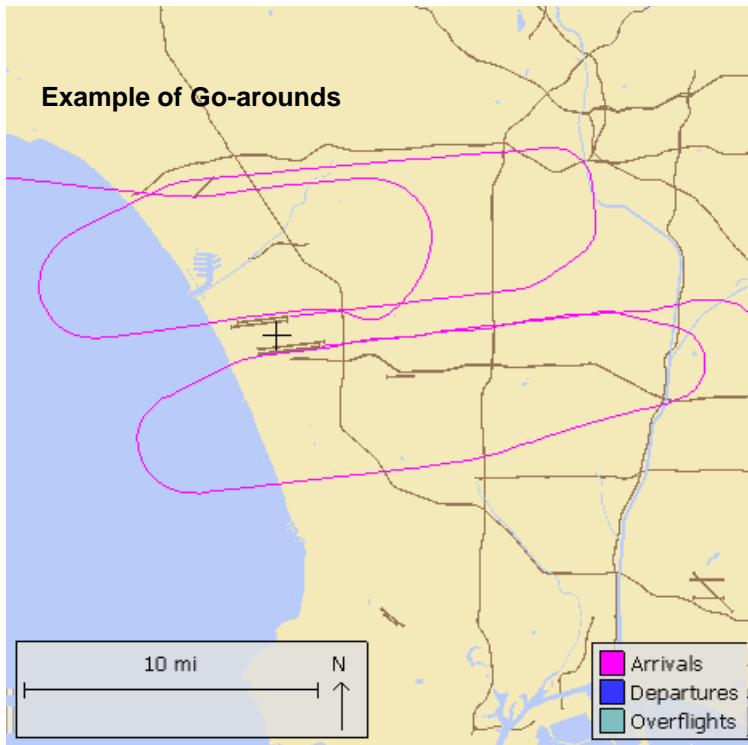
Early Turns Breakdown



Early Turns by Operators



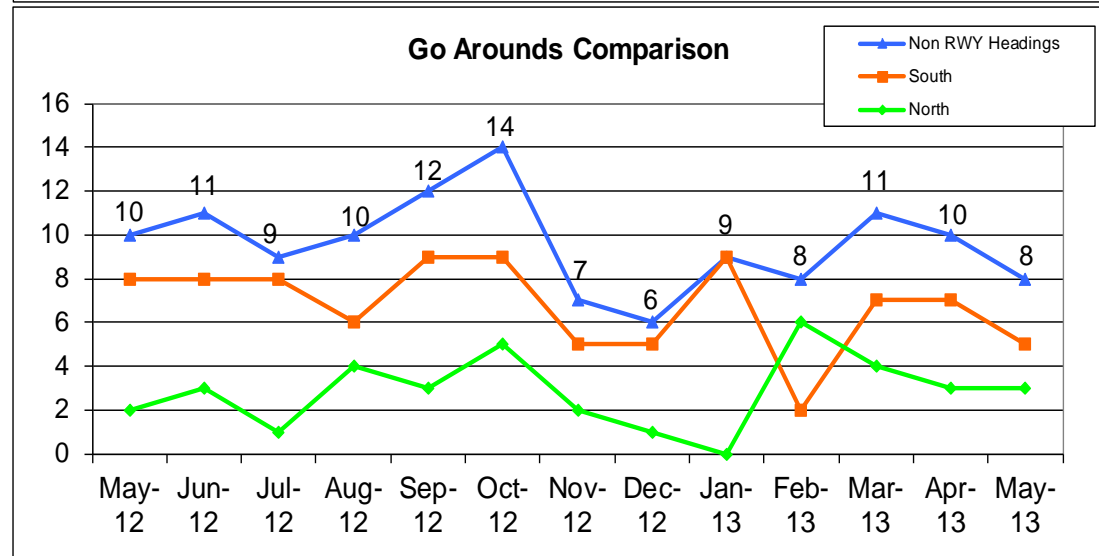
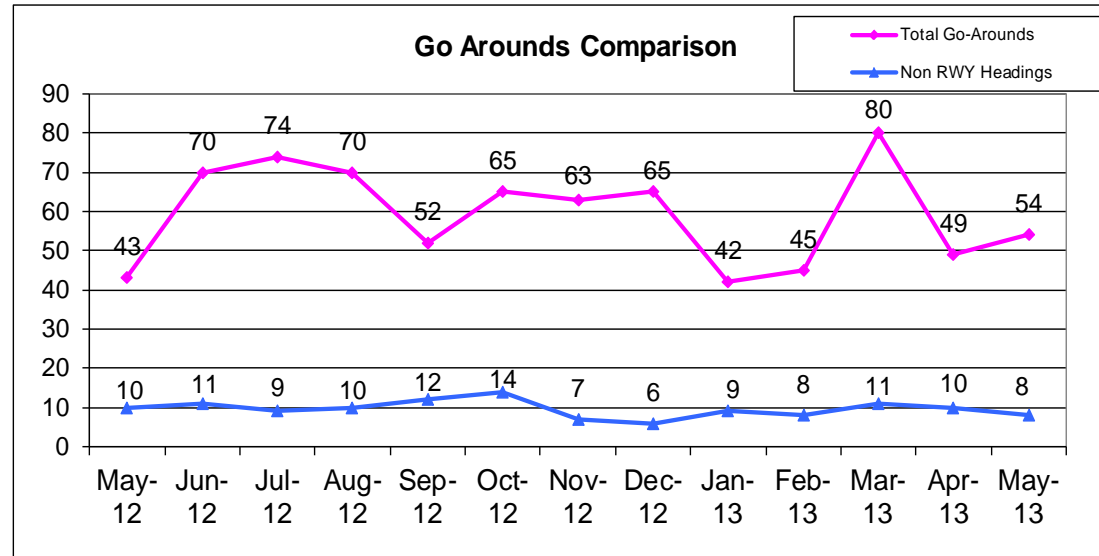
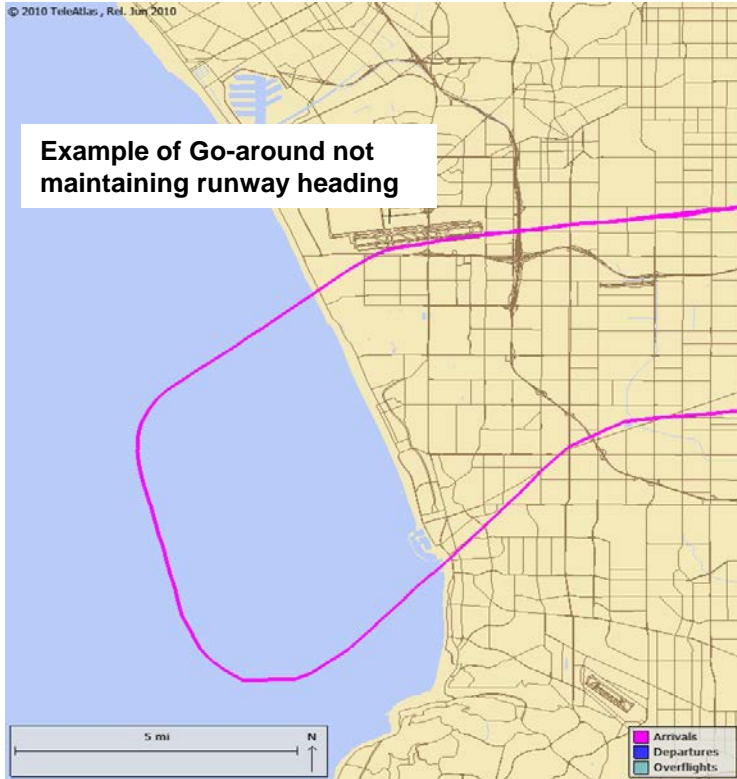
Monitoring pilot or ATC initiated go-arounds or missed approaches



Reasons for Go-Arounds

		Nov 2012	March 2013
Pilot Initiated		44	48
	Weather	17	11
	Too high or too fast	14	20
	Aircraft Equipment (flaps, gears, avionics)	8	15
	Ground Equipment (Nav aids, lighting, etc)	1	
	Other	1	1
	Unknown	3	1
Controller Initiated		14	32
	In-trail Spacing	4	28
	Previous Arrival Traffic on Runway	5	2
	Runway Crossing Traffic	3	
	Departure Traffic on Runway	1	
	Other	1	2
Unknown		5	
Total		63	80

Go-Arounds – Not Maintaining RWY Headings



Go-Arounds – By Operators

