



# Statistical Update on LAX Aircraft Operations

January 8, 2014

LAX/Community Noise Roundtable

# Overview

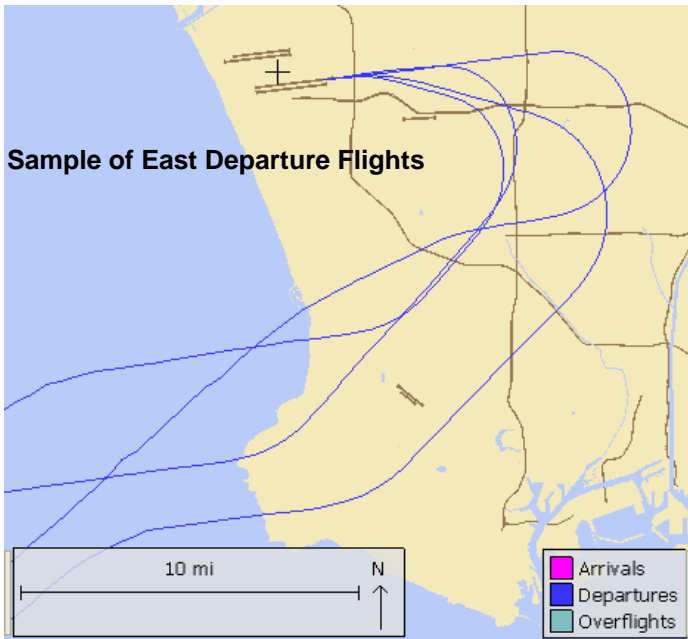
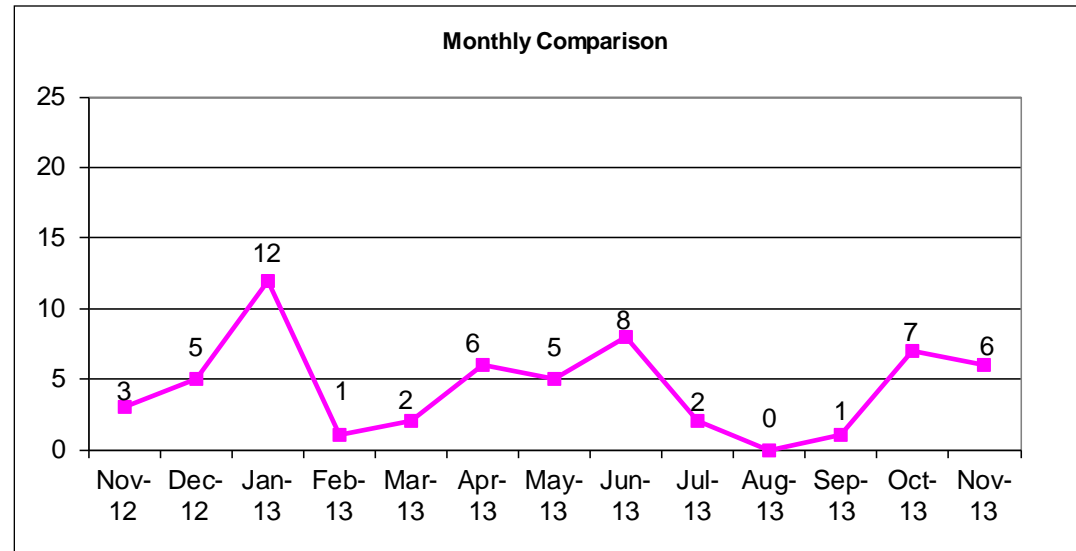
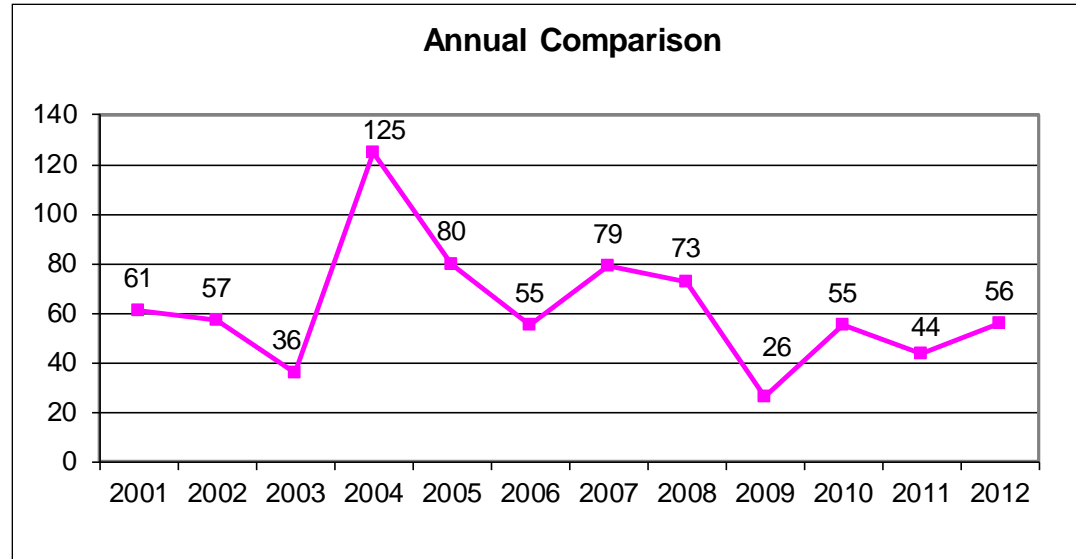
---

Statistical information on the following operations:

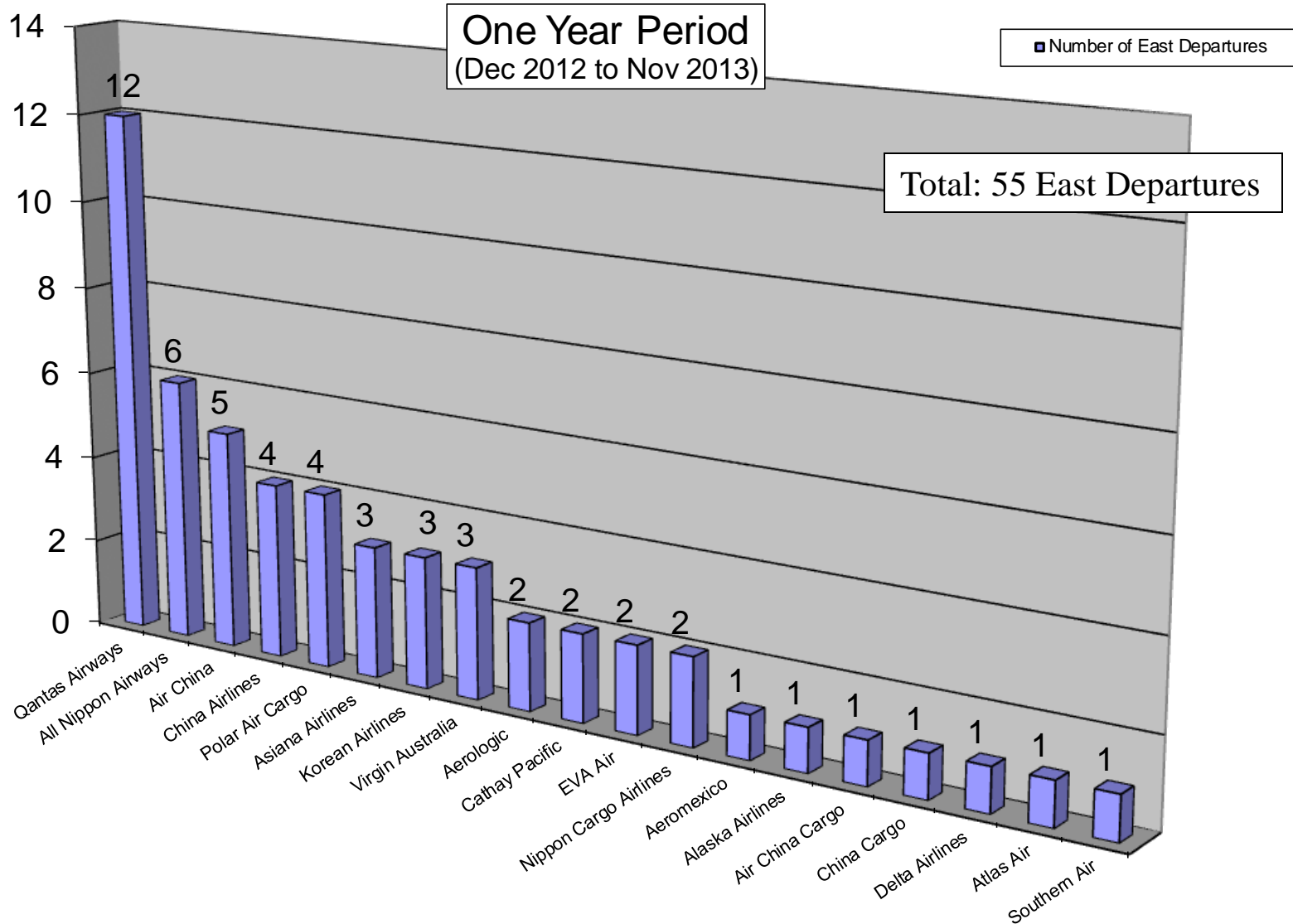
- East Departures
- Early Turns
- Go-arounds

# Non-Conforming East Departures Midnight to 6:30 AM

This report shows a summary of aircraft operations that departed to the east while the airport is still conducting westerly departures between midnight and 6:30 a.m. These individual easterly departures usually occur when the pilot of a heavy aircraft (e.g. B747s) determines that the tail wind is too great for the weight of the aircraft and requests to depart east into the wind for aircraft safety.

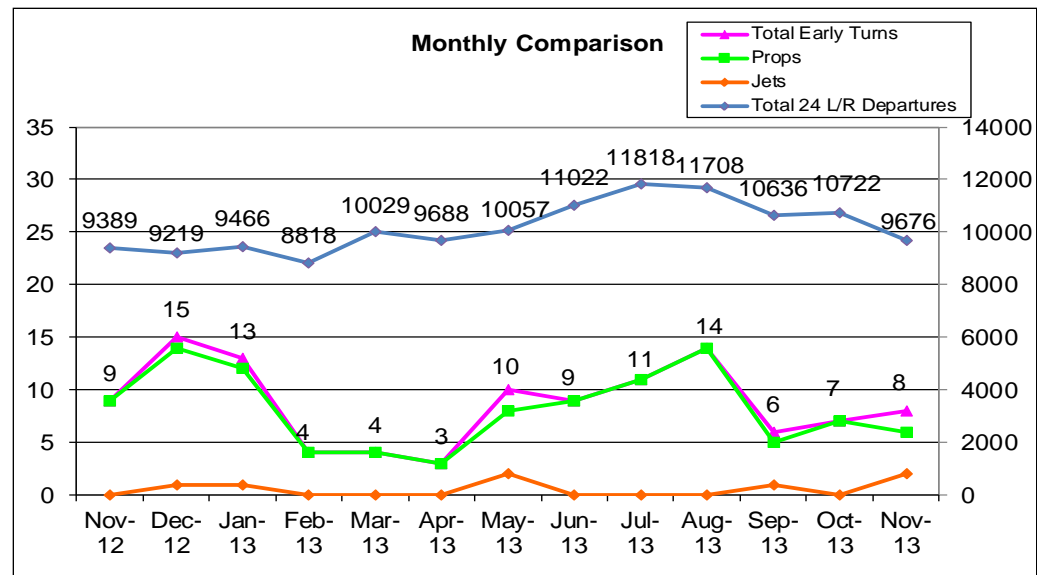
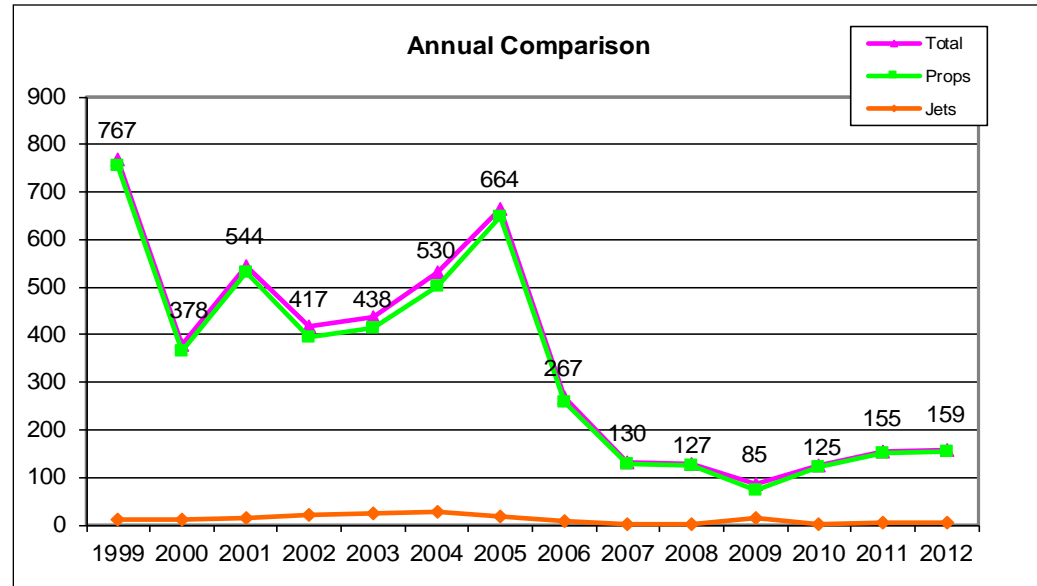
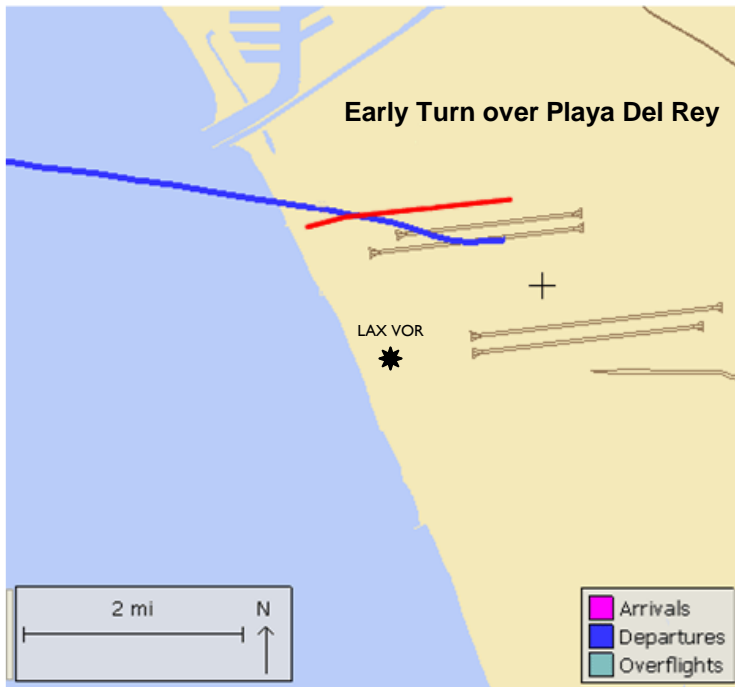


# Non-Conforming East Departures by Operators Midnight to 6:30 AM



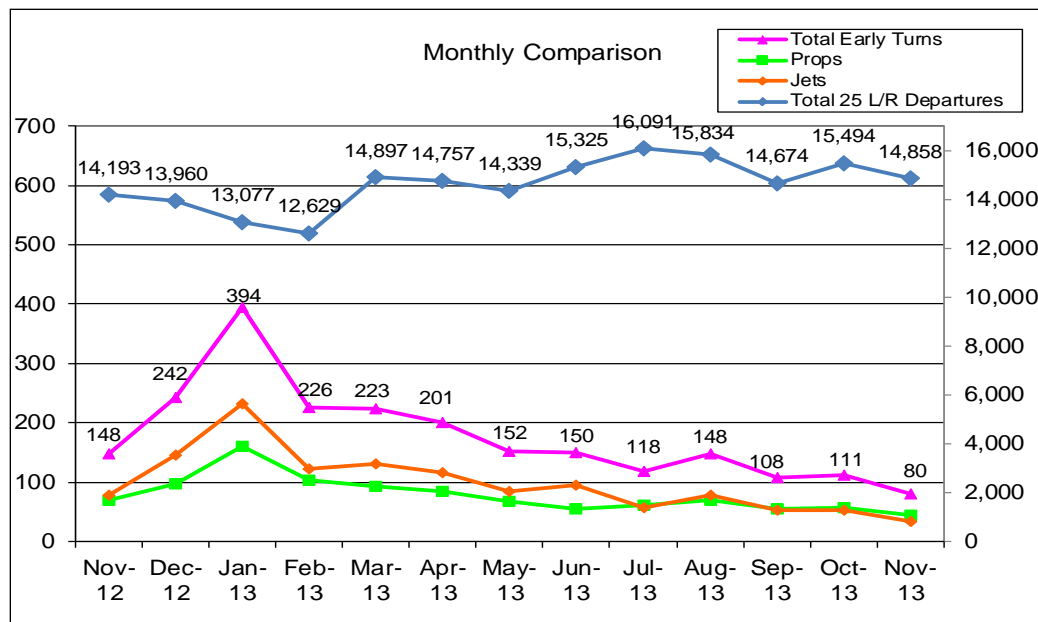
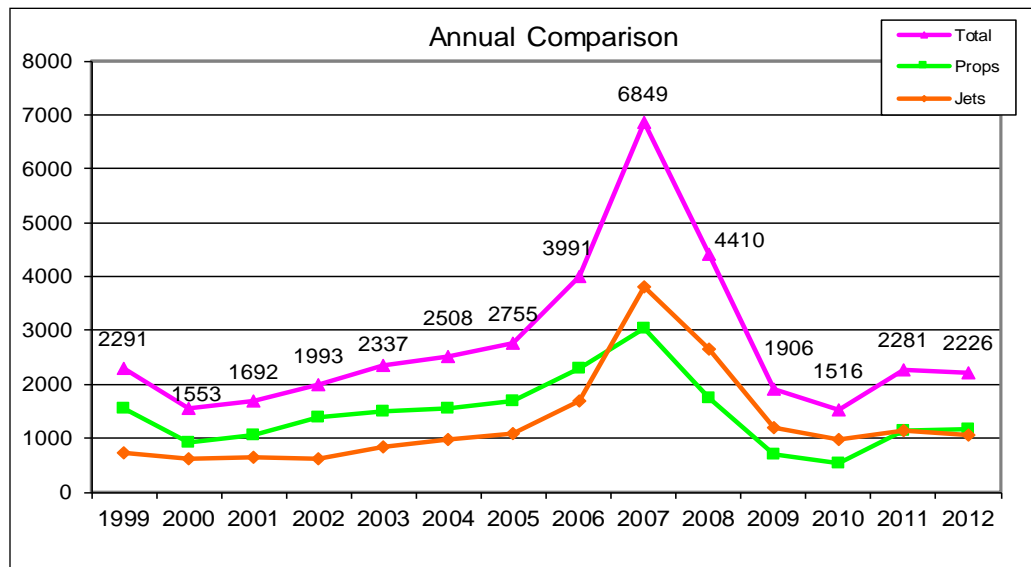
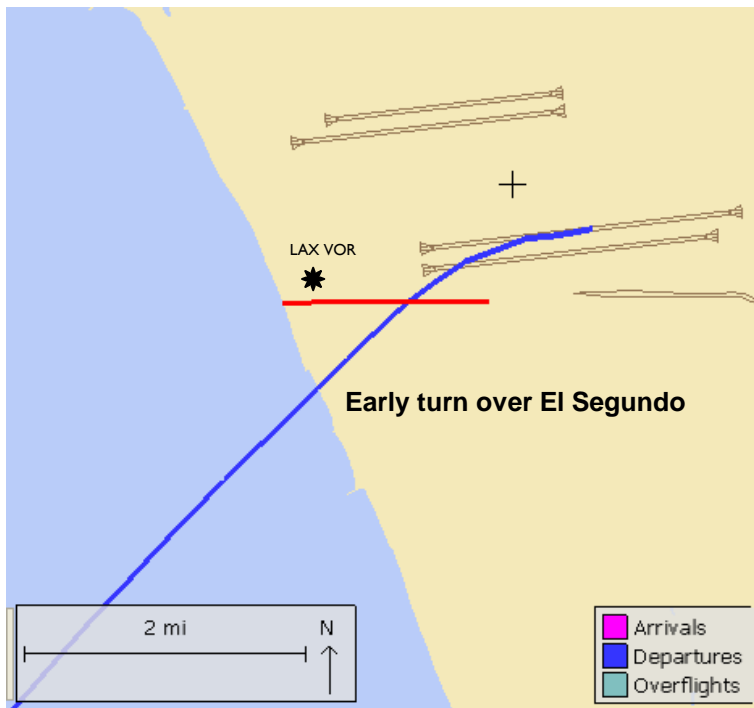
# Early Turn to the North

Aircraft departing to the ocean turn early prior to reaching the shoreline

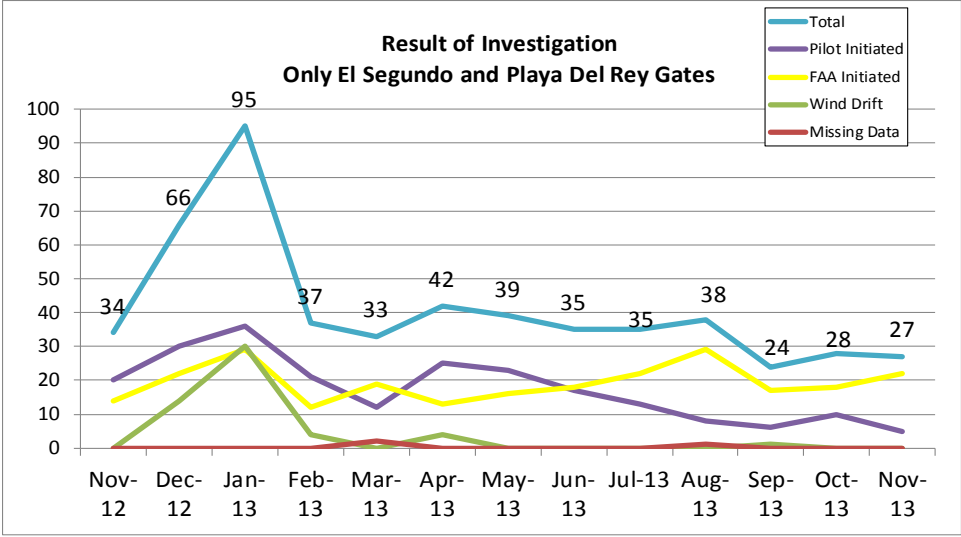
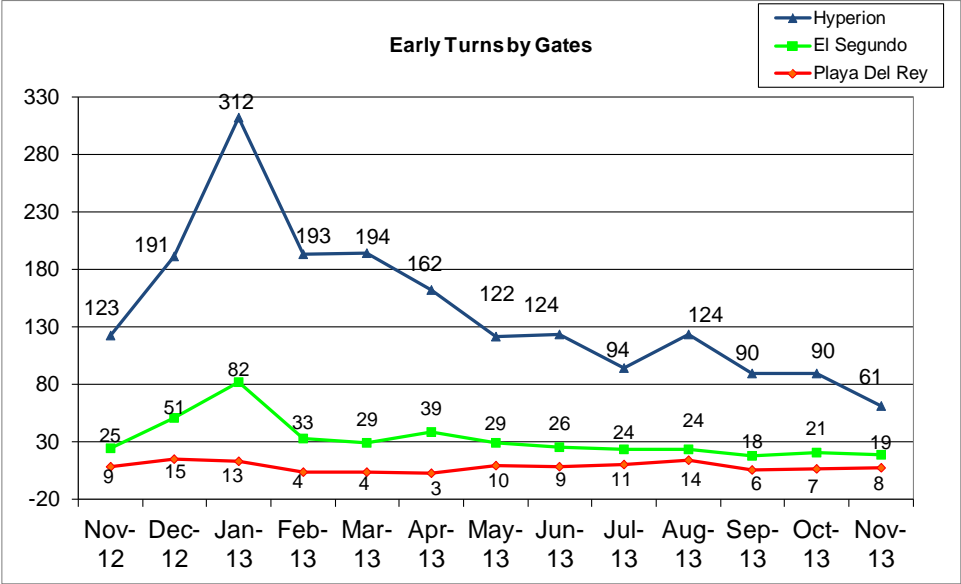
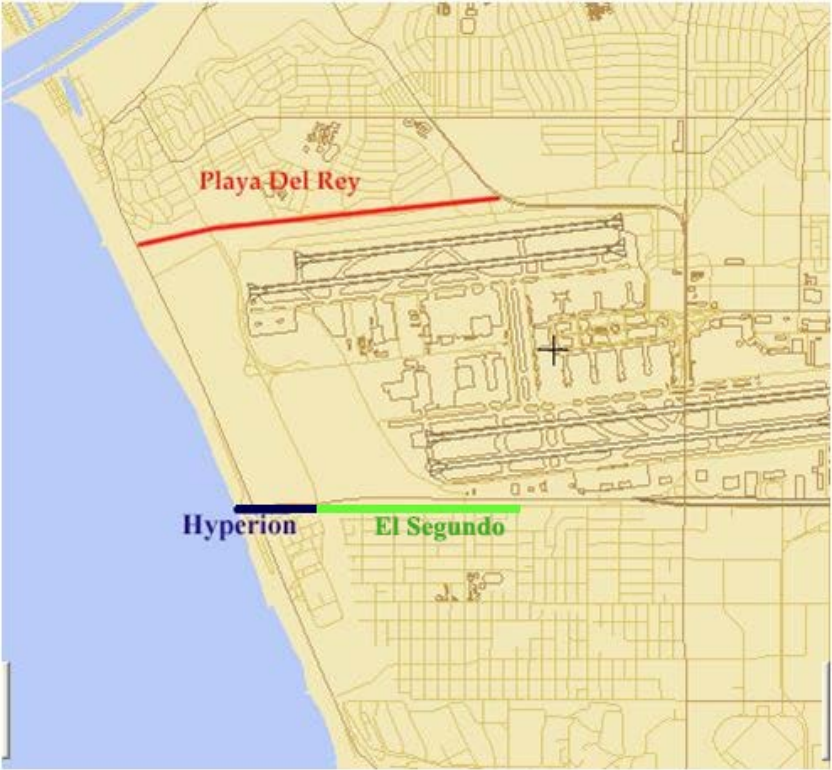


# Early Turn to the South

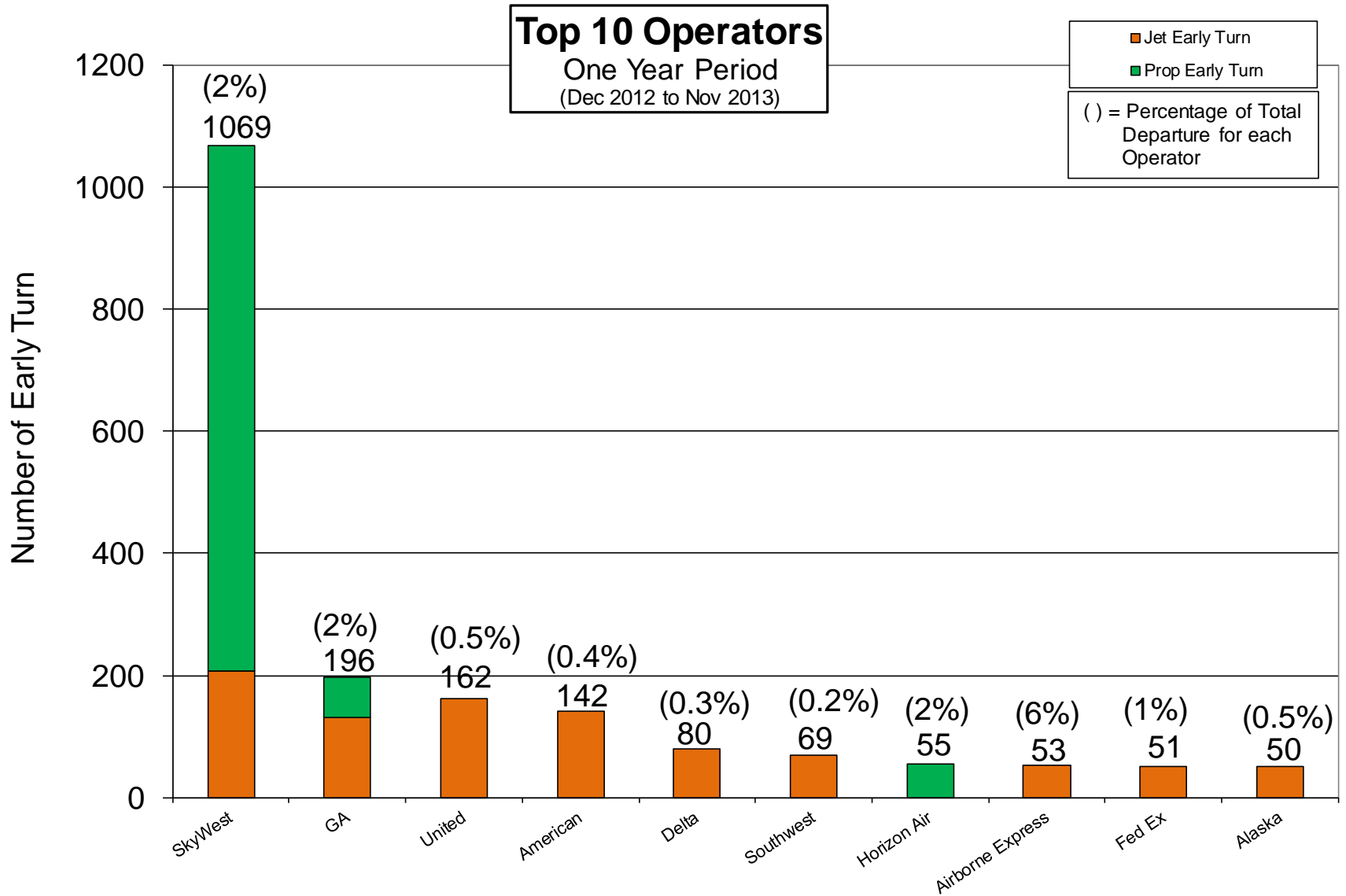
Aircraft departing to the ocean turn early prior to reaching the shoreline



# Early Turns Breakdown

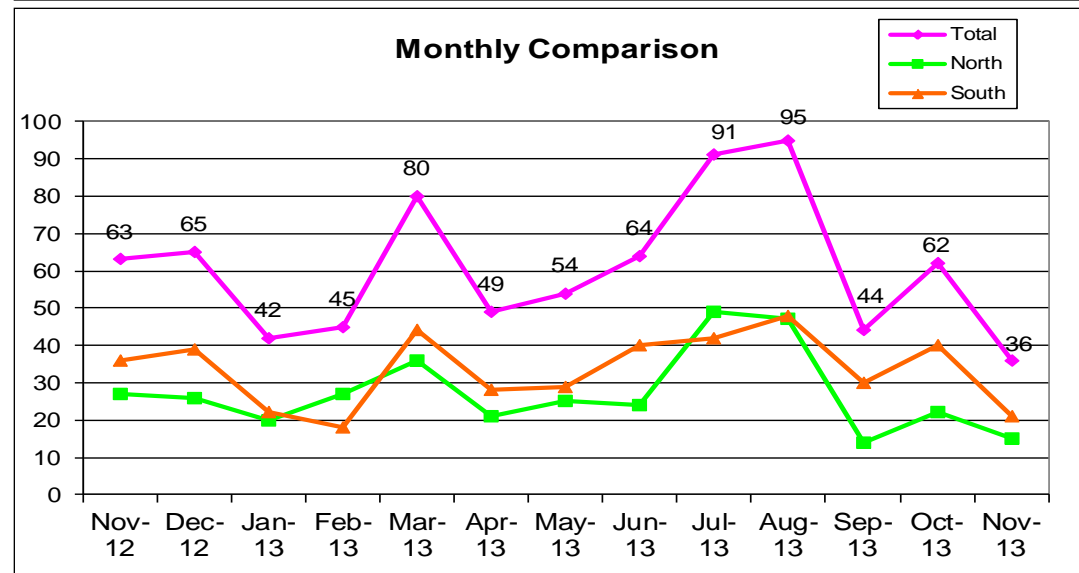
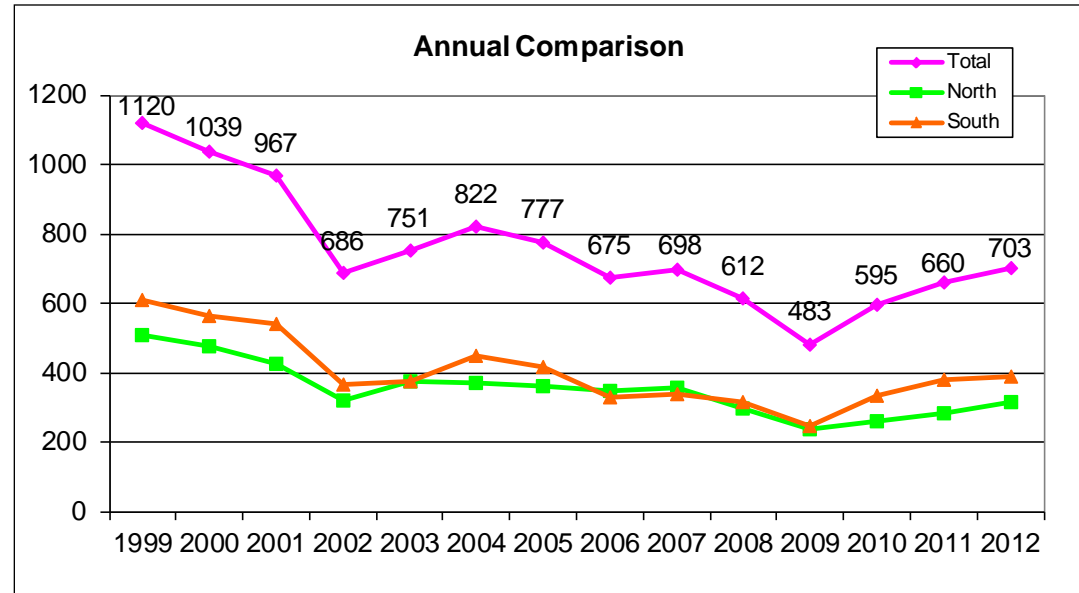
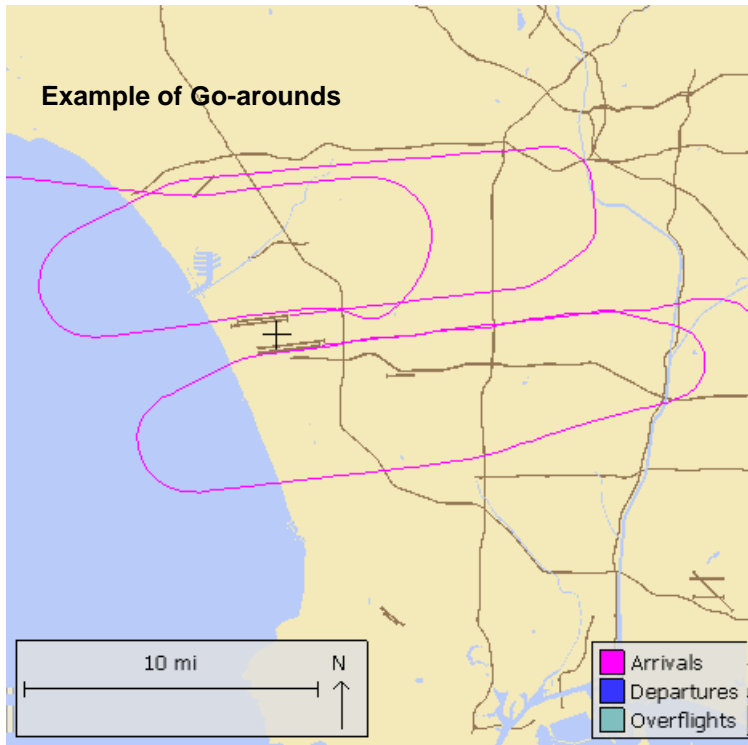


# Early Turns by Operators





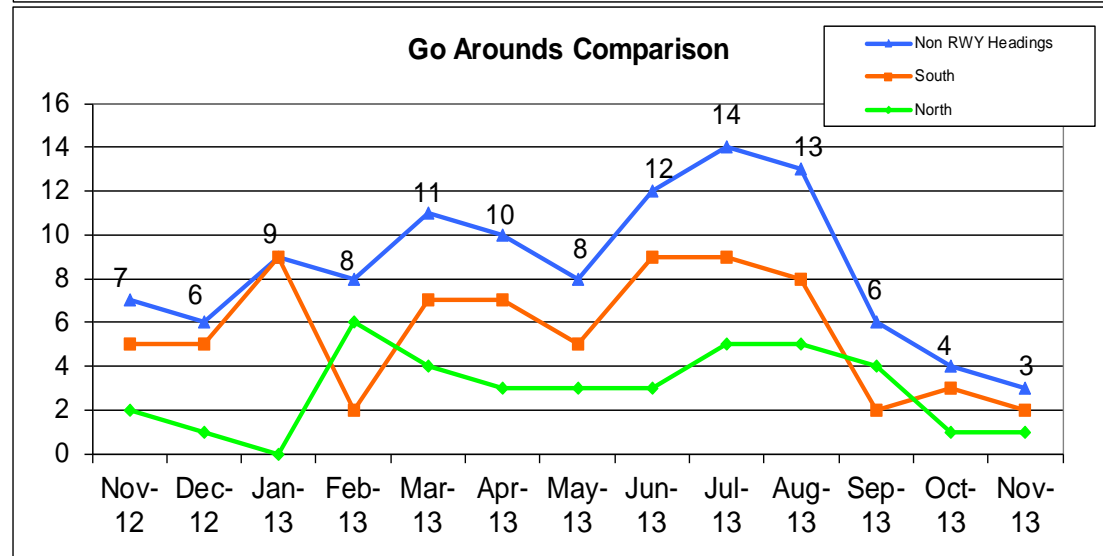
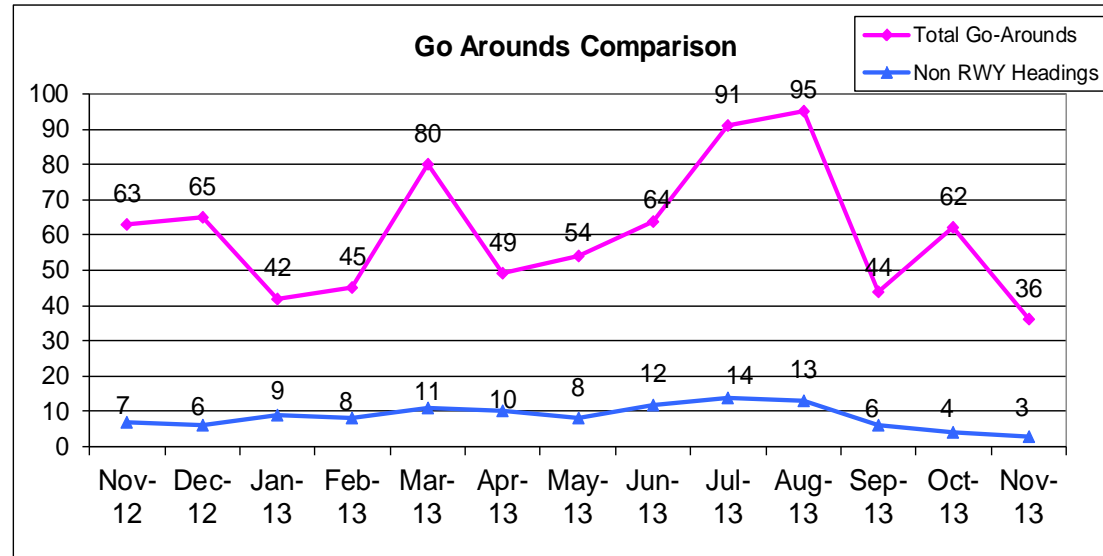
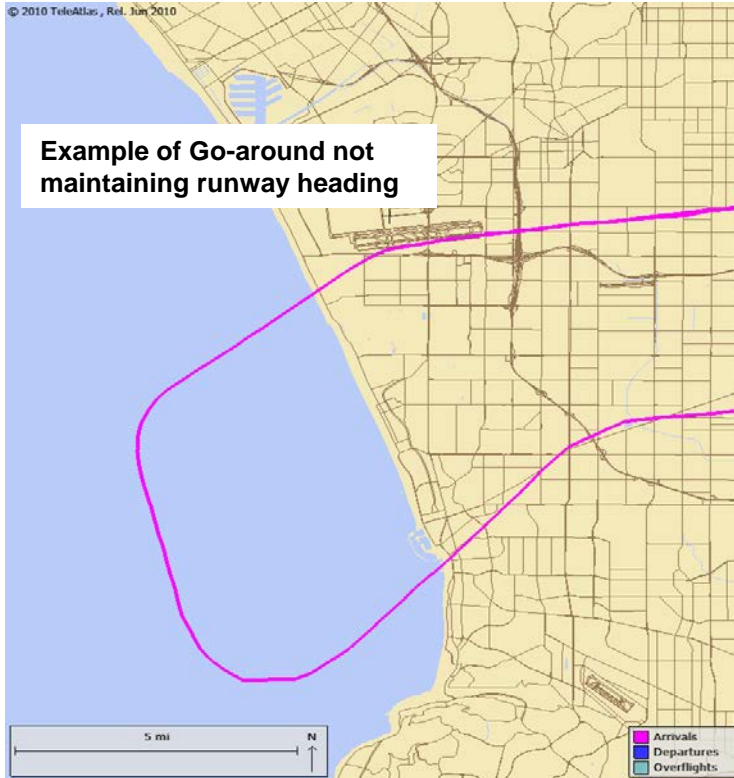
Monitoring pilot or ATC initiated go-arounds or missed approaches



# Reasons for Go-Arounds

		August 2013	October 2013
<b>Pilot Initiated</b>		<b>36</b>	<b>37</b>
	Weather	4	3
	Too high or too fast	23	23
	Aircraft Equipment (flaps, gears, avionics)	3	5
	Ground Equipment (Nav aids, lighting, etc)	2	1
	Other	2	2
	Overtake on Final/ Wake Turbulence	0	2
	TCAS	1	0
	Unknown	1	1
<b>Controller Initiated</b>		<b>51</b>	<b>25</b>
	In-trail Spacing	34	17
	Previous Arrival Traffic on Runway	8	7
	Runway Crossing Traffic	3	0
	Departure Traffic on Runway	2	1
	Other	4	0
<b>Unknown</b>		<b>8</b>	<b>0</b>
<b>Total</b>		<b>95</b>	<b>62</b>

# Go-Arounds – Not Maintaining RWY Headings



# Go-Arounds – By Operators

