



*Los Angeles
World Airports*

LAX Community Noise Roundtable

LAX Part 150 Noise Exposure Map Update Project Briefing #1

March 12, 2014



Overview

- **LAWA has initiated an update of the Federal Aviation Regulations (FAR) Part 150 Noise Exposure Map (NEM) for LAX**
- **Late in 2013 the Alta Environmental Team was selected by LAWA to prepare the LAX Part 150 NEM Update. Alta Environmental is a local, small business enterprise**
- **ESA Airports is serving as a subconsultant to Alta on the NEM Update preparation work including the aircraft noise modeling**
- **The goal is to submit updated NEMs for LAX to the FAA in 2015**
- **FAA requires LAWA to update the LAX NEMs to ensure continued sound insulation funding eligibility**

Specifics

- **LAWA developed NEMs for LAX in 1981 as part of an Airport Noise and Land Use Compatibility (ANCLUC) Study**
- **The FAA typically uses the airport's future year NEM to determine eligibility for federal funding of noise mitigation programs (e.g., sound insulation)**
- **The FAA is currently relying on the LAX Master Plan Alternative D contours for funding current LAX sound insulation programs**
- **The Alt. D contours represent the aircraft noise exposure in terms of the Community Noise Equivalent Level (CNEL) for calendar year 2015 forecast aircraft operations at LAX**

Requirements

- **The LAX NEM Update must be prepared in accordance with the guidance provided in FAR Part 150**
- **FAR Part 150 includes detailed guidance and a checklist of the items that must be included in the FAR Part 150 NEM Update**
- **For example, the LAX NEM Update must include aircraft noise exposure contours for the year of submission and a future year (typically five years in the future)**
 - **The Alta Team will produce LAX NEMs for 2015 and 2020**

Requirements (cont.)

- **The noise contours must be depicted using DNL or CNEL and must be representative of the annual average day**
- **FAR Part 150 deems noise sensitive land uses exposed to noise levels above 65 DNL or CNEL to be incompatible with noise from aircraft operations**
- **Once submitted, FAA reviews the NEM report and either accepts or rejects the NEMs**

This is a Stand Alone Effort

- **This LAX NEM Update is not an airport master plan update, FAR Part 161 Study, nor a FAR Part 150 Noise Compatibility Program Update, and is not related to other ongoing studies**
- **The project team will develop an aircraft operations and fleet mix forecast for FAA’s review and approval**
- **The project team will consider completed and ongoing planning and environmental studies to ensure noise modeling assumptions (e.g., airfield layout, runway use, aircraft fleet mix, flight tracks, etc.) are reflective of existing conditions and anticipated conditions in 2020**
- **The 2020 NEM must be based on “reasonably foreseeable” assumptions regarding future operations at LAX**

The LAX NEM Update Will:

- **Quantify existing and future aircraft noise exposure levels in the vicinity of LAX**
- **Provide the FAA and LAWA with a new set of NEMs to assess future noise mitigation needs**

During The LAX NEM Update LAWA Will Not:

- **Develop or recommend noise abatement or noise mitigation measures designed to minimize aircraft noise impacts**
- **Determine the sound insulation program boundaries**
- **Identify properties that are eligible for sound insulation**

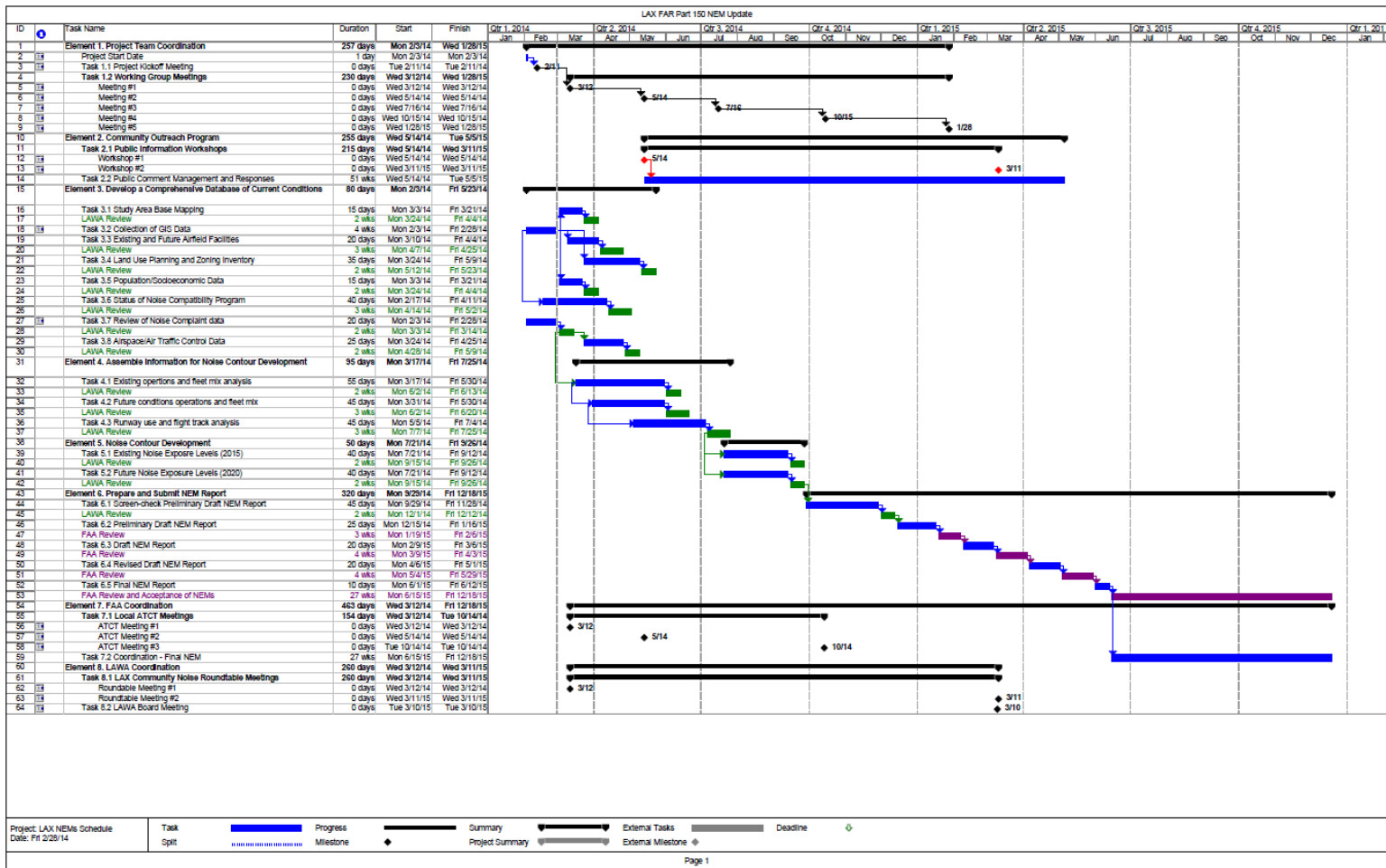
Details

- **The Alta team kicked off the FAR Part 150 NEM Update with a project team meeting at LAWA's offices on February 18, 2014**
- **Reviewed the scope of work and project schedule**
- **Identified key contacts at LAWA for key data needs**
- **Agreed to brief the LAX Community Noise Roundtable tonight**
- **Kathryn Pantoja is LAWA's Project Manager**
- **Steve Alverson is the Alta Environmental Team's Project Manager**

Study Elements

- **Project Team Coordination**
- **Community Outreach Program**
- **Develop a Comprehensive Database of Current Conditions**
- **Assemble Information Required For Noise Contour Development**
- **Noise Contour Development**
- **Prepare and Submit NEM Report**
- **FAA Coordination**
- **LAWA Coordination**
 - **Includes two Roundtable briefings**

Study Schedule



Key Dates in 2014

- **1/31/14 – Notice to Proceed**
- **3/12/14 – Roundtable Briefing**
- **2/3/14 – 5/23/14 – Develop Database of Current Conditions**
- **3/17/14 – 7/25/14 – Assemble Information for Noise Contour Development**
- **5/13/14, 5/15/14, and 5/16/14 – Community Workshops
(*Tentative*)**
- **7/21/14 – 9/26/14 – Noise Contour Development**

Key Dates in 2015

- **9/29/14 – 12/18/15 – Prepare and Submit NEM Update**
- **3/10/15 – LAWA Board Meeting (*Tentative*)**
- **3/11/15 – Roundtable Briefing (*Tentative*)**
- **3/10/15, 3/12/15, and 3/13/15 – Community Workshops (*Tentative*)**
- **6/15/15 - Submit LAX NEM Update to FAA**
- **12/18/15 – FAA Acceptance of the LAX NEM Update**

Questions?