



# **Statistical Update on Aircraft Operations**

**November 8, 2017**

**LAX/Community Noise Roundtable**

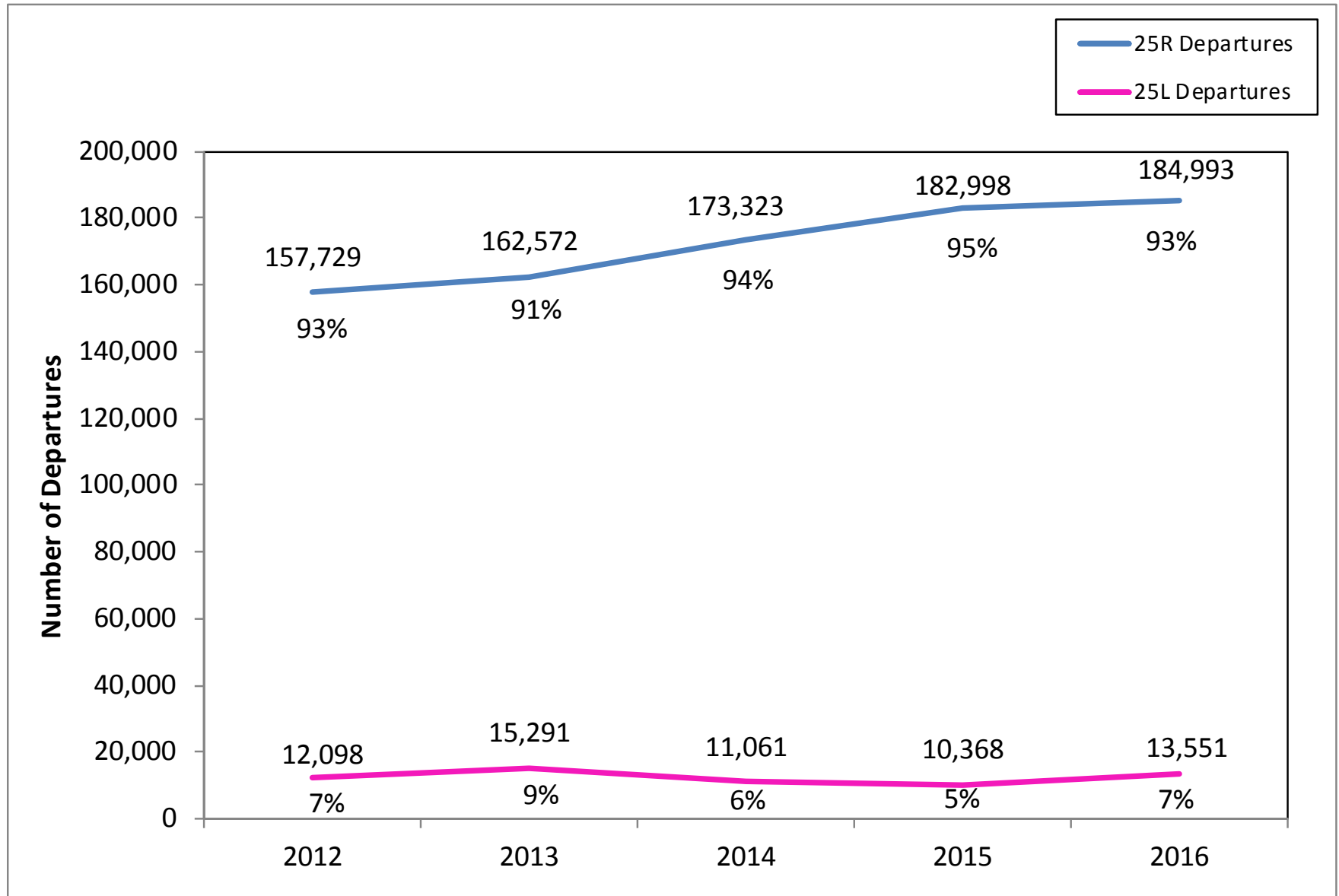
# Overview

---

Statistical information on the following operations:

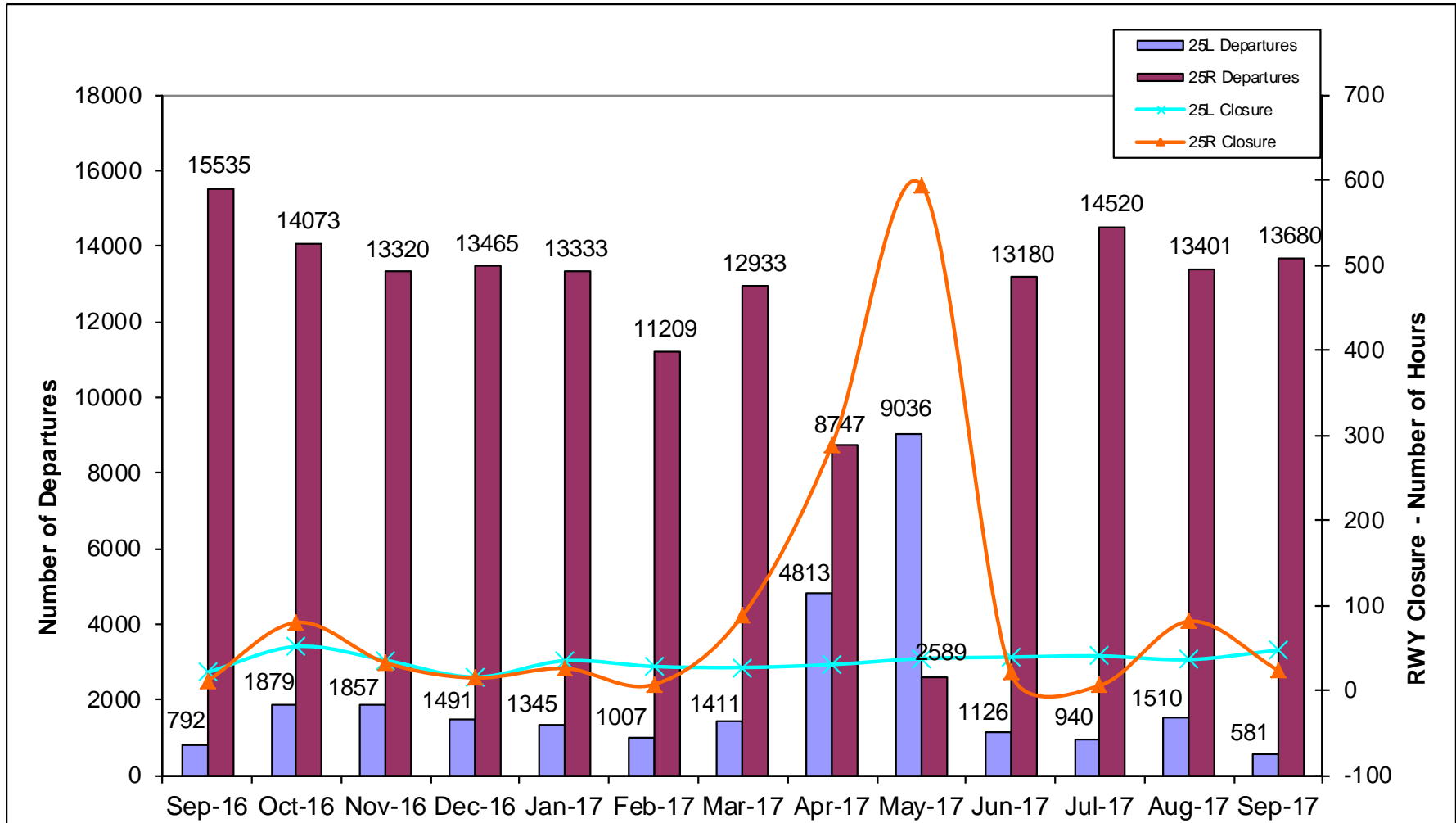
- 25L Departures
- Palos Verdes Overflights

# Departures – Runways 25L and 25R Annual Comparison



# Departures – Runways 25L and 25R

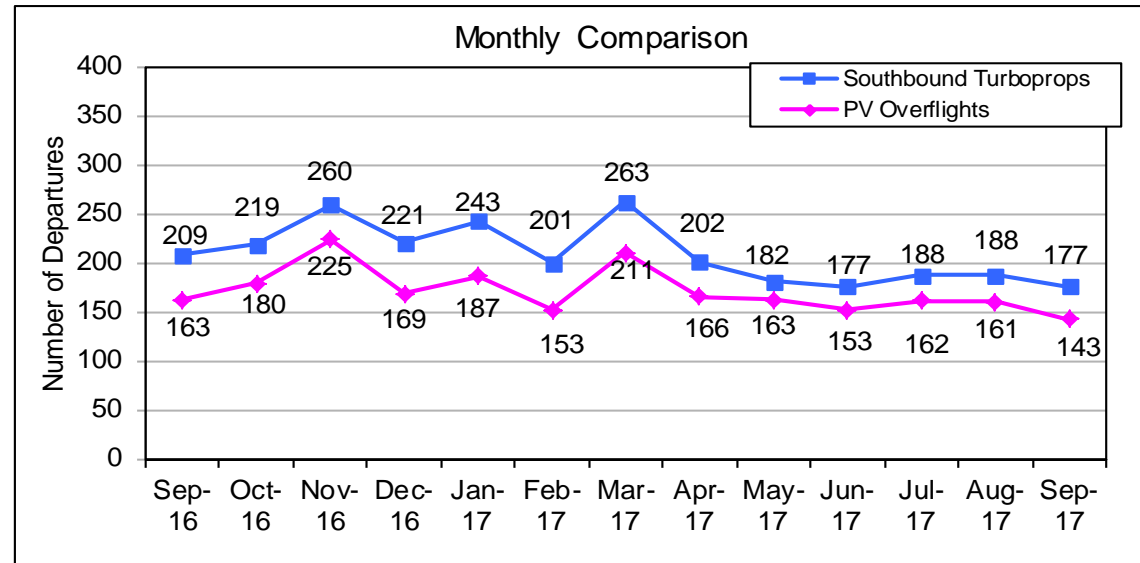
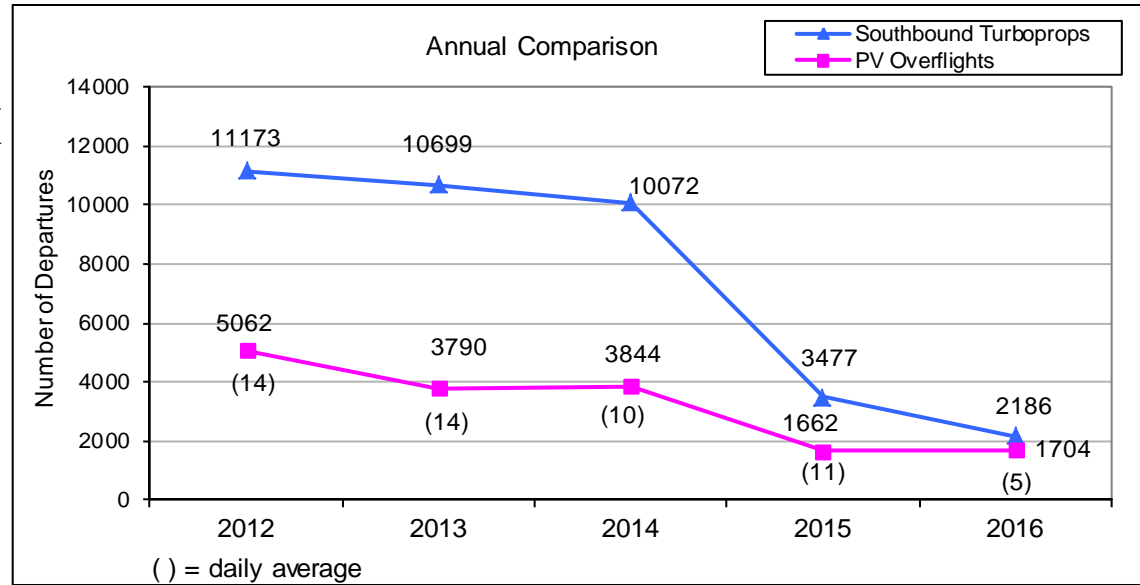
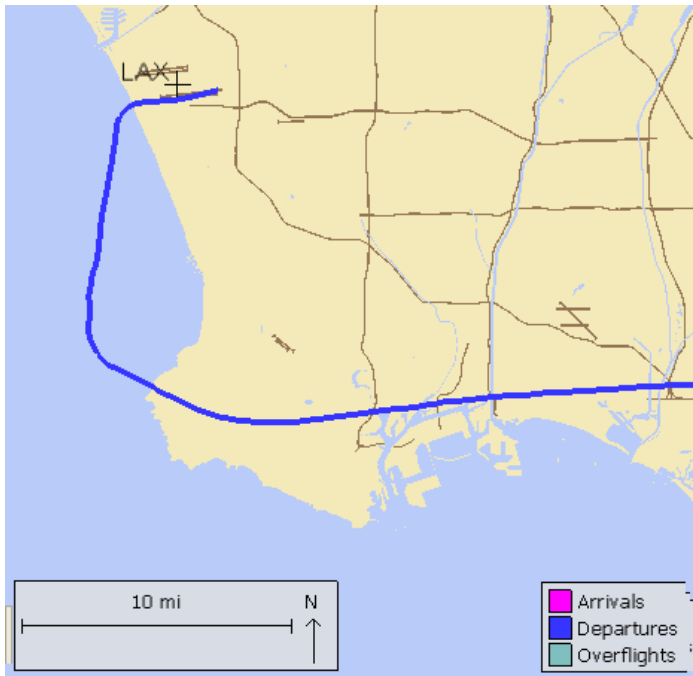
## 13-month period



**Note:** The closure of RWY 25R for RSA construction has contributed to the increase in 25L departures in April and May 2017.

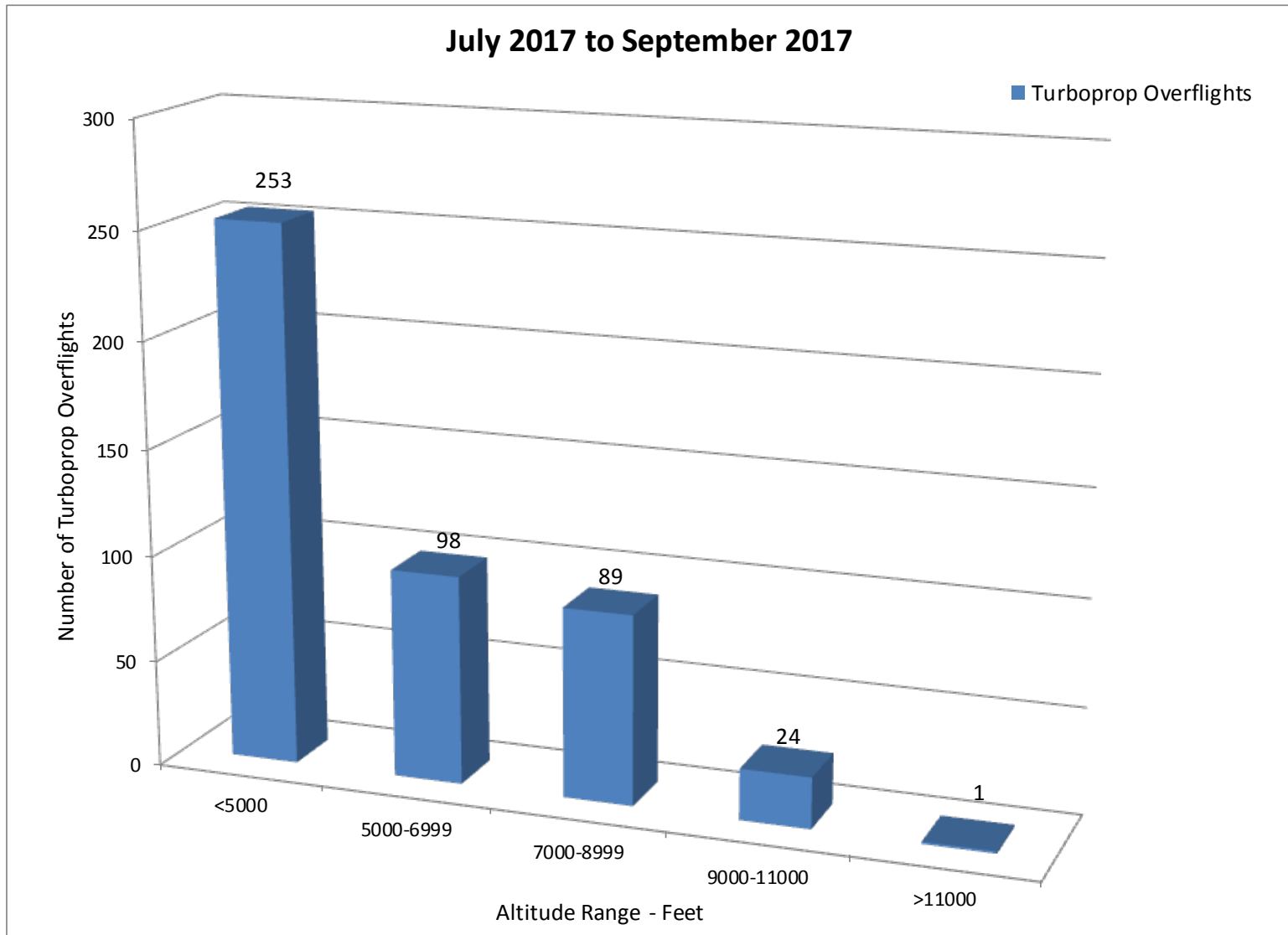
# Palos Verdes Peninsula – Turboprop Overflights

Monitoring southbound turboprops departing from LAX that overfly Peninsula



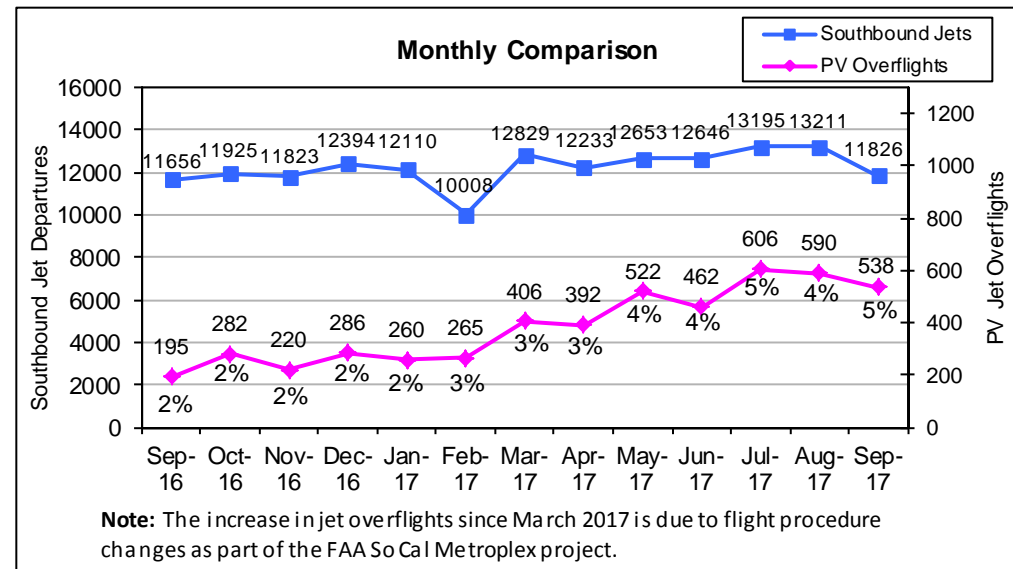
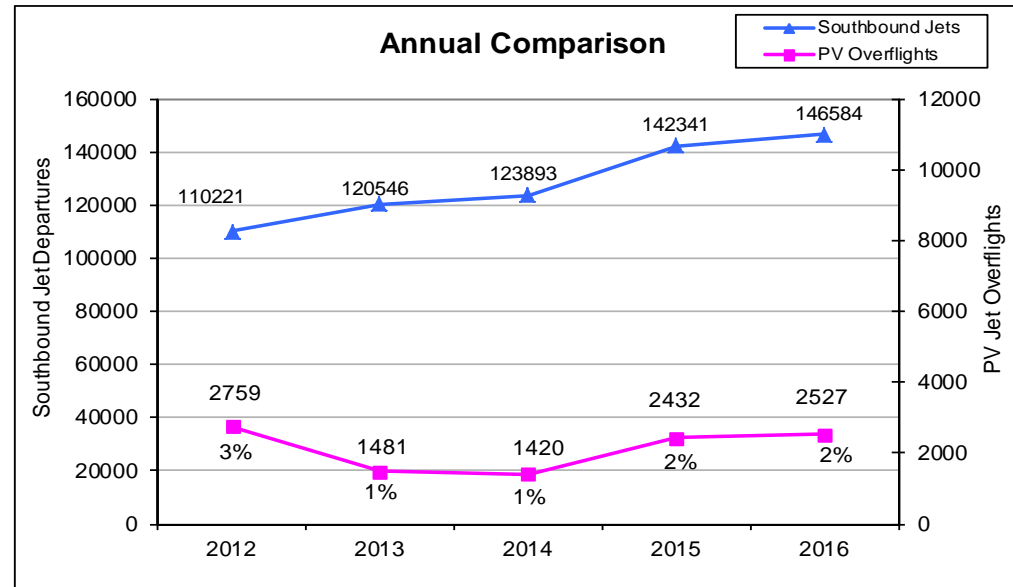
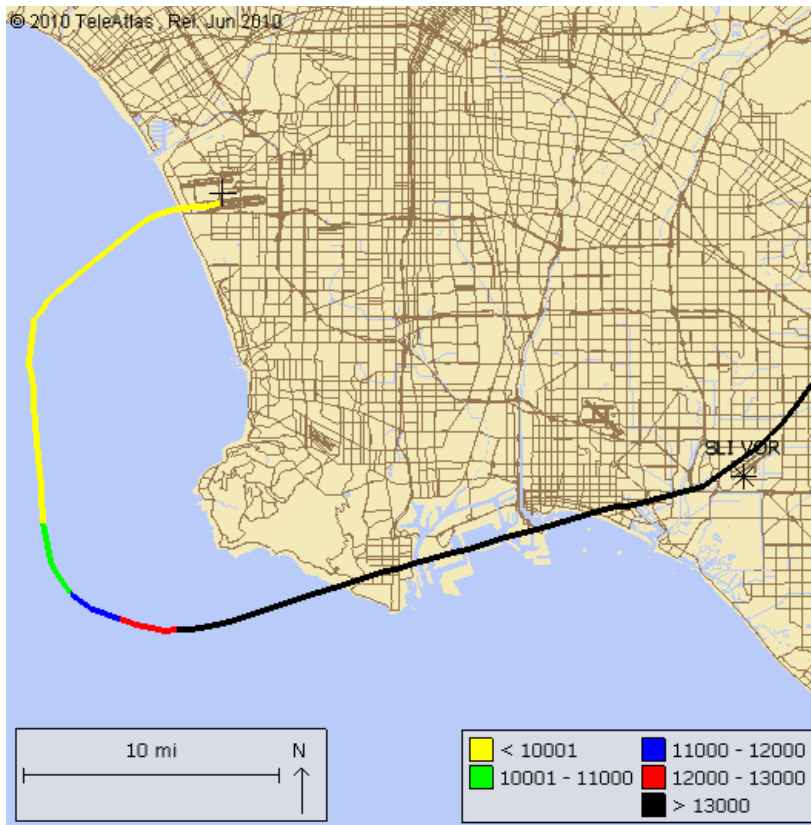
**Note:** Prior to SkyWest’s fleet mix change (turboprop to jet) in early 2015, monthly southbound turboprops were ~800 and PV overflights were ~300.

# Turboprop Altitudes over PV



# Palos Verdes Peninsula – Jet Overflights

Monitoring southbound jets departing from LAX that overfly Peninsula



# Jet Altitudes over PV Peninsula

