

TAXILANE C9 CLOSURE

Taxilane C9 between Terminals Four and Five will be closed for pavement replacement from **0001L on February 11th, 2019, to 2359L on February 13th, 2019**. The purpose of this work is to repair rutting and depressions along the centerline and main gear track. This work will be completed by LAWA Paving Crew.

This closure will impact the airlines that use Terminal 4 and Terminal 5.

Terminal 4 Gate Closures and Modifications:

- Closed - Gates 40, 42A, 42B, 46A, 46B, and 46C
- Impacted - Gate 48A will remain open with a modified lead-in line

Terminal 5 Gate Closures and Modifications:

- Closed - Gates 51A, 51B, 53A, 53B, and 55A will be closed
- Impacted - Gate 57 will remain open with a modified lead-in line

The impacted aircraft that use Terminals 4 and 5 will be accommodated at the West Remote Gates and will be supported by LAWA Bus Operations.

Thank you for your support.

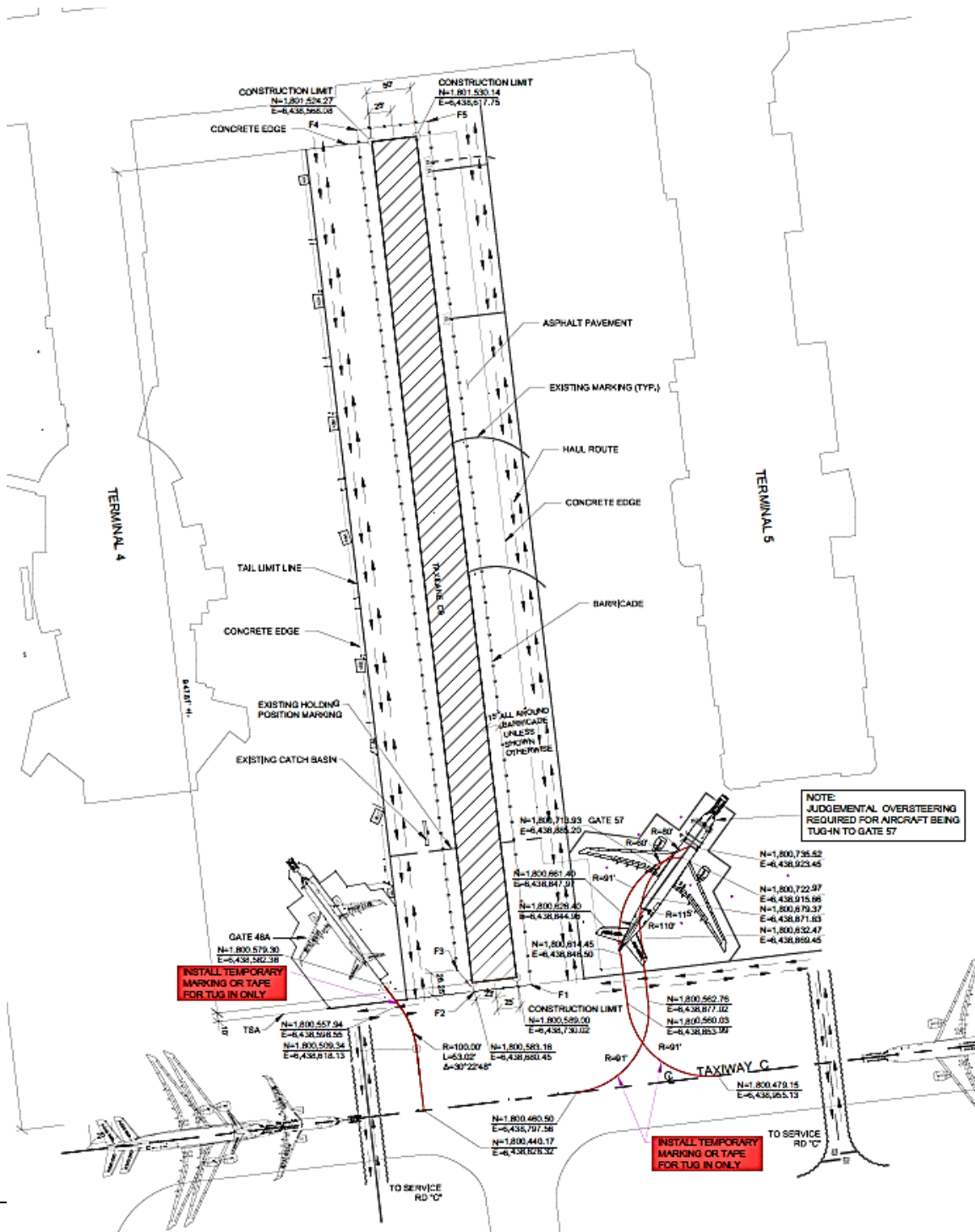
For questions or comments regarding this advisory please contact Jeff Mort, LAWA Airfield Manager, jmort@lawa.org

Issue Date: January 29th, 2019

Subject: Taxilane C9 Closure

*The LAX Operations Advisory will be posted on LAWA's Airport Operations website and can be retrieved at <http://www.lawa.org/aiops.aspx>





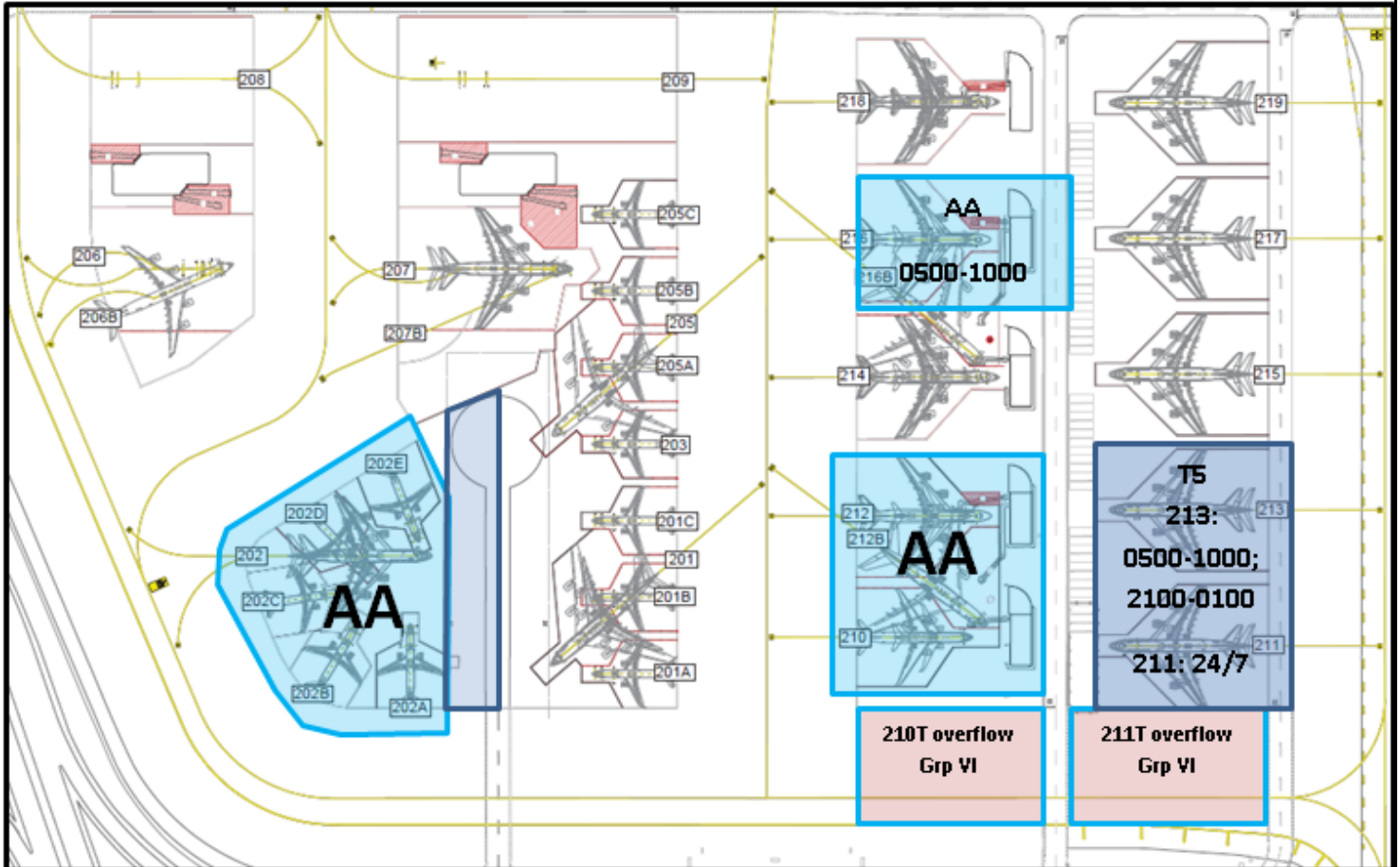
Issue

Subject: Taxilane C9 Closure

*The LAX Operations Advisory will be posted on LAWA's Airport Operations website and can be retrieved at <http://www.lawa.org/airops.aspx>



Remote Gate Accommodations during C9 Closure



Issue Date: January 29th, 2019

Subject: Taxilane C9 Closure

*The LAX Operations Advisory will be posted on LAWA's Airport Operations website and can be retrieved at <http://www.lawa.org/airops.aspx>

