

TAXILANE C8 CLOSURE

Taxilane C8 between Terminals Five and Six will be closed for keel section pavement repairs from **0001L on February 19, 2019, to 2359L on February 21, 2019**. The purpose of this work is to repair extensive rutting and depressions along the centerline and main gear track. This work will be completed by LAWA Paving Crew.

This closure impacts Terminal 5 and Terminal 6 Operations: Alaska Airlines, American Airlines and Terminal 5 Airlines.

Terminal 5 Gate Closures and Modifications:

- Closed - Gates 50A, 50B, 54A, 54B, 56
- Impacted - Gate 58 will remain open with a modified lead-in line

Terminal 6 Gate Closures and Modifications:

- Closed - Gates 61, 63, 65A, 65B, and 67 will be closed
- Impacted - Gate 69A will remain open with a modified lead-in line

Alaska Airlines, T5 Airlines will be accommodated at the West Remote Gates and will be supported by LAWA Bus Operations. American Airlines will be accommodated on Gate 151.

Thank you for your support.

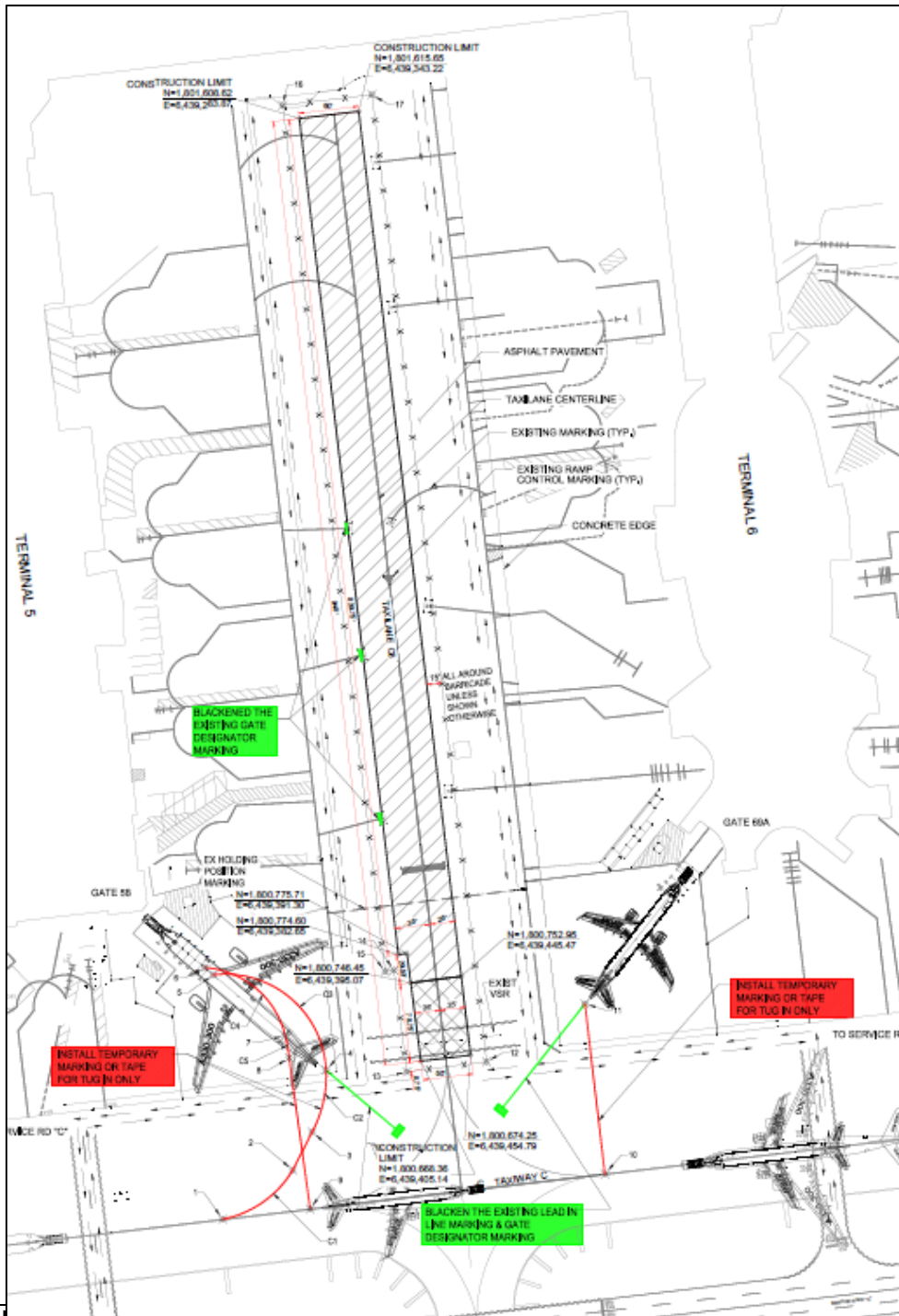
For questions or comments regarding this advisory please contact Jeff Mort, LAWA Airfield Manager, jmort@lawa.org

Issue Date: February 13, 2019

Subject: Taxilane C8 Closure

*The LAX Operations Advisory will be posted on LAWA's Airport Operations website and can be retrieved at <http://www.lawa.org/airops.aspx>





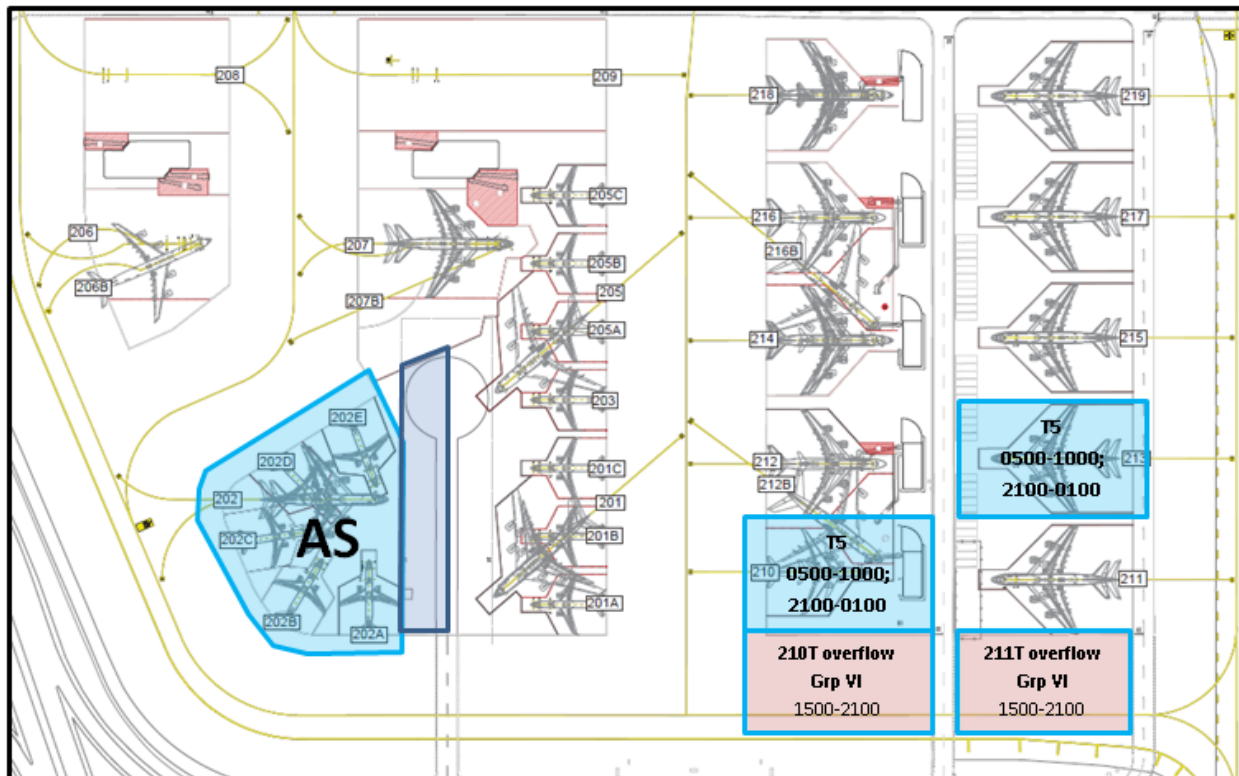
Issue Date: February 13, 2019

Subject: Taxiway C8 Closure

*The LAX Operations Advisory will be posted on LAWA's Airport Operations website and can be retrieved at <http://www.lawa.org/airops.aspx>



Remote Gate Accommodations during C8 Closure



Issue Date: February 13, 2019

Subject: Taxiway C8 Closure

*The LAX Operations Advisory will be posted on LAWA's Airport Operations website and can be retrieved at <http://www.lawa.org/airops.aspx>

