

LAWA Capital Improvement Program Update

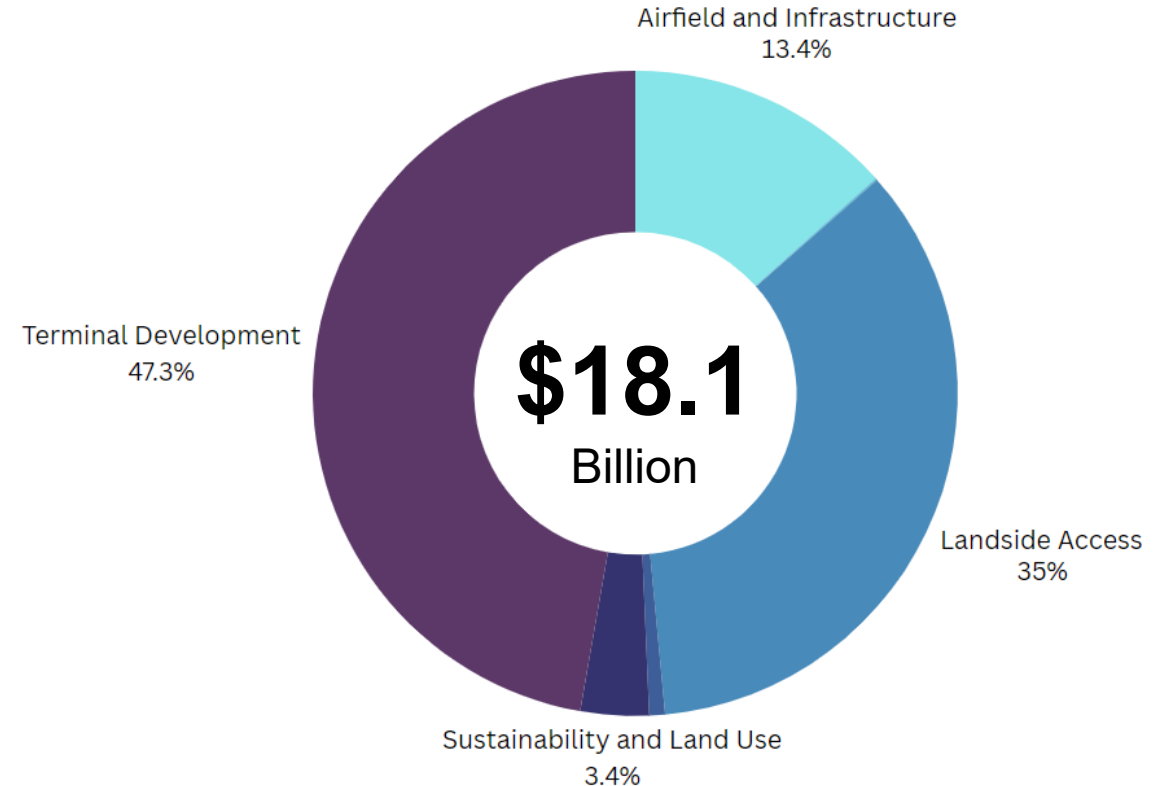


Capital Improvement Program (CIP)

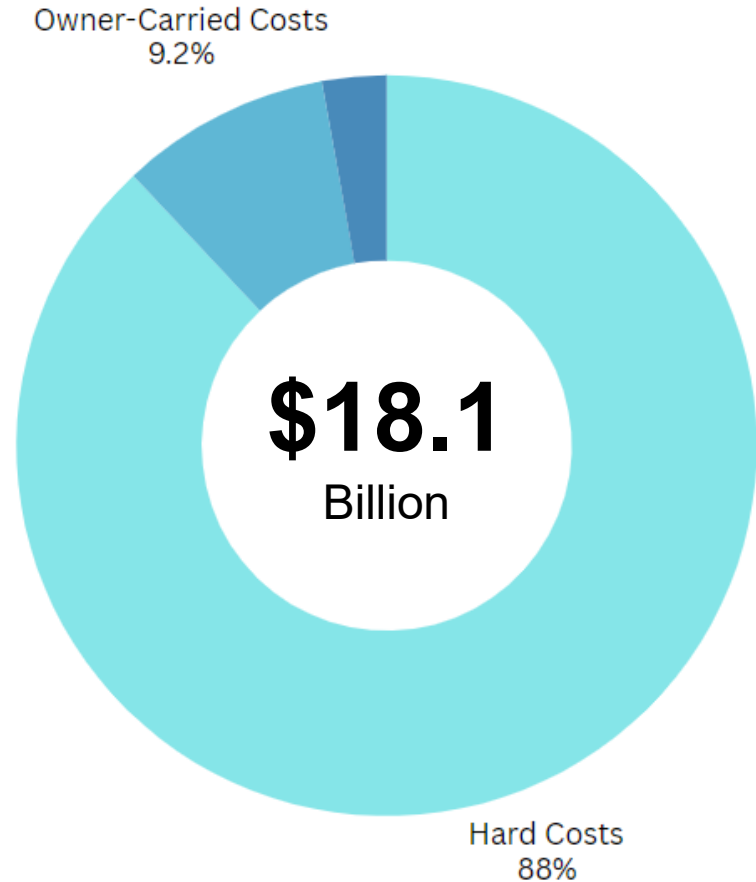
LAWA has one of the industry's largest and most complex Capital Programs

- The first \$15.1 billion investment launched in 2018 and is 78% complete
- LAWA intends to fund a second round of investments of similar size
- The second round of investments has obtained \$3 billion in approvals with most projects in the planning or design phase

Current Approved CIP



CIP Budget Breakdown



The current budget includes costs needed to deliver the program

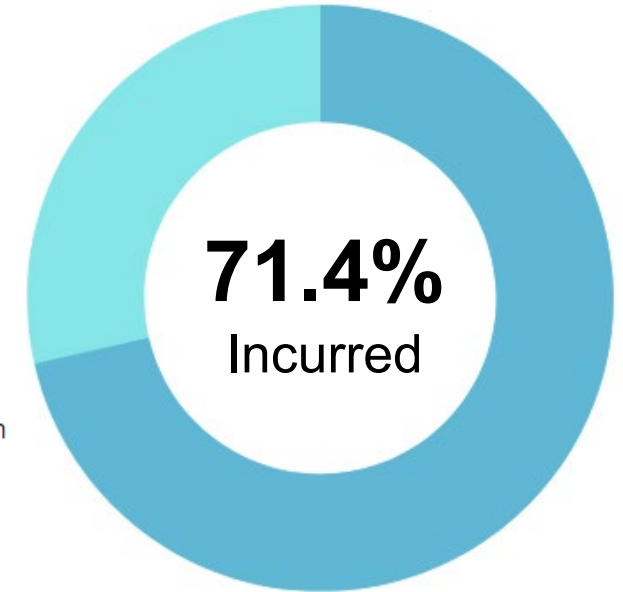
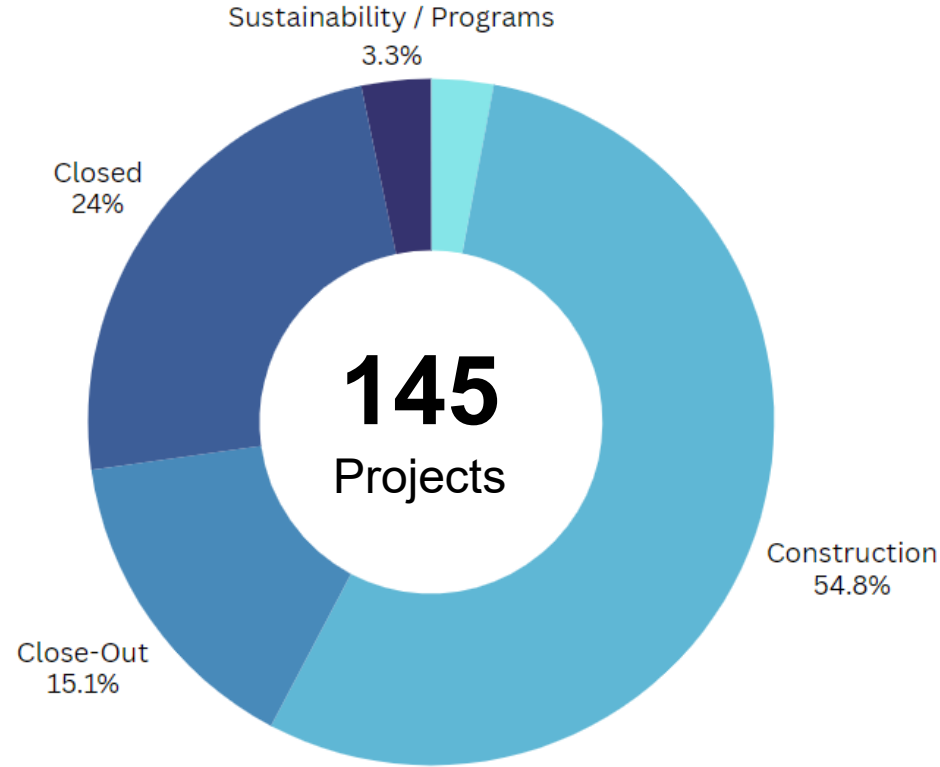
- \$15.96 billion of the budget is hard costs:
 - Construction
 - Design
 - City Agency Support
 - Planned payments for terminal acquisitions
- \$1.67 billion is owner-carried (soft) costs:
 - Project Oversight
 - Design and Design Management
 - Inspections
 - Overhead
- \$456 million in currently available contingency

CIP Progress

LAWA has made significant strides in delivering the CIP

Of the currently 145 currently approved or partially-approved projects:

- 90 have closed or are in-service
- 22 are in active construction
- 27 are in planning or design
- 6 are non-construction initiatives and programs



Major Project Status

- **Completed or in-service projects**

- West Gates at TBIT
- LAX Economy Parking
- Consolidated Rent-A-Car Facility*
- Airport Police Facility
- Modernization of Terminals 1, 2/3*, 6*, 7 and 8
- Smart Parking
- Terminal Vertical Cores*
- Terminal 1.5 Program
- Taxiway D Extension*

- **Major projects currently in construction**

- Automated People Mover
- Modernization of Terminals 4/5
- Power Receiving Station
- North Airfield Exit Taxiways
- South Extension to West Gates at TBIT

- **Planning or design**

- Reconfigured Roadway Entrances to LAX Central Terminal Area
- VNY Taxiways Program
- Auxiliary Curbs Program
- Wayfinding Enhancement
- Asset Renewal Program

*denotes projects that have achieved substantial completion in the past 12 months.

Automated People Mover

- Will provide 24/7 service between terminals, LAX Economy Parking, L.A. Metro, and the Consolidated Rent-A-Car Facility
- Service every two minutes during peak hours with a 10-minute end to end ride
- Include 2.25 miles of elevated track and 44 vehicles
- Anticipated start of passenger service in early 2026



LAX



Midfield Satellite Concourse - South

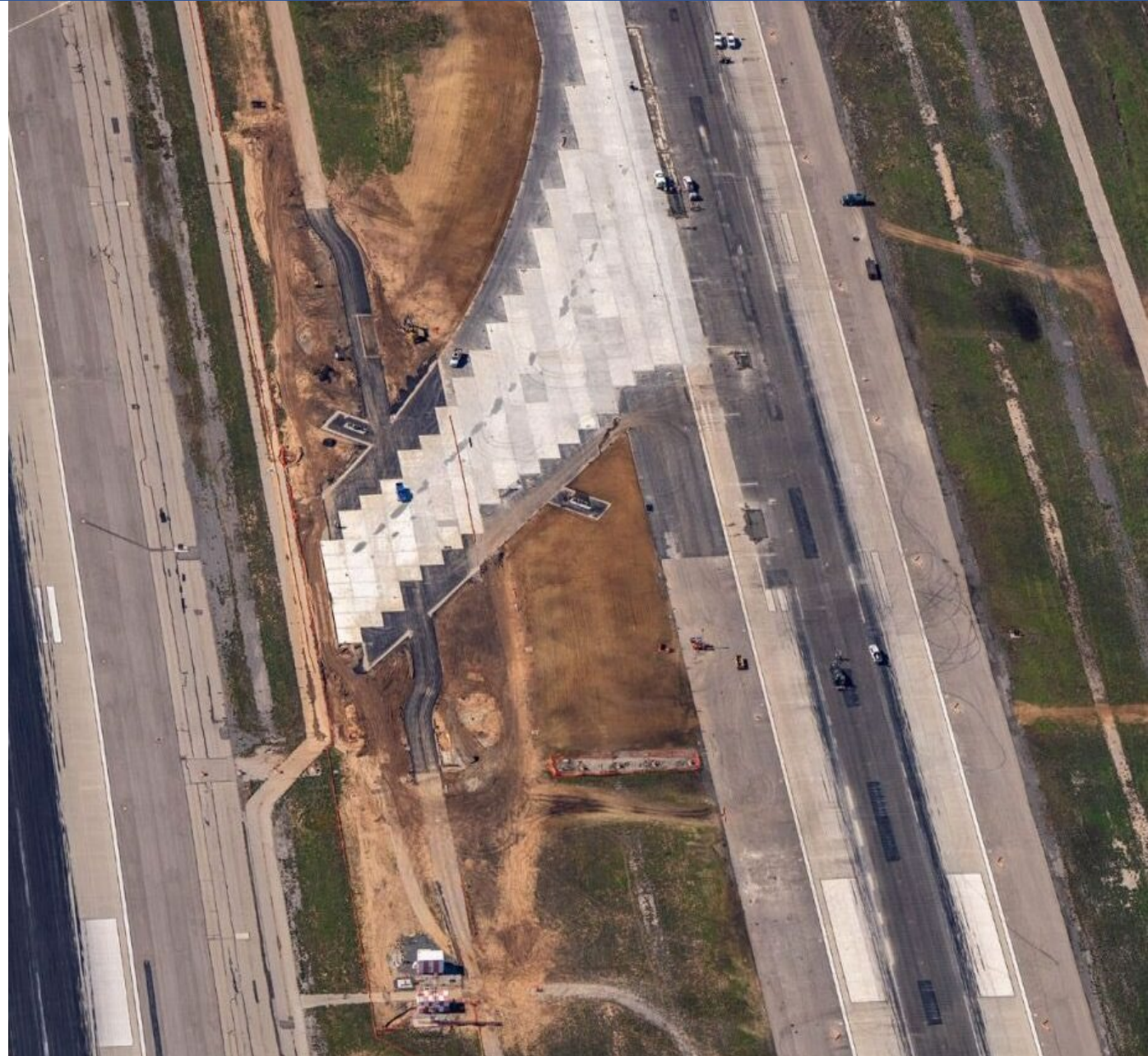
- 146,000 square ft. facility with eight new gates south of the existing West Gates at TBIT, with associated civil and airfield improvements
- Provides flexibility to accommodate relocated operations during improvements at other terminals
- Anticipated completion in late 2025



North Airfield Exit Taxiways & Runway Rehabilitation



- Replaces existing runway exit taxiways for improved safety and compliance with current FAA standards
- Rebuilds key areas of both North Airfield runways to extend their operating life and reduce operational disruptions and unplanned repairs
- Anticipated completion in November 2024

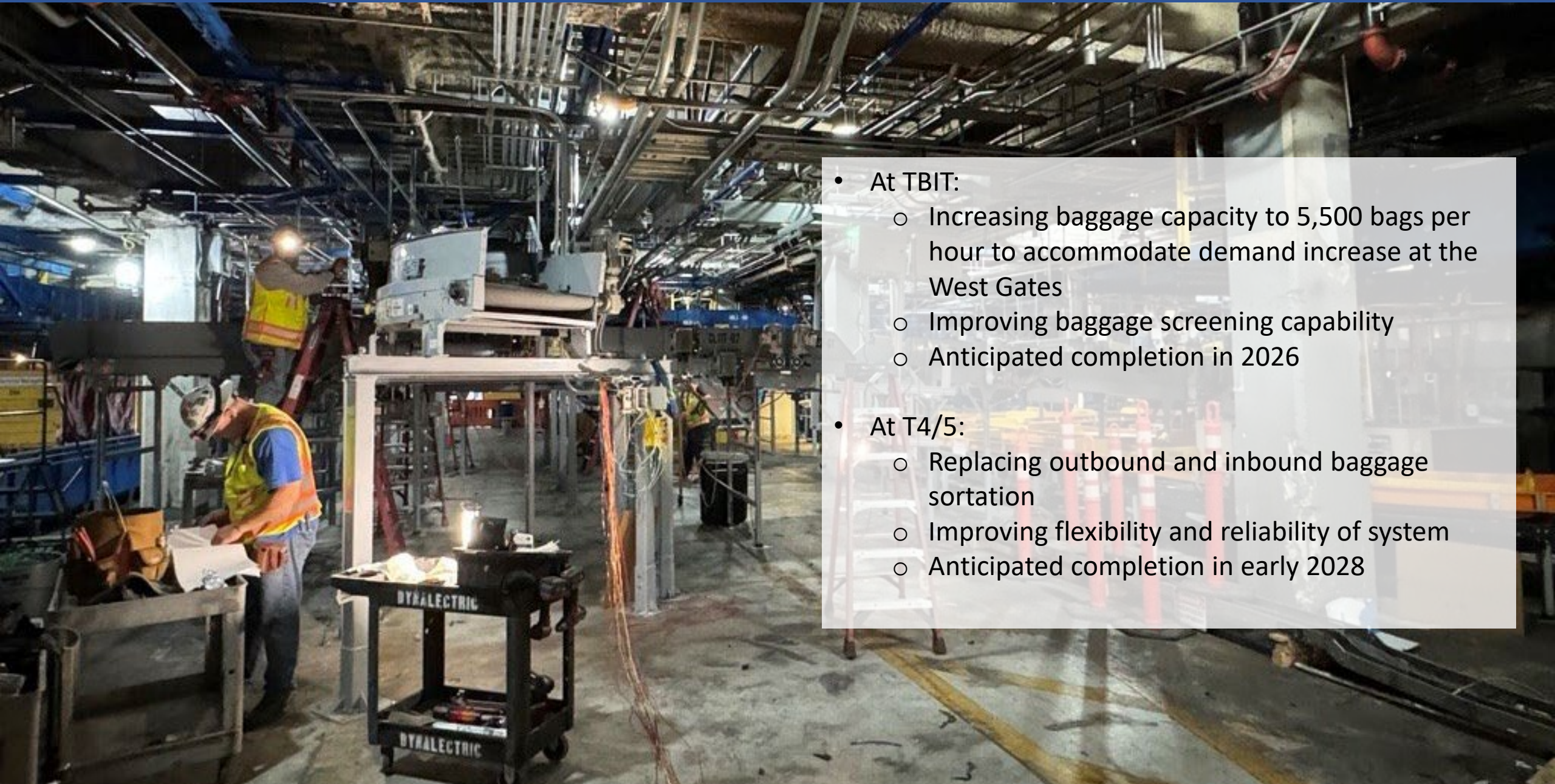


Terminal 4/5 Modernization



- Complete renewal of Terminal 4 and refurbishment of Terminal 5
- Development of central "head house" and direct connection to Automated People Mover station
- Regauging gates for added operational flexibility
- Anticipated completion in early 2028

Baggage Handling System Upgrades



- At TBIT:
 - Increasing baggage capacity to 5,500 bags per hour to accommodate demand increase at the West Gates
 - Improving baggage screening capability
 - Anticipated completion in 2026
- At T4/5:
 - Replacing outbound and inbound baggage sortation
 - Improving flexibility and reliability of system
 - Anticipated completion in early 2028

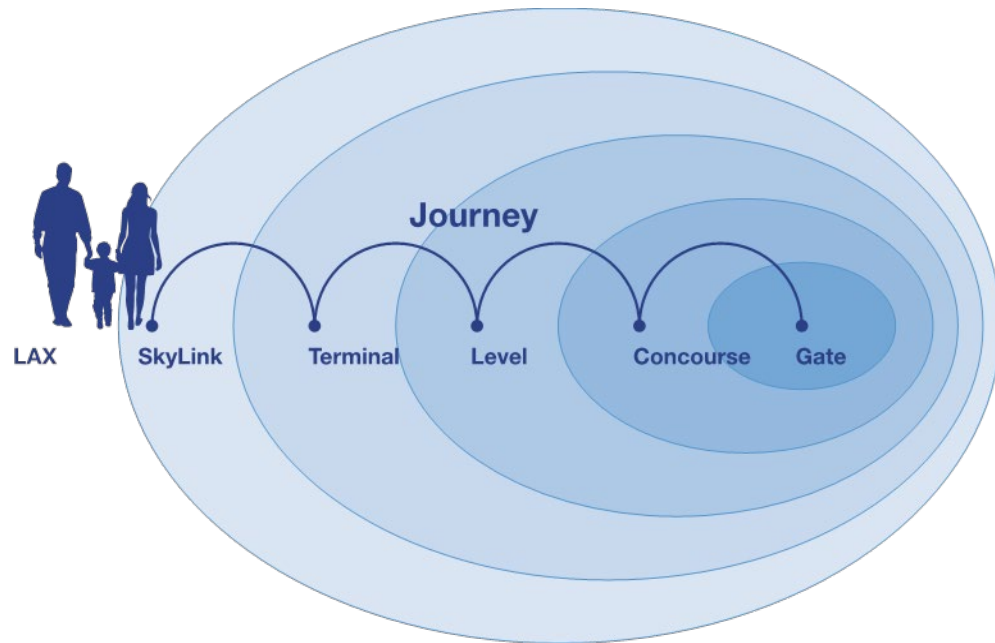
Intermodal Transportation Facility Auxiliary Curbs

- Adds 7,300 feet of new curb-front at off-airport Automated People Mover stations to provide passenger pickup/drop-off areas without the need to drive into the terminal area
- Includes canopies, an Art Wall, technology upgrades, and roadway and drainage improvements
- Anticipated completion in early 2026

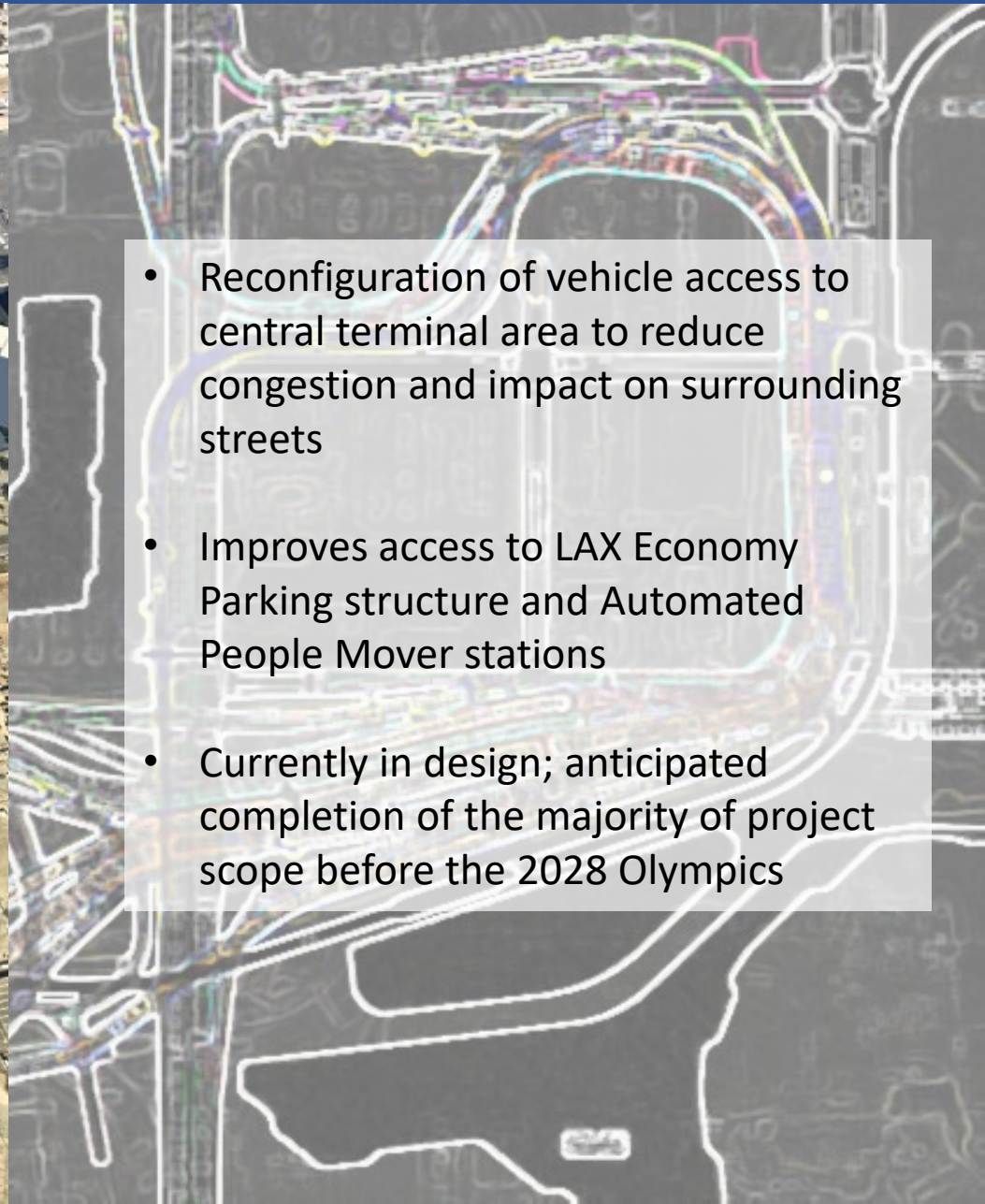
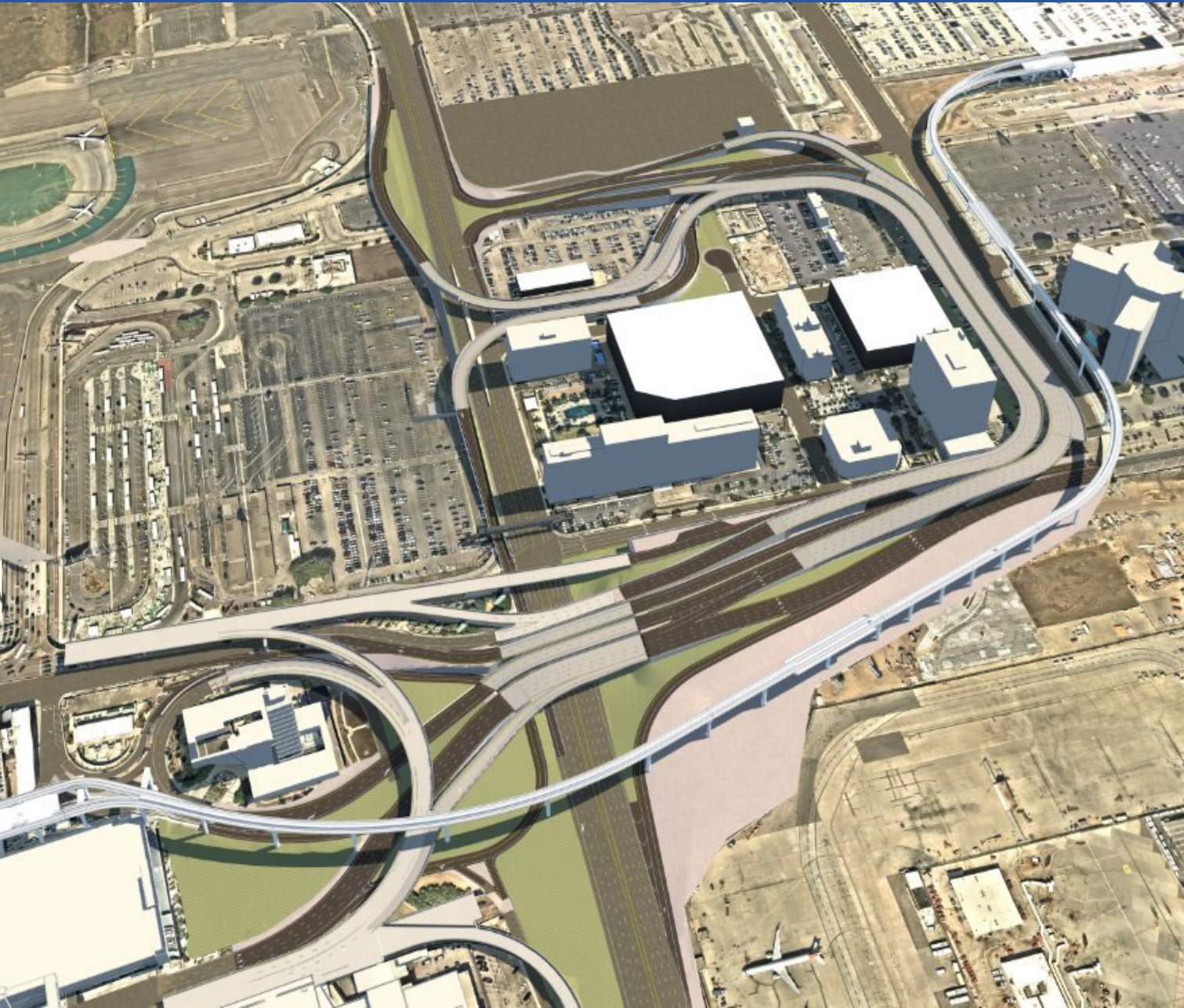


Wayfinding Enhancement Program

- Comprehensive update to wayfinding across LAX facilities, including static and dynamic signage
- Anticipated completion in mid-2027



ATMP Roadway Improvements



- Reconfiguration of vehicle access to central terminal area to reduce congestion and impact on surrounding streets
- Improves access to LAX Economy Parking structure and Automated People Mover stations
- Currently in design; anticipated completion of the majority of project scope before the 2028 Olympics

Safety Performance

Safety Metric	National Average	LAWA Target	Rolling 12-Month Performance
Total Recordable Incidents	2.4	.8	.76
Lost Time	.99	.33	.09

LAWA's aggressive safety targets continue to provide stellar outcomes

LAWA's targets for recordables and lost time are set at 1/3rd the national average, and LAWA is exceeding that goal across the Program.





Questions?

LOS ANGELES WORLD AIRPORTS

LAWA
LOS ANGELES WORLD AIRPORTS