

Appendix J3
LAX SPECIFIC PLAN AMENDMENT STUDY

Transit Noise and Vibration

July 2012

Prepared for:

Los Angeles World Airports
One World Way
Los Angeles, California 90045

Prepared by:

CDM Smith
111 Academy Way, Suite 150
Irvine, CA 92617

Attachments

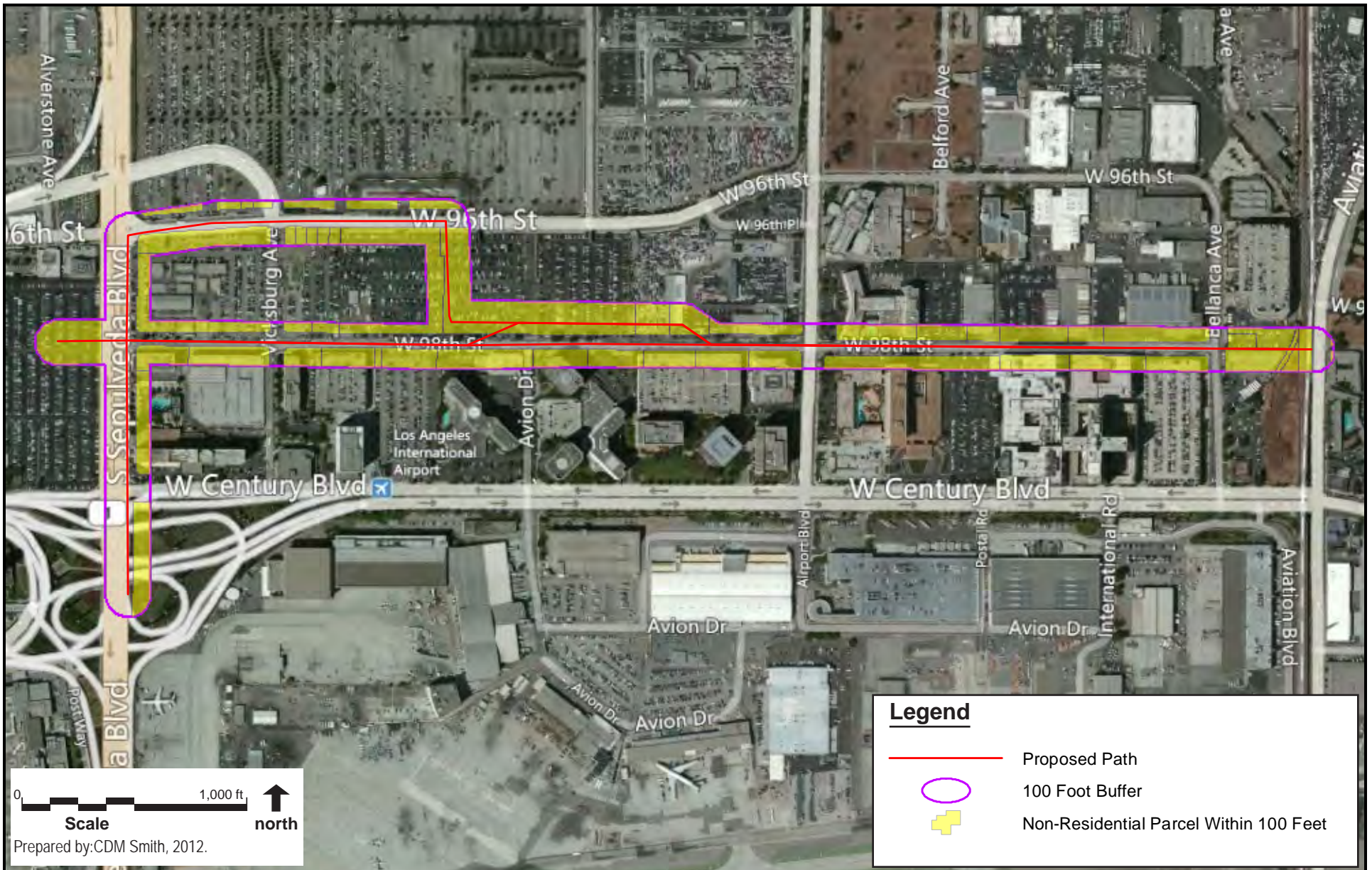
Attachment 1 Transit Analysis Screening Analysis Buffer Areas

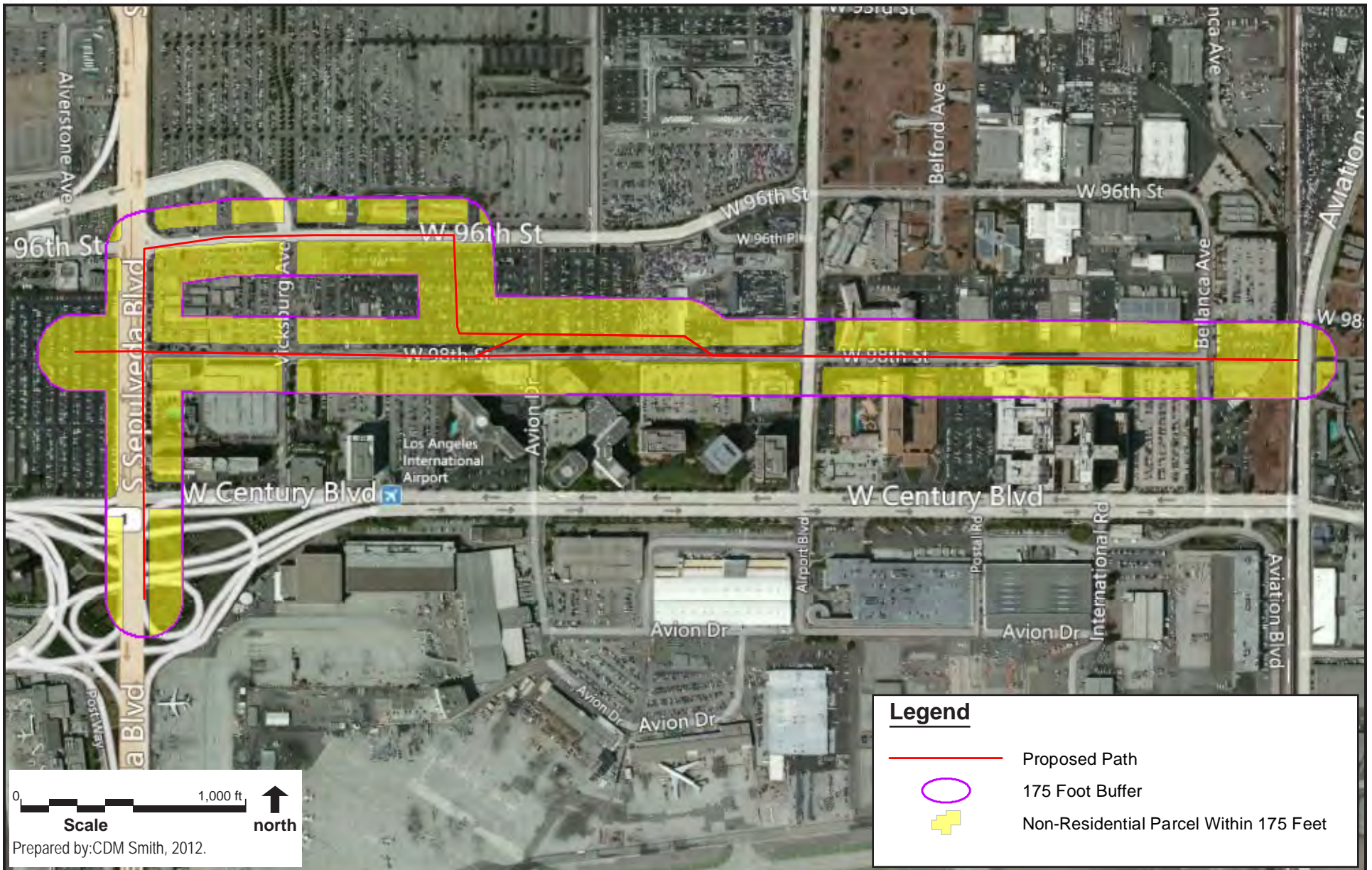
Attachment 2 Calculations

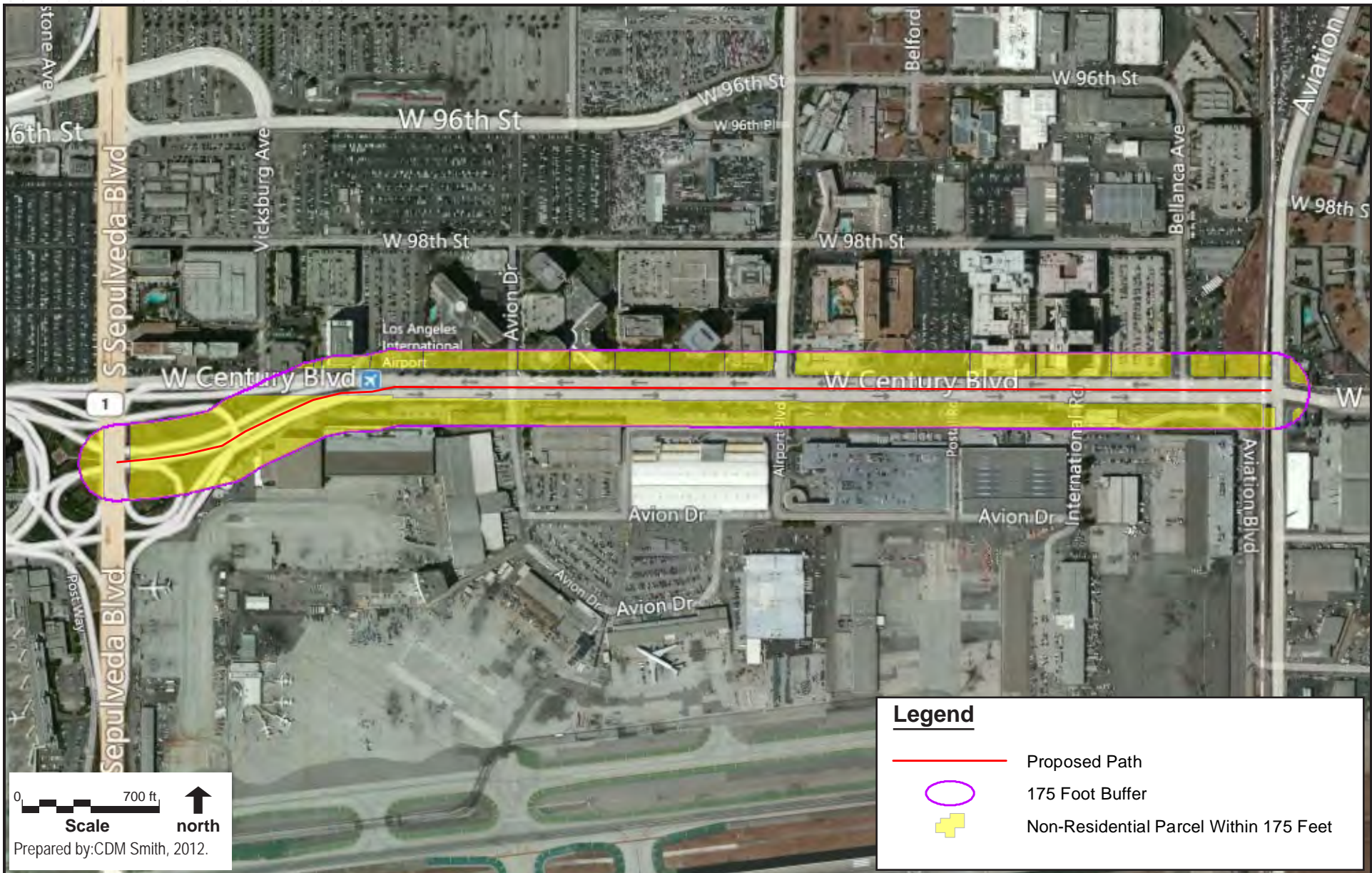
Table of Contents (continued)

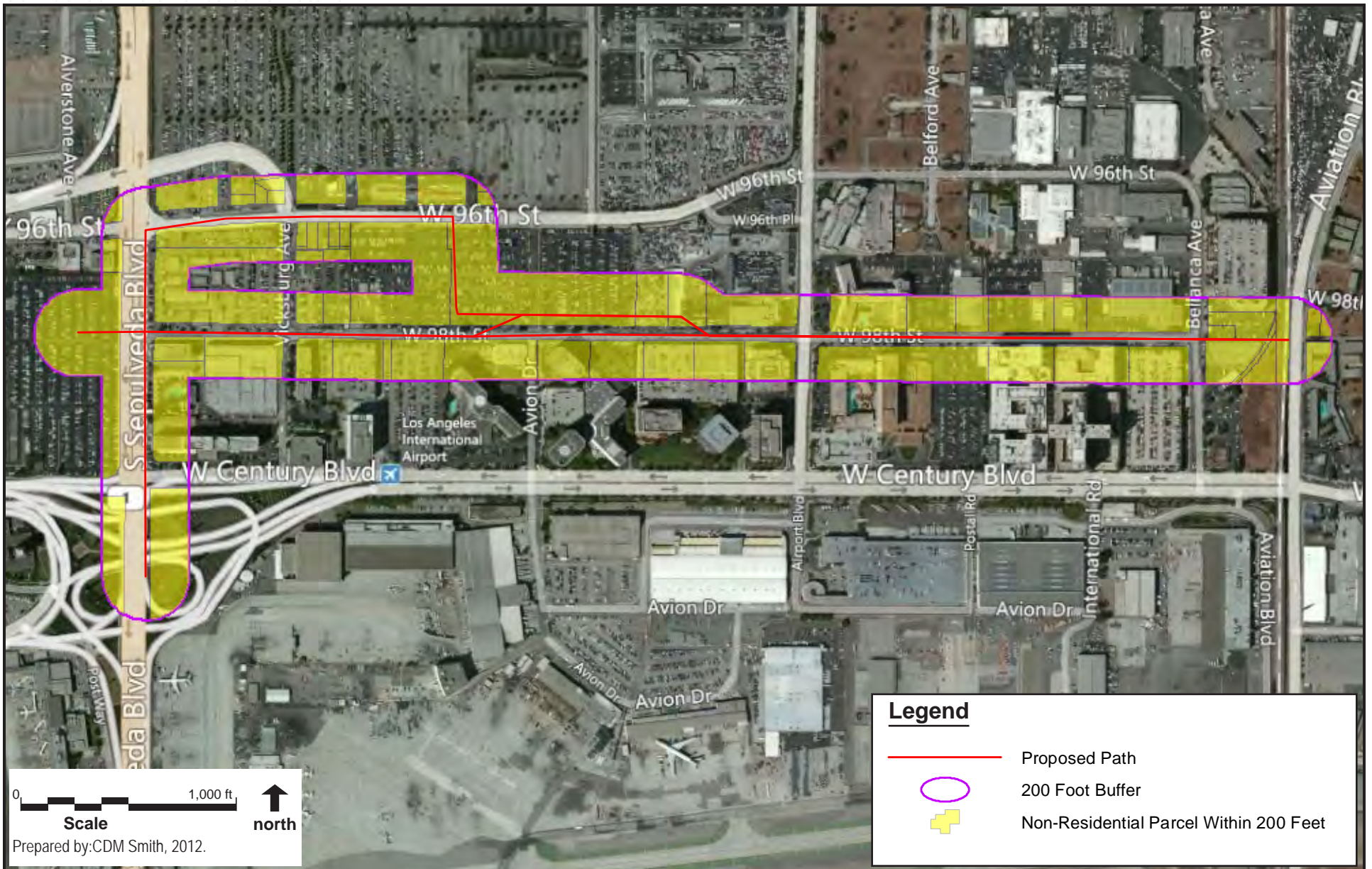
This page intentionally left blank.

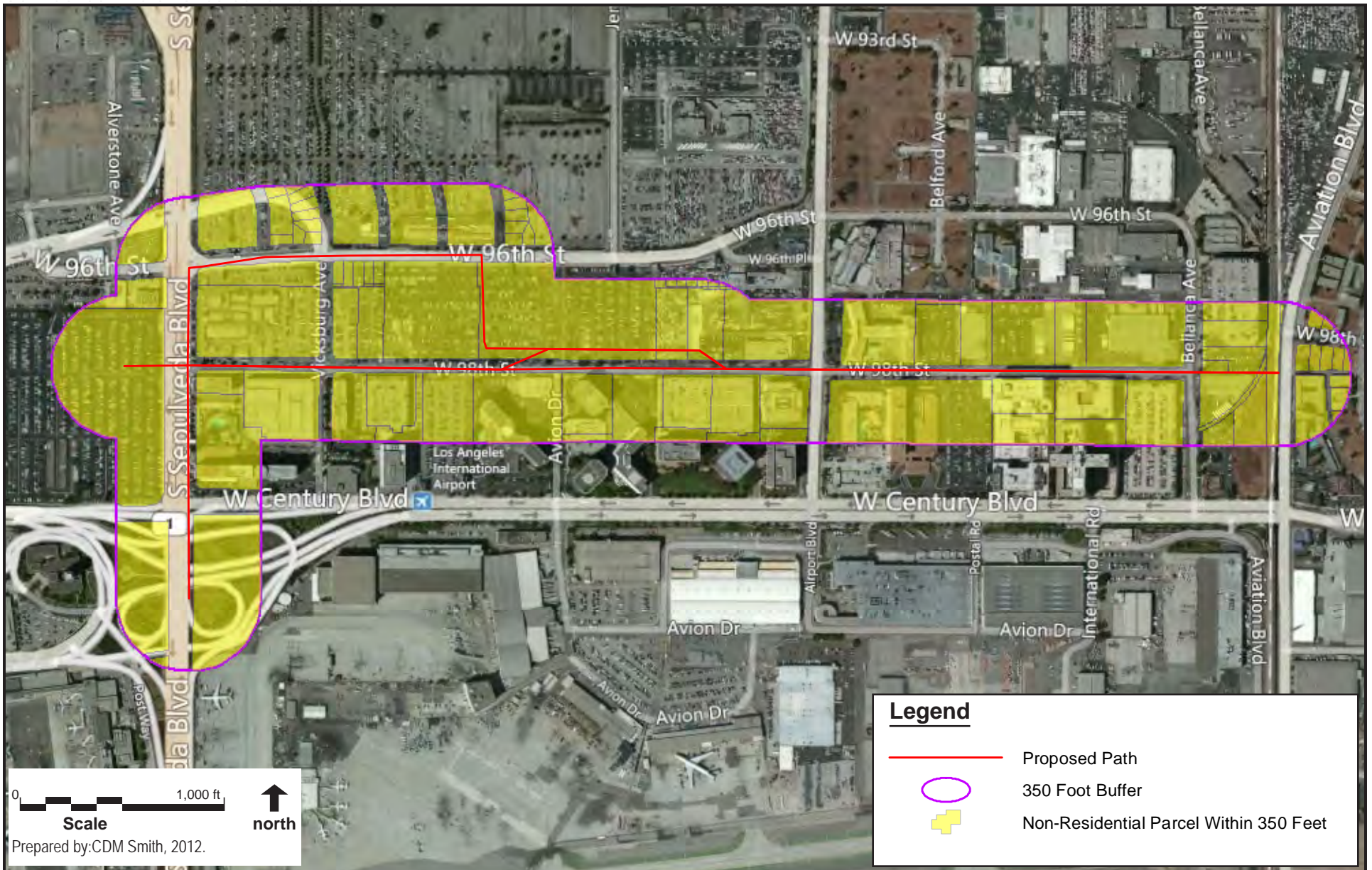
Attachment 1
Transit Analysis Screening Analysis Buffer Areas

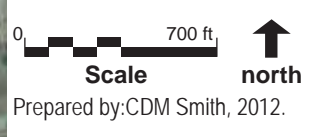
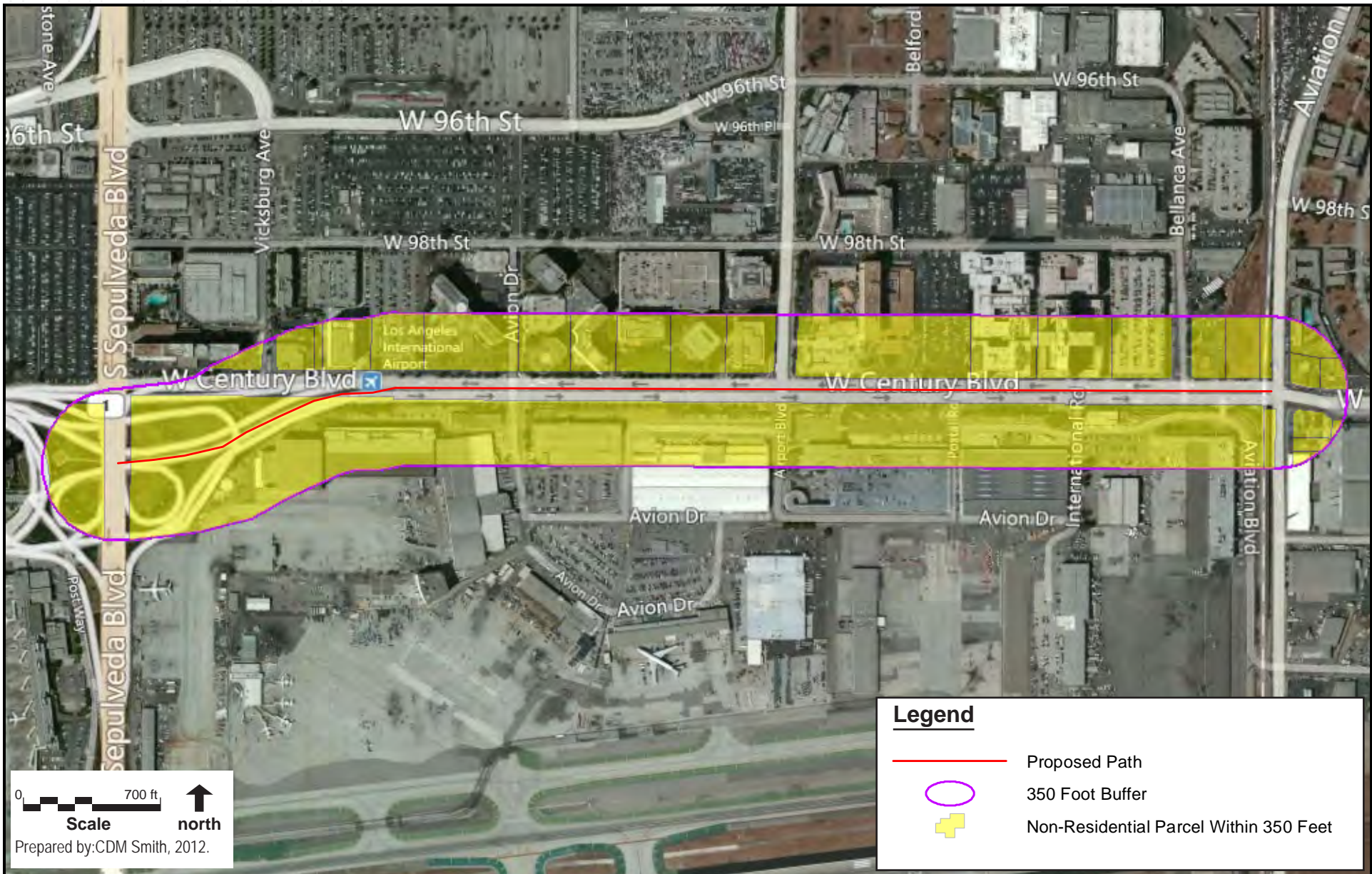






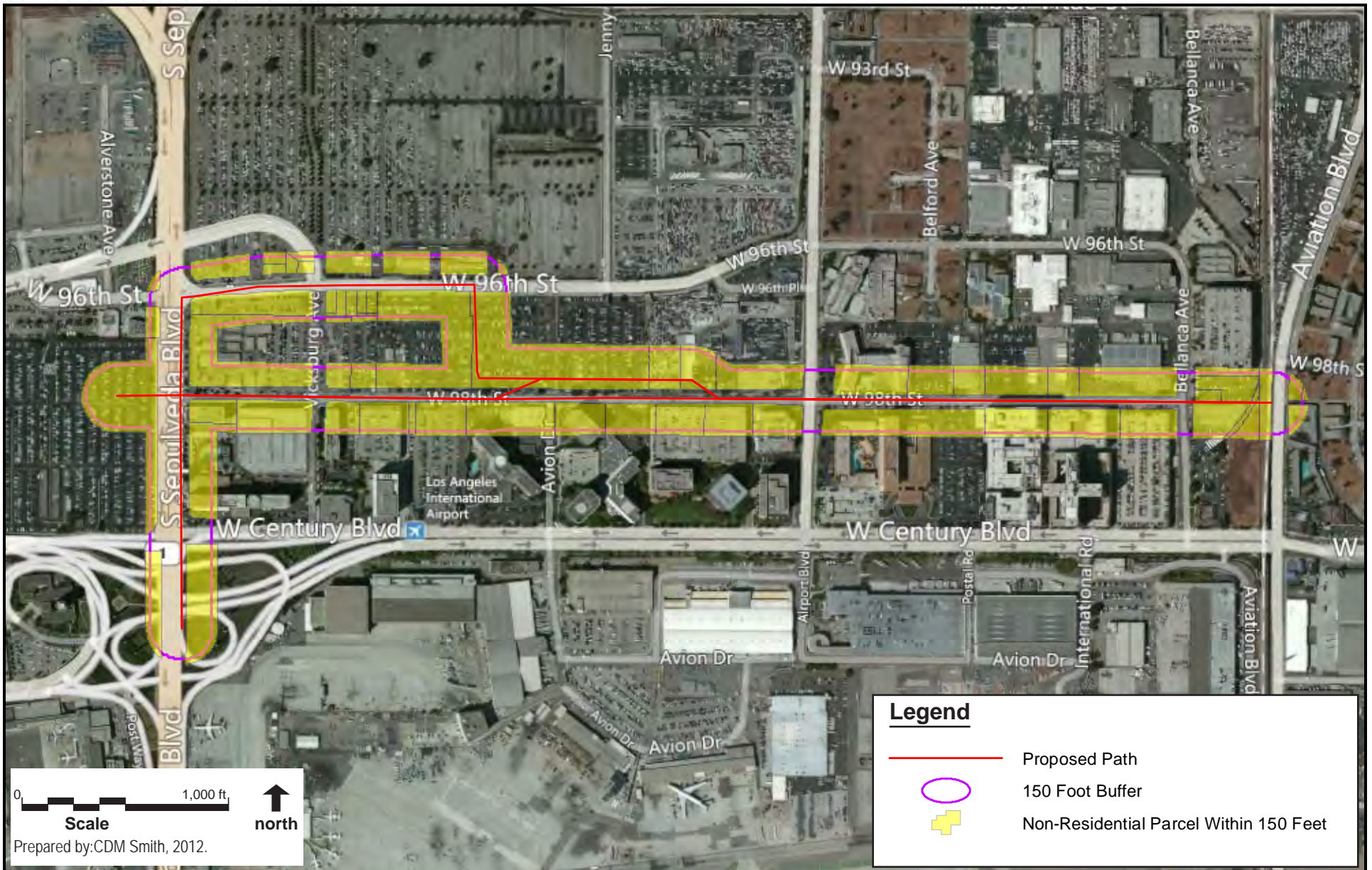






Legend

- Proposed Path
- 350 Foot Buffer
- + Non-Residential Parcel Within 350 Feet





Attachment 2

Calculations

Alternative 1

Federal Transit Administration
 Noise Impact Assessment Spreadsheet
 Copyright 2007 HMMH Inc.
 version: 7/3/2007

Project:	LAX Master Plan EIS
-----------------	---------------------

Receiver Parameters	
Receiver:	Receiver 1 - Radisson Hotel
Land Use Category:	2. Residential
Existing Noise (Measured or Generic Value):	68 dBA

Noise Source Parameters	
Number of Noise Sources:	1

Noise Source Parameters		Source 1
	Source Type:	Highway/Transit
	Specific Source:	Buses (diesel-powered)
Daytime hrs	Speed (mph)	35
	Avg. Number of Events/hr	54
Nighttime hrs	Speed (mph)	40
	Avg. Number of Events/hr	20
Distance	Distance from Source to Receiver (ft)	371
	Number of Intervening Rows of Buildings	1
Adjustments	Noise Barrier?	No

Project Results Summary

Existing Ldn:	68 dBA
Total Project Ldn:	48 dBA
Total Noise Exposure:	68 dBA
Increase:	0 dB
Impact?:	None

Distance to Impact Contours

Dist to Mod. Impact Contour (Source 1):	70 ft
Dist to Sev. Impact Contour (Source 1):	31 ft

Source 1 Results

Leq(day):	43.8 dBA
Leq(night):	40.4 dBA
Ldn:	47.5 dBA

Project: LAX Master Plan EIS
Receiver: Receiver 1 - Radisson Hotel

Source	Distance	Project Ldn	Existing Ldn	Noise Criteria		Impact?
				Mod. Impact	Sev. Impact	
1 Buses (diesel-powered)	371 ft	47.5 dBA	68 dBA	63 dBA	68 dBA	None
2 --	50 ft		68 dBA	63 dBA	68 dBA	
3 --	ft		68 dBA	63 dBA	68 dBA	
4 --	ft		68 dBA	63 dBA	68 dBA	
5 --	ft		68 dBA	63 dBA	68 dBA	
6 --	ft		68 dBA	63 dBA	68 dBA	
Combined Sources		48 dBA	68 dBA	63 dBA	68 dBA	None

Federal Transit Administration
 Noise Impact Assessment Spreadsheet
 Copyright 2007 HMMH Inc.
 version: 7/3/2007

Project:	LAX Master Plan EIS
-----------------	---------------------

Receiver Parameters	
Receiver:	Receiver 2 - Courtyard by Marriott
Land Use Category:	2. Residential
Existing Noise (Measured or Generic Value):	67 dBA

Noise Source Parameters	
Number of Noise Sources:	1

Noise Source Parameters		Source 1
	Source Type:	Highway/Transit
	Specific Source:	Buses (diesel-powered)
Daytime hrs	Speed (mph)	35
	Avg. Number of Events/hr	54
Nighttime hrs	Speed (mph)	40
	Avg. Number of Events/hr	20
Distance	Distance from Source to Receiver (ft)	46
	Number of Intervening Rows of Buildings	0
Adjustments	Noise Barrier?	No

Project Results Summary

Existing Ldn:	67 dBA
Total Project Ldn:	66 dBA
Total Noise Exposure:	69 dBA
Increase:	2 dB
Impact?:	Moderate

Distance to Impact Contours

Dist to Mod. Impact Contour (Source 1):	78 ft
Dist to Sev. Impact Contour (Source 1):	35 ft

Source 1 Results

Leq(day):	61.9 dBA
Leq(night):	58.5 dBA
Ldn:	65.6 dBA

Project: LAX Master Plan EIS
Receiver: Receiver 2 - Courtyard by Marriott

Source	Distance	Project Ldn	Existing Ldn	Noise Criteria		Impact?
				Mod. Impact	Sev. Impact	
1 Buses (diesel-powered)	46 ft	65.6 dBA	67 dBA	62 dBA	67 dBA	Moderate Impact
2 --	50 ft		67 dBA	62 dBA	67 dBA	
3 --	ft		67 dBA	62 dBA	67 dBA	
4 --	ft		67 dBA	62 dBA	67 dBA	
5 --	ft		67 dBA	62 dBA	67 dBA	
6 --	ft		67 dBA	62 dBA	67 dBA	
Combined Sources		66 dBA	67 dBA	62 dBA	67 dBA	Moderate Impact

Federal Transit Administration
 Noise Impact Assessment Spreadsheet
 Copyright 2007 HMMH Inc.
 version: 7/3/2007

Project:	LAX Master Plan EIS
-----------------	---------------------

Receiver Parameters	
Receiver:	Receiver 3 - Shearton Hotel
Land Use Category:	2. Residential
Existing Noise (Measured or Generic Value):	69 dBA

Noise Source Parameters	
Number of Noise Sources:	1

Noise Source Parameters		Source 1
	Source Type:	Highway/Transit
	Specific Source:	Buses (diesel-powered)
Daytime hrs	Speed (mph)	35
	Avg. Number of Events/hr	54
Nighttime hrs	Speed (mph)	40
	Avg. Number of Events/hr	20
Distance	Distance from Source to Receiver (ft)	138
	Number of Intervening Rows of Buildings	0
Adjustments	Noise Barrier?	No

Project Results Summary

Existing Ldn:	69 dBA
Total Project Ldn:	58 dBA
Total Noise Exposure:	69 dBA
Increase:	0 dB
Impact?:	None

Distance to Impact Contours

Dist to Mod. Impact Contour (Source 1):	62 ft
Dist to Sev. Impact Contour (Source 1):	28 ft

Source 1 Results

Leq(day):	54.8 dBA
Leq(night):	51.3 dBA
Ldn:	58.4 dBA

Project: LAX Master Plan EIS
Receiver: Receiver 3 - Shearton Hotel

Source	Distance	Project Ldn	Existing Ldn	Noise Criteria		Impact?
				Mod. Impact	Sev. Impact	
1 Buses (diesel-powered)	138 ft	58.4 dBA	69 dBA	64 dBA	69 dBA	None
2 --	50 ft		69 dBA	64 dBA	69 dBA	
3 --	ft		69 dBA	64 dBA	69 dBA	
4 --	ft		69 dBA	64 dBA	69 dBA	
5 --	ft		69 dBA	64 dBA	69 dBA	
6 --	ft		69 dBA	64 dBA	69 dBA	
Combined Sources		58 dBA	69 dBA	64 dBA	69 dBA	None

Federal Transit Administration
 Noise Impact Assessment Spreadsheet
 Copyright 2007 HMMH Inc.
 version: 7/3/2007

Project:	LAX Master Plan EIS
-----------------	---------------------

Receiver Parameters	
Receiver:	Receiver 4 - Crown Plaza Hotels
Land Use Category:	2. Residential
Existing Noise (Measured or Generic Value):	68 dBA

Noise Source Parameters	
Number of Noise Sources:	1

Noise Source Parameters		Source 1
	Source Type:	Highway/Transit
	Specific Source:	Buses (diesel-powered)
Daytime hrs	Speed (mph)	35
	Avg. Number of Events/hr	54
Nighttime hrs	Speed (mph)	40
	Avg. Number of Events/hr	20
Distance	Distance from Source to Receiver (ft)	435
	Number of Intervening Rows of Buildings	1
Adjustments	Noise Barrier?	No

Project Results Summary

Existing Ldn:	68 dBA
Total Project Ldn:	46 dBA
Total Noise Exposure:	68 dBA
Increase:	0 dB
Impact?:	None

Distance to Impact Contours

Dist to Mod. Impact Contour (Source 1):	70 ft
Dist to Sev. Impact Contour (Source 1):	31 ft

Source 1 Results

Leq(day):	42.8 dBA
Leq(night):	39.4 dBA
Ldn:	46.5 dBA

Project: LAX Master Plan EIS
Receiver: Receiver 4 - Crown Plaza Hotels

Source	Distance	Project Ldn	Existing Ldn	Noise Criteria		Impact?
				Mod. Impact	Sev. Impact	
1 Buses (diesel-powered)	435 ft	46.5 dBA	68 dBA	63 dBA	68 dBA	None
2 --	50 ft		68 dBA	63 dBA	68 dBA	
3 --	ft		68 dBA	63 dBA	68 dBA	
4 --	ft		68 dBA	63 dBA	68 dBA	
5 --	ft		68 dBA	63 dBA	68 dBA	
6 --	ft		68 dBA	63 dBA	68 dBA	
Combined Sources		46 dBA	68 dBA	63 dBA	68 dBA	None

Federal Transit Administration
 Noise Impact Assessment Spreadsheet
 Copyright 2007 HMMH Inc.
 version: 7/3/2007

Project:	LAX Master Plan EIS
-----------------	---------------------

Receiver Parameters	
Receiver:	Receiver 5 - Embassy Suites
Land Use Category:	2. Residential
Existing Noise (Measured or Generic Value):	68 dBA

Noise Source Parameters	
Number of Noise Sources:	1

Noise Source Parameters		Source 1
	Source Type:	Highway/Transit
	Specific Source:	Buses (diesel-powered)
Daytime hrs	Speed (mph)	35
	Avg. Number of Events/hr	54
Nighttime hrs	Speed (mph)	40
	Avg. Number of Events/hr	20
Distance	Distance from Source to Receiver (ft)	49
	Number of Intervening Rows of Buildings	0
Adjustments	Noise Barrier?	No

Project Results Summary

Existing Ldn:	68 dBA
Total Project Ldn:	65 dBA
Total Noise Exposure:	70 dBA
Increase:	2 dB
Impact?:	Moderate

Distance to Impact Contours

Dist to Mod. Impact Contour (Source 1):	70 ft
Dist to Sev. Impact Contour (Source 1):	31 ft

Source 1 Results

Leq(day):	61.5 dBA
Leq(night):	58.1 dBA
Ldn:	65.2 dBA

Project: LAX Master Plan EIS
 Receiver: Receiver 5 - Embassy Suites

Source	Distance	Project Ldn	Existing Ldn	Noise Criteria		Impact?
				Mod. Impact	Sev. Impact	
1 Buses (diesel-powered)	49 ft	65.2 dBA	68 dBA	63 dBA	68 dBA	Moderate Impact
2 --	50 ft		68 dBA	63 dBA	68 dBA	
3 --	ft		68 dBA	63 dBA	68 dBA	
4 --	ft		68 dBA	63 dBA	68 dBA	
5 --	ft		68 dBA	63 dBA	68 dBA	
6 --	ft		68 dBA	63 dBA	68 dBA	
Combined Sources		65 dBA	68 dBA	63 dBA	68 dBA	Moderate Impact

Federal Transit Administration
 Noise Impact Assessment Spreadsheet
 Copyright 2007 HMMH Inc.
 version: 7/3/2007

Project:	LAX Master Plan EIS
-----------------	---------------------

Receiver Parameters	
Receiver:	Receiver 6 -Rebaussance Hotel
Land Use Category:	2. Residential
Existing Noise (Measured or Generic Value):	67 dBA

Noise Source Parameters	
Number of Noise Sources:	1

Noise Source Parameters		Source 1
	Source Type:	Highway/Transit
	Specific Source:	Buses (diesel-powered)
Daytime hrs	Speed (mph)	35
	Avg. Number of Events/hr	54
Nighttime hrs	Speed (mph)	40
	Avg. Number of Events/hr	20
Distance	Distance from Source to Receiver (ft)	60
	Number of Intervening Rows of Buildings	0
Adjustments	Noise Barrier?	No

Project Results Summary

Existing Ldn:	67 dBA
Total Project Ldn:	64 dBA
Total Noise Exposure:	69 dBA
Increase:	2 dB
Impact?:	Moderate

Distance to Impact Contours

Dist to Mod. Impact Contour (Source 1):	78 ft
Dist to Sev. Impact Contour (Source 1):	35 ft

Source 1 Results

Leq(day):	60.2 dBA
Leq(night):	56.8 dBA
Ldn:	63.9 dBA

Project: LAX Master Plan EIS
 Receiver: Receiver 6 -Rebaussance Hotel

Source	Distance	Project Ldn	Existing Ldn	Noise Criteria		Impact?
				Mod. Impact	Sev. Impact	
1 Buses (diesel-powered)	60 ft	63.9 dBA	67 dBA	62 dBA	67 dBA	Moderate Impact
2 --	50 ft		67 dBA	62 dBA	67 dBA	
3 --	ft		67 dBA	62 dBA	67 dBA	
4 --	ft		67 dBA	62 dBA	67 dBA	
5 --	ft		67 dBA	62 dBA	67 dBA	
6 --	ft		67 dBA	62 dBA	67 dBA	
Combined Sources		64 dBA	67 dBA	62 dBA	67 dBA	Moderate Impact

Federal Transit Administration
 Noise Impact Assessment Spreadsheet
 Copyright 2007 HMMH Inc.
 version: 7/3/2007

Project:	LAX Master Plan EIS
-----------------	---------------------

Receiver Parameters	
Receiver:	Receiver 7 - Four Points Shearaton
Land Use Category:	2. Residential
Existing Noise (Measured or Generic Value):	67 dBA

Noise Source Parameters	
Number of Noise Sources:	1

Noise Source Parameters		Source 1
	Source Type:	Highway/Transit
	Specific Source:	Buses (diesel-powered)
Daytime hrs	Speed (mph)	35
	Avg. Number of Events/hr	54
Nighttime hrs	Speed (mph)	40
	Avg. Number of Events/hr	20
Distance	Distance from Source to Receiver (ft)	35
	Number of Intervening Rows of Buildings	0
Adjustments	Noise Barrier?	No

Project Results Summary

Existing Ldn:	67 dBA
Total Project Ldn:	67 dBA
Total Noise Exposure:	70 dBA
Increase:	3 dB
Impact?:	Moderate

Distance to Impact Contours

Dist to Mod. Impact Contour (Source 1):	78 ft
Dist to Sev. Impact Contour (Source 1):	35 ft

Source 1 Results

Leq(day):	63.7 dBA
Leq(night):	60.3 dBA
Ldn:	67.4 dBA

Project: LAX Master Plan EIS
 Receiver: Receiver 7 - Four Points Shearaton

Source	Distance	Project Ldn	Existing Ldn	Noise Criteria		Impact?
				Mod. Impact	Sev. Impact	
1 Buses (diesel-powered)	35 ft	67.4 dBA	67 dBA	62 dBA	67 dBA	Moderate Impact
2 --	50 ft		67 dBA	62 dBA	67 dBA	
3 --	ft		67 dBA	62 dBA	67 dBA	
4 --	ft		67 dBA	62 dBA	67 dBA	
5 --	ft		67 dBA	62 dBA	67 dBA	
6 --	ft		67 dBA	62 dBA	67 dBA	
Combined Sources		67 dBA	67 dBA	62 dBA	67 dBA	Moderate Impact

Federal Transit Administration
 Noise Impact Assessment Spreadsheet
 Copyright 2007 HMMH Inc.
 version: 7/3/2007

Project:	LAX Master Plan EIS
-----------------	---------------------

Receiver Parameters	
Receiver:	Receiver 8-Marritot Hotel
Land Use Category:	2. Residential
Existing Noise (Measured or Generic Value):	69 dBA

Noise Source Parameters	
Number of Noise Sources:	1

Noise Source Parameters		Source 1
	Source Type:	Highway/Transit
	Specific Source:	Buses (diesel-powered)
Daytime hrs	Speed (mph)	35
	Avg. Number of Events/hr	54
Nighttime hrs	Speed (mph)	40
	Avg. Number of Events/hr	20
Distance	Distance from Source to Receiver (ft)	391
	Number of Intervening Rows of Buildings	1
Adjustments	Noise Barrier?	No

Project Results Summary

Existing Ldn:	69 dBA
Total Project Ldn:	47 dBA
Total Noise Exposure:	69 dBA
Increase:	0 dB
Impact?:	None

Distance to Impact Contours

Dist to Mod. Impact Contour (Source 1):	62 ft
Dist to Sev. Impact Contour (Source 1):	28 ft

Source 1 Results

Leq(day):	43.5 dBA
Leq(night):	40.1 dBA
Ldn:	47.2 dBA

Project: LAX Master Plan EIS
 Receiver: Receiver 8-Marritot Hotel

Source	Distance	Project Ldn	Existing Ldn	Noise Criteria		Impact?
				Mod. Impact	Sev. Impact	
1 Buses (diesel-powered)	391 ft	47.2 dBA	69 dBA	64 dBA	69 dBA	None
2 --	50 ft		69 dBA	64 dBA	69 dBA	
3 --	ft		69 dBA	64 dBA	69 dBA	
4 --	ft		69 dBA	64 dBA	69 dBA	
5 --	ft		69 dBA	64 dBA	69 dBA	
6 --	ft		69 dBA	64 dBA	69 dBA	
Combined Sources		47 dBA	69 dBA	64 dBA	69 dBA	None

Federal Transit Administration
 Noise Impact Assessment Spreadsheet
 Copyright 2007 HMMH Inc.
 version: 7/3/2007

Project:	LAX Master Plan EIS
-----------------	---------------------

Receiver Parameters	
Receiver:	Receiver 9 - Hilton Hotel
Land Use Category:	2. Residential
Existing Noise (Measured or Generic Value):	70 dBA

Noise Source Parameters	
Number of Noise Sources:	1

Noise Source Parameters		Source 1
	Source Type:	Highway/Transit
	Specific Source:	Buses (diesel-powered)
Daytime hrs	Speed (mph)	35
	Avg. Number of Events/hr	54
Nighttime hrs	Speed (mph)	40
	Avg. Number of Events/hr	20
Distance	Distance from Source to Receiver (ft)	21
	Number of Intervening Rows of Buildings	0
Adjustments	Noise Barrier?	No

Project Results Summary

Existing Ldn:	70 dBA
Total Project Ldn:	71 dBA
Total Noise Exposure:	73 dBA
Increase:	3 dB
Impact?:	Severe

Distance to Impact Contours

Dist to Mod. Impact Contour (Source 1):	56 ft
Dist to Sev. Impact Contour (Source 1):	25 ft

Source 1 Results

Leq(day):	67.1 dBA
Leq(night):	63.6 dBA
Ldn:	70.7 dBA

Project: LAX Master Plan EIS
 Receiver: Receiver 9 - Hilton Hotel

Source	Distance	Project Ldn	Existing Ldn	Noise Criteria		Impact?
				Mod. Impact	Sev. Impact	
1 Buses (diesel-powered)	21 ft	70.7 dBA	70 dBA	64 dBA	69 dBA	Severe Impact
2 --	50 ft		70 dBA	64 dBA	69 dBA	
3 --	ft		70 dBA	64 dBA	69 dBA	
4 --	ft		70 dBA	64 dBA	69 dBA	
5 --	ft		70 dBA	64 dBA	69 dBA	
6 --	ft		70 dBA	64 dBA	69 dBA	
Combined Sources		71 dBA	70 dBA	64 dBA	69 dBA	Severe Impact

Federal Transit Administration
 Noise Impact Assessment Spreadsheet
 Copyright 2007 HMMH Inc.
 version: 7/3/2007

Project:	LAX Master Plan EIS
-----------------	---------------------

Receiver Parameters	
Receiver:	Receiver 10-Westin Hotel
Land Use Category:	2. Residential
Existing Noise (Measured or Generic Value):	70 dBA

Noise Source Parameters	
Number of Noise Sources:	1

Noise Source Parameters		Source 1
	Source Type:	Highway/Transit
	Specific Source:	Buses (diesel-powered)
Daytime hrs	Speed (mph)	35
	Avg. Number of Events/hr	54
Nighttime hrs	Speed (mph)	40
	Avg. Number of Events/hr	20
Distance	Distance from Source to Receiver (ft)	1661
	Number of Intervening Rows of Buildings	1
Adjustments	Noise Barrier?	No

Project Results Summary

Existing Ldn:	70 dBA
Total Project Ldn:	38 dBA
Total Noise Exposure:	70 dBA
Increase:	0 dB
Impact?:	None

Distance to Impact Contours

Dist to Mod. Impact Contour (Source 1):	56 ft
Dist to Sev. Impact Contour (Source 1):	25 ft

Source 1 Results

Leq(day):	34.1 dBA
Leq(night):	30.6 dBA
Ldn:	37.7 dBA

Project: LAX Master Plan EIS
 Receiver: Receiver 10-Westin Hotel

Source	Distance	Project Ldn	Existing Ldn	Noise Criteria		Impact?
				Mod. Impact	Sev. Impact	
1 Buses (diesel-powered)	1661 ft	37.7 dBA	70 dBA	64 dBA	69 dBA	None
2 --	50 ft		70 dBA	64 dBA	69 dBA	
3 --	ft		70 dBA	64 dBA	69 dBA	
4 --	ft		70 dBA	64 dBA	69 dBA	
5 --	ft		70 dBA	64 dBA	69 dBA	
6 --	ft		70 dBA	64 dBA	69 dBA	
Combined Sources		38 dBA	70 dBA	64 dBA	69 dBA	None

Alternative 2

Federal Transit Administration
 Noise Impact Assessment Spreadsheet
 Copyright 2007 HMMH Inc.
 version: 7/3/2007

Project:	LAX Master Plan EIS
-----------------	---------------------

Receiver Parameters	
Receiver:	Receiver 1 - Radisson Hotel
Land Use Category:	2. Residential
Existing Noise (Measured or Generic Value):	68 dBA

Noise Source Parameters	
Number of Noise Sources:	1

Noise Source Parameters		Source 1
	Source Type:	Highway/Transit
	Specific Source:	Buses (diesel-powered)
Daytime hrs	Speed (mph)	35
	Avg. Number of Events/hr	54
Nighttime hrs	Speed (mph)	40
	Avg. Number of Events/hr	20
Distance	Distance from Source to Receiver (ft)	371
	Number of Intervening Rows of Buildings	1
Adjustments	Noise Barrier?	No

Project Results Summary

Existing Ldn:	68 dBA
Total Project Ldn:	48 dBA
Total Noise Exposure:	68 dBA
Increase:	0 dB
Impact?:	None

Distance to Impact Contours

Dist to Mod. Impact Contour (Source 1):	70 ft
Dist to Sev. Impact Contour (Source 1):	31 ft

Source 1 Results

Leq(day):	43.8 dBA
Leq(night):	40.4 dBA
Ldn:	47.5 dBA

Project: LAX Master Plan EIS
 Receiver: Receiver 1 - Radisson Hotel

Source	Distance	Project Ldn	Existing Ldn	Noise Criteria		Impact?
				Mod. Impact	Sev. Impact	
1 Buses (diesel-powered)	371 ft	47.5 dBA	68 dBA	63 dBA	68 dBA	None
2 --	50 ft		68 dBA	63 dBA	68 dBA	
3 --	ft		68 dBA	63 dBA	68 dBA	
4 --	ft		68 dBA	63 dBA	68 dBA	
5 --	ft		68 dBA	63 dBA	68 dBA	
6 --	ft		68 dBA	63 dBA	68 dBA	
Combined Sources		48 dBA	68 dBA	63 dBA	68 dBA	None

Federal Transit Administration
 Noise Impact Assessment Spreadsheet
 Copyright 2007 HMMH Inc.
 version: 7/3/2007

Project:	LAX Master Plan EIS
-----------------	---------------------

Receiver Parameters	
Receiver:	Receiver 2 - Courtyard by Marriott
Land Use Category:	2. Residential
Existing Noise (Measured or Generic Value):	67 dBA

Noise Source Parameters	
Number of Noise Sources:	1

Noise Source Parameters		Source 1
	Source Type:	Highway/Transit
	Specific Source:	Buses (diesel-powered)
Daytime hrs	Speed (mph)	35
	Avg. Number of Events/hr	54
Nighttime hrs	Speed (mph)	40
	Avg. Number of Events/hr	20
Distance	Distance from Source to Receiver (ft)	46
	Number of Intervening Rows of Buildings	0
Adjustments	Noise Barrier?	No

Project Results Summary

Existing Ldn:	67 dBA
Total Project Ldn:	66 dBA
Total Noise Exposure:	69 dBA
Increase:	2 dB
Impact?:	Moderate

Distance to Impact Contours

Dist to Mod. Impact Contour (Source 1):	78 ft
Dist to Sev. Impact Contour (Source 1):	35 ft

Source 1 Results

Leq(day):	61.9 dBA
Leq(night):	58.5 dBA
Ldn:	65.6 dBA

Project: LAX Master Plan EIS
 Receiver: Receiver 2 - Courtyard by Marriott

Source	Distance	Project Ldn	Existing Ldn	Noise Criteria		Impact?
				Mod. Impact	Sev. Impact	
1 Buses (diesel-powered)	46 ft	65.6 dBA	67 dBA	62 dBA	67 dBA	Moderate Impact
2 --	50 ft		67 dBA	62 dBA	67 dBA	
3 --	ft		67 dBA	62 dBA	67 dBA	
4 --	ft		67 dBA	62 dBA	67 dBA	
5 --	ft		67 dBA	62 dBA	67 dBA	
6 --	ft		67 dBA	62 dBA	67 dBA	
Combined Sources		66 dBA	67 dBA	62 dBA	67 dBA	Moderate Impact

Federal Transit Administration
 Noise Impact Assessment Spreadsheet
 Copyright 2007 HMMH Inc.
 version: 7/3/2007

Project:	LAX Master Plan EIS
-----------------	---------------------

Receiver Parameters	
Receiver:	Receiver 3 - Shearton Hotel
Land Use Category:	2. Residential
Existing Noise (Measured or Generic Value):	69 dBA

Noise Source Parameters	
Number of Noise Sources:	1

Noise Source Parameters		Source 1
	Source Type:	Highway/Transit
	Specific Source:	Buses (diesel-powered)
Daytime hrs	Speed (mph)	35
	Avg. Number of Events/hr	54
Nighttime hrs	Speed (mph)	40
	Avg. Number of Events/hr	20
Distance	Distance from Source to Receiver (ft)	138
	Number of Intervening Rows of Buildings	0
Adjustments	Noise Barrier?	No

Project Results Summary

Existing Ldn:	69 dBA
Total Project Ldn:	58 dBA
Total Noise Exposure:	69 dBA
Increase:	0 dB
Impact?:	None

Distance to Impact Contours

Dist to Mod. Impact Contour (Source 1):	62 ft
Dist to Sev. Impact Contour (Source 1):	28 ft

Source 1 Results

Leq(day):	54.8 dBA
Leq(night):	51.3 dBA
Ldn:	58.4 dBA

Project: LAX Master Plan EIS
Receiver: Receiver 3 - Shearton Hotel

Source	Distance	Project Ldn	Existing Ldn	Noise Criteria		Impact?
				Mod. Impact	Sev. Impact	
1 Buses (diesel-powered)	138 ft	58.4 dBA	69 dBA	64 dBA	69 dBA	None
2 --	50 ft		69 dBA	64 dBA	69 dBA	
3 --	ft		69 dBA	64 dBA	69 dBA	
4 --	ft		69 dBA	64 dBA	69 dBA	
5 --	ft		69 dBA	64 dBA	69 dBA	
6 --	ft		69 dBA	64 dBA	69 dBA	
Combined Sources		58 dBA	69 dBA	64 dBA	69 dBA	None

Federal Transit Administration
 Noise Impact Assessment Spreadsheet
 Copyright 2007 HMMH Inc.
 version: 7/3/2007

Project:	LAX Master Plan EIS
-----------------	---------------------

Receiver Parameters	
Receiver:	Receiver 4 - Crown Plaza Hotels
Land Use Category:	2. Residential
Existing Noise (Measured or Generic Value):	68 dBA

Noise Source Parameters	
Number of Noise Sources:	1

Noise Source Parameters		Source 1
	Source Type:	Highway/Transit
	Specific Source:	Buses (diesel-powered)
Daytime hrs	Speed (mph)	35
	Avg. Number of Events/hr	54
Nighttime hrs	Speed (mph)	40
	Avg. Number of Events/hr	20
Distance	Distance from Source to Receiver (ft)	435
	Number of Intervening Rows of Buildings	1
Adjustments	Noise Barrier?	No

Project Results Summary

Existing Ldn:	68 dBA
Total Project Ldn:	46 dBA
Total Noise Exposure:	68 dBA
Increase:	0 dB
Impact?:	None

Distance to Impact Contours

Dist to Mod. Impact Contour (Source 1):	70 ft
Dist to Sev. Impact Contour (Source 1):	31 ft

Source 1 Results

Leq(day):	42.8 dBA
Leq(night):	39.4 dBA
Ldn:	46.5 dBA

Project: LAX Master Plan EIS
 Receiver: Receiver 4 - Crown Plaza Hotels

Source	Distance	Project Ldn	Existing Ldn	Noise Criteria		Impact?
				Mod. Impact	Sev. Impact	
1 Buses (diesel-powered)	435 ft	46.5 dBA	68 dBA	63 dBA	68 dBA	None
2 --	50 ft		68 dBA	63 dBA	68 dBA	
3 --	ft		68 dBA	63 dBA	68 dBA	
4 --	ft		68 dBA	63 dBA	68 dBA	
5 --	ft		68 dBA	63 dBA	68 dBA	
6 --	ft		68 dBA	63 dBA	68 dBA	
Combined Sources		46 dBA	68 dBA	63 dBA	68 dBA	None

Federal Transit Administration
 Noise Impact Assessment Spreadsheet
 Copyright 2007 HMMH Inc.
 version: 7/3/2007

Project:	LAX Master Plan EIS
-----------------	----------------------------

Receiver Parameters	
Receiver:	Receiver 5 - Embassy Suites
Land Use Category:	2. Residential
Existing Noise (Measured or Generic Value):	68 dBA

Noise Source Parameters	
Number of Noise Sources:	1

Noise Source Parameters		Source 1
	Source Type:	Highway/Transit
	Specific Source:	Buses (diesel-powered)
Daytime hrs	Speed (mph)	35
	Avg. Number of Events/hr	54
Nighttime hrs	Speed (mph)	40
	Avg. Number of Events/hr	20
Distance	Distance from Source to Receiver (ft)	49
	Number of Intervening Rows of Buildings	0
Adjustments	Noise Barrier?	No

Project Results Summary

Existing Ldn:	68 dBA
Total Project Ldn:	65 dBA
Total Noise Exposure:	70 dBA
Increase:	2 dB
Impact?:	Moderate

Distance to Impact Contours

Dist to Mod. Impact Contour (Source 1):	70 ft
Dist to Sev. Impact Contour (Source 1):	31 ft

Source 1 Results

Leq(day):	61.5 dBA
Leq(night):	58.1 dBA
Ldn:	65.2 dBA

Project: LAX Master Plan EIS
Receiver: Receiver 5 - Embassy Suites

Source	Distance	Project Ldn	Existing Ldn	Noise Criteria		Impact?
				Mod. Impact	Sev. Impact	
1 Buses (diesel-powered)	49 ft	65.2 dBA	68 dBA	63 dBA	68 dBA	Moderate Impact
2 --	50 ft		68 dBA	63 dBA	68 dBA	
3 --	ft		68 dBA	63 dBA	68 dBA	
4 --	ft		68 dBA	63 dBA	68 dBA	
5 --	ft		68 dBA	63 dBA	68 dBA	
6 --	ft		68 dBA	63 dBA	68 dBA	
Combined Sources		65 dBA	68 dBA	63 dBA	68 dBA	Moderate Impact

Federal Transit Administration
 Noise Impact Assessment Spreadsheet
 Copyright 2007 HMMH Inc.
 version: 7/3/2007

Project:	LAX Master Plan EIS
-----------------	---------------------

Receiver Parameters	
Receiver:	Receiver 6 -Rebaussance Hotel
Land Use Category:	2. Residential
Existing Noise (Measured or Generic Value):	67 dBA

Noise Source Parameters	
Number of Noise Sources:	1

Noise Source Parameters		Source 1
	Source Type:	Highway/Transit
	Specific Source:	Buses (diesel-powered)
Daytime hrs	Speed (mph)	35
	Avg. Number of Events/hr	54
Nighttime hrs	Speed (mph)	40
	Avg. Number of Events/hr	20
Distance	Distance from Source to Receiver (ft)	60
	Number of Intervening Rows of Buildings	0
Adjustments	Noise Barrier?	No

Project Results Summary

Existing Ldn:	67 dBA
Total Project Ldn:	64 dBA
Total Noise Exposure:	69 dBA
Increase:	2 dB
Impact?:	Moderate

Distance to Impact Contours

Dist to Mod. Impact Contour (Source 1):	78 ft
Dist to Sev. Impact Contour (Source 1):	35 ft

Source 1 Results

Leq(day):	60.2 dBA
Leq(night):	56.8 dBA
Ldn:	63.9 dBA

Project: LAX Master Plan EIS
Receiver: Receiver 6 -Rebaussance Hotel

Source	Distance	Project Ldn	Existing Ldn	Noise Criteria		Impact?
				Mod. Impact	Sev. Impact	
1 Buses (diesel-powered)	60 ft	63.9 dBA	67 dBA	62 dBA	67 dBA	Moderate Impact
2 --	50 ft		67 dBA	62 dBA	67 dBA	
3 --	ft		67 dBA	62 dBA	67 dBA	
4 --	ft		67 dBA	62 dBA	67 dBA	
5 --	ft		67 dBA	62 dBA	67 dBA	
6 --	ft		67 dBA	62 dBA	67 dBA	
Combined Sources		64 dBA	67 dBA	62 dBA	67 dBA	Moderate Impact

Federal Transit Administration
 Noise Impact Assessment Spreadsheet
 Copyright 2007 HMMH Inc.
 version: 7/3/2007

Project:	LAX Master Plan EIS
-----------------	---------------------

Receiver Parameters	
Receiver:	Receiver 7 - Four Points Shearaton
Land Use Category:	2. Residential
Existing Noise (Measured or Generic Value):	67 dBA

Noise Source Parameters	
Number of Noise Sources:	1

Noise Source Parameters		Source 1
	Source Type:	Highway/Transit
	Specific Source:	Buses (diesel-powered)
Daytime hrs	Speed (mph)	35
	Avg. Number of Events/hr	54
Nighttime hrs	Speed (mph)	40
	Avg. Number of Events/hr	20
Distance	Distance from Source to Receiver (ft)	35
	Number of Intervening Rows of Buildings	0
Adjustments	Noise Barrier?	No

Project Results Summary

Existing Ldn:	67 dBA
Total Project Ldn:	67 dBA
Total Noise Exposure:	70 dBA
Increase:	3 dB
Impact?:	Moderate

Distance to Impact Contours

Dist to Mod. Impact Contour (Source 1):	78 ft
Dist to Sev. Impact Contour (Source 1):	35 ft

Source 1 Results

Leq(day):	63.7 dBA
Leq(night):	60.3 dBA
Ldn:	67.4 dBA

Project: LAX Master Plan EIS
Receiver: Receiver 7 - Four Points Shearaton

Source	Distance	Project Ldn	Existing Ldn	Noise Criteria		Impact?
				Mod. Impact	Sev. Impact	
1 Buses (diesel-powered)	35 ft	67.4 dBA	67 dBA	62 dBA	67 dBA	Moderate Impact
2 --	50 ft		67 dBA	62 dBA	67 dBA	
3 --	ft		67 dBA	62 dBA	67 dBA	
4 --	ft		67 dBA	62 dBA	67 dBA	
5 --	ft		67 dBA	62 dBA	67 dBA	
6 --	ft		67 dBA	62 dBA	67 dBA	
Combined Sources		67 dBA	67 dBA	62 dBA	67 dBA	Moderate Impact

Federal Transit Administration
 Noise Impact Assessment Spreadsheet
 Copyright 2007 HMMH Inc.
 version: 7/3/2007

Project:	LAX Master Plan EIS
-----------------	---------------------

Receiver Parameters	
Receiver:	Receiver 8-Marritot Hotel
Land Use Category:	2. Residential
Existing Noise (Measured or Generic Value):	69 dBA

Noise Source Parameters	
Number of Noise Sources:	1

Noise Source Parameters		Source 1
	Source Type:	Highway/Transit
	Specific Source:	Buses (diesel-powered)
Daytime hrs	Speed (mph)	35
	Avg. Number of Events/hr	54
Nighttime hrs	Speed (mph)	40
	Avg. Number of Events/hr	20
Distance	Distance from Source to Receiver (ft)	391
	Number of Intervening Rows of Buildings	1
Adjustments	Noise Barrier?	No

Project Results Summary

Existing Ldn:	69 dBA
Total Project Ldn:	47 dBA
Total Noise Exposure:	69 dBA
Increase:	0 dB
Impact?:	None

Distance to Impact Contours

Dist to Mod. Impact Contour (Source 1):	62 ft
Dist to Sev. Impact Contour (Source 1):	28 ft

Source 1 Results

Leq(day):	43.5 dBA
Leq(night):	40.1 dBA
Ldn:	47.2 dBA

Project: LAX Master Plan EIS
 Receiver: Receiver 8-Marritot Hotel

Source	Distance	Project Ldn	Existing Ldn	Noise Criteria		Impact?
				Mod. Impact	Sev. Impact	
1 Buses (diesel-powered)	391 ft	47.2 dBA	69 dBA	64 dBA	69 dBA	None
2 --	50 ft		69 dBA	64 dBA	69 dBA	
3 --	ft		69 dBA	64 dBA	69 dBA	
4 --	ft		69 dBA	64 dBA	69 dBA	
5 --	ft		69 dBA	64 dBA	69 dBA	
6 --	ft		69 dBA	64 dBA	69 dBA	
Combined Sources		47 dBA	69 dBA	64 dBA	69 dBA	None

Federal Transit Administration
 Noise Impact Assessment Spreadsheet
 Copyright 2007 HMMH Inc.
 version: 7/3/2007

Project:	LAX Master Plan EIS
-----------------	---------------------

Receiver Parameters	
Receiver:	Receiver 9 - Hilton Hotel
Land Use Category:	2. Residential
Existing Noise (Measured or Generic Value):	70 dBA

Noise Source Parameters	
Number of Noise Sources:	1

Noise Source Parameters		Source 1
	Source Type:	Highway/Transit
	Specific Source:	Buses (diesel-powered)
Daytime hrs	Speed (mph)	35
	Avg. Number of Events/hr	54
Nighttime hrs	Speed (mph)	40
	Avg. Number of Events/hr	20
Distance	Distance from Source to Receiver (ft)	21
	Number of Intervening Rows of Buildings	0
Adjustments	Noise Barrier?	No

Project Results Summary

Existing Ldn:	70 dBA
Total Project Ldn:	71 dBA
Total Noise Exposure:	73 dBA
Increase:	3 dB
Impact?:	Severe

Distance to Impact Contours

Dist to Mod. Impact Contour (Source 1):	56 ft
Dist to Sev. Impact Contour (Source 1):	25 ft

Source 1 Results

Leq(day):	67.1 dBA
Leq(night):	63.6 dBA
Ldn:	70.7 dBA

Project: LAX Master Plan EIS
Receiver: Receiver 9 - Hilton Hotel

Source	Distance	Project Ldn	Existing Ldn	Noise Criteria		Impact?
				Mod. Impact	Sev. Impact	
1 Buses (diesel-powered)	21 ft	70.7 dBA	70 dBA	64 dBA	69 dBA	Severe Impact
2 --	50 ft		70 dBA	64 dBA	69 dBA	
3 --	ft		70 dBA	64 dBA	69 dBA	
4 --	ft		70 dBA	64 dBA	69 dBA	
5 --	ft		70 dBA	64 dBA	69 dBA	
6 --	ft		70 dBA	64 dBA	69 dBA	
Combined Sources		71 dBA	70 dBA	64 dBA	69 dBA	Severe Impact

Federal Transit Administration
 Noise Impact Assessment Spreadsheet
 Copyright 2007 HMMH Inc.
 version: 7/3/2007

Project:	LAX Master Plan EIS
-----------------	---------------------

Receiver Parameters	
Receiver:	Receiver 10-Westin Hotel
Land Use Category:	2. Residential
Existing Noise (Measured or Generic Value):	70 dBA

Noise Source Parameters	
Number of Noise Sources:	1

Noise Source Parameters		Source 1
	Source Type:	Highway/Transit
	Specific Source:	Buses (diesel-powered)
Daytime hrs	Speed (mph)	35
	Avg. Number of Events/hr	54
Nighttime hrs	Speed (mph)	40
	Avg. Number of Events/hr	20
Distance	Distance from Source to Receiver (ft)	1661
	Number of Intervening Rows of Buildings	1
Adjustments	Noise Barrier?	No

Project Results Summary

Existing Ldn:	70 dBA
Total Project Ldn:	38 dBA
Total Noise Exposure:	70 dBA
Increase:	0 dB
Impact?:	None

Distance to Impact Contours

Dist to Mod. Impact Contour (Source 1):	56 ft
Dist to Sev. Impact Contour (Source 1):	25 ft

Source 1 Results

Leq(day):	34.1 dBA
Leq(night):	30.6 dBA
Ldn:	37.7 dBA

Project: LAX Master Plan EIS
Receiver: Receiver 10-Westin Hotel

Source	Distance	Project Ldn	Existing Ldn	Noise Criteria		Impact?
				Mod. Impact	Sev. Impact	
1 Buses (diesel-powered)	1661 ft	37.7 dBA	70 dBA	64 dBA	69 dBA	None
2 --	50 ft		70 dBA	64 dBA	69 dBA	
3 --	ft		70 dBA	64 dBA	69 dBA	
4 --	ft		70 dBA	64 dBA	69 dBA	
5 --	ft		70 dBA	64 dBA	69 dBA	
6 --	ft		70 dBA	64 dBA	69 dBA	
Combined Sources		38 dBA	70 dBA	64 dBA	69 dBA	None

Alternative 3 – APM Rubber Tire

Federal Transit Administration
 Noise Impact Assessment Spreadsheet
 Copyright 2007 HMMH Inc.
 version: 7/3/2007

Project:	LAX Master Plan EIS
-----------------	---------------------

Receiver Parameters	
Receiver:	Receiver 1 - Radisson Hotel
Land Use Category:	2. Residential
Existing Noise (Measured or Generic Value):	68 dBA

Noise Source Parameters	
Number of Noise Sources:	1

Noise Source Parameters		Source 1
	Source Type:	Fixed Guideway
	Specific Source:	Automated Guideway Transit /Rubber Tire
Daytime hrs	Avg. Number of vehicles/train	6
	Speed (mph)	45
	Avg. Number of Events/hr	59
Nighttime hrs	Avg. Number of vehicles/train	6
	Speed (mph)	45
	Avg. Number of Events/hr	31
Distance	Distance from Source to Receiver (ft)	371
	Number of Intervening Rows of Buildings	1
Adjustments	Noise Barrier?	No

Project Results Summary

Existing Ldn:	68 dBA
Total Project Ldn:	54 dBA
Total Noise Exposure:	68 dBA
Increase:	0 dB
Impact?:	None

Distance to Impact Contours

Dist to Mod. Impact Contour (Source 1):	177 ft
Dist to Sev. Impact Contour (Source 1):	79 ft

Source 1 Results

Leq(day):	49.4 dBA
Leq(night):	46.6 dBA
Ldn:	53.6 dBA

Project: LAX Master Plan EIS
 Receiver: Receiver 1 - Radisson Hotel

Source	Distance	Project Ldn	Existing Ldn	Noise Criteria		Impact?
				Mod. Impact	Sev. Impact	
1 Automated Guideway Trans	371 ft	53.6 dBA	68 dBA	63 dBA	68 dBA	None
2 --	50 ft		68 dBA	63 dBA	68 dBA	
3 --	ft		68 dBA	63 dBA	68 dBA	
4 --	ft		68 dBA	63 dBA	68 dBA	
5 --	ft		68 dBA	63 dBA	68 dBA	
6 --	ft		68 dBA	63 dBA	68 dBA	
Combined Sources		54 dBA	68 dBA	63 dBA	68 dBA	None

Federal Transit Administration
 Noise Impact Assessment Spreadsheet
 Copyright 2007 HMMH Inc.
 version: 7/3/2007

Project:	LAX Master Plan EIS
-----------------	---------------------

Receiver Parameters	
Receiver:	Receiver 2 - Courtyard by Marriott
Land Use Category:	2. Residential
Existing Noise (Measured or Generic Value):	67 dBA

Noise Source Parameters	
Number of Noise Sources:	1

Noise Source Parameters		Source 1
	Source Type:	Fixed Guideway
	Specific Source:	Automated Guideway Transit /Rubber Tire
Daytime hrs	Avg. Number of vehicles/train	6
	Speed (mph)	45
	Avg. Number of Events/hr	59
Nighttime hrs	Avg. Number of vehicles/train	6
	Speed (mph)	45
	Avg. Number of Events/hr	31
Distance	Distance from Source to Receiver (ft)	46
	Number of Intervening Rows of Buildings	0
Adjustments	Noise Barrier?	No

Project Results Summary

Existing Ldn:	67 dBA
Total Project Ldn:	72 dBA
Total Noise Exposure:	73 dBA
Increase:	6 dB
Impact?:	Severe

Distance to Impact Contours

Dist to Mod. Impact Contour (Source 1):	197 ft
Dist to Sev. Impact Contour (Source 1):	88 ft

Source 1 Results

Leq(day):	67.5 dBA
Leq(night):	64.7 dBA
Ldn:	71.7 dBA

Project: LAX Master Plan EIS
 Receiver: Receiver 2 - Courtyard by Marriott

Source	Distance	Project Ldn	Existing Ldn	Noise Criteria		Impact?
				Mod. Impact	Sev. Impact	
1 Automated Guideway Trans	46 ft	71.7 dBA	67 dBA	62 dBA	67 dBA	Severe Impact
2 --	50 ft		67 dBA	62 dBA	67 dBA	
3 --	ft		67 dBA	62 dBA	67 dBA	
4 --	ft		67 dBA	62 dBA	67 dBA	
5 --	ft		67 dBA	62 dBA	67 dBA	
6 --	ft		67 dBA	62 dBA	67 dBA	
Combined Sources		72 dBA	67 dBA	62 dBA	67 dBA	Severe Impact

Federal Transit Administration
 Noise Impact Assessment Spreadsheet
 Copyright 2007 HMMH Inc.
 version: 7/3/2007

Project:	LAX Master Plan EIS
-----------------	---------------------

Receiver Parameters	
Receiver:	Receiver 3 - Shearton Hotel
Land Use Category:	2. Residential
Existing Noise (Measured or Generic Value):	69 dBA

Noise Source Parameters	
Number of Noise Sources:	1

Noise Source Parameters		Source 1
	Source Type:	Fixed Guideway
	Specific Source:	Automated Guideway Transit /Rubber Tire
Daytime hrs	Avg. Number of vehicles/train	6
	Speed (mph)	45
	Avg. Number of Events/hr	59
Nighttime hrs	Avg. Number of vehicles/train	6
	Speed (mph)	45
	Avg. Number of Events/hr	31
Distance	Distance from Source to Receiver (ft)	138
	Number of Intervening Rows of Buildings	0
Adjustments	Noise Barrier?	No

Project Results Summary

Existing Ldn:	69 dBA
Total Project Ldn:	65 dBA
Total Noise Exposure:	70 dBA
Increase:	1 dB
Impact?:	Moderate

Distance to Impact Contours

Dist to Mod. Impact Contour (Source 1):	158 ft
Dist to Sev. Impact Contour (Source 1):	71 ft

Source 1 Results

Leq(day):	60.4 dBA
Leq(night):	57.6 dBA
Ldn:	64.5 dBA

Project: LAX Master Plan EIS
 Receiver: Receiver 3 - Shearton Hotel

Source	Distance	Project Ldn	Existing Ldn	Noise Criteria		Impact?
				Mod. Impact	Sev. Impact	
1 Automated Guideway Trans	138 ft	64.5 dBA	69 dBA	64 dBA	69 dBA	Moderate Impact
2 --	50 ft		69 dBA	64 dBA	69 dBA	
3 --	ft		69 dBA	64 dBA	69 dBA	
4 --	ft		69 dBA	64 dBA	69 dBA	
5 --	ft		69 dBA	64 dBA	69 dBA	
6 --	ft		69 dBA	64 dBA	69 dBA	
Combined Sources		65 dBA	69 dBA	64 dBA	69 dBA	Moderate Impact

Federal Transit Administration
 Noise Impact Assessment Spreadsheet
 Copyright 2007 HMMH Inc.
 version: 7/3/2007

Project:	LAX Master Plan EIS
-----------------	---------------------

Receiver Parameters	
Receiver:	Receiver 4 - Crown Plaza Hotels
Land Use Category:	2. Residential
Existing Noise (Measured or Generic Value):	68 dBA

Noise Source Parameters	
Number of Noise Sources:	1

Noise Source Parameters		Source 1
	Source Type:	Fixed Guideway
	Specific Source:	Automated Guideway Transit /Rubber Tire
Daytime hrs	Avg. Number of vehicles/train	6
	Speed (mph)	45
	Avg. Number of Events/hr	59
Nighttime hrs	Avg. Number of vehicles/train	6
	Speed (mph)	45
	Avg. Number of Events/hr	31
Distance	Distance from Source to Receiver (ft)	435
	Number of Intervening Rows of Buildings	1
Adjustments	Noise Barrier?	No

Project Results Summary

Existing Ldn:	68 dBA
Total Project Ldn:	53 dBA
Total Noise Exposure:	68 dBA
Increase:	0 dB
Impact?:	None

Distance to Impact Contours

Dist to Mod. Impact Contour (Source 1):	177 ft
Dist to Sev. Impact Contour (Source 1):	79 ft

Source 1 Results

Leq(day):	48.4 dBA
Leq(night):	45.6 dBA
Ldn:	52.5 dBA

Project: LAX Master Plan EIS
 Receiver: Receiver 4 - Crown Plaza Hotels

Source	Distance	Project Ldn	Existing Ldn	Noise Criteria		Impact?
				Mod. Impact	Sev. Impact	
1 Automated Guideway Trans	435 ft	54.8 dBA	68 dBA	63 dBA	68 dBA	None
2 --	50 ft		68 dBA	63 dBA	68 dBA	
3 --	ft		68 dBA	63 dBA	68 dBA	
4 --	ft		68 dBA	63 dBA	68 dBA	
5 --	ft		68 dBA	63 dBA	68 dBA	
6 --	ft		68 dBA	63 dBA	68 dBA	
Combined Sources		55 dBA	68 dBA	63 dBA	68 dBA	None

Federal Transit Administration
 Noise Impact Assessment Spreadsheet
 Copyright 2007 HMMH Inc.
 version: 7/3/2007

Project:	LAX Master Plan EIS
-----------------	---------------------

Receiver Parameters	
Receiver:	Receiver 5 - Embassy Suites
Land Use Category:	2. Residential
Existing Noise (Measured or Generic Value):	68 dBA

Noise Source Parameters	
Number of Noise Sources:	1

Noise Source Parameters		Source 1
	Source Type:	Fixed Guideway
	Specific Source:	Automated Guideway Transit /Rubber Tire
Daytime hrs	Avg. Number of vehicles/train	6
	Speed (mph)	45
	Avg. Number of Events/hr	59
Nighttime hrs	Avg. Number of vehicles/train	6
	Speed (mph)	45
	Avg. Number of Events/hr	31
Distance	Distance from Source to Receiver (ft)	49
	Number of Intervening Rows of Buildings	0
Adjustments	Noise Barrier?	No

Project Results Summary

Existing Ldn:	68 dBA
Total Project Ldn:	71 dBA
Total Noise Exposure:	73 dBA
Increase:	5 dB
Impact?:	Severe

Distance to Impact Contours

Dist to Mod. Impact Contour (Source 1):	177 ft
Dist to Sev. Impact Contour (Source 1):	79 ft

Source 1 Results

Leq(day):	67.1 dBA
Leq(night):	64.3 dBA
Ldn:	71.3 dBA

Project: LAX Master Plan EIS
 Receiver: Receiver 5 - Embassy Suites

Source	Distance	Project Ldn	Existing Ldn	Noise Criteria		Impact?
				Mod. Impact	Sev. Impact	
1 Automated Guideway Trans	49 ft	71.3 dBA	68 dBA	63 dBA	68 dBA	Severe Impact
2 --	50 ft		68 dBA	63 dBA	68 dBA	
3 --	ft		68 dBA	63 dBA	68 dBA	
4 --	ft		68 dBA	63 dBA	68 dBA	
5 --	ft		68 dBA	63 dBA	68 dBA	
6 --	ft		68 dBA	63 dBA	68 dBA	
Combined Sources		71 dBA	68 dBA	63 dBA	68 dBA	Severe Impact

Federal Transit Administration
 Noise Impact Assessment Spreadsheet
 Copyright 2007 HMMH Inc.
 version: 7/3/2007

Project:	LAX Master Plan EIS
-----------------	---------------------

Receiver Parameters	
Receiver:	Receiver 6 -Rebaussance Hotel
Land Use Category:	2. Residential
Existing Noise (Measured or Generic Value):	67 dBA

Noise Source Parameters	
Number of Noise Sources:	1

Noise Source Parameters		Source 1
	Source Type:	Fixed Guideway
	Specific Source:	Automated Guideway Transit /Rubber Tire
Daytime hrs	Avg. Number of vehicles/train	6
	Speed (mph)	45
	Avg. Number of Events/hr	59
Nighttime hrs	Avg. Number of vehicles/train	6
	Speed (mph)	45
	Avg. Number of Events/hr	31
Distance	Distance from Source to Receiver (ft)	60
	Number of Intervening Rows of Buildings	0
Adjustments	Noise Barrier?	No

Project Results Summary

Existing Ldn:	67 dBA
Total Project Ldn:	70 dBA
Total Noise Exposure:	72 dBA
Increase:	5 dB
Impact?:	Severe

Distance to Impact Contours

Dist to Mod. Impact Contour (Source 1):	197 ft
Dist to Sev. Impact Contour (Source 1):	88 ft

Source 1 Results

Leq(day):	65.8 dBA
Leq(night):	63.0 dBA
Ldn:	69.9 dBA

Project: LAX Master Plan EIS
 Receiver: Receiver 6 -Rebaussance Hotel

Source	Distance	Project Ldn	Existing Ldn	Noise Criteria		Impact?
				Mod. Impact	Sev. Impact	
1 Automated Guideway Trans	60 ft	69.9 dBA	67 dBA	62 dBA	67 dBA	Severe Impact
2 --	50 ft		67 dBA	62 dBA	67 dBA	
3 --	ft		67 dBA	62 dBA	67 dBA	
4 --	ft		67 dBA	62 dBA	67 dBA	
5 --	ft		67 dBA	62 dBA	67 dBA	
6 --	ft		67 dBA	62 dBA	67 dBA	
Combined Sources		70 dBA	67 dBA	62 dBA	67 dBA	Severe Impact

Federal Transit Administration
 Noise Impact Assessment Spreadsheet
 Copyright 2007 HMMH Inc.
 version: 7/3/2007

Project:	LAX Master Plan EIS
-----------------	---------------------

Receiver Parameters	
Receiver:	Receiver 7 - Four Points Shearaton
Land Use Category:	2. Residential
Existing Noise (Measured or Generic Value):	67 dBA

Noise Source Parameters	
Number of Noise Sources:	1

Noise Source Parameters		Source 1
	Source Type:	Fixed Guideway
	Specific Source:	Automated Guideway Transit /Rubber Tire
Daytime hrs	Avg. Number of vehicles/train	6
	Speed (mph)	45
	Avg. Number of Events/hr	59
Nighttime hrs	Avg. Number of vehicles/train	6
	Speed (mph)	45
	Avg. Number of Events/hr	31
Distance	Distance from Source to Receiver (ft)	35
	Number of Intervening Rows of Buildings	0
Adjustments	Noise Barrier?	No

Project Results Summary

Existing Ldn:	67 dBA
Total Project Ldn:	73 dBA
Total Noise Exposure:	74 dBA
Increase:	7 dB
Impact?:	Severe

Distance to Impact Contours

Dist to Mod. Impact Contour (Source 1):	197 ft
Dist to Sev. Impact Contour (Source 1):	88 ft

Source 1 Results

Leq(day):	69.3 dBA
Leq(night):	66.5 dBA
Ldn:	73.4 dBA

Project: LAX Master Plan EIS
 Receiver: Receiver 7 - Four Points Shearaton

Source	Distance	Project Ldn	Existing Ldn	Noise Criteria		Impact?
				Mod. Impact	Sev. Impact	
1 Automated Guideway Trans	35 ft	73.4 dBA	67 dBA	62 dBA	67 dBA	Severe Impact
2 --	50 ft		67 dBA	62 dBA	67 dBA	
3 --	ft		67 dBA	62 dBA	67 dBA	
4 --	ft		67 dBA	62 dBA	67 dBA	
5 --	ft		67 dBA	62 dBA	67 dBA	
6 --	ft		67 dBA	62 dBA	67 dBA	
Combined Sources		73 dBA	67 dBA	62 dBA	67 dBA	Severe Impact

Federal Transit Administration
 Noise Impact Assessment Spreadsheet
 Copyright 2007 HMMH Inc.
 version: 7/3/2007

Project:	LAX Master Plan EIS
-----------------	---------------------

Receiver Parameters	
Receiver:	Receiver 8-Marritot Hotel
Land Use Category:	2. Residential
Existing Noise (Measured or Generic Value):	69 dBA

Noise Source Parameters	
Number of Noise Sources:	1

Noise Source Parameters		Source 1
	Source Type:	Fixed Guideway
	Specific Source:	Automated Guideway Transit /Rubber Tire
Daytime hrs	Avg. Number of vehicles/train	6
	Speed (mph)	45
	Avg. Number of Events/hr	59
Nighttime hrs	Avg. Number of vehicles/train	6
	Speed (mph)	45
	Avg. Number of Events/hr	31
Distance	Distance from Source to Receiver (ft)	391
	Number of Intervening Rows of Buildings	1
Adjustments	Noise Barrier?	No

Project Results Summary

Existing Ldn:	69 dBA
Total Project Ldn:	53 dBA
Total Noise Exposure:	69 dBA
Increase:	0 dB
Impact?:	None

Distance to Impact Contours

Dist to Mod. Impact Contour (Source 1):	158 ft
Dist to Sev. Impact Contour (Source 1):	71 ft

Source 1 Results

Leq(day):	49.1 dBA
Leq(night):	46.3 dBA
Ldn:	53.2 dBA

Project: LAX Master Plan EIS
Receiver: Receiver 8-Marritot Hotel

Source	Distance	Project Ldn	Existing Ldn	Noise Criteria		Impact?
				Mod. Impact	Sev. Impact	
1 Automated Guideway Trans	391 ft	53.2 dBA	69 dBA	64 dBA	69 dBA	None
2 --	50 ft		69 dBA	64 dBA	69 dBA	
3 --	ft		69 dBA	64 dBA	69 dBA	
4 --	ft		69 dBA	64 dBA	69 dBA	
5 --	ft		69 dBA	64 dBA	69 dBA	
6 --	ft		69 dBA	64 dBA	69 dBA	
Combined Sources		53 dBA	69 dBA	64 dBA	69 dBA	None

Federal Transit Administration
 Noise Impact Assessment Spreadsheet
 Copyright 2007 HMMH Inc.
 version: 7/3/2007

Project:	LAX Master Plan EIS
-----------------	---------------------

Receiver Parameters	
Receiver:	Receiver 9 - Hilton Hotel
Land Use Category:	2. Residential
Existing Noise (Measured or Generic Value):	70 dBA

Noise Source Parameters	
Number of Noise Sources:	1

Noise Source Parameters		Source 1
	Source Type:	Fixed Guideway
	Specific Source:	Automated Guideway Transit /Rubber Tire
Daytime hrs	Avg. Number of vehicles/train	6
	Speed (mph)	45
	Avg. Number of Events/hr	59
Nighttime hrs	Avg. Number of vehicles/train	6
	Speed (mph)	45
	Avg. Number of Events/hr	31
Distance	Distance from Source to Receiver (ft)	21
	Number of Intervening Rows of Buildings	0
Adjustments	Noise Barrier?	No

Project Results Summary

Existing Ldn:	70 dBA
Total Project Ldn:	77 dBA
Total Noise Exposure:	78 dBA
Increase:	8 dB
Impact?:	Severe

Distance to Impact Contours

Dist to Mod. Impact Contour (Source 1):	141 ft
Dist to Sev. Impact Contour (Source 1):	64 ft

Source 1 Results

Leq(day):	72.6 dBA
Leq(night):	69.8 dBA
Ldn:	76.8 dBA

Project: LAX Master Plan EIS
 Receiver: Receiver 9 - Hilton Hotel

Source	Distance	Project Ldn	Existing Ldn	Noise Criteria		Impact?
				Mod. Impact	Sev. Impact	
1 Automated Guideway Trans	21 ft	76.8 dBA	70 dBA	64 dBA	69 dBA	Severe Impact
2 --	50 ft		70 dBA	64 dBA	69 dBA	
3 --	ft		70 dBA	64 dBA	69 dBA	
4 --	ft		70 dBA	64 dBA	69 dBA	
5 --	ft		70 dBA	64 dBA	69 dBA	
6 --	ft		70 dBA	64 dBA	69 dBA	
Combined Sources		77 dBA	70 dBA	64 dBA	69 dBA	Severe Impact

Federal Transit Administration
 Noise Impact Assessment Spreadsheet
 Copyright 2007 HMMH Inc.
 version: 7/3/2007

Project:	LAX Master Plan EIS
-----------------	---------------------

Receiver Parameters	
Receiver:	Receiver 10-Westin Hotel
Land Use Category:	2. Residential
Existing Noise (Measured or Generic Value):	70 dBA

Noise Source Parameters	
Number of Noise Sources:	1

Noise Source Parameters		Source 1
	Source Type:	Fixed Guideway
	Specific Source:	Automated Guideway Transit /Rubber Tire
Daytime hrs	Avg. Number of vehicles/train	6
	Speed (mph)	45
	Avg. Number of Events/hr	59
Nighttime hrs	Avg. Number of vehicles/train	6
	Speed (mph)	45
	Avg. Number of Events/hr	31
Distance	Distance from Source to Receiver (ft)	1661
	Number of Intervening Rows of Buildings	1
Adjustments	Noise Barrier?	No

Project Results Summary

Existing Ldn:	70 dBA
Total Project Ldn:	44 dBA
Total Noise Exposure:	70 dBA
Increase:	0 dB
Impact?:	None

Distance to Impact Contours

Dist to Mod. Impact Contour (Source 1):	141 ft
Dist to Sev. Impact Contour (Source 1):	64 ft

Source 1 Results

Leq(day):	39.7 dBA
Leq(night):	36.9 dBA
Ldn:	43.8 dBA

Project: LAX Master Plan EIS
Receiver: Receiver 10-Westin Hotel

Source	Distance	Project Ldn	Existing Ldn	Noise Criteria		Impact?
				Mod. Impact	Sev. Impact	
1 Automated Guideway Trans	1661 ft	43.8 dBA	70 dBA	64 dBA	69 dBA	None
2 --	50 ft		70 dBA	64 dBA	69 dBA	
3 --	ft		70 dBA	64 dBA	69 dBA	
4 --	ft		70 dBA	64 dBA	69 dBA	
5 --	ft		70 dBA	64 dBA	69 dBA	
6 --	ft		70 dBA	64 dBA	69 dBA	
Combined Sources		44 dBA	70 dBA	64 dBA	69 dBA	None

Alternative 3 – APM Steel Wheel

Federal Transit Administration
 Noise Impact Assessment Spreadsheet
 Copyright 2007 HMMH Inc.
 version: 7/3/2007

Project:	LAX Master Plan EIS
-----------------	----------------------------

Receiver Parameters	
Receiver:	Receiver 1 - Radisson Hotel
Land Use Category:	2. Residential
Existing Noise (Measured or Generic Value):	68 dBA

Noise Source Parameters	
Number of Noise Sources:	1

Noise Source Parameters		Source 1
	Source Type:	Fixed Guideway
	Specific Source:	Automated Guideway Transit /Steel Wheel
Daytime hrs	Avg. Number of vehicles/train	4
	Speed (mph)	55
	Avg. Number of Events/hr	59
Nighttime hrs	Avg. Number of vehicles/train	4
	Speed (mph)	55
	Avg. Number of Events/hr	31
Distance	Distance from Source to Receiver (ft)	371
	Number of Intervening Rows of Buildings	1
Adjustments	Noise Barrier?	No

Project Results Summary

Existing Ldn:	68 dBA
Total Project Ldn:	54 dBA
Total Noise Exposure:	68 dBA
Increase:	0 dB
Impact?:	None

Distance to Impact Contours

Dist to Mod. Impact Contour (Source 1):	176 ft
Dist to Sev. Impact Contour (Source 1):	79 ft

Source 1 Results

Leq(day):	49.4 dBA
Leq(night):	46.6 dBA
Ldn:	53.5 dBA

Project: LAX Master Plan EIS
Receiver: Receiver 1 - Radisson Hotel

Source	Distance	Project Ldn	Existing Ldn	Noise Criteria		Impact?
				Mod. Impact	Sev. Impact	
1 Automated Guideway Trans	371 ft	53.5 dBA	68 dBA	63 dBA	68 dBA	None
2 --	50 ft		68 dBA	63 dBA	68 dBA	
3 --	ft		68 dBA	63 dBA	68 dBA	
4 --	ft		68 dBA	63 dBA	68 dBA	
5 --	ft		68 dBA	63 dBA	68 dBA	
6 --	ft		68 dBA	63 dBA	68 dBA	
Combined Sources		54 dBA	68 dBA	63 dBA	68 dBA	None

Federal Transit Administration
 Noise Impact Assessment Spreadsheet
 Copyright 2007 HMMH Inc.
 version: 7/3/2007

Project:	LAX Master Plan EIS
-----------------	---------------------

Receiver Parameters	
Receiver:	Receiver 2 - Courtyard by Marriott
Land Use Category:	2. Residential
Existing Noise (Measured or Generic Value):	67 dBA

Noise Source Parameters	
Number of Noise Sources:	1

Noise Source Parameters		Source 1
	Source Type:	Fixed Guideway
	Specific Source:	Automated Guideway Transit /Steel Wheel
Daytime hrs	Avg. Number of vehicles/train	4
	Speed (mph)	55
	Avg. Number of Events/hr	59
Nighttime hrs	Avg. Number of vehicles/train	4
	Speed (mph)	55
	Avg. Number of Events/hr	31
Distance	Distance from Source to Receiver (ft)	46
	Number of Intervening Rows of Buildings	0
Adjustments	Noise Barrier?	No

Project Results Summary

Existing Ldn:	67 dBA
Total Project Ldn:	72 dBA
Total Noise Exposure:	73 dBA
Increase:	6 dB
Impact?:	Severe

Distance to Impact Contours

Dist to Mod. Impact Contour (Source 1):	197 ft
Dist to Sev. Impact Contour (Source 1):	87 ft

Source 1 Results

Leq(day):	67.5 dBA
Leq(night):	64.7 dBA
Ldn:	71.6 dBA

Project: LAX Master Plan EIS
Receiver: Receiver 2 - Courtyard by Marriott

Source	Distance	Project Ldn	Existing Ldn	Noise Criteria		Impact?
				Mod. Impact	Sev. Impact	
1 Automated Guideway Trans	46 ft	71.6 dBA	67 dBA	62 dBA	67 dBA	Severe Impact
2 --	50 ft		67 dBA	62 dBA	67 dBA	
3 --	ft		67 dBA	62 dBA	67 dBA	
4 --	ft		67 dBA	62 dBA	67 dBA	
5 --	ft		67 dBA	62 dBA	67 dBA	
6 --	ft		67 dBA	62 dBA	67 dBA	
Combined Sources		72 dBA	67 dBA	62 dBA	67 dBA	Severe Impact

Federal Transit Administration
 Noise Impact Assessment Spreadsheet
 Copyright 2007 HMMH Inc.
 version: 7/3/2007

Project:	LAX Master Plan EIS
-----------------	---------------------

Receiver Parameters	
Receiver:	Receiver 3 - Shearton Hotel
Land Use Category:	2. Residential
Existing Noise (Measured or Generic Value):	69 dBA

Noise Source Parameters	
Number of Noise Sources:	1

Noise Source Parameters		Source 1
	Source Type:	Fixed Guideway
	Specific Source:	Automated Guideway Transit /Steel Wheel
Daytime hrs	Avg. Number of vehicles/train	4
	Speed (mph)	55
	Avg. Number of Events/hr	59
Nighttime hrs	Avg. Number of vehicles/train	4
	Speed (mph)	55
	Avg. Number of Events/hr	31
Distance	Distance from Source to Receiver (ft)	138
	Number of Intervening Rows of Buildings	0
Adjustments	Noise Barrier?	No

Project Results Summary

Existing Ldn:	69 dBA
Total Project Ldn:	64 dBA
Total Noise Exposure:	70 dBA
Increase:	1 dB
Impact?:	Moderate

Distance to Impact Contours

Dist to Mod. Impact Contour (Source 1):	158 ft
Dist to Sev. Impact Contour (Source 1):	71 ft

Source 1 Results

Leq(day):	60.3 dBA
Leq(night):	57.5 dBA
Ldn:	64.5 dBA

Project: LAX Master Plan EIS
Receiver: Receiver 3 - Shearson Hotel

Source	Distance	Project Ldn	Existing Ldn	Noise Criteria		Impact?
				Mod. Impact	Sev. Impact	
1 Automated Guideway Trans	138 ft	64.5 dBA	69 dBA	64 dBA	69 dBA	Moderate Impact
2 --	50 ft		69 dBA	64 dBA	69 dBA	
3 --	ft		69 dBA	64 dBA	69 dBA	
4 --	ft		69 dBA	64 dBA	69 dBA	
5 --	ft		69 dBA	64 dBA	69 dBA	
6 --	ft		69 dBA	64 dBA	69 dBA	
Combined Sources		64 dBA	69 dBA	64 dBA	69 dBA	Moderate Impact

Federal Transit Administration
 Noise Impact Assessment Spreadsheet
 Copyright 2007 HMMH Inc.
 version: 7/3/2007

Project:	LAX Master Plan EIS
-----------------	---------------------

Receiver Parameters	
Receiver:	Receiver 4 - Crown Plaza Hotels
Land Use Category:	2. Residential
Existing Noise (Measured or Generic Value):	68 dBA

Noise Source Parameters	
Number of Noise Sources:	1

Noise Source Parameters		Source 1
	Source Type:	Fixed Guideway
	Specific Source:	Automated Guideway Transit /Steel Wheel
Daytime hrs	Avg. Number of vehicles/train	4
	Speed (mph)	55
	Avg. Number of Events/hr	59
Nighttime hrs	Avg. Number of vehicles/train	4
	Speed (mph)	55
	Avg. Number of Events/hr	31
Distance	Distance from Source to Receiver (ft)	435
	Number of Intervening Rows of Buildings	1
Adjustments	Noise Barrier?	No

Project Results Summary

Existing Ldn:	68 dBA
Total Project Ldn:	53 dBA
Total Noise Exposure:	68 dBA
Increase:	0 dB
Impact?:	None

Distance to Impact Contours

Dist to Mod. Impact Contour (Source 1):	176 ft
Dist to Sev. Impact Contour (Source 1):	79 ft

Source 1 Results

Leq(day):	48.4 dBA
Leq(night):	45.6 dBA
Ldn:	52.5 dBA

Project: LAX Master Plan EIS
 Receiver: Receiver 4 - Crown Plaza Hotels

Source	Distance	Project Ldn	Existing Ldn	Noise Criteria		Impact?
				Mod. Impact	Sev. Impact	
1 Automated Guideway Trans	435 ft	54.8 dBA	68 dBA	63 dBA	68 dBA	None
2 --	50 ft		68 dBA	63 dBA	68 dBA	
3 --	ft		68 dBA	63 dBA	68 dBA	
4 --	ft		68 dBA	63 dBA	68 dBA	
5 --	ft		68 dBA	63 dBA	68 dBA	
6 --	ft		68 dBA	63 dBA	68 dBA	
Combined Sources		55 dBA	68 dBA	63 dBA	68 dBA	None

Federal Transit Administration
 Noise Impact Assessment Spreadsheet
 Copyright 2007 HMMH Inc.
 version: 7/3/2007

Project:	LAX Master Plan EIS
-----------------	---------------------

Receiver Parameters	
Receiver:	Receiver 5 - Embassy Suites
Land Use Category:	2. Residential
Existing Noise (Measured or Generic Value):	68 dBA

Noise Source Parameters	
Number of Noise Sources:	1

Noise Source Parameters		Source 1
	Source Type:	Fixed Guideway
	Specific Source:	Automated Guideway Transit /Steel Wheel
Daytime hrs	Avg. Number of vehicles/train	4
	Speed (mph)	55
	Avg. Number of Events/hr	59
Nighttime hrs	Avg. Number of vehicles/train	4
	Speed (mph)	55
	Avg. Number of Events/hr	31
Distance	Distance from Source to Receiver (ft)	49
	Number of Intervening Rows of Buildings	0
Adjustments	Noise Barrier?	No

Project Results Summary

Existing Ldn:	68 dBA
Total Project Ldn:	71 dBA
Total Noise Exposure:	73 dBA
Increase:	5 dB
Impact?:	Severe

Distance to Impact Contours

Dist to Mod. Impact Contour (Source 1):	176 ft
Dist to Sev. Impact Contour (Source 1):	79 ft

Source 1 Results

Leq(day):	67.1 dBA
Leq(night):	64.3 dBA
Ldn:	71.2 dBA

Project: LAX Master Plan EIS
Receiver: Receiver 5 - Embassy Suites

Source	Distance	Project Ldn	Existing Ldn	Noise Criteria		Impact?
				Mod. Impact	Sev. Impact	
1 Automated Guideway Transi	49 ft	71.2 dBA	68 dBA	63 dBA	68 dBA	Severe Impact
2 --	50 ft		68 dBA	63 dBA	68 dBA	
3 --	ft		68 dBA	63 dBA	68 dBA	
4 --	ft		68 dBA	63 dBA	68 dBA	
5 --	ft		68 dBA	63 dBA	68 dBA	
6 --	ft		68 dBA	63 dBA	68 dBA	
Combined Sources		71 dBA	68 dBA	63 dBA	68 dBA	Severe Impact

Federal Transit Administration
 Noise Impact Assessment Spreadsheet
 Copyright 2007 HMMH Inc.
 version: 7/3/2007

Project:	LAX Master Plan EIS
-----------------	----------------------------

Receiver Parameters	
Receiver:	Receptor 6 - Renaissance Hotel
Land Use Category:	2. Residential
Existing Noise (Measured or Generic Value):	67 dBA

Noise Source Parameters	
Number of Noise Sources:	1

Noise Source Parameters		Source 1
	Source Type:	Fixed Guideway
	Specific Source:	Automated Guideway Transit /Steel Wheel
Daytime hrs	Avg. Number of vehicles/train	4
	Speed (mph)	55
	Avg. Number of Events/hr	59
Nighttime hrs	Avg. Number of vehicles/train	4
	Speed (mph)	55
	Avg. Number of Events/hr	31
Distance	Distance from Source to Receiver (ft)	60
	Number of Intervening Rows of Buildings	0
Adjustments	Noise Barrier?	No

Project Results Summary

Existing Ldn:	67 dBA
Total Project Ldn:	70 dBA
Total Noise Exposure:	72 dBA
Increase:	5 dB
Impact?:	Severe

Distance to Impact Contours

Dist to Mod. Impact Contour (Source 1):	197 ft
Dist to Sev. Impact Contour (Source 1):	87 ft

Source 1 Results

Leq(day):	65.8 dBA
Leq(night):	63.0 dBA
Ldn:	69.9 dBA

Project: LAX Master Plan EIS
Receiver: Receiver 6 -Rebaussance Hotel

Source	Distance	Project Ldn	Existing Ldn	Noise Criteria		Impact?
				Mod. Impact	Sev. Impact	
1 Automated Guideway Trans	60 ft	69.9 dBA	67 dBA	62 dBA	67 dBA	Severe Impact
2 --	50 ft		67 dBA	62 dBA	67 dBA	
3 --	ft		67 dBA	62 dBA	67 dBA	
4 --	ft		67 dBA	62 dBA	67 dBA	
5 --	ft		67 dBA	62 dBA	67 dBA	
6 --	ft		67 dBA	62 dBA	67 dBA	
Combined Sources		70 dBA	67 dBA	62 dBA	67 dBA	Severe Impact

Federal Transit Administration
 Noise Impact Assessment Spreadsheet
 Copyright 2007 HMMH Inc.
 version: 7/3/2007

Project:	LAX Master Plan EIS
-----------------	---------------------

Receiver Parameters	
Receiver:	Receiver 7 - Four Points Shearaton
Land Use Category:	2. Residential
Existing Noise (Measured or Generic Value):	67 dBA

Noise Source Parameters	
Number of Noise Sources:	1

Noise Source Parameters		Source 1
	Source Type:	Fixed Guideway
	Specific Source:	Automated Guideway Transit /Steel Wheel
Daytime hrs	Avg. Number of vehicles/train	4
	Speed (mph)	55
	Avg. Number of Events/hr	59
Nighttime hrs	Avg. Number of vehicles/train	4
	Speed (mph)	55
	Avg. Number of Events/hr	31
Distance	Distance from Source to Receiver (ft)	35
	Number of Intervening Rows of Buildings	0
Adjustments	Noise Barrier?	No

Project Results Summary

Existing Ldn:	67 dBA
Total Project Ldn:	73 dBA
Total Noise Exposure:	74 dBA
Increase:	7 dB
Impact?:	Severe

Distance to Impact Contours

Dist to Mod. Impact Contour (Source 1):	197 ft
Dist to Sev. Impact Contour (Source 1):	87 ft

Source 1 Results

Leq(day):	69.3 dBA
Leq(night):	66.5 dBA
Ldn:	73.4 dBA

Project: LAX Master Plan EIS
 Receiver: Receiver 7 - Four Points Shearaton

Source	Distance	Project Ldn	Existing Ldn	Noise Criteria		Impact?
				Mod. Impact	Sev. Impact	
1 Automated Guideway Trans	35 ft	73.4 dBA	67 dBA	62 dBA	67 dBA	Severe Impact
2 --	50 ft		67 dBA	62 dBA	67 dBA	
3 --	ft		67 dBA	62 dBA	67 dBA	
4 --	ft		67 dBA	62 dBA	67 dBA	
5 --	ft		67 dBA	62 dBA	67 dBA	
6 --	ft		67 dBA	62 dBA	67 dBA	
Combined Sources		73 dBA	67 dBA	62 dBA	67 dBA	Severe Impact

Federal Transit Administration
 Noise Impact Assessment Spreadsheet
 Copyright 2007 HMMH Inc.
 version: 7/3/2007

Project:	LAX Master Plan EIS
-----------------	---------------------

Receiver Parameters	
Receiver:	Receiver 8-Marritot Hotel
Land Use Category:	2. Residential
Existing Noise (Measured or Generic Value):	69 dBA

Noise Source Parameters	
Number of Noise Sources:	1

Noise Source Parameters		Source 1
	Source Type:	Fixed Guideway
	Specific Source:	Automated Guideway Transit /Steel Wheel
Daytime hrs	Avg. Number of vehicles/train	4
	Speed (mph)	55
	Avg. Number of Events/hr	59
Nighttime hrs	Avg. Number of vehicles/train	4
	Speed (mph)	55
	Avg. Number of Events/hr	31
Distance	Distance from Source to Receiver (ft)	391
	Number of Intervening Rows of Buildings	1
Adjustments	Noise Barrier?	No

Project Results Summary

Existing Ldn:	69 dBA
Total Project Ldn:	53 dBA
Total Noise Exposure:	69 dBA
Increase:	0 dB
Impact?:	None

Distance to Impact Contours

Dist to Mod. Impact Contour (Source 1):	158 ft
Dist to Sev. Impact Contour (Source 1):	71 ft

Source 1 Results

Leq(day):	49.1 dBA
Leq(night):	46.3 dBA
Ldn:	53.2 dBA

Project: LAX Master Plan EIS
Receiver: Receiver 8-Marritot Hotel

Source	Distance	Project Ldn	Existing Ldn	Noise Criteria		Impact?
				Mod. Impact	Sev. Impact	
1 Automated Guideway Trans	391 ft	53.2 dBA	69 dBA	64 dBA	69 dBA	None
2 --	50 ft		69 dBA	64 dBA	69 dBA	
3 --	ft		69 dBA	64 dBA	69 dBA	
4 --	ft		69 dBA	64 dBA	69 dBA	
5 --	ft		69 dBA	64 dBA	69 dBA	
6 --	ft		69 dBA	64 dBA	69 dBA	
Combined Sources		53 dBA	69 dBA	64 dBA	69 dBA	None

Federal Transit Administration
 Noise Impact Assessment Spreadsheet
 Copyright 2007 HMMH Inc.
 version: 7/3/2007

Project:	LAX Master Plan EIS
-----------------	---------------------

Receiver Parameters	
Receiver:	Receiver 9 - Hilton Hotel
Land Use Category:	2. Residential
Existing Noise (Measured or Generic Value):	70 dBA

Noise Source Parameters	
Number of Noise Sources:	1

Noise Source Parameters		Source 1
	Source Type:	Fixed Guideway
	Specific Source:	Automated Guideway Transit /Steel Wheel
Daytime hrs	Avg. Number of vehicles/train	4
	Speed (mph)	55
	Avg. Number of Events/hr	59
Nighttime hrs	Avg. Number of vehicles/train	4
	Speed (mph)	55
	Avg. Number of Events/hr	31
Distance	Distance from Source to Receiver (ft)	21
	Number of Intervening Rows of Buildings	0
Adjustments	Noise Barrier?	No

Project Results Summary

Existing Ldn:	70 dBA
Total Project Ldn:	77 dBA
Total Noise Exposure:	78 dBA
Increase:	8 dB
Impact?:	Severe

Distance to Impact Contours

Dist to Mod. Impact Contour (Source 1):	141 ft
Dist to Sev. Impact Contour (Source 1):	64 ft

Source 1 Results

Leq(day):	72.6 dBA
Leq(night):	69.8 dBA
Ldn:	76.8 dBA

Project: LAX Master Plan EIS
Receiver: Receiver 9 - Hilton Hotel

Source	Distance	Project Ldn	Existing Ldn	Noise Criteria		Impact?
				Mod. Impact	Sev. Impact	
1 Automated Guideway Transi	21 ft	76.8 dBA	70 dBA	64 dBA	69 dBA	Severe Impact
2 --	50 ft		70 dBA	64 dBA	69 dBA	
3 --	ft		70 dBA	64 dBA	69 dBA	
4 --	ft		70 dBA	64 dBA	69 dBA	
5 --	ft		70 dBA	64 dBA	69 dBA	
6 --	ft		70 dBA	64 dBA	69 dBA	
Combined Sources		77 dBA	70 dBA	64 dBA	69 dBA	Severe Impact

Federal Transit Administration
 Noise Impact Assessment Spreadsheet
 Copyright 2007 HMMH Inc.
 version: 7/3/2007

Project:	LAX Master Plan EIS
-----------------	---------------------

Receiver Parameters	
Receiver:	Receiver 10-Westin Hotel
Land Use Category:	2. Residential
Existing Noise (Measured or Generic Value):	70 dBA

Noise Source Parameters	
Number of Noise Sources:	1

Noise Source Parameters		Source 1
	Source Type:	Fixed Guideway
	Specific Source:	Automated Guideway Transit /Steel Wheel
Daytime hrs	Avg. Number of vehicles/train	4
	Speed (mph)	55
	Avg. Number of Events/hr	59
Nighttime hrs	Avg. Number of vehicles/train	4
	Speed (mph)	55
	Avg. Number of Events/hr	31
Distance	Distance from Source to Receiver (ft)	1661
	Number of Intervening Rows of Buildings	1
Adjustments	Noise Barrier?	No

Project Results Summary

Existing Ldn:	70 dBA
Total Project Ldn:	44 dBA
Total Noise Exposure:	70 dBA
Increase:	0 dB
Impact?:	None

Distance to Impact Contours

Dist to Mod. Impact Contour (Source 1):	141 ft
Dist to Sev. Impact Contour (Source 1):	64 ft

Source 1 Results

Leq(day):	39.6 dBA
Leq(night):	36.8 dBA
Ldn:	43.8 dBA

Project: LAX Master Plan EIS
 Receiver: Receiver 10-Westin Hotel

Source	Distance	Project Ldn	Existing Ldn	Noise Criteria		Impact?
				Mod. Impact	Sev. Impact	
1 Automated Guideway Trans	1661 ft	43.8 dBA	70 dBA	64 dBA	69 dBA	None
2 --	50 ft		70 dBA	64 dBA	69 dBA	
3 --	ft		70 dBA	64 dBA	69 dBA	
4 --	ft		70 dBA	64 dBA	69 dBA	
5 --	ft		70 dBA	64 dBA	69 dBA	
6 --	ft		70 dBA	64 dBA	69 dBA	
Combined Sources		44 dBA	70 dBA	64 dBA	69 dBA	None

Alternative 3 – APM on Century Blvd Rubber Tire

Federal Transit Administration
 Noise Impact Assessment Spreadsheet
 Copyright 2007 HMMH Inc.
 version: 7/3/2007

Project:	LAX Master Plan EIS
-----------------	----------------------------

Receiver Parameters	
Receiver:	Receiver 1 - Radisson Hotel
Land Use Category:	2. Residential
Existing Noise (Measured or Generic Value):	68 dBA

Noise Source Parameters	
Number of Noise Sources:	1

Noise Source Parameters		Source 1
	Source Type:	Fixed Guideway
	Specific Source:	Automated Guideway Transit /Rubber Tire
Daytime hrs	Avg. Number of vehicles/train	6
	Speed (mph)	45
	Avg. Number of Events/hr	59
Nighttime hrs	Avg. Number of vehicles/train	6
	Speed (mph)	45
	Avg. Number of Events/hr	31
Distance	Distance from Source to Receiver (ft)	560
	Number of Intervening Rows of Buildings	1
Adjustments	Noise Barrier?	No

Project Results Summary

Existing Ldn:	68 dBA
Total Project Ldn:	51 dBA
Total Noise Exposure:	68 dBA
Increase:	0 dB
Impact?:	None

Distance to Impact Contours

Dist to Mod. Impact Contour (Source 1):	177 ft
Dist to Sev. Impact Contour (Source 1):	79 ft

Source 1 Results

Leq(day):	46.7 dBA
Leq(night):	43.9 dBA
Ldn:	50.9 dBA

Federal Transit Administration
 Noise Impact Assessment Spreadsheet
 Copyright 2007 HMMH Inc.
 version: 7/3/2007

Project:	LAX Master Plan EIS
-----------------	----------------------------

Receiver Parameters	
Receiver:	Receiver 2A - Courtyard by Marriot
Land Use Category:	2. Residential
Existing Noise (Measured or Generic Value):	67 dBA

Noise Source Parameters	
Number of Noise Sources:	1

Noise Source Parameters		Source 1
	Source Type:	Fixed Guideway
	Specific Source:	Automated Guideway Transit /Rubber Tire
Daytime hrs	Avg. Number of vehicles/train	6
	Speed (mph)	45
	Avg. Number of Events/hr	59
Nighttime hrs	Avg. Number of vehicles/train	6
	Speed (mph)	45
	Avg. Number of Events/hr	31
Distance	Distance from Source to Receiver (ft)	415
	Number of Intervening Rows of Buildings	1
Adjustments	Noise Barrier?	No

Project Results Summary

Existing Ldn:	67 dBA
Total Project Ldn:	53 dBA
Total Noise Exposure:	67 dBA
Increase:	0 dB
Impact?:	None

Distance to Impact Contours

Dist to Mod. Impact Contour (Source 1):	197 ft
Dist to Sev. Impact Contour (Source 1):	88 ft

Source 1 Results

Leq(day):	48.7 dBA
Leq(night):	45.9 dBA
Ldn:	52.8 dBA

Federal Transit Administration
 Noise Impact Assessment Spreadsheet
 Copyright 2007 HMMH Inc.
 version: 7/3/2007

Project:	LAX Master Plan EIS
-----------------	----------------------------

Receiver Parameters	
Receiver:	Receiver 3A- Sheraton Hotel
Land Use Category:	2. Residential
Existing Noise (Measured or Generic Value):	69 dBA

Noise Source Parameters	
Number of Noise Sources:	1

Noise Source Parameters		Source 1
	Source Type:	Fixed Guideway
	Specific Source:	Automated Guideway Transit /Rubber Tire
Daytime hrs	Avg. Number of vehicles/train	6
	Speed (mph)	45
	Avg. Number of Events/hr	59
Nighttime hrs	Avg. Number of vehicles/train	6
	Speed (mph)	45
	Avg. Number of Events/hr	31
Distance	Distance from Source to Receiver (ft)	205
	Number of Intervening Rows of Buildings	0
Adjustments	Noise Barrier?	No

Project Results Summary

Existing Ldn:	69 dBA
Total Project Ldn:	62 dBA
Total Noise Exposure:	70 dBA
Increase:	1 dB
Impact?:	None

Distance to Impact Contours

Dist to Mod. Impact Contour (Source 1):	158 ft
Dist to Sev. Impact Contour (Source 1):	71 ft

Source 1 Results

Leq(day):	57.8 dBA
Leq(night):	55.0 dBA
Ldn:	61.9 dBA

Federal Transit Administration
 Noise Impact Assessment Spreadsheet
 Copyright 2007 HMMH Inc.
 version: 7/3/2007

Project:	LAX Master Plan EIS
-----------------	----------------------------

Receiver Parameters	
Receiver:	Receiver 4 - Crown Plaza Hotels
Land Use Category:	2. Residential
Existing Noise (Measured or Generic Value):	68 dBA

Noise Source Parameters	
Number of Noise Sources:	1

Noise Source Parameters		Source 1
	Source Type:	Fixed Guideway
	Specific Source:	Automated Guideway Transit /Rubber Tire
Daytime hrs	Avg. Number of vehicles/train	6
	Speed (mph)	45
	Avg. Number of Events/hr	59
Nighttime hrs	Avg. Number of vehicles/train	6
	Speed (mph)	45
	Avg. Number of Events/hr	31
Distance	Distance from Source to Receiver (ft)	90
	Number of Intervening Rows of Buildings	0
Adjustments	Noise Barrier?	No

Project Results Summary

Existing Ldn:	68 dBA
Total Project Ldn:	67 dBA
Total Noise Exposure:	71 dBA
Increase:	3 dB
Impact?:	Moderate

Distance to Impact Contours

Dist to Mod. Impact Contour (Source 1):	177 ft
Dist to Sev. Impact Contour (Source 1):	79 ft

Source 1 Results

Leq(day):	63.1 dBA
Leq(night):	60.4 dBA
Ldn:	67.3 dBA

Federal Transit Administration
 Noise Impact Assessment Spreadsheet
 Copyright 2007 HMMH Inc.
 version: 7/3/2007

Project:	LAX Master Plan EIS
-----------------	----------------------------

Receiver Parameters	
Receiver:	Receiver 5A-Embassy Suites
Land Use Category:	2. Residential
Existing Noise (Measured or Generic Value):	68 dBA

Noise Source Parameters	
Number of Noise Sources:	1

Noise Source Parameters		Source 1
	Source Type:	Fixed Guideway
	Specific Source:	Automated Guideway Transit /Rubber Tire
Daytime hrs	Avg. Number of vehicles/train	6
	Speed (mph)	45
	Avg. Number of Events/hr	59
Nighttime hrs	Avg. Number of vehicles/train	6
	Speed (mph)	45
	Avg. Number of Events/hr	31
Distance	Distance from Source to Receiver (ft)	390
	Number of Intervening Rows of Buildings	1
Adjustments	Noise Barrier?	No

Project Results Summary

Existing Ldn:	68 dBA
Total Project Ldn:	53 dBA
Total Noise Exposure:	68 dBA
Increase:	0 dB
Impact?:	None

Distance to Impact Contours

Dist to Mod. Impact Contour (Source 1):	177 ft
Dist to Sev. Impact Contour (Source 1):	79 ft

Source 1 Results

Leq(day):	49.1 dBA
Leq(night):	46.3 dBA
Ldn:	53.2 dBA

Federal Transit Administration
 Noise Impact Assessment Spreadsheet
 Copyright 2007 HMMH Inc.
 version: 7/3/2007

Project:	LAX Master Plan EIS
-----------------	----------------------------

Receiver Parameters	
Receiver:	Receiver 6A - Renaissance Hotel
Land Use Category:	2. Residential
Existing Noise (Measured or Generic Value):	67 dBA

Noise Source Parameters	
Number of Noise Sources:	1

Noise Source Parameters		Source 1
	Source Type:	Fixed Guideway
	Specific Source:	Automated Guideway Transit /Rubber Tire
Daytime hrs	Avg. Number of vehicles/train	6
	Speed (mph)	45
	Avg. Number of Events/hr	59
Nighttime hrs	Avg. Number of vehicles/train	6
	Speed (mph)	45
	Avg. Number of Events/hr	31
Distance	Distance from Source to Receiver (ft)	290
	Number of Intervening Rows of Buildings	0
Adjustments	Noise Barrier?	No

Project Results Summary

Existing Ldn:	67 dBA
Total Project Ldn:	60 dBA
Total Noise Exposure:	68 dBA
Increase:	1 dB
Impact?:	None

Distance to Impact Contours

Dist to Mod. Impact Contour (Source 1):	197 ft
Dist to Sev. Impact Contour (Source 1):	88 ft

Source 1 Results

Leq(day):	55.5 dBA
Leq(night):	52.7 dBA
Ldn:	59.7 dBA

Federal Transit Administration
 Noise Impact Assessment Spreadsheet
 Copyright 2007 HMMH Inc.
 version: 7/3/2007

Project:	LAX Master Plan EIS
-----------------	----------------------------

Receiver Parameters	
Receiver:	Receiver 7 - Four Points Shearaton
Land Use Category:	2. Residential
Existing Noise (Measured or Generic Value):	67 dBA

Noise Source Parameters	
Number of Noise Sources:	1

Noise Source Parameters		Source 1
	Source Type:	Fixed Guideway
	Specific Source:	Automated Guideway Transit /Rubber Tire
Daytime hrs	Avg. Number of vehicles/train	6
	Speed (mph)	45
	Avg. Number of Events/hr	59
Nighttime hrs	Avg. Number of vehicles/train	6
	Speed (mph)	45
	Avg. Number of Events/hr	31
Distance	Distance from Source to Receiver (ft)	705
	Number of Intervening Rows of Buildings	1
Adjustments	Noise Barrier?	No

Project Results Summary

Existing Ldn:	67 dBA
Total Project Ldn:	49 dBA
Total Noise Exposure:	67 dBA
Increase:	0 dB
Impact?:	None

Distance to Impact Contours

Dist to Mod. Impact Contour (Source 1):	197 ft
Dist to Sev. Impact Contour (Source 1):	88 ft

Source 1 Results

Leq(day):	45.2 dBA
Leq(night):	42.4 dBA
Ldn:	49.4 dBA

Federal Transit Administration
 Noise Impact Assessment Spreadsheet
 Copyright 2007 HMMH Inc.
 version: 7/3/2007

Project:	LAX Master Plan EIS
-----------------	----------------------------

Receiver Parameters	
Receiver:	Receiver 8-Marritot Hotel
Land Use Category:	2. Residential
Existing Noise (Measured or Generic Value):	69 dBA

Noise Source Parameters	
Number of Noise Sources:	1

Noise Source Parameters		Source 1
	Source Type:	Fixed Guideway
	Specific Source:	Automated Guideway Transit /Rubber Tire
Daytime hrs	Avg. Number of vehicles/train	6
	Speed (mph)	45
	Avg. Number of Events/hr	59
Nighttime hrs	Avg. Number of vehicles/train	6
	Speed (mph)	45
	Avg. Number of Events/hr	31
Distance	Distance from Source to Receiver (ft)	1060
	Number of Intervening Rows of Buildings	1
Adjustments	Noise Barrier?	No

Project Results Summary

Existing Ldn:	69 dBA
Total Project Ldn:	47 dBA
Total Noise Exposure:	69 dBA
Increase:	0 dB
Impact?:	None

Distance to Impact Contours

Dist to Mod. Impact Contour (Source 1):	158 ft
Dist to Sev. Impact Contour (Source 1):	71 ft

Source 1 Results

Leq(day):	42.6 dBA
Leq(night):	39.8 dBA
Ldn:	46.7 dBA

Federal Transit Administration
 Noise Impact Assessment Spreadsheet
 Copyright 2007 HMMH Inc.
 version: 7/3/2007

Project:	LAX Master Plan EIS
-----------------	----------------------------

Receiver Parameters	
Receiver:	Receiver 9 - Hilton Hotel
Land Use Category:	2. Residential
Existing Noise (Measured or Generic Value):	70 dBA

Noise Source Parameters	
Number of Noise Sources:	1

Noise Source Parameters		Source 1
	Source Type:	Fixed Guideway
	Specific Source:	Automated Guideway Transit /Rubber Tire
Daytime hrs	Avg. Number of vehicles/train	6
	Speed (mph)	45
	Avg. Number of Events/hr	59
Nighttime hrs	Avg. Number of vehicles/train	6
	Speed (mph)	45
	Avg. Number of Events/hr	31
Distance	Distance from Source to Receiver (ft)	21
	Number of Intervening Rows of Buildings	0
Adjustments	Noise Barrier?	No

Project Results Summary

Existing Ldn:	70 dBA
Total Project Ldn:	77 dBA
Total Noise Exposure:	78 dBA
Increase:	8 dB
Impact?:	Severe

Distance to Impact Contours

Dist to Mod. Impact Contour (Source 1):	141 ft
Dist to Sev. Impact Contour (Source 1):	64 ft

Source 1 Results

Leq(day):	72.6 dBA
Leq(night):	69.8 dBA
Ldn:	76.8 dBA

Federal Transit Administration
 Noise Impact Assessment Spreadsheet
 Copyright 2007 HMMH Inc.
 version: 7/3/2007

Project:	LAX Master Plan EIS
-----------------	----------------------------

Receiver Parameters	
Receiver:	Receiver 10-Westin Hotel
Land Use Category:	2. Residential
Existing Noise (Measured or Generic Value):	70 dBA

Noise Source Parameters	
Number of Noise Sources:	1

Noise Source Parameters		Source 1
	Source Type:	Fixed Guideway
	Specific Source:	Automated Guideway Transit /Rubber Tire
Daytime hrs	Avg. Number of vehicles/train	6
	Speed (mph)	45
	Avg. Number of Events/hr	59
Nighttime hrs	Avg. Number of vehicles/train	6
	Speed (mph)	45
	Avg. Number of Events/hr	31
Distance	Distance from Source to Receiver (ft)	1500
	Number of Intervening Rows of Buildings	1
Adjustments	Noise Barrier?	No

Project Results Summary

Existing Ldn:	70 dBA
Total Project Ldn:	44 dBA
Total Noise Exposure:	70 dBA
Increase:	0 dB
Impact?:	None

Distance to Impact Contours

Dist to Mod. Impact Contour (Source 1):	141 ft
Dist to Sev. Impact Contour (Source 1):	64 ft

Source 1 Results

Leq(day):	40.3 dBA
Leq(night):	37.5 dBA
Ldn:	44.5 dBA

Alternative 3 – APM on Century Blvd Steel Wheel

Federal Transit Administration
 Noise Impact Assessment Spreadsheet
 Copyright 2007 HMMH Inc.
 version: 7/3/2007

Project:	LAX Master Plan EIS
-----------------	----------------------------

Receiver Parameters	
Receiver:	Receiver 1 - Radisson Hotel
Land Use Category:	2. Residential
Existing Noise (Measured or Generic Value):	68 dBA

Noise Source Parameters	
Number of Noise Sources:	1

Noise Source Parameters		Source 1
	Source Type:	Fixed Guideway
	Specific Source:	Automated Guideway Transit /Steel Wheel
Daytime hrs	Avg. Number of vehicles/train	4
	Speed (mph)	55
	Avg. Number of Events/hr	59
Nighttime hrs	Avg. Number of vehicles/train	4
	Speed (mph)	55
	Avg. Number of Events/hr	31
Distance	Distance from Source to Receiver (ft)	560
	Number of Intervening Rows of Buildings	1
Adjustments	Noise Barrier?	No

Project Results Summary

Existing Ldn:	68 dBA
Total Project Ldn:	51 dBA
Total Noise Exposure:	68 dBA
Increase:	0 dB
Impact?:	None

Distance to Impact Contours

Dist to Mod. Impact Contour (Source 1):	176 ft
Dist to Sev. Impact Contour (Source 1):	79 ft

Source 1 Results

Leq(day):	46.7 dBA
Leq(night):	43.9 dBA
Ldn:	50.9 dBA

Federal Transit Administration
 Noise Impact Assessment Spreadsheet
 Copyright 2007 HMMH Inc.
 version: 7/3/2007

Project:	LAX Master Plan EIS
-----------------	----------------------------

Receiver Parameters	
Receiver:	Receptor 2A - Courtyard at Marriot
Land Use Category:	2. Residential
Existing Noise (Measured or Generic Value):	67 dBA

Noise Source Parameters	
Number of Noise Sources:	1

Noise Source Parameters		Source 1
	Source Type:	Fixed Guideway
	Specific Source:	Automated Guideway Transit /Steel Wheel
Daytime hrs	Avg. Number of vehicles/train	4
	Speed (mph)	55
	Avg. Number of Events/hr	59
Nighttime hrs	Avg. Number of vehicles/train	4
	Speed (mph)	55
	Avg. Number of Events/hr	31
Distance	Distance from Source to Receiver (ft)	415
	Number of Intervening Rows of Buildings	1
Adjustments	Noise Barrier?	No

Project Results Summary

Existing Ldn:	67 dBA
Total Project Ldn:	53 dBA
Total Noise Exposure:	67 dBA
Increase:	0 dB
Impact?:	None

Distance to Impact Contours

Dist to Mod. Impact Contour (Source 1):	197 ft
Dist to Sev. Impact Contour (Source 1):	87 ft

Source 1 Results

Leq(day):	48.7 dBA
Leq(night):	45.9 dBA
Ldn:	52.8 dBA

Federal Transit Administration
 Noise Impact Assessment Spreadsheet
 Copyright 2007 HMMH Inc.
 version: 7/3/2007

Project:	LAX Master Plan EIS
-----------------	----------------------------

Receiver Parameters	
Receiver:	Receiver 3A - Sheraton Hotel
Land Use Category:	2. Residential
Existing Noise (Measured or Generic Value):	69 dBA

Noise Source Parameters	
Number of Noise Sources:	1

Noise Source Parameters		Source 1
	Source Type:	Fixed Guideway
	Specific Source:	Automated Guideway Transit /Steel Wheel
Daytime hrs	Avg. Number of vehicles/train	4
	Speed (mph)	55
	Avg. Number of Events/hr	59
Nighttime hrs	Avg. Number of vehicles/train	4
	Speed (mph)	55
	Avg. Number of Events/hr	31
Distance	Distance from Source to Receiver (ft)	205
	Number of Intervening Rows of Buildings	0
Adjustments	Noise Barrier?	No

Project Results Summary

Existing Ldn:	69 dBA
Total Project Ldn:	62 dBA
Total Noise Exposure:	70 dBA
Increase:	1 dB
Impact?:	None

Distance to Impact Contours

Dist to Mod. Impact Contour (Source 1):	158 ft
Dist to Sev. Impact Contour (Source 1):	71 ft

Source 1 Results

Leq(day):	57.8 dBA
Leq(night):	55.0 dBA
Ldn:	61.9 dBA

Federal Transit Administration
 Noise Impact Assessment Spreadsheet
 Copyright 2007 HMMH Inc.
 version: 7/3/2007

Project:	LAX Master Plan EIS
-----------------	----------------------------

Receiver Parameters	
Receiver:	Receiver 4 - Crown Plaza Hotels
Land Use Category:	2. Residential
Existing Noise (Measured or Generic Value):	68 dBA

Noise Source Parameters	
Number of Noise Sources:	1

Noise Source Parameters		Source 1
	Source Type:	Fixed Guideway
	Specific Source:	Automated Guideway Transit /Steel Wheel
Daytime hrs	Avg. Number of vehicles/train	4
	Speed (mph)	55
	Avg. Number of Events/hr	59
Nighttime hrs	Avg. Number of vehicles/train	4
	Speed (mph)	55
	Avg. Number of Events/hr	31
Distance	Distance from Source to Receiver (ft)	90
	Number of Intervening Rows of Buildings	0
Adjustments	Noise Barrier?	No

Project Results Summary

Existing Ldn:	68 dBA
Total Project Ldn:	67 dBA
Total Noise Exposure:	71 dBA
Increase:	3 dB
Impact?:	Moderate

Distance to Impact Contours

Dist to Mod. Impact Contour (Source 1):	176 ft
Dist to Sev. Impact Contour (Source 1):	79 ft

Source 1 Results

Leq(day):	63.1 dBA
Leq(night):	60.3 dBA
Ldn:	67.3 dBA

Federal Transit Administration
 Noise Impact Assessment Spreadsheet
 Copyright 2007 HMMH Inc.
 version: 7/3/2007

Project:	LAX Master Plan EIS
-----------------	----------------------------

Receiver Parameters	
Receiver:	Receiver 5A - Embassy Suites
Land Use Category:	2. Residential
Existing Noise (Measured or Generic Value):	68 dBA

Noise Source Parameters	
Number of Noise Sources:	1

Noise Source Parameters		Source 1
	Source Type:	Fixed Guideway
	Specific Source:	Automated Guideway Transit /Steel Wheel
Daytime hrs	Avg. Number of vehicles/train	4
	Speed (mph)	55
	Avg. Number of Events/hr	59
Nighttime hrs	Avg. Number of vehicles/train	4
	Speed (mph)	55
	Avg. Number of Events/hr	31
Distance	Distance from Source to Receiver (ft)	390
	Number of Intervening Rows of Buildings	1
Adjustments	Noise Barrier?	No

Project Results Summary

Existing Ldn:	68 dBA
Total Project Ldn:	53 dBA
Total Noise Exposure:	68 dBA
Increase:	0 dB
Impact?:	None

Distance to Impact Contours

Dist to Mod. Impact Contour (Source 1):	176 ft
Dist to Sev. Impact Contour (Source 1):	79 ft

Source 1 Results

Leq(day):	49.1 dBA
Leq(night):	46.3 dBA
Ldn:	53.2 dBA

Federal Transit Administration
 Noise Impact Assessment Spreadsheet
 Copyright 2007 HMMH Inc.
 version: 7/3/2007

Project:	LAX Master Plan EIS
-----------------	----------------------------

Receiver Parameters	
Receiver:	Receiver 6 - Renaissance Hotel
Land Use Category:	2. Residential
Existing Noise (Measured or Generic Value):	67 dBA

Noise Source Parameters	
Number of Noise Sources:	1

Noise Source Parameters		Source 1
	Source Type:	Fixed Guideway
	Specific Source:	Automated Guideway Transit /Steel Wheel
Daytime hrs	Avg. Number of vehicles/train	4
	Speed (mph)	55
	Avg. Number of Events/hr	59
Nighttime hrs	Avg. Number of vehicles/train	4
	Speed (mph)	55
	Avg. Number of Events/hr	31
Distance	Distance from Source to Receiver (ft)	290
	Number of Intervening Rows of Buildings	0
Adjustments	Noise Barrier?	No

Project Results Summary

Existing Ldn:	67 dBA
Total Project Ldn:	60 dBA
Total Noise Exposure:	68 dBA
Increase:	1 dB
Impact?:	None

Distance to Impact Contours

Dist to Mod. Impact Contour (Source 1):	197 ft
Dist to Sev. Impact Contour (Source 1):	87 ft

Source 1 Results

Leq(day):	55.5 dBA
Leq(night):	52.7 dBA
Ldn:	59.6 dBA

Federal Transit Administration
 Noise Impact Assessment Spreadsheet
 Copyright 2007 HMMH Inc.
 version: 7/3/2007

Project:	LAX Master Plan EIS
-----------------	----------------------------

Receiver Parameters	
Receiver:	Receiver 7 - Four Points Shearaton
Land Use Category:	2. Residential
Existing Noise (Measured or Generic Value):	67 dBA

Noise Source Parameters	
Number of Noise Sources:	1

Noise Source Parameters		Source 1
	Source Type:	Fixed Guideway
	Specific Source:	Automated Guideway Transit /Steel Wheel
Daytime hrs	Avg. Number of vehicles/train	4
	Speed (mph)	55
	Avg. Number of Events/hr	59
Nighttime hrs	Avg. Number of vehicles/train	4
	Speed (mph)	55
	Avg. Number of Events/hr	31
Distance	Distance from Source to Receiver (ft)	705
	Number of Intervening Rows of Buildings	1
Adjustments	Noise Barrier?	No

Project Results Summary

Existing Ldn:	67 dBA
Total Project Ldn:	49 dBA
Total Noise Exposure:	67 dBA
Increase:	0 dB
Impact?:	None

Distance to Impact Contours

Dist to Mod. Impact Contour (Source 1):	197 ft
Dist to Sev. Impact Contour (Source 1):	87 ft

Source 1 Results

Leq(day):	45.2 dBA
Leq(night):	42.4 dBA
Ldn:	49.4 dBA

Federal Transit Administration
 Noise Impact Assessment Spreadsheet
 Copyright 2007 HMMH Inc.
 version: 7/3/2007

Project:	LAX Master Plan EIS
-----------------	----------------------------

Receiver Parameters	
Receiver:	Receiver 8-Marritot Hotel
Land Use Category:	2. Residential
Existing Noise (Measured or Generic Value):	69 dBA

Noise Source Parameters	
Number of Noise Sources:	1

Noise Source Parameters		Source 1
	Source Type:	Fixed Guideway
	Specific Source:	Automated Guideway Transit /Steel Wheel
Daytime hrs	Avg. Number of vehicles/train	4
	Speed (mph)	55
	Avg. Number of Events/hr	59
Nighttime hrs	Avg. Number of vehicles/train	4
	Speed (mph)	55
	Avg. Number of Events/hr	31
Distance	Distance from Source to Receiver (ft)	1060
	Number of Intervening Rows of Buildings	1
Adjustments	Noise Barrier?	No

Project Results Summary

Existing Ldn:	69 dBA
Total Project Ldn:	47 dBA
Total Noise Exposure:	69 dBA
Increase:	0 dB
Impact?:	None

Distance to Impact Contours

Dist to Mod. Impact Contour (Source 1):	158 ft
Dist to Sev. Impact Contour (Source 1):	71 ft

Source 1 Results

Leq(day):	42.6 dBA
Leq(night):	39.8 dBA
Ldn:	46.7 dBA

Federal Transit Administration
 Noise Impact Assessment Spreadsheet
 Copyright 2007 HMMH Inc.
 version: 7/3/2007

Project:	LAX Master Plan EIS
-----------------	----------------------------

Receiver Parameters	
Receiver:	Receiver 9A - Hilton Hotel
Land Use Category:	2. Residential
Existing Noise (Measured or Generic Value):	70 dBA

Noise Source Parameters	
Number of Noise Sources:	1

Noise Source Parameters		Source 1
	Source Type:	Fixed Guideway
	Specific Source:	Automated Guideway Transit /Steel Wheel
Daytime hrs	Avg. Number of vehicles/train	4
	Speed (mph)	55
	Avg. Number of Events/hr	59
Nighttime hrs	Avg. Number of vehicles/train	4
	Speed (mph)	55
	Avg. Number of Events/hr	31
Distance	Distance from Source to Receiver (ft)	21
	Number of Intervening Rows of Buildings	0
Adjustments	Noise Barrier?	No

Project Results Summary

Existing Ldn:	70 dBA
Total Project Ldn:	77 dBA
Total Noise Exposure:	78 dBA
Increase:	8 dB
Impact?:	Severe

Distance to Impact Contours

Dist to Mod. Impact Contour (Source 1):	141 ft
Dist to Sev. Impact Contour (Source 1):	64 ft

Source 1 Results

Leq(day):	72.6 dBA
Leq(night):	69.8 dBA
Ldn:	76.8 dBA

Federal Transit Administration
 Noise Impact Assessment Spreadsheet
 Copyright 2007 HMMH Inc.
 version: 7/3/2007

Project:	LAX Master Plan EIS
-----------------	----------------------------

Receiver Parameters	
Receiver:	Receiver 10-Westin Hotel
Land Use Category:	2. Residential
Existing Noise (Measured or Generic Value):	70 dBA

Noise Source Parameters	
Number of Noise Sources:	1

Noise Source Parameters		Source 1
	Source Type:	Fixed Guideway
	Specific Source:	Automated Guideway Transit /Steel Wheel
Daytime hrs	Avg. Number of vehicles/train	4
	Speed (mph)	55
	Avg. Number of Events/hr	59
Nighttime hrs	Avg. Number of vehicles/train	4
	Speed (mph)	55
	Avg. Number of Events/hr	31
Distance	Distance from Source to Receiver (ft)	1500
	Number of Intervening Rows of Buildings	1
Adjustments	Noise Barrier?	No

Project Results Summary

Existing Ldn:	70 dBA
Total Project Ldn:	44 dBA
Total Noise Exposure:	70 dBA
Increase:	0 dB
Impact?:	None

Distance to Impact Contours

Dist to Mod. Impact Contour (Source 1):	141 ft
Dist to Sev. Impact Contour (Source 1):	64 ft

Source 1 Results

Leq(day):	40.3 dBA
Leq(night):	37.5 dBA
Ldn:	44.4 dBA

Alternative 8

Federal Transit Administration
 Noise Impact Assessment Spreadsheet
 Copyright 2007 HMMH Inc.
 version: 7/3/2007

Project:	LAX Master Plan EIS
-----------------	---------------------

Receiver Parameters	
Receiver:	Receiver 1 - Radisson Hotel
Land Use Category:	2. Residential
Existing Noise (Measured or Generic Value):	68 dBA

Noise Source Parameters	
Number of Noise Sources:	1

Noise Source Parameters		Source 1
	Source Type:	Highway/Transit
	Specific Source:	Buses (diesel-powered)
Daytime hrs	Speed (mph)	35
	Avg. Number of Events/hr	128
Nighttime hrs	Speed (mph)	40
	Avg. Number of Events/hr	20
Distance	Distance from Source to Receiver (ft)	371
	Number of Intervening Rows of Buildings	1
Adjustments	Noise Barrier?	No

Project Results Summary

Existing Ldn:	68 dBA
Total Project Ldn:	49 dBA
Total Noise Exposure:	68 dBA
Increase:	0 dB
Impact?:	None

Distance to Impact Contours

Dist to Mod. Impact Contour (Source 1):	86 ft
Dist to Sev. Impact Contour (Source 1):	39 ft

Source 1 Results

Leq(day):	47.6 dBA
Leq(night):	40.4 dBA
Ldn:	48.9 dBA

Project: LAX Master Plan EIS
Receiver: Receiver 1 - Radisson Hotel

Source	Distance	Project Ldn	Existing Ldn	Noise Criteria		Impact?
				Mod. Impact	Sev. Impact	
1 Buses (diesel-powered)	371 ft	48.9 dBA	68 dBA	63 dBA	68 dBA	None
2 --	50 ft		68 dBA	63 dBA	68 dBA	
3 --	ft		68 dBA	63 dBA	68 dBA	
4 --	ft		68 dBA	63 dBA	68 dBA	
5 --	ft		68 dBA	63 dBA	68 dBA	
6 --	ft		68 dBA	63 dBA	68 dBA	
Combined Sources		49 dBA	68 dBA	63 dBA	68 dBA	None

Federal Transit Administration
 Noise Impact Assessment Spreadsheet
 Copyright 2007 HMMH Inc.
 version: 7/3/2007

Project:	LAX Master Plan EIS
-----------------	---------------------

Receiver Parameters	
Receiver:	Receiver 2 - Courtyard by Marriott
Land Use Category:	2. Residential
Existing Noise (Measured or Generic Value):	67 dBA

Noise Source Parameters	
Number of Noise Sources:	1

Noise Source Parameters		Source 1
	Source Type:	Highway/Transit
	Specific Source:	Buses (diesel-powered)
Daytime hrs	Speed (mph)	35
	Avg. Number of Events/hr	128
Nighttime hrs	Speed (mph)	40
	Avg. Number of Events/hr	20
Distance	Distance from Source to Receiver (ft)	46
	Number of Intervening Rows of Buildings	0
Adjustments	Noise Barrier?	No

Project Results Summary

Existing Ldn:	67 dBA
Total Project Ldn:	67 dBA
Total Noise Exposure:	70 dBA
Increase:	3 dB
Impact?:	Moderate

Distance to Impact Contours

Dist to Mod. Impact Contour (Source 1):	96 ft
Dist to Sev. Impact Contour (Source 1):	43 ft

Source 1 Results

Leq(day):	65.7 dBA
Leq(night):	58.5 dBA
Ldn:	67.0 dBA

Project: LAX Master Plan EIS
Receiver: Receiver 2 - Courtyard by Marriott

Source	Distance	Project Ldn	Existing Ldn	Noise Criteria		Impact?
				Mod. Impact	Sev. Impact	
1 Buses (diesel-powered)	46 ft	67.0 dBA	67 dBA	62 dBA	67 dBA	Moderate Impact
2 --	50 ft		67 dBA	62 dBA	67 dBA	
3 --	ft		67 dBA	62 dBA	67 dBA	
4 --	ft		67 dBA	62 dBA	67 dBA	
5 --	ft		67 dBA	62 dBA	67 dBA	
6 --	ft		67 dBA	62 dBA	67 dBA	
Combined Sources		67 dBA	67 dBA	62 dBA	67 dBA	Moderate Impact

Federal Transit Administration
 Noise Impact Assessment Spreadsheet
 Copyright 2007 HMMH Inc.
 version: 7/3/2007

Project:	LAX Master Plan EIS
-----------------	---------------------

Receiver Parameters	
Receiver:	Receiver 3 - Shearton Hotel
Land Use Category:	2. Residential
Existing Noise (Measured or Generic Value):	69 dBA

Noise Source Parameters	
Number of Noise Sources:	1

Noise Source Parameters		Source 1
	Source Type:	Highway/Transit
	Specific Source:	Buses (diesel-powered)
Daytime hrs	Speed (mph)	35
	Avg. Number of Events/hr	128
Nighttime hrs	Speed (mph)	40
	Avg. Number of Events/hr	20
Distance	Distance from Source to Receiver (ft)	138
	Number of Intervening Rows of Buildings	0
Adjustments	Noise Barrier?	No

Project Results Summary

Existing Ldn:	69 dBA
Total Project Ldn:	60 dBA
Total Noise Exposure:	69 dBA
Increase:	0 dB
Impact?:	None

Distance to Impact Contours

Dist to Mod. Impact Contour (Source 1):	77 ft
Dist to Sev. Impact Contour (Source 1):	35 ft

Source 1 Results

Leq(day):	58.5 dBA
Leq(night):	51.3 dBA
Ldn:	59.8 dBA

Project: LAX Master Plan EIS
 Receiver: Receiver 3 - Shearton Hotel

Source	Distance	Project Ldn	Existing Ldn	Noise Criteria		Impact?
				Mod. Impact	Sev. Impact	
1 Buses (diesel-powered)	138 ft	59.8 dBA	69 dBA	64 dBA	69 dBA	None
2 --	50 ft		69 dBA	64 dBA	69 dBA	
3 --	ft		69 dBA	64 dBA	69 dBA	
4 --	ft		69 dBA	64 dBA	69 dBA	
5 --	ft		69 dBA	64 dBA	69 dBA	
6 --	ft		69 dBA	64 dBA	69 dBA	
Combined Sources		60 dBA	69 dBA	64 dBA	69 dBA	None

Federal Transit Administration
 Noise Impact Assessment Spreadsheet
 Copyright 2007 HMMH Inc.
 version: 7/3/2007

Project:	LAX Master Plan EIS
-----------------	---------------------

Receiver Parameters	
Receiver:	Receiver 4 - Crown Plaza Hotels
Land Use Category:	2. Residential
Existing Noise (Measured or Generic Value):	68 dBA

Noise Source Parameters	
Number of Noise Sources:	1

Noise Source Parameters		Source 1
	Source Type:	Highway/Transit
	Specific Source:	Buses (diesel-powered)
Daytime hrs	Speed (mph)	35
	Avg. Number of Events/hr	128
Nighttime hrs	Speed (mph)	40
	Avg. Number of Events/hr	20
Distance	Distance from Source to Receiver (ft)	435
	Number of Intervening Rows of Buildings	1
Adjustments	Noise Barrier?	No

Project Results Summary

Existing Ldn:	68 dBA
Total Project Ldn:	48 dBA
Total Noise Exposure:	68 dBA
Increase:	0 dB
Impact?:	None

Distance to Impact Contours

Dist to Mod. Impact Contour (Source 1):	86 ft
Dist to Sev. Impact Contour (Source 1):	39 ft

Source 1 Results

Leq(day):	46.6 dBA
Leq(night):	39.4 dBA
Ldn:	47.8 dBA

Project: LAX Master Plan EIS
Receiver: Receiver 4 - Crown Plaza Hotels

Source	Distance	Project Ldn	Existing Ldn	Noise Criteria		Impact?
				Mod. Impact	Sev. Impact	
1 Buses (diesel-powered)	435 ft	47.8 dBA	68 dBA	63 dBA	68 dBA	None
2 --	50 ft		68 dBA	63 dBA	68 dBA	
3 --	ft		68 dBA	63 dBA	68 dBA	
4 --	ft		68 dBA	63 dBA	68 dBA	
5 --	ft		68 dBA	63 dBA	68 dBA	
6 --	ft		68 dBA	63 dBA	68 dBA	
Combined Sources		48 dBA	68 dBA	63 dBA	68 dBA	None

Federal Transit Administration
 Noise Impact Assessment Spreadsheet
 Copyright 2007 HMMH Inc.
 version: 7/3/2007

Project:	LAX Master Plan EIS
-----------------	----------------------------

Receiver Parameters	
Receiver:	Receiver 5 - Embassy Suites
Land Use Category:	2. Residential
Existing Noise (Measured or Generic Value):	68 dBA

Noise Source Parameters	
Number of Noise Sources:	1

Noise Source Parameters		Source 1
	Source Type:	Highway/Transit
	Specific Source:	Buses (diesel-powered)
Daytime hrs	Speed (mph)	35
	Avg. Number of Events/hr	128
Nighttime hrs	Speed (mph)	40
	Avg. Number of Events/hr	20
Distance	Distance from Source to Receiver (ft)	49
	Number of Intervening Rows of Buildings	0
Adjustments	Noise Barrier?	No

Project Results Summary

Existing Ldn:	68 dBA
Total Project Ldn:	67 dBA
Total Noise Exposure:	70 dBA
Increase:	2 dB
Impact?:	Moderate

Distance to Impact Contours

Dist to Mod. Impact Contour (Source 1):	86 ft
Dist to Sev. Impact Contour (Source 1):	39 ft

Source 1 Results

Leq(day):	65.3 dBA
Leq(night):	58.1 dBA
Ldn:	66.6 dBA

Project: LAX Master Plan EIS
 Receiver: Receiver 5 - Embassy Suites

Source	Distance	Project Ldn	Existing Ldn	Noise Criteria		Impact?
				Mod. Impact	Sev. Impact	
1 Buses (diesel-powered)	49 ft	66.6 dBA	68 dBA	63 dBA	68 dBA	Moderate Impact
2 --	50 ft		68 dBA	63 dBA	68 dBA	
3 --	ft		68 dBA	63 dBA	68 dBA	
4 --	ft		68 dBA	63 dBA	68 dBA	
5 --	ft		68 dBA	63 dBA	68 dBA	
6 --	ft		68 dBA	63 dBA	68 dBA	
Combined Sources		67 dBA	68 dBA	63 dBA	68 dBA	Moderate Impact

Federal Transit Administration
 Noise Impact Assessment Spreadsheet
 Copyright 2007 HMMH Inc.
 version: 7/3/2007

Project:	LAX Master Plan EIS
-----------------	----------------------------

Receiver Parameters	
Receiver:	Receiver 6 -Rebaussance Hotel
Land Use Category:	2. Residential
Existing Noise (Measured or Generic Value):	67 dBA

Noise Source Parameters	
Number of Noise Sources:	1

Noise Source Parameters		Source 1
	Source Type:	Highway/Transit
	Specific Source:	Buses (diesel-powered)
Daytime hrs	Speed (mph)	35
	Avg. Number of Events/hr	128
Nighttime hrs	Speed (mph)	40
	Avg. Number of Events/hr	20
Distance	Distance from Source to Receiver (ft)	60
	Number of Intervening Rows of Buildings	0
Adjustments	Noise Barrier?	No

Project Results Summary

Existing Ldn:	67 dBA
Total Project Ldn:	65 dBA
Total Noise Exposure:	69 dBA
Increase:	2 dB
Impact?:	Moderate

Distance to Impact Contours

Dist to Mod. Impact Contour (Source 1):	96 ft
Dist to Sev. Impact Contour (Source 1):	43 ft

Source 1 Results

Leq(day):	64.0 dBA
Leq(night):	56.8 dBA
Ldn:	65.2 dBA

Project: LAX Master Plan EIS
 Receiver: Receiver 6 -Rebaussance Hotel

Source	Distance	Project Ldn	Existing Ldn	Noise Criteria		Impact?
				Mod. Impact	Sev. Impact	
1 Buses (diesel-powered)	60 ft	65.2 dBA	67 dBA	62 dBA	67 dBA	Moderate Impact
2 --	50 ft		67 dBA	62 dBA	67 dBA	
3 --	ft		67 dBA	62 dBA	67 dBA	
4 --	ft		67 dBA	62 dBA	67 dBA	
5 --	ft		67 dBA	62 dBA	67 dBA	
6 --	ft		67 dBA	62 dBA	67 dBA	
Combined Sources		65 dBA	67 dBA	62 dBA	67 dBA	Moderate Impact

Federal Transit Administration
 Noise Impact Assessment Spreadsheet
 Copyright 2007 HMMH Inc.
 version: 7/3/2007

Project:	LAX Master Plan EIS
-----------------	---------------------

Receiver Parameters	
Receiver:	Receiver 7 - Four Points Shearaton
Land Use Category:	2. Residential
Existing Noise (Measured or Generic Value):	67 dBA

Noise Source Parameters	
Number of Noise Sources:	1

Noise Source Parameters		Source 1
	Source Type:	Highway/Transit
	Specific Source:	Buses (diesel-powered)
Daytime hrs	Speed (mph)	35
	Avg. Number of Events/hr	128
Nighttime hrs	Speed (mph)	40
	Avg. Number of Events/hr	20
Distance	Distance from Source to Receiver (ft)	35
	Number of Intervening Rows of Buildings	0
Adjustments	Noise Barrier?	No

Project Results Summary

Existing Ldn:	67 dBA
Total Project Ldn:	69 dBA
Total Noise Exposure:	71 dBA
Increase:	4 dB
Impact?:	Severe

Distance to Impact Contours

Dist to Mod. Impact Contour (Source 1):	96 ft
Dist to Sev. Impact Contour (Source 1):	43 ft

Source 1 Results

Leq(day):	67.5 dBA
Leq(night):	60.3 dBA
Ldn:	68.7 dBA

Project: LAX Master Plan EIS
Receiver: Receiver 7 - Four Points Shearaton

Source	Distance	Project Ldn	Existing Ldn	Noise Criteria		Impact?
				Mod. Impact	Sev. Impact	
1 Buses (diesel-powered)	35 ft	68.7 dBA	67 dBA	62 dBA	67 dBA	Severe Impact
2 --	50 ft		67 dBA	62 dBA	67 dBA	
3 --	ft		67 dBA	62 dBA	67 dBA	
4 --	ft		67 dBA	62 dBA	67 dBA	
5 --	ft		67 dBA	62 dBA	67 dBA	
6 --	ft		67 dBA	62 dBA	67 dBA	
Combined Sources		69 dBA	67 dBA	62 dBA	67 dBA	Severe Impact

Federal Transit Administration
 Noise Impact Assessment Spreadsheet
 Copyright 2007 HMMH Inc.
 version: 7/3/2007

Project:	LAX Master Plan EIS
-----------------	---------------------

Receiver Parameters	
Receiver:	Receiver 8-Marritot Hotel
Land Use Category:	2. Residential
Existing Noise (Measured or Generic Value):	69 dBA

Noise Source Parameters	
Number of Noise Sources:	1

Noise Source Parameters		Source 1
	Source Type:	Highway/Transit
	Specific Source:	Buses (diesel-powered)
Daytime hrs	Speed (mph)	35
	Avg. Number of Events/hr	128
Nighttime hrs	Speed (mph)	40
	Avg. Number of Events/hr	20
Distance	Distance from Source to Receiver (ft)	391
	Number of Intervening Rows of Buildings	1
Adjustments	Noise Barrier?	No

Project Results Summary

Existing Ldn:	69 dBA
Total Project Ldn:	49 dBA
Total Noise Exposure:	69 dBA
Increase:	0 dB
Impact?:	None

Distance to Impact Contours

Dist to Mod. Impact Contour (Source 1):	77 ft
Dist to Sev. Impact Contour (Source 1):	35 ft

Source 1 Results

Leq(day):	47.3 dBA
Leq(night):	40.1 dBA
Ldn:	48.5 dBA

Project: LAX Master Plan EIS
 Receiver: Receiver 8-Marritot Hotel

Source	Distance	Project Ldn	Existing Ldn	Noise Criteria		Impact?
				Mod. Impact	Sev. Impact	
1 Buses (diesel-powered)	391 ft	48.5 dBA	69 dBA	64 dBA	69 dBA	None
2 --	50 ft		69 dBA	64 dBA	69 dBA	
3 --	ft		69 dBA	64 dBA	69 dBA	
4 --	ft		69 dBA	64 dBA	69 dBA	
5 --	ft		69 dBA	64 dBA	69 dBA	
6 --	ft		69 dBA	64 dBA	69 dBA	
Combined Sources		49 dBA	69 dBA	64 dBA	69 dBA	None

Federal Transit Administration
 Noise Impact Assessment Spreadsheet
 Copyright 2007 HMMH Inc.
 version: 7/3/2007

Project:	LAX Master Plan EIS
-----------------	---------------------

Receiver Parameters	
Receiver:	Receiver 9 - Hilton Hotel
Land Use Category:	2. Residential
Existing Noise (Measured or Generic Value):	70 dBA

Noise Source Parameters	
Number of Noise Sources:	1

Noise Source Parameters		Source 1
	Source Type:	Highway/Transit
	Specific Source:	Buses (diesel-powered)
Daytime hrs	Speed (mph)	35
	Avg. Number of Events/hr	128
Nighttime hrs	Speed (mph)	40
	Avg. Number of Events/hr	20
Distance	Distance from Source to Receiver (ft)	21
	Number of Intervening Rows of Buildings	0
Adjustments	Noise Barrier?	No

Project Results Summary

Existing Ldn:	70 dBA
Total Project Ldn:	72 dBA
Total Noise Exposure:	74 dBA
Increase:	4 dB
Impact?:	Severe

Distance to Impact Contours

Dist to Mod. Impact Contour (Source 1):	69 ft
Dist to Sev. Impact Contour (Source 1):	31 ft

Source 1 Results

Leq(day):	70.8 dBA
Leq(night):	63.6 dBA
Ldn:	72.1 dBA

Project: LAX Master Plan EIS
Receiver: Receiver 9 - Hilton Hotel

Source	Distance	Project Ldn	Existing Ldn	Noise Criteria		Impact?
				Mod. Impact	Sev. Impact	
1 Buses (diesel-powered)	21 ft	72.1 dBA	70 dBA	64 dBA	69 dBA	Severe Impact
2 --	50 ft		70 dBA	64 dBA	69 dBA	
3 --	ft		70 dBA	64 dBA	69 dBA	
4 --	ft		70 dBA	64 dBA	69 dBA	
5 --	ft		70 dBA	64 dBA	69 dBA	
6 --	ft		70 dBA	64 dBA	69 dBA	
Combined Sources		72 dBA	70 dBA	64 dBA	69 dBA	Severe Impact

Federal Transit Administration
 Noise Impact Assessment Spreadsheet
 Copyright 2007 HMMH Inc.
 version: 7/3/2007

Project:	LAX Master Plan EIS
-----------------	---------------------

Receiver Parameters	
Receiver:	Receiver 10-Westin Hotel
Land Use Category:	2. Residential
Existing Noise (Measured or Generic Value):	70 dBA

Noise Source Parameters	
Number of Noise Sources:	1

Noise Source Parameters		Source 1
	Source Type:	Highway/Transit
	Specific Source:	Buses (diesel-powered)
Daytime hrs	Speed (mph)	35
	Avg. Number of Events/hr	128
Nighttime hrs	Speed (mph)	40
	Avg. Number of Events/hr	20
Distance	Distance from Source to Receiver (ft)	1661
	Number of Intervening Rows of Buildings	1
Adjustments	Noise Barrier?	No

Project Results Summary

Existing Ldn:	70 dBA
Total Project Ldn:	39 dBA
Total Noise Exposure:	70 dBA
Increase:	0 dB
Impact?:	None

Distance to Impact Contours

Dist to Mod. Impact Contour (Source 1):	69 ft
Dist to Sev. Impact Contour (Source 1):	31 ft

Source 1 Results

Leq(day):	37.8 dBA
Leq(night):	30.6 dBA
Ldn:	39.1 dBA

Project: LAX Master Plan EIS
 Receiver: Receiver 10-Westin Hotel

Source	Distance	Project Ldn	Existing Ldn	Noise Criteria		Impact?
				Mod. Impact	Sev. Impact	
1 Buses (diesel-powered)	1661 ft	39.1 dBA	70 dBA	64 dBA	69 dBA	None
2 --	50 ft		70 dBA	64 dBA	69 dBA	
3 --	ft		70 dBA	64 dBA	69 dBA	
4 --	ft		70 dBA	64 dBA	69 dBA	
5 --	ft		70 dBA	64 dBA	69 dBA	
6 --	ft		70 dBA	64 dBA	69 dBA	
Combined Sources		39 dBA	70 dBA	64 dBA	69 dBA	None

Alternative 9

Federal Transit Administration
 Noise Impact Assessment Spreadsheet
 Copyright 2007 HMMH Inc.
 version: 7/3/2007

Project:	LAX Master Plan EIS
-----------------	---------------------

Receiver Parameters	
Receiver:	Receiver 1 - Radisson Hotel
Land Use Category:	2. Residential
Existing Noise (Measured or Generic Value):	68 dBA

Noise Source Parameters	
Number of Noise Sources:	1

Noise Source Parameters		Source 1
	Source Type:	Fixed Guideway
	Specific Source:	Automated Guideway Transit /Steel Wheel
Daytime hrs	Avg. Number of vehicles/train	4
	Speed (mph)	35
	Avg. Number of Events/hr	9
Nighttime hrs	Avg. Number of vehicles/train	4
	Speed (mph)	40
	Avg. Number of Events/hr	6
Distance	Distance from Source to Receiver (ft)	371
	Number of Intervening Rows of Buildings	1
Adjustments	Noise Barrier?	No

Project Results Summary

Existing Ldn:	68 dBA
Total Project Ldn:	43 dBA
Total Noise Exposure:	68 dBA
Increase:	0 dB
Impact?:	None

Distance to Impact Contours

Dist to Mod. Impact Contour (Source 1):	36 ft
Dist to Sev. Impact Contour (Source 1):	16 ft

Source 1 Results

Leq(day):	37.3 dBA
Leq(night):	36.7 dBA
Ldn:	43.2 dBA

Project: LAX Master Plan EIS
Receiver: Receiver 1 - Radisson Hotel

Source	Distance	Project Ldn	Existing Ldn	Noise Criteria		Impact?
				Mod. Impact	Sev. Impact	
1 Automated Guideway Trans	371 ft	43.2 dBA	68 dBA	63 dBA	68 dBA	None
2 --	50 ft		68 dBA	63 dBA	68 dBA	
3 --	ft		68 dBA	63 dBA	68 dBA	
4 --	ft		68 dBA	63 dBA	68 dBA	
5 --	ft		68 dBA	63 dBA	68 dBA	
6 --	ft		68 dBA	63 dBA	68 dBA	
Combined Sources		43 dBA	68 dBA	63 dBA	68 dBA	None

Federal Transit Administration
 Noise Impact Assessment Spreadsheet
 Copyright 2007 HMMH Inc.
 version: 7/3/2007

Project:	LAX Master Plan EIS
-----------------	---------------------

Receiver Parameters	
Receiver:	Receiver 2 - Courtyard by Marriott
Land Use Category:	2. Residential
Existing Noise (Measured or Generic Value):	67 dBA

Noise Source Parameters	
Number of Noise Sources:	1

Noise Source Parameters		Source 1
	Source Type:	Fixed Guideway
	Specific Source:	Automated Guideway Transit /Steel Wheel
Daytime hrs	Avg. Number of vehicles/train	4
	Speed (mph)	35
	Avg. Number of Events/hr	9
Nighttime hrs	Avg. Number of vehicles/train	4
	Speed (mph)	40
	Avg. Number of Events/hr	6
Distance	Distance from Source to Receiver (ft)	46
	Number of Intervening Rows of Buildings	0
Adjustments	Noise Barrier?	No

Project Results Summary

Existing Ldn:	67 dBA
Total Project Ldn:	61 dBA
Total Noise Exposure:	68 dBA
Increase:	1 dB
Impact?:	None

Distance to Impact Contours

Dist to Mod. Impact Contour (Source 1):	40 ft
Dist to Sev. Impact Contour (Source 1):	18 ft

Source 1 Results

Leq(day):	55.4 dBA
Leq(night):	54.8 dBA
Ldn:	61.3 dBA

Project: LAX Master Plan EIS
Receiver: Receiver 2 - Courtyard by Marriott

Source	Distance	Project Ldn	Existing Ldn	Noise Criteria		Impact?
				Mod. Impact	Sev. Impact	
1 Automated Guideway Trans	46 ft	61.3 dBA	67 dBA	62 dBA	67 dBA	None
2 --	50 ft		67 dBA	62 dBA	67 dBA	
3 --	ft		67 dBA	62 dBA	67 dBA	
4 --	ft		67 dBA	62 dBA	67 dBA	
5 --	ft		67 dBA	62 dBA	67 dBA	
6 --	ft		67 dBA	62 dBA	67 dBA	
Combined Sources		61 dBA	67 dBA	62 dBA	67 dBA	None

Federal Transit Administration
 Noise Impact Assessment Spreadsheet
 Copyright 2007 HMMH Inc.
 version: 7/3/2007

Project:	LAX Master Plan EIS
-----------------	---------------------

Receiver Parameters	
Receiver:	Receiver 3 - Shearton Hotel
Land Use Category:	2. Residential
Existing Noise (Measured or Generic Value):	69 dBA

Noise Source Parameters	
Number of Noise Sources:	1

Noise Source Parameters		Source 1
	Source Type:	Fixed Guideway
	Specific Source:	Automated Guideway Transit /Steel Wheel
Daytime hrs	Avg. Number of vehicles/train	4
	Speed (mph)	35
	Avg. Number of Events/hr	9
Nighttime hrs	Avg. Number of vehicles/train	4
	Speed (mph)	40
	Avg. Number of Events/hr	6
Distance	Distance from Source to Receiver (ft)	138
	Number of Intervening Rows of Buildings	0
Adjustments	Noise Barrier?	No

Project Results Summary

Existing Ldn:	69 dBA
Total Project Ldn:	54 dBA
Total Noise Exposure:	69 dBA
Increase:	0 dB
Impact?:	None

Distance to Impact Contours

Dist to Mod. Impact Contour (Source 1):	32 ft
Dist to Sev. Impact Contour (Source 1):	15 ft

Source 1 Results

Leq(day):	48.3 dBA
Leq(night):	47.7 dBA
Ldn:	54.2 dBA

Project: LAX Master Plan EIS
Receiver: Receiver 3 - Shearton Hotel

Source	Distance	Project Ldn	Existing Ldn	Noise Criteria		Impact?
				Mod. Impact	Sev. Impact	
1 Automated Guideway Trans	138 ft	54.2 dBA	69 dBA	64 dBA	69 dBA	None
2 --	50 ft		69 dBA	64 dBA	69 dBA	
3 --	ft		69 dBA	64 dBA	69 dBA	
4 --	ft		69 dBA	64 dBA	69 dBA	
5 --	ft		69 dBA	64 dBA	69 dBA	
6 --	ft		69 dBA	64 dBA	69 dBA	
Combined Sources		54 dBA	69 dBA	64 dBA	69 dBA	None

Federal Transit Administration
 Noise Impact Assessment Spreadsheet
 Copyright 2007 HMMH Inc.
 version: 7/3/2007

Project:	LAX Master Plan EIS
-----------------	---------------------

Receiver Parameters	
Receiver:	Receiver 4 - Crown Plaza Hotels
Land Use Category:	2. Residential
Existing Noise (Measured or Generic Value):	68 dBA

Noise Source Parameters	
Number of Noise Sources:	1

Noise Source Parameters		Source 1
	Source Type:	Fixed Guideway
	Specific Source:	Automated Guideway Transit /Steel Wheel
Daytime hrs	Avg. Number of vehicles/train	4
	Speed (mph)	35
	Avg. Number of Events/hr	9
Nighttime hrs	Avg. Number of vehicles/train	4
	Speed (mph)	40
	Avg. Number of Events/hr	6
Distance	Distance from Source to Receiver (ft)	435
	Number of Intervening Rows of Buildings	1
Adjustments	Noise Barrier?	No

Project Results Summary

Existing Ldn:	68 dBA
Total Project Ldn:	42 dBA
Total Noise Exposure:	68 dBA
Increase:	0 dB
Impact?:	None

Distance to Impact Contours

Dist to Mod. Impact Contour (Source 1):	36 ft
Dist to Sev. Impact Contour (Source 1):	16 ft

Source 1 Results

Leq(day):	36.3 dBA
Leq(night):	35.7 dBA
Ldn:	42.2 dBA

Project: LAX Master Plan EIS
Receiver: Receiver 4 - Crown Plaza Hotels

Source	Distance	Project Ldn	Existing Ldn	Noise Criteria		Impact?
				Mod. Impact	Sev. Impact	
1 Automated Guideway Trans	435 ft	42.2 dBA	68 dBA	63 dBA	68 dBA	None
2 --	50 ft		68 dBA	63 dBA	68 dBA	
3 --	ft		68 dBA	63 dBA	68 dBA	
4 --	ft		68 dBA	63 dBA	68 dBA	
5 --	ft		68 dBA	63 dBA	68 dBA	
6 --	ft		68 dBA	63 dBA	68 dBA	
Combined Sources		42 dBA	68 dBA	63 dBA	68 dBA	None

Federal Transit Administration
 Noise Impact Assessment Spreadsheet
 Copyright 2007 HMMH Inc.
 version: 7/3/2007

Project:	LAX Master Plan EIS
-----------------	---------------------

Receiver Parameters	
Receiver:	Receiver 5 - Embassy Suites
Land Use Category:	2. Residential
Existing Noise (Measured or Generic Value):	68 dBA

Noise Source Parameters	
Number of Noise Sources:	1

Noise Source Parameters		Source 1
	Source Type:	Fixed Guideway
	Specific Source:	Automated Guideway Transit /Steel Wheel
Daytime hrs	Avg. Number of vehicles/train	4
	Speed (mph)	35
	Avg. Number of Events/hr	9
Nighttime hrs	Avg. Number of vehicles/train	4
	Speed (mph)	40
	Avg. Number of Events/hr	6
Distance	Distance from Source to Receiver (ft)	49
	Number of Intervening Rows of Buildings	0
Adjustments	Noise Barrier?	No

Project Results Summary

Existing Ldn:	68 dBA
Total Project Ldn:	61 dBA
Total Noise Exposure:	69 dBA
Increase:	1 dB
Impact?:	None

Distance to Impact Contours

Dist to Mod. Impact Contour (Source 1):	36 ft
Dist to Sev. Impact Contour (Source 1):	16 ft

Source 1 Results

Leq(day):	55.0 dBA
Leq(night):	54.4 dBA
Ldn:	60.9 dBA

Project: LAX Master Plan EIS
Receiver: Receiver 5 - Embassy Suites

Source	Distance	Project Ldn	Existing Ldn	Noise Criteria		Impact?
				Mod. Impact	Sev. Impact	
1 Automated Guideway Trans	49 ft	60.9 dBA	68 dBA	63 dBA	68 dBA	None
2 --	50 ft		68 dBA	63 dBA	68 dBA	
3 --	ft		68 dBA	63 dBA	68 dBA	
4 --	ft		68 dBA	63 dBA	68 dBA	
5 --	ft		68 dBA	63 dBA	68 dBA	
6 --	ft		68 dBA	63 dBA	68 dBA	
Combined Sources		61 dBA	68 dBA	63 dBA	68 dBA	None

Federal Transit Administration
 Noise Impact Assessment Spreadsheet
 Copyright 2007 HMMH Inc.
 version: 7/3/2007

Project:	LAX Master Plan EIS
-----------------	---------------------

Receiver Parameters	
Receiver:	Receiver 6 -Rebaussance Hotel
Land Use Category:	2. Residential
Existing Noise (Measured or Generic Value):	67 dBA

Noise Source Parameters	
Number of Noise Sources:	1

Noise Source Parameters		Source 1
	Source Type:	Fixed Guideway
	Specific Source:	Automated Guideway Transit /Steel Wheel
Daytime hrs	Avg. Number of vehicles/train	4
	Speed (mph)	35
	Avg. Number of Events/hr	9
Nighttime hrs	Avg. Number of vehicles/train	4
	Speed (mph)	40
	Avg. Number of Events/hr	6
Distance	Distance from Source to Receiver (ft)	60
	Number of Intervening Rows of Buildings	0
Adjustments	Noise Barrier?	No

Project Results Summary

Existing Ldn:	67 dBA
Total Project Ldn:	60 dBA
Total Noise Exposure:	68 dBA
Increase:	1 dB
Impact?:	None

Distance to Impact Contours

Dist to Mod. Impact Contour (Source 1):	40 ft
Dist to Sev. Impact Contour (Source 1):	18 ft

Source 1 Results

Leq(day):	53.7 dBA
Leq(night):	53.1 dBA
Ldn:	59.6 dBA

Project: LAX Master Plan EIS
Receiver: Receiver 6 -Rebaussance Hotel

Source	Distance	Project Ldn	Existing Ldn	Noise Criteria		Impact?
				Mod. Impact	Sev. Impact	
1 Automated Guideway Trans	60 ft	59.6 dBA	67 dBA	62 dBA	67 dBA	None
2 --	50 ft		67 dBA	62 dBA	67 dBA	
3 --	ft		67 dBA	62 dBA	67 dBA	
4 --	ft		67 dBA	62 dBA	67 dBA	
5 --	ft		67 dBA	62 dBA	67 dBA	
6 --	ft		67 dBA	62 dBA	67 dBA	
Combined Sources		60 dBA	67 dBA	62 dBA	67 dBA	None

Federal Transit Administration
 Noise Impact Assessment Spreadsheet
 Copyright 2007 HMMH Inc.
 version: 7/3/2007

Project:	LAX Master Plan EIS
-----------------	---------------------

Receiver Parameters	
Receiver:	Receiver 7 - Four Points Shearaton
Land Use Category:	2. Residential
Existing Noise (Measured or Generic Value):	67 dBA

Noise Source Parameters	
Number of Noise Sources:	1

Noise Source Parameters		Source 1
	Source Type:	Fixed Guideway
	Specific Source:	Automated Guideway Transit /Steel Wheel
Daytime hrs	Avg. Number of vehicles/train	4
	Speed (mph)	35
	Avg. Number of Events/hr	9
Nighttime hrs	Avg. Number of vehicles/train	4
	Speed (mph)	40
	Avg. Number of Events/hr	6
Distance	Distance from Source to Receiver (ft)	35
	Number of Intervening Rows of Buildings	0
Adjustments	Noise Barrier?	No

Project Results Summary

Existing Ldn:	67 dBA
Total Project Ldn:	63 dBA
Total Noise Exposure:	68 dBA
Increase:	1 dB
Impact?:	Moderate

Distance to Impact Contours

Dist to Mod. Impact Contour (Source 1):	40 ft
Dist to Sev. Impact Contour (Source 1):	18 ft

Source 1 Results

Leq(day):	57.2 dBA
Leq(night):	56.6 dBA
Ldn:	63.1 dBA

Project: LAX Master Plan EIS
 Receiver: Receiver 7 - Four Points Shearaton

Source	Distance	Project Ldn	Existing Ldn	Noise Criteria		Impact?
				Mod. Impact	Sev. Impact	
1 Automated Guideway Trans	35 ft	63.1 dBA	67 dBA	62 dBA	67 dBA	Moderate Impact
2 --	50 ft		67 dBA	62 dBA	67 dBA	
3 --	ft		67 dBA	62 dBA	67 dBA	
4 --	ft		67 dBA	62 dBA	67 dBA	
5 --	ft		67 dBA	62 dBA	67 dBA	
6 --	ft		67 dBA	62 dBA	67 dBA	
Combined Sources		63 dBA	67 dBA	62 dBA	67 dBA	Moderate Impact

Federal Transit Administration
 Noise Impact Assessment Spreadsheet
 Copyright 2007 HMMH Inc.
 version: 7/3/2007

Project:	LAX Master Plan EIS
-----------------	---------------------

Receiver Parameters	
Receiver:	Receiver 8-Marritot Hotel
Land Use Category:	2. Residential
Existing Noise (Measured or Generic Value):	69 dBA

Noise Source Parameters	
Number of Noise Sources:	1

Noise Source Parameters		Source 1
	Source Type:	Fixed Guideway
	Specific Source:	Automated Guideway Transit /Steel Wheel
Daytime hrs	Avg. Number of vehicles/train	4
	Speed (mph)	35
	Avg. Number of Events/hr	9
Nighttime hrs	Avg. Number of vehicles/train	4
	Speed (mph)	40
	Avg. Number of Events/hr	6
Distance	Distance from Source to Receiver (ft)	391
	Number of Intervening Rows of Buildings	1
Adjustments	Noise Barrier?	No

Project Results Summary

Existing Ldn:	69 dBA
Total Project Ldn:	43 dBA
Total Noise Exposure:	69 dBA
Increase:	0 dB
Impact?:	None

Distance to Impact Contours

Dist to Mod. Impact Contour (Source 1):	32 ft
Dist to Sev. Impact Contour (Source 1):	15 ft

Source 1 Results

Leq(day):	37.0 dBA
Leq(night):	36.4 dBA
Ldn:	42.9 dBA

Project: LAX Master Plan EIS
Receiver: Receiver 8-Marritot Hotel

Source	Distance	Project Ldn	Existing Ldn	Noise Criteria		Impact?
				Mod. Impact	Sev. Impact	
1 Automated Guideway Trans	391 ft	42.9 dBA	69 dBA	64 dBA	69 dBA	None
2 --	50 ft		69 dBA	64 dBA	69 dBA	
3 --	ft		69 dBA	64 dBA	69 dBA	
4 --	ft		69 dBA	64 dBA	69 dBA	
5 --	ft		69 dBA	64 dBA	69 dBA	
6 --	ft		69 dBA	64 dBA	69 dBA	
Combined Sources		43 dBA	69 dBA	64 dBA	69 dBA	None

Federal Transit Administration
 Noise Impact Assessment Spreadsheet
 Copyright 2007 HMMH Inc.
 version: 7/3/2007

Project:	LAX Master Plan EIS
-----------------	----------------------------

Receiver Parameters	
Receiver:	Receiver 9 - Hilton Hotel
Land Use Category:	2. Residential
Existing Noise (Measured or Generic Value):	70 dBA

Noise Source Parameters	
Number of Noise Sources:	1

Noise Source Parameters		Source 1
	Source Type:	Fixed Guideway
	Specific Source:	Automated Guideway Transit /Steel Wheel
Daytime hrs	Avg. Number of vehicles/train	4
	Speed (mph)	35
	Avg. Number of Events/hr	9
Nighttime hrs	Avg. Number of vehicles/train	4
	Speed (mph)	40
	Avg. Number of Events/hr	6
Distance	Distance from Source to Receiver (ft)	21
	Number of Intervening Rows of Buildings	0
Adjustments	Noise Barrier?	No

Project Results Summary

Existing Ldn:	70 dBA
Total Project Ldn:	66 dBA
Total Noise Exposure:	72 dBA
Increase:	2 dB
Impact?:	Moderate

Distance to Impact Contours

Dist to Mod. Impact Contour (Source 1):	29 ft
Dist to Sev. Impact Contour (Source 1):	13 ft

Source 1 Results

Leq(day):	60.5 dBA
Leq(night):	59.9 dBA
Ldn:	66.4 dBA

Project: LAX Master Plan EIS
Receiver: Receiver 9 - Hilton Hotel

Source	Distance	Project Ldn	Existing Ldn	Noise Criteria		Impact?
				Mod. Impact	Sev. Impact	
1 Automated Guideway Trans	21 ft	66.4 dBA	70 dBA	64 dBA	69 dBA	Moderate Impact
2 --	50 ft		70 dBA	64 dBA	69 dBA	
3 --	ft		70 dBA	64 dBA	69 dBA	
4 --	ft		70 dBA	64 dBA	69 dBA	
5 --	ft		70 dBA	64 dBA	69 dBA	
6 --	ft		70 dBA	64 dBA	69 dBA	
Combined Sources		66 dBA	70 dBA	64 dBA	69 dBA	Moderate Impact

Federal Transit Administration
 Noise Impact Assessment Spreadsheet
 Copyright 2007 HMMH Inc.
 version: 7/3/2007

Project:	LAX Master Plan EIS
-----------------	---------------------

Receiver Parameters	
Receiver:	Receiver 10-Westin Hotel
Land Use Category:	2. Residential
Existing Noise (Measured or Generic Value):	70 dBA

Noise Source Parameters	
Number of Noise Sources:	1

Noise Source Parameters		Source 1
	Source Type:	Fixed Guideway
	Specific Source:	Automated Guideway Transit /Steel Wheel
Daytime hrs	Avg. Number of vehicles/train	4
	Speed (mph)	35
	Avg. Number of Events/hr	9
Nighttime hrs	Avg. Number of vehicles/train	4
	Speed (mph)	40
	Avg. Number of Events/hr	6
Distance	Distance from Source to Receiver (ft)	1661
	Number of Intervening Rows of Buildings	1
Adjustments	Noise Barrier?	No

Project Results Summary

Existing Ldn:	70 dBA
Total Project Ldn:	33 dBA
Total Noise Exposure:	70 dBA
Increase:	0 dB
Impact?:	None

Distance to Impact Contours

Dist to Mod. Impact Contour (Source 1):	29 ft
Dist to Sev. Impact Contour (Source 1):	13 ft

Source 1 Results

Leq(day):	27.5 dBA
Leq(night):	26.9 dBA
Ldn:	33.4 dBA

Project: LAX Master Plan EIS
Receiver: Receiver 10-Westin Hotel

Source	Distance	Project Ldn	Existing Ldn	Noise Criteria		Impact?
				Mod. Impact	Sev. Impact	
1 Automated Guideway Trans	1661 ft	33.4 dBA	70 dBA	64 dBA	69 dBA	None
2 --	50 ft		70 dBA	64 dBA	69 dBA	
3 --	ft		70 dBA	64 dBA	69 dBA	
4 --	ft		70 dBA	64 dBA	69 dBA	
5 --	ft		70 dBA	64 dBA	69 dBA	
6 --	ft		70 dBA	64 dBA	69 dBA	
Combined Sources		33 dBA	70 dBA	64 dBA	69 dBA	None