



*Los Angeles
World Airports*

**LAX SPECIFIC PLAN
AVIATION ACTIVITY ANALYSIS
REPORT
CY 2012**

Submitted April 2013

**Los Angeles International Airport Specific Plan
LAX Specific Plan Compliance Review
Aviation Activity Analysis
January - December 2012**

Purpose of This Study

Per Section 7 Subsection G.1(b), Monitoring and Reporting, of the Los Angeles International Airport Specific Plan, Los Angeles World Airports (LAWA) is required to prepare and submit an annual Aviation Activity Analysis Report to the Board of Airport Commissioners, the Department of City Planning, Los Angeles Department of Transportation, and the City Council. This report is to include an “analysis that identifies the current number of passengers, volume of air cargo and aircraft operations served at LAX”. The report is also to “compile aviation activity statistics for other airports in the Los Angeles region for monitoring and reporting purposes.” This Aviation Activity Analysis Report has been updated for the calendar year 2012.

Summary and Conclusions

An analysis of LAX and regional air traffic activity for January through December 2012 led to the following conclusions:

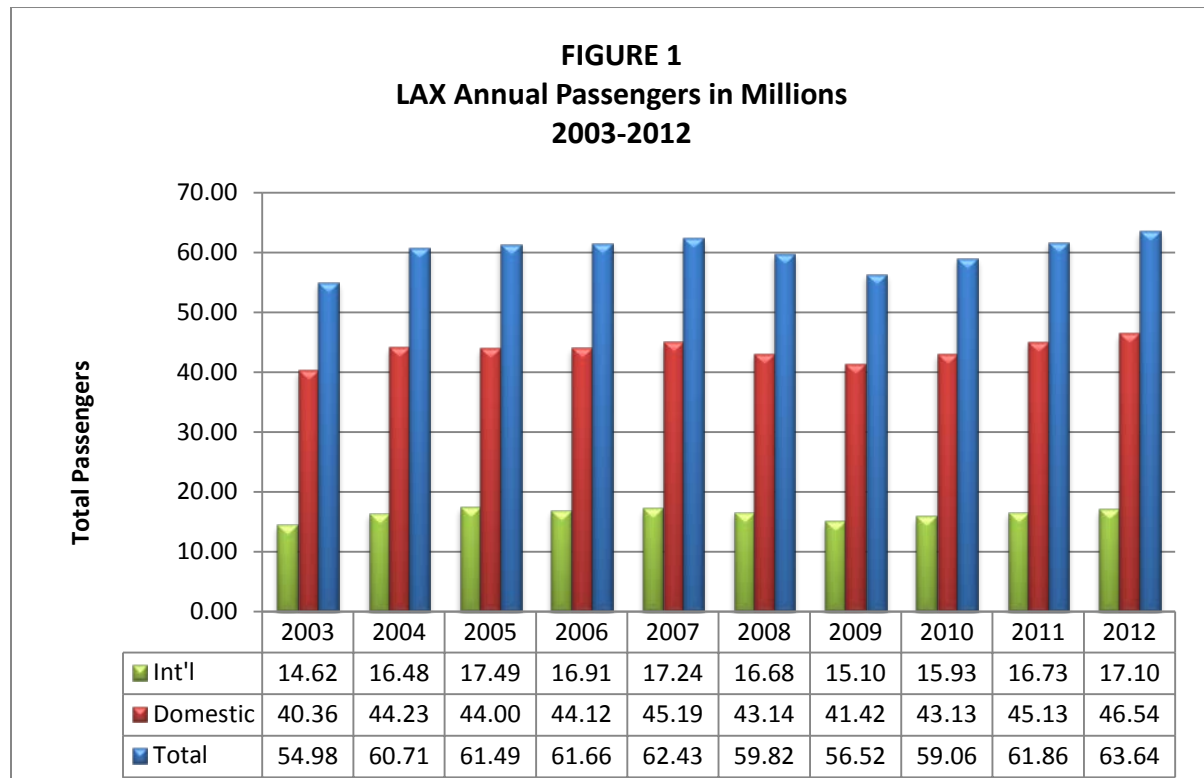
- Passenger volume at LAX totaled approximately 63.68 Million Annual Passengers (MAP) in 2012, a 2.95% increase compared to the previous year. Cargo volume at LAX totaled 1.96 million tons in 2012, a 5% increase compared to 2011.
- Commercial aircraft operations (landings and takeoffs) at LAX increased about 0.33% in 2012 to 597,944 from 595,989 operations in 2011.
- LAX handled 74.19% of the regional passenger traffic in 2012. There was no substantial change in the distribution of passengers among the regional airports as compared to the previous year. The share of passenger traffic handled by other regional airports has increased by 4.49% during the 10-year period of 2003 to 2012.
- LAX was the sixth busiest airport in the world and the third busiest in the United States for passenger traffic in calendar year 2011.

LAX Air Traffic Activity

LAWA reports air traffic activity on a monthly basis throughout the year. Reports are posted each month on the LAWA web site (www.lawa.org). The attached reports entitled "Traffic Comparison Report (TCOM)" and "Volume of Air Traffic (VOAT)" provides passenger, cargo and aircraft operations activity statistics for Los Angeles International Airport for the Calendar Year 2012.

LAX Passenger Volume

As shown in the attached reports, passenger volume totaled approximately 63.7 Million Annual Passengers (MAP) in 2012, a 2.95% increase compared to the previous year. LAX passenger volume reached its peak in 2000 at 67.3 MAP. LAX passenger levels in 2012 remained about 3.61 MAP below peak 2000 levels.

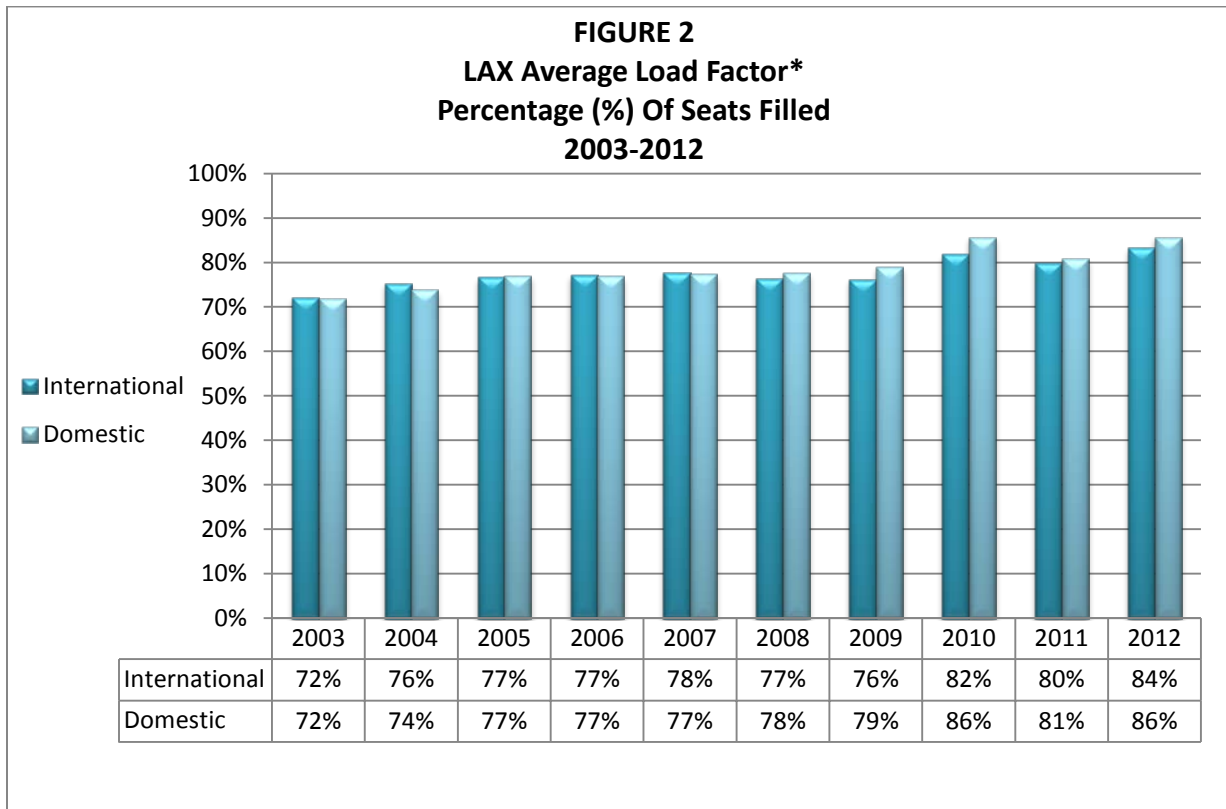


Data Source: RAMS

In 2012, international passengers increased to approximately 17.15 MAP a 2.46% increase over the previous year 2011. The percentage share of international passengers has increased slightly over the last 10 years from approximately 26.37% in 2003 to approximately 26.93% in 2012.

LAX Load Factor

Load factor is the percentage of seats filled per aircraft. Average Load Factor (ALF) includes LAX’s entire operations for the calendar year. Figure 2 - “LAX Average Load Factor 2003-2012,” below shows the change in ALF at LAX since 2003. LAX ALF increased to 85% in 2012.

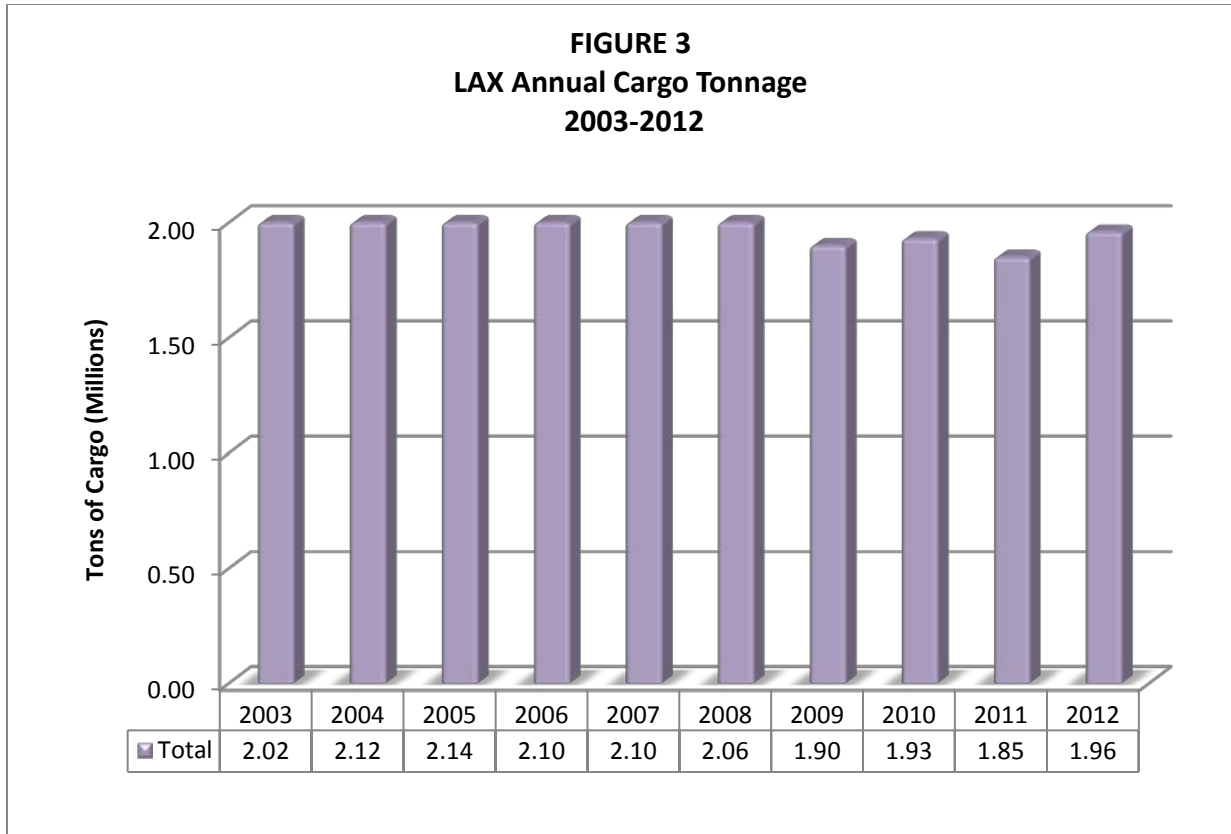


*Percentages are rounded up

Data Source: T-100 DOT Reports

LAX Cargo Volume

As shown on the attached TCOM and VOAT reports, total cargo volume in Calendar Year 2012 totaled 1.96 Million Annual Tons, a 5% increase from the previous year 2011. International cargo accounted for approximately 32.40% of total cargo volume. Figure 3 – “LAX Annual Cargo Tonnage 2003-2012” shows historical cargo volumes for LAX between 2003 and 2012.

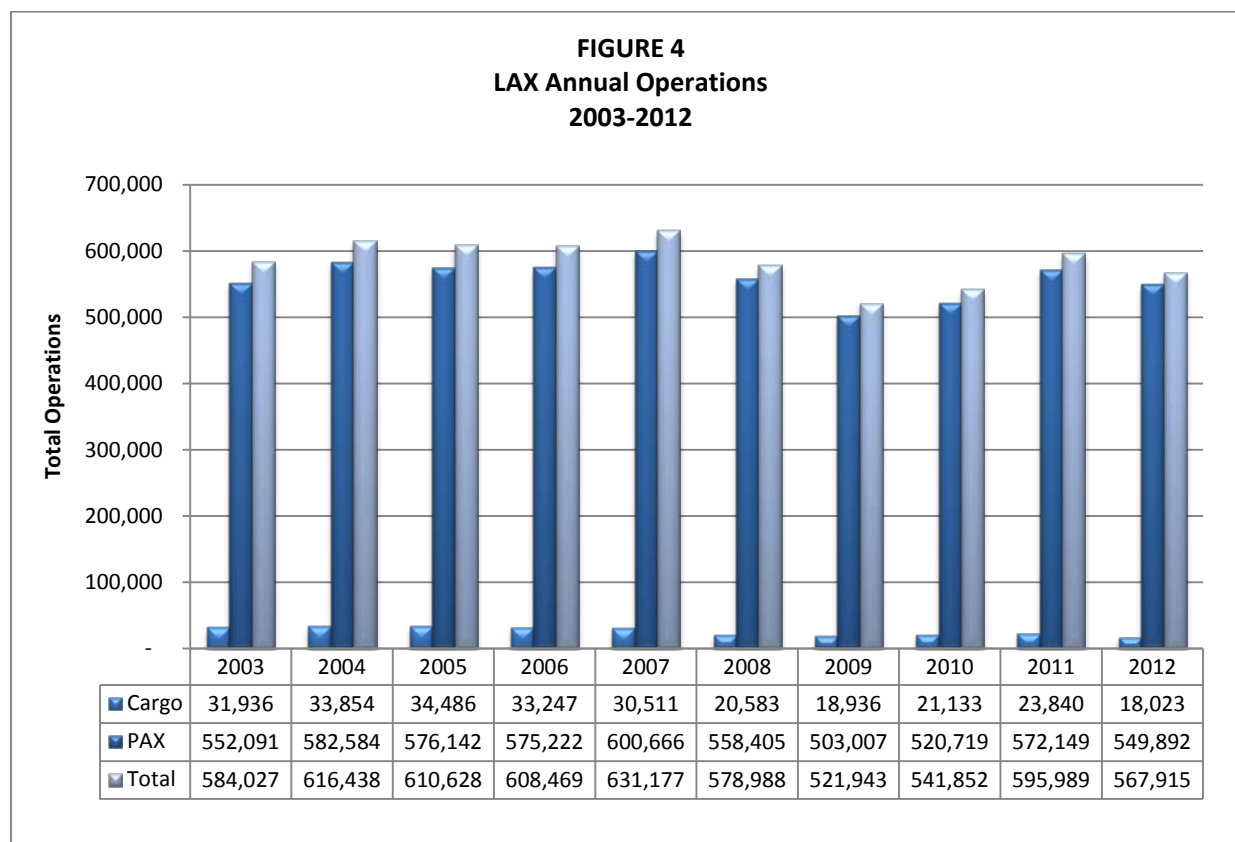


Data Source: RAMS

LAX Commercial Aircraft Operations

The number of commercial aircraft operations (landings and takeoffs). Commercial operations totaled 597,944 in 2012, slightly higher than the 595,989 commercial operations in 2011. The number of aircraft operations in 2012 was .33% higher than in 2011.

Passenger operations over the last ten years since 2003 have decreased 2.6% compared to a 13.34% increase in passenger volume. The difference is best explained by the increasing load factors that have occurred at LAX and industry wide. The average number of passengers per passenger operation at LAX increased from 108 in 2011 to 115 in 2012. *Figure 4 - "LAX Annual Operations 2003-2012"* shows the change in operations at LAX between 2003 and 2012.



Data Source: RAMS

LAX Fleet Mix

The fleet mix or types of aircraft used at LAX changes as airlines seek to match aircraft size to markets and lower operating costs over their route system. As shown on *Figure 5 - "LAX – Passenger Operations Fleet Mix Percentage 2003-2012"*, the percentage of regional jets in the fleet increased dramatically from 2003 through 2012 with regional jets comprising less than 1% of scheduled operations at LAX in 2000 and 28% in 2012. The share of turboprop aircraft has continued to decline significantly since 2003. In 2003, nearly 25% of LAX passenger operations were turboprop aircraft compared to about 3% in 2012.

The share of wide body and jumbo jet passenger operations of all passenger operations at LAX increased between 2000 and 2002, reaching a peak at nearly 17%. The share has since slightly decreased to approximately 16% of the total in 2012. The share of narrow body aircraft operations in 2012 was slightly lower than in 2011: approximately 53.92% in 2012 compared to 53.16% in 2011. Narrow body aircraft continue to dominate the fleet at LAX. *"Table 1 – LAX Fleet Mix Jet Types"* defines each jet type in the LAX fleet.

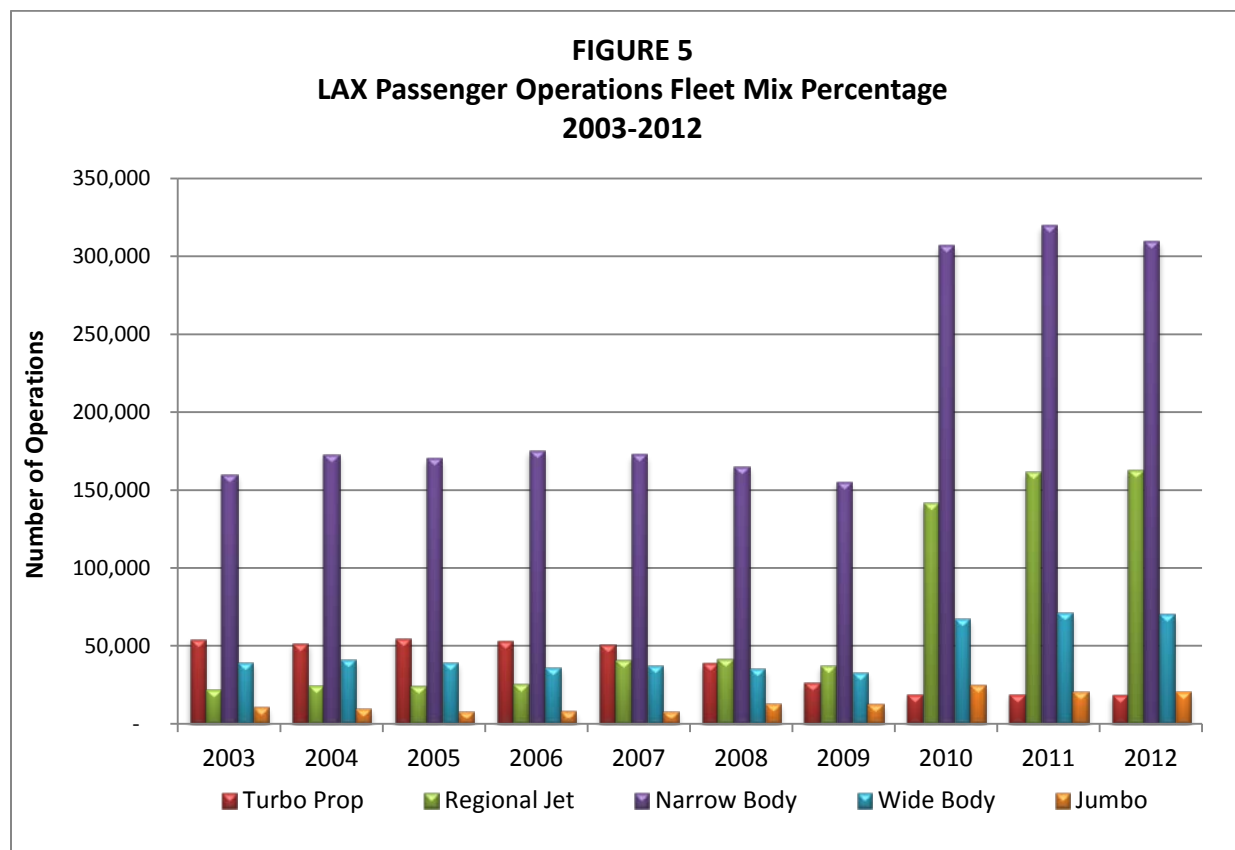


TABLE 1 LAX Fleet Mix Jet Types	
Turbo Prop	aircraft powered by turbine engines that utilize propellers to fly
Regional Jet	aircraft configured with 30 to 90 seats powered by jet turbofan engines
Narrowbody Jet	aircraft configured with 91 to 225 seats powered by jet turbofan engines
Widebody Jet	aircraft configured with 226 seats to 322 seats powered by jet turbofan engines
Jumbo Jet	aircraft configured with 323 seats and higher powered by jet turbofan engines

Aviation Activity in the Los Angeles Region

There are six primary commercial airports in the six-county Southern California region. These airports in total served approximately 85.84 Million Annual Passengers and approximately 2.2 Million Annual Tons of air cargo in 2012. Together, they generated approximately 1.29 million take-offs and landings of commercial and private aircraft.

The Southern California Association of Governments (SCAG) collects and reports passenger, cargo and operations activity for commercial airports within the SCAG five county area. The latest reports are attached. In 2012, regional passenger volume increased 2.3% compared to 2011. *Table 2 "Aviation Activity SCAG Region Air Carrier Airports"* below summarizes the 2012 passengers, cargo, air carrier, and operations totals by airport.

TABLE 2 Aviation Activity SCAG Region Air Carrier Airports 2012				
Airport	Passengers	Cargo (Tons)	Air Carrier	Total Operations
Bob Hope	4,056,416	51,862	52,352	135,138
John Wayne	8,857,944	15,569	79,658	252,943
LAX	63,688,121	1,663,855	438,059	544,833
Long Beach	3,205,907	24,471	27,510	254,663
Ontario	4,305,426	454,880	54,315	45,106
Palm Springs	1,727,122	119,202	11,856	58,098
Total	85,840,936	2,210,637	663,750	1,290,781

Table 3 “Aviation Activity Percentage Share SCAG Region Air Carrier Airport” shows the percentage share of total regional aviation activity handled by each airport in 2012 in the areas of passengers, cargo, air carrier, and total operations.

TABLE 3 Aviation Activity Percentage Share SCAG Region Air Carrier Airports 2012				
Airport	Passengers	Cargo	Air Carrier	Total Operations
Bob Hope	4.73%	2.35%	7.89%	10.47%
John Wayne	10.32%	0.70%	12.00%	19.60%
LAX	74.19%	75.27%	66.00%	42.21%
Long Beach	3.73%	1.11%	4.14%	19.73%
Ontario	5.02%	20.58%	8.18%	3.49%
Palm Springs	2.01%	5.12%	1.79%	4.50%
Total	100.00%	100.00%	100.00%	100.00%

Table 4 - "Airport Share of Regional Passenger Traffic SCAG Region Air Carrier Airports 1996-2012" shows the airport share of regional passenger traffic.

TABLE 4 Airport Share of Regional Passenger Traffic SCAG Region Air Carrier Airports 1996-2012							
	Los Angeles (LAX)	Ontario (ONT)	Long Beach (LGB)	John Wayne (SNA)	Burbank (BUR)	Palm Sprin gs (PSP)	Regional Total
1996	74.40%	8.00%	0.60%	9.40%	6.20%	1.40%	100.00%
1997	74.60%	7.80%	0.80%	9.60%	5.80%	1.50%	100.00%
1998	74.90%	7.90%	0.80%	9.10%	5.80%	1.50%	100.00%
1999	75.40%	7.70%	1.00%	8.80%	5.60%	1.50%	100.00%
2000	76.10%	7.60%	0.70%	8.80%	5.30%	1.40%	100.00%
2001	75.20%	8.20%	0.70%	8.90%	5.50%	1.40%	100.00%
2002	72.20%	8.40%	1.90%	10.20%	5.90%	1.40%	100.00%
2003	69.70%	8.30%	3.60%	10.80%	6.00%	1.60%	100.00%
2004	70.50%	8.10%	3.40%	10.80%	5.70%	1.60%	100.00%
2005	69.60%	8.20%	3.40%	10.90%	6.20%	1.60%	100.00%
2006	69.60%	8.00%	3.10%	11.00%	6.50%	1.70%	100.00%
2007	69.30%	8.00%	3.20%	11.10%	6.60%	1.80%	100.00%
2008	70.50%	7.30%	3.40%	10.60%	6.30%	1.80%	100.00%
2009	71.47%	6.18%	3.68%	11.01%	5.80%	1.85%	100.00%
2010	72.50%	5.91%	3.66%	10.63%	5.48%	1.83%	100.00%
2011	73.69%	5.42%	3.71%	10.25%	5.12%	1.80%	100.00%
2012	74.19%	5.02%	3.73%	10.32%	4.73%	2.01%	100.00%

**Los Angeles World Airports (LAWA)
Traffic Comparison (TCOM)
Los Angeles International Airport
Calendar YTD January to December**

	Dec-2012	Dec-2011	<u>% Change</u>	Jan-2012 to Dec-2012	Jan-2011 to Dec-2011	<u>% Change</u>
<u>Passenger Traffic Totals</u>						
Domestic	3,863,784	3,638,344	6.20 %	46,535,207	45,130,728	3.11 %
International	1,414,729	1,390,300	1.76 %	17,152,914	16,731,324	2.52 %
Total	5,278,513	5,028,644	4.97 %	63,688,121	61,862,052	2.95 %
<u>Domestic Passengers</u>						
Scheduled Carriers	3,616,388	3,284,686	10.10 %	41,915,348	39,935,050	4.96 %
Commuter Carriers	243,445	348,923	-30.23 %	4,597,334	5,175,693	-11.17 %
Charter Carriers	3,951	4,735	-16.56 %	22,525	19,985	12.71 %
Total	3,863,784	3,638,344	6.20 %	46,535,207	45,130,728	3.11 %
<u>International Passengers</u>						
Tom Bradley Intl	680,111	686,089	-0.87 %	8,587,838	8,564,341	0.27 %
Terminal 2	365,565	378,756	-3.48 %	4,612,636	4,579,516	0.72 %
Terminal 7	129,561	67,260	92.63 %	1,137,801	754,101	50.88 %
Terminal 6	89,288	30,898	188.98 %	950,189	414,035	129.49 %
Terminal 5	70,051	64,455	8.68 %	686,665	487,639	40.81 %
All Other Terminals	80,153	162,842	-50.78 %	1,177,785	1,931,692	-39.03 %
Total	1,414,729	1,390,300	1.76 %	17,152,914	16,731,324	2.52 %
<u>US Customs Arrivals by Terminal</u>						
Tom Bradley Intl	383,247	414,980	-7.65 %	5,004,371	5,322,245	-5.97 %
Terminal 2	139,995	144,215	-2.93 %	1,766,655	1,750,859	0.90 %
Terminal 7	93,838	43,923	113.64 %	863,905	591,741	45.99 %
Terminal 5	44,167	40,996	7.73 %	492,948	195,321	152.38 %
Terminal 4	19,469	15,095	28.98 %	164,344	176,861	-7.08 %
All Other Terminals	0	0	0.00 %	0	0	0.00 %
Total	680,716	659,209	3.26 %	8,292,223	8,037,027	3.18 %
<u>Air Cargo (Tons)</u>						
Mail	8,157	9,105	-10.41 %	96,779	80,442	20.31 %
Freight	160,415	154,642	3.73 %	1,866,432	1,789,204	4.32 %
Total	168,572	163,748	2.95 %	1,963,210	1,869,646	5.00 %
<u>FAA Aircraft Movement</u>						
Air Carrier	39,722	39,800	-0.20 %	481,338	473,282	1.70 %
Air Taxi	8,034	9,387	-14.41 %	103,159	109,885	-6.12 %
General Aviation	1,478	1,496	-1.20 %	18,334	18,355	-0.11 %
Military	163	195	-16.41 %	2,649	2,390	10.84 %
Total	49,397	50,878	-2.91 %	605,480	603,912	0.26 %

**Los Angeles World Airports (LAWA)
Volume of Air Traffic (VOAT)
Los Angeles International Airport**

	December 2012			Calendar YTD January to December 2012		
	<i>Domestic</i>	<i>International</i>	<i>Total</i>	<i>Domestic</i>	<i>International</i>	<i>Total</i>
<u>Passenger Traffic Totals</u>						
Scheduled Carriers						
Departures	1,814,161	719,627	2,533,788	20,976,260	8,568,881	29,545,141
Arrivals	1,802,227	689,758	2,491,985	20,939,088	8,534,245	29,473,333
Total	3,616,388	1,409,385	5,025,773	41,915,348	17,103,126	59,018,474
Scheduled Commuters						
Departures	121,010	2,489	123,499	2,274,392	22,315	2,296,707
Arrivals	122,435	2,257	124,692	2,322,942	21,621	2,344,563
Total	243,445	4,746	248,191	4,597,334	43,936	4,641,270
Charter						
Departures	1,344	66	1,410	12,554	2,733	15,287
Arrivals	2,607	532	3,139	9,971	3,119	13,090
Total	3,951	598	4,549	22,525	5,852	28,377
Grand Total	3,863,784	1,414,729	5,278,513	46,535,207	17,152,914	63,688,121
<u>Air Cargo (Tons)</u>						
Cargo figures may not add up due to rounding						
Freight						
Departure	37,423	38,330	75,753	403,404	487,958	891,362
Arrival	34,854	49,808	84,662	365,955	609,114	975,070
Total	72,277	88,138	160,415	769,359	1,097,072	1,866,432
Mail						
Departure	1,618	2,022	3,641	32,632	25,913	58,545
Arrival	1,197	3,319	4,516	25,414	12,820	38,234
Total	2,815	5,342	8,157	58,046	38,733	96,779
Grand Total	75,092	93,480	168,572	827,405	1,135,805	1,963,210
<u>Flight Operations (excludes cargo operations)</u>						
Scheduled						
Departures	15,208	3,690	18,898	168,507	44,337	212,844
Arrivals	15,167	3,702	18,869	168,622	44,309	212,931
Total	30,375	7,392	37,767	337,129	88,646	425,775
Commuter						
Departures	3,450	41	3,491	61,358	376	61,734
Arrivals	3,450	41	3,491	61,354	376	61,730
Total	6,900	82	6,982	122,712	752	123,464
Charter						
Departures	28	4	32	295	44	339
Arrivals	31	8	39	252	62	314
Total	59	12	71	547	106	653
Grand Total	37,334	7,486	44,820	460,388	89,504	549,892

**Los Angeles World Airports (LAWA)
Passenger Traffic Comparison by Terminal
Los Angeles International Airport**

	December 2012			Calendar YTD January to December 2012		
	<u>Domestic</u>	<u>International</u>	<u>Total</u>	<u>Domestic</u>	<u>International</u>	<u>Total</u>
Imperial Terminal						
Departure	0	0	0	658	230	888
Arrival	159	0	159	159	0	159
Total	159	0	159	817	230	1,047
Terminal 1						
Departure	381,086	0	381,086	4,702,110	0	4,702,110
Arrival	388,094	0	388,094	4,733,444	0	4,733,444
Total	769,180	0	769,180	9,435,554	0	9,435,554
Terminal 2						
Departure	31,177	187,853	219,030	337,232	2,344,386	2,681,618
Arrival	30,594	177,712	208,306	343,493	2,268,250	2,611,743
Total	61,771	365,565	427,336	680,725	4,612,636	5,293,361
Terminal 3						
Departure	176,627	19,740	196,367	2,326,457	381,990	2,708,447
Arrival	174,198	0	174,198	2,304,306	40,570	2,344,876
Total	350,825	19,740	370,565	4,630,763	422,560	5,053,323
Terminal 4						
Departure	375,478	34,930	410,408	5,089,059	462,178	5,551,237
Arrival	376,023	20,730	396,753	5,113,134	204,766	5,317,900
Total	751,501	55,660	807,161	10,202,193	666,944	10,869,137
Terminal 5						
Departure	232,067	30,456	262,523	3,062,134	268,775	3,330,909
Arrival	243,040	39,595	282,635	3,063,914	417,890	3,481,804
Total	475,107	70,051	545,158	6,126,048	686,665	6,812,713
Terminal 6						
Departure	304,804	70,970	375,774	3,617,108	724,784	4,341,892
Arrival	302,395	18,318	320,713	3,698,113	225,405	3,923,518
Total	607,199	89,288	696,487	7,315,221	950,189	8,265,410
Terminal 7						
Departure	245,171	47,842	293,013	2,290,900	421,333	2,712,233
Arrival	220,914	81,719	302,633	2,175,869	716,468	2,892,337
Total	466,085	129,561	595,646	4,466,769	1,137,801	5,604,570
Terminal 8						
Departure	131,603	2,489	134,092	1,672,783	65,776	1,738,559
Arrival	131,821	2,257	134,078	1,697,255	21,621	1,718,876
Total	263,424	4,746	268,170	3,370,038	87,397	3,457,435
Misc. Terminal						
Departure	49,949	0	49,949	79,691	209	79,900
Arrival	52,361	7	52,368	82,522	445	82,967
Total	102,310	7	102,317	162,213	654	162,867
Tom Bradley Intl						
Departure	8,553	327,902	336,455	85,074	3,924,268	4,009,342
Arrival	7,670	352,209	359,879	59,792	4,663,570	4,723,362
Total	16,223	680,111	696,334	144,866	8,587,838	8,732,704
Grand Total	3,863,784	1,414,729	5,278,513	46,535,207	17,152,914	63,688,121

Regional Data Statistics

SCAG Region

YEAR	PASSENGERS*	CHANGE (%)	CARGO (TONS)	CHANGE (%)	OPERATIONS**	CHANGE (%)
2000	88,501		2,870,401		1,963,067	
2001	81,883	-7.48%	2,512,672	-12.46%	1,888,822	-3.78%
2002	77,828	-4.95%	2,627,239	4.56%	1,780,612	-5.73%
2003	78,919	1.40%	2,712,971	3.26%	1,727,869	-2.96%
2004	86,124	9.13%	2,847,463	4.96%	1,762,086	1.98%
2005	88,296	2.52%	2,845,292	-0.08%	1,725,312	-2.09%
2006	87,681	-0.70%	2,779,131	-2.33%	1,735,827	0.61%
2007	90,063	2.72%	2,738,128	-1.48%	1,766,667	1.78%
2008	84,826	-5.81%	2,384,399	-12.92%	1,545,360	-12.53%
2009	79,076	-6.78%	2,149,218	-9.86%	1,338,650	-13.38%

Does not include Palmdale

*In Thousands

**Provided Below

OPERATIONS

YEAR	AIR CARRIER	CHANGE (%)	AIR TAXI	CHANGE (%)	GENERAL AVIATION	CHANGE (%)	MILITARY	CHANGE (%)	TOTAL	CHANGE (%)
2000	825,707		302,111		799,865		5,384		1,933,067	
2001	778,939	-5.66%	292,092	-3.32%	811,157	1.41%	4,315	-24.77%	1,886,503	-2.41%
2002	709,274	-8.94%	270,854	-7.27%	796,059	-1.86%	4,425	2.49%	1,780,612	-5.61%
2003	703,631	-0.80%	273,114	0.83%	745,936	-6.30%	5,188	14.71%	1,727,869	-2.96%
2004	735,603	4.54%	283,039	3.63%	735,888	-1.35%	5,392	3.78%	1,759,922	1.86%
2005	738,641	0.41%	275,945	-2.51%	706,035	-4.06%	4,691	-14.94%	1,725,312	-1.97%
2006	748,178	1.29%	272,501	-1.25%	710,056	0.57%	5,092	7.88%	1,735,827	0.61%
2007	756,946	1.17%	300,174	10.16%	704,401	-0.80%	5,146	1.05%	1,766,667	1.78%
2008	722,109	-4.60%	238,997	-20.38%	579,805	-17.69%	4,449	-15.67%	1,545,360	-12.53%
2009	691,375	-4.26%	155,318	-35.01%	486,101	-16.16%	5,856	24.03%	1,338,649	-13.38%

Regional Data Statistics

LOS ANGELES INTERNATIONAL AIRPORT (LAX)

PASSENGERS	CHANGE (%)	CARGO (TONS)	CHANGE (%)	OPERATIONS*	CHANGE (%)
67,303,182	4.70%	2,249,152	5.19%	783,433	0.55%
61,606,253	-8.46%	1,941,694	-13.67%	738,433	-5.74%
56,223,843	-8.74%	1,962,354	1.06%	645,424	-12.60%
54,982,838	-2.21%	2,022,076	3.04%	622,378	-3.57%
60,704,568	10.41%	2,115,313	4.61%	655,097	5.26%
61,489,523	1.29%	2,137,188	1.03%	650,629	-0.68%
61,041,066	-0.73%	2,103,082	-1.60%	656,842	0.95%
62,438,583	2.29%	2,077,527	-1.22%	680,954	3.67%
59,815,646	-4.20%	1,796,543	-13.52%	622,506	-8.58%
56,520,843	-5.51%	1,663,855	-7.39%	544,833	-12.48%

*Provided Below

OPERATIONS

YEAR	AIR CARRIER	CHANGE (%)	AIR TAXI	CHANGE (%)	GENERAL AVIATION	CHANGE (%)	MILITARY	CHANGE (%)	TOTAL	CHANGE (%)
2000	565,805	4.38%	198,306	-8.14%	17,018	-8.19%	2,304	-12.93%	783,433	-17.74%
2001	524,014	-7.39%	193,892	-2.23%	16,156	-5.07%	2,052	-12.28%	736,114	-6.04%
2002	449,712	-14.18%	177,123	-8.65%	16,474	1.97%	2,115	2.98%	645,424	-12.32%
2003	433,370	-3.63%	171,199	-3.34%	15,248	-7.44%	2,561	17.42%	622,378	-3.57%
2004	458,774	5.86%	179,262	4.71%	14,059	-7.80%	3,002	14.69%	655,097	5.26%
2005	454,934	-0.84%	178,017	-0.69%	15,071	7.20%	2,607	-15.15%	650,629	-0.68%
2006	463,341	1.85%	174,745	-1.84%	16,142	7.11%	2,614	0.27%	656,842	0.95%
2007	467,193	0.83%	193,930	10.98%	17,217	6.66%	2,614	0.00%	680,954	3.67%
2008	453,232	-2.99%	150,561	-22.36%	16,397	-4.76%	2,316	-12.87%	622,506	-8.58%
2009	438,059	-3.35%	86,919	-42.27%	16,797	2.44%	3,058	24.26%	544,833	-12.48%

Regional Data Statistics

BOB HOPE AIRPORT (BUR)

YEAR	PASSENGERS	CHANGE (%)	CARGO (TONS)	CHANGE (%)	OPERATIONS*	CHANGE (%)
2000	4,748,742	0.27%	37,036	-11.53%	160,769	-8.12%
2001	4,487,335	-5.50%	34,368	-7.20%	159,705	-0.66%
2002	4,620,683	2.97%	43,089	25.38%	162,211	1.57%
2003	4,729,936	2.36%	47,634	10.55%	178,079	9.78%
2004	4,916,800	3.95%	49,633	4.20%	165,131	-7.27%
2005	5,512,619	12.12%	52,867	6.52%	135,630	-17.87%
2006	5,689,291	3.20%	57,577	8.91%	131,214	-3.26%
2007	5,921,336	4.08%	53,735	-6.67%	123,521	-5.86%
2008	5,331,404	-9.96%	42,900	-20.16%	119,685	-3.11%
2009	4,588,433	-13.94%	44,392	3.48%	109,420	-8.58%

*Provided Below

OPERATIONS

YEAR	AIR CARRIER	CHANGE (%)	AIR TAXI	CHANGE (%)	GENERAL AVIATION	CHANGE (%)	MILITARY	CHANGE (%)	TOTAL	CHANGE (%)
2000	57,612		29,484		43,303		370		130,769	
2001	56,391	-2.12%	28,835	-2.20%	74,111	71.15%	368	-0.54%	159,706	22.13%
2002	56,794	0.71%	28,679	-0.54%	76,385	3.07%	353	-4.25%	162,211	1.57%
2003	58,854	3.63%	27,351	-4.63%	91,571	19.88%	303	-16.50%	178,079	9.78%
2004	59,648	1.35%	27,309	-0.15%	77,874	-14.96%	300	-1.00%	165,131	-7.27%
2005	65,541	9.88%	25,846	-5.36%	44,007	-43.49%	236	-27.12%	135,630	-17.87%
2006	68,642	4.73%	21,275	-17.69%	40,960	-6.92%	337	29.97%	131,214	-3.26%
2007	71,949	4.82%	17,623	-17.17%	33,678	-17.78%	271	-24.35%	123,521	-5.86%
2008	70,682	-1.76%	13,280	-24.64%	35,511	5.44%	212	-27.83%	119,685	-3.11%
2009	65,502	-7.33%	8,907	-32.93%	34,828	-1.92%	183	-15.85%	109,420	-8.58%

Regional Data Statistics

JOHN WAYNE AIRPORT (SNA)

YEAR	PASSENGERS	CHANGE (%)	CARGO (TONS)	CHANGE (%)	OPERATIONS*	CHANGE (%)
2000	7,772,801	4.05%	18,119	-0.92%	387,862	-7.15%
2001	7,324,557	-5.77%	16,146	-10.89%	378,903	-2.31%
2002	7,903,066	7.90%	15,646	-3.10%	368,627	-2.71%
2003	8,535,130	8.00%	15,406	-1.53%	349,124	-5.29%
2004	9,272,394	8.64%	20,152	30.81%	354,597	1.57%
2005	9,627,172	3.83%	24,073	19.46%	349,940	-1.31%
2006	9,613,540	-0.14%	23,903	-0.71%	347,194	-0.78%
2007	9,979,699	3.81%	22,330	-6.58%	331,452	-4.53%
2008	8,989,603	-9.92%	17,383	-22.15%	267,751	-19.22%
2009	8,705,199	-3.16%	15,152	-12.83%	218,157	-18.52%

*Provided Below

OPERATIONS

YEAR	AIR CARRIER	CHANGE (%)	AIR TAXI	CHANGE (%)	GENERAL AVIATION	CHANGE (%)	MILITARY	CHANGE (%)	TOTAL	CHANGE (%)
2000	85,200	1.15%	13,776	58.44%	288,653	-23.77%	233	124.04%	387,862	-17.74%
2001	84,766	-0.51%	9,984	-27.53%	284,019	-1.61%	134	-73.88%	378,903	-2.31%
2002	84,597	-0.20%	9,265	-7.20%	274,603	-3.32%	162	17.28%	368,627	-2.71%
2003	83,927	-0.79%	15,485	67.13%	249,551	-9.12%	161	-0.62%	349,125	-5.29%
2004	87,130	3.82%	16,255	4.97%	248,910	-0.26%	138	-16.67%	352,433	0.95%
2005	87,134	0.00%	15,729	-3.24%	246,920	-0.80%	157	12.10%	349,940	-0.71%
2006	88,157	1.17%	15,847	0.75%	243,061	-1.56%	129	-21.71%	347,194	-0.78%
2007	91,368	3.64%	14,023	-11.51%	225,938	-7.04%	123	-4.88%	331,452	-4.53%
2008	84,090	-7.97%	10,786	-23.08%	172,822	-23.51%	53	-132.08%	267,750	-19.22%
2009	83,527	-0.67%	10,721	-0.60%	123,865	-28.33%	44	-20.45%	218,157	-18.52%

Regional Data Statistics

LONG BEACH AIRPORT (LGB)

YEAR	PASSENGERS	CHANGE (%)	CARGO (TONS)	CHANGE (%)	OPERATIONS*	CHANGE (%)
2000	637,853		54,192		379,399	
2001	587,473	-7.90%	58,357	7.69%	358,508	-5.51%
2002	1,453,551	147.42%	58,607	0.43%	350,603	-2.20%
2003	2,875,703	97.84%	55,850	-4.70%	338,807	-3.36%
2004	2,926,450	1.76%	57,050	2.15%	339,222	0.12%
2005	3,034,032	3.68%	54,298	-4.82%	353,011	4.06%
2006	2,758,362	-9.09%	49,947	-8.01%	369,738	4.74%
2007	2,906,556	5.37%	51,652	3.41%	398,433	7.76%
2008	2,913,926	0.25%	46,263	-10.43%	338,300	-15.09%

*Provided Below

OPERATIONS

YEAR	AIR CARRIER	CHANGE (%)	AIR TAXI	CHANGE (%)	GENERAL AVIATION	CHANGE (%)	MILITARY	CHANGE (%)	TOTAL	CHANGE (%)
2000	12,140		6,111		360,135		1,013		379,399	
2001	9,488	-21.85%	7,378	20.73%	340,897	-5.34%	745	-35.97%	358,508	-5.51%
2002	16,134	70.05%	8,349	13.16%	325,313	-4.57%	807	7.68%	350,604	-2.20%
2003	28,410	76.09%	7,347	-12.00%	302,075	-7.14%	975	17.23%	338,808	-3.36%
2004	28,093	-1.12%	7,383	0.49%	302,938	0.29%	808	-20.67%	339,222	0.12%
2005	28,939	3.01%	6,951	-5.85%	316,503	4.48%	618	-30.74%	353,011	4.06%
2006	25,833	-10.73%	9,431	35.68%	333,824	5.47%	650	4.92%	369,738	4.74%
2007	26,636	3.11%	11,546	22.43%	359,580	7.72%	671	3.13%	398,433	7.76%
2008	27,367	2.74%	12,836	11.17%	297,515	-17.26%	582	-15.29%	338,300	-15.09%

Regional Data Statistics

LOS ANGELES/ONTARIO INTERNATIONAL AIRPORT (ONT)

PASSENGERS	CHANGE (%)	CARGO (TONS)	CHANGE (%)	OPERATIONS*	CHANGE (%)
6,757,398		511,758		155,501	
6,702,400	-0.81%	462,006	-9.72%	154,715	-0.51%
6,516,858	-2.77%	547,461	18.50%	149,292	-3.51%
6,547,877	0.48%	571,892	4.46%	146,413	-1.93%
6,935,713	5.92%	605,211	5.83%	152,870	4.41%
7,213,528	4.01%	576,791	-4.70%	143,249	-6.29%
7,049,904	-2.27%	544,600	-5.58%	136,261	-4.88%
7,207,150	2.23%	532,865	-2.15%	147,678	8.38%
6,232,761	-13.52%	481,284	-9.68%	124,242	-15.87%
4,886,695	-21.60%	390,932	-18.77%	98,332	-20.85%

*Provided Below

OPERATIONS

YEAR	AIR CARRIER	CHANGE (%)	AIR TAXI	CHANGE (%)	GENERAL AVIATION	CHANGE (%)	MILITARY	CHANGE (%)	TOTAL	CHANGE (%)
2000	95,370		28,228		31,469		434		155,501	
2001	96,035	0.70%	24,008	-14.95%	34,386	9.27%	286	-51.75%	154,715	-0.51%
2002	92,977	-3.18%	23,920	-0.37%	32,273	-6.14%	122	-134.43%	149,292	-3.51%
2003	90,809	-2.33%	25,665	7.30%	29,728	-7.89%	211	42.18%	146,413	-1.93%
2004	93,197	2.63%	27,403	6.77%	32,023	7.72%	247	14.57%	152,870	4.41%
2005	92,327	-0.93%	26,090	-4.79%	24,714	-22.82%	118	-109.32%	143,249	-6.29%
2006	91,918	-0.44%	26,244	0.59%	17,996	-27.18%	103	-14.56%	136,261	-4.88%
2007	88,280	-3.96%	38,681	47.39%	20,560	14.25%	157	34.39%	147,679	8.38%
2008	75,407	-14.58%	33,581	-13.18%	15,195	-26.09%	59	-166.10%	124,241	-15.87%
2009	62,668	-16.89%	21,448	-36.13%	14,038	-7.61%	178	66.85%	98,332	-20.85%



Regional Data Statistics

LOS ANGELES/PALMDALE REGIONAL AIRPORT (PMD)

YEAR	PASSENGERS	CHANGE (%)	CARGO (TONS)	CHANGE (%)	OPERATIONS*	CHANGE (%)
2000	-		-		45,121	
2001	-		-		40,053	-11.23%
2002	-		-		33,352	-16.73%
2003	-		-		30,737	-7.84%
2004	-		-		31,108	1.21%
2005	4,877		-		35,238	13.28%
2006	59	-98.79%	-		32,484	-7.82%
2007	12,022	20276.27%	-		34,550	6.36%
2008	21,805	81.38%	-		27,881	-19.30%

*Provided Below

OPERATIONS

YEAR	AIR CARRIER	CHANGE (%)	AIR TAXI	CHANGE (%)	GENERAL AVIATION	CHANGE (%)	MILITARY	CHANGE (%)	TOTAL	CHANGE (%)
2000	294		391		15,671		28,765		45,121	
2001	366	24.49%	404	3.32%	10,554	-32.65%	28,729	-0.13%	40,053	-11.23%
2002	242	-33.88%	246	-39.11%	8,474	-19.71%	24,390	-17.79%	33,351	-16.73%
2003	179	-26.03%	252	2.44%	8,127	-4.09%	22,179	-9.97%	30,737	-7.84%
2004	209	16.76%	353	40.08%	8,288	1.98%	22,258	0.35%	31,109	1.21%
2005	241	15.31%	1,120	217.28%	12,570	51.67%	21,307	-4.46%	35,241	13.28%
2006	125	-48.13%	301	-73.13%	13,406	6.65%	18,652	-14.23%	32,483	-7.83%
2007	86	-31.20%	1,052	249.50%	13,942	4.00%	19,470	4.20%	34,552	6.37%
2008	64	-25.58%	1,590	51.14%	10,830	-22.32%	15,397	-26.45%	27,881	-19.31%

Regional Data Statistics

PALM SPRINGS INTERNATIONAL AIRPORT (PSP)

YEAR	PASSENGERS	CHANGE (%)	CARGO (TONS)	CHANGE (%)	OPERATIONS*	CHANGE (%)
2000	1,281,000		144		96,103	
2001	1,175,000	-8.27%	101	-29.86%	98,558	2.55%
2002	1,110,118	-5.52%	82	-18.81%	104,455	5.98%
2003	1,247,743	12.40%	113	37.80%	93,068	-10.90%
2004	1,367,804	9.62%	104	-7.96%	95,169	2.26%
2005	1,419,087	3.75%	75	-27.88%	92,853	-2.43%
2006	1,529,005	7.75%	22	-70.67%	94,578	1.86%
2007	1,609,428	5.26%	19	-13.64%	84,629	-10.52%
2008	1,542,925	-4.13%	26	36.84%	72,876	-13.89%
2009	1,465,751	-5.00%	27	3.08%	70,670	-3.03%

*Provided Below

OPERATIONS

YEAR	AIR CARRIER	CHANGE (%)	AIR TAXI	CHANGE (%)	GENERAL AVIATION	CHANGE (%)	MILITARY	CHANGE (%)	TOTAL	CHANGE (%)
2000	9,580		26,206		59,287		1,030		96,103	
2001	8,245	-13.94%	27,995	6.83%	61,588	3.88%	730	-41.10%	98,558	2.55%
2002	9,060	9.88%	23,518	-15.99%	71,011	15.30%	866	15.70%	104,455	5.98%
2003	8,261	-8.82%	26,067	10.84%	57,763	-18.66%	977	11.36%	93,068	-10.90%
2004	8,761	6.05%	25,427	-2.46%	60,084	4.02%	897	-8.92%	95,169	2.26%
2005	9,766	11.47%	23,312	-8.32%	58,820	-2.10%	955	6.07%	92,853	-2.43%
2006	10,287	5.33%	24,959	7.07%	58,073	-1.27%	1,259	24.15%	94,578	1.86%
2007	11,520	11.99%	24,371	-2.36%	47,428	-18.33%	1,310	3.89%	84,629	-10.52%
2008	11,331	-1.64%	21,137	-13.27%	39,181	-17.39%	1,227	-6.76%	72,876	-13.89%
2009	11,276	-0.49%	19,696	-6.82%	38,231	-2.42%	1,467	16.36%	70,670	-3.03%