

# **Terminals 2 & 3 Modernization (Delta Sky Way)**

Mitigation Monitoring and Reporting Program

2018 Annual Progress Report

Prepared by Los Angeles World Airports  
Environmental Programs Group and  
Planning & Development Group  
April 2019

# Table of Contents

## Terminals 2 & 3 Modernization (Delta Sky Way)

Introduction	3
Project Background	4
MMRP Summary Table Overview	5
Air Quality	6
Appendix A – Measures Not Triggered in 2018	7

# Introduction

## Terminals 2 & 3 Modernization (Delta Sky Way)

The California Environmental Quality Act (CEQA) requires the adoption of a Mitigation Monitoring and Reporting Program (MMRP) to report on environmental impacts associated with a development project. The adopted MMRP describes the procedures for the implementation of a project's mitigation measures. Monitoring and implementation of all of the measures are the responsibility of Los Angeles World Airports (LAWA), and/or the party implementing the project. LAWA, at its discretion, may delegate implementation responsibility or portions thereof to a licensed contractor or other responsible party.

The primary purpose of this report is to document and report on the status of the current and recently completed mitigation measures set forth in the adopted MMRP for the period from **January 1, 2018 through December 31, 2018**.

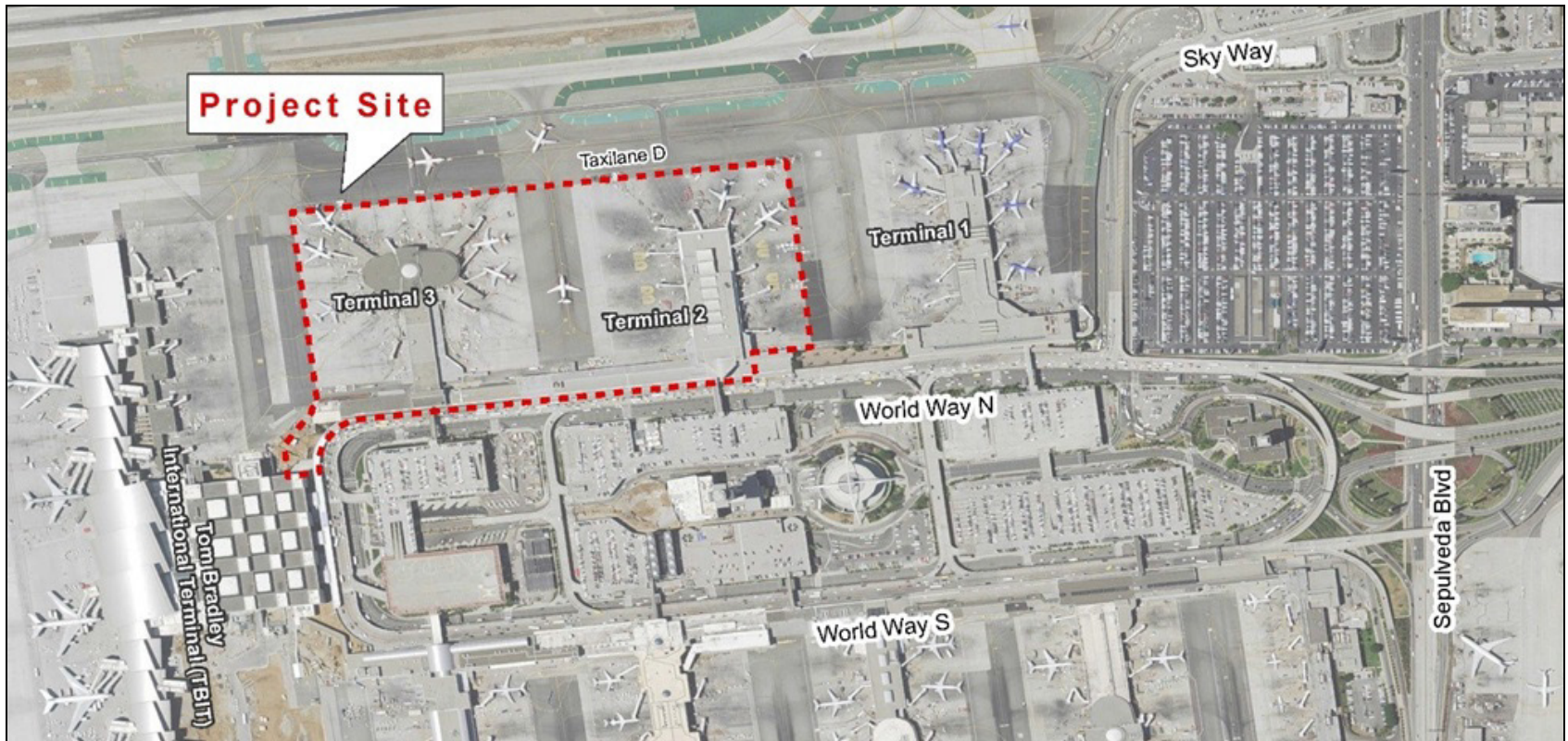
**Please note that construction activities did not occur during the reporting period. However, this document reports on related activities (i.e. construction equipment submittals and approvals) that occurred during 2018.**

\*\*To view the project's adopted MMRP and previous annual progress reports, please visit <https://www.lawa.org/en/lawa-our-lax/studies-and-reports/mitigation-monitoring-reporting-program>.

# Project Background

## Terminals 2 & 3 Modernization (Delta Sky Way)

The Terminals 2 & 3 Modernization Project (also known as “Delta Sky Way”) is a tenant-initiated project that will modernize two terminals and add approximately 830,000 square feet of new building space. The project will provide additional space for ticketing, passenger and baggage check-in, and security screening. The Terminals 2 & 3 Modernization Project will ease passenger congestion and provide enhanced connectivity between the two terminals – both within the ticketing and check-in portion as well as post-security screening.



# MMRP Summary Table Overview

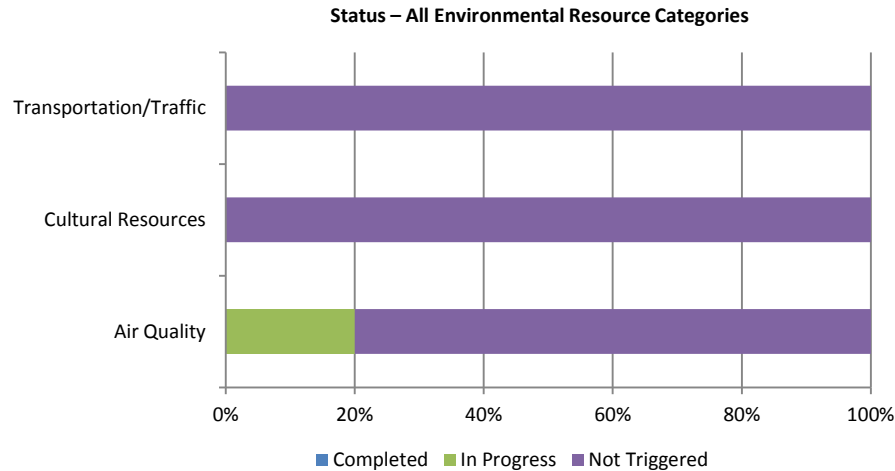
## Terminals 2 & 3 Modernization (Delta Sky Way)

The MMRP Summary Table provides an overview of the progress of the implementation of mitigation measures during the reporting period. The following are included in the table:

- **Resource Category** – lists the environmental factor/resource category
- **Measure ID** – lists the mitigation number as identified in the project's MMRP
- **Status** – the following categories state the progress of the implementation at time of reporting:
  - **Completed:** Mitigation measure was completed during this reporting period.
  - **In Progress:** Mitigation measure was implemented or is ongoing during the reporting period.
  - **Not Triggered:** Mitigation measure was not triggered during the reporting period. These measures may be triggered in future reporting periods.

# Air Quality

## Terminals 2 & 3 Modernization (Delta Sky Way)



Measure ID	Overview	Status	Summary of how goal was/is being met
LAX-AQ-1e	Outfit construction diesel-fueled equipment with the best available emission control devices	In Progress	Construction activities did not occur in 2018; however, the contractor submitted off-road equipment lists to LAWA for review and approval. Six (6) Tier 4 (final) diesel-powered off-road construction equipment were approved per the measure. No on-road equipment lists were submitted to LAWA and no exceptions were requested/granted during the 2018 reporting period.
LAX-AQ-1n	Locate rock-crushing operations and laydown/stockpile areas away from LAX-adjacent residents, to the extent possible	In Progress	The project's assigned laydown/stockpile area is located near the intersection of Westchester Parkway and La Tijera Parkway, which is over 1,000 feet from the nearest residential land use. No construction activities, including rock-crushing operations, occurred during the reporting period.
LAX-AQ-1p	Off-road diesel-powered construction equipment greater than 50 horsepower shall meet minimum USEPA Tier 4 (final) off-road emission standards	In Progress	See LAX-AQ-1e above.

# **Appendix A**

Measures Not Triggered in 2018

# Appendix A

## Measures Not Triggered in 2018

Appendix A provides a list of mitigation measures that were not triggered during the 2018 reporting period. These mitigation measures will be reported on in future progress reports.

Measure ID	Resource Category	Overview
LAX-AQ-1a	Air Quality	Post signage for dust complaints
LAX-AQ-1b	Air Quality	Cover or treat all ground surfaces
LAX-AQ-1c	Air Quality	Lay building pads/install roadways, sidewalks, etc. as soon as practical
LAX-AQ-1d	Air Quality	Prohibit idling/queuing of diesel-fueled vehicles in excess of 5 minutes
LAX-AQ-1g	Air Quality	Have construction employees' work/commute during the off-peak hours to the extent feasible
LAX-AQ-1h	Air Quality	Make on-site lunch trucks available during construction
LAX-AQ-1i	Air Quality	Utilize on-site rock crushing facility, when feasible
LAX-AQ-1j	Air Quality	Provide electricity from the electric grid and portable generators using clean-burning diesel
LAX-AQ-1m	Air Quality	Designate a person(s) to ensure implementation of all construction-related measures
LAX-AQ-1o	Air Quality	On-road trucks 14,001lbs or more must comply with USEPA 2010 on-road standards for PM10 and NOx
LAX-AQ-1q	Air Quality	LAX-AQ-1o and LAX-AQ-1p above shall apply unless exceptions are granted
MM-AQ (T2/T3)-1	Air Quality	Renewable diesel fuel requirement for construction equipment and on-road trucks



# Appendix A

## Measures Not Triggered in 2018

Measure ID	Resource Category	Overview
LAX-AR-1	Cultural Resources	LAWA Archaeological Treatment Plan conformance
LAX-AR-2	Cultural Resources	Archaeological resources briefing
LAX-PR-1	Cultural Resources	LAWA Paleontological Management Treatment Plan conformance
LAX-PR-2	Cultural Resources	Paleontological resources briefing
LAX-ST-1	Transportation/Traffic	Construction Traffic Management Plan