



United Airlines East Aircraft Maintenance and Ground Support Equipment Facility Project

Mitigation Monitoring and Reporting Program

2019 Annual Progress Report

Prepared by Los Angeles World Airports
Environmental Programs & Sustainability Group
and Planning & Development Group
June 2020

Table of Contents

Terminal 1.5

Introduction	3
Project Background	4
MMRP Summary Table Overview	5
Air Quality	6
Transportation/Traffic	7

Introduction

Terminal 1.5

The California Environmental Quality Act (CEQA) requires the adoption of a Mitigation Monitoring and Reporting Program (MMRP) to report on environmental impacts associated with a development project. The adopted MMRP describes the procedures for the implementation of a project's mitigation measures. Monitoring and implementation of all of the measures are the responsibility of Los Angeles World Airports (LAWA), and/or the party implementing the project. LAWA, at its discretion, may delegate implementation responsibility or portions thereof to a licensed contractor or other responsible party.

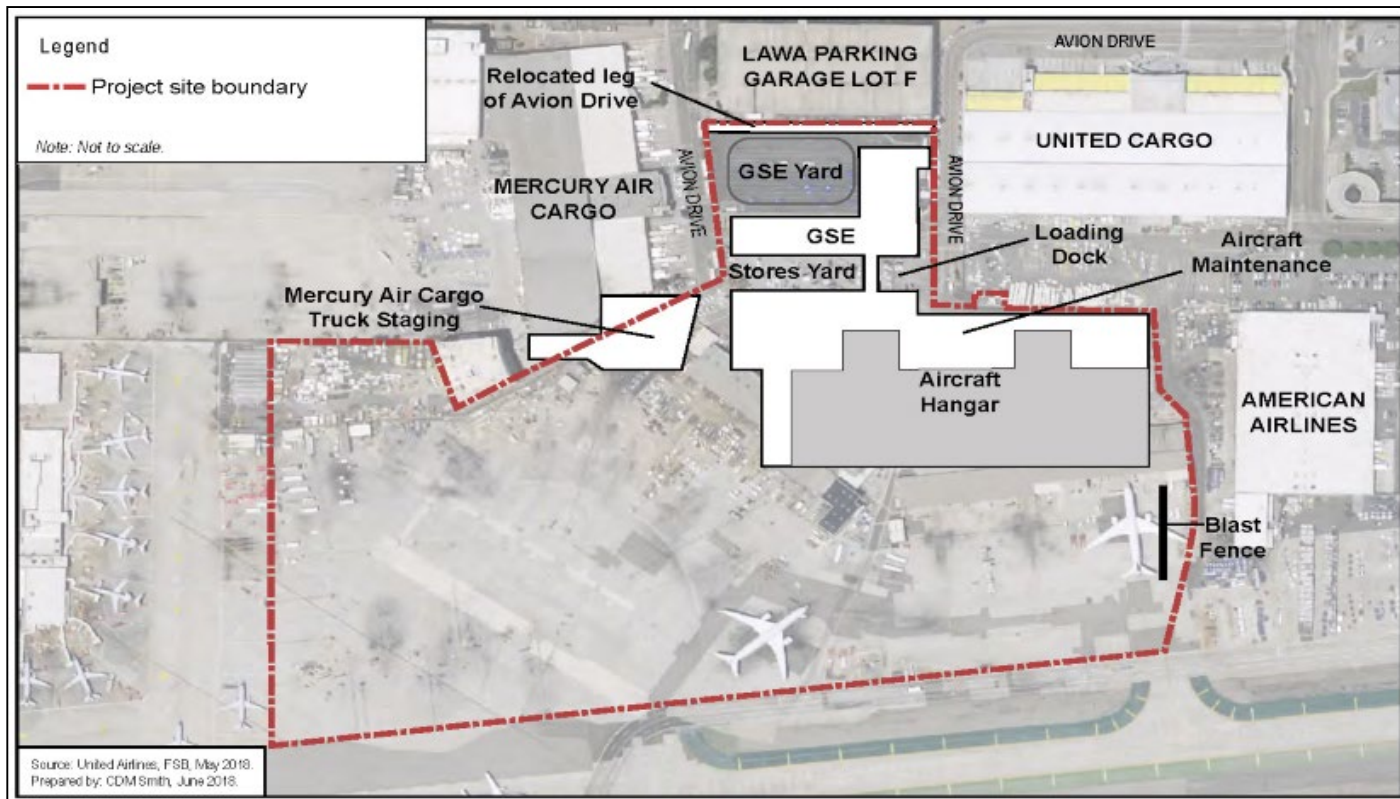
The primary purpose of this report is to document and report on the status of the current and recently completed mitigation measures set forth in the adopted MMRP for the period from **January 1, 2019 through December 31, 2019**.

**To view the project's adopted MMRP and previous annual progress reports, please visit <https://www.lawa.org/en/lawa-our-lax/studies-and-reports/mitigation-monitoring-reporting-program>.

Project Background

United Airlines East Aircraft Maintenance and Ground Support Equipment Facility Project

United Airlines (UAL) currently performs maintenance in two areas at LAX: West Maintenance Facility and East Maintenance Facility. The construction of the new East Aircraft Maintenance and Ground Support Equipment Facility will allow UAL to consolidate and modernize their existing aircraft maintenance and Ground Support Equipment (GSE) facilities at LAX, and will facilitate a more efficient and effective maintenance of existing aircraft and GSE at the airport. The new maintenance building will be designed to meet LEED Silver standards and will allow aircraft engines to be powered down during maintenance thereby reducing the use of fossil fuel-sourced mobile power units and resulting in lower air emissions.



MMRP Summary Table Overview

United Airlines East Aircraft Maintenance and Ground Support Equipment Facility Project

The MMRP Summary Table provides an overview of the progress of the implementation of mitigation measures during the reporting period. The following are included in the table:

- **Resource Category** – lists the environmental factor/resource category
- **Measure ID** – lists the mitigation number as identified in the project’s MMRP
- **Status** – the following categories state the progress of the implementation at time of reporting:
 - **Completed:** Mitigation measure was completed during this reporting period.
 - **In Progress:** Mitigation measure was implemented or is ongoing during the reporting period.
 - **Not Triggered:** Mitigation measure was not triggered during the reporting period. These measures may be triggered in future reporting periods.

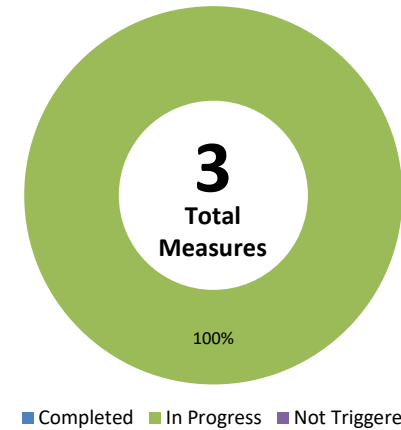
Air Quality

United Airlines East Aircraft Maintenance and Ground Support Equipment Facility Project

Number of Mitigation Measures by CEQA Resource Category (4 Total)



Status of Air Quality Mitigation Measures



Measure ID	Overview	Status	Summary of Compliance
MM-AQ (UAL)-1a	On-road trucks 14,001lbs or more must comply with USEPA 2010 on-road standards for PM10 and NOx	In Progress	The contractor submitted equipment lists to LAWA for review and approval. Forty-eight (48) pieces of on-road construction equipment were approved during the reporting period. Additional pieces of equipment will be submitted by the contractor for LAWA's review and approval while the project is under construction.
MM-AQ (UAL)-1b	Off-road diesel-powered construction equipment greater than 50 horsepower shall meet minimum USEPA Tier 4 (final) off-road emission standards	In Progress	The contractor submitted equipment lists to LAWA for review and approval. One hundred twenty-two (122) pieces of off-road construction equipment as well as two (2) Portable Equipment Registration Program (PERP) equipment were granted approval status by LAWA.
MM-AQ (UAL)-1c	MM-AQ (UAL)-1a and MM-AQ (UAL)-1b above shall apply unless exceptions are granted	In Progress	Three (3) exceptions were granted by LAWA during the reporting period. All were granted the 120 mile exception.

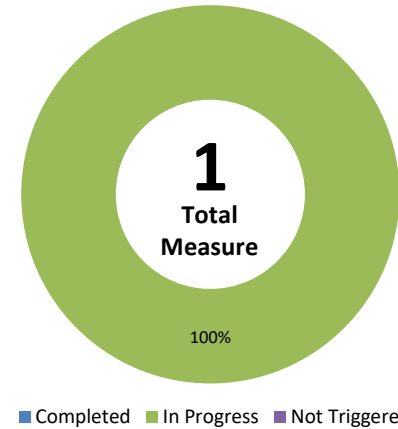
Transportation/Traffic

United Airlines East Aircraft Maintenance and Ground Support Equipment Facility Project

Number of Mitigation Measures by CEQA Resource Category (4 Total)



Status of Transportation/Traffic Mitigation Measures



Measure ID	Overview	Status	Summary of Compliance
MM-ST (UAL)-1	Truck Deliveries and Hauling of Materials Shall be Scheduled During Off-Peak Hours. (Peak hours are defined between 7:00 a.m. to 9:00 a.m. and 4:30 p.m. to 6:30 p.m. Monday-Friday)	In Progress	Construction deliveries and hauling mostly occurred during off-peak hours. During the reporting period, three (3) violations were noted and addressed by contractor. In addition, the contractor requested four (4) waivers for this measure, but only two (2) were granted. All waivers were for a boring method that requires concrete to be pumped while drilling.