

# California State Airport Noise Standards Quarterly Report

Fourth Quarter 2014



**LAX**

*Los Angeles  
World Airports*

Los Angeles World Airports  
Los Angeles International Airport

February 25, 2015

## **TABLE OF CONTENTS**

---

### California State Airport Noise Standards Quarterly Report

1. Division of Aeronautics Form 617
2. Incompatible Land Use Data
3. Daily Aircraft CNEL Data
4. Runway Utilization Report
  - Summary of Runway Use
  - Summary of Runway Flow
5. Summary of Actions

### Attachment

Noise contour map

**SUMMARY OF STATISTICAL INFORMATION  
FOR  
CALIFORNIA DEPARTMENT OF TRANSPORTATION**

Los Angeles International Airport  
Fourth Quarter 2014

1. Size of Noise Impact Area as defined in the Noise Standards (California Code of Regulations, Title 21, Chapter 2.5, Subchapter 6):

**717.9 Acres**

---

2. Estimated number of dwelling units included in the Noise Impact Area as defined in the Noise Standards:

**9,973**

---

3. Estimated number of people residing within the Noise Impact Area as defined in the Noise Standards:

**34,971**

---

4. Identification of aircraft type having highest takeoff noise level operating at this airport together with estimated number of operations by this aircraft type during the calendar quarter reporting period:

**B747: 3,273**

---

5. Total number of aircraft operations during the calendar quarter\*:

**158,643**

---

6. Number of Air Carrier operations during the calendar quarter: (Not Mandatory)\*

**134,272**

---

7. Percentage of Air Carrier operations by aircraft certificated under Federal Aviation Regulation (FAR) Part 36, Stage III. (Not Mandatory)

**100 %**

---

8. Estimated number of operations by General Aviation aircraft during the calendar quarter: (Not Mandatory)\*

**4,349**

---

9. Estimated number of operations by Military aircraft during the calendar quarter: (Not Mandatory)\*

**442**

---

# LOS ANGELES INTERNATIONAL AIRPORT

## Incompatible Land Use

### Annual Noise Impact Accumulated by Noise Zone: CNEL 65, 70, and 75 +

<b>4Q14</b>	<b>Total Cumulative Noise Impact Areas - All Jurisdictions</b>											
	<i>CNEL 65 dB and Above</i>				<i>CNEL 70 dB and Above</i>				<i>CNEL 75 dB and Above</i>			
Land Use	Acres	Dwelling Units	Parcels	Population	Acres	Dwelling Units	Parcels	Population	Acres	Dwelling Units	Parcels	Population
Single Family	343.8	2,401	2,455	8,671	75.5	518	525	2,274	3.7	19	20	98
Multi-Family	348.9	7,552	2,284	26,248	101.4	2,179	599	8,850	5.7	62	20	335
Mobile Home	1.0	1	3	3	0.0	0	0	0	0.0	0	0	0
Schools	2.1	0	2	0	0.0	0	0	0	0.0	0	0	0
Churches	21.5	19	44	49	2.4	0	2	0	0.0	0	0	0
Hospitals	0.6	0	2	0	0.0	0	0	0	0.0	0	0	0
<b>Total Incompatible</b>	<b>717.9</b>	<b>9,973</b>	<b>4,790</b>	<b>34,971</b>	<b>179.3</b>	<b>2,697</b>	<b>1,126</b>	<b>11,124</b>	<b>9.4</b>	<b>81</b>	<b>40</b>	<b>432</b>

Note: Parcels and dwelling units may not match for single family land uses due to subdivision.  
Parcels for multifamily land uses reflect only the common area parcel, except for condominiums.

# LOS ANGELES INTERNATIONAL AIRPORT

## Incompatible Land Use

### Annual Noise Impact Accumulated by Noise Zone: CNEL 65, 70, and 75 +

<b>4Q14</b>	<b>Total Cumulative Noise Impact Areas - Athens</b>											
	<i>CNEL 65 dB and Above</i>				<i>CNEL 70 dB and Above</i>				<i>CNEL 75 dB and Above</i>			
	Land Use	Acres	Dwelling Units	Parcels	Population	Acres	Dwelling Units	Parcels	Population	Acres	Dwelling Units	Parcels
Single Family	43.1	323	342	1,144	0.0	0	0	0	0.0	0	0	0
Multi-Family	49.0	944	323	3,286	0.0	0	0	0	0.0	0	0	0
Mobile Home	0.0	0	0	0	0.0	0	0	0	0.0	0	0	0
Schools	0.0	0	0	0	0.0	0	0	0	0.0	0	0	0
Churches	1.6	4	7	14	0.0	0	0	0	0.0	0	0	0
Hospitals	0.0	0	0	0	0.0	0	0	0	0.0	0	0	0
<b>Total Incompatible</b>	<b>93.7</b>	<b>1,271</b>	<b>672</b>	<b>4,444</b>	<b>0.0</b>	<b>0</b>	<b>0</b>	<b>0</b>	<b>0.0</b>	<b>0</b>	<b>0</b>	<b>0</b>

Note: Parcels and dwelling units may not match for single family land uses due to subdivision.  
Parcels for multifamily land uses reflect only the common area parcel, except for condominiums.

Report Date: 02/24/2015

# LOS ANGELES INTERNATIONAL AIRPORT

## Incompatible Land Use

### Annual Noise Impact Accumulated by Noise Zone: CNEL 65, 70, and 75 +

<b>4Q14</b>	<b>Total Cumulative Noise Impact Areas - Del Aire</b>											
	<i>CNEL 65 dB and Above</i>				<i>CNEL 70 dB and Above</i>				<i>CNEL 75 dB and Above</i>			
	Land Use	Acres	Dwelling Units	Parcels	Population	Acres	Dwelling Units	Parcels	Population	Acres	Dwelling Units	Parcels
Single Family	0.7	4	4	12	0.0	0	0	0	0.0	0	0	0
Multi-Family	0.6	10	2	18	0.0	0	0	0	0.0	0	0	0
Mobile Home	0.0	0	0	0	0.0	0	0	0	0.0	0	0	0
Schools	0.0	0	0	0	0.0	0	0	0	0.0	0	0	0
Churches	0.0	0	0	0	0.0	0	0	0	0.0	0	0	0
Hospitals	0.0	0	0	0	0.0	0	0	0	0.0	0	0	0
<b>Total Incompatible</b>	<b>1.3</b>	<b>14</b>	<b>6</b>	<b>30</b>	<b>0.0</b>	<b>0</b>	<b>0</b>	<b>0</b>	<b>0.0</b>	<b>0</b>	<b>0</b>	<b>0</b>

Note: Parcels and dwelling units may not match for single family land uses due to subdivision.  
 Parcels for multifamily land uses reflect only the common area parcel, except for condominiums.

Report Date: 02/24/2015

# LOS ANGELES INTERNATIONAL AIRPORT

## Incompatible Land Use

### Annual Noise Impact Accumulated by Noise Zone: CNEL 65, 70, and 75 +

<b>4Q14</b>	<b>Total Cumulative Noise Impact Areas - City of El Segundo</b>											
	<i>CNEL 65 dB and Above</i>				<i>CNEL 70 dB and Above</i>				<i>CNEL 75 dB and Above</i>			
	Land Use	Acres	Dwelling Units	Parcels	Population	Acres	Dwelling Units	Parcels	Population	Acres	Dwelling Units	Parcels
Single Family	85.9	569	573	1,481	13.6	86	86	219	0.0	0	0	0
Multi-Family	28.2	754	315	1,645	9.0	281	108	617	0.0	0	0	0
Mobile Home	0.4	1	1	3	0.0	0	0	0	0.0	0	0	0
Schools	0.0	0	0	0	0.0	0	0	0	0.0	0	0	0
Churches	0.7	0	2	0	0.0	0	0	0	0.0	0	0	0
Hospitals	0.0	0	0	0	0.0	0	0	0	0.0	0	0	0
<b>Total Incompatible</b>	<b>115.2</b>	<b>1,324</b>	<b>891</b>	<b>3,129</b>	<b>22.6</b>	<b>367</b>	<b>194</b>	<b>836</b>	<b>0.0</b>	<b>0</b>	<b>0</b>	<b>0</b>

Note: Parcels and dwelling units may not match for single family land uses due to subdivision.  
Parcels for multifamily land uses reflect only the common area parcel, except for condominiums.

Report Date: 02/24/2015

# LOS ANGELES INTERNATIONAL AIRPORT

## Incompatible Land Use

### Annual Noise Impact Accumulated by Noise Zone: CNEL 65, 70, and 75 +

<b>4Q14</b>	<b>Total Cumulative Noise Impact Areas - City of Inglewood</b>											
	<i>CNEL 65 dB and Above</i>				<i>CNEL 70 dB and Above</i>				<i>CNEL 75 dB and Above</i>			
	Land Use	Acres	Dwelling Units	Parcels	Population	Acres	Dwelling Units	Parcels	Population	Acres	Dwelling Units	Parcels
Single Family	123.0	857	878	3,043	11.6	80	83	358	0.0	0	0	0
Multi-Family	167.9	3,734	983	13,176	35.4	911	160	3,976	0.0	0	0	0
Mobile Home	0.6	0	2	0	0.0	0	0	0	0.0	0	0	0
Schools	2.1	0	2	0	0.0	0	0	0	0.0	0	0	0
Churches	14.0	12	25	24	2.1	0	1	0	0.0	0	0	0
Hospitals	0.6	0	2	0	0.0	0	0	0	0.0	0	0	0
<b>Total Incompatible</b>	<b>308.2</b>	<b>4,603</b>	<b>1,892</b>	<b>16,244</b>	<b>49.1</b>	<b>991</b>	<b>244</b>	<b>4,334</b>	<b>0.0</b>	<b>0</b>	<b>0</b>	<b>0</b>

Note: Parcels and dwelling units may not match for single family land uses due to subdivision.  
Parcels for multifamily land uses reflect only the common area parcel, except for condominiums.

Report Date: 02/24/2015



# LOS ANGELES INTERNATIONAL AIRPORT

## Incompatible Land Use

### Annual Noise Impact Accumulated by Noise Zone: CNEL 65, 70, and 75 +

<b>4Q14</b>	<b>Total Cumulative Noise Impact Areas - Lennox</b>											
	<i>CNEL 65 dB and Above</i>				<i>CNEL 70 dB and Above</i>				<i>CNEL 75 dB and Above</i>			
	Land Use	Acres	Dwelling Units	Parcels	Population	Acres	Dwelling Units	Parcels	Population	Acres	Dwelling Units	Parcels
Single Family	78.9	553	560	2,659	50.3	352	356	1,698	3.7	19	20	98
Multi-Family	82.2	1,288	472	6,031	53.1	779	313	3,752	5.7	62	20	335
Mobile Home	0.0	0	0	0	0.0	0	0	0	0.0	0	0	0
Schools	0.0	0	0	0	0.0	0	0	0	0.0	0	0	0
Churches	1.6	1	3	4	0.3	0	1	0	0.0	0	0	0
Hospitals	0.0	0	0	0	0.0	0	0	0	0.0	0	0	0
<b>Total Incompatible</b>	<b>162.7</b>	<b>1,842</b>	<b>1,035</b>	<b>8,694</b>	<b>103.7</b>	<b>1,131</b>	<b>670</b>	<b>5,450</b>	<b>9.4</b>	<b>81</b>	<b>40</b>	<b>432</b>

Note: Parcels and dwelling units may not match for single family land uses due to subdivision.  
Parcels for multifamily land uses reflect only the common area parcel, except for condominiums.

Report Date: 02/24/2015

# LOS ANGELES INTERNATIONAL AIRPORT

## Incompatible Land Use

### Annual Noise Impact Accumulated by Noise Zone: CNEL 65, 70, and 75 +

<b>4Q14</b>	<b>Total Cumulative Noise Impact Areas - South and South East LA</b>											
	<i>CNEL 65 dB and Above</i>				<i>CNEL 70 dB and Above</i>				<i>CNEL 75 dB and Above</i>			
	Land Use	Acres	Dwelling Units	Parcels	Population	Acres	Dwelling Units	Parcels	Population	Acres	Dwelling Units	Parcels
Single Family	9.9	82	83	298	0.0	0	0	0	0.0	0	0	0
Multi-Family	5.4	113	45	391	0.0	0	0	0	0.0	0	0	0
Mobile Home	0.0	0	0	0	0.0	0	0	0	0.0	0	0	0
Schools	0.0	0	0	0	0.0	0	0	0	0.0	0	0	0
Churches	2.4	1	6	4	0.0	0	0	0	0.0	0	0	0
Hospitals	0.0	0	0	0	0.0	0	0	0	0.0	0	0	0
<b>Total Incompatible</b>	<b>17.7</b>	<b>196</b>	<b>134</b>	<b>693</b>	<b>0.0</b>	<b>0</b>	<b>0</b>	<b>0</b>	<b>0.0</b>	<b>0</b>	<b>0</b>	<b>0</b>

Note: Parcels and dwelling units may not match for single family land uses due to subdivision.  
Parcels for multifamily land uses reflect only the common area parcel, except for condominiums.

Report Date: 02/24/2015

# LOS ANGELES INTERNATIONAL AIRPORT

## Incompatible Land Use

### Annual Noise Impact Accumulated by Noise Zone: CNEL 65, 70, and 75 +

<b>4Q14</b>	<b>Total Cumulative Noise Impact Areas - Westchester/Playa Del Rey</b>											
	<i>CNEL 65 dB and Above</i>				<i>CNEL 70 dB and Above</i>				<i>CNEL 75 dB and Above</i>			
	Land Use	Acres	Dwelling Units	Parcels	Population	Acres	Dwelling Units	Parcels	Population	Acres	Dwelling Units	Parcels
Single Family	2.3	13	15	33	0.0	0	0	0	0.0	0	0	0
Multi-Family	15.6	709	144	1,701	3.8	208	18	504	0.0	0	0	0
Mobile Home	0.0	0	0	0	0.0	0	0	0	0.0	0	0	0
Schools	0.0	0	0	0	0.0	0	0	0	0.0	0	0	0
Churches	1.3	1	1	2	0.0	0	0	0	0.0	0	0	0
Hospitals	0.0	0	0	0	0.0	0	0	0	0.0	0	0	0
<b>Total Incompatible</b>	<b>19.2</b>	<b>723</b>	<b>160</b>	<b>1,736</b>	<b>3.8</b>	<b>208</b>	<b>18</b>	<b>504</b>	<b>0.0</b>	<b>0</b>	<b>0</b>	<b>0</b>

Note: Parcels and dwelling units may not match for single family land uses due to subdivision.  
Parcels for multifamily land uses reflect only the common area parcel, except for condominiums.

Report Date: 02/24/2015

October	AIR1	PDR1	PDR2	PDR3*	ESG1	ESG2	ESG3	ESG4*	ESG5	DEL1*	WCH1*	WCH2	WCH3	WCH4*	WCH5	WCH6	ING1	ING2	ING3	ING4	ING6	ING5*	ING7*	ING8	LN1	LN2	LN3	LN4	ATH1*	ATH2	SLA1	SLA2*	SLA3	SLA4*	SLA5	SLA6*	SLA7	SLA8*	SLA9*
1 Wed	80	69	64	57	65	68	61	56	58	42	58	62	60	58	74	63	61	66	67		70	57	57	61	75	62	61	65	60	65	65	61	62	60	64	61	64	63	61
2 Thu	79	68	63	56	64	68	64	62	65	61	57	62	62	58	74	62	60	64	66		68	57	54	59	74	62	62	65	59	64	63	57	60	57	62	61	62	58	58
3 Fri	79	67	61	56	64	67	65	62	66	60	56	61	63	61	73	62	60	64	66		68	57	53	60	74	64	62	66	59	65	62	56	60	56	59	64	63	60	61
4 Sat	80	65	58	55	63	68	65	61	66	55	57	63	60	61	73	61	58	64	65		67	57	53	60	72	61	62	63	58	65	62	56	58	61	62	63	63	53	58
5 Sun	79	68	62	58	64	67	62	59	60	54	57	62	59	56	75	64	60	66	67		69	56	57	61	74	61	61	65	56	65	65	57	60	59	62	61	62	60	60
6 Mon	80	69	64	59	64	67	61	57	59	50	60	62	60	59	74	64	61	65	66		70	58	55	61	74	62	61	65	58	65	64	57	60	58	63	60	63	59	59
7 Tue	79	68	63	59	64	67	62	56	58	47	58	62	61	59	75	64	60	66	67		69	57	55	60	74	63	60	64	57	64	64	59	60	58	62	60	63	62	60
8 Wed	80	68	62	57	65	68	61	55	58	48	56	59	60	59	74	63	60	66	66		69	57	56	60	75	62	61	66	59	65	65	59	61	59	63	60	64	62	60
9 Thu	80	69	65	58	65	68	62	56	58	52	56	61	60	57	75	63	62	66	68		69	57	58	61	74	62	61	65	61	66	65	61	61	60	64	61	64	61	62
10 Fri	80	69	64	59	65	68	62	56	59	51	55	59	60	59	75	63	63	66	67		71	59	57	62	76	63	62	67	61	66	65	59	62	59	65	61	65	62	62
11 Sat	80	67	61	53	64	68	61	56	57	44	53	57	56	57	74	65	59	66	66		69	57	55	61	74	61	62	65	60	65	64	57	62	58	66	60	63	61	60
12 Sun	79	68	61	56	64	68	61	59	56	44	55	58	55	52	75	63	61	66	67		69	58	57	59	74	61	60	64	61	66	65	58	61	59	63	61	64	61	61
13 Mon	80	68	64	58	64	68	61	55	56	43	55	60	58	56	74	63	60	66	67		70	58	56	63	75	62	61	66	59	66	64	58	61	59	64	64	64	61	61
14 Tue	79	69	62	57	64	68	62	57	58	46	56	60	60	57	75	63	61	66	67		70	58	57	61	75	62	62	66	60	66	65	58	62	60	64	61	65	62	62
15 Wed	80	69	62	56	65	69	63	57	60	49	--	60	59	58	75	63	61	66	68		70	57	57	62	74	63	61	65	61	66	66	60	61	60	64	63	65	61	61
16 Thu	80	69	63	57	64	68	62	57	59	52	--	62	60	59	75	63	62	66	67		71	59	57	62	75	62	62	66	57	66	65	60	62	60	64	61	65	62	62
17 Fri	79	69	63	58	65	68	69	60	63	49	55	62	63	60	74	63	61	66	67		70	59	57	62	75	62	62	66	59	66	65	60	62	60	64	62	65	64	62
18 Sat	80	67	62	55	64	68	61	56	58	44	55	60	59	57	71	61	62	64	66		68	57	55	61	73	63	60	64	59	66	63	58	61	58	63	60	64	60	60
19 Sun	79	69	62	56	64	67	60	56	57	42	56	62	61	57	75	64	61	67	68		70	59	57	61	77	63	62	66	60	66	65	59	62	59	64	60	64	62	61
20 Mon	79	68	63	58	64	68	61	55	57	44	55	61	61	59	74	63	60	66	67		70	58	57	62	75	62	61	65	61	66	65	59	62	59	64	61	64	61	61
21 Tue	79	68	62	57	65	68	61	57	56	46	57	63	61	60	75	63	61	66	67		69	58	57	63	74	62	61	65	61	65	65	59	61	60	64	62	64	61	60
22 Wed	81	68	63	57	65	68	62	59	58	46	57	64	63	58	75	63	60	65	66		69	56	56	60	74	61	61	64	58	65	64	59	61	59	63	61	64	61	60
23 Thu	80	69	63	58	65	68	63	61	61	55	59	64	64	61	75	63	61	66	67		70	58	58	60	74	60	62	65	58	66	65	58	61	59	64	61	63	61	60
24 Fri	80	69	62	58	65	68	63	60	60	55	57	62	65	60	75	63	61	67	67		70	59	57	60	76	61	64	66	55	65	64	58	61	59	63	61	64	60	59
25 Sat	79	67	61	54	64	68	61	57	58	51	54	62	64	59	75	64	61	66	67		69	58	57	60	74	61	62	65	60	66	65	59	61	60	63	61	65	56	61
26 Sun	80	68	61	55	65	68	62	56	57	43	56	63	62	57	74	62	60	66	67		69	57	57	60	74	60	61	65	60	65	65	58	61	59	63	60	65	62	60
27 Mon	79	68	63	59	64	68	63	55	61	46	55	62	62	60	74	63	61	66	67		70	62	57	62	76	61	62	66	61	66	65	58	61	59	64	61	64	62	60
28 Tue	80	68	61	57	65	68	62	58	60	50	56	63	62	59	74	63	60	67	67		69	59	56	60	75	61	63	66	61	66	65	57	61	59	63	62	65	61	60
29 Wed	80	68	61	57	65	68	62	57	59	50	56	62	62	59	74	63	61	65	66		69	58	56	60	74	61	62	65	61	65	64	58	61	58	63	62	64	60	60
30 Thu	80	68	63	57	65	68	63	58	60	51	56	62	62	60	75	63	63	66	67		70	58	57	61	75	61	62	66	60	66	65	59	62	60	64	63	64	61	61
31 Fri	80	68	63		65	68	62	57	58	46	56	63	61	57	74	63	60	65	67		69	59	57	61	74		64	65	56	66	64	58	63	59	64	61	64	61	62

\* = Not Required for Title 21 Reporting

November	AIR1	PDR1	PDR2	PDR3*	ESG1	ESG2	ESG3	ESG4*	ESG5	DEL1*	WCH1*	WCH2	WCH3	WCH4*	WCH5	WCH6	ING1	ING2	ING3	ING4	ING6	ING5*	ING7*	ING8	LN1	LN2	LN3	LN4	ATH1*	ATH2	SLA1	SLA2*	SLA3	SLA4*	SLA5	SLA6*	SLA7	SLA8*	SLA9*
1 Sat	79	69	63	55	67	71	65	61	62	55	55	59	61	60	75	65	62	67	68		71	61	58	63	77	60	65	68	59	68	66	60	64	61	66	63	66	63	63
2 Sun	80	67	61	54	66	69	64	61	63	59	52	59	57	53	73	62	60	65	66		68	58	57	60	73	59	61	64	61	67	65	58	61	60	64	63	64	61	61
3 Mon	79	67	63	57	65	70	64	61	65	55	55	62	60	56	74	63	61	66	67		69	56	57	61	74	61	61	65	60	66	65	58	61	60	64	64	64	60	60
4 Tue	78	66	60	56	65	70	66	63	67	59	57	61	62	58	72	61	60	64	65		68	61	55	59	74	58	63	66	59	65	63	56	60	57	63	65	62	60	58
5 Wed	78	65	61	56	64	69	66	62	68	60		64	64	59	72	62	59	63	64		68	62	53	59	73	59	63	66	61	64	63	56	59	56	62	63	62	59	58
6 Thu	79	66	61	54	65	70	67	62	68	62	--	61	62	59	73	61	59	64	66		69	57	56	59	74	59	61	64	58	65	64	57	60	59	63	65	63	60	58
7 Fri	80	67	62	57	65	70	67	64	68	58	--	64	63	62	74	63	61	65	66		69	60	55	61	74		63	66	59	65	64	59	61	58	64	64	64	61	61
8 Sat	79	66	60	56	64	68	64	61	64	51	--	61	61	57	72	61	59	63	64		69	59	53	60	73	58	61	64	59	64	62	55	60	58	62	62	62	60	58
9 Sun	79	68	62	56	64	68	60	55	56	44	--	59	58	53	75	63	60	66	67		70	58	57	60	75	61	62	65	60	67	65	58	61	59	64	60	64	59	60
10 Mon	80	68	63	58	65	68	61	56	58	43	--	62	58	57	74	65	60	66	67		70	58	58	60	75		61	65	58	66	65	59	62	60	64	62	65	61	62
11 Tue	80	68	63	57	65	69	63	57	57	49	--	62	59	56	74	63	60	66	67		69	58	57	60	75		62	65		66	65	58	62	60	64	62	64	61	61
12 Wed	80	68	63	57	66	69	63	58	59	47	--	60	61	59	74	63	60	66	67		69	58	57	60	74		62	65	62	66	65	59	62	60	64	61	65	60	61
13 Thu	80	69	64	59	65	69	62	59	59	47	--	64	60	61	74	63	61	66	68		70	59	57	61	74		61	65	59	66	65	59	62	60	64	62	64	60	62
14 Fri	81	68	63	56	66	69	63	57	58	53	--	62	61	58	75	64	61	67	68		70	59	58	62	74		61	66	60	66	66	59	62	60	64	63	66	62	63
15 Sat	80	67	63	54	64	68	62	58	60	50	--	60	60	59	73	62	60	65	67		69	58	55	61	73		61	64	60	65	66	58	60	58	62	63	64	61	61
16 Sun	79	66	59	53	64	67	61	56	60	50	--	63	60	56	72	61	58	64	65		69	56	54	58	72		59	63	58	64	63	56	60	57	64	64	62	59	58
17 Mon	78	64	62	56	63	67	64	61	65	56	--	61	57	59	71	60	59	62	64		67	58	53	58	73		59	63	59	64	61	55	59	54	62	62	61	59	57
18 Tue	78	66	60	55	63	67	62	57	62	55	57	62	64	59	73	62	59	64	65		68	59	53	58	73	57	61	64	61	66	62	57	60	57	62	63	62	58	58
19 Wed	80	68	62	56	65	69	63	60	62	53	58	62	63	61	74	64	61	66	67		70	60	57	61	75		62	67	61	67	65	60	62	59	65	62	65	61	60
20 Thu	80	68	62	57	65	69	63	59	62	54	57	64	61	59	75	63	61	66	68		70	59	59	61	74		62	66	61	66	66	59	62	60	64	62	65	61	61
21 Fri	80	68	62	57	66	69	65	61	63	59	54	61	63	62	75	64	62	68	69		71	60	58	62	76	--	63	67	61	68	66	60	63	61	66	64	66	64	62
22 Sat	81	68	61	55	65	69	63	60	63	56	58	65	61	59	75	64	60	66	67		69	59	58	62	77	--	61	65	60	67	65	59	62	60	65	65	64	63	61
23 Sun	79	65	57	49	64	67	62	59	62	58	51	60	58	56	72	61	58	64	65		67	55	53	57	72	--	59	63	56	64	63	56	59	57	62	61	62	59	59
24 Mon	78	64	60	55	62	66	62	57	62	55	51	58	59	55	72	61	59	63	64		68	57	53	58	72	--	60	64	58	64	62	55	59	56	63	65	62	59	
25 Tue	79	65	59	55	63	68	64	61	65	57	55	63	62	56	73	61	59	64	65		67	55	53	58	72	--	61	63	58	63	64	56	59	57	62	64	62	58	--
26 Wed	79	66	60	56	63	68	66	62	68	61	56	62	62	56	73	62	59	64	65		69	58	54	59	73	--	61	64	56	64	63	56	59	57	63	66	62	59	--
27 Thu	77	65	58	53	62	65	62	59	63	57	54	61	62	59	71	59	57	61	63		65	55	51	56	71	--	59	62	56	62	62	59	57	57	60	63	59	58	--
28 Fri	80	65	60	56	63	67	63	60	63	50	56	61	61	58	71	60	58	63	64		69	59	53	60	74	--	61	65	55	65	62	56	61	56	63	64	63	60	--
29 Sat	79	68	62	57	64	68	62	57	60	51	59	66	61	57	75	64	63	67	68		70	60	58	63	76	--	64	67	54	67	66	62	62	60	66	65	65	58	--
30 Sun	80	69	63		66	69	62	59	61	53	59	64	60	57	75	65	63	67	68		70	59	60	63	74	--	61	66		67	66	61	62	60	64	63	64	60	--

\* = Not Required for Title 21 Reporting

December	AIR1	PDR1	PDR2	PDR3*	ESG1	ESG2	ESG3	ESG4*	ESG5	DEL1*	WCH1*	WCH2	WCH3	WCH4*	WCH5	WCH6	ING1	ING2	ING3	ING4	ING6	ING5*	ING7*	ING8	LN1	LN2	LN3	LN4	ATH1*	ATH2	SLA1	SLA2*	SLA3	SLA4*	SLA5	SLA6*	SLA7	SLA8*	SLA9*
1 Mon	81	69	64		65	69	64	60	63	57	57	63	59	58	75	64	63	67	68		69	58	58	60	74	--	60	65	55	66	66	59	62	61	64	63	64	61	--
2 Tue	78	69	63		64	67	62	60	62	61	58	65	63	61	72	69	68	67	66		70	64	63	68	74	--	68	68		64	63	66	63	59	62	65	61	59	--
3 Wed	73	67	61		62	65	59	57	60	62	56	62	63	61	74	70	70	67	67		73	68	63	71	77	--	72	72	56	68	64	68	67	60	66	65	65	63	
4 Thu	79	69	63	59	66	69	63	58	61	55	56	61	63	60	76	65	62	67	68		71	60	59	62	76	--	63	67	60	67	66	60	63	61	65	62	66	62	--
5 Fri	80	68	63	56	66	69	63	58	61	53	55	61	62	60	74	64	61	66	68		71	60	57	61	75	--	62	66	56	66	66	60	62	60	64	61	65	63	60
6 Sat	80	67	61	54	65	68	63	59	62	62	54	62	60	58	73	62	59	64	65		70	59	55	61	75	--	64	66	59	66	63	58	62	58	64	62	64	61	56
7 Sun	79	66	60	53	65	69	64	62	65	60	51	57	57	54	73	62	60	65	66		69	58	56	59	73	--	63	64	60	66	64	58	61	59	64	64	64	62	59
8 Mon	79	68	61	57	67	69	66	64	65	59	53	63	61	58	73	63	61	65	67		69	59	55	60	74	--	63	65	56	66	64	59	62	59	64	64	64	60	60
9 Tue	80	66	60	56	65	69	65	61	66	60	56	62	63	58	73	62	60	65	66		69	57	56	60	74	--	61	65	58	66	64	58	61	59	64	63	63	60	60
10 Wed	81	68	62	56	66	69	64	60	62	54	59	65	62	60	75	64	61	66	67		70	59	57	61	75	--	62	66	60	67	65	59	62	60	65	64	65	64	61
11 Thu	78	69	62		63	66	60	55	56	58	60	66	63	60	74	69	68	69	68		70	64	63	67	74	--	68	69		65	64	64	65	59	64	65	62	62	59
12 Fri	79	71	64	57	66	69	64	59	62	59	60	65	65	63	75	68	69	69	70		74	66	62	68	78	--	69	71		70	67	65	67	61	68	66	68	64	63
13 Sat	80	67	61	55	66	69	64	60	64	59	53	59	58	53	71	67	60	63	65		69	58	54	61	74	--	61	65	--	66	65	58	61	58	64	63	64	58	59
14 Sun	80	68	63	56	65	69	64	61	64	55	58	62	64	60	73	63	60	65	66		69	58	57	60	74	--	61	65	--	66	64	59	62	60	64	64	64	61	62
15 Mon	80	68	63	59	65	69	64	66	63	53	58	65	61	58	73	63	61	65	66		69	58	58	61	74	--	63	65	--	67	64	59	62	60	64	64	64	60	60
16 Tue	82	69	64		67	70	64	59	62	55	61	66	61	59	74	63	61	66	67		70	59	58	62	75	--	62	67	--	67	65	60	63	60	65	64	65	62	62
17 Wed	81	68	62	55	67	70	64	60	63	55	59	65	62	62	74	64	62	66	67		70	59	58	61	74	64	61	66	--	66	65	60	62	60	65	64	65	62	61
18 Thu	81	69	63	60	66	70	65	62	68	55	59	63	62	63	75	64	62	67	68		71	60	59	62	75	60	62	67	--	67	65	60	63	60	65	64	65	62	61
19 Fri	81	68	63	57	67	70	65	62	65	56	56	62	61	60	75	64	63	67	68		71	62	58	63	76	63	63	67	--	68	66	61	63	61	66	64	66	63	63
20 Sat	81	68	62	56	67	71	65	62	65	54	58	66	61	58	75	64	62	67	68		69	60	58	61	74	61	61	65	--	66	66	60	62	61	64	64	64	61	61
21 Sun	81	68	62	56	66	70	65	63	66	54	60	67	63	62	75	64	61	67	68		70	59	58	61	74	63	61	65	--	66	66	60	62	60	64	63	65	61	61
22 Mon	81	68	63	58	66	70	67	65	67	60	60	66	65	63	75	64	61	67	68		69	59	58	61	74	63	63	66	--	66	65	59	62	60	64	64	65	61	61
23 Tue	80	68	61	58	66	69	66	64	68	63	58	64	65	61	74	64	61	66	67		69	60	56	60	74	62	63	65	--	66	65	59	61	59	64	66	65	63	61
24 Wed	81	67	61	55	65	69	65	61	64	55	55	61	60	57	72	61	61	64	65		69	59	55	60	74	64	62	65	--	65	63	57	61	58	63	64	64	64	59
25 Thu	78	65	59	46	64	67	63	60	62	58	50	52	49		73	62	59	64	65		66	57	55	59	72	60	59	64	--	63	63	58	60	58	64	63	62	60	58
26 Fri	77	66	59	54	64	68	63	59	63	57	54	59	58	55	70	61	59	64	65		68	56	55	65	72	59	59	64	--	64	63	57	60	58	63	63	62	60	58
27 Sat	78	66	60	54	64	68	63	60	63	55	53	58	59	54	--	62	59	65	66		68	60	56	61	73	61	60	65	--	66	64	57	61	59	63	63	58	61	59
28 Sun	79	67	62	54	65	68	64	61	65	56	61	67	61	58	--	63	60	66	67		69	58	57	61	74	62	61	66	--	66	65	59	62	60	65	63	65	62	61
29 Mon	79	68	64	59	65	69	65	63	66	57	59	65	62	61	--	64	61	66	68		70	59	58	61	74	61	62	66	--	67	66	60	62	60	65	65	65	62	61
30 Tue	79	68	61		66	70	64	63	64	62	58	64	63	61	--	66	66	66	67		69	65	60	65	73	57	68	68	--	65	63	61	65	60	63	66	62	61	59
31 Wed	76	62	54	47	65	68	64	60	63	61	48	48	54	52	72	63	65	64	66		70	65	58	65	75	58	68	69	--	65	63	61	65	58	64	64	63	61	58

\* = Not Required for Title 21 Reporting



Runway Utilization Report  
Summary of Runway Use (Average)

Los Angeles International Airport

Period : 10/01/2014 to 12/31/2014

Airline : ALL

Aircraft : ALL

Time Period	Percent Daily Operations Per Runway								Average Operations	Runway Complex		Runway Flow		In Board	Out Board	
	06L	06R	07L	07R	24L	24R	25L	25R		South	North	West	East			
<b>Departures</b>																
<b>Total Hours</b>																
24 Hours	<1%	2%	2%	<1%	37%	<1%	4%	54%	859	60%	40%	96%	4%	95%	5%	
<b>CNEL Hours</b>																
0700 - 1900	<1%	2%	2%	<1%	42%	1%	3%	50%	595	55%	45%	97%	3%	95%	5%	
1900 - 2200	<1%	2%	3%	<1%	39%	<1%	4%	52%	106	59%	41%	95%	5%	96%	4%	
2200 - 0700	<1%	1%	3%	<1%	19%	<1%	6%	70%	158	79%	21%	96%	4%	93%	7%	
<b>Contra Hours</b>																
Midnight - 0630	<1%	<1%	3%	<1%	10%	<1%	10%	76%	76	89%	11%	96%	4%	89%	11%	
0630 - Midnight	<1%	2%	2%	<1%	40%	<1%	3%	52%	782	57%	43%	96%	4%	96%	4%	
<b>Arrivals</b>																
<b>Total Hours</b>																
24 Hours	2%	3%	1%	2%	2%	42%	47%	2%	856	52%	48%	92%	8%	7%	93%	
<b>CNEL Hours</b>																
0700 - 1900	1%	<1%	<1%	2%	2%	45%	49%	2%	580	52%	48%	97%	3%	4%	96%	
1900 - 2200	2%	<1%	<1%	2%	2%	46%	46%	2%	163	50%	50%	96%	4%	4%	96%	
2200 - 0700	6%	19%	8%	5%	<1%	24%	37%	1%	114	51%	49%	63%	37%	29%	71%	
<b>Contra Hours</b>																
Midnight - 0630	10%	48%	21%	8%	<1%	4%	8%	<1%	44	38%	62%	13%	87%	69%	31%	
0630 - Midnight	2%	<1%	<1%	2%	2%	44%	49%	2%	812	52%	48%	96%	4%	4%	96%	

All values are rounded to the nearest whole number.



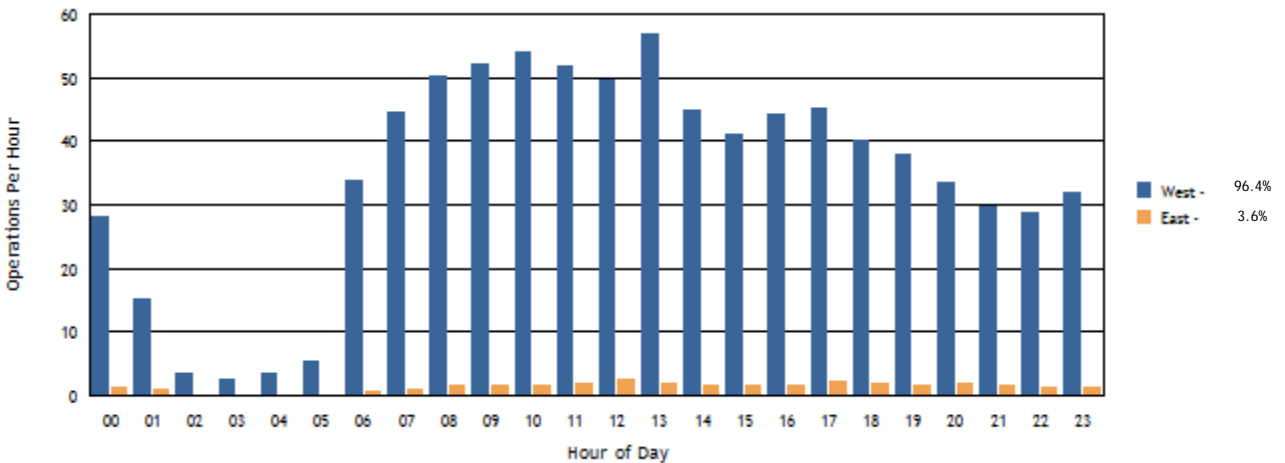
Runway Utilization Report  
 Summary of Runway Flow (Average)  
 Los Angeles International Airport

Period: 10/01/2014 to 12/31/2014  
 Airline : ALL  
 Aircraft : ALL

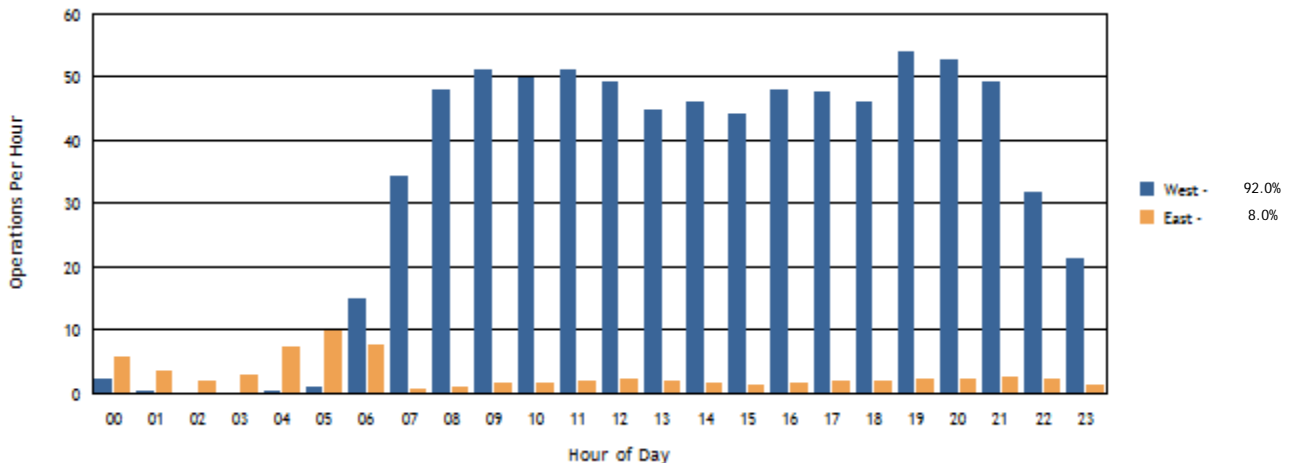
Time Period	Departures			Arrivals			Departures		Arrivals	
	West	East	Average	West	East	Average	West	East	West	East
<b>Total Hours</b>										
24 Hours	828	31	859	787	69	856	96%	4%	92%	8%
<b>CNEL Hours</b>										
0700-1900	575	20	595	560	20	580	97%	3%	97%	3%
1900-2200	101	5	106	156	7	163	95%	5%	96%	4%
2200-0700	152	6	158	72	42	114	96%	4%	63%	37%
<b>Contra Hours</b>										
Midnight - 0630	74	3	76	6	38	44	96%	4%	13%	87%
0630 - Midnight	754	28	782	782	31	812	96%	4%	96%	4%

All percentages are rounded to the nearest whole number.

Departures Per Hour by Operational Direction



Arrivals Per Hour by Operational Direction





## **Summary of Actions Taken by LAWA to Comply with the Specific Requirements Imposed by Conditions of the Current Noise Variance for Los Angeles International Airport**

Fourth Quarter 2014

The Los Angeles World Airports (LAWA) continuously works to operate an airport that maintains the highest possible environmental quality of life for surrounding communities. To that end, LAWA continues to take the following actions:

- LAWA continues to implement its Aircraft Noise Mitigation Program (ANMP), designed to fund the mitigation of all incompatible land uses within the noise impact boundary as defined in the State Noise Standards. LAWA updates the ANMP report periodically to ensure that it reasonably represents the mitigation and funding programs that are in place.
- With each second quarter Quarterly Report, LAWA submits an annual update of the ANMP. This update includes the number of dwellings acoustically insulated, the cost of the program, the anticipated funding availability, and the anticipated completion date of the project.
- LAWA continues to monitor and enforce, as appropriate, all of its informal noise abatement procedures in place at LAX, including but not limited to the early turn program, preferential runway use procedures and over ocean operations procedures.
- LAWA continues to work with Federal Aviation Administration and pilots to improve compliance with its “no turns before the shoreline” policy.
- LAWA will conduct the design study for the proposed development of two Ground Run-up Enclosures within the five-year time frame.
- LAWA analyzed the implementation of the existing Preferential Runway Use Policy and submitted a report evaluating compliance and implementation of the policy, including recommendations for any possible improvements.

- LAWA continues to submit to the State of California Department of Transportation (CalTrans) and the County of Los Angeles the required Quarterly Reports. These reports depict the noise impact area, and report on the incompatible land uses along with the daily and annual CNEL values at each monitoring station.
- LAWA has not submitted “any proposed new or modified noise monitoring plan or system” to Caltrans during this Variance period and, therefore, has not needed to provide a copy to the County. The existing airport noise and operations monitoring system was certified by Caltrans in February 2010 and the County was provided with all submitted documentation at that time. The County continues to review and audit the data LAWA submits in each Quarterly Report.
- LAWA continues to include tabular data and graphical illustrations with each Quarterly Report describing and comparing the level and type of usage for each runway at LAX during the quarter.
- LAWA continues to monitor and enforce its maintenance run-up curfew (2300-0600). Below is information regarding monitoring and enforcement activities undertaken during the quarter:
  - On December 28, 2015, Air New Zealand requested an extended, high power engine run-up at 11:00 p.m. to test a B777 aircraft with a fuel pump problem. LAX Airport Operations allowed the engine run-up at the Qantas blast fence on the north side of the airfield, which concluded at midnight. LAX Airport Operations senior management reinforced the LAWA maintenance curfew requirements with LAWA staff to eliminate such deviations going forward.
- LAWA continues to provide a live answered noise complaint hotline as appropriate. Unanswered calls are retrieved, lodged, and responded to in a timely manner.
- LAWA’s aircraft noise and operations monitoring system continues to measure noise levels for all operations at LAX, including the Airbus A380 and the Boeing 747-800. This data is currently available and was presented to the LAX/Community Noise Roundtable and the LAX Area Advisory Committee.