

# California State Airport Noise Standards Quarterly Report

Fourth Quarter 2021



LOS ANGELES INTERNATIONAL AIRPORT

Los Angeles World Airports

March 8, 2022

## **TABLE OF CONTENTS**

---

### California State Airport Noise Standards Quarterly Report

1. Division of Aeronautics Form 617
2. Incompatible Land Use Data
3. Daily Aircraft CNEL Data
4. Runway Utilization Report
  - Summary of Runway Use
  - Summary of Runway Flow
5. Average Daily Runway Use by Aircraft Type
  - 24 Hour Average
  - Night-time Average (10pm – 7am)
6. Average Daily Runway Use by Aircraft Group
  - 24 Hour Average
  - Night-time Average (10pm – 7am)
7. Summary of Actions

### Attachment

Noise contour map

**SUMMARY OF STATISTICAL INFORMATION  
FOR  
CALIFORNIA DEPARTMENT OF TRANSPORTATION**

Los Angeles International Airport  
Fourth Quarter 2021

1. Size of Noise Impact Area as defined in the Noise Standards (California Code of Regulations, Title 21, Chapter 2.5, Subchapter 6):

**375.1 Acres**

---

2. Estimated number of dwelling units included in the Noise Impact Area as defined in the Noise Standards:

**4,760**

---

3. Estimated number of people residing within the Noise Impact Area as defined in the Noise Standards:

**18,327**

---

4. Identification of aircraft type having highest takeoff noise level operating at this airport together with estimated number of operations by this aircraft type during the calendar quarter reporting period:

**B747: 3,553**

---

5. Total number of aircraft operations during the calendar quarter\*:

**143,884**

---

6. Number of Air Carrier operations during the calendar quarter: (Not Mandatory)\*

**131,821**

---

7. Percentage of Air Carrier operations by aircraft certificated under Federal Aviation Regulation (FAR) Part 36, Stage III. (Not Mandatory)

**100 %**

---

8. Estimated number of operations by General Aviation aircraft during the calendar quarter: (Not Mandatory)\*

**4,342**

---

9. Estimated number of operations by Military aircraft during the calendar quarter: (Not Mandatory)\*

**90**

---

# LOS ANGELES INTERNATIONAL AIRPORT

## Incompatible Land Use

### Annual Noise Impact Accumulated by Noise Zone: CNEL 65, 70, and 75 +

<b>4Q21</b>	<b>Total Cumulative Noise Impact Areas - All Jurisdictions</b>											
	<i>CNEL 65 dB and Above</i>				<i>CNEL 70 dB and Above</i>				<i>CNEL 75 dB and Above</i>			
Land Use	Acres	Dwelling Units	Parcels	Population	Acres	Dwelling Units	Parcels	Population	Acres	Dwelling Units	Parcels	Population
Single Family	187.1	1,286	1,313	4,915	33.6	221	224	1,018	0.0	0	0	0
Multi-Family	167.4	3,462	1,040	13,378	36.2	660	250	2,709	0.0	0	0	0
Mobile Home	0.6	0	2	0	0.0	0	0	0	0.0	0	0	0
Schools	5.0	0	23	0	3.0	0	17	0	0.0	0	0	0
Churches	15.0	12	30	34	2.4	0	2	0	0.0	0	0	0
Hospitals	0.0	0	0	0	0.0	0	0	0	0.0	0	0	0
<b>Total Incompatible</b>	<b>375.1</b>	<b>4,760</b>	<b>2,408</b>	<b>18,327</b>	<b>75.2</b>	<b>881</b>	<b>493</b>	<b>3,727</b>	<b>0.0</b>	<b>0</b>	<b>0</b>	<b>0</b>

Note: Parcels and dwelling units may not match for single family land uses due to subdivision.  
Parcels for multifamily land uses reflect only the common area parcel, except for condominiums.

Report Date: 03/03/2022

# LOS ANGELES INTERNATIONAL AIRPORT

## Incompatible Land Use

### Annual Noise Impact Accumulated by Noise Zone: CNEL 65, 70, and 75 +

<b>4Q21</b>	<b>Total Cumulative Noise Impact Areas - Athens</b>											
	<i>CNEL 65 dB and Above</i>				<i>CNEL 70 dB and Above</i>				<i>CNEL 75 dB and Above</i>			
	Land Use	Acres	Dwelling Units	Parcels	Population	Acres	Dwelling Units	Parcels	Population	Acres	Dwelling Units	Parcels
Single Family	17.4	134	147	500	0.0	0	0	0	0.0	0	0	0
Multi-Family	17.6	320	124	1,143	0.0	0	0	0	0.0	0	0	0
Mobile Home	0.0	0	0	0	0.0	0	0	0	0.0	0	0	0
Schools	0.0	0	0	0	0.0	0	0	0	0.0	0	0	0
Churches	1.0	3	5	11	0.0	0	0	0	0.0	0	0	0
Hospitals	0.0	0	0	0	0.0	0	0	0	0.0	0	0	0
<b>Total Incompatible</b>	<b>36.0</b>	<b>457</b>	<b>276</b>	<b>1,654</b>	<b>0.0</b>	<b>0</b>	<b>0</b>	<b>0</b>	<b>0.0</b>	<b>0</b>	<b>0</b>	<b>0</b>

Note: Parcels and dwelling units may not match for single family land uses due to subdivision.  
 Parcels for multifamily land uses reflect only the common area parcel, except for condominiums.

Report Date: 03/03/2022

# LOS ANGELES INTERNATIONAL AIRPORT

## Incompatible Land Use

### Annual Noise Impact Accumulated by Noise Zone: CNEL 65, 70, and 75 +

<b>4Q21</b>	<b>Total Cumulative Noise Impact Areas - Del Aire</b>											
	<i>CNEL 65 dB and Above</i>				<i>CNEL 70 dB and Above</i>				<i>CNEL 75 dB and Above</i>			
	Land Use	Acres	Dwelling Units	Parcels	Population	Acres	Dwelling Units	Parcels	Population	Acres	Dwelling Units	Parcels
Single Family	0.0	0	0	0	0.0	0	0	0	0.0	0	0	0
Multi-Family	0.0	0	0	0	0.0	0	0	0	0.0	0	0	0
Mobile Home	0.0	0	0	0	0.0	0	0	0	0.0	0	0	0
Schools	0.0	0	0	0	0.0	0	0	0	0.0	0	0	0
Churches	0.0	0	0	0	0.0	0	0	0	0.0	0	0	0
Hospitals	0.0	0	0	0	0.0	0	0	0	0.0	0	0	0
<b>Total Incompatible</b>	<b>0.0</b>	<b>0</b>	<b>0</b>	<b>0</b>	<b>0.0</b>	<b>0</b>	<b>0</b>	<b>0</b>	<b>0.0</b>	<b>0</b>	<b>0</b>	<b>0</b>

Note: Parcels and dwelling units may not match for single family land uses due to subdivision.  
 Parcels for multifamily land uses reflect only the common area parcel, except for condominiums.

Report Date: 03/03/2022

# LOS ANGELES INTERNATIONAL AIRPORT

## Incompatible Land Use

### Annual Noise Impact Accumulated by Noise Zone: CNEL 65, 70, and 75 +

<b>4Q21</b>	<b>Total Cumulative Noise Impact Areas - City of El Segundo</b>											
	<i>CNEL 65 dB and Above</i>				<i>CNEL 70 dB and Above</i>				<i>CNEL 75 dB and Above</i>			
	Land Use	Acres	Dwelling Units	Parcels	Population	Acres	Dwelling Units	Parcels	Population	Acres	Dwelling Units	Parcels
Single Family	57.4	375	377	983	3.1	19	19	44	0.0	0	0	0
Multi-Family	14.9	411	161	919	4.9	186	86	408	0.0	0	0	0
Mobile Home	0.0	0	0	0	0.0	0	0	0	0.0	0	0	0
Schools	0.0	0	0	0	0.0	0	0	0	0.0	0	0	0
Churches	0.7	0	2	0	0.0	0	0	0	0.0	0	0	0
Hospitals	0.0	0	0	0	0.0	0	0	0	0.0	0	0	0
<b>Total Incompatible</b>	<b>73.0</b>	<b>786</b>	<b>540</b>	<b>1,903</b>	<b>8.0</b>	<b>205</b>	<b>105</b>	<b>453</b>	<b>0.0</b>	<b>0</b>	<b>0</b>	<b>0</b>

Note: Parcels and dwelling units may not match for single family land uses due to subdivision.  
Parcels for multifamily land uses reflect only the common area parcel, except for condominiums.

Report Date: 03/03/2022

# LOS ANGELES INTERNATIONAL AIRPORT

## Incompatible Land Use

### Annual Noise Impact Accumulated by Noise Zone: CNEL 65, 70, and 75 +

<b>4Q21</b>	<b>Total Cumulative Noise Impact Areas - City of Inglewood</b>											
	<i>CNEL 65 dB and Above</i>				<i>CNEL 70 dB and Above</i>				<i>CNEL 75 dB and Above</i>			
	Land Use	Acres	Dwelling Units	Parcels	Population	Acres	Dwelling Units	Parcels	Population	Acres	Dwelling Units	Parcels
Single Family	59.4	412	419	1,680	0.8	6	6	26	0.0	0	0	0
Multi-Family	86.1	1,991	468	7,814	2.7	84	13	390	0.0	0	0	0
Mobile Home	0.6	0	2	0	0.0	0	0	0	0.0	0	0	0
Schools	0.0	0	0	0	0.0	0	0	0	0.0	0	0	0
Churches	8.0	6	13	13	2.1	0	1	0	0.0	0	0	0
Hospitals	0.0	0	0	0	0.0	0	0	0	0.0	0	0	0
<b>Total Incompatible</b>	<b>154.1</b>	<b>2,409</b>	<b>902</b>	<b>9,507</b>	<b>5.6</b>	<b>90</b>	<b>20</b>	<b>416</b>	<b>0.0</b>	<b>0</b>	<b>0</b>	<b>0</b>

Note: Parcels and dwelling units may not match for single family land uses due to subdivision.  
Parcels for multifamily land uses reflect only the common area parcel, except for condominiums.

Report Date: 03/03/2022



# LOS ANGELES INTERNATIONAL AIRPORT

## Incompatible Land Use

### Annual Noise Impact Accumulated by Noise Zone: CNEL 65, 70, and 75 +

<b>4Q21</b>	<b>Total Cumulative Noise Impact Areas - Lennox</b>											
	<i>CNEL 65 dB and Above</i>				<i>CNEL 70 dB and Above</i>				<i>CNEL 75 dB and Above</i>			
	Land Use	Acres	Dwelling Units	Parcels	Population	Acres	Dwelling Units	Parcels	Population	Acres	Dwelling Units	Parcels
Single Family	52.9	365	370	1,752	29.8	196	199	948	0.0	0	0	0
Multi-Family	48.8	740	287	3,501	28.6	390	151	1,911	0.0	0	0	0
Mobile Home	0.0	0	0	0	0.0	0	0	0	0.0	0	0	0
Schools	5.0	0	23	0	3.0	0	17	0	0.0	0	0	0
Churches	1.6	1	3	4	0.3	0	1	0	0.0	0	0	0
Hospitals	0.0	0	0	0	0.0	0	0	0	0.0	0	0	0
<b>Total Incompatible</b>	<b>108.3</b>	<b>1,106</b>	<b>683</b>	<b>5,258</b>	<b>61.7</b>	<b>586</b>	<b>368</b>	<b>2,859</b>	<b>0.0</b>	<b>0</b>	<b>0</b>	<b>0</b>

Note: Parcels and dwelling units may not match for single family land uses due to subdivision.  
Parcels for multifamily land uses reflect only the common area parcel, except for condominiums.

Report Date: 03/03/2022

# LOS ANGELES INTERNATIONAL AIRPORT

## Incompatible Land Use

### Annual Noise Impact Accumulated by Noise Zone: CNEL 65, 70, and 75 +

<b>4Q21</b>	<b>Total Cumulative Noise Impact Areas - South and South East LA</b>											
	<i>CNEL 65 dB and Above</i>				<i>CNEL 70 dB and Above</i>				<i>CNEL 75 dB and Above</i>			
Land Use	Acres	Dwelling Units	Parcels	Population	Acres	Dwelling Units	Parcels	Population	Acres	Dwelling Units	Parcels	Population
Single Family	0.0	0	0	0	0.0	0	0	0	0.0	0	0	0
Multi-Family	0.0	0	0	0	0.0	0	0	0	0.0	0	0	0
Mobile Home	0.0	0	0	0	0.0	0	0	0	0.0	0	0	0
Schools	0.0	0	0	0	0.0	0	0	0	0.0	0	0	0
Churches	2.4	1	6	4	0.0	0	0	0	0.0	0	0	0
Hospitals	0.0	0	0	0	0.0	0	0	0	0.0	0	0	0
<b>Total Incompatible</b>	<b>2.4</b>	<b>1</b>	<b>6</b>	<b>4</b>	<b>0.0</b>	<b>0</b>	<b>0</b>	<b>0</b>	<b>0.0</b>	<b>0</b>	<b>0</b>	<b>0</b>

Note: Parcels and dwelling units may not match for single family land uses due to subdivision.  
Parcels for multifamily land uses reflect only the common area parcel, except for condominiums.

Report Date: 03/03/2022

# LOS ANGELES INTERNATIONAL AIRPORT

## Incompatible Land Use

### Annual Noise Impact Accumulated by Noise Zone: CNEL 65, 70, and 75 +

<b>4Q21</b>	<b>Total Cumulative Noise Impact Areas - Westchester/Playa Del Rey</b>											
	<i>CNEL 65 dB and Above</i>				<i>CNEL 70 dB and Above</i>				<i>CNEL 75 dB and Above</i>			
	Land Use	Acres	Dwelling Units	Parcels	Population	Acres	Dwelling Units	Parcels	Population	Acres	Dwelling Units	Parcels
Single Family	0.0	0	0	0	0.0	0	0	0	0.0	0	0	0
Multi-Family	0.0	0	0	0	0.0	0	0	0	0.0	0	0	0
Mobile Home	0.0	0	0	0	0.0	0	0	0	0.0	0	0	0
Schools	0.0	0	0	0	0.0	0	0	0	0.0	0	0	0
Churches	1.3	1	1	2	0.0	0	0	0	0.0	0	0	0
Hospitals	0.0	0	0	0	0.0	0	0	0	0.0	0	0	0
<b>Total Incompatible</b>	<b>1.3</b>	<b>1</b>	<b>1</b>	<b>2</b>	<b>0.0</b>	<b>0</b>	<b>0</b>	<b>0</b>	<b>0.0</b>	<b>0</b>	<b>0</b>	<b>0</b>

Note: Parcels and dwelling units may not match for single family land uses due to subdivision.  
Parcels for multifamily land uses reflect only the common area parcel, except for condominiums.

Report Date: 03/03/2022



October	AIR1	PDR1	PDR2	ESG1	ESG2	ESG3	ESG5	DEL1*	WCH2	WCH3	WCH5	WCH6	ING1	ING2	ING3	ING6	ING8	LNX1	LNX2	LNX3	LNX4	ATH2	SLA1	SLA3	SLA5	SLA7	
1	Fri	--	68	62	63	66	62	58	56	65	65	73	63	58	66	67	69	60	73	63	63	66	66	63	62	64	64
2	Sat	--	67	61	64	67	64	65	60	62	64	72	62	63	64	64	69	59	74	63	60	65	65	62	61	64	64
3	Sun	--	67	62	63	66	63	64	59	64	63	73	62	59	65	66	68	61	73	60	61	64	64	64	59	62	64
4	Mon	--	67	63	63	67	62	63	61	63	63	72	65	58	65	68	68	62	74	65	63	65	64	62	63	62	64
5	Tue	--	68	63	--	68	63	62	55	61	61	74	63	59	66	70	70	60	76	66	65	67	67	65	64	65	66
6	Wed	--	66	61	--	68	62	57	50	61	60	72	62	59	64	65	68	59	74	63	62	65	66	63	61	63	64
7	Thu	--	68	62	64	69	63	57	44	61	58	73	62	59	65	67	69	54	74	61		65	66	64	62	64	64
8	Fri	--	67	62	66	69	64	58	49	63	62	73	62	59	65	66	69	59	75	61	62	65	66	65	62	65	65
9	Sat	--	67	61	66	68	62	59	55	63	61	72	62	59	65	66	68	58	74	62	62	64	65	64	64	64	64
10	Sun	--	67	62	64	67	62	59	52	63	63	73	62	60	66	66	68	55	74	61	62	65	65	64	61	63	64
11	Mon	--	67	62	66	67	63	60	56	63	60	73	63	59	65	66	67	57	73	60	61	64	65	64	61	64	60
12	Tue	--	67	61	65	66	63	62	61	58	61	72	61	59	64	67	68	61	73	63	62	64	66	63	61	63	--
13	Wed	--	67	61	64	67	62	62	58	63	62	72	61	59	64	65	68	57	74	61	63	65	65	63	61	63	65
14	Thu	--	68	63	65	67	62	62	59	67	66	73	62	59	65	66	68	58	74	61	62	64	65	64	62	63	63
15	Fri	--	67	62	63	66	63	66	65	62	65	72	62	58	64	65	68	59	75	62	64	65	66	63	62	64	64
16	Sat	--	64	57	61	65	61	62	62	61	61	71	63	57	63	63	66	56	--	61	65	63	64	61	59	63	--
17	Sun	--	68	63	64	67	61	58	55	63	62	73	63	60	66	67	69	58	--	62	64	66	66	65	62	64	--
18	Mon	--	67	63	65	67	61	58	50	65	60	73	62	60	65	66	68	57	--	62	61	65	66	65	62	64	--
19	Tue	--	67	62	64	67	61	58	52	63	61	72	62	58	65	66	68	60	--	61	63	65	65	65	62	63	--
20	Wed	--	67	61	65	67	61	56	51	65	64	72	62	59	65	67	68	60	--	61	62	64	65	64	61	64	--
21	Thu	--	67	61	64	67	61	57	55	64	61	73	62	58	65	66	69	54	76	60	62	64	65	64	61	63	66
22	Fri	--	69	62	64	67	62	57	48	60	58	74	63	59	66	67	70	61	77	63	63	67	67	64	63	65	65
23	Sat	--	67	61	65	68	61	59	65	60	57	72	61	58	65	66	69	59	74	61	63	65	66	66	62	63	66
24	Sun	--	69	63	65	67	61	58	60	63	61	73	63	59	66	67	68	58	74	61	65	64	66	65	61	63	64
25	Mon	--	68	63	65	68	62	61	58	63	62	73	64	61	66	67	70	61	74	63		66	65	65	62	64	64
26	Tue	--	66	62	65	68	64	63	61	65	60	72	62	58	65	66	68	60	73	60	62	64	66	64	62	63	64
27	Wed	--	67	62	66	68	64	65	61	63	65	72	61	58	64	65	67	62	73	59	62	64	60	63	60	63	63
28	Thu	--	68	64	66	68	65	66	65	65	64	73	63	60	65	66	69	59	75	61	57	65	--	64	62	64	67
29	Fri	--	66	60	64	67	63	63	63	64	62	73	62	58	65	66	68	56	74	62	62	64	--	65	61	63	64
30	Sat	--	67	61	62	66	58	55	46	59	57	72	62	58	65	66	70	56	75	62	62	66	--	64	62	64	64
31	Sun	--	66	61	65	68	61	57	47	59	57	72	61	59	65	67	68	61	--	60		64	--	64	61	64	64

\* = Not Required for Title 21 Reporting



November	AIR1	PDR1	PDR2	ESG1	ESG2	ESG3	ESG5	DEL1*	WCH2	WCH3	WCH5	WCH6	ING1	ING2	ING3	ING6	ING8	LNX1	LNX2	LNX3	LNX4	ATH2	SLA1	SLA3	SLA5	SLA7
1 Mon	--	68	63	66	68	63	59	58	62	60	73	63	63	66	67	68	60		61	59	65	--	65	61	63	64
2 Tue	--	65	59	64	67	61	58	53	61	58	73	62	59	65	66	67	63	74	61	64	64	66	63	60	62	63
3 Wed	--	66	59	61	65	57	55	50	59	59	73	62	57	64	65	69	57	77	63	64	67	66	63	62	64	64
4 Thu	--	68	62	63	65	60	55	49	64	60	73	62	59	65	67	69	58	76	62	62	66	66	65	62	64	65
5 Fri	--	66	58	62	64	59	54	48	61	58	74	63	60	65	67	69	60	76	62	62	66	66	64	63	64	64
6 Sat	--	68	62	63	66	59	56	47	60	57	73	62	58	65	66	70	58	76	63	64	66	69	63	62	63	64
7 Sun	--	69	63	63	67	60	58	48	63	59	74	63	61	66	67	70	60	77	63	62	67	67	65	63	63	65
8 Mon	--	67	62	65	68	61	56	47	63	61	73	62	59	65	66	69	57	74	61	63	65	66	65	63	63	65
9 Tue	--	67	61	64	67	61	58	52	60	57	72	62	58	65	66	68	60	74	60	63	65	65	64	61	63	64
10 Wed	--	68	62	64	67	64	64	64	63	62	73	62	59	65	67	69	63	74	65	63	65	67	64	62	65	65
11 Thu	--	66	60	64	67	64	64	66	62	63	71	61	59	64	65	67	58	69	60	63	63	65	63	60	64	63
12 Fri	--	66	60	63	66	62	64	65	60	63	72	61	59	67	66	70	62	--	63	64	66	67	64	63	65	65
13 Sat	--	66	60	63	66	62	64	71	59	59	71	60	57	63	64	67	59	--	60	64	63	65	63	60	63	63
14 Sun	--	67	61	65	67	63	63	65	64	63	72	62	59	65	66	68	59	--	61	63	64	65	64	60	63	63
15 Mon	--	67	61	65	67	62	60	55	63	58	73	63	60	65	66	69	60	77	61	62	65	66	64	62	63	64
16 Tue	--	68	63	63	66	60	57	49	62	57	73	62	59	65	68	70	62	77	64	62	67	67	64	63	64	66
17 Wed	--	68	62	65	68	62	59	49	60	64	73	62	63	65	66	69	60	74	61	63	65	66	65	62	63	64
18 Thu	--	68	63	65	68	62	58	49	64	61	74	63	60	66	67	69	61	75	62	63	66	67	65	62	63	65
19 Fri	--	69	62	68	68	63	58	48	61	59	74	63	62	67	72	69	61	75	62		65	66	65	63	63	64
20 Sat	--	68	62	65	68	63	64	53	61	59	73	62	61	65	66	68	61	74	64	63	64	65	64	63	62	65
21 Sun	--	66	59	64	67	63	64	64	63	63	70	60	56	62	66	66	57	68	58	59	61	63	62	58	60	62
22 Mon	--	65	60	63	66	63	64	61	64	61	71	61	58	63	65	67	58	--	61	62	63	63	62	59	61	64
23 Tue	--	67	62	65	68	63	62	59	66	62	73	62	60	65	66	68	60	76	60	62	65	66	64	62	63	64
24 Wed	--	67	60	65	68	64	64	63	63	61	72	61	58	64	65	67	59	73	60	62	63	65	63	60	62	63
25 Thu	--	60	53	59	63	58	57	58	55	60	68	56	57	59	60	62	54	69	55		58	59	59	56	58	59
26 Fri	--	63	56	60	64	61	62	62	61	61	70	59	55	63	63	66	58	72	60		61	62	60	57	60	59
27 Sat	--	66	60	62	65	61	61	61	61	63	72	61	59	64	66	70	60	74	60		64	64	63	60	62	63
28 Sun	--	67	62	66	68	64	63	60	65	64	72	62	59	62	65	68	59	74	61		65	65	62	60	62	62
29 Mon	--	66	61	65	67	63	62	59	62	62	73	62	59	62	65	68	62	74	61		65	64	62	61	62	63
30 Tue	--	68	62	64	67	62	61	61	63	63	73	64	59	65	67	71	63	77	64		68	68	64	64	64	66

\* = Not Required for Title 21 Reporting



December	AIR1	PDR1	PDR2	ESG1	ESG2	ESG3	ESG5	DEL1*	WCH2	WCH3	WCH5	WCH6	ING1	ING2	ING3	ING6	ING8	LNX1	LNX2	LNX3	LNX4	ATH2	SLA1	SLA3	SLA5	SLA7
1 Wed	--	66	59	62	65	59	61	54	61	60	72	62	58	60	66	70	61	77	63		67	67	62	63	64	65
2 Thu	--	69	63	64	68	62	57	46	60	56	73	63	59	--	67	71	62	77	64		68	67	64	63	64	65
3 Fri	--	68	62	66	68	63	59	49	61	59	73	62	59	67	67	69	62	75	64		66	67	65	63	64	65
4 Sat	--	68	62	65	68	62	58	55	62	64	72	62	59	65	66	69	60	75	61		66	66	64	62	64	64
5 Sun	--	66	62	65	68	61	58	47	60	60	72	61	58	64	67	68	59	73	61		64	65	64	61	62	63
6 Mon	--	--	64	65	68	63	61	60	63	60	72	62	59	65	65	69	60	74	60		65	67	64	62	62	64
7 Tue	--	--	62	65	68	62	59	53	62	60	71	61	58	64	66	69	60	74	58		65	66	63	62	63	65
8 Wed	--	--	63	67	68	62	60	58	61	59	73	62	59	65	67	70	62	75	63		66	69	64	62	64	65
9 Thu	--	--	62	66	68	63	61	62	60	58	74	64	61	67	67	69	62	75	61		66	67	65	64	65	66
10 Fri	--	--	62	66	69	65	65	62	60	58	72	62	59	65	67	69	61	74	62		65	66	64	62	64	65
11 Sat	--	--	60	64	68	63	64	62	59	56	72	61	59	64	65	67	59	72	60		63	65	63	60	62	63
12 Sun	--	--	62	65	68	64	63	58	63	62	73	63	60	66	67	69	61	74	61		65	66	65	62	64	65
13 Mon	--	--	63	66	68	62	62	55	65	62	72	62	59	65	66	68	61	74	59		64	66	64	61	63	64
14 Tue	--	--	63	66	67	62	61	60	64	62	73	67	65	66	66	71	65	76			69	65	64	65	63	63
15 Wed	--	--	61	66	69	64	64	63	60	59	72	62	61	65	66	68	61	67	62		65	66	64	62	64	64
16 Thu	--	--	64	67	70	66	65	60	63	59	73	63	61	66	67	73	62	73	61		65	66	66	63	63	64
17 Fri	--	67	61	66	69	65	65	62	61	61	73	63	61	66	67	68	62	74	61		64	65	65	62	64	65
18 Sat	--	66	61	65	68	65	66	64	60	59	73	62	62	65	66	67	59	73	60		64	68	64	60	63	64
19 Sun	--	68	62	65	68	65	66	65	63	65	73	63	62	65	67	68	60	73	61		64	65	64	62	63	63
20 Mon	--	67	63	66	69	64	63	62	63	64	73	63	61	65	64	67	59	72	61		64	65	64	61	63	63
21 Tue	--	67	62	64	68	63	62	58	64	63	73	64	60	66	67	68	60	73	66		64	65	64	62	63	63
22 Wed	--	68	62	70	69	63	62	58	65	63	73	63	60	65	66	68	60	73	60		64	65	64	61	63	64
23 Thu	--	69	64	65	66	60	59	62	66	66	73	71	68	68	67	70	68	73	--	--	70	65	62	66		62
24 Fri	--	68	63	66	67	62	60	60	64	63	74	68	67	67	68	72	65	78	63		71	68	65	67	65	67
25 Sat	--	68	62	64	67	61	54	45	64	64	73	63	60	65	66	68	61	73	56		64	65	64	61	63	64
26 Sun	--	69	63	66	68	63	61	58	63	62	74	64	62	67	68	71	62	76	62		67	68	66	64	66	68
27 Mon	--	68	63	66	68	64	61	57	65	63	72	62	61	65	66	69	62	74	61		65	65	64	61	63	63
28 Tue	--	69	64	66	68	64	62	58	66	64	74	64	63	67	69	71	64	77	62		69	69	66	65	67	67
29 Wed	--	67	62	65	66	61	60	61	67	64	71	70	67	67	65	70	66	73	69		69	64	60	66		61
30 Thu	--	68	64	65	67	62	63	65	66	65	73	71	70	68	68	72	69	76		--	73	66	63	69		63
31 Fri	--	67	62	66	67	64	65	65	62	62	73	66	66	66	67	70	64	76	69		69	68	65	68	64	68

\* = Not Required for Title 21 Reporting



Runway Utilization Report  
**Summary of Runway Use (Average)**  
 Los Angeles International Airport

Period : 10/01/2021 to 12/31/2021  
 Airline : ALL  
 Aircraft : ALL

Time Period	Percent Daily Operations Per Runway								Average Operations	Runway Complex		Runway Flow		In Board	Out Board	
	06L	06R	07L	07R	24L	24R	25L	25R		South	North	West	East			
<b>Departures</b>																
<b>Total Hours</b>																
24 Hours	<1%	1%	2%	<1%	37%	<1%	5%	55%	776	62%	38%	96%	4%	95%	5%	
<b>CNEL Hours</b>																
0700 - 1900	<1%	1%	2%	<1%	41%	<1%	4%	51%	521	58%	42%	97%	3%	95%	5%	
1900 - 2200	<1%	2%	2%	<1%	40%	<1%	5%	51%	98	58%	42%	96%	4%	95%	5%	
2200 - 0700	0%	1%	3%	<1%	22%	<1%	5%	68%	158	76%	24%	96%	4%	95%	5%	
<b>Contra Hours</b>																
Midnight - 0630	0%	1%	3%	<1%	9%	<1%	9%	78%	79	90%	10%	96%	4%	91%	9%	
0630 - Midnight	<1%	1%	2%	<1%	40%	<1%	4%	52%	697	58%	42%	96%	4%	96%	4%	
<b>Arrivals</b>																
<b>Total Hours</b>																
24 Hours	2%	4%	<1%	2%	<1%	42%	49%	<1%	776	51%	49%	92%	8%	5%	95%	
<b>CNEL Hours</b>																
0700 - 1900	2%	<1%	<1%	2%	<1%	46%	50%	<1%	516	52%	48%	96%	4%	1%	99%	
1900 - 2200	2%	0%	0%	2%	<1%	45%	51%	<1%	133	53%	47%	97%	3%	<1%	99%	
2200 - 0700	4%	24%	<1%	3%	<1%	26%	42%	<1%	126	46%	54%	69%	31%	25%	75%	
<b>Contra Hours</b>																
Midnight - 0630	7%	63%	2%	4%	<1%	4%	19%	1%	47	26%	74%	25%	75%	67%	33%	
0630 - Midnight	2%	<1%	<1%	2%	<1%	45%	51%	<1%	729	53%	47%	96%	4%	<1%	99%	

All values are rounded to the nearest whole number.



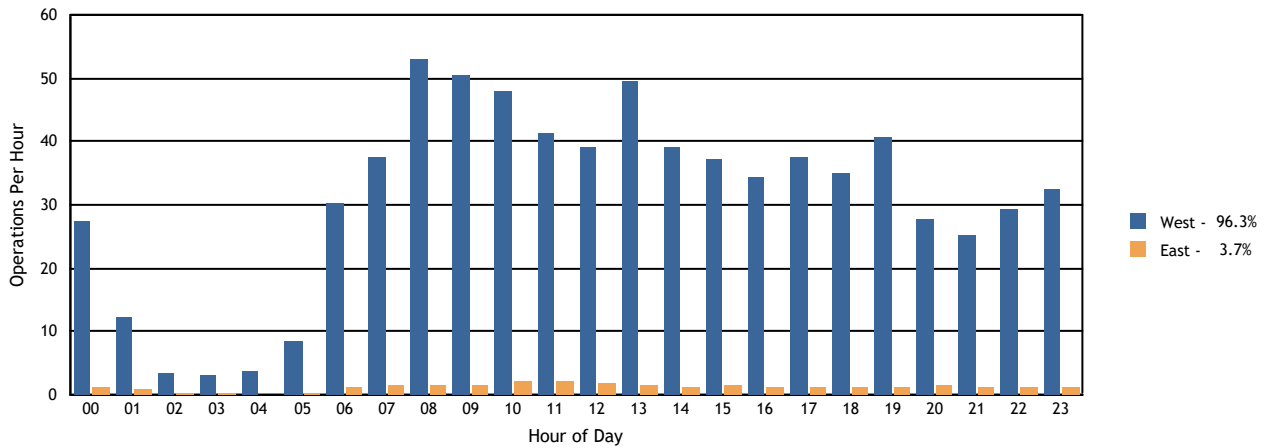
Runway Utilization Report  
 Summary of Runway Flow (Average)  
 Los Angeles International Airport

Period: 10/01/2021 to 12/31/2021  
 Airline : ALL  
 Aircraft : ALL

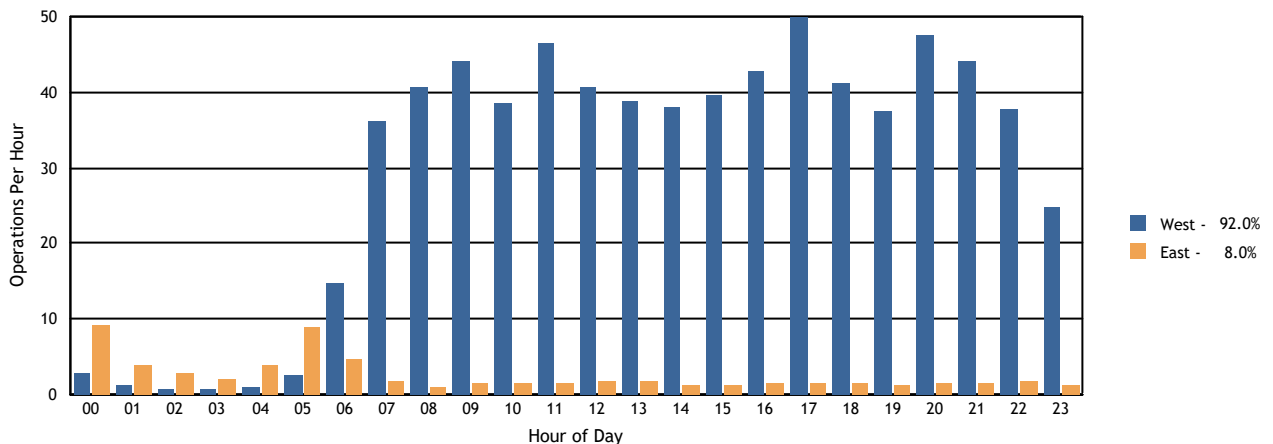
Time Period	Departures			Arrivals			Departures		Arrivals	
	West	East	Average	West	East	Average	West	East	West	East
<b>Total Hours</b>										
24 Hours	747	29	776	714	62	776	96%	4%	92%	8%
<b>CNEL Hours</b>										
0700-1900	503	18	521	498	19	516	97%	3%	96%	4%
1900-2200	94	4	98	129	4	133	96%	4%	97%	3%
2200-0700	151	7	158	87	39	126	96%	4%	69%	31%
<b>Contra Hours</b>										
Midnight - 0630	75	4	79	12	35	47	96%	4%	25%	75%
0630 - Midnight	672	25	697	702	27	729	96%	4%	96%	4%

All percentages are rounded to the nearest whole number.

Departures Per Hour by Operational Direction



Arrivals Per Hour by Operational Direction





## LAX Average Daily Runway Use By Aircraft Type - 24 Hours Fourth Quarter 2021

Arrivals (Average Daily Operations)								
Aircraft Type	06L	06R	07L	07R	24L	24R	25L	25R
A20N	0.14	0.62	0.00	0.47	0.02	2.17	11.24	0.10
A21N	0.50	1.57	0.02	0.78	0.05	8.15	15.52	0.21
A306	0.07	0.63	0.08	0.03	0.00	0.01	1.09	0.02
A319	0.21	0.45	0.00	0.54	0.04	4.60	13.40	0.18
A320	0.84	1.10	0.01	1.70	0.22	20.39	36.09	0.41
A321	0.90	2.13	0.02	1.77	0.13	19.87	51.23	0.58
A332	0.27	0.79	0.00	0.10	0.07	3.42	3.05	0.01
A333	0.01	0.03	0.00	0.02	0.00	0.04	0.25	0.00
A343	0.00	0.00	0.00	0.00	0.00	0.02	0.03	0.00
A345	0.00	0.00	0.00	0.00	0.00	0.00	0.01	0.00
A359	0.51	0.35	0.00	0.02	0.14	7.43	4.41	0.01
A35K	0.05	0.01	0.00	0.01	0.03	1.54	0.49	0.00
A388	0.08	0.00	0.00	0.00	0.01	1.41	0.01	0.00
ASTR	0.00	0.00	0.00	0.01	0.00	0.00	0.01	0.00
B350	0.03	0.00	0.00	0.02	0.04	1.48	0.63	0.00
B38M	0.55	0.64	0.00	0.13	0.18	15.26	3.87	0.07
B39M	0.28	0.79	0.02	0.41	0.00	4.97	9.22	0.11
B733	0.00	0.01	0.00	0.00	0.00	0.00	0.02	0.00
B734	0.02	0.01	0.00	0.00	0.00	0.02	0.14	0.00
B737	0.84	0.40	0.00	0.26	0.15	20.47	4.08	0.09
B738	1.75	1.32	0.01	1.66	0.47	35.87	32.02	0.33
B739	0.90	1.38	0.00	1.03	0.15	23.83	23.57	0.40
B744	0.35	2.25	0.05	0.37	0.00	0.15	9.95	0.08
B748	0.14	0.79	0.00	0.29	0.01	1.18	3.68	0.00
B752	0.49	2.03	0.09	0.46	0.10	7.43	9.37	0.11
B753	0.37	1.29	0.00	0.26	0.16	6.73	6.22	0.09
B762	0.02	0.20	0.01	0.09	0.00	0.01	1.64	0.01
B763	0.30	4.01	0.39	0.84	0.03	2.84	13.93	0.25
B764	0.12	0.04	0.00	0.08	0.00	3.26	1.48	0.01
B772	0.10	0.40	0.01	0.21	0.02	1.46	5.60	0.03
B77L	0.28	1.74	0.03	0.30	0.00	0.17	10.40	0.02
B77W	0.88	0.99	0.01	0.21	0.14	19.53	9.66	0.07
B788	0.03	0.23	0.00	0.15	0.00	0.35	2.40	0.01
B789	0.53	1.15	0.00	0.27	0.05	6.96	8.85	0.10
B78X	0.03	0.01	0.00	0.09	0.00	0.61	1.25	0.00
BCS1	0.09	0.01	0.00	0.07	0.04	2.54	1.17	0.01
BCS3	0.02	0.01	0.00	0.02	0.00	0.17	0.46	0.00
BE20	0.00	0.01	0.00	0.00	0.00	0.09	0.15	0.00
BE30	0.01	0.00	0.00	0.00	0.00	0.01	0.02	0.00
BE40	0.01	0.01	0.00	0.00	0.00	0.10	0.29	0.00

Departures (Average Daily Operations)								
Aircraft Type	06L	06R	07L	07R	24L	24R	25L	25R
A20N	0.00	0.18	0.35	0.00	3.12	0.01	0.21	10.90
A21N	0.00	0.35	0.91	0.00	5.49	0.08	0.04	19.91
A306	0.00	0.00	0.08	0.00	0.00	0.00	0.42	1.42
A319	0.01	0.22	0.42	0.00	4.95	0.03	0.20	13.57
A320	0.00	0.63	1.71	0.01	16.49	0.09	0.41	41.34
A321	0.00	1.04	1.64	0.00	11.53	0.12	0.51	61.72
A332	0.00	0.03	0.28	0.00	5.91	0.02	0.09	1.42
A333	0.00	0.02	0.04	0.00	0.04	0.00	0.02	0.24
A343	0.00	0.00	0.00	0.00	0.00	0.00	0.02	0.02
A345	0.00	0.00	0.00	0.00	0.00	0.00	0.00	0.01
A359	0.00	0.07	0.39	0.00	9.25	0.01	0.09	3.04
A35K	0.00	0.00	0.05	0.00	0.99	0.00	0.00	1.10
A388	0.00	0.03	0.00	0.03	1.26	0.00	0.17	0.00
ASTR	0.00	0.00	0.01	0.00	0.00	0.00	0.00	0.01
B350	0.00	0.00	0.04	0.00	0.33	0.01	0.41	1.46
B38M	0.00	0.29	0.32	0.00	16.68	0.09	0.02	3.27
B39M	0.00	0.14	0.42	0.00	2.71	0.05	0.20	12.29
B733	0.00	0.00	0.00	0.00	0.01	0.00	0.01	0.01
B734	0.00	0.00	0.00	0.00	0.01	0.00	0.04	0.14
B737	0.00	0.55	0.47	0.00	23.02	0.24	0.03	2.00
B738	0.00	1.26	2.08	0.00	39.03	0.28	0.45	30.23
B739	0.00	0.64	1.21	0.00	21.62	0.18	0.17	27.46
B744	0.00	0.05	0.32	0.00	0.03	0.00	3.47	9.29
B748	0.00	0.10	0.00	0.20	1.48	0.00	4.26	0.09
B752	0.01	0.38	0.38	0.01	9.78	0.11	1.12	8.41
B753	0.01	0.13	0.37	0.00	7.46	0.05	0.22	6.85
B762	0.00	0.00	0.11	0.00	0.01	0.00	0.26	1.60
B763	0.00	0.20	0.76	0.00	3.49	0.04	4.33	13.75
B764	0.00	0.11	0.07	0.00	3.64	0.01	0.01	1.17
B772	0.00	0.05	0.24	0.00	0.74	0.00	0.10	6.71
B77L	0.00	0.09	0.30	0.00	0.02	0.00	4.34	8.20
B77W	0.00	0.27	0.74	0.00	15.14	0.03	0.65	14.72
B788	0.00	0.02	0.16	0.00	1.79	0.01	0.03	1.13
B789	0.00	0.17	0.52	0.01	7.32	0.02	0.16	9.71
B78X	0.00	0.05	0.05	0.00	0.46	0.00	0.00	1.41
BCS1	0.00	0.03	0.12	0.00	3.64	0.01	0.00	0.13
BCS3	0.00	0.02	0.01	0.00	0.07	0.00	0.00	0.58
BE20	0.00	0.00	0.00	0.00	0.05	0.00	0.00	0.20
BE30	0.00	0.00	0.00	0.00	0.02	0.00	0.00	0.00
BE40	0.00	0.02	0.00	0.00	0.01	0.00	0.13	0.25

## LAX Average Daily Runway Use By Aircraft Type - 24 Hours Fourth Quarter 2021

Arrivals (Average Daily Operations)								
Aircraft Type	06L	06R	07L	07R	24L	24R	25L	25R
BE58	0.00	0.00	0.00	0.00	0.00	0.01	0.01	0.00
BE99	0.02	0.00	0.00	0.00	0.00	0.36	0.24	0.02
BE9L	0.00	0.00	0.00	0.00	0.00	0.01	0.02	0.00
C150	0.00	0.00	0.00	0.00	0.00	0.00	0.02	0.00
C172	0.00	0.00	0.00	0.00	0.00	0.03	0.05	0.00
C208	0.00	0.00	0.00	0.11	0.00	0.04	2.90	0.25
C25A	0.00	0.00	0.00	0.00	0.00	0.15	0.26	0.00
C25B	0.00	0.00	0.01	0.01	0.00	0.21	0.60	0.00
C25C	0.00	0.00	0.00	0.00	0.00	0.04	0.13	0.00
C25M	0.00	0.00	0.00	0.00	0.00	0.03	0.12	0.00
C500	0.00	0.00	0.00	0.00	0.00	0.00	0.02	0.00
C510	0.00	0.00	0.00	0.00	0.00	0.01	0.00	0.00
C525	0.01	0.00	0.00	0.00	0.00	0.00	0.08	0.00
C550	0.01	0.00	0.00	0.00	0.00	0.02	0.01	0.00
C55B	0.00	0.00	0.00	0.00	0.00	0.02	0.02	0.00
C560	0.00	0.01	0.00	0.01	0.00	0.05	0.30	0.00
C56X	0.03	0.03	0.00	0.01	0.00	0.37	1.10	0.01
C650	0.00	0.00	0.00	0.00	0.00	0.01	0.12	0.00
C680	0.00	0.01	0.00	0.01	0.00	0.20	0.62	0.00
C68A	0.02	0.01	0.00	0.05	0.00	0.47	1.37	0.00
C700	0.01	0.00	0.00	0.00	0.00	0.15	0.37	0.00
C750	0.00	0.02	0.00	0.02	0.02	0.34	1.03	0.00
CL30	0.03	0.03	0.00	0.03	0.00	0.40	1.34	0.00
CL35	0.02	0.02	0.01	0.09	0.01	0.79	2.09	0.00
CL60	0.00	0.00	0.00	0.05	0.00	0.35	1.63	0.00
CRJ2	0.39	0.03	0.00	0.05	0.05	9.95	2.42	0.03
CRJ7	0.47	0.02	0.00	0.52	0.11	9.48	10.59	0.21
CRJ9	0.00	0.00	0.00	0.00	0.01	0.03	0.02	0.00
DC10	0.04	0.25	0.08	0.04	0.00	0.00	0.98	0.01
E120	0.00	0.00	0.00	0.00	0.00	0.00	0.01	0.00
E135	0.02	0.00	0.00	0.05	0.01	0.33	1.18	0.01
E145	0.00	0.01	0.00	0.00	0.00	0.03	0.28	0.00
E190	0.00	0.00	0.00	0.01	0.00	0.04	0.21	0.00
E35L	0.01	0.01	0.00	0.01	0.00	0.03	0.43	0.00
E50P	0.00	0.00	0.00	0.00	0.00	0.02	0.03	0.00
E545	0.00	0.00	0.00	0.01	0.00	0.04	0.34	0.00
E550	0.01	0.00	0.00	0.02	0.01	0.07	0.26	0.00
E55P	0.07	0.03	0.00	0.07	0.00	0.61	1.29	0.02
E75L	2.43	0.45	0.00	1.08	0.54	72.54	28.91	0.54
E75S	0.09	0.00	0.00	0.03	0.01	1.29	0.38	0.00

Departures (Average Daily Operations)								
Aircraft Type	06L	06R	07L	07R	24L	24R	25L	25R
BE58	0.00	0.00	0.00	0.00	0.00	0.00	0.01	0.01
BE99	0.00	0.01	0.00	0.00	0.04	0.00	0.05	0.53
BE9L	0.00	0.00	0.00	0.00	0.00	0.00	0.00	0.03
C150	0.00	0.00	0.00	0.00	0.00	0.00	0.00	0.02
C17	0.00	0.00	0.00	0.00	0.03	0.00	0.00	0.00
C172	0.00	0.00	0.00	0.00	0.01	0.00	0.02	0.07
C208	0.00	0.00	0.11	0.00	0.02	0.00	0.00	3.17
C25A	0.00	0.00	0.00	0.00	0.04	0.00	0.07	0.30
C25B	0.00	0.00	0.01	0.00	0.05	0.00	0.14	0.63
C25C	0.00	0.00	0.00	0.00	0.02	0.00	0.09	0.05
C25M	0.00	0.00	0.00	0.00	0.01	0.00	0.03	0.12
C500	0.00	0.00	0.00	0.00	0.00	0.00	0.01	0.01
C510	0.00	0.00	0.00	0.00	0.00	0.00	0.00	0.01
C525	0.00	0.00	0.00	0.00	0.01	0.00	0.03	0.04
C550	0.00	0.00	0.00	0.00	0.00	0.00	0.00	0.04
C55B	0.00	0.00	0.00	0.00	0.00	0.00	0.00	0.04
C560	0.00	0.00	0.01	0.00	0.02	0.00	0.11	0.25
C56X	0.00	0.03	0.01	0.00	0.03	0.00	0.48	1.03
C650	0.00	0.00	0.01	0.00	0.00	0.00	0.00	0.12
C680	0.00	0.00	0.00	0.00	0.03	0.00	0.36	0.46
C68A	0.00	0.02	0.04	0.01	0.12	0.00	0.52	1.23
C700	0.00	0.00	0.02	0.00	0.03	0.00	0.10	0.38
C750	0.00	0.00	0.03	0.00	0.04	0.00	0.38	0.99
CL30	0.00	0.02	0.03	0.00	0.01	0.00	0.57	1.20
CL35	0.00	0.10	0.07	0.00	0.09	0.00	0.73	2.05
CL60	0.00	0.07	0.03	0.00	0.04	0.00	0.63	1.25
CRJ2	0.00	0.34	0.11	0.00	4.54	0.04	0.23	7.71
CRJ7	0.02	0.67	0.26	0.01	2.82	0.01	0.04	17.59
CRJ9	0.00	0.00	0.00	0.00	0.02	0.00	0.00	0.04
DC10	0.00	0.03	0.02	0.00	0.00	0.00	0.26	1.08
E120	0.00	0.00	0.00	0.00	0.00	0.00	0.01	0.00
E135	0.00	0.05	0.00	0.00	0.01	0.01	0.33	1.21
E145	0.00	0.00	0.00	0.00	0.00	0.00	0.08	0.25
E190	0.00	0.01	0.00	0.00	0.00	0.00	0.07	0.18
E35L	0.00	0.01	0.01	0.00	0.01	0.00	0.18	0.27
E50P	0.00	0.00	0.00	0.00	0.00	0.00	0.00	0.05
E545	0.00	0.00	0.00	0.00	0.02	0.00	0.11	0.26
E550	0.00	0.01	0.00	0.02	0.00	0.00	0.08	0.25
E55P	0.00	0.03	0.03	0.00	0.13	0.00	0.53	1.34
E75L	0.00	2.08	1.28	0.00	56.26	0.37	0.07	46.39

LAX Noise Management  
Source: LAX ANOMS, based on available FAA radar flight track data.

## LAX Average Daily Runway Use By Aircraft Type - 24 Hours Fourth Quarter 2021

Arrivals (Average Daily Operations)								
Aircraft Type	06L	06R	07L	07R	24L	24R	25L	25R
EA50	0.00	0.00	0.00	0.01	0.00	0.00	0.00	0.00
F2TH	0.00	0.03	0.00	0.03	0.01	0.25	0.59	0.00
F900	0.00	0.00	0.00	0.00	0.00	0.20	0.60	0.00
FA20	0.00	0.00	0.00	0.00	0.00	0.00	0.01	0.00
FA50	0.00	0.01	0.00	0.01	0.00	0.07	0.17	0.00
FA7X	0.00	0.00	0.00	0.00	0.00	0.10	0.34	0.00
FA8X	0.00	0.00	0.00	0.00	0.00	0.02	0.03	0.00
G150	0.00	0.00	0.00	0.00	0.00	0.03	0.11	0.00
G280	0.00	0.00	0.00	0.01	0.00	0.12	0.29	0.00
GA5C	0.00	0.01	0.00	0.01	0.00	0.00	0.03	0.00
GA6C	0.00	0.00	0.00	0.01	0.00	0.07	0.11	0.00
GALX	0.00	0.01	0.00	0.00	0.00	0.08	0.36	0.00
GL5T	0.02	0.01	0.00	0.00	0.00	0.18	0.54	0.00
GL7T	0.00	0.01	0.00	0.00	0.00	0.13	0.41	0.00
GLEX	0.02	0.01	0.00	0.04	0.00	0.65	1.76	0.00
GLF4	0.04	0.16	0.00	0.07	0.01	0.62	2.57	0.00
GLF5	0.04	0.03	0.00	0.09	0.01	0.61	2.25	0.04
GLF6	0.00	0.03	0.00	0.03	0.02	0.51	1.23	0.01
H25B	0.02	0.04	0.00	0.09	0.01	0.16	1.17	0.00
H25C	0.01	0.00	0.00	0.00	0.00	0.01	0.09	0.00
HA4T	0.00	0.00	0.00	0.00	0.00	0.00	0.05	0.00
HDJT	0.00	0.00	0.00	0.00	0.00	0.01	0.09	0.00
J328	0.01	0.00	0.00	0.05	0.00	0.01	0.03	0.00
LJ31	0.00	0.00	0.00	0.00	0.00	0.01	0.15	0.00
LJ35	0.00	0.01	0.00	0.00	0.00	0.02	0.13	0.00
LJ45	0.00	0.00	0.00	0.00	0.00	0.15	0.61	0.00
LJ60	0.00	0.00	0.00	0.00	0.00	0.09	0.45	0.00
LJ75	0.00	0.00	0.00	0.00	0.00	0.03	0.04	0.00
MD11	0.15	0.92	0.04	0.27	0.00	0.01	3.73	0.01
P180	0.00	0.00	0.00	0.00	0.00	0.00	0.01	0.00
PA27	0.00	0.00	0.00	0.00	0.00	0.01	0.00	0.00
PA46	0.00	0.00	0.00	0.00	0.00	0.01	0.00	0.00
PC12	0.08	0.00	0.00	0.03	0.04	1.13	0.49	0.02
PC24	0.00	0.00	0.00	0.00	0.00	0.02	0.03	0.00
PRM1	0.00	0.00	0.00	0.00	0.00	0.08	0.09	0.01
S22T	0.00	0.00	0.00	0.00	0.00	0.01	0.01	0.00
SR20	0.00	0.00	0.00	0.00	0.00	0.01	0.01	0.00
SR22	0.00	0.00	0.00	0.00	0.00	0.03	0.01	0.00
A124	0.00	0.00	0.00	0.00	0.00	0.00	0.02	0.00
B745	0.00	0.00	0.00	0.00	0.00	0.00	0.01	0.00

Departures (Average Daily Operations)								
Aircraft Type	06L	06R	07L	07R	24L	24R	25L	25R
E75S	0.00	0.05	0.03	0.00	1.70	0.02	0.00	0.00
EA50	0.00	0.01	0.00	0.00	0.00	0.00	0.00	0.00
F2TH	0.00	0.02	0.01	0.00	0.01	0.00	0.28	0.60
F900	0.00	0.01	0.00	0.00	0.03	0.00	0.27	0.51
FA20	0.00	0.00	0.00	0.00	0.00	0.00	0.00	0.01
FA50	0.00	0.01	0.00	0.00	0.01	0.00	0.08	0.17
FA7X	0.00	0.00	0.00	0.00	0.01	0.00	0.14	0.29
FA8X	0.00	0.00	0.00	0.00	0.00	0.00	0.02	0.03
G150	0.00	0.00	0.00	0.00	0.00	0.00	0.01	0.12
G280	0.00	0.00	0.01	0.00	0.02	0.00	0.11	0.28
GA5C	0.00	0.01	0.00	0.00	0.00	0.00	0.01	0.03
GA6C	0.00	0.01	0.00	0.00	0.00	0.00	0.07	0.13
GALX	0.00	0.00	0.00	0.00	0.00	0.00	0.14	0.30
GL5T	0.00	0.00	0.00	0.00	0.05	0.00	0.15	0.53
GL7T	0.00	0.00	0.00	0.00	0.00	0.00	0.20	0.35
GLEX	0.00	0.03	0.04	0.00	0.09	0.00	0.72	1.64
GLF4	0.00	0.04	0.03	0.00	0.10	0.00	0.82	2.48
GLF5	0.00	0.07	0.07	0.01	0.08	0.00	0.76	2.13
GLF6	0.00	0.01	0.03	0.00	0.09	0.01	0.54	1.12
H25B	0.00	0.04	0.01	0.00	0.07	0.00	0.40	0.98
H25C	0.00	0.00	0.00	0.00	0.00	0.00	0.02	0.09
HA4T	0.00	0.00	0.00	0.00	0.00	0.00	0.03	0.02
HDJT	0.00	0.00	0.00	0.00	0.00	0.00	0.02	0.08
J328	0.00	0.01	0.02	0.02	0.00	0.00	0.01	0.03
LJ31	0.00	0.00	0.00	0.00	0.00	0.00	0.04	0.12
LJ35	0.00	0.00	0.01	0.00	0.00	0.00	0.05	0.11
LJ45	0.00	0.00	0.02	0.00	0.00	0.00	0.21	0.54
LJ60	0.00	0.01	0.00	0.00	0.01	0.00	0.21	0.32
LJ75	0.00	0.00	0.00	0.00	0.01	0.00	0.02	0.04
MD11	0.00	0.08	0.21	0.01	0.00	0.00	1.38	3.39
P180	0.00	0.00	0.00	0.00	0.00	0.00	0.00	0.01
P28A	0.00	0.00	0.00	0.00	0.00	0.00	0.00	0.01
PA27	0.00	0.00	0.00	0.00	0.00	0.00	0.00	0.01
PA46	0.00	0.00	0.00	0.00	0.00	0.00	0.00	0.01
PC12	0.00	0.08	0.00	0.01	0.71	0.00	0.00	1.01
PC24	0.00	0.00	0.00	0.00	0.00	0.00	0.00	0.05
PRM1	0.00	0.00	0.00	0.00	0.00	0.00	0.02	0.15
S22T	0.00	0.00	0.00	0.00	0.00	0.00	0.00	0.02
SR20	0.00	0.00	0.00	0.00	0.01	0.00	0.00	0.01
SR22	0.00	0.00	0.00	0.00	0.00	0.00	0.00	0.04

**LAX Average Daily Runway Use By Aircraft Type - 24 Hours  
Fourth Quarter 2021**

<b>Arrivals</b> (Average Daily Operations)								
Aircraft Type	06L	06R	07L	07R	24L	24R	25L	25R
C72R	0.00	0.00	0.00	0.00	0.00	0.00	0.01	0.00
A346	0.02	0.02	0.00	0.00	0.00	0.01	0.03	0.00
GLF3	0.00	0.00	0.00	0.00	0.00	0.00	0.03	0.00
SF50	0.00	0.00	0.00	0.00	0.00	0.02	0.01	0.00
BE95	0.00	0.00	0.00	0.00	0.00	0.00	0.01	0.00
LJ55	0.00	0.00	0.00	0.00	0.00	0.00	0.03	0.00
C441	0.00	0.00	0.00	0.00	0.00	0.01	0.00	0.00
DA40	0.00	0.00	0.00	0.00	0.00	0.02	0.01	0.00
C501	0.00	0.00	0.00	0.00	0.00	0.00	0.01	0.00
ERAC	0.00	0.00	0.00	0.00	0.00	0.01	0.03	0.00
PA44	0.00	0.00	0.00	0.00	0.00	0.00	0.01	0.00
P210	0.00	0.00	0.00	0.00	0.00	0.00	0.01	0.00
TBM7	0.00	0.00	0.00	0.00	0.00	0.00	0.01	0.00
C120	0.00	0.00	0.00	0.00	0.00	0.01	0.00	0.00
MD83	0.00	0.01	0.00	0.00	0.00	0.00	0.00	0.00
CRJ1	0.00	0.00	0.00	0.00	0.00	0.00	0.01	0.00
G550	0.00	0.00	0.00	0.00	0.00	0.00	0.01	0.00
C425	0.00	0.00	0.00	0.00	0.00	0.00	0.01	0.00
P28B	0.00	0.00	0.00	0.00	0.00	0.01	0.00	0.00
BE35	0.00	0.00	0.00	0.00	0.00	0.01	0.00	0.00

<b>Departures</b> (Average Daily Operations)								
Aircraft Type	06L	06R	07L	07R	24L	24R	25L	25R
A124	0.00	0.00	0.00	0.00	0.00	0.00	0.02	0.00
B745	0.00	0.00	0.00	0.00	0.00	0.00	0.01	0.00
A346	0.00	0.00	0.00	0.00	0.01	0.00	0.02	0.05
GLF3	0.00	0.00	0.00	0.00	0.00	0.00	0.01	0.02
SF50	0.00	0.00	0.00	0.00	0.00	0.00	0.01	0.02
BE95	0.00	0.00	0.00	0.00	0.00	0.00	0.00	0.01
LJ55	0.00	0.00	0.00	0.00	0.00	0.00	0.01	0.02
C441	0.00	0.00	0.00	0.00	0.00	0.00	0.00	0.01
DA40	0.00	0.00	0.00	0.00	0.01	0.00	0.00	0.02
C501	0.00	0.00	0.00	0.00	0.00	0.00	0.00	0.01
ERAC	0.00	0.00	0.00	0.00	0.00	0.00	0.00	0.04
PA44	0.00	0.00	0.00	0.00	0.00	0.00	0.00	0.01
P210	0.00	0.00	0.00	0.00	0.00	0.00	0.01	0.00
TBM7	0.00	0.00	0.00	0.00	0.01	0.00	0.00	0.00
C120	0.00	0.00	0.00	0.00	0.00	0.00	0.00	0.01
MD83	0.00	0.00	0.00	0.00	0.00	0.00	0.00	0.01
CRJ1	0.00	0.00	0.00	0.00	0.00	0.00	0.01	0.00
G550	0.00	0.00	0.00	0.00	0.00	0.00	0.00	0.01
C425	0.00	0.00	0.00	0.00	0.01	0.00	0.00	0.00
P28B	0.00	0.00	0.00	0.00	0.01	0.00	0.00	0.00
BE35	0.00	0.00	0.00	0.00	0.00	0.00	0.00	0.01

**LAX Average Daily Runway Use By Aircraft Type - Night Time (10pm - 7am)  
Fourth Quarter 2021**

Arrivals (Average Daily Operations)								
Aircraft Type	06L	06R	07L	07R	24L	24R	25L	25R
A20N	0.08	0.62	0.00	0.14	0.00	0.22	2.60	0.02
A21N	0.21	1.57	0.02	0.23	0.00	2.43	3.02	0.02
A306	0.07	0.63	0.08	0.01	0.00	0.00	0.32	0.02
A319	0.14	0.45	0.00	0.13	0.01	0.88	1.46	0.02
A320	0.26	1.10	0.01	0.40	0.00	1.78	6.02	0.02
A321	0.43	2.13	0.02	0.40	0.04	3.20	8.67	0.05
A332	0.13	0.79	0.00	0.04	0.02	0.82	0.36	0.00
A333	0.00	0.03	0.00	0.00	0.00	0.01	0.03	0.00
A343	0.00	0.00	0.00	0.00	0.00	0.01	0.00	0.00
A359	0.09	0.35	0.00	0.00	0.00	0.15	0.07	0.00
A35K	0.01	0.01	0.00	0.00	0.00	0.11	0.03	0.00
A388	0.00	0.00	0.00	0.00	0.00	0.01	0.00	0.00
B350	0.01	0.00	0.00	0.00	0.01	0.16	0.05	0.00
B38M	0.17	0.64	0.00	0.01	0.00	2.90	0.53	0.00
B39M	0.12	0.79	0.02	0.17	0.00	0.47	2.25	0.03
B737	0.24	0.40	0.00	0.05	0.02	3.60	0.43	0.01
B738	0.35	1.32	0.00	0.25	0.05	3.63	3.43	0.00
B739	0.29	1.38	0.00	0.16	0.04	2.84	2.18	0.02
B744	0.27	2.25	0.05	0.18	0.00	0.03	1.80	0.05
B748	0.05	0.79	0.00	0.16	0.00	0.03	0.72	0.00
B752	0.27	2.03	0.09	0.17	0.07	0.87	1.36	0.02
B753	0.15	1.29	0.00	0.08	0.09	0.93	0.83	0.00
B762	0.02	0.20	0.01	0.03	0.00	0.00	0.42	0.01
B763	0.27	4.01	0.39	0.40	0.00	0.10	4.52	0.18
B764	0.04	0.04	0.00	0.00	0.00	0.45	0.17	0.00
B772	0.05	0.40	0.01	0.05	0.00	0.24	0.84	0.02
B77L	0.20	1.74	0.03	0.12	0.00	0.05	1.58	0.02
B77W	0.10	0.98	0.01	0.02	0.00	0.74	0.68	0.02
B788	0.01	0.23	0.00	0.04	0.00	0.05	0.32	0.01
B789	0.12	1.15	0.00	0.03	0.00	0.26	0.97	0.02
B78X	0.00	0.01	0.00	0.01	0.00	0.01	0.00	0.00
BCS1	0.00	0.01	0.00	0.00	0.00	0.04	0.02	0.00
BCS3	0.02	0.01	0.00	0.02	0.00	0.03	0.14	0.00
BE20	0.00	0.01	0.00	0.00	0.00	0.00	0.01	0.00
BE30	0.01	0.00	0.00	0.00	0.00	0.00	0.01	0.00
BE40	0.00	0.01	0.00	0.00	0.00	0.00	0.02	0.00
BE99	0.02	0.00	0.00	0.00	0.00	0.34	0.24	0.02
C208	0.00	0.00	0.00	0.00	0.00	0.00	0.02	0.00
C25A	0.00	0.00	0.00	0.00	0.00	0.00	0.01	0.00
C25B	0.00	0.00	0.01	0.00	0.00	0.00	0.01	0.00

Departures (Average Daily Operations)								
Aircraft Type	06L	06R	07L	07R	24L	24R	25L	25R
A20N	0.00	0.10	0.13	0.00	0.89	0.00	0.20	4.41
A21N	0.00	0.07	0.17	0.00	0.26	0.00	0.02	2.99
A306	0.00	0.00	0.05	0.00	0.00	0.00	0.09	0.85
A319	0.00	0.09	0.21	0.00	1.17	0.03	0.10	3.72
A320	0.00	0.15	0.43	0.00	2.47	0.02	0.36	8.36
A321	0.00	0.25	0.45	0.00	2.60	0.05	0.43	16.86
A332	0.00	0.00	0.04	0.00	0.34	0.00	0.03	0.55
A333	0.00	0.00	0.01	0.00	0.01	0.00	0.00	0.07
A343	0.00	0.00	0.00	0.00	0.00	0.00	0.01	0.00
A359	0.00	0.01	0.16	0.00	2.58	0.00	0.09	1.63
A35K	0.00	0.00	0.00	0.00	0.24	0.00	0.00	0.02
A388	0.00	0.02	0.00	0.00	0.25	0.00	0.16	0.00
B350	0.00	0.00	0.02	0.00	0.00	0.00	0.01	0.62
B38M	0.00	0.05	0.02	0.00	1.25	0.00	0.02	0.68
B39M	0.00	0.04	0.11	0.00	0.28	0.00	0.20	4.39
B737	0.00	0.17	0.11	0.00	2.30	0.05	0.00	1.45
B738	0.00	0.23	0.52	0.00	3.85	0.03	0.28	8.55
B739	0.00	0.09	0.35	0.00	3.39	0.04	0.16	7.25
B744	0.00	0.01	0.13	0.00	0.00	0.00	0.49	4.59
B748	0.00	0.00	0.00	0.09	0.07	0.00	2.00	0.09
B752	0.00	0.09	0.12	0.00	1.34	0.04	0.36	3.70
B753	0.00	0.02	0.13	0.00	1.00	0.00	0.21	2.43
B762	0.00	0.00	0.08	0.00	0.01	0.00	0.12	1.36
B763	0.00	0.04	0.26	0.00	0.35	0.00	0.95	6.35
B764	0.00	0.05	0.01	0.00	0.77	0.00	0.01	0.70
B772	0.00	0.00	0.13	0.00	0.15	0.00	0.05	2.11
B77L	0.00	0.01	0.05	0.00	0.01	0.00	0.28	2.61
B77W	0.00	0.07	0.25	0.00	3.05	0.01	0.46	5.65
B788	0.00	0.00	0.04	0.00	0.05	0.00	0.01	0.28
B789	0.00	0.02	0.11	0.01	2.08	0.01	0.14	2.98
B78X	0.00	0.02	0.01	0.00	0.00	0.00	0.00	0.35
BCS1	0.00	0.00	0.00	0.00	0.05	0.00	0.00	0.00
BE20	0.00	0.00	0.00	0.00	0.01	0.00	0.00	0.02
BE40	0.00	0.01	0.00	0.00	0.00	0.00	0.00	0.04
BE99	0.00	0.01	0.00	0.00	0.00	0.00	0.05	0.48
C208	0.00	0.00	0.00	0.00	0.00	0.00	0.00	0.01
C25A	0.00	0.00	0.00	0.00	0.01	0.00	0.00	0.01
C25B	0.00	0.00	0.00	0.00	0.00	0.00	0.00	0.07
C525	0.00	0.00	0.00	0.00	0.00	0.00	0.00	0.02
C560	0.00	0.00	0.00	0.00	0.00	0.00	0.01	0.02

**LAX Average Daily Runway Use By Aircraft Type - Night Time (10pm - 7am)  
Fourth Quarter 2021**

Arrivals (Average Daily Operations)								
Aircraft Type	06L	06R	07L	07R	24L	24R	25L	25R
C525	0.01	0.00	0.00	0.00	0.00	0.00	0.00	0.00
C560	0.00	0.01	0.00	0.01	0.00	0.00	0.03	0.00
C56X	0.00	0.03	0.00	0.00	0.00	0.00	0.03	0.00
C680	0.00	0.01	0.00	0.00	0.00	0.00	0.02	0.00
C68A	0.00	0.01	0.00	0.01	0.00	0.00	0.04	0.00
C700	0.00	0.00	0.00	0.00	0.00	0.00	0.01	0.00
C750	0.00	0.02	0.00	0.00	0.00	0.01	0.04	0.00
CL30	0.01	0.03	0.00	0.00	0.00	0.01	0.10	0.00
CL35	0.00	0.02	0.01	0.00	0.00	0.03	0.09	0.00
CL60	0.00	0.00	0.00	0.01	0.00	0.00	0.05	0.00
CRJ2	0.03	0.03	0.00	0.00	0.00	0.53	0.22	0.00
CRJ7	0.03	0.02	0.00	0.04	0.00	0.50	0.92	0.00
DC10	0.02	0.25	0.08	0.02	0.00	0.00	0.17	0.01
E135	0.00	0.00	0.00	0.00	0.00	0.00	0.01	0.00
E145	0.00	0.01	0.00	0.00	0.00	0.00	0.00	0.00
E35L	0.00	0.01	0.00	0.00	0.00	0.00	0.01	0.00
E550	0.00	0.00	0.00	0.00	0.00	0.00	0.01	0.00
E55P	0.00	0.03	0.00	0.01	0.00	0.00	0.07	0.00
E75L	0.34	0.45	0.00	0.13	0.03	3.95	3.12	0.04
E75S	0.02	0.00	0.00	0.01	0.00	0.14	0.03	0.00
F2TH	0.00	0.03	0.00	0.00	0.00	0.02	0.04	0.00
F900	0.00	0.00	0.00	0.00	0.00	0.01	0.03	0.00
FA7X	0.00	0.00	0.00	0.00	0.00	0.00	0.03	0.00
G280	0.00	0.00	0.00	0.00	0.00	0.01	0.00	0.00
GA5C	0.00	0.01	0.00	0.00	0.00	0.00	0.00	0.00
GA6C	0.00	0.00	0.00	0.00	0.00	0.01	0.01	0.00
GALX	0.00	0.01	0.00	0.00	0.00	0.00	0.00	0.00
GL5T	0.00	0.01	0.00	0.00	0.00	0.02	0.03	0.00
GL7T	0.00	0.01	0.00	0.00	0.00	0.01	0.02	0.00
GLEX	0.00	0.01	0.00	0.00	0.00	0.02	0.13	0.00
GLF4	0.01	0.16	0.00	0.00	0.00	0.01	0.29	0.00
GLF5	0.00	0.03	0.00	0.01	0.00	0.02	0.16	0.01
GLF6	0.00	0.03	0.00	0.00	0.00	0.01	0.12	0.00
H25B	0.01	0.04	0.00	0.01	0.00	0.00	0.10	0.00
LJ31	0.00	0.00	0.00	0.00	0.00	0.00	0.01	0.00
LJ35	0.00	0.01	0.00	0.00	0.00	0.00	0.02	0.00
LJ45	0.00	0.00	0.00	0.00	0.00	0.00	0.03	0.00
LJ60	0.00	0.00	0.00	0.00	0.00	0.00	0.02	0.00
MD11	0.13	0.92	0.04	0.13	0.00	0.01	0.83	0.01
PC12	0.00	0.00	0.00	0.02	0.00	0.00	0.01	0.00
B734	0.02	0.01	0.00	0.00	0.00	0.01	0.02	0.00

Departures (Average Daily Operations)								
Aircraft Type	06L	06R	07L	07R	24L	24R	25L	25R
C56X	0.00	0.01	0.00	0.00	0.00	0.00	0.01	0.09
C680	0.00	0.00	0.00	0.00	0.00	0.00	0.00	0.02
C68A	0.00	0.00	0.00	0.00	0.00	0.00	0.02	0.08
C700	0.00	0.00	0.00	0.00	0.00	0.00	0.00	0.04
C750	0.00	0.00	0.00	0.00	0.00	0.00	0.00	0.03
CL30	0.00	0.01	0.00	0.00	0.00	0.00	0.01	0.09
CL35	0.00	0.00	0.00	0.00	0.00	0.00	0.02	0.12
CL60	0.00	0.02	0.01	0.00	0.00	0.00	0.01	0.15
CRJ2	0.00	0.02	0.02	0.00	0.13	0.00	0.00	0.83
CRJ7	0.00	0.11	0.03	0.00	0.05	0.00	0.01	1.11
DC10	0.00	0.03	0.01	0.00	0.00	0.00	0.07	0.96
E135	0.00	0.00	0.00	0.00	0.00	0.00	0.00	0.01
E145	0.00	0.00	0.00	0.00	0.00	0.00	0.00	0.01
E35L	0.00	0.00	0.00	0.00	0.00	0.00	0.00	0.04
E545	0.00	0.00	0.00	0.00	0.00	0.00	0.00	0.02
E550	0.00	0.00	0.00	0.00	0.00	0.00	0.00	0.05
E55P	0.00	0.00	0.01	0.00	0.00	0.00	0.01	0.14
E75L	0.00	0.21	0.16	0.00	3.74	0.03	0.05	4.52
E75S	0.00	0.01	0.00	0.00	0.17	0.00	0.00	0.00
F2TH	0.00	0.01	0.00	0.00	0.00	0.00	0.00	0.07
F900	0.00	0.01	0.00	0.00	0.00	0.00	0.00	0.04
FA7X	0.00	0.00	0.00	0.00	0.00	0.00	0.00	0.07
FA8X	0.00	0.00	0.00	0.00	0.00	0.00	0.00	0.01
G150	0.00	0.00	0.00	0.00	0.00	0.00	0.00	0.01
G280	0.00	0.00	0.00	0.00	0.00	0.00	0.00	0.01
GA6C	0.00	0.00	0.00	0.00	0.00	0.00	0.00	0.03
GALX	0.00	0.00	0.00	0.00	0.00	0.00	0.00	0.04
GL5T	0.00	0.00	0.00	0.00	0.00	0.00	0.00	0.09
GL7T	0.00	0.00	0.00	0.00	0.00	0.00	0.00	0.10
GLEX	0.00	0.01	0.00	0.00	0.00	0.00	0.02	0.23
GLF4	0.00	0.00	0.00	0.00	0.00	0.00	0.03	0.39
GLF5	0.00	0.02	0.01	0.00	0.00	0.00	0.02	0.24
GLF6	0.00	0.00	0.00	0.00	0.00	0.00	0.00	0.16
H25B	0.00	0.01	0.00	0.00	0.00	0.00	0.00	0.11
J328	0.00	0.00	0.00	0.00	0.00	0.00	0.00	0.01
LJ35	0.00	0.00	0.00	0.00	0.00	0.00	0.00	0.01
LJ45	0.00	0.00	0.00	0.00	0.00	0.00	0.00	0.02
LJ60	0.00	0.01	0.00	0.00	0.00	0.00	0.00	0.01
MD11	0.00	0.01	0.09	0.00	0.00	0.00	0.07	1.60
PC12	0.00	0.01	0.00	0.01	0.00	0.00	0.00	0.04
A124	0.00	0.00	0.00	0.00	0.00	0.00	0.02	0.00

LAX Noise Management  
Source: LAX ANOMS, based on available FAA radar flight track data.

**LAX Average Daily Runway Use By Aircraft Type - Night Time (10pm - 7am)  
Fourth Quarter 2021**

<b>Arrivals</b> (Average Daily Operations)								
Aircraft Type	06L	06R	07L	07R	24L	24R	25L	25R
C25C	0.00	0.00	0.00	0.00	0.00	0.01	0.02	0.00
FA50	0.00	0.01	0.00	0.01	0.00	0.01	0.01	0.00
PRM1	0.00	0.00	0.00	0.00	0.00	0.01	0.00	0.00
A346	0.01	0.02	0.00	0.00	0.00	0.01	0.02	0.00
E50P	0.00	0.00	0.00	0.00	0.00	0.01	0.00	0.00
C25M	0.00	0.00	0.00	0.00	0.00	0.01	0.00	0.00
GLF3	0.00	0.00	0.00	0.00	0.00	0.00	0.01	0.00
MD83	0.00	0.01	0.00	0.00	0.00	0.00	0.00	0.00
B733	0.00	0.01	0.00	0.00	0.00	0.00	0.00	0.00

<b>Departures</b> (Average Daily Operations)								
Aircraft Type	06L	06R	07L	07R	24L	24R	25L	25R
B734	0.00	0.00	0.00	0.00	0.00	0.00	0.00	0.10
FA50	0.00	0.01	0.00	0.00	0.00	0.00	0.00	0.01
PRM1	0.00	0.00	0.00	0.00	0.00	0.00	0.00	0.01
A346	0.00	0.00	0.00	0.00	0.01	0.00	0.01	0.02
C25M	0.00	0.00	0.00	0.00	0.00	0.00	0.00	0.01
C650	0.00	0.00	0.00	0.00	0.00	0.00	0.00	0.01
H25C	0.00	0.00	0.00	0.00	0.00	0.00	0.00	0.02
HDJT	0.00	0.00	0.00	0.00	0.00	0.00	0.00	0.01

**LAX Average Daily Runway Use By Aircraft Group - 24 Hours  
Fourth Quarter 2021**

<b>Arrivals</b> (Average Daily Operations)								
<b>Aircraft Group</b>	<b>06L</b>	<b>06R</b>	<b>07L</b>	<b>07R</b>	<b>24L</b>	<b>24R</b>	<b>25L</b>	<b>25R</b>
Small Jet	3.82	1.09	0.02	2.61	0.85	102.39	72.11	0.89
Small Narrow-Body Jet	5.64	6.75	0.04	6.30	1.28	130.34	135.48	1.70
Large Narrow-Body Jet	2.26	7.02	0.13	3.27	0.45	42.18	82.34	0.98
Small Wide-Body Jet	0.51	4.88	0.48	1.03	0.03	6.12	18.14	0.29
Large Wide-Body Jet	3.49	9.95	0.23	2.36	0.48	44.32	64.83	0.35
Non-Jet	0.14	0.01	0.00	0.16	0.09	3.32	4.71	0.29
Military	0.00	0.00	0.00	0.00	0.00	0.00	0.00	0.00

<b>Departures</b> (Average Daily Operations)								
<b>Aircraft Group</b>	<b>06L</b>	<b>06R</b>	<b>07L</b>	<b>07R</b>	<b>24L</b>	<b>24R</b>	<b>25L</b>	<b>25R</b>
Small Jet	0.02	3.80	2.27	0.08	66.66	0.47	11.41	99.20
Small Narrow-Body Jet	0.01	3.99	7.10	0.01	131.35	0.99	1.80	142.11
Large Narrow-Body Jet	0.02	1.90	3.30	0.01	34.26	0.36	1.89	96.89
Small Wide-Body Jet	0.00	0.30	1.01	0.00	7.14	0.05	5.02	17.95
Large Wide-Body Jet	0.00	1.08	3.34	0.25	44.45	0.10	15.10	61.61
Non-Jet	0.00	0.09	0.15	0.01	1.24	0.01	0.52	6.74
Military	0.00	0.00	0.00	0.00	0.03	0.00	0.00	0.00



**LAX Average Daily Runway Use By Aircraft Group - Night Time (10pm - 7am)  
Fourth Quarter 2021**

<b>Arrivals</b> (Average Daily Operations)								
<b>Aircraft Group</b>	<b>06L</b>	<b>06R</b>	<b>07L</b>	<b>07R</b>	<b>24L</b>	<b>24R</b>	<b>25L</b>	<b>25R</b>
Small Jet	0.47	1.09	0.02	0.26	0.03	5.38	5.97	0.05
Small Narrow-Body Jet	1.70	6.75	0.03	1.35	0.13	16.40	19.10	0.13
Large Narrow-Body Jet	1.07	7.02	0.13	0.88	0.20	7.43	13.88	0.10
Small Wide-Body Jet	0.40	4.88	0.48	0.45	0.00	0.54	5.43	0.22
Large Wide-Body Jet	1.20	9.93	0.23	0.83	0.02	2.55	8.41	0.17
Non-Jet	0.04	0.01	0.00	0.02	0.01	0.50	0.35	0.02
Military	0.00	0.00	0.00	0.00	0.00	0.00	0.00	0.00

<b>Departures</b> (Average Daily Operations)								
<b>Aircraft Group</b>	<b>06L</b>	<b>06R</b>	<b>07L</b>	<b>07R</b>	<b>24L</b>	<b>24R</b>	<b>25L</b>	<b>25R</b>
Small Jet	0.00	0.49	0.25	0.00	4.11	0.03	0.24	9.25
Small Narrow-Body Jet	0.00	0.92	1.88	0.00	15.66	0.18	1.32	38.91
Large Narrow-Body Jet	0.00	0.42	0.87	0.00	5.20	0.10	1.02	25.98
Small Wide-Body Jet	0.00	0.10	0.40	0.00	1.13	0.00	1.16	9.25
Large Wide-Body Jet	0.00	0.21	1.04	0.10	8.84	0.02	3.89	23.50
Non-Jet	0.00	0.02	0.02	0.01	0.01	0.00	0.07	1.17
Military	0.00	0.00	0.00	0.00	0.00	0.00	0.00	0.00

## **Summary of Actions Taken by LAWA to Comply with Conditions to the Current Noise Variance for Los Angeles International Airport**

Fourth Quarter 2021

The Los Angeles World Airports (LAWA) continuously works to operate an airport that maintains the highest possible environmental quality of life for surrounding communities. To that end, LAWA continues to take the following actions:

- LAWA continues to implement its Aircraft Noise Mitigation Program (ANMP), designed to fund the mitigation of all incompatible land uses within the noise impact boundary as defined in the State Noise Standards. LAWA updates the ANMP report periodically to ensure that it reasonably represents the mitigation and funding programs that are in place.
- With each second quarter Quarterly Report, LAWA submits an annual update of the ANMP. This update includes the number of dwellings acoustically insulated, the cost of the program, the anticipated funding availability, and the anticipated completion date of the project.
- LAWA continues to monitor and enforce, as appropriate, all of its informal noise abatement procedures in place at LAX, including but not limited to the early turn program, preferential runway use procedures and over ocean operations procedures, as well as the formal maintenance run-up restrictions.
- LAWA continues to work with the Federal Aviation Administration and pilots to improve compliance with its “no turns before the shoreline” policy.
- LAWA will update the April 11, 2014 Report on Implementation of the Preferential Runway Use Policy at LAX within the specified period to reevaluate conditions related to compliance, implementation and possible improvements.
- LAWA continues to provide the information to the County of Los Angeles needed to prepare Quarterly Reports of Noise Monitoring. Included with the noise monitoring information forwarded each quarter is this brief report regarding the implementation of each of the conditions to the Variance.

- LAWA has not yet submitted “any proposed new or modified noise monitoring plan or system” to Caltrans during this Variance period and, therefore, has not needed to provide a copy to the County. The existing airport noise and operations monitoring system was certified by Caltrans in February 2010 and the County was provided with all submitted documentation at that time. The County continues to review and audit the data LAWA submits in each Quarterly Report.
- LAWA continues to include tabular data and graphical illustrations with each Quarterly Report describing and comparing the level and type of usage for each runway at LAX during the quarter. In addition, LAWA is including tabular data describing the daily average number of arrivals and departures by aircraft type and model on each runway during all hours and during nighttime hours from 10 pm to 7 am. LAWA is also now providing the runway usage data to the FAA for their use in monitoring air traffic runway usage.
- LAWA continues to monitor and enforce its maintenance run-up curfew (2300-0600). When applicable, LAWA will include with each Quarterly Report, information regarding monitoring and enforcement activities undertaken during the quarter. There were no enforcement actions reported during the fourth quarter 2021.
- LAWA continues to provide the LAX Noise Comment Phone Line with an option for callers to have a live answer as available, and continues to retrieve any complaint messages and provide appropriate responses in a timely manner.