

# California State Airport Noise Standards Quarterly Report

Third Quarter 2024



LOS ANGELES INTERNATIONAL AIRPORT

Los Angeles World Airports

October 30, 2024

## **TABLE OF CONTENTS**

---

### California State Airport Noise Standards Quarterly Report

1. Division of Aeronautics Form 617
2. Incompatible Land Use Data
3. Daily Aircraft CNEL Data
4. Runway Utilization Report
  - Summary of Runway Use
  - Summary of Runway Flow
5. Average Daily Runway Use by Aircraft Type
  - 24 Hour Average
  - Night-time Average (10pm – 7am)
6. Average Daily Runway Use by Aircraft Group
  - 24 Hour Average
  - Night-time Average (10pm – 7am)
7. Summary of Actions

### Attachment

Noise contour map

**SUMMARY OF STATISTICAL INFORMATION  
FOR  
CALIFORNIA DEPARTMENT OF TRANSPORTATION**

Los Angeles International Airport  
Third Quarter 2024

1. Size of Noise Impact Area as defined in the Noise Standards (California Code of Regulations, Title 21, Chapter 2.5, Subchapter 6):

**386.3 Acres**

---

2. Estimated number of dwelling units included in the Noise Impact Area as defined in the Noise Standards:

**4,879**

---

3. Estimated number of people residing within the Noise Impact Area as defined in the Noise Standards:

**16,097**

---

4. Identification of aircraft type having highest takeoff noise level operating at this airport together with estimated number of operations by this aircraft type during the calendar quarter reporting period:

**B747: 2,490**

---

5. Total number of aircraft operations during the calendar quarter\*:

**150,622**

---

6. Number of Air Carrier operations during the calendar quarter: (Not Mandatory)\*

**142,571**

---

7. Percentage of Air Carrier operations by aircraft certificated under Federal Aviation Regulation (FAR) Part 36, Stage III. (Not Mandatory)

**100 %**

---

8. Estimated number of operations by General Aviation aircraft during the calendar quarter: (Not Mandatory)\*

**3,168**

---

9. Estimated number of operations by Military aircraft during the calendar quarter: (Not Mandatory)\*

**71**

---

# LOS ANGELES INTERNATIONAL AIRPORT

## Incompatible Land Use

### Annual Noise Impact Accumulated by Noise Zone: CNEL 65, 70, and 75 +

<b>3Q24</b>	<b>Total Cumulative Noise Impact Areas - All Jurisdictions</b>											
	<i>CNEL 65 dB and Above</i>				<i>CNEL 70 dB and Above</i>				<i>CNEL 75 dB and Above</i>			
	Land Use	Acres	Dwelling Units	Parcels	Population	Acres	Dwelling Units	Parcels	Population	Acres	Dwelling Units	Parcels
Single Family	186.7	1,282	1,311	4,333	34.5	230	233	857	0.5	1	1	4
Multi-Family	176.4	3,584	1,077	11,738	36.5	647	246	2,234	0.4	2	1	8
Mobile Home	0.6	0	2	0	0.0	0	0	0	0.0	0	0	0
Schools	6.6	0	26	0	3.0	0	17	0	0.0	0	0	0
Churches	15.4	13	32	26	2.4	0	2	0	0.0	0	0	0
Hospitals	0.6	0	2	0	0.0	0	0	0	0.0	0	0	0
<b>Total Incompatible</b>	<b>386.3</b>	<b>4,879</b>	<b>2,450</b>	<b>16,097</b>	<b>76.4</b>	<b>877</b>	<b>498</b>	<b>3,091</b>	<b>0.9</b>	<b>3</b>	<b>2</b>	<b>11</b>

Note: Parcels and dwelling units may not match for single family land uses due to subdivision.  
Parcels for multifamily land uses reflect only the common area parcel, except for condominiums.

# LOS ANGELES INTERNATIONAL AIRPORT

## Incompatible Land Use

### Annual Noise Impact Accumulated by Noise Zone: CNEL 65, 70, and 75 +

<b>3Q24</b>	<b>Total Cumulative Noise Impact Areas - Athens</b>											
	<i>CNEL 65 dB and Above</i>				<i>CNEL 70 dB and Above</i>				<i>CNEL 75 dB and Above</i>			
	Land Use	Acres	Dwelling Units	Parcels	Population	Acres	Dwelling Units	Parcels	Population	Acres	Dwelling Units	Parcels
Single Family	19.5	144	159	479	0.0	0	0	0	0.0	0	0	0
Multi-Family	22.8	413	147	1,308	0.0	0	0	0	0.0	0	0	0
Mobile Home	0.0	0	0	0	0.0	0	0	0	0.0	0	0	0
Schools	0.0	0	0	0	0.0	0	0	0	0.0	0	0	0
Churches	1.3	3	6	6	0.0	0	0	0	0.0	0	0	0
Hospitals	0.0	0	0	0	0.0	0	0	0	0.0	0	0	0
<b>Total Incompatible</b>	<b>43.6</b>	<b>560</b>	<b>312</b>	<b>1,793</b>	<b>0.0</b>	<b>0</b>	<b>0</b>	<b>0</b>	<b>0.0</b>	<b>0</b>	<b>0</b>	<b>0</b>

Note: Parcels and dwelling units may not match for single family land uses due to subdivision.  
Parcels for multifamily land uses reflect only the common area parcel, except for condominiums.

Report Date: Oct, 29 2024

# LOS ANGELES INTERNATIONAL AIRPORT

## Incompatible Land Use

### Annual Noise Impact Accumulated by Noise Zone: CNEL 65, 70, and 75 +

<b>3Q24</b>	<b>Total Cumulative Noise Impact Areas - Del Aire</b>											
	<i>CNEL 65 dB and Above</i>				<i>CNEL 70 dB and Above</i>				<i>CNEL 75 dB and Above</i>			
	Land Use	Acres	Dwelling Units	Parcels	Population	Acres	Dwelling Units	Parcels	Population	Acres	Dwelling Units	Parcels
Single Family	0.0	0	0	0	0.0	0	0	0	0.0	0	0	0
Multi-Family	0.0	0	0	0	0.0	0	0	0	0.0	0	0	0
Mobile Home	0.0	0	0	0	0.0	0	0	0	0.0	0	0	0
Schools	0.0	0	0	0	0.0	0	0	0	0.0	0	0	0
Churches	0.0	0	0	0	0.0	0	0	0	0.0	0	0	0
Hospitals	0.0	0	0	0	0.0	0	0	0	0.0	0	0	0
<b>Total Incompatible</b>	<b>0.0</b>	<b>0</b>	<b>0</b>	<b>0</b>	<b>0.0</b>	<b>0</b>	<b>0</b>	<b>0</b>	<b>0.0</b>	<b>0</b>	<b>0</b>	<b>0</b>

Note: Parcels and dwelling units may not match for single family land uses due to subdivision.  
Parcels for multifamily land uses reflect only the common area parcel, except for condominiums.

Report Date: Oct, 29 2024

# LOS ANGELES INTERNATIONAL AIRPORT

## Incompatible Land Use

### Annual Noise Impact Accumulated by Noise Zone: CNEL 65, 70, and 75 +

<b>3Q24</b>	<b>Total Cumulative Noise Impact Areas - City of El Segundo</b>											
	<i>CNEL 65 dB and Above</i>				<i>CNEL 70 dB and Above</i>				<i>CNEL 75 dB and Above</i>			
	Land Use	Acres	Dwelling Units	Parcels	Population	Acres	Dwelling Units	Parcels	Population	Acres	Dwelling Units	Parcels
Single Family	47.9	313	314	829	2.5	15	15	32	0.0	0	0	0
Multi-Family	13.1	380	146	812	4.2	165	70	339	0.0	0	0	0
Mobile Home	0.0	0	0	0	0.0	0	0	0	0.0	0	0	0
Schools	0.0	0	0	0	0.0	0	0	0	0.0	0	0	0
Churches	0.7	0	2	0	0.0	0	0	0	0.0	0	0	0
Hospitals	0.0	0	0	0	0.0	0	0	0	0.0	0	0	0
<b>Total Incompatible</b>	<b>61.7</b>	<b>693</b>	<b>462</b>	<b>1,641</b>	<b>6.7</b>	<b>180</b>	<b>85</b>	<b>371</b>	<b>0.0</b>	<b>0</b>	<b>0</b>	<b>0</b>

Note: Parcels and dwelling units may not match for single family land uses due to subdivision.  
 Parcels for multifamily land uses reflect only the common area parcel, except for condominiums.

Report Date: Oct, 29 2024

# LOS ANGELES INTERNATIONAL AIRPORT

## Incompatible Land Use

### Annual Noise Impact Accumulated by Noise Zone: CNEL 65, 70, and 75 +

<b>3Q24</b>	<b>Total Cumulative Noise Impact Areas - City of Inglewood</b>											
	<i>CNEL 65 dB and Above</i>				<i>CNEL 70 dB and Above</i>				<i>CNEL 75 dB and Above</i>			
	Land Use	Acres	Dwelling Units	Parcels	Population	Acres	Dwelling Units	Parcels	Population	Acres	Dwelling Units	Parcels
Single Family	65.1	455	463	1,604	1.2	9	9	36	0.0	0	0	0
Multi-Family	90.4	2,026	500	6,771	2.6	82	13	363	0.0	0	0	0
Mobile Home	0.6	0	2	0	0.0	0	0	0	0.0	0	0	0
Schools	1.4	0	1	0	0.0	0	0	0	0.0	0	0	0
Churches	8.1	7	14	11	2.1	0	1	0	0.0	0	0	0
Hospitals	0.6	0	2	0	0.0	0	0	0	0.0	0	0	0
<b>Total Incompatible</b>	<b>166.2</b>	<b>2,488</b>	<b>982</b>	<b>8,387</b>	<b>5.9</b>	<b>91</b>	<b>23</b>	<b>399</b>	<b>0.0</b>	<b>0</b>	<b>0</b>	<b>0</b>

Note: Parcels and dwelling units may not match for single family land uses due to subdivision.  
Parcels for multifamily land uses reflect only the common area parcel, except for condominiums.

Report Date: Oct, 29 2024



# LOS ANGELES INTERNATIONAL AIRPORT

## Incompatible Land Use

### Annual Noise Impact Accumulated by Noise Zone: CNEL 65, 70, and 75 +

<b>3Q24</b>	<b>Total Cumulative Noise Impact Areas - Lennox</b>											
	<i>CNEL 65 dB and Above</i>				<i>CNEL 70 dB and Above</i>				<i>CNEL 75 dB and Above</i>			
	Land Use	Acres	Dwelling Units	Parcels	Population	Acres	Dwelling Units	Parcels	Population	Acres	Dwelling Units	Parcels
Single Family	53.0	364	369	1,401	30.9	206	209	789	0.5	1	1	4
Multi-Family	50.0	765	284	2,846	29.6	400	163	1,532	0.4	2	1	8
Mobile Home	0.0	0	0	0	0.0	0	0	0	0.0	0	0	0
Schools	5.2	0	25	0	3.0	0	17	0	0.0	0	0	0
Churches	1.6	1	3	4	0.3	0	1	0	0.0	0	0	0
Hospitals	0.0	0	0	0	0.0	0	0	0	0.0	0	0	0
<b>Total Incompatible</b>	<b>109.8</b>	<b>1,130</b>	<b>681</b>	<b>4,250</b>	<b>63.8</b>	<b>606</b>	<b>390</b>	<b>2,320</b>	<b>0.9</b>	<b>3</b>	<b>2</b>	<b>11</b>

Note: Parcels and dwelling units may not match for single family land uses due to subdivision.  
Parcels for multifamily land uses reflect only the common area parcel, except for condominiums.

Report Date: Oct, 29 2024

# LOS ANGELES INTERNATIONAL AIRPORT

## Incompatible Land Use

### Annual Noise Impact Accumulated by Noise Zone: CNEL 65, 70, and 75 +

<b>3Q24</b>	<b>Total Cumulative Noise Impact Areas - South and South East LA</b>											
	<i>CNEL 65 dB and Above</i>				<i>CNEL 70 dB and Above</i>				<i>CNEL 75 dB and Above</i>			
	Land Use	Acres	Dwelling Units	Parcels	Population	Acres	Dwelling Units	Parcels	Population	Acres	Dwelling Units	Parcels
Single Family	1.1	6	6	20	0.0	0	0	0	0.0	0	0	0
Multi-Family	0.0	0	0	0	0.0	0	0	0	0.0	0	0	0
Mobile Home	0.0	0	0	0	0.0	0	0	0	0.0	0	0	0
Schools	0.0	0	0	0	0.0	0	0	0	0.0	0	0	0
Churches	2.4	1	6	4	0.0	0	0	0	0.0	0	0	0
Hospitals	0.0	0	0	0	0.0	0	0	0	0.0	0	0	0
<b>Total Incompatible</b>	<b>3.5</b>	<b>7</b>	<b>12</b>	<b>24</b>	<b>0.0</b>	<b>0</b>	<b>0</b>	<b>0</b>	<b>0.0</b>	<b>0</b>	<b>0</b>	<b>0</b>

Note: Parcels and dwelling units may not match for single family land uses due to subdivision.  
Parcels for multifamily land uses reflect only the common area parcel, except for condominiums.

Report Date: Oct, 29 2024

# LOS ANGELES INTERNATIONAL AIRPORT

## Incompatible Land Use

### Annual Noise Impact Accumulated by Noise Zone: CNEL 65, 70, and 75 +

<b>3Q24</b>	<b>Total Cumulative Noise Impact Areas - Westchester/Playa Del Rey</b>											
	<i>CNEL 65 dB and Above</i>				<i>CNEL 70 dB and Above</i>				<i>CNEL 75 dB and Above</i>			
	Land Use	Acres	Dwelling Units	Parcels	Population	Acres	Dwelling Units	Parcels	Population	Acres	Dwelling Units	Parcels
Single Family	0.0	0	0	0	0.0	0	0	0	0.0	0	0	0
Multi-Family	0.0	0	0	0	0.0	0	0	0	0.0	0	0	0
Mobile Home	0.0	0	0	0	0.0	0	0	0	0.0	0	0	0
Schools	0.0	0	0	0	0.0	0	0	0	0.0	0	0	0
Churches	1.3	1	1	1	0.0	0	0	0	0.0	0	0	0
Hospitals	0.0	0	0	0	0.0	0	0	0	0.0	0	0	0
<b>Total Incompatible</b>	<b>1.3</b>	<b>1</b>	<b>1</b>	<b>1</b>	<b>0.0</b>	<b>0</b>	<b>0</b>	<b>0</b>	<b>0.0</b>	<b>0</b>	<b>0</b>	<b>0</b>

Note: Parcels and dwelling units may not match for single family land uses due to subdivision.  
 Parcels for multifamily land uses reflect only the common area parcel, except for condominiums.

Report Date: Oct, 29 2024



July	PDR1	PDR2	ESG1	ESG2	ESG3	ESG5	DEL1	WCH2	WCH3	WCH5	WCH6	ING1	ING2	ING3	ING6	ING8	LNX1	LNX2	LNX3	LNX4	ATH2	SLA1	SLA3	SLA5	SLA7
1 Mon	69	64	63	68	60	59	68	59	60	76	65	61	68	68	69	61	75	61	61	64	66	66	61	64	64
2 Tue	69	63	62	67	64	56	50	55	57	74	63	66	65	66	70	62	75	65	62	65	68	64	62	65	65
3 Wed	65	59	64	66	59	58	55	55	64	76	68	62	67	68	72	61	76	63	63	66	66	66	62	67	65
4 Thu	67	62	61	67	60	56	51	57	66	74	63	64	64	65	68	60	73	60	61	64	68	63	59	63	65
5 Fri	68	63	63	67	61	56	51	58	59	72	64	61	65	66	70	65	76	64	64	67	67	65	63	67	66
6 Sat	70	64	63	67	58	52	42	60	60	72	61	60	65	65	69	62	76	64	67	66	71	66	62	61	65
7 Sun	69	63	62	66	58	53	42	56	57	74	62	59	66	66	69	60	76	61	62	65	67	64	62	69	65
8 Mon	66	60	62	65	58	57	46	57	58	73	62	58	65	65	70	60	77	63	65	66	68	64	62	65	65
9 Tue	66	60	61	66	62	59	50	55	57	73	63	60	65	66	71	62	77	63	63	67	69	64	63	66	66
10 Wed	68	63	64	68	62	60	47	57	58	73	62	60	65	66	71	62	77	63	64	66	68	64	63	66	66
11 Thu	65	60	62	67	61	57	43	54	55	73	62	59	66	65	70	61	77	62	64	66	68	64	64	66	66
12 Fri	65	59	62	66	60	56	47	56	56	73	62	59	65	67	70	62	76	63	64	66	67	64	63	65	66
13 Sat	68	62	64	68	61	56	48	55	57	73	61	59	65	66	71	62	76	63	63	66	68	64	63	65	65
14 Sun	67	62	63	68	61	57	36	56	58	73	62	60	66	66	70	61	76	62	64	66	67	64	62	65	65
15 Mon	67	62	64	67	61	57	49	58	60	73	63	60	66	66	71	61	76	63	64	67	68	64	64	66	66
16 Tue	68	62	63	66	60	56	51	58	58	66	57	62	62	67	70	63	74	64	62	66	67	63	62	68	65
17 Wed	66	61	64	68	61	60	39	57		64	67	61	60	66	69	60	74	62	61	66	66	62	61	64	64
18 Thu	67	61	62	67	59	56	48	57	--	72	61	61	65	67	70	62	75	64	62	65	67	64	62	65	65
19 Fri	64	58	59	65	58	54	49	55	--	74	62	60	66	67	70	63	76	63	62	66	67	64	63	65	65
20 Sat	65	59	62	66	58	54	45	55	--	74	63	60	66	67	70	63	76	62	63	66	67	65	64	67	64
21 Sun	66	61	63	67	60	55	42	56	--	73	62	60	65	66	69	63	76	61	62	65	67	64	62	65	65
22 Mon	67	63	63	67	60	60	42	58	--	76	65	62	68	68	68	60	74	61	61	64	65	66	61	63	64
23 Tue	68	62	63	67	60	56	50	57	--	74	63	60	67	68	70	62	75	64	61	65	68	65	63	64	65
24 Wed	68	63	63	67	61	57	49	58	--	74	63	61	67	67	71	63	75	65	64	65	70	65	65	65	65
25 Thu	67	62	63	67	61	55	51	58	60	75	69	62	67	68	70	62	75	63	63	66	68	66	63	65	65
26 Fri	69	62	63	67	61	56	48	59	60	75	64	62	68	67	70	64	76	63	63	66	68	68	62	65	65
27 Sat	68	62	62	66	60	55	42	61	60	75	63	61	67	68	70	61	75	62	62	66	67	65	62	65	65
28 Sun	67	62	63	67	60	56	47	58	60	74	63	61	67	67	69	64	75	64	62	66	67	65	62	65	65
29 Mon	68	63	64	68	61	57	45	60	61	74	63	60	66	66	72	61	76	62	63	66	67	64	63	65	65
30 Tue	67	61	63	67	60	57	49	58	58	74	63	61	66	67	70	62	76	62	64	66	67	63	62	65	64
31 Wed	66	61	62	66	60	56	53	56	58	73	62	61	66	66	71	62	76	63	64	66	68	64	63	66	66



August	PDR1	PDR2	ESG1	ESG2	ESG3	ESG5	DEL1	WCH2	WCH3	WCH5	WCH6	ING1	ING2	ING3	ING6	ING8	LNX1	LNX2	LNX3	LNX4	ATH2	SLA1	SLA3	SLA5	SLA7
1 Thu	67	64	62	67	61	56	43	57	57	74	63	60	66	67	70	61	76	62	62	66	67	65	63	65	65
2 Fri	68	63	63	67	61	58	53	60	60	74	63	61	68	68	70	62	76	62	64	67	67	65	63	65	65
3 Sat	67	62	63	67	61	55	58	59	62	73	62	60	66	66	70	62	75	65	62	66	67	64	63	65	65
4 Sun	67	62	63	66	60	56	52	59	60	73	62	60	66	67	70	65	76	62	63	66	67	65	63	65	65
5 Mon	68	64	64	67	60	57	49	61	60	74	64	61	67	67	69	59	74	61	61	64	65	65	60	63	63
6 Tue	68	63	64	66	60	57	49	57	55	74	63	60	67	66	69	61	75	62	61	64	66	65	63	64	64
7 Wed	68	63	63	67	59	53	53	59	59	74	68	60	66	66	70	62	74	65	61	64	67	64	61	64	65
8 Thu	67	61	61	66	60	54	47	58	56	74	65	60	66	66	70	64	75	66	63	65	67	64	62	65	65
9 Fri	68	62	62	67	59	55	49	57	57	74	63	60	67	67	70	62	76	63	63	66	67	65	63	65	65
10 Sat	68	63	63	67	62	63	41	59	58	73	62	59	65	66	70	63	75	61	63	65	67	64	62	65	65
11 Sun	68	63	63	68	61	58	42	57	57	74	62	59	67	69	70	60	75	61	65	65	67	65	62	65	65
12 Mon	67	63	63	67	60	58	45	58	59	74	64	60	66	67	69	62	75	62	61	65	67	66	62	65	65
13 Tue	67	62	62	66	59	55	51	57	58	73	62	59	65	66	70	61	76	62	61	66	67	64	63	65	65
14 Wed	67	62	63	66	60	59	46	59	61	73	64	61	65	66	70	61	75	65	62	65	67	64	62	65	65
15 Thu	68	63	63	68	62	56	44	61	61	74	63	60	66	66	70	61	76	62	62	66	67	65	62	65	65
16 Fri	67	62	63	67	60	54	43	59	57	73	63	60	67	66	70	62	76	63	63	66	67	64	62	65	65
17 Sat	66	61	63	67	59	54	41	57	58	72	61	58	65	65	70	61	75	62	62	65	67	64	62	65	65
18 Sun	66	61	63	67	59	55	55	59	59	73	62	59	67	66	70	61	75	61	62	65	67	64	62	65	65
19 Mon	67	63	64	67	61	57	49	64	61	75	64	61	67	68	69	60	74	63	61	65	66	67	61	64	63
20 Tue	68	62	63	66	60	57	50	61	64	73	63	60	66	66	70	62	74	63	62	65	66	64	61	64	63
21 Wed	66	62	63	66	59	54	48	61	60	74	62	60	66	66	69	62	74	65	61	64	67	65	61	64	64
22 Thu	68	62	63	66	61	54	46	60	61		62	60	66	66	71	62	75	64	62	65	67	65	62	65	65
23 Fri	68	63	63	67	60	54	46	58	61		62	60	66	67	70	62	76	62	63	66	68	65	63	66	66
24 Sat	67	61	63	66	59	56	41	57	58	--	61	63	65	66	69	61	74	61	62	65	67	64	61	65	64
25 Sun	68	62	63	67	60	55	45	59	60	--	62	60	66	66	69	61	75	61	61	65	67	65	62	65	64
26 Mon	67	63	63	67	60	54	43	59	61	75	63	59	66	68	69	60	75	61	61	65	66	65	62	65	65
27 Tue	67	61	62	67	60	56	53	57	57	72	61	60	65	65	69	60	75	62	64	66	66	63	62	65	65
28 Wed	66	61	63	67	60	56	45	57	55	72	61	60	64	65	70	63	76	62	63	66	67	63	62	66	65
29 Thu	68	62	63	67	62	56	47	57	56	73	62	60	66	66	70	61	76	62	64	68	67	65	63	64	65
30 Fri	67	61	62	66	61	55	48	57	57	74	62	60	65	66	70	61	76	63	63	66	67	65	64	66	65
31 Sat	67	61	62	67	61	57	46	57	60	72	61	62	65	65	69	64	75	62	62	65	67	63	62	65	65



September	PDR1	PDR2	ESG1	ESG2	ESG3	ESG5	DEL1	WCH2	WCH3	WCH5	WCH6	ING1	ING2	ING3	ING6	ING8	LNX1	LNX2	LNX3	LNX4	ATH2	SLA1	SLA3	SLA5	SLA7
1 Sun	66	61	63	67	61	56	40	56	57	72	61	58	64	65	69	60	76	61	61	65	67	63	62	65	65
2 Mon	67	62	62	66	59	54	34	57	58	73	62	59	65	66	69	59	75	60	63	65	66	64	62	65	64
3 Tue	67	62	62	65	59	59	42	59	59	73	62	60	66	66	69	60	74	62	60	64	66	63	61	63	63
4 Wed	66	61	63	67	64	59	55	58	61	73	61	60	64	65	69	61	74	63	62	64	66	64	61	63	64
5 Thu	67	62	64	67	67	65	62	63	65	73	63	61	65	65	70	61	74	66	62	64	66	63	60	64	63
6 Fri	67	61	63	66	61	58	52	61	63	72	62	60	64	65	69	61	74	64	62	64	66	63	62	--	65
7 Sat	66	61	62	66	59	57	45	58	60	71	60	57	64	64	68	59	74	61	61	64	65	62	60	--	65
8 Sun	67	61	64	67	65	66	59	63	66	72	62	58	65	66	68	59	76	61	64	64	65	64	60	--	63
9 Mon	65	61	63	67	66	65	60	60	64	73	62	59	65	65	69	59	75	61	63	65	66	63	61	--	64
10 Tue	67	61	63	67	63	59	42	59	61	72	61	58	64	66	69	61	75	61	62	66	66	62	62	--	64
11 Wed	67	61	62	66	58	53	39	57	58	71	60	59	64	64	71	64	75	61	62	65	66	63	62	65	65
12 Thu	67	61	62	66	61	54	46	57	57	72	61	59	65	65	69	60	76	62	62	65	67	63	62	65	65
13 Fri	67	62	63	67	60	55	56	58	60	73	62	59	65	66	71	61	76	62	63	65	67	64	62	65	66
14 Sat	66	60	62	66	60	56	35	55	55	71	60	58	64	65	70	61	76	62	64	67	67	63	62	65	65
15 Sun	67	62	63	67	60	56	41	57	55	74	62	62	66	67	69	61	75	61	63	65	66	65	62	65	65
16 Mon	67	63	63	67	60	55	46	60	59	74	63	61	67	67	70	62	74	64	62	64	66	65	61	64	66
17 Tue	67	63	62	66	59	55	52	60	60	73	62	60	65	66	69	61	74	63	63	64	66	64	62	64	65
18 Wed	67	62	62	66	59	55	44	59	59	73	62	60	66	66	69	62	74	63	61	64	66	64	61	64	64
19 Thu	68	62	63	69	61	55	43	58	59	74	63	60	66	67	69	62	74	64	64	64	67	65	62	65	65
20 Fri	68	62	63	67	61	56	45	59	60	74	63	60	66	67	70	61	76	62	63	66	67	65	63	65	65
21 Sat	68	62	63	67	59	56	39	59	59	72	61	58	65	65	70	61	76	62	62	66	67	64	63	65	66
22 Sun	65	59	60	65	58	54	42	56	56	73	62	58	65	65	69	59	75	61	61	65	66	63	61	64	64
23 Mon	64	59	57	63	54	53	33	59	59	72	62	57	64	64	68	58	76	61	62	64	66	62	60	63	63
24 Tue	66	58	59	65	58	55	46	57	56	72	62	58	64	65	69	59	76	67	63	65	65	61	61	63	63
25 Wed	67	61	61	66	59	56	34	58	60	72	61	60	65	66	70	60	76	62	63	66	66	63	62	64	64
26 Thu	67	61	62	66	60	54	43	59	60	73	62	59	65	66	70	60	76	63	63	66	67	64	62	65	65
27 Fri	66	59	59	65	58	53	45	58	58	73	63	59	65	66	70	62	76	62	64	67	66	63	62	64	64
28 Sat	67	60	61	66	59	57	36	56	56	73	63	58	65	65	69	59	76	63	63	66	67	63	61	64	64
29 Sun	67	--	61	66	59	54	45	58	58	73	62	59	66	66	69	60	75	61	61	65	65	63	62	64	63
30 Mon	67	61	61	66	59	55	44	58	57	74	63	60	66	67	68	62	74	62	60	64	65	64	61	63	63



Runway Utilization Report  
**Summary of Runway Use (Average)**  
 Los Angeles International Airport

Period : 07/01/2024 to 09/30/2024

Airline : ALL

Aircraft : ALL

Time Period	Percent Daily Operations Per Runway								Average Operations	Runway Complex		Runway Flow		In Board	Out Board	
	06L	06R	07L	07R	24L	24R	25L	25R		South	North	West	East			
<b>Departures</b>																
<b>Total Hours</b>																
24 Hours	0%	0%	<1%	0%	31%	4%	4%	60%	814	64%	36%	100%	<1 %	91%	9%	
<b>CNEL Hours</b>																
0700 - 1900	0%	0%	0%	0%	34%	5%	4%	56%	537	60%	40%	100%	0%	91%	9%	
1900 - 2200	0%	0%	0%	0%	31%	5%	4%	60%	106	64%	36%	100%	0%	91%	9%	
2200 - 0700	0%	0%	<1%	0%	21%	2%	3%	74%	171	77%	23%	100%	<1 %	95%	5%	
<b>Contra Hours</b>																
Midnight - 0630	0%	0%	0%	0%	17%	2%	5%	75%	93	81%	19%	100%	0%	93%	7%	
0630 - Midnight	0%	0%	<1%	0%	33%	5%	4%	58%	721	62%	38%	100%	<1 %	91%	9%	
<b>Arrivals</b>																
<b>Total Hours</b>																
24 Hours	<1%	<1%	<1%	0%	1%	42%	56%	1%	813	57%	43%	100%	<1 %	2%	98%	
<b>CNEL Hours</b>																
0700 - 1900	0%	0%	0%	0%	1%	44%	54%	<1%	531	55%	45%	100%	0%	2%	98%	
1900 - 2200	0%	0%	0%	0%	<1%	44%	54%	<1%	148	55%	45%	100%	0%	1%	99%	
2200 - 0700	<1%	<1%	<1%	0%	1%	32%	62%	4%	134	66%	34%	99%	<1 %	6%	94%	
<b>Contra Hours</b>																
Midnight - 0630	<1%	2%	<1%	0%	2%	21%	63%	12%	50	74%	26%	97%	3%	16%	84%	
0630 - Midnight	0%	<1%	0%	0%	1%	43%	55%	<1%	764	56%	44%	100%	<1 %	2%	98%	

All values are rounded to the nearest whole number.



Runway Utilization Report  
 Summary of Runway Flow (Average)  
 Los Angeles International Airport

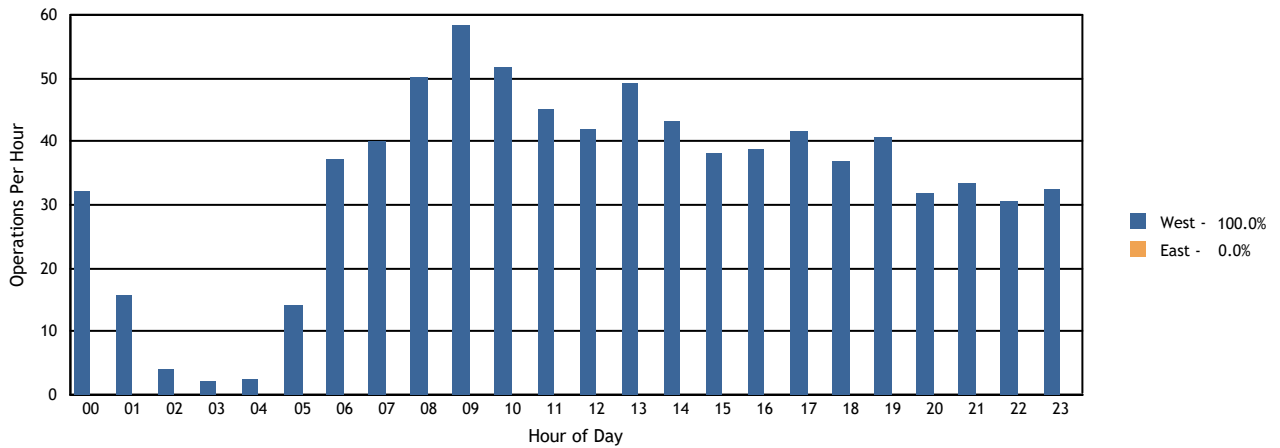
Period: 07/01/2024 to 09/30/2024

Airline : ALL  
 Aircraft : ALL

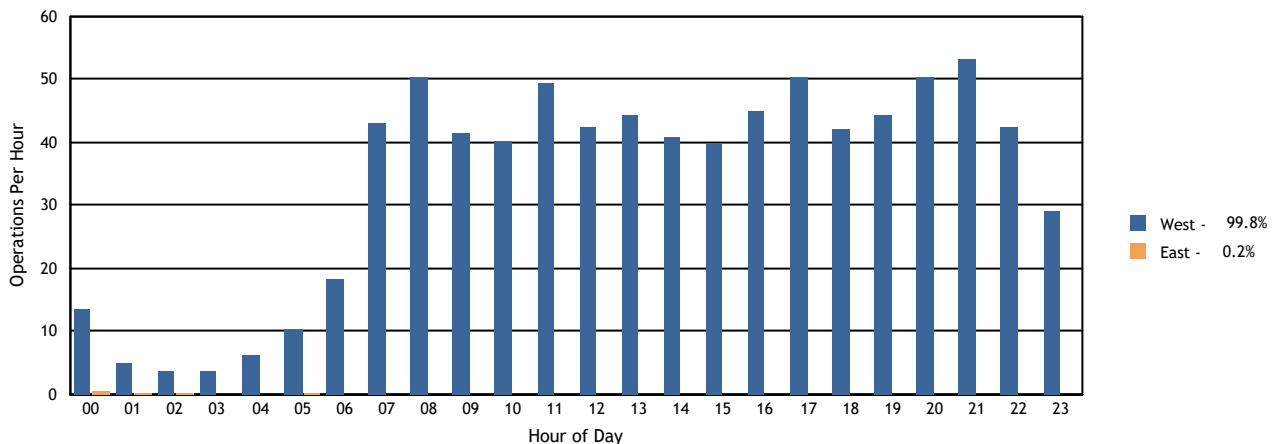
Time Period	Departures			Arrivals			Departures		Arrivals	
	West	East	Average	West	East	Average	West	East	West	East
<b>Total Hours</b>										
24 Hours	814	<1	814	812	1	813	100%	<1%	100%	<1%
<b>CNEL Hours</b>										
0700-1900	537	0	537	531	0	531	100%	0%	100%	0%
1900-2200	106	0	106	148	0	148	100%	0%	100%	0%
2200-0700	171	<1	171	133	1	134	100%	<1%	99%	<1%
<b>Contra Hours</b>										
Midnight - 0630	93	0	93	48	1	50	100%	0%	97%	3%
0630 - Midnight	721	<1	721	764	<1	764	100%	<1%	100%	<1%

All percentages are rounded to the nearest whole number.

Departures Per Hour by Operational Direction



Arrivals Per Hour by Operational Direction





## LAX Average Daily Runway Use By Aircraft Type - 24 Hours Third Quarter 2024

Arrivals (Average Daily Operations)								
Aircraft Type	06L	06R	07L	07R	24L	24R	25L	25R
A19N	0.00	0.00	0.00	0.00	0.00	0.01	0.01	0.00
A20N	0.01	0.03	0.00	0.00	0.15	7.70	18.58	0.32
A21N	0.01	0.07	0.00	0.00	0.85	19.51	42.87	0.43
A306	0.00	0.00	0.00	0.00	0.00	0.00	0.02	0.00
A310	0.00	0.00	0.00	0.00	0.00	0.00	0.01	0.00
A319	0.00	0.01	0.00	0.00	0.17	6.27	8.14	0.04
A320	0.00	0.01	0.00	0.00	0.53	15.92	26.91	0.25
A321	0.03	0.14	0.00	0.00	0.47	21.15	56.02	0.72
A332	0.00	0.01	0.00	0.00	0.18	4.35	3.01	0.10
A333	0.00	0.01	0.00	0.00	0.03	0.87	2.37	0.07
A342	0.00	0.00	0.00	0.00	0.00	0.00	0.01	0.00
A343	0.00	0.00	0.00	0.00	0.00	0.22	0.24	0.00
A345	0.00	0.00	0.00	0.00	0.00	0.00	0.01	0.00
A359	0.00	0.01	0.00	0.00	0.15	6.70	6.23	0.14
A35K	0.00	0.00	0.00	0.00	0.03	1.71	1.21	0.00
A388	0.00	0.00	0.00	0.00	0.22	7.71	0.30	0.00
AC90	0.00	0.00	0.00	0.00	0.00	0.00	0.01	0.00
ASTR	0.00	0.00	0.00	0.00	0.00	0.00	0.01	0.00
B350	0.00	0.00	0.00	0.00	0.04	1.17	0.61	0.01
B38M	0.01	0.07	0.00	0.00	0.95	26.93	23.54	0.37
B39M	0.01	0.05	0.00	0.00	0.30	8.65	21.80	0.28
B733	0.00	0.00	0.00	0.00	0.00	0.00	0.01	0.00
B737	0.01	0.08	0.00	0.00	0.91	25.65	11.38	0.16
B738	0.03	0.13	0.00	0.00	1.01	34.00	40.25	0.55
B739	0.02	0.07	0.00	0.00	0.41	22.40	27.08	0.29
B744	0.01	0.05	0.00	0.00	0.01	0.39	8.38	0.42
B748	0.00	0.02	0.00	0.00	0.09	1.21	2.92	0.00
B752	0.00	0.01	0.00	0.00	0.11	4.80	10.86	0.20
B753	0.00	0.01	0.00	0.00	0.09	2.74	7.49	0.05
B762	0.00	0.00	0.00	0.00	0.00	0.00	0.08	0.01
B763	0.02	0.14	0.00	0.00	0.13	4.84	19.01	1.89
B764	0.00	0.00	0.00	0.00	0.01	0.35	0.52	0.00
B772	0.01	0.04	0.00	0.00	0.05	2.23	6.13	0.18
B77L	0.00	0.07	0.00	0.00	0.01	0.55	11.49	0.76
B77W	0.00	0.01	0.00	0.00	0.42	14.97	8.40	0.21
B788	0.00	0.02	0.01	0.00	0.11	3.72	2.72	0.18
B789	0.00	0.02	0.00	0.00	0.30	12.03	11.79	0.21
B78X	0.00	0.00	0.00	0.00	0.05	1.37	0.90	0.02
BCS3	0.00	0.00	0.00	0.00	0.02	0.67	2.75	0.00
BE20	0.00	0.00	0.00	0.00	0.00	0.11	0.05	0.00

Departures (Average Daily Operations)								
Aircraft Type	06L	06R	07L	07R	24L	24R	25L	25R
A19N	0.00	0.00	0.00	0.00	0.00	0.00	0.00	0.02
A20N	0.00	0.00	0.00	0.00	5.75	0.63	0.13	20.27
A21N	0.00	0.00	0.00	0.00	17.10	2.53	0.36	43.71
A306	0.00	0.00	0.00	0.00	0.00	0.00	0.00	0.02
A310	0.00	0.00	0.00	0.00	0.00	0.00	0.01	0.00
A319	0.00	0.00	0.00	0.00	6.77	0.55	0.07	7.27
A320	0.00	0.00	0.00	0.00	12.80	2.37	0.15	28.41
A321	0.00	0.00	0.00	0.00	17.45	1.88	0.23	58.95
A332	0.00	0.00	0.01	0.00	3.45	0.71	0.37	3.11
A333	0.00	0.00	0.00	0.00	0.49	0.02	0.33	2.51
A342	0.00	0.00	0.00	0.00	0.00	0.00	0.00	0.01
A343	0.00	0.00	0.00	0.00	0.10	0.00	0.01	0.34
A345	0.00	0.00	0.00	0.00	0.00	0.00	0.01	0.00
A359	0.00	0.00	0.00	0.00	4.65	0.13	0.09	8.51
A35K	0.00	0.00	0.00	0.00	0.83	0.05	0.01	2.05
A388	0.00	0.00	0.00	0.00	5.75	0.00	2.50	0.00
AC90	0.00	0.00	0.00	0.00	0.00	0.00	0.00	0.01
ASTR	0.00	0.00	0.00	0.00	0.00	0.00	0.01	0.00
B350	0.00	0.00	0.00	0.00	0.28	0.09	0.21	1.26
B38M	0.00	0.00	0.00	0.00	25.22	4.32	0.03	22.36
B39M	0.00	0.00	0.00	0.00	4.26	0.89	0.13	25.86
B733	0.00	0.00	0.00	0.00	0.00	0.00	0.00	0.01
B737	0.00	0.00	0.00	0.00	29.55	3.53	0.08	5.00
B738	0.00	0.00	0.00	0.00	29.67	4.67	0.33	41.24
B739	0.00	0.00	0.00	0.00	16.61	2.43	0.12	31.12
B744	0.00	0.00	0.00	0.00	0.03	0.00	2.93	6.33
B748	0.00	0.00	0.00	0.00	0.71	0.03	3.40	0.11
B752	0.00	0.00	0.00	0.00	6.68	0.82	0.17	8.34
B753	0.00	0.00	0.00	0.00	1.36	0.35	0.08	8.64
B762	0.00	0.00	0.00	0.00	0.00	0.00	0.04	0.04
B763	0.00	0.00	0.00	0.00	6.55	0.74	3.86	15.07
B764	0.00	0.00	0.00	0.00	0.57	0.10	0.00	0.22
B772	0.00	0.00	0.00	0.00	0.46	0.07	0.15	8.02
B77L	0.00	0.00	0.00	0.00	0.00	0.01	4.48	8.38
B77W	0.00	0.00	0.00	0.00	5.12	0.18	0.35	18.48
B788	0.00	0.00	0.00	0.00	2.04	0.22	0.17	4.30
B789	0.00	0.00	0.00	0.00	5.13	0.41	0.02	18.92
B78X	0.00	0.00	0.00	0.00	0.73	0.07	0.00	1.57
BCS3	0.00	0.00	0.00	0.00	0.54	0.01	0.00	2.89
BE20	0.00	0.00	0.00	0.00	0.02	0.01	0.02	0.11

LAX Noise Management

Source: LAX ANOMS, based on available FAA radar flight track data.

note: Aircraft Type for certain military operations may not be available through our data source, therefore will not be included in the report.

## LAX Average Daily Runway Use By Aircraft Type - 24 Hours Third Quarter 2024

Arrivals (Average Daily Operations)								
Aircraft Type	06L	06R	07L	07R	24L	24R	25L	25R
BE30	0.00	0.00	0.00	0.00	0.00	0.01	0.00	0.00
BE40	0.00	0.00	0.00	0.00	0.00	0.01	0.22	0.00
BE58	0.00	0.00	0.00	0.00	0.00	0.00	0.01	0.00
C152	0.00	0.00	0.00	0.00	0.00	0.01	0.01	0.00
C172	0.00	0.00	0.00	0.00	0.00	0.01	0.02	0.00
C182	0.00	0.00	0.00	0.00	0.00	0.09	0.34	0.00
C210	0.00	0.00	0.00	0.00	0.00	0.01	0.08	0.00
C25A	0.00	0.00	0.00	0.00	0.01	0.11	0.14	0.00
C25B	0.00	0.00	0.00	0.00	0.01	0.12	0.42	0.00
C25C	0.00	0.00	0.00	0.00	0.00	0.01	0.04	0.00
C525	0.00	0.00	0.00	0.00	0.00	0.02	0.10	0.00
C550	0.00	0.00	0.00	0.00	0.00	0.00	0.05	0.00
C560	0.00	0.00	0.00	0.00	0.00	0.02	0.05	0.00
C56X	0.00	0.00	0.00	0.00	0.00	0.29	0.65	0.00
C650	0.00	0.00	0.00	0.00	0.00	0.00	0.05	0.00
C680	0.00	0.00	0.00	0.00	0.01	0.13	0.29	0.00
C68A	0.00	0.00	0.00	0.00	0.02	0.62	1.70	0.01
C700	0.00	0.00	0.00	0.00	0.00	0.24	0.95	0.00
C750	0.00	0.00	0.00	0.00	0.01	0.22	0.54	0.01
CL30	0.00	0.00	0.00	0.00	0.02	0.37	1.32	0.00
CL35	0.00	0.00	0.00	0.00	0.04	0.76	1.68	0.03
CL60	0.00	0.00	0.00	0.00	0.02	0.37	1.07	0.02
CRJ2	0.00	0.00	0.00	0.00	0.00	0.32	0.99	0.01
CRJ7	0.00	0.00	0.00	0.00	0.28	8.02	7.34	0.05
CRJ9	0.00	0.00	0.00	0.00	0.00	0.04	0.02	0.00
E135	0.00	0.00	0.00	0.00	0.01	0.20	0.74	0.00
E145	0.00	0.00	0.00	0.00	0.00	0.21	0.96	0.00
E170	0.00	0.00	0.00	0.00	0.23	6.51	9.05	0.07
E190	0.00	0.00	0.00	0.00	0.00	0.01	0.14	0.00
E35L	0.00	0.00	0.00	0.00	0.00	0.04	0.13	0.00
E50P	0.00	0.00	0.00	0.00	0.00	0.05	0.04	0.00
E545	0.00	0.00	0.00	0.00	0.00	0.29	0.42	0.00
E550	0.00	0.00	0.00	0.00	0.00	0.10	0.53	0.01
E55P	0.00	0.00	0.00	0.00	0.01	0.49	1.29	0.00
E75L	0.00	0.00	0.00	0.00	1.65	54.07	19.89	0.25
E75S	0.00	0.00	0.00	0.00	0.00	0.02	0.08	0.00
EA50	0.00	0.00	0.00	0.00	0.00	0.00	0.02	0.00
F2TH	0.00	0.00	0.00	0.00	0.00	0.13	0.40	0.00
F900	0.00	0.00	0.00	0.00	0.01	0.11	0.34	0.00
FA50	0.00	0.00	0.00	0.00	0.00	0.02	0.11	0.00

Departures (Average Daily Operations)								
Aircraft Type	06L	06R	07L	07R	24L	24R	25L	25R
BE40	0.00	0.00	0.00	0.00	0.00	0.00	0.13	0.10
BE58	0.00	0.00	0.00	0.00	0.00	0.00	0.00	0.01
C152	0.00	0.00	0.00	0.00	0.00	0.00	0.01	0.01
C172	0.00	0.00	0.00	0.00	0.00	0.00	0.00	0.03
C182	0.00	0.00	0.00	0.00	0.01	0.00	0.02	0.39
C210	0.00	0.00	0.00	0.00	0.00	0.00	0.00	0.09
C25A	0.00	0.00	0.00	0.00	0.02	0.01	0.05	0.17
C25B	0.00	0.00	0.00	0.00	0.02	0.01	0.07	0.46
C25C	0.00	0.00	0.00	0.00	0.00	0.00	0.03	0.02
C525	0.00	0.00	0.00	0.00	0.01	0.00	0.03	0.08
C550	0.00	0.00	0.00	0.00	0.00	0.00	0.01	0.04
C560	0.00	0.00	0.00	0.00	0.00	0.00	0.02	0.07
C56X	0.00	0.00	0.00	0.00	0.02	0.00	0.26	0.67
C650	0.00	0.00	0.00	0.00	0.00	0.00	0.01	0.04
C680	0.00	0.00	0.00	0.00	0.00	0.00	0.16	0.24
C68A	0.00	0.00	0.00	0.00	0.02	0.02	0.72	1.59
C700	0.00	0.00	0.00	0.00	0.05	0.01	0.29	0.82
C750	0.00	0.00	0.00	0.00	0.00	0.00	0.23	0.55
CL30	0.00	0.00	0.00	0.00	0.07	0.04	0.62	0.99
CL35	0.00	0.00	0.00	0.00	0.08	0.04	0.91	1.50
CL60	0.00	0.00	0.00	0.00	0.03	0.04	0.52	0.87
CRJ2	0.00	0.00	0.00	0.00	0.00	0.00	0.07	1.25
CRJ7	0.00	0.00	0.00	0.00	4.65	1.02	0.00	10.04
CRJ9	0.00	0.00	0.00	0.00	0.01	0.02	0.00	0.03
E135	0.00	0.00	0.00	0.00	0.00	0.00	0.26	0.68
E145	0.00	0.00	0.00	0.00	0.00	0.02	0.51	0.64
E170	0.00	0.00	0.00	0.00	1.36	0.60	0.04	13.85
E190	0.00	0.00	0.00	0.00	0.00	0.00	0.04	0.11
E35L	0.00	0.00	0.00	0.00	0.00	0.00	0.04	0.10
E50P	0.00	0.00	0.00	0.00	0.00	0.00	0.01	0.08
E545	0.00	0.00	0.00	0.00	0.01	0.00	0.18	0.54
E550	0.00	0.00	0.00	0.00	0.00	0.01	0.16	0.48
E55P	0.00	0.00	0.00	0.00	0.09	0.00	0.60	1.11
E75L	0.00	0.00	0.00	0.00	34.83	6.77	0.01	34.28
E75S	0.00	0.00	0.00	0.00	0.08	0.00	0.00	0.02
EA50	0.00	0.00	0.00	0.00	0.00	0.00	0.00	0.02
F2TH	0.00	0.00	0.00	0.00	0.00	0.00	0.15	0.37
F900	0.00	0.00	0.00	0.00	0.00	0.00	0.14	0.33
FA50	0.00	0.00	0.00	0.00	0.00	0.00	0.05	0.05
FA7X	0.00	0.00	0.00	0.00	0.01	0.01	0.17	0.26

LAX Noise Management

Source: LAX ANOMS, based on available FAA radar flight track data.

note: Aircraft Type for certain military operations may not be available through our data source, therefore will not be included in the report.

## LAX Average Daily Runway Use By Aircraft Type - 24 Hours Third Quarter 2024

Arrivals (Average Daily Operations)								
Aircraft Type	06L	06R	07L	07R	24L	24R	25L	25R
FA7X	0.00	0.00	0.00	0.00	0.01	0.07	0.37	0.00
FA8X	0.00	0.00	0.00	0.00	0.00	0.01	0.05	0.00
G150	0.00	0.00	0.00	0.00	0.00	0.04	0.08	0.00
G280	0.00	0.00	0.00	0.00	0.00	0.10	0.46	0.00
GA5C	0.00	0.00	0.00	0.00	0.00	0.07	0.22	0.00
GA6C	0.00	0.00	0.00	0.00	0.00	0.07	0.36	0.00
GALX	0.00	0.00	0.00	0.00	0.00	0.04	0.36	0.00
GL5T	0.00	0.00	0.00	0.00	0.00	0.16	0.33	0.00
GL7T	0.00	0.00	0.00	0.00	0.01	0.26	0.73	0.01
GLEX	0.00	0.01	0.00	0.00	0.05	0.38	1.35	0.03
GLF4	0.00	0.00	0.00	0.00	0.00	0.41	1.32	0.04
GLF5	0.00	0.01	0.00	0.00	0.01	0.50	1.66	0.02
GLF6	0.00	0.00	0.00	0.00	0.02	0.57	1.42	0.01
H25B	0.00	0.00	0.00	0.00	0.01	0.12	1.01	0.01
H25C	0.00	0.00	0.00	0.00	0.00	0.01	0.07	0.00
HA4T	0.00	0.00	0.00	0.00	0.00	0.00	0.02	0.00
HDJT	0.00	0.00	0.00	0.00	0.00	0.03	0.07	0.00
J328	0.00	0.00	0.00	0.00	0.00	0.00	0.01	0.00
LJ31	0.00	0.00	0.00	0.00	0.00	0.00	0.01	0.00
LJ35	0.00	0.00	0.00	0.00	0.00	0.00	0.12	0.00
LJ40	0.00	0.00	0.00	0.00	0.00	0.00	0.02	0.00
LJ45	0.00	0.00	0.00	0.00	0.00	0.08	0.30	0.01
LJ60	0.00	0.00	0.00	0.00	0.00	0.07	0.35	0.00
LJ75	0.00	0.00	0.00	0.00	0.00	0.03	0.10	0.00
M600	0.00	0.00	0.00	0.00	0.00	0.00	0.01	0.00
MD11	0.00	0.01	0.00	0.00	0.00	0.02	1.13	0.15
P180	0.00	0.00	0.00	0.00	0.00	0.03	0.12	0.00
P28A	0.00	0.00	0.00	0.00	0.00	0.00	0.01	0.01
PA46	0.00	0.00	0.00	0.00	0.01	0.00	0.01	0.00
PC12	0.00	0.00	0.00	0.00	0.00	0.18	1.05	0.03
PC24	0.00	0.00	0.00	0.00	0.00	0.04	0.03	0.00
PRM1	0.00	0.00	0.00	0.00	0.00	0.01	0.14	0.00
S22T	0.00	0.00	0.00	0.00	0.00	0.02	0.01	0.00
SR20	0.00	0.00	0.00	0.00	0.00	0.00	0.01	0.00
SR22	0.00	0.00	0.00	0.00	0.00	0.00	0.01	0.00
SF50	0.00	0.00	0.00	0.00	0.00	0.01	0.02	0.00
LJ55	0.00	0.00	0.00	0.00	0.00	0.01	0.01	0.00
TBM7	0.00	0.00	0.00	0.00	0.00	0.00	0.00	0.01
MD83	0.00	0.00	0.00	0.00	0.00	0.00	0.01	0.00
A339	0.00	0.00	0.00	0.00	0.07	1.96	0.92	0.00

Departures (Average Daily Operations)								
Aircraft Type	06L	06R	07L	07R	24L	24R	25L	25R
FA8X	0.00	0.00	0.00	0.00	0.01	0.00	0.01	0.04
G150	0.00	0.00	0.00	0.00	0.00	0.00	0.02	0.09
G280	0.00	0.00	0.00	0.00	0.00	0.00	0.16	0.39
GA5C	0.00	0.00	0.00	0.00	0.01	0.00	0.08	0.17
GA6C	0.00	0.00	0.00	0.00	0.01	0.00	0.10	0.28
GALX	0.00	0.00	0.00	0.00	0.00	0.00	0.13	0.26
GL5T	0.00	0.00	0.00	0.00	0.00	0.01	0.14	0.35
GL7T	0.00	0.00	0.00	0.00	0.00	0.00	0.30	0.73
GLEX	0.00	0.00	0.00	0.00	0.00	0.01	0.57	1.25
GLF4	0.00	0.00	0.00	0.00	0.03	0.00	0.57	1.20
GLF5	0.00	0.00	0.00	0.00	0.02	0.01	0.80	1.38
GLF6	0.00	0.00	0.00	0.00	0.02	0.01	0.68	1.25
H25B	0.00	0.00	0.00	0.00	0.00	0.01	0.37	0.83
H25C	0.00	0.00	0.00	0.00	0.00	0.00	0.04	0.03
HA4T	0.00	0.00	0.00	0.00	0.00	0.00	0.01	0.01
HDJT	0.00	0.00	0.00	0.00	0.00	0.00	0.01	0.09
J328	0.00	0.00	0.00	0.00	0.00	0.00	0.01	0.00
LJ35	0.00	0.00	0.00	0.00	0.00	0.00	0.05	0.07
LJ40	0.00	0.00	0.00	0.00	0.00	0.00	0.01	0.01
LJ45	0.00	0.00	0.00	0.00	0.00	0.00	0.08	0.29
LJ60	0.00	0.00	0.00	0.00	0.00	0.00	0.14	0.27
LJ75	0.00	0.00	0.00	0.00	0.00	0.00	0.08	0.07
M600	0.00	0.00	0.00	0.00	0.01	0.00	0.00	0.00
MD11	0.00	0.00	0.00	0.00	0.00	0.00	0.76	0.58
P180	0.00	0.00	0.00	0.00	0.00	0.00	0.04	0.11
P28A	0.00	0.00	0.00	0.00	0.00	0.00	0.00	0.01
PA46	0.00	0.00	0.00	0.00	0.00	0.00	0.00	0.02
PC12	0.00	0.00	0.00	0.00	0.03	0.03	0.07	1.14
PC24	0.00	0.00	0.00	0.00	0.00	0.00	0.02	0.05
PRM1	0.00	0.00	0.00	0.00	0.00	0.00	0.00	0.15
S22T	0.00	0.00	0.00	0.00	0.02	0.00	0.01	0.00
SR20	0.00	0.00	0.00	0.00	0.00	0.00	0.00	0.01
SR22	0.00	0.00	0.00	0.00	0.00	0.00	0.01	0.00
SF50	0.00	0.00	0.00	0.00	0.00	0.00	0.00	0.03
LJ55	0.00	0.00	0.00	0.00	0.00	0.00	0.00	0.02
TBM7	0.00	0.00	0.00	0.00	0.00	0.00	0.01	0.00
MD83	0.00	0.00	0.00	0.00	0.00	0.00	0.00	0.01
A339	0.00	0.00	0.00	0.00	1.09	0.03	0.01	1.84
FA10	0.00	0.00	0.00	0.00	0.00	0.00	0.01	0.00
C340	0.00	0.00	0.00	0.00	0.00	0.00	0.01	0.04

LAX Noise Management

Source: LAX ANOMS, based on available FAA radar flight track data.

note: Aircraft Type for certain military operations may not be available through our data source, therefore will not be included in the report.

## LAX Average Daily Runway Use By Aircraft Type - 24 Hours Third Quarter 2024

<b>Arrivals</b> (Average Daily Operations)								
Aircraft Type	06L	06R	07L	07R	24L	24R	25L	25R
FA10	0.00	0.00	0.00	0.00	0.00	0.00	0.01	0.00
SF34	0.00	0.00	0.00	0.00	0.00	0.00	0.02	0.00
C340	0.00	0.00	0.00	0.00	0.00	0.00	0.05	0.00
BE33	0.00	0.00	0.00	0.00	0.00	0.00	0.01	0.00

<b>Departures</b> (Average Daily Operations)								
Aircraft Type	06L	06R	07L	07R	24L	24R	25L	25R
BE33	0.00	0.00	0.00	0.00	0.00	0.00	0.00	0.01
SW4	0.00	0.00	0.00	0.00	0.00	0.00	0.00	0.02

LAX Noise Management

Source: LAX ANOMS, based on available FAA radar flight track data.

note: Aircraft Type for certain military operations may not be available through our data source, therefore will not be included in the report.

## LAX Average Daily Runway Use By Aircraft Type - Night Time (10pm - 7am) Third Quarter 2024

Arrivals (Average Daily Operations)								
Aircraft Type	06L	06R	07L	07R	24L	24R	25L	25R
A20N	0.01	0.03	0.00	0.00	0.01	1.04	5.26	0.21
A21N	0.01	0.07	0.00	0.00	0.41	5.53	9.61	0.24
A306	0.00	0.00	0.00	0.00	0.00	0.00	0.01	0.00
A319	0.00	0.01	0.00	0.00	0.04	0.54	0.39	0.00
A320	0.00	0.01	0.00	0.00	0.03	2.04	6.78	0.08
A321	0.03	0.14	0.00	0.00	0.09	5.08	11.57	0.37
A332	0.00	0.01	0.00	0.00	0.12	1.75	0.92	0.10
A333	0.00	0.01	0.00	0.00	0.00	0.03	0.47	0.07
A359	0.00	0.01	0.00	0.00	0.00	0.63	0.82	0.12
A35K	0.00	0.00	0.00	0.00	0.00	0.05	0.02	0.00
B350	0.00	0.00	0.00	0.00	0.00	0.14	0.12	0.00
B38M	0.01	0.07	0.00	0.00	0.22	4.83	3.74	0.14
B39M	0.01	0.05	0.00	0.00	0.03	1.32	5.66	0.13
B737	0.01	0.08	0.00	0.00	0.15	4.20	1.21	0.04
B738	0.03	0.13	0.00	0.00	0.12	4.58	5.87	0.23
B739	0.02	0.07	0.00	0.00	0.04	2.76	4.32	0.05
B744	0.01	0.05	0.00	0.00	0.00	0.17	2.54	0.42
B748	0.00	0.02	0.00	0.00	0.07	0.20	1.22	0.00
B752	0.00	0.01	0.00	0.00	0.02	0.87	1.11	0.13
B753	0.00	0.01	0.00	0.00	0.02	0.36	1.09	0.03
B762	0.00	0.00	0.00	0.00	0.00	0.00	0.01	0.01
B763	0.02	0.14	0.00	0.00	0.02	0.88	5.82	1.88
B764	0.00	0.00	0.00	0.00	0.00	0.04	0.04	0.00
B772	0.01	0.04	0.00	0.00	0.00	0.41	1.13	0.16
B77L	0.00	0.07	0.00	0.00	0.00	0.25	4.33	0.73
B77W	0.00	0.01	0.00	0.00	0.02	1.13	0.73	0.12
B788	0.00	0.02	0.01	0.00	0.01	0.23	1.02	0.18
B789	0.00	0.02	0.00	0.00	0.01	0.63	2.00	0.16
B78X	0.00	0.00	0.00	0.00	0.00	0.00	0.01	0.00
BCS3	0.00	0.00	0.00	0.00	0.00	0.05	0.17	0.00
BE20	0.00	0.00	0.00	0.00	0.00	0.00	0.01	0.00
BE30	0.00	0.00	0.00	0.00	0.00	0.01	0.00	0.00
C172	0.00	0.00	0.00	0.00	0.00	0.01	0.00	0.00
C182	0.00	0.00	0.00	0.00	0.00	0.00	0.02	0.00
C25A	0.00	0.00	0.00	0.00	0.00	0.00	0.01	0.00
C25B	0.00	0.00	0.00	0.00	0.00	0.01	0.01	0.00
C525	0.00	0.00	0.00	0.00	0.00	0.00	0.02	0.00
C56X	0.00	0.00	0.00	0.00	0.00	0.01	0.03	0.00
C680	0.00	0.00	0.00	0.00	0.00	0.00	0.01	0.00
C68A	0.00	0.00	0.00	0.00	0.00	0.01	0.08	0.01

Departures (Average Daily Operations)								
Aircraft Type	06L	06R	07L	07R	24L	24R	25L	25R
A20N	0.00	0.00	0.00	0.00	0.91	0.08	0.08	7.29
A21N	0.00	0.00	0.00	0.00	3.01	0.29	0.28	13.93
A306	0.00	0.00	0.00	0.00	0.00	0.00	0.00	0.02
A319	0.00	0.00	0.00	0.00	0.11	0.01	0.00	0.96
A320	0.00	0.00	0.00	0.00	2.41	0.28	0.11	8.34
A321	0.00	0.00	0.00	0.00	5.38	0.29	0.18	15.86
A332	0.00	0.00	0.01	0.00	0.09	0.03	0.04	0.68
A333	0.00	0.00	0.00	0.00	0.01	0.00	0.04	0.53
A343	0.00	0.00	0.00	0.00	0.00	0.00	0.00	0.01
A359	0.00	0.00	0.00	0.00	0.95	0.00	0.09	4.43
A35K	0.00	0.00	0.00	0.00	0.14	0.05	0.00	0.13
A388	0.00	0.00	0.00	0.00	1.92	0.00	1.49	0.00
B350	0.00	0.00	0.00	0.00	0.07	0.01	0.01	0.52
B38M	0.00	0.00	0.00	0.00	3.22	0.59	0.02	5.93
B39M	0.00	0.00	0.00	0.00	1.53	0.08	0.13	6.78
B737	0.00	0.00	0.00	0.00	4.73	0.67	0.00	1.48
B738	0.00	0.00	0.00	0.00	3.55	0.50	0.13	8.82
B739	0.00	0.00	0.00	0.00	1.77	0.21	0.10	6.20
B744	0.00	0.00	0.00	0.00	0.00	0.00	0.23	3.08
B748	0.00	0.00	0.00	0.00	0.03	0.01	1.21	0.11
B752	0.00	0.00	0.00	0.00	1.54	0.21	0.03	0.83
B753	0.00	0.00	0.00	0.00	0.00	0.00	0.04	1.07
B763	0.00	0.00	0.00	0.00	1.97	0.11	0.37	8.78
B764	0.00	0.00	0.00	0.00	0.01	0.00	0.00	0.00
B772	0.00	0.00	0.00	0.00	0.00	0.01	0.03	2.51
B77L	0.00	0.00	0.00	0.00	0.00	0.00	0.30	4.24
B77W	0.00	0.00	0.00	0.00	0.64	0.00	0.32	8.15
B788	0.00	0.00	0.00	0.00	0.18	0.00	0.15	1.59
B789	0.00	0.00	0.00	0.00	0.74	0.00	0.00	3.61
B78X	0.00	0.00	0.00	0.00	0.00	0.00	0.00	0.02
BCS3	0.00	0.00	0.00	0.00	0.11	0.00	0.00	0.63
BE20	0.00	0.00	0.00	0.00	0.00	0.00	0.00	0.01
C172	0.00	0.00	0.00	0.00	0.00	0.00	0.00	0.01
C182	0.00	0.00	0.00	0.00	0.01	0.00	0.00	0.04
C25A	0.00	0.00	0.00	0.00	0.00	0.00	0.00	0.02
C25B	0.00	0.00	0.00	0.00	0.00	0.00	0.00	0.04
C525	0.00	0.00	0.00	0.00	0.00	0.00	0.00	0.01
C560	0.00	0.00	0.00	0.00	0.00	0.00	0.00	0.01
C56X	0.00	0.00	0.00	0.00	0.00	0.00	0.00	0.05
C680	0.00	0.00	0.00	0.00	0.00	0.00	0.00	0.01

LAX Noise Management

Source: LAX ANOMS, based on available FAA radar flight track data.

note: Aircraft Type for certain military operations may not be available through our data source, therefore will not be included in the report.

**LAX Average Daily Runway Use By Aircraft Type - Night Time (10pm - 7am)  
Third Quarter 2024**

Arrivals (Average Daily Operations)								
Aircraft Type	06L	06R	07L	07R	24L	24R	25L	25R
C700	0.00	0.00	0.00	0.00	0.00	0.01	0.09	0.00
C750	0.00	0.00	0.00	0.00	0.00	0.02	0.07	0.00
CL30	0.00	0.00	0.00	0.00	0.00	0.02	0.10	0.00
CL35	0.00	0.00	0.00	0.00	0.00	0.02	0.10	0.01
CL60	0.00	0.00	0.00	0.00	0.00	0.01	0.04	0.02
CRJ2	0.00	0.00	0.00	0.00	0.00	0.00	0.04	0.00
CRJ7	0.00	0.00	0.00	0.00	0.00	0.08	0.14	0.00
CRJ9	0.00	0.00	0.00	0.00	0.00	0.01	0.00	0.00
E135	0.00	0.00	0.00	0.00	0.00	0.00	0.08	0.00
E145	0.00	0.00	0.00	0.00	0.00	0.00	0.02	0.00
E170	0.00	0.00	0.00	0.00	0.00	0.07	0.15	0.01
E190	0.00	0.00	0.00	0.00	0.00	0.00	0.01	0.00
E35L	0.00	0.00	0.00	0.00	0.00	0.00	0.04	0.00
E545	0.00	0.00	0.00	0.00	0.00	0.02	0.00	0.00
E550	0.00	0.00	0.00	0.00	0.00	0.00	0.05	0.01
E55P	0.00	0.00	0.00	0.00	0.00	0.01	0.08	0.00
E75L	0.00	0.00	0.00	0.00	0.05	2.51	1.26	0.01
F2TH	0.00	0.00	0.00	0.00	0.00	0.01	0.01	0.00
F900	0.00	0.00	0.00	0.00	0.00	0.01	0.01	0.00
FA7X	0.00	0.00	0.00	0.00	0.00	0.00	0.07	0.00
G150	0.00	0.00	0.00	0.00	0.00	0.00	0.01	0.00
G280	0.00	0.00	0.00	0.00	0.00	0.00	0.02	0.00
GA5C	0.00	0.00	0.00	0.00	0.00	0.00	0.02	0.00
GA6C	0.00	0.00	0.00	0.00	0.00	0.00	0.04	0.00
GALX	0.00	0.00	0.00	0.00	0.00	0.00	0.07	0.00
GL5T	0.00	0.00	0.00	0.00	0.00	0.00	0.04	0.00
GL7T	0.00	0.00	0.00	0.00	0.00	0.00	0.07	0.01
GLEX	0.00	0.01	0.00	0.00	0.00	0.00	0.11	0.02
GLF4	0.00	0.00	0.00	0.00	0.00	0.01	0.16	0.04
GLF5	0.00	0.01	0.00	0.00	0.00	0.01	0.13	0.01
GLF6	0.00	0.00	0.00	0.00	0.00	0.01	0.12	0.01
H25B	0.00	0.00	0.00	0.00	0.00	0.01	0.16	0.01
LJ35	0.00	0.00	0.00	0.00	0.00	0.00	0.01	0.00
LJ45	0.00	0.00	0.00	0.00	0.00	0.00	0.02	0.00
LJ60	0.00	0.00	0.00	0.00	0.00	0.00	0.04	0.00
MD11	0.00	0.01	0.00	0.00	0.00	0.02	0.54	0.15
PC12	0.00	0.00	0.00	0.00	0.00	0.00	0.12	0.00
C25C	0.00	0.00	0.00	0.00	0.00	0.00	0.01	0.00
FA50	0.00	0.00	0.00	0.00	0.00	0.00	0.01	0.00
PRM1	0.00	0.00	0.00	0.00	0.00	0.00	0.02	0.00
E50P	0.00	0.00	0.00	0.00	0.00	0.00	0.01	0.00

Departures (Average Daily Operations)								
Aircraft Type	06L	06R	07L	07R	24L	24R	25L	25R
C68A	0.00	0.00	0.00	0.00	0.00	0.00	0.01	0.15
C700	0.00	0.00	0.00	0.00	0.00	0.00	0.00	0.08
C750	0.00	0.00	0.00	0.00	0.00	0.00	0.00	0.05
CL30	0.00	0.00	0.00	0.00	0.00	0.01	0.01	0.05
CL35	0.00	0.00	0.00	0.00	0.00	0.00	0.02	0.17
CL60	0.00	0.00	0.00	0.00	0.00	0.00	0.01	0.11
CRJ2	0.00	0.00	0.00	0.00	0.00	0.00	0.01	0.10
CRJ7	0.00	0.00	0.00	0.00	0.04	0.04	0.00	0.91
CRJ9	0.00	0.00	0.00	0.00	0.00	0.00	0.00	0.01
E135	0.00	0.00	0.00	0.00	0.00	0.00	0.00	0.07
E145	0.00	0.00	0.00	0.00	0.00	0.00	0.01	0.01
E170	0.00	0.00	0.00	0.00	0.03	0.00	0.00	0.54
E190	0.00	0.00	0.00	0.00	0.00	0.00	0.00	0.02
E35L	0.00	0.00	0.00	0.00	0.00	0.00	0.01	0.03
E545	0.00	0.00	0.00	0.00	0.00	0.00	0.00	0.08
E550	0.00	0.00	0.00	0.00	0.00	0.00	0.00	0.04
E55P	0.00	0.00	0.00	0.00	0.00	0.00	0.01	0.13
E75L	0.00	0.00	0.00	0.00	1.01	0.14	0.00	4.17
F2TH	0.00	0.00	0.00	0.00	0.00	0.00	0.00	0.05
F900	0.00	0.00	0.00	0.00	0.00	0.00	0.00	0.07
FA7X	0.00	0.00	0.00	0.00	0.00	0.00	0.00	0.05
G150	0.00	0.00	0.00	0.00	0.00	0.00	0.00	0.02
G280	0.00	0.00	0.00	0.00	0.00	0.00	0.00	0.08
GA6C	0.00	0.00	0.00	0.00	0.00	0.00	0.00	0.05
GALX	0.00	0.00	0.00	0.00	0.00	0.00	0.00	0.02
GL5T	0.00	0.00	0.00	0.00	0.00	0.00	0.00	0.05
GL7T	0.00	0.00	0.00	0.00	0.00	0.00	0.00	0.14
GLEX	0.00	0.00	0.00	0.00	0.00	0.00	0.01	0.25
GLF4	0.00	0.00	0.00	0.00	0.00	0.00	0.00	0.16
GLF5	0.00	0.00	0.00	0.00	0.00	0.00	0.02	0.27
GLF6	0.00	0.00	0.00	0.00	0.00	0.00	0.00	0.23
H25B	0.00	0.00	0.00	0.00	0.00	0.00	0.00	0.09
LJ35	0.00	0.00	0.00	0.00	0.00	0.00	0.00	0.02
LJ45	0.00	0.00	0.00	0.00	0.00	0.00	0.00	0.04
LJ60	0.00	0.00	0.00	0.00	0.00	0.00	0.00	0.02
LJ75	0.00	0.00	0.00	0.00	0.00	0.00	0.01	0.00
MD11	0.00	0.00	0.00	0.00	0.00	0.00	0.01	0.14
PC12	0.00	0.00	0.00	0.00	0.00	0.00	0.00	0.05
PRM1	0.00	0.00	0.00	0.00	0.00	0.00	0.00	0.03
E50P	0.00	0.00	0.00	0.00	0.00	0.00	0.00	0.01
C650	0.00	0.00	0.00	0.00	0.00	0.00	0.00	0.02

LAX Noise Management

Source: LAX ANOMS, based on available FAA radar flight track data.

note: Aircraft Type for certain military operations may not be available through our data source, therefore will not be included in the report.

**LAX Average Daily Runway Use By Aircraft Type - Night Time (10pm - 7am)  
Third Quarter 2024**

<b>Arrivals</b> (Average Daily Operations)								
Aircraft Type	06L	06R	07L	07R	24L	24R	25L	25R
C650	0.00	0.00	0.00	0.00	0.00	0.00	0.02	0.00
MD83	0.00	0.00	0.00	0.00	0.00	0.00	0.01	0.00
HDJT	0.00	0.00	0.00	0.00	0.00	0.00	0.01	0.00

<b>Departures</b> (Average Daily Operations)								
Aircraft Type	06L	06R	07L	07R	24L	24R	25L	25R
H25C	0.00	0.00	0.00	0.00	0.00	0.00	0.00	0.01
MD83	0.00	0.00	0.00	0.00	0.00	0.00	0.00	0.01
HDJT	0.00	0.00	0.00	0.00	0.00	0.00	0.00	0.01
C550	0.00	0.00	0.00	0.00	0.00	0.00	0.00	0.01
A339	0.00	0.00	0.00	0.00	0.00	0.00	0.00	0.01

**LAX Average Daily Runway Use By Aircraft Group - 24 Hours  
Third Quarter 2024**

<b>Arrivals</b> (Average Daily Operations)								
Aircraft Group	06L	06R	07L	07R	24L	24R	25L	25R
Small Jet	0.00	0.02	0.00	0.00	2.47	77.02	62.71	0.62
Small Narrow-Body Jet	0.10	0.45	0.00	0.00	4.48	148.75	181.92	2.28
Large Narrow-Body Jet	0.04	0.23	0.00	0.00	1.51	48.21	117.24	1.40
Small Wide-Body Jet	0.02	0.14	0.00	0.00	0.14	5.18	19.64	1.90
Large Wide-Body Jet	0.02	0.28	0.01	0.00	1.74	59.99	68.20	2.45
Non-Jet	0.00	0.00	0.00	0.00	0.05	1.66	2.51	0.08
Military*	0.00	0.00	0.00	0.00	0.00	0.00	0.00	0.00

<b>Departures</b> (Average Daily Operations)								
Aircraft Group	06L	06R	07L	07R	24L	24R	25L	25R
Small Jet	0.00	0.00	0.00	0.00	41.48	8.70	10.90	81.73
Small Narrow-Body Jet	0.00	0.00	0.00	0.00	131.18	19.41	1.09	186.41
Large Narrow-Body Jet	0.00	0.00	0.00	0.00	42.59	5.58	0.84	119.63
Small Wide-Body Jet	0.00	0.00	0.00	0.00	7.12	0.84	3.91	15.35
Large Wide-Body Jet	0.00	0.00	0.01	0.00	30.57	1.93	15.61	85.05
Non-Jet	0.00	0.00	0.00	0.00	0.38	0.13	0.45	3.30
Military*	0.00	0.00	0.00	0.00	0.00	0.00	0.00	0.00

LAX Noise Management

Source: LAX ANOMS, based on available FAA radar flight track data.

\* Aircraft Type for certain military operations may not be available through our data source, therefore will not be included in the report.



**LAX Average Daily Runway Use By Aircraft Group - Night Time (10pm - 7am)  
Third Quarter 2024**

<b>Arrivals</b> (Average Daily Operations)								
<b>Aircraft Group</b>	<b>06L</b>	<b>06R</b>	<b>07L</b>	<b>07R</b>	<b>24L</b>	<b>24R</b>	<b>25L</b>	<b>25R</b>
Small Jet	0.00	0.02	0.00	0.00	0.05	2.88	3.64	0.18
Small Narrow-Body Jet	0.10	0.45	0.00	0.00	0.65	21.53	33.82	0.89
Large Narrow-Body Jet	0.04	0.23	0.00	0.00	0.54	11.84	23.37	0.77
Small Wide-Body Jet	0.02	0.14	0.00	0.00	0.02	0.92	5.88	1.89
Large Wide-Body Jet	0.02	0.28	0.01	0.00	0.23	5.52	15.75	2.22
Non-Jet	0.00	0.00	0.00	0.00	0.00	0.16	0.33	0.02
Military*	0.00	0.00	0.00	0.00	0.00	0.00	0.00	0.00

<b>Departures</b> (Average Daily Operations)								
<b>Aircraft Group</b>	<b>06L</b>	<b>06R</b>	<b>07L</b>	<b>07R</b>	<b>24L</b>	<b>24R</b>	<b>25L</b>	<b>25R</b>
Small Jet	0.00	0.00	0.00	0.00	1.09	0.20	0.14	8.60
Small Narrow-Body Jet	0.00	0.00	0.00	0.00	18.35	2.41	0.57	46.96
Large Narrow-Body Jet	0.00	0.00	0.00	0.00	9.93	0.79	0.54	31.68
Small Wide-Body Jet	0.00	0.00	0.00	0.00	1.98	0.11	0.37	8.80
Large Wide-Body Jet	0.00	0.00	0.01	0.00	4.71	0.11	3.91	29.25
Non-Jet	0.00	0.00	0.00	0.00	0.09	0.01	0.01	0.74
Military*	0.00	0.00	0.00	0.00	0.00	0.00	0.00	0.00

LAX Noise Management

Source: LAX ANOMS, based on available FAA radar flight track data.

\* Aircraft Type for certain military operations may not be available through our data source, therefore will not be included in the report.

## **Summary of Actions Taken by LAWA to Comply with Conditions to the Current Noise Variance for Los Angeles International Airport**

Third Quarter 2024

The Los Angeles World Airports (LAWA) continuously works to operate an airport that maintains the highest possible environmental quality of life for surrounding communities. To that end, LAWA continues to take the following actions:

- LAWA continues to implement its Aircraft Noise Mitigation Program (ANMP), designed to fund the mitigation of all incompatible land uses within the noise impact boundary as defined in the State Noise Standards. LAWA updates the ANMP report periodically to ensure that it reasonably represents the mitigation and funding programs that are in place.
- With each second quarter Quarterly Report, LAWA submits an annual update of the ANMP. This update includes the number of dwellings acoustically insulated, the cost of the program, the anticipated funding availability, and the anticipated completion date of the project.
- LAWA continues to monitor and enforce, as appropriate, all of its informal noise abatement procedures in place at LAX, including but not limited to the early turn program, preferential runway use procedures and over ocean operations procedures, as well as the formal maintenance run-up restrictions.
- LAWA continues to work with the Federal Aviation Administration and pilots to improve compliance with its “no turns before the shoreline” policy.
- LAWA updated the 2014 Report on Implementation of the Preferential Runway Use Policy at LAX to reevaluate conditions related to compliance, implementation, and possible improvements, and submitted it to Caltrans and Los Angeles County on June 29, 2023.
- LAWA continues to provide the information to the County of Los Angeles needed to prepare Quarterly Reports of Noise Monitoring. Included with the noise monitoring information forwarded each quarter is this brief report regarding the implementation of each of the conditions to the Variance.

- LAWA completed an upgrade of the Noise and Operations Monitoring System for LAX in 2022. LAWA received Caltrans certification of the upgraded airport noise and operations monitoring system in October 2022 and provided the County of Los Angeles with a copy of all submitted documentation and Caltrans certification at that time. The County continues to review and audit the data LAWA submits in each Quarterly Report.
- LAWA continues to include tabular data and graphical illustrations with each Quarterly Report describing and comparing the level and type of usage for each runway at LAX during the quarter. In addition, LAWA is including tabular data describing the daily average number of arrivals and departures by aircraft type and model on each runway during all hours and during nighttime hours from 10 pm to 7 am. LAWA is also now providing the runway usage data to the FAA for their use in monitoring air traffic runway usage.
- LAWA continues to monitor and enforce its maintenance run-up curfew (2300-0600). When applicable, LAWA will include with each Quarterly Report, information regarding monitoring and enforcement activities undertaken during the quarter. There were no enforcement actions reported during the third quarter 2024.
- LAWA continues to provide the LAX Noise Comment Phone Line with an option for callers to have a live answer as available, and continues to retrieve any complaint messages and provide appropriate responses in a timely manner.