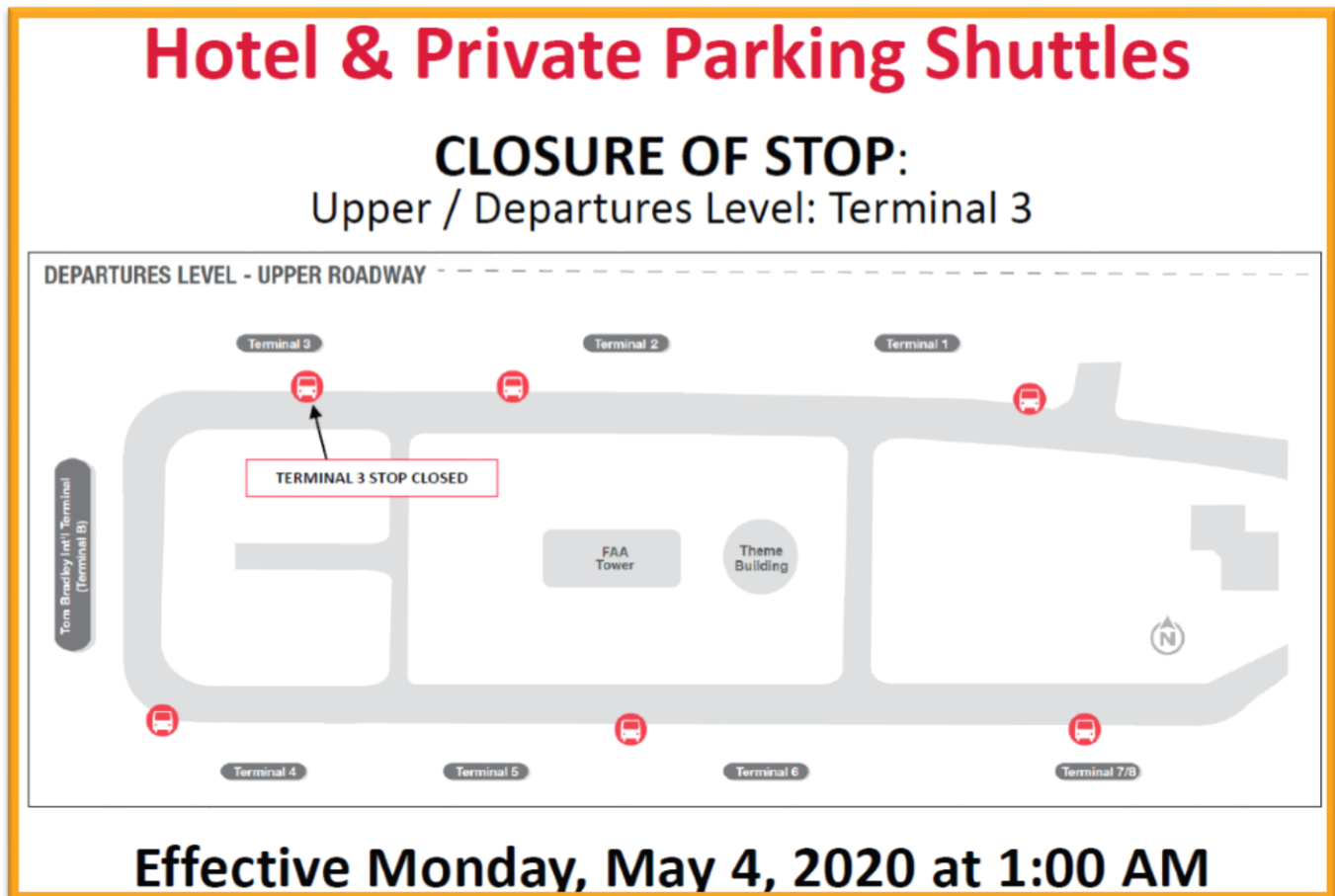


Construction Hot Topics

Week of April 27, 2020

1. Hotel / Private Parking Stop Closed: Terminal 3

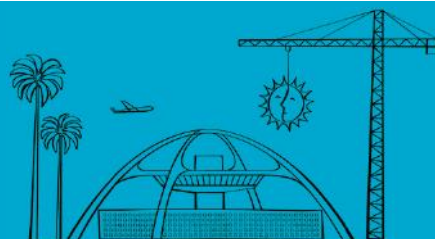
- The Hotel / Private Parking Shuttle Stop on the Departures Level, Terminal 3 is closed until further notice
- Signage is in place directing guests to the next available stop



Terminal 3 Hotel / Private Parking Shuttle Stop Closed

Change is in the Air(port).

LAX WAY BETTER. REALLY.

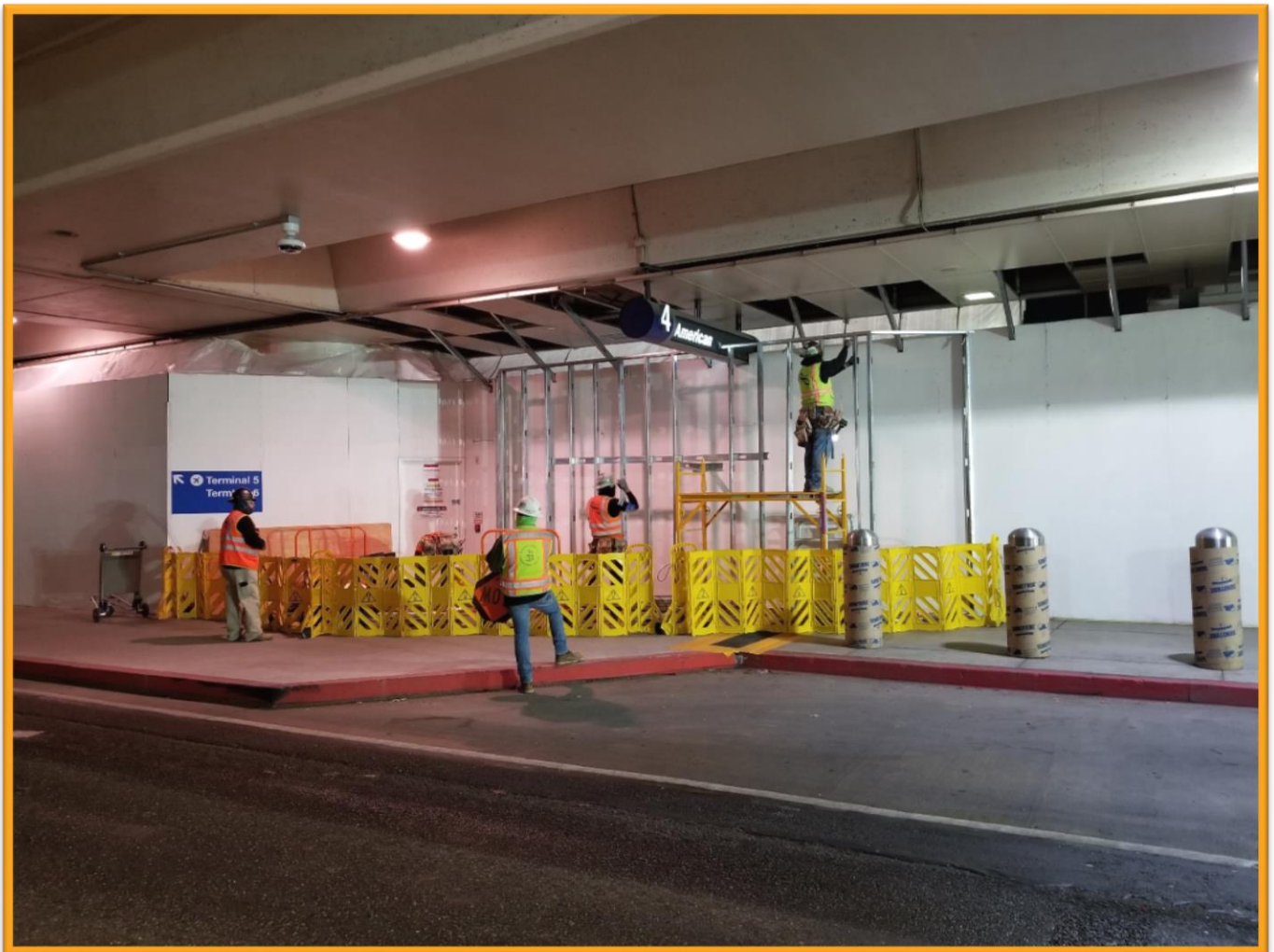


Construction Hot Topics

Week of April 27, 2020

2. Barricade Construction: Terminal 4 / 5

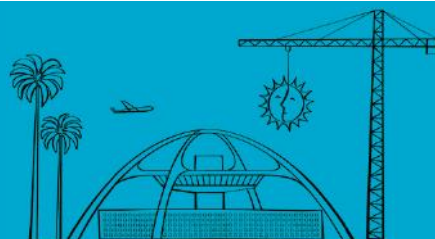
- To facilitate work for the Terminal 4.5 APM Core Project, work to expand current curbside barricades on the Arrivals Level between Terminals 4 and 5 is occurring nightly this week
- Barricades are scheduled to be complete this week with finishes



Barricade work continues at Terminal 4.5 (Arrivals Level, Curbside)

Change is in the Air(port).

LAX WAY BETTER. REALLY.

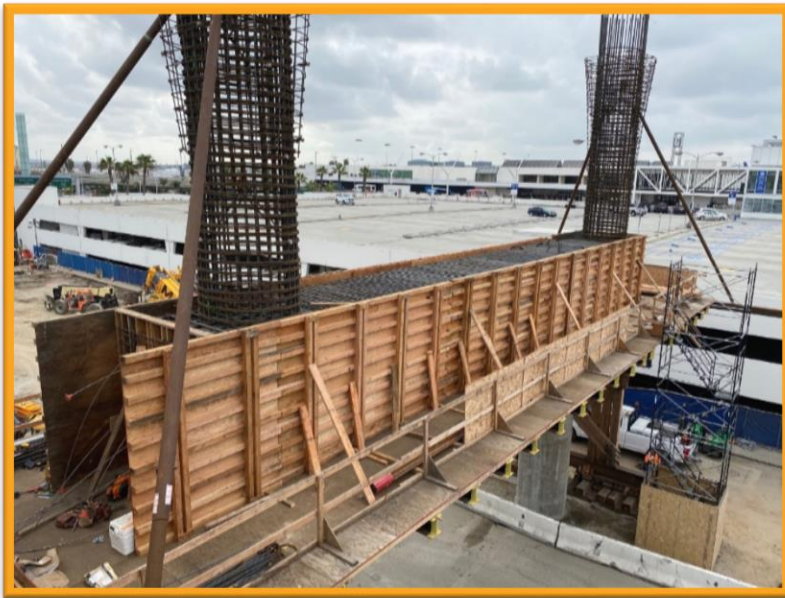


Construction Hot Topics

Week of April 27, 2020

3. Automated People Mover (APM) Construction Update

- The APM Project reached a milestone this week: Concrete was poured and forms were stripped, exposing the first bent cap that will support the East Station for the Automated People Mover
- Pictured below is a photo from two weeks ago when formwork was started, and a photo from now showing the concrete



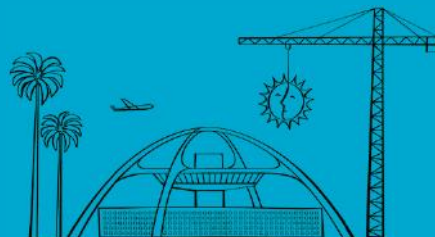
APM East Station formwork between Parking Structures 1 and 7 on Monday, April 20

The same work area with concrete now poured as of Monday, May 4



Change is in the Air(port).

LAX WAY BETTER. REALLY.



Construction Hot Topics

Week of April 27, 2020

4. Cranes in the Central Terminal Area

- The landscape of the Central Terminal Area is changing rapidly – as seen from the roof of Tom Bradley International Terminal (Terminal B – north end) there are numerous cranes performing work on multiple projects all at once
- Some cranes – such as the tower crane airside between Terminals 1 and 2 – is scheduled to come down later this month, while others – such as the tower crane airside between Terminals 4 and 5 – was completed just last week and is scheduled to be up through late next year

Terminal 1.5 Tower Crane



Terminal 4.5 Tower Crane

Change is in the Air(port).

LAX WAY BETTER. REALLY.

