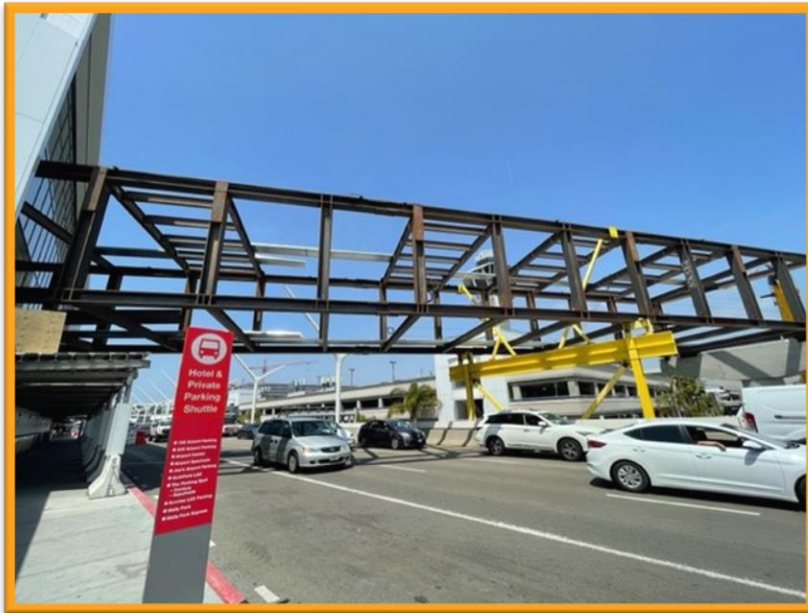


Construction Hot Topics

Week of May 2, 2022

1. Construction Update: Automated People Mover Pedestrian Bridges

- The fifth of six total APM pedestrian bridges, which will connect our terminals to future APM stations in the CTA, was successfully placed over the roadways between Terminals 5 and 6
- The final CTA pedestrian bridges will be installed at Tom Bradley International Terminal later this year, connecting to the West CTA Station being built between Parking Structures 3 and 4
- The first pedestrian bridge to be installed, which was in June 2021 between Terminals 4 and 5, is undergoing glass panel installation; the bridge is taking shape and looks more like the final product with each passing week



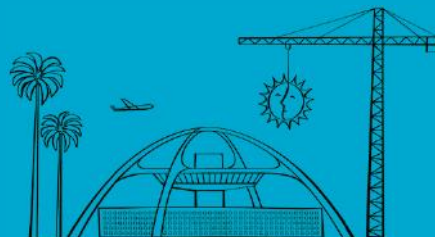
The latest APM pedestrian bridge structure has been successfully placed between Terminals 5 and 6

Glass panel installation is ongoing on the pedestrian bridge structure between Terminals 4 and 5



Change is in the Air(port).

LAX WAY BETTER. REALLY.



Construction Hot Topics

Week of May 2, 2022

2. Construction Update: Consolidated Rent-A-Car Facility (ConRAC)

- As part of the Landside Access Modernization Program (LAMP) construction continues on the Consolidated Rent-A-Car facility
- Recent milestones include the completion of structural concrete, the Ready Return / Idle Storage building north and south ramps, and the Quick Turn Around building ramps and bridges that connect it to the Ready Return / Idle Storage building
- As civil and roadway work continues around the ConRAC, some lanes may be restricted along Arbor Vitae Street and Century Boulevard
- Once open, the roughly 6.3-million-square-foot ConRAC facility will be the largest rental car operation in the world



An aerial view of the LAX ConRAC Facility with Arbor Vitae St to the north, Century Blvd to the east, and the Automated People Mover guideway at the facility's west side

Change is in the Air(port).

LAX WAY BETTER. REALLY.

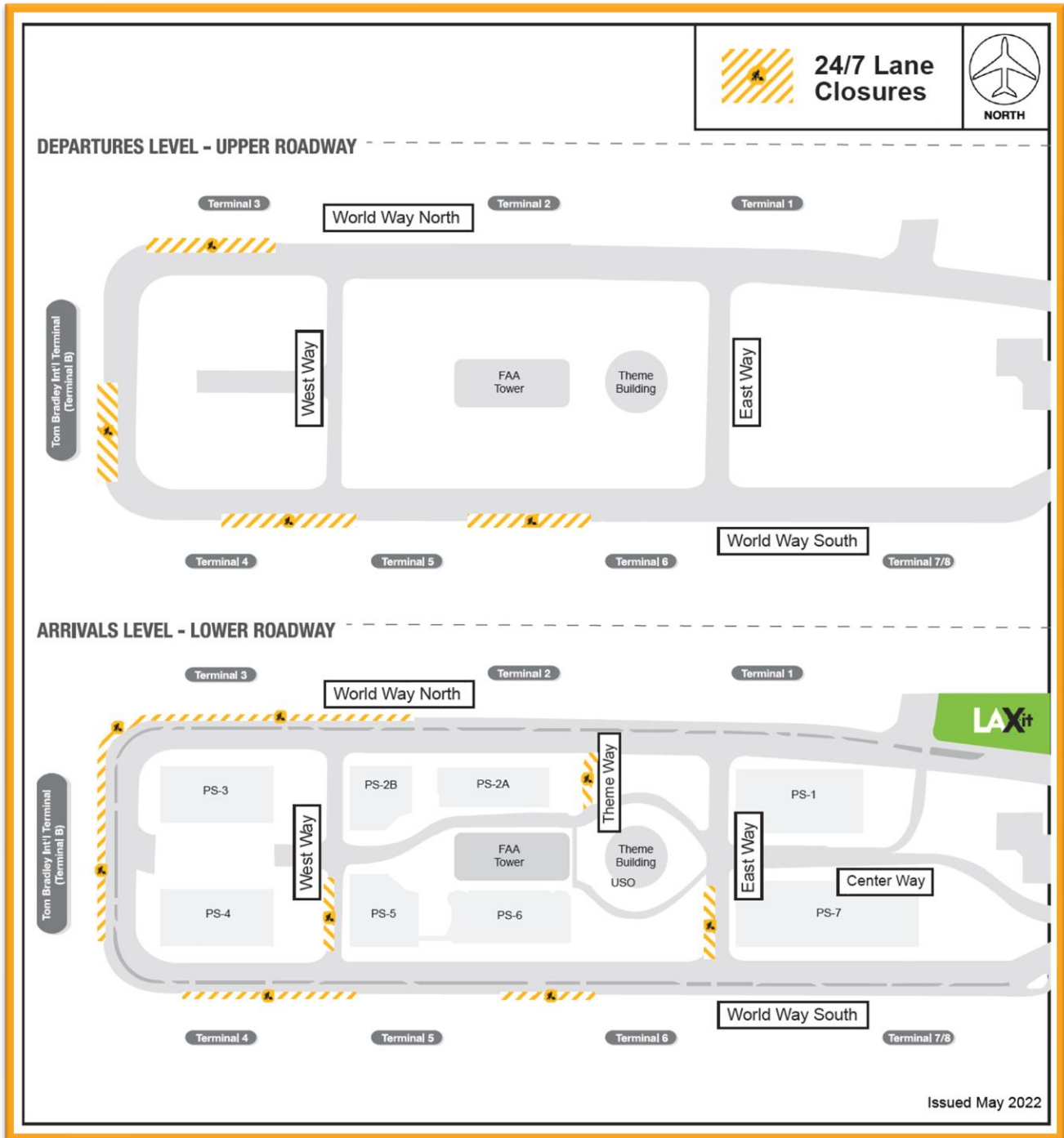


Construction Hot Topics

Week of May 2, 2022

3. May 2022: 24/7 CTA Lane Restrictions

- Scheduled 24/7 lane restrictions for Departures / Upper & Arrivals / Lower Level roadways are illustrated on the map below for the month of May 2022
- Traffic will be maintained at all times; please plan ahead for potential delays



Change is in the Air(port).

LAX WAY BETTER. REALLY.

