

# Construction Hot Topics

Week of September 6, 2022

## 1. Terminal 4.5: Removal of Curbside Barricades & Temporary Sidewalks

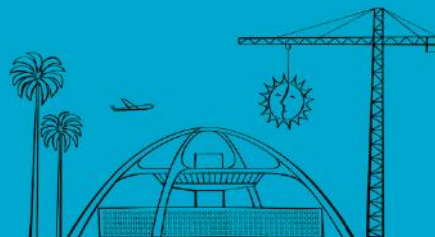
- The curbside barricades and temporary pedestrian sidewalks in place on both the Arrivals and Departures Levels between Terminals 4 and 5 are scheduled to be removed over the coming weeks
- The barricades on both levels will be demolished nightly between September 7 and September 9; the temporary sidewalks in place over the drop-off and pick-up lanes will be demolished nightly between September 12 and September 15
- The barricades and temporary sidewalks have been in place since 2020 to facilitate construction by the Terminal 4.5 Vertical Core & APM Interface Project



*Departures Level Terminal 4.5: Curbside construction barricades and temporary pedestrian sidewalk (with protective canopy) to be removed starting this week; similar work will occur on the Arrivals Level*

Change is in the Air(port).

**LAX** WAY BETTER. REALLY.

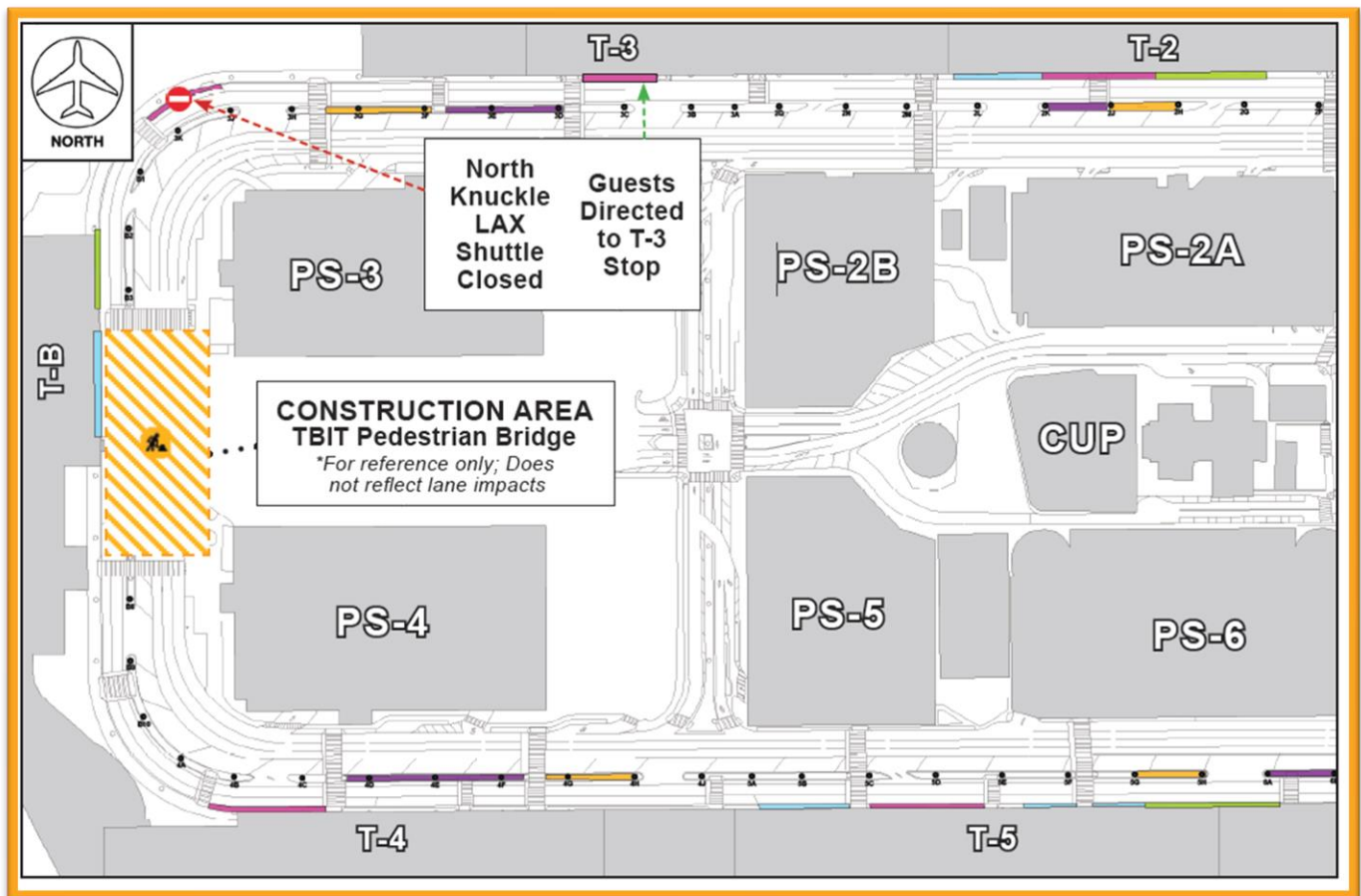


# Construction Hot Topics

Week of September 6, 2022

## 2. Terminal B: APM Pedestrian Bridge Construction

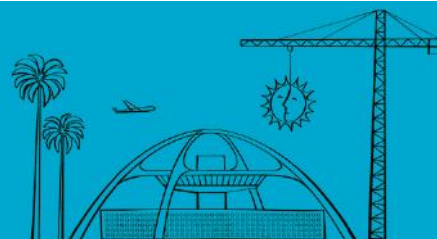
- The Automated People Mover project will construct a Pedestrian Bridge over the roadways at Terminal B to connect the terminal to the West CTA Station
- Construction will require various nightly lane restrictions and / or full closures on World Way at Terminal B beginning Monday, September 12 through Saturday, October 15, 2022
- All impacts will occur during limited overnight hours between 10PM and 7AM with roadway lanes restored during the day
- For the duration of this project, the LAX Shuttle Stop at the North Knuckle will be closed 24/7; Guests will be directed to the next available stop at Terminal 3
- Watch Construction Hot Topics next week for additional information about this project and the anticipated impacts



The map above highlights the general construction area of impact for the APM's Terminal B Pedestrian Bridge, as well as the 24/7 closure of the North Knuckle LAX Shuttle Stop (pink shuttle)

Change is in the Air(port).

**LAX** WAY BETTER. REALLY.

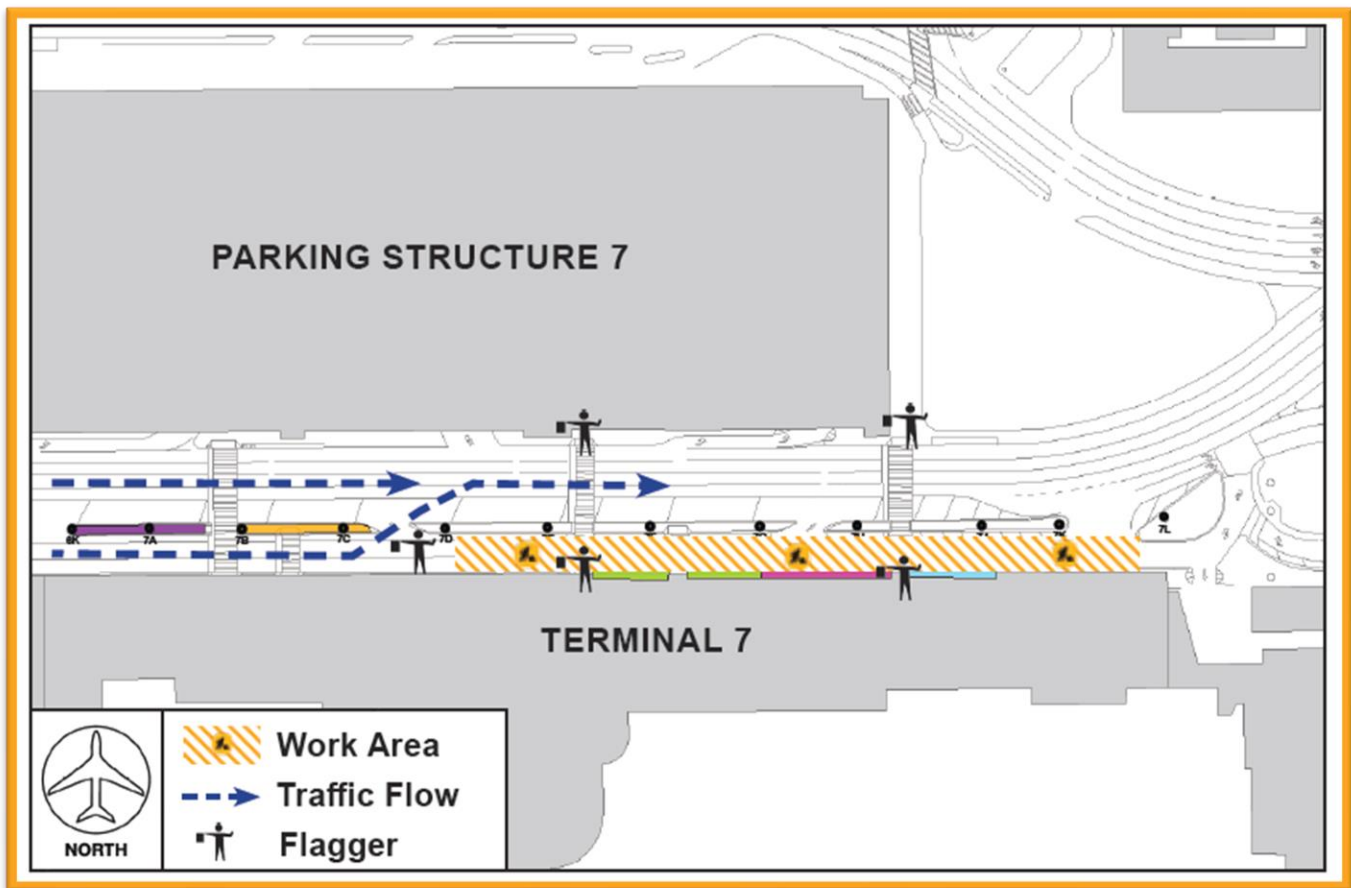
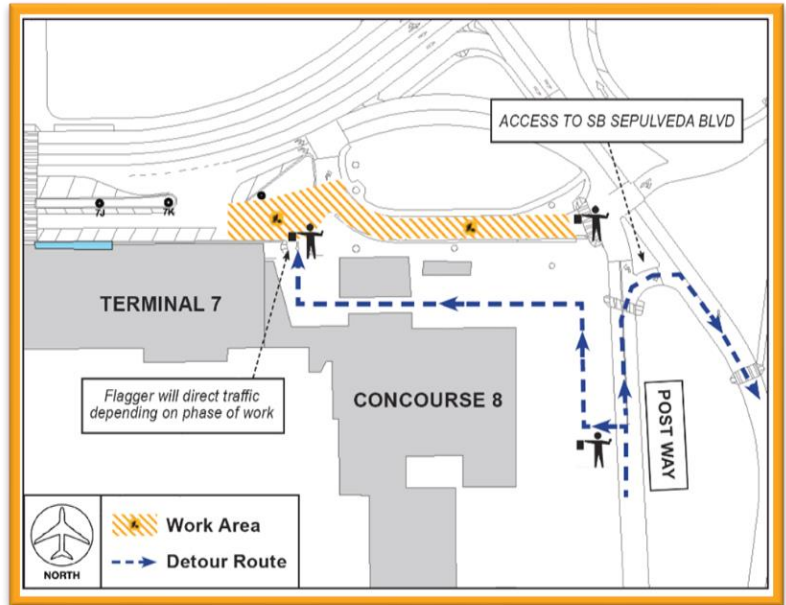


# Construction Hot Topics

Week of September 6, 2022

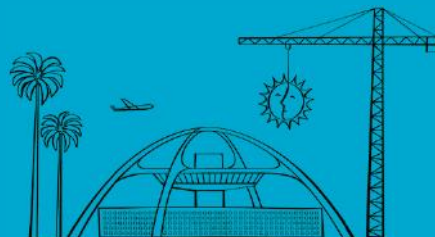
## 3. Arrivals Level Inner Lanes: Restrictions for LAMP Utility Work

- To facilitate work for the Landside Access Modernization Program, the Service Road north of Concourse 8 is restricted nightly between 1AM and 7AM; this work is scheduled to be complete by this Friday, September 9, 2022 (pictured right)
- This is part of a larger phased project with the next phase of impacts scheduled to start next week in the Terminal 7 Inner Lanes (pictured below)
- Watch Construction Hot Topics for more information on this project



Change is in the Air(port).

**LAX** WAY BETTER. REALLY.



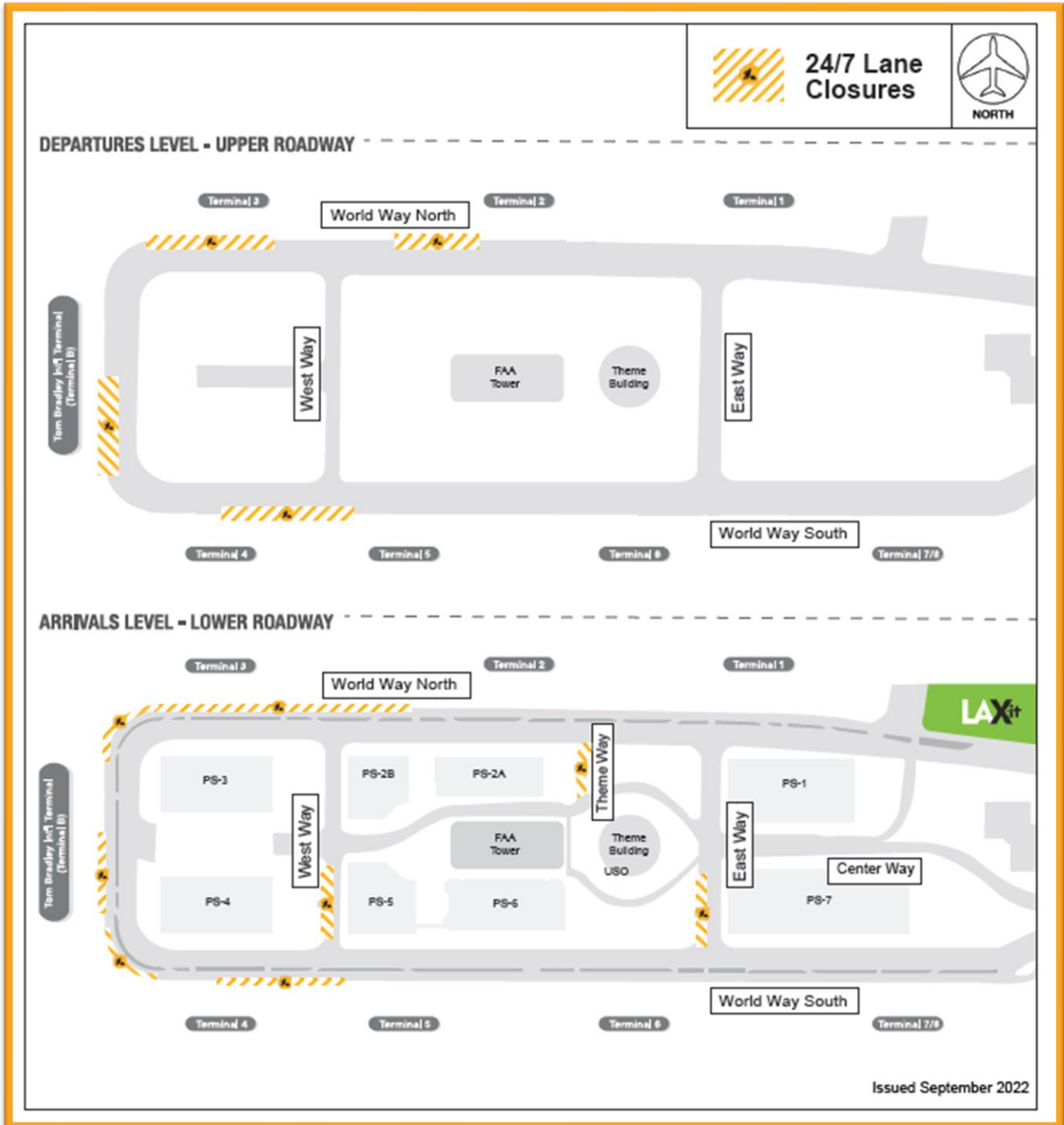


# Construction Hot Topics

Week of September 6, 2022

## 4. September 2022: 24/7 CTA Lane Restrictions

- Scheduled 24/7 lane restrictions for Departures / Upper & Arrivals / Lower Level roadways are illustrated on the map below for the month of September 2022
- Traffic will be maintained at all times; please plan ahead



Change is in the Air(port).

**LAX** WAY BETTER. REALLY.

