

Construction Hot Topics

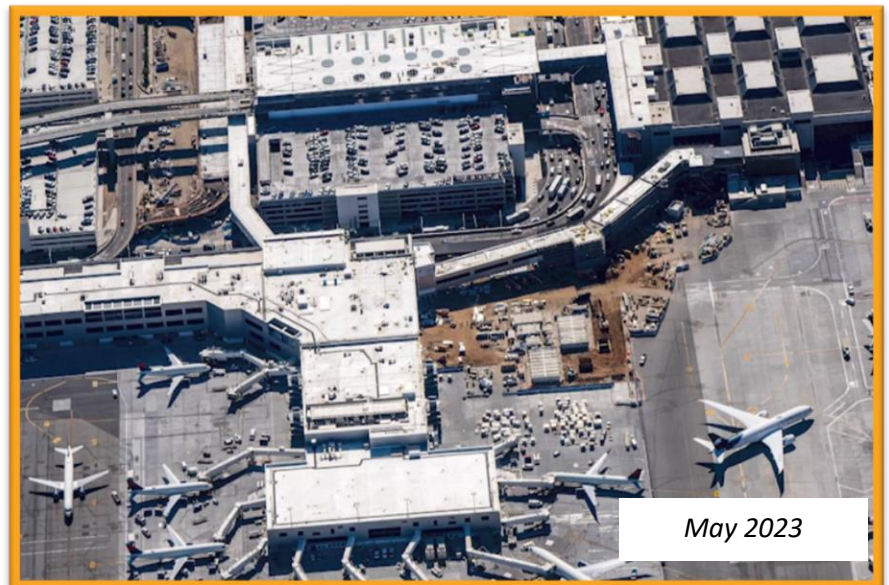
Week of May 8, 2023

1. Terminal 2 / 3: Project Update

- Construction continues on the Delta Sky Way Program to modernize Terminals 2 and 3
- Part of this modernization includes a secure connection between Terminal 3 and Tom Bradley International Terminal, pictured below, which will allow passengers to go between terminals without having to be screened again by TSA; Once complete, passengers will be able to walk from Terminal 1 to Terminal 8 behind security
- Additionally, a portion of Departures and Arrivals Level lanes and sidewalks are closed to facilitate construction in front of Terminals 2 and 3; guests should watch for posted wayfinding and detour signage to safely navigate around closed areas

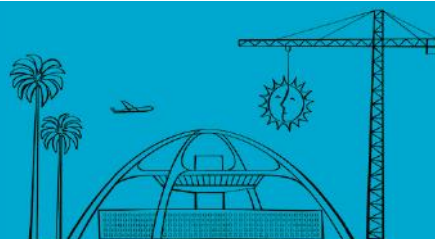


Approximately four months of progress can be seen between aerials of the Delta Sky Way Project taken January and May, 2023



Change is in the Air(port).

LAX WAY BETTER. REALLY.

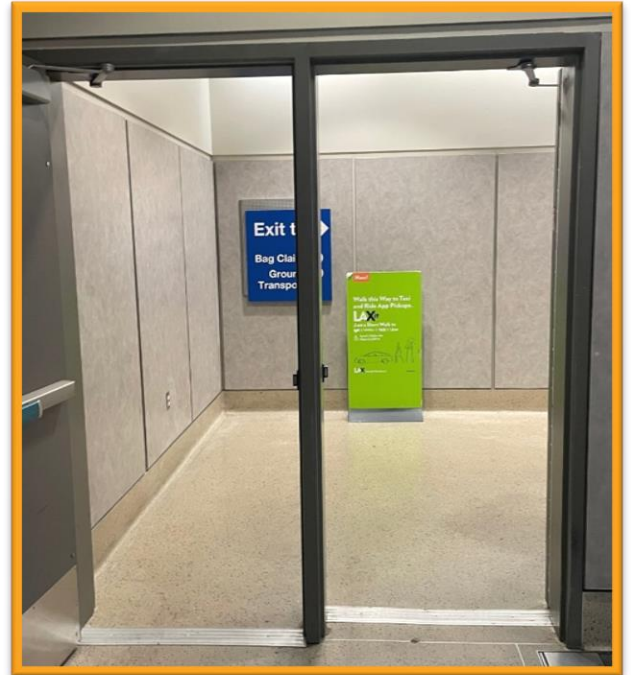


Construction Hot Topics

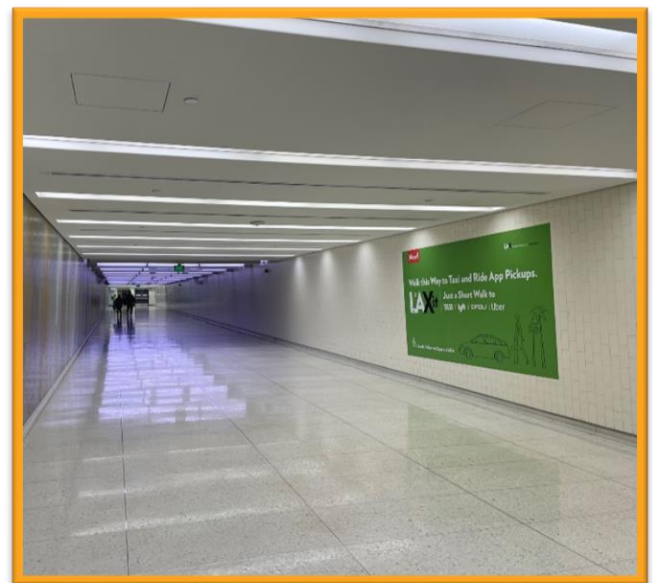
Week of May 8, 2023

2. In-Terminal Graphics: Removal of LAX-it Signage

- Signage that was installed in Fall 2019 announcing the then-new LAX-it Ride-App system will be removed from inside terminals to free up space for future messaging around the Landside Access Modernization Program, including information about the Consolidated Rent-A-Car Facility and Automated People Mover Train operations
- Wayfinding and other informational graphics for LAX-it will remain in place; only old / outdated graphics announcing LAX-it will be removed
- Watch Construction Hot Topics for more information about future in-terminal graphics

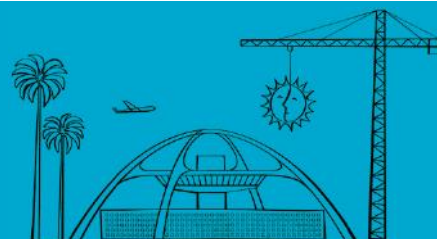


Old LAX-it signage will be removed from the terminals; wayfinding for the lot (and all other ground transportation) will remain



Change is in the Air(port).

LAX WAY BETTER. REALLY.

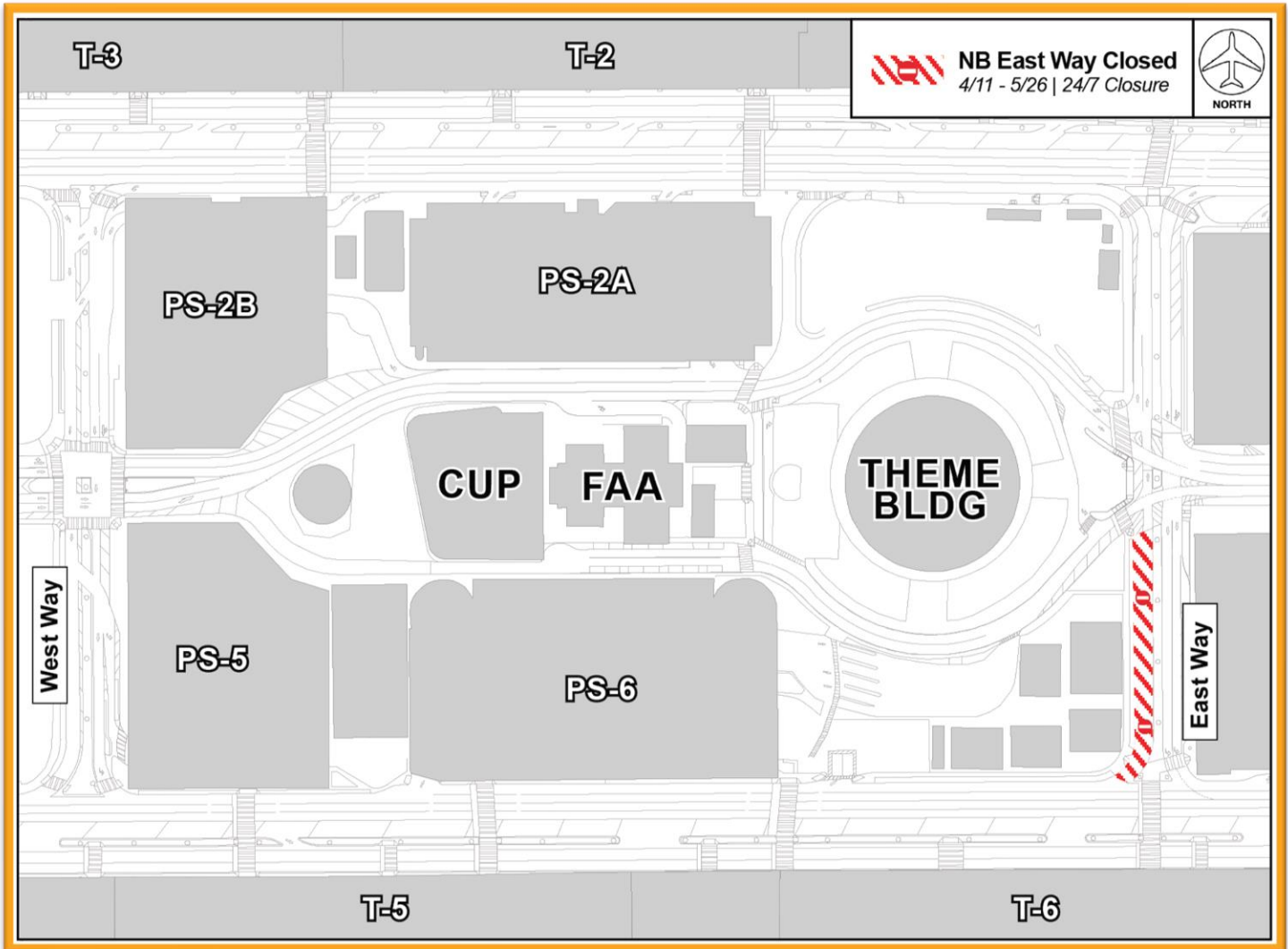


Construction Hot Topics

Week of May 8, 2023

3. REMINDER: Northbound East Way Closed

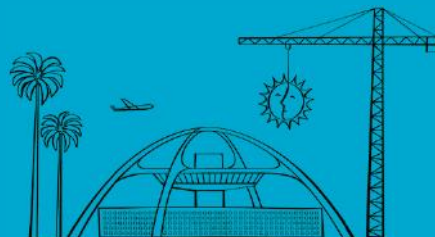
- As a reminder, northbound East Way remains closed 24/7 through Friday, May 26 to facilitate work for the Landside Access Modernization Program
- Vehicular and pedestrian detours are in place, along with flaggers to facilitate the safe flow of traffic
- Please watch for posted signage and use caution when travelling near construction areas



Northbound East Way (Arrivals Level CTA) is closed 24/7 through May 26

Change is in the Air(port).

LAX WAY BETTER. REALLY.

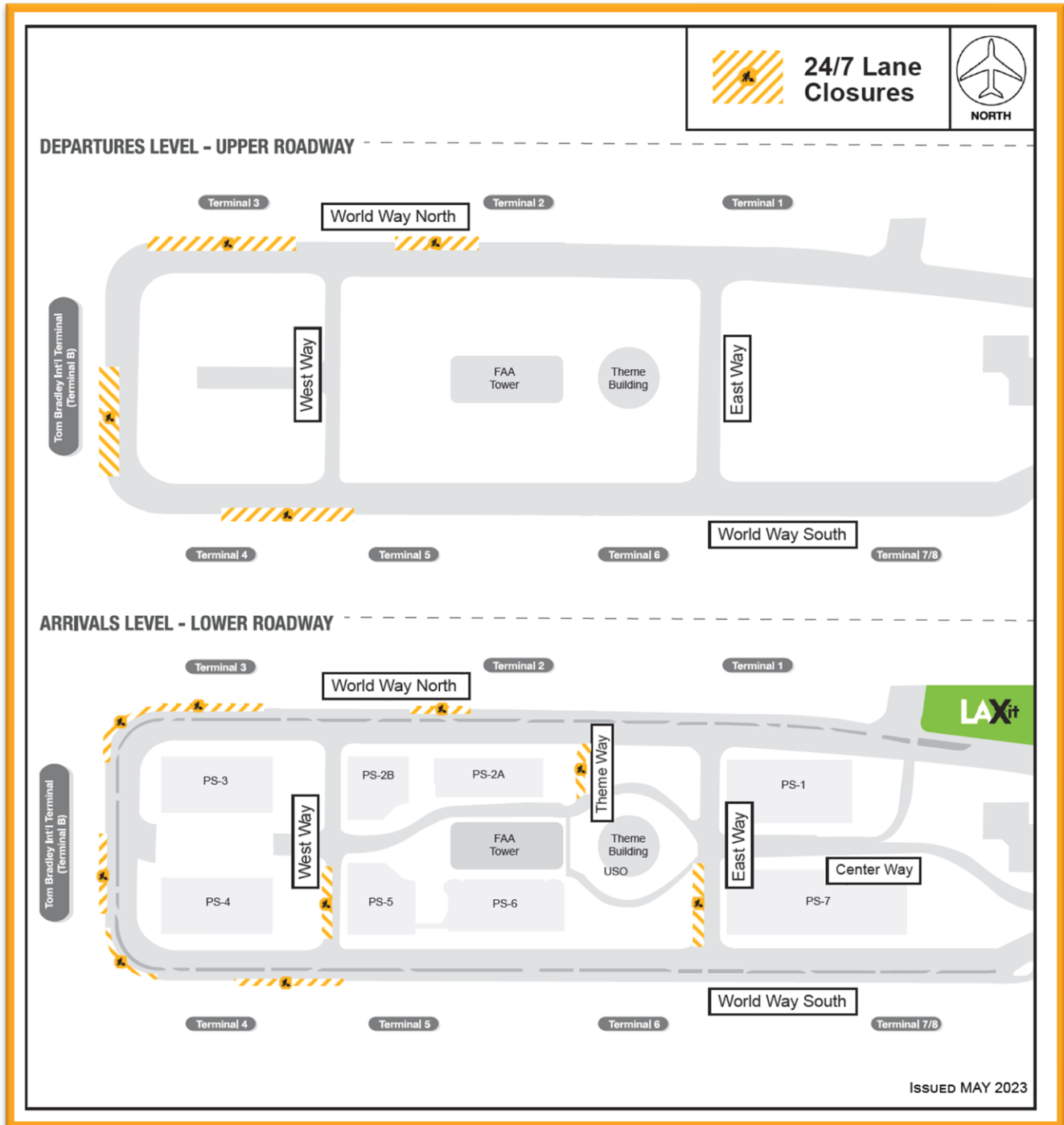


Construction Hot Topics

Week of May 8, 2023

4. May 2023: 24/7 CTA Lane Restrictions

- Scheduled 24/7 lane restrictions for Departures / Upper Level and Arrivals / Lower Level roadways are illustrated on the map below for the month of May 2023
- Traffic will be maintained at all times; please plan ahead for potential delays



Change is in the Air(port).

LAX WAY BETTER. REALLY.

