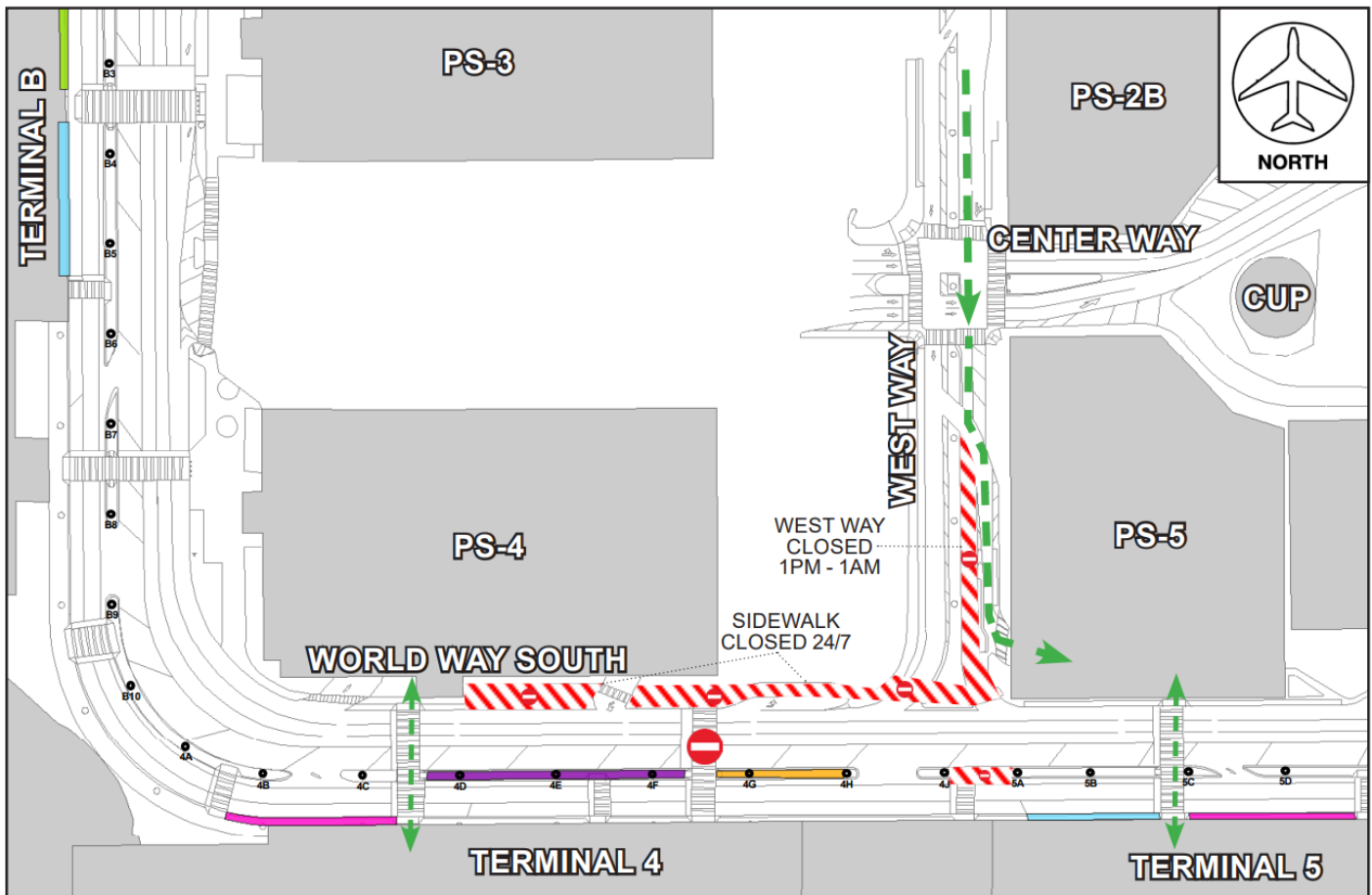


CONSTRUCTION HOT TOPICS

#1

NEW CONFIGURATION: WEST WAY & WORLD WAY SOUTH (ARRIVALS)

TO FACILITATE CIVIL CONSTRUCTION FOR THE AUTOMATED PEOPLE MOVER PROJECT, MODIFIED LANE AND CROSSWALK RESTRICTIONS REMAIN IN PLACE AT WEST WAY AND WORLD WAY SOUTH (ARRIVALS LEVEL) THROUGH FRIDAY, MARCH 29



PLEASE NOTE:

Changes to the previous construction configuration include all lanes restored on World Way South, and a portion of West Way (previously closed 24/7) is now open for 12 hours a day from 1AM to 1PM (closed 1PM to 1AM); when West Way is closed, vehicles are detoured to Center Way.

LAX

☎ LAX Construction Hotline: 310-649-5292 ✉ LAXConstructionHotline@LAWA.org

flyLAX.com 🐦 @flyLAXairport 📘 LAInternationalAirport

CONSTRUCTION HOT TOPICS

#3 EASTBOUND LANE CLOSURE ON ARBOR VITAE STREET

TO FACILITATE WORK FOR THE CONRAC FACILITY, A SINGLE EASTBOUND LANE ON ARBOR VITAE ST BETWEEN MAINTENANCE DR AND AVIATION BLVD WILL BE CLOSED THROUGH SUNDAY, MARCH 31, DAILY (MONDAY TO FRIDAY) FROM 6AM TO 3PM.



PLEASE NOTE:

All traffic, including access to local businesses, will be maintained at all times. Flaggers and signage will be in place to assist with traffic.



LAX Construction Hotline: 310-649-5292 LAXConstructionHotline@LAWA.org

flyLAX.com @flyLAXairport LAInternationalAirport

CONSTRUCTION HOT TOPICS

#4 SECURITY BADGE OFFICE: SIDEWALK RESTRICTIONS

TO FACILITATE FINAL PAVING AND RESTORATION OF JETWAY BLVD, 24/7 SIDEWALK RESTRICTIONS ARE IN PLACE NEAR THE SECURITY BADGE OFFICE THROUGH FRIDAY, MARCH 15, 2024.



PLEASE NOTE:

Detours are in place to assist with the maintenance of vehicular and pedestrian traffic. Please watch for posted signage and always use caution when traveling near construction areas.



LAX Construction Hotline: 310-649-5292 LAXConstructionHotline@LAWA.org

flyLAX.com @flyLAXairport LAInternationalAirport

CONSTRUCTION HOT TOPICS



#5 MARCH 2024: CTA LANE RESTRICTIONS

THE MAP BELOW IS A COLLECTIVE SNAPSHOT OF ALL SCHEDULED 24/7 LANE RESTRICTIONS FOR CTA DEPARTURES AND ARRIVALS LEVEL ROADWAYS FOR THE MONTH OF MARCH 2024.

PLEASE NOTE:

This map only reflects 24/7 continuous lane closures in the CTA; other nightly lane closures / sidewalk restrictions may be in place to facilitate construction activities

ACCESS MAINTAINED:

Traffic around the Central Terminal Area will be maintained at all times, as well as access to passenger pick-up and drop-off

PLAN AHEAD:

Motorists should plan ahead for potential delays

