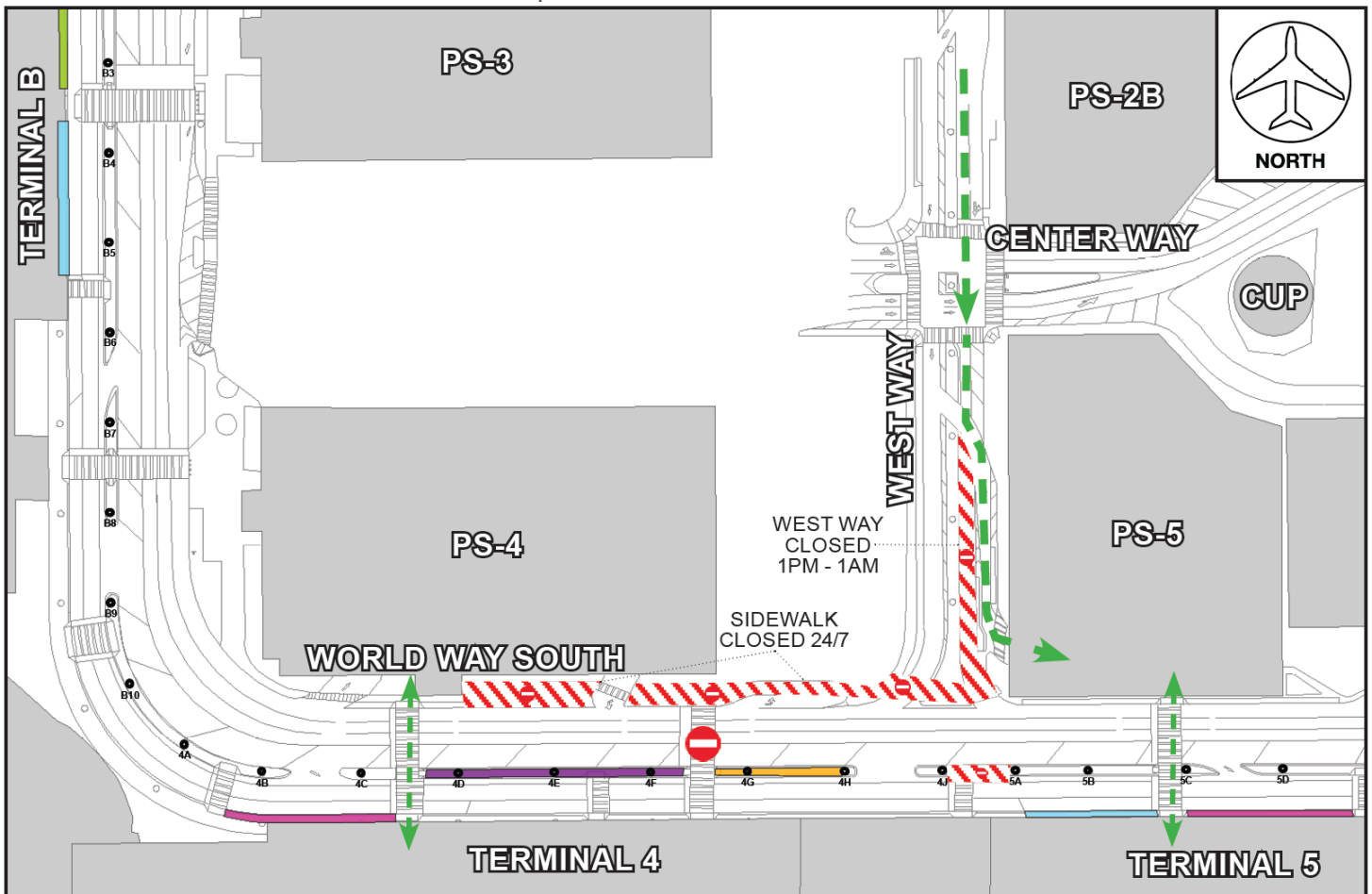


# CONSTRUCTION HOT TOPICS

## #1

### DATE EXTENSION: WORLD WAY SOUTH AND WEST WAY RESTRICTIONS

TO FACILITATE THE INSTALLATION OF A NEW CROSSWALK AND TRAFFIC SIGNAL FOR THE APM PROJECT, MODIFIED LANE AND CROSSWALK RESTRICTIONS REMAIN IN PLACE AT WEST WAY AND WORLD WAY SOUTH (ARRIVALS LEVEL) THROUGH TUESDAY, APRIL 30 (EXTENDED FROM MARCH 29).



### PLEASE NOTE:

The new signal activation date is yet to be determined.  
Watch Construction Hot Topics for more information about this project.

LAX Construction Hotline: 310-649-5292 LAXConstructionHotline@LAWA.org



flyLAX.com

X @flyLAXairport

f LAInternationalAirport



# CONSTRUCTION HOT TOPICS

## #2

## TERMINAL 6 AIRLINE GATES RE-OPENING

THE FOLLOWING ARE SCHEDULED DATES  
FOR AIRLINE GATES RE-OPENING IN  
TERMINAL 6:

GATE 61: APRIL 3 (CLOSED AUGUST 2021)

GATE 65B: APRIL 25 (CLOSED JUNE 2023)

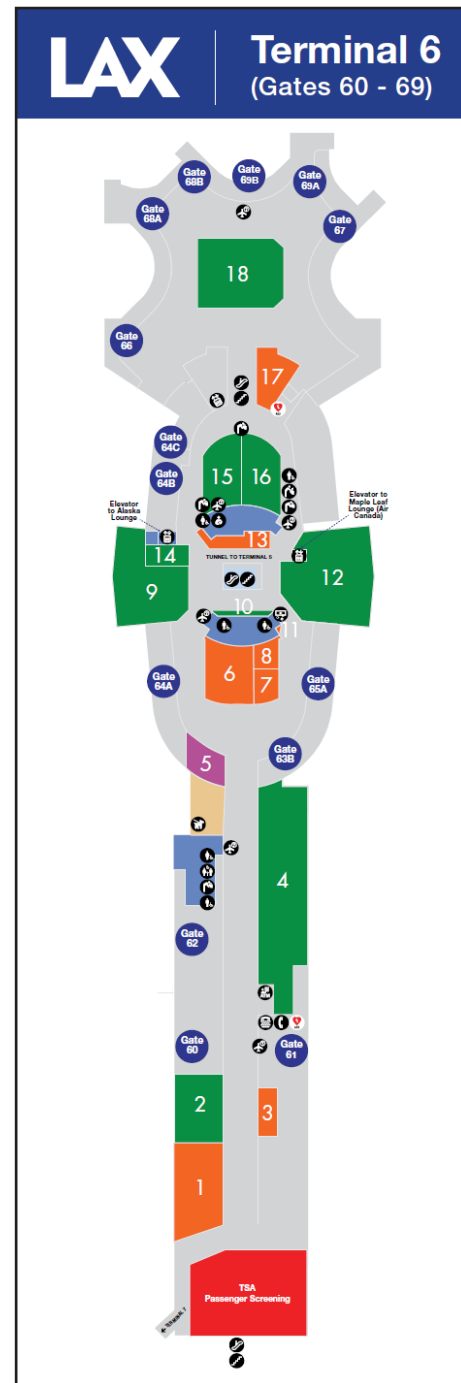
GATE 67: APRIL 19 (CLOSED AUGUST 2023)

GATE 69A: APRIL 14 (CLOSED AUGUST 2023)

GATE 69B: APRIL 1 (CLOSED AUGUST 2023)

### PLEASE NOTE:

Airline gate closures are in place to facilitate various construction activities for the Alaska Airlines Terminal 6 Redevelopment Program. Passenger holdrooms and seating areas remain available throughout the terminal.



LAX Construction Hotline: 310-649-5292 | LAXConstructionHotline@LAWA.org



flyLAX.com

@flyLAXairport

LAInternationalAirport



# CONSTRUCTION HOT TOPICS

## #3

### DATE EXTENSION: EASTBOUND LANE CLOSURE ON ARBOR VITAE STREET

TO FACILITATE WORK FOR THE CONRAC FACILITY, A SINGLE EASTBOUND LANE ON ARBOR VITAE ST BETWEEN MAINTENANCE DR AND AVIATION BLVD IS CLOSED THROUGH FRIDAY, APRIL 12, DAILY (M-F) FROM 6AM TO 3PM (EXTENDED ONE WEEK FROM APRIL 5).



### PLEASE NOTE:

All traffic, including access to local businesses, is maintained at all times with flaggers & signage.

LAX Construction Hotline: 310-649-5292 LAXConstructionHotline@LAWA.org



flyLAX.com



@flyLAXairport



LAInternationalAirport



# CONSTRUCTION HOT TOPICS

## #4

### APRIL 2024: CTA LANE RESTRICTIONS

#### PLEASE NOTE:

This map only reflects 24/7 continuous lane closures in the CTA; other nightly lane closures / sidewalk restrictions may be in place to facilitate construction activities

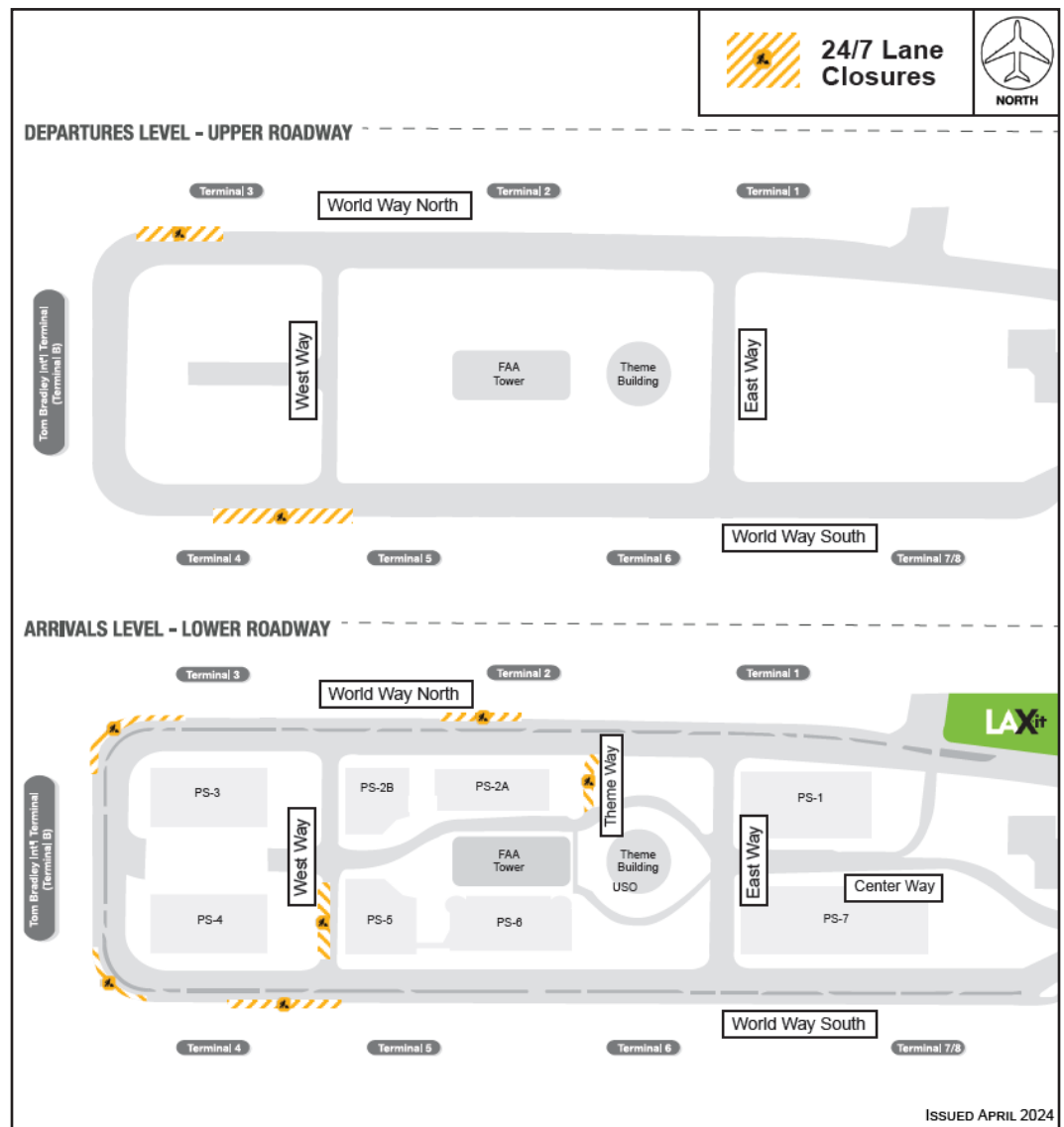
#### ACCESS MAINTAINED:

Traffic around the Central Terminal Area will be maintained at all times, as well as access to passenger pick-up and drop-off

#### PLAN AHEAD:

Motorists should plan ahead for potential delays

THE MAP BELOW IS A COLLECTIVE SNAPSHOT OF ALL SCHEDULED 24/7 LANE RESTRICTIONS FOR CTA DEPARTURES AND ARRIVALS LEVEL ROADWAYS FOR THE MONTH OF APRIL 2024.



LAX Construction Hotline: 310-649-5292 LAXConstructionHotline@LAWA.org



flyLAX.com

@flyLAXairport

LAInternationalAirport

