

CONSTRUCTION HOT TOPICS

#1 TOM BRADLEY INTERNATIONAL TERMINAL VERTICAL CORE OPENING APRIL 16

THE TOM BRADLEY INTERNATIONAL TERMINAL ("TERMINAL B") VERTICAL CORE IS SCHEDULED TO OPEN TUESDAY, APRIL 16.

IN ADDITION TO PROVIDING CONNECTION TO THE FUTURE AUTOMATED PEOPLE MOVER SYSTEM, THE NEW VERTICAL CORE WILL PROVIDE PASSENGERS WITH EASIER ACCESS BETWEEN ARRIVALS AND DEPARTURES LEVELS AND AN ENHANCED, MODERNIZED GUEST EXPERIENCE



 LAX Construction Hotline: 310-649-5292  LAXConstructionHotline@LAWA.org

LAX

flyLAX.com

  @flyLAXairport

 LAInternationalAirport

CALM
Coordination and Logistics Management

CONSTRUCTION HOT TOPICS

#2

RAMP & LANE RESTRICTIONS: I-405 AND LA CIENEGA BLVD APRIL 19-22

TO FACILITATE WORK FOR THE ROADWAY AND UTILITY ENABLING PROJECT, THE FOLLOWING ARE SCHEDULED TO BE CLOSED FRIDAY, APRIL 19 AT 11PM CONTINUOUS THROUGH MONDAY, APRIL 22 AT 6AM:

SOUTHBOUND I-405 RAMPS:

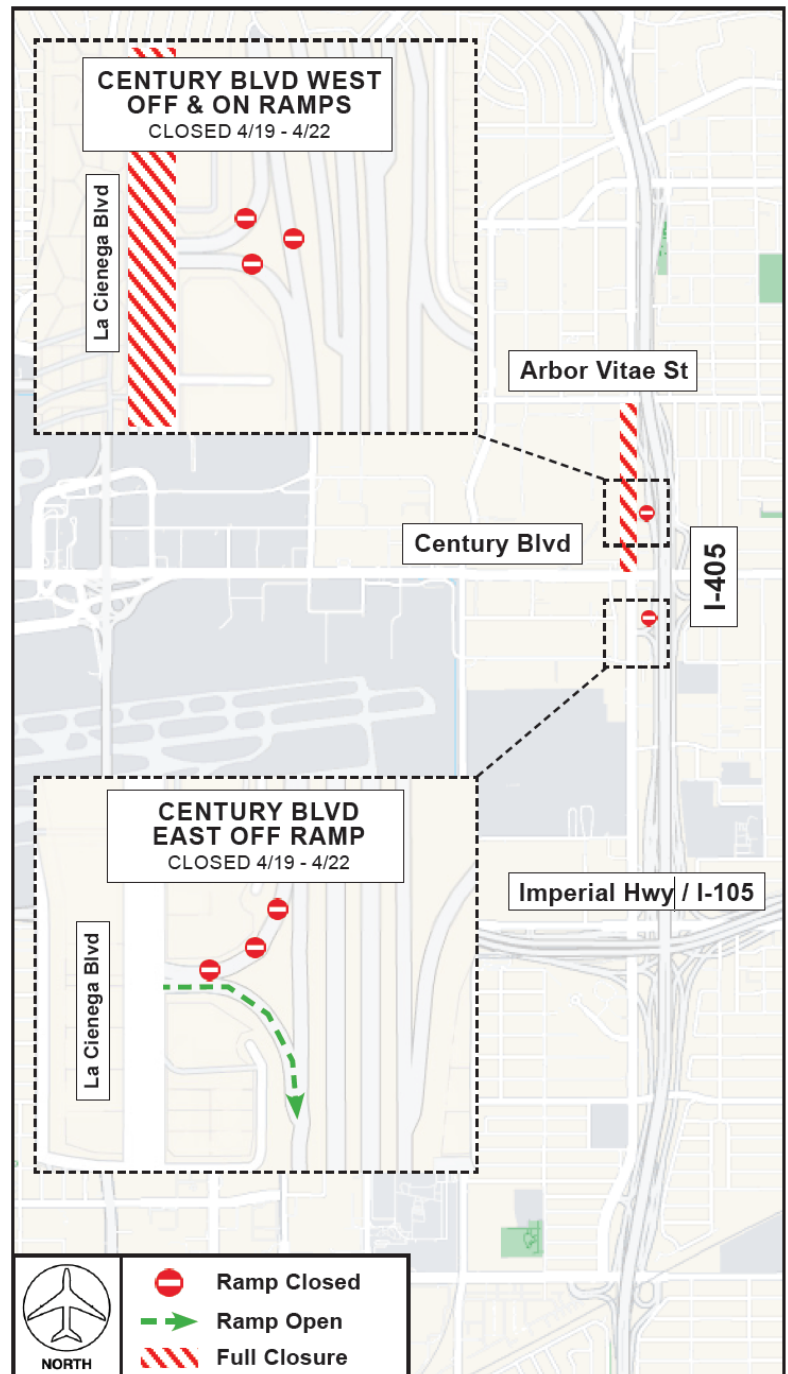
WEST RAMP - BOTH OFF AND ON RAMPS CLOSED (INCLUDING COLLECTOR DISTRIBUTOR ROAD)

EAST RAMP - OFF RAMP CLOSED;
ON RAMP REMAINS OPEN

LA CIENEGA BLVD: FULL CLOSURE
BETWEEN CENTURY BLVD AND
ARBOR VITAE ST FOR PAVING
ACTIVITY.

PLEASE NOTE:

Access to local businesses will be maintained at all times. Detour signage will be posted.



LAX Construction Hotline: 310-649-5292 LAXConstructionHotline@LAWA.org

LAX

flyLAX.com

X @flyLAXairport

f LAInternationalAirport

CALM
Coordination and Logistics Management

CONSTRUCTION HOT TOPICS

#3 TERMINAL 6 AIRLINE GATES RE-OPENING

THE FOLLOWING ARE SCHEDULED DATES FOR AIRLINE GATES RE-OPENING IN TERMINAL 6 IN APRIL & MAY 2024:

GATE 69A: APRIL 18 (CLOSED AUGUST 2023)

GATE 67: APRIL 24 (CLOSED AUGUST 2023)

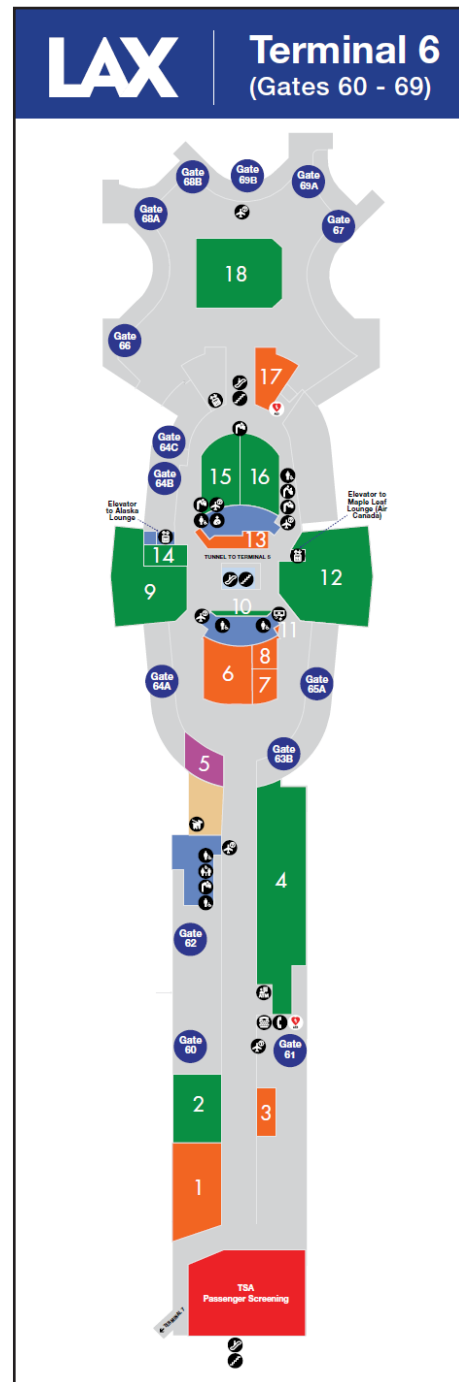
GATE 65B: MAY 2 (CLOSED JUNE 2023)

GATE 61: MAY 15 (CLOSED APRIL 2021)

GATE 69B: MAY 15 (CLOSED AUGUST 2023)

PLEASE NOTE:

Airline gate closures are in place to facilitate various construction activities for the Alaska Airlines Terminal 6 Redevelopment Program. Passenger holdrooms and seating areas remain available throughout the terminal.



LAX Construction Hotline: 310-649-5292 | LAXConstructionHotline@LAWA.org



flyLAX.com

@flyLAXairport

LAInternationalAirport



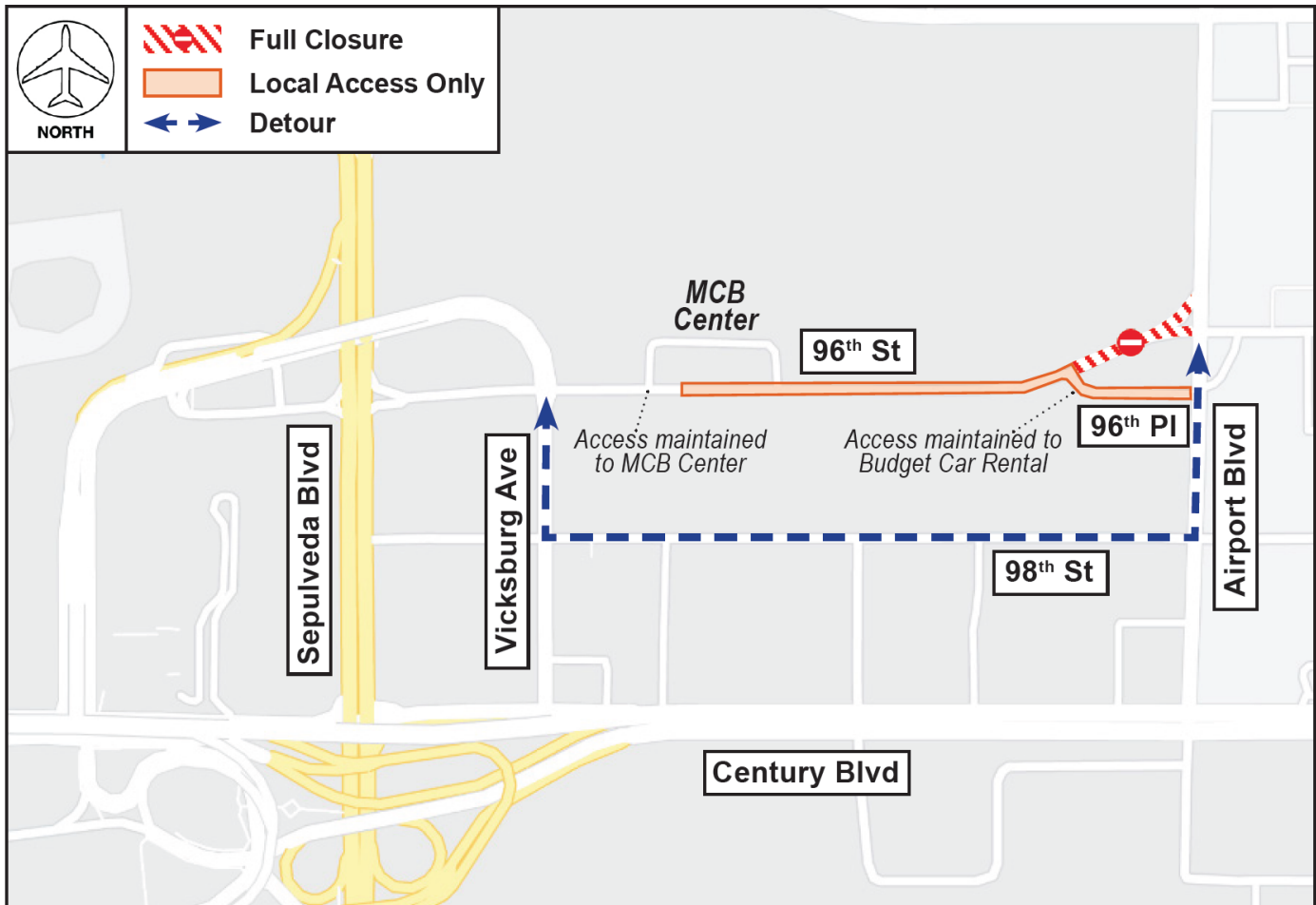
CONSTRUCTION HOT TOPICS

#4

96TH STREET WORK POSTPONED DUE TO WEATHER

WORK ON 96TH STREET THAT WAS SCHEDULED TO TAKE PLACE LAST WEEKEND (APRIL 13) WAS UNABLE TO PROCEED DUE TO INCLEMENT WEATHER.

WORK WILL BE RESCHEDULED FOR A FUTURE DATE; PLEASE WATCH CONSTRUCTION HOT TOPICS FOR MORE INFORMATION.



PLEASE NOTE:

When work proceeds, access to the Metro City Bus Center will be maintained at all times via 96th St and access to Budget Rental Car will be maintained at all times via 96th Pl.

LAX Construction Hotline: 310-649-5292 LAXConstructionHotline@LAWA.org



flyLAX.com

@flyLAXairport

LAInternationalAirport



CONSTRUCTION HOT TOPICS



#5 APRIL 2024: CTA LANE RESTRICTIONS

THE MAP BELOW IS A COLLECTIVE SNAPSHOT OF ALL SCHEDULED 24/7 LANE RESTRICTIONS FOR CTA DEPARTURES AND ARRIVALS LEVEL ROADWAYS FOR THE MONTH OF APRIL 2024.

PLEASE NOTE:

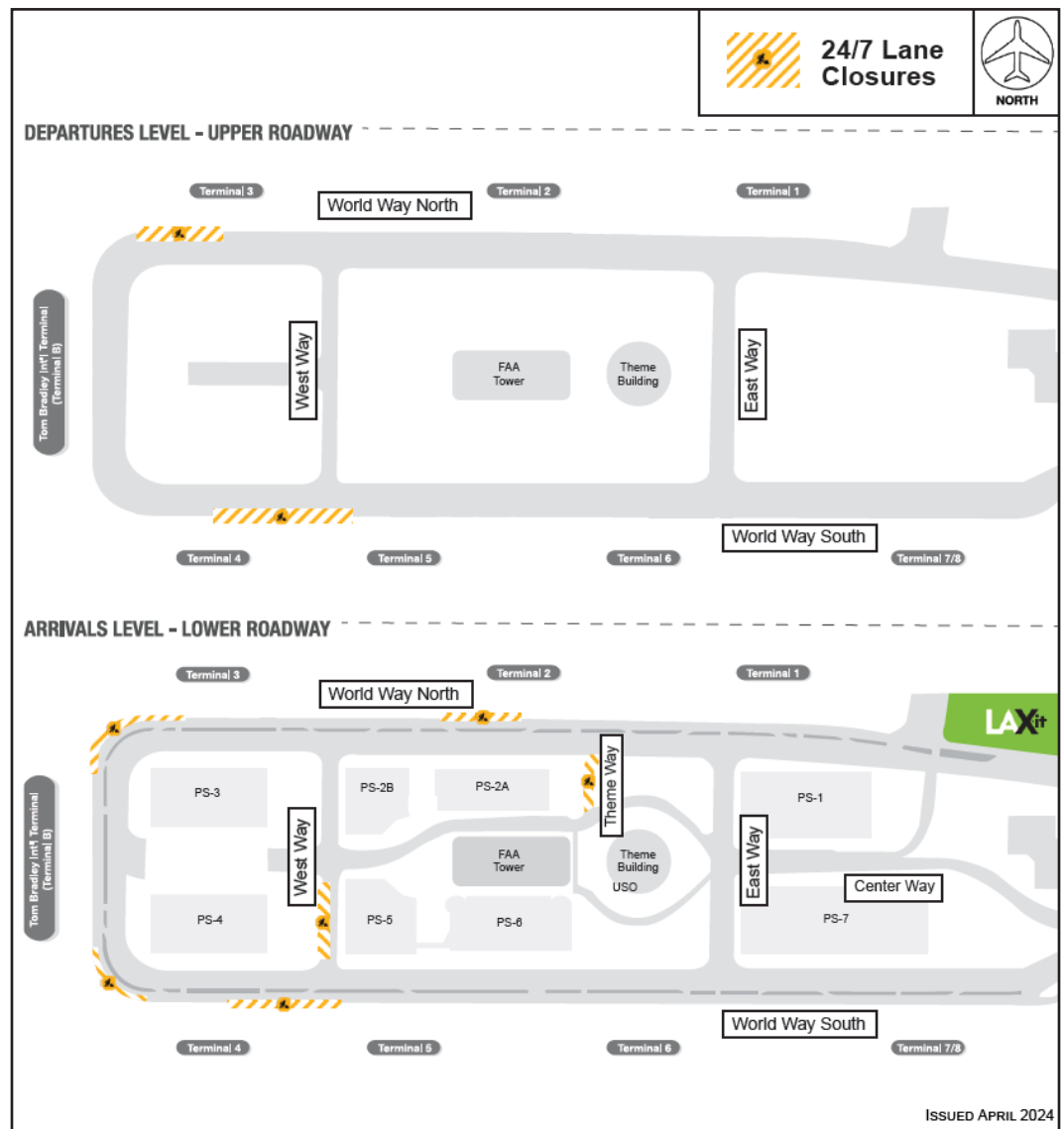
This map only reflects 24/7 continuous lane closures in the CTA; other nightly lane closures / sidewalk restrictions may be in place to facilitate construction activities

ACCESS MAINTAINED:

Traffic around the Central Terminal Area will be maintained at all times, as well as access to passenger pick-up and drop-off

PLAN AHEAD:

Motorists should plan ahead for potential delays



LAX Construction Hotline: 310-649-5292 | LAXConstructionHotline@LAWA.org



flyLAX.com

@flyLAXairport

LAInternationalAirport

