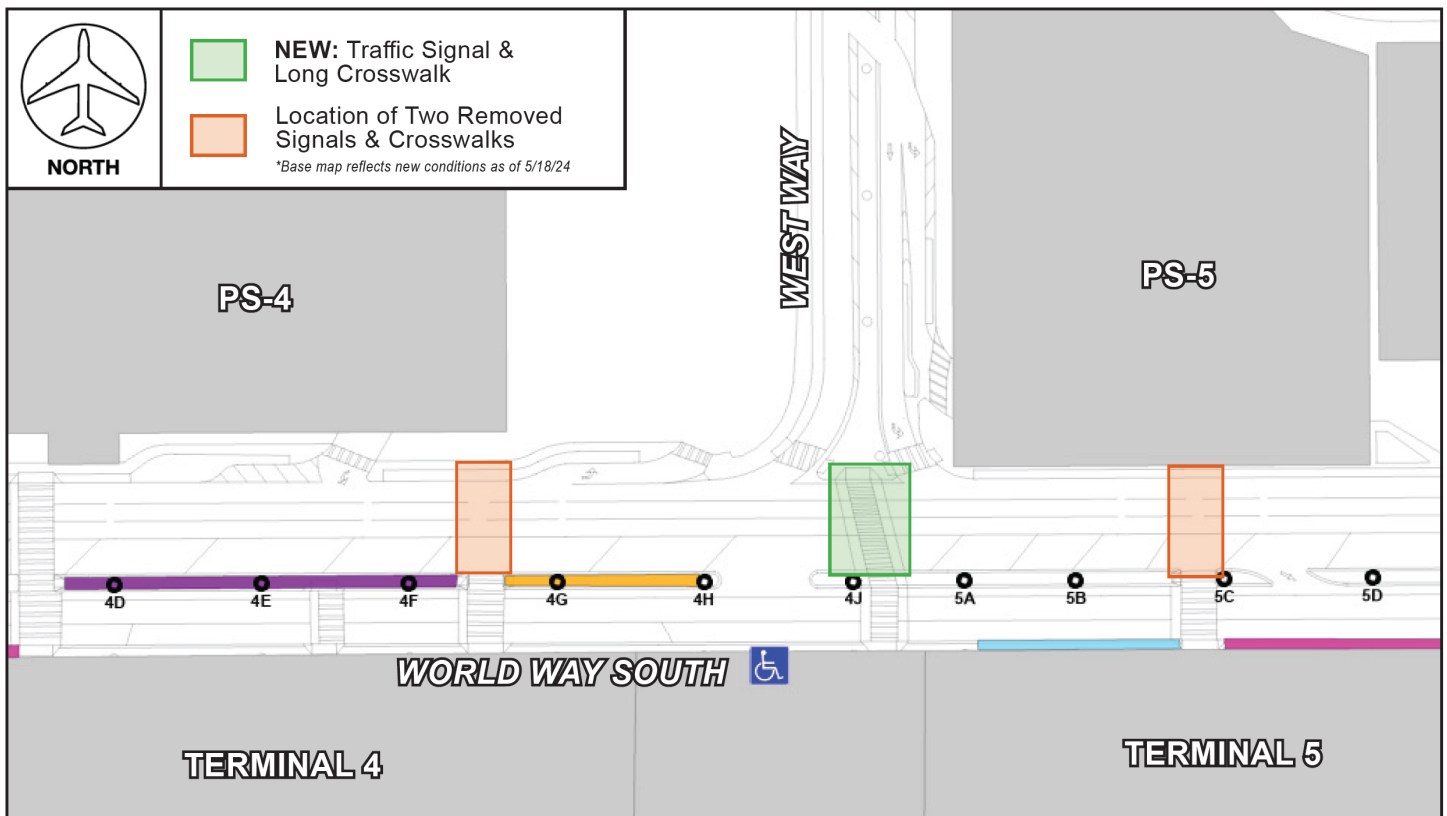


# CONSTRUCTION HOT TOPICS

## #1 NEW CTA CROSSWALK & TRAFFIC SIGNAL

A NEW TRAFFIC SIGNAL AND LONG CROSSWALK IN THE CENTRAL TERMINAL AREA HAVE BEEN ACTIVATED AND ARE IN USE AT THE INTERSECTION OF WORLD WAY SOUTH AND WEST WAY (ARRIVALS LEVEL). THE TRAFFIC SIGNALS AND LONG CROSSWALKS TO THE EAST & WEST HAVE BEEN REMOVED.



### PLEASE NOTE:

All "short crosswalk" sections from the Terminals to the Center Median Curbs remain as-is and are not impacted by this work.

LAX Construction Hotline: 310-649-5292 | LAXConstructionHotline@LAWA.org



flyLAX.com

@flyLAXairport

LAInternationalAirport



# CONSTRUCTION HOT TOPICS

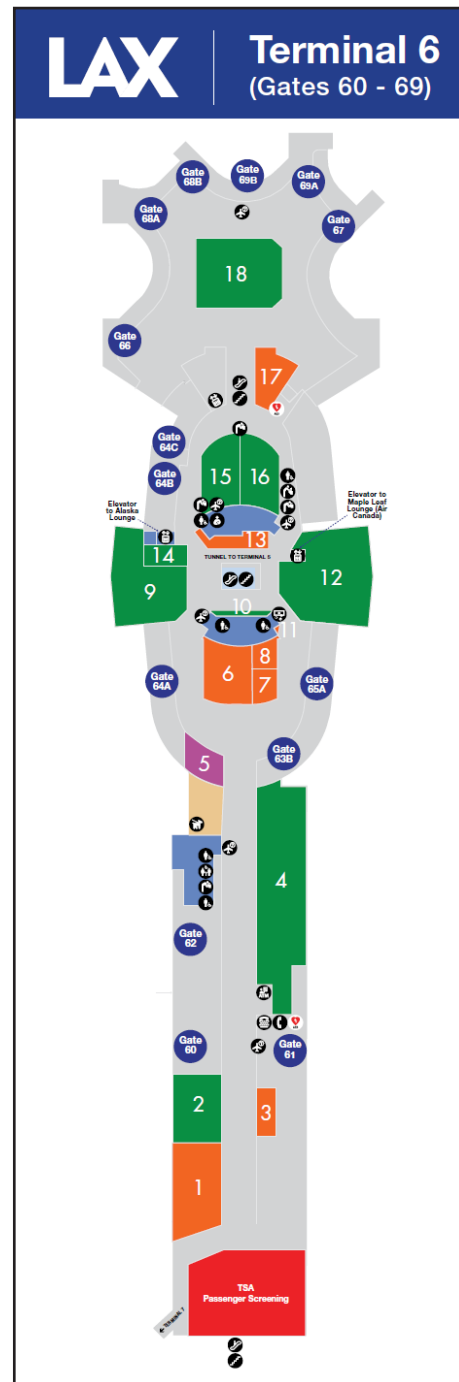
## #2 TERMINAL 6 AIRLINE GATES RE-OPENING

THE FOLLOWING AIRLINE GATES ARE SCHEDULED TO RE-OPEN IN TERMINAL 6 ON JUNE 1, 2024: GATE 61, GATE 63A, GATE 63B, & GATE 65B.

WHILE GATES ARE CLOSED FOR PASSENGER AND AIRLINE OPERATIONS, PASSENGER HOLD ROOM AREAS INSIDE THE TERMINAL REMAIN AVAILABLE WITH SEATING AND ACCESS TO POWER OUTLETS, WIFI AND TERMINAL FACILITIES.

### PLEASE NOTE:

Airline gate closures are in place to facilitate various construction activities for the Alaska Airlines Terminal 6 Redevelopment Program. Passenger holdrooms and seating areas remain available throughout the terminal.



LAX Construction Hotline: 310-649-5292 | LAXConstructionHotline@LAWA.org



flyLAX.com

@flyLAXairport

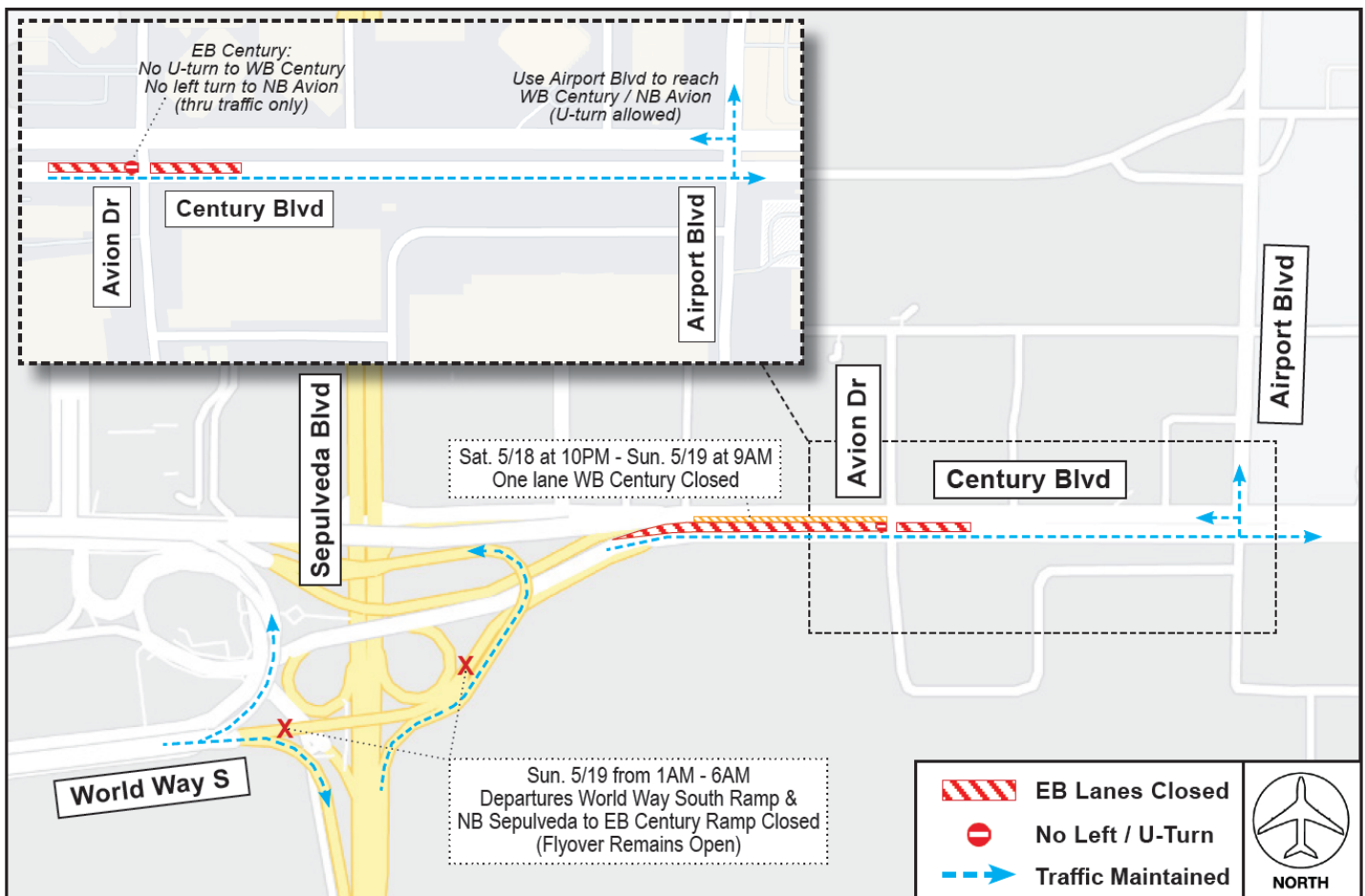
LAInternationalAirport



# CONSTRUCTION HOT TOPICS

## #3 COMPLETED: CENTURY BLVD LANE CLOSURES MAY 18 - 19

WORK BY THE APM PROJECT THAT CLOSED UP TO TWO EASTBOUND LANES ON CENTURY BOULEVARD BETWEEN THE LAX EXIT RAMP AND AVION DRIVE HAS BEEN COMPLETED. FUTURE WORK IS PLANNED FOR THIS AREA; WATCH CONSTRUCTION HOT TOPICS FOR MORE INFORMATION ABOUT LANE CLOSURES AND ACCESS / MAINTENANCE OF TRAFFIC.



### PLEASE NOTE:

Civil modifications are occurring at this area;  
Please pay close attention to the roadway as conditions have changed.

LAX Construction Hotline: 310-649-5292 LAXConstructionHotline@LAWA.org



flyLAX.com

@flyLAXairport

LAInternationalAirport



# CONSTRUCTION HOT TOPICS



## #4 MAY 2024: CTA LANE RESTRICTIONS

THE MAP BELOW IS A COLLECTIVE SNAPSHOT OF ALL SCHEDULED 24/7 LANE RESTRICTIONS FOR CTA DEPARTURES AND ARRIVALS LEVEL ROADWAYS FOR THE MONTH OF MAY 2024.

### PLEASE NOTE:

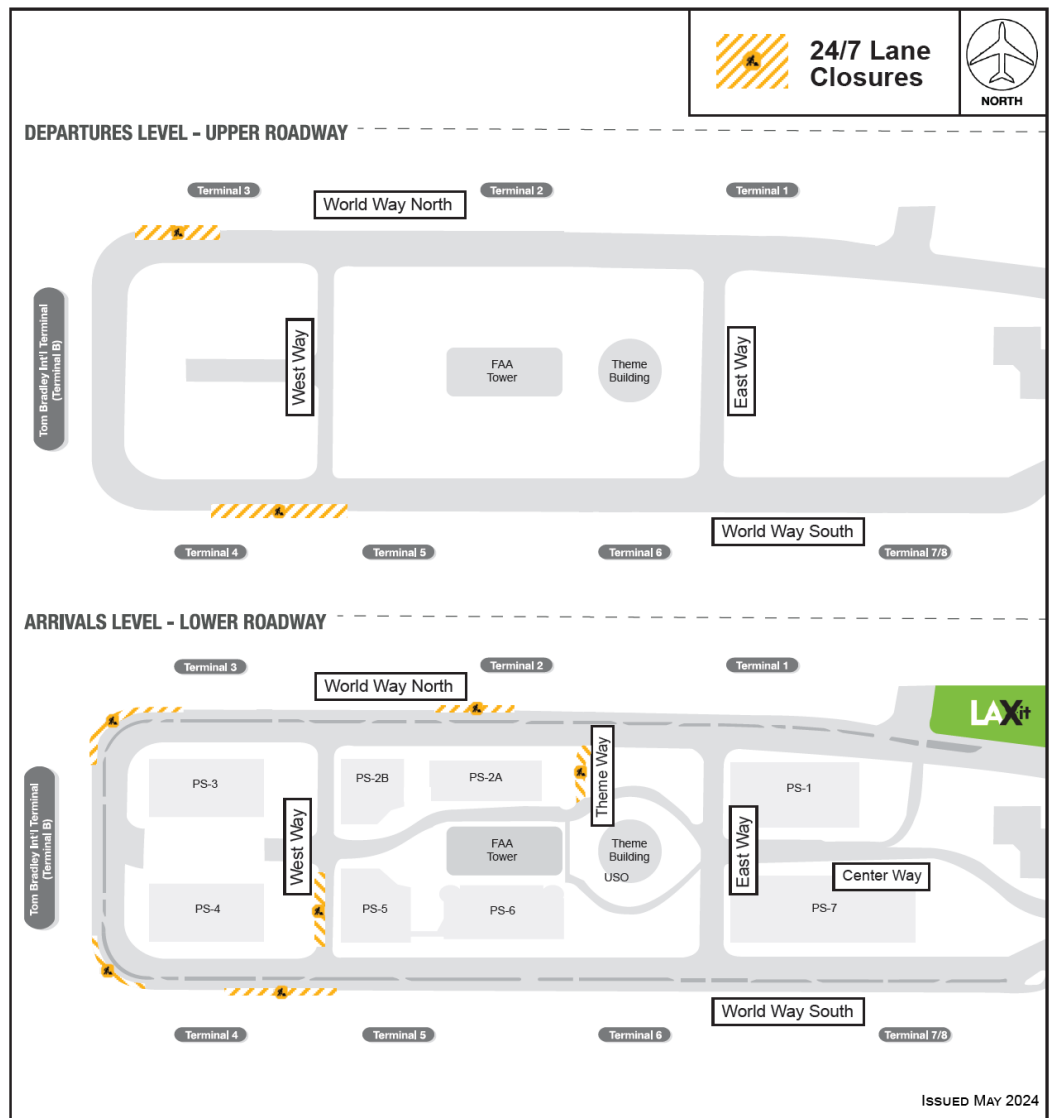
This map only reflects 24/7 continuous lane closures in the CTA; other nightly lane closures / sidewalk restrictions may be in place to facilitate construction activities

### ACCESS MAINTAINED:

Traffic around the Central Terminal Area will be maintained at all times, as well as access to passenger pick-up and drop-off

### PLAN AHEAD:

Motorists should plan ahead for potential delays



LAX Construction Hotline: 310-649-5292 | LAXConstructionHotline@LAWA.org



flyLAX.com

@flyLAXairport

LAInternationalAirport

