

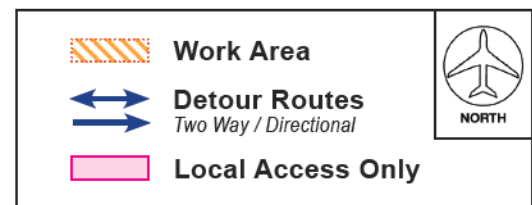
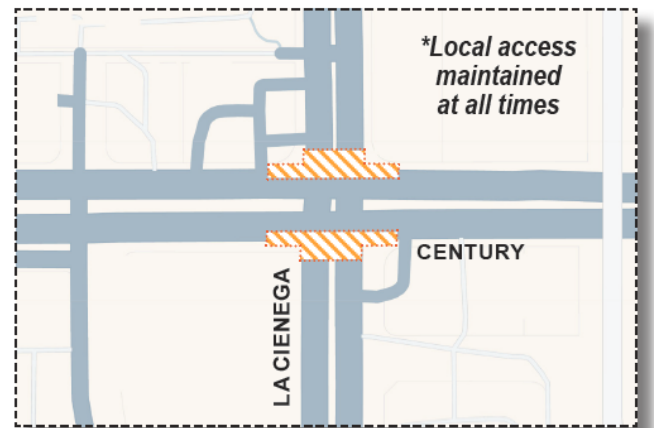
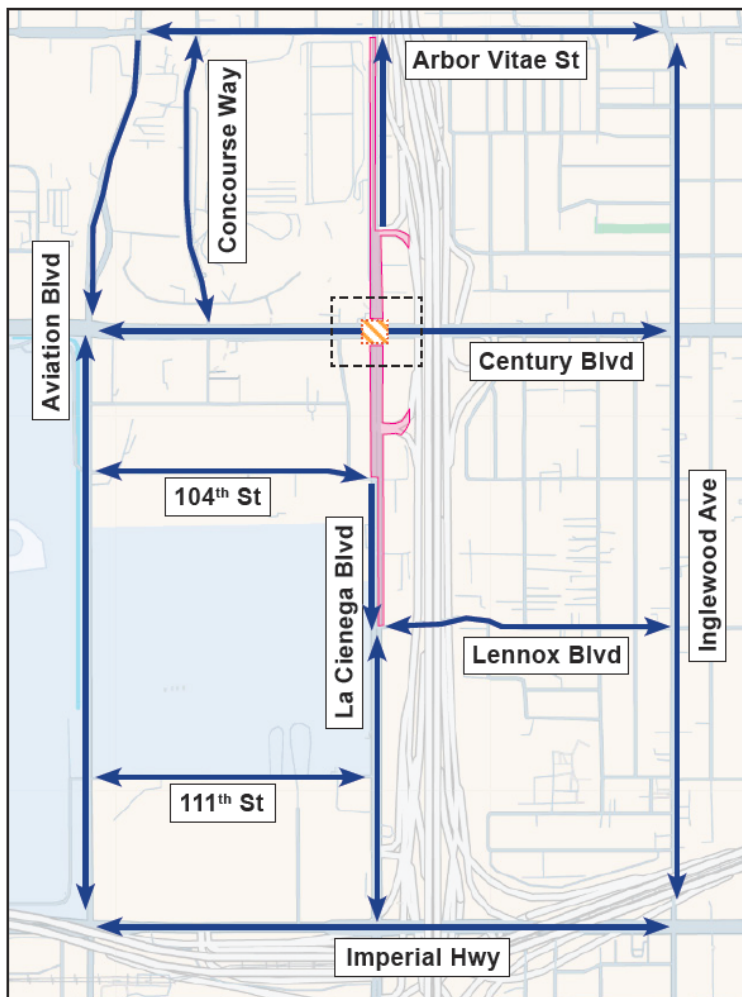
CONSTRUCTION HOT TOPICS

#1

24/7 LANE IMPACTS: THIS WEEKEND: MARCH 7 - 10 CENTURY BLVD + LA CIENEGA BLVD

To facilitate work by the Roadway & Utility Enabling Project, 24/7 lane restrictions are scheduled this weekend on Century Boulevard at the intersection of La Cienega Boulevard beginning Friday, March 7 at 9PM continuous through Monday, March 10 at 6AM.

Local access will be maintained at all times for businesses near the work area.



Detour signage will be in place where necessary to facilitate traffic movements. Please watch for posted signage and always use caution when traveling near construction areas.

LAX Construction Hotline: 310-649-5292 LAXConstructionHotline@LAWA.org



flyLAX.com

[@flyLAXairport](https://www.instagram.com/flyLAXairport)

[LAInternationalAirport](https://www.facebook.com/LAInternationalAirport)



CONSTRUCTION HOT TOPICS

#2

NIGHTLY LANE RESTRICTIONS: SEPULVEDA BLVD

To facilitate underground utility investigations for the Airfield and Terminal Modernization Project, lane restrictions will be in place on Sepulveda Boulevard between the Vicksburg Avenue Bridge and the Sepulveda Tunnel through Friday, March 14, nightly from 10PM to 5AM.

Through traffic will be maintained in both directions; up to three lanes may be restricted with at least one lane open at all times.

Detours will be in place to facilitate traffic movements; watch for posted signage and follow detour routes.

Please use caution when traveling near construction areas and plan ahead for potential delays.



LAX Construction Hotline: 310-649-5292 LAXConstructionHotline@LAWA.org



flyLAX.com



@flyLAXairport



LAInternationalAirport



CONSTRUCTION HOT TOPICS

#3

NOW OPEN: NORTH COURTYARD PLAZA

Just in time for Spring, the new North Courtyard Plaza, located on the Arrivals Level between Terminal 3 and Terminal B, is now open to the public! All curbside construction barricades have been removed, and the sidewalk and all traffic lanes have been restored and re-opened for regular operations.



 LAX Construction Hotline: 310-649-5292  LAXConstructionHotline@LAWA.org

LAX

flyLAX.com

 @flyLAXairport

 LAInternationalAirport

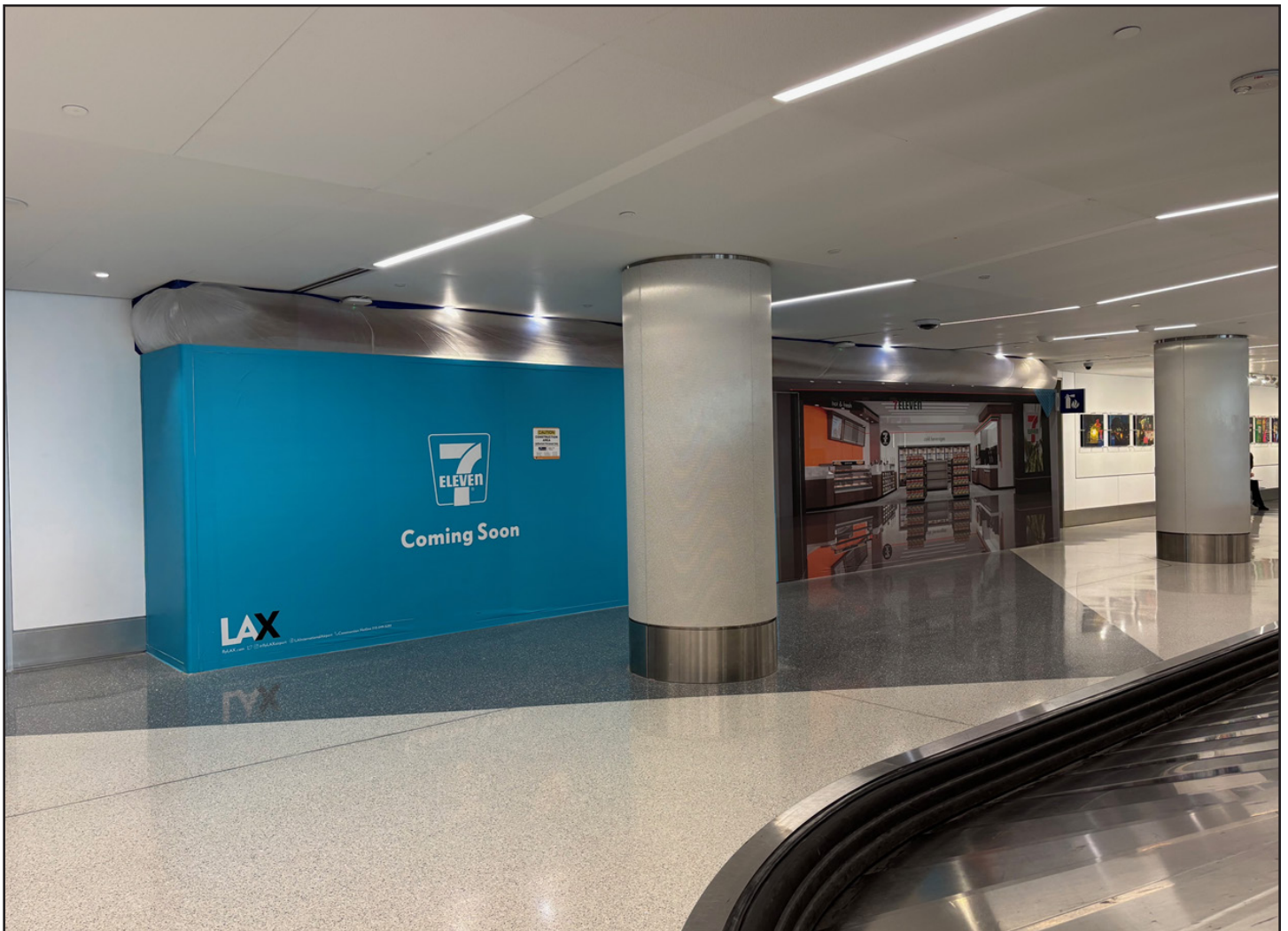
CALM
Coordination and Logistics Management

CONSTRUCTION HOT TOPICS

#4

NOW OPEN: TERMINAL 1 PRE-SECURITY 7-ELEVEN

The 7-Eleven in Terminal 1 Bag Claim (before security) is officially open! 7-Eleven offers a mix of fresh and hot foods, beverages, snacks, travel-size toiletry products and nonfood items like over-the-counter medications and magazines. Visit [FlyLAX.com](https://www.flyLAX.com) to learn more about this and other retail, shopping & dining options at LAX Airport.



 LAX Construction Hotline: 310-649-5292  LAXConstructionHotline@LAWA.org

LAX

[flyLAX.com](https://www.flyLAX.com)



[@flyLAXairport](https://twitter.com/flyLAXairport)



[LAInternationalAirport](https://www.facebook.com/LAInternationalAirport)

CALM
Coordination and Logistics Management

CONSTRUCTION HOT TOPICS

#5

MARCH 2025: 24/7 CTA LANE RESTRICTIONS

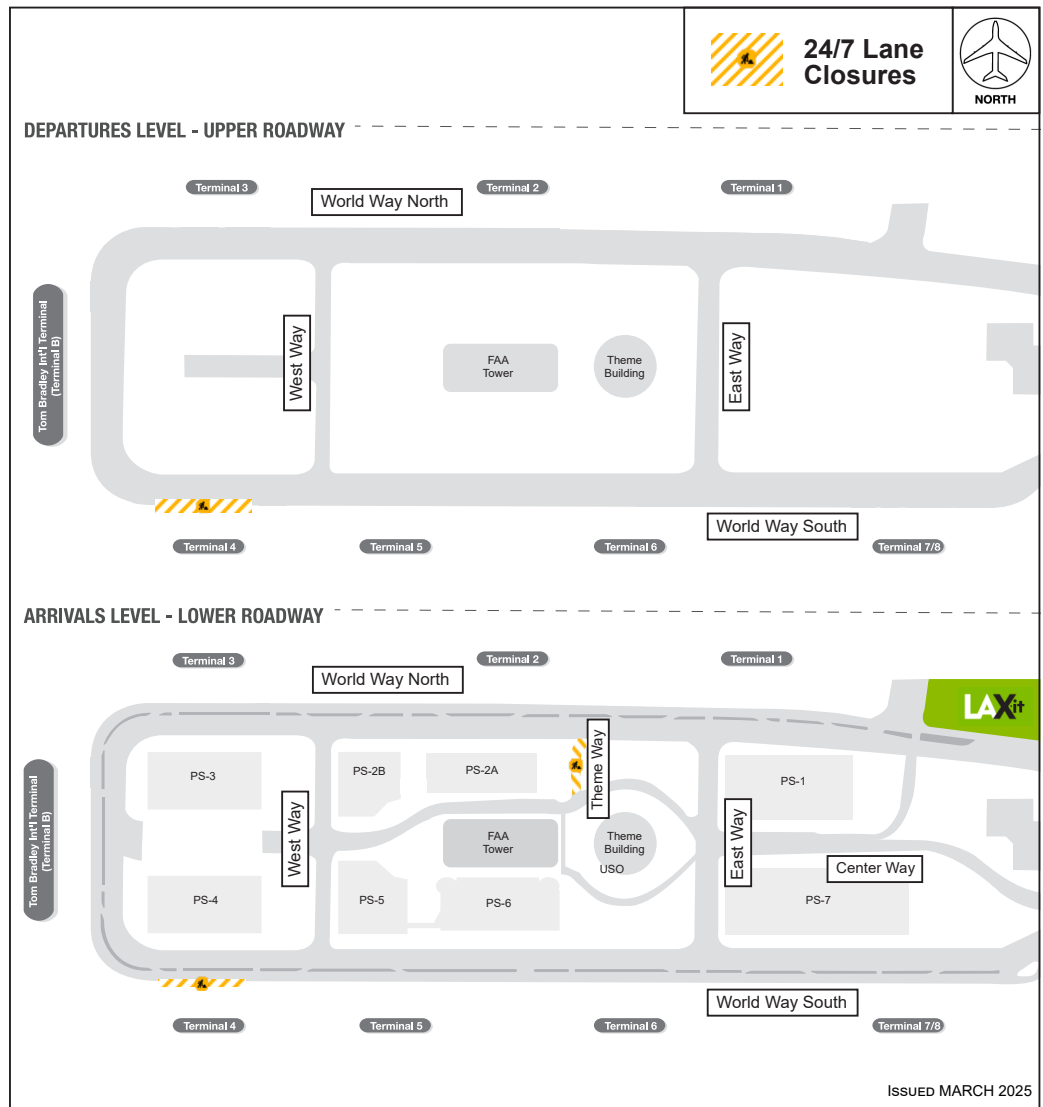
Here is a collective snapshot of scheduled 24/7 lane restrictions for CTA Departures and Arrivals Level Roadways for the month of March 2025.

This map only reflects 24/7 continuous lane closures in the CTA; nightly lane / sidewalk restrictions may be in place to facilitate construction activities.

Traffic around the Central Terminal Area will be maintained at all times, as well as access to passenger pick-up and drop-off and ingress to / egress from parking structures.

Motorists should plan ahead for potential delays and use caution when traveling near construction areas.

Visit FlyLAX.com to check [LAX Live Traffic Conditions](#) 24/4!



LAX Construction Hotline: 310-649-5292 LAXConstructionHotline@LAWA.org



flyLAX.com

[@flyLAXairport](https://twitter.com/flyLAXairport)

[LAInternationalAirport](https://www.facebook.com/LAInternationalAirport)

