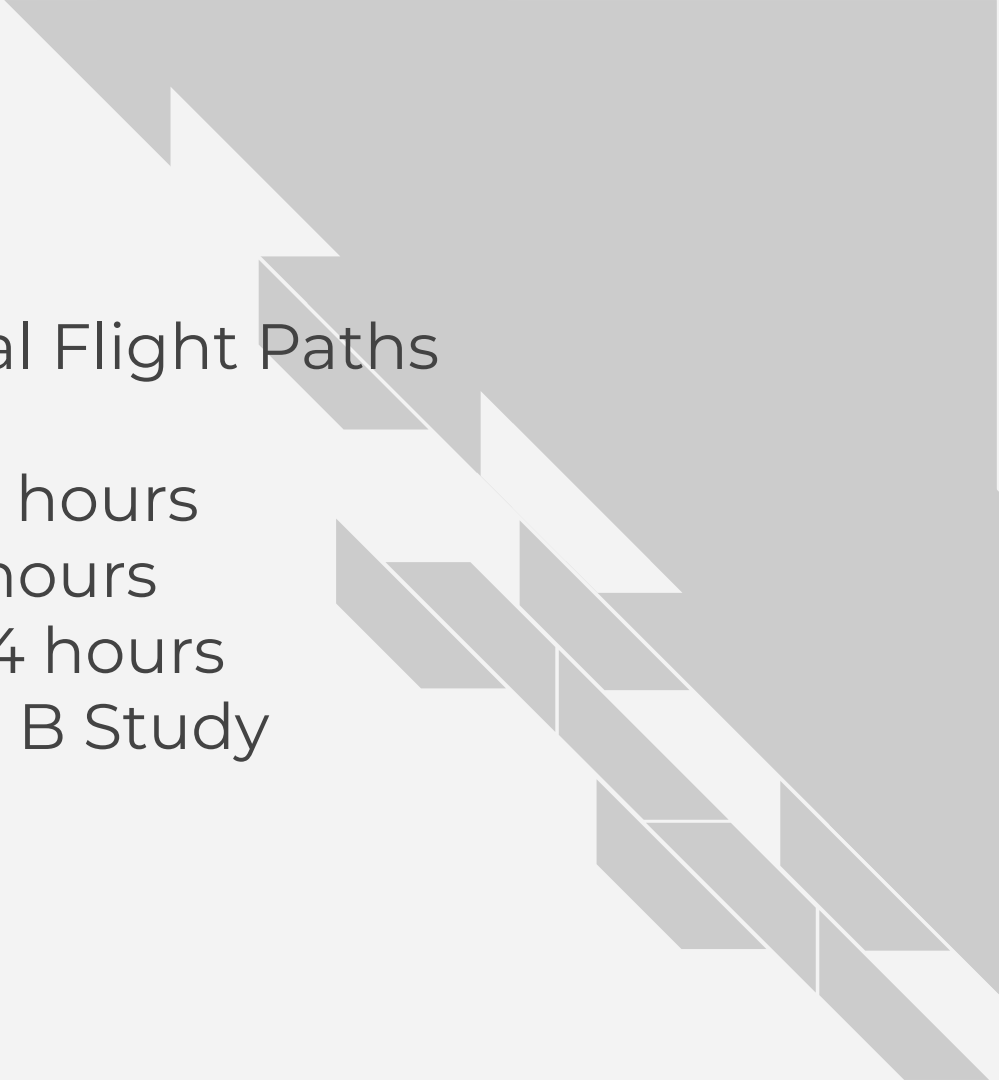


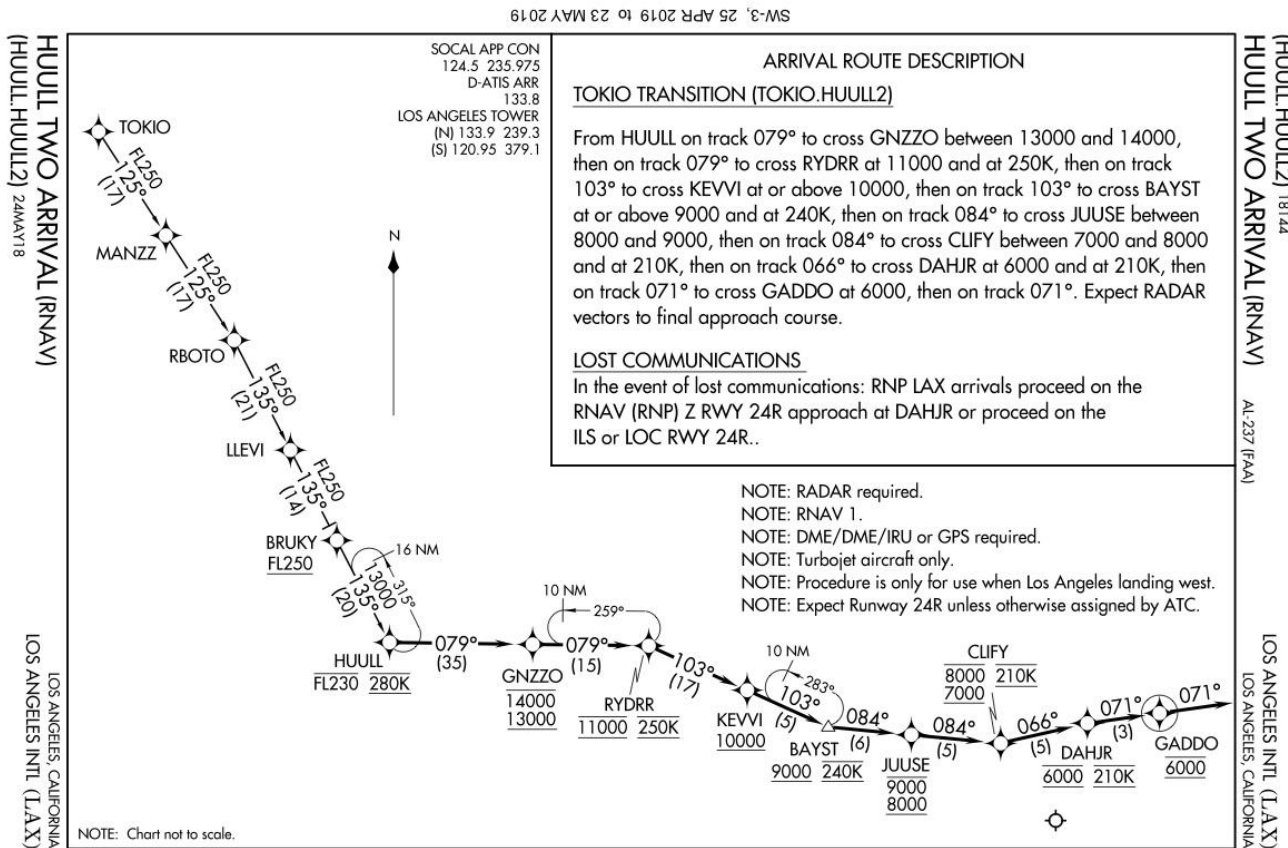


LAX Metroplex / Wide Area Ad Hoc Committee

LAX Community Noise Roundtable
Nov 2020

- 
1. North Downwind Arrival Flight Paths
 2. LAX and Other Airports
 3. DАHJR Flight Data - 24 hours
 4. DАHJR - 0100 to 0500 hours
 5. GADDO Flight Data - 24 hours
 6. Quiet Skies LA - Option B Study

1. North Downwind Arrival Flight Paths - HUULL



HUULL, IRNMN, & DAHJR are the three North Downwind Arrival Flight Paths into LAX

3. 6000 Foot Alt +/- 300 at DAHJR - 24 hours

ANOMS Gate Penetration - DAHJR
January 1-31, 2019

Altitude MSL (ft)	Count of Ops*	% of Ops	% of Ops Between Altitudes	% of Ops At or Above Altitudes
>6300	552	7.6%		
6000-6299	1636	22.5%		
5700-5999	1958	26.9%	56.9%	
5500-5699	979	13.4%	43.1%	
5000-5499	1423	19.5%		89.9%
4500-4999	522	7.2%		99.2%
4000-4499	156	2.1%		
3500-3999	50	0.7%		100.0%
3000-3499	10	0.1%		
2500-2999	1	0.0%		
<2500	0	0.0%		100.0%
Grand Total	7287	100%		

Prepared by: LAWA Noise Management
*Data source: LAX ANOMS

ANOMS Gate Penetration - DAHJR
February 1-28, 2019

Altitude MSL (ft)	Count of Ops*	% of Ops	% of Ops Between Altitudes	% of Ops At or Above Altitudes
>6300	765	9.9%		
6000-6299	1996	25.9%		
5700-5999	2214	28.7%	64.6%	
5500-5699	968	12.6%	35.4%	
5000-5499	1251	16.2%		93.4%
4500-4999	368	4.8%		99.4%
4000-4499	98	1.3%		
3500-3999	34	0.4%		99.9%
3000-3499	8	0.1%		
2500-2999	4	0.1%		
<2500	0	0.0%		100.0%
Grand Total	7706	100%		

Prepared by: LAWA Noise Management
*Data source: LAX ANOMS

ANOMS Gate Penetration - DAHJR
March 1-31, 2019

Altitude MSL (ft)	Count of Ops*	% of Ops	% of Ops Between Altitudes	% of Ops At or Above Altitudes
>6300	713	8.0%		
6000-6299	2220	24.9%		
5700-5999	2595	29.1%	62.0%	
5500-5699	1113	12.5%	38.0%	
5000-5499	1574	17.7%		92.1%
4500-4999	524	5.9%		99.5%
4000-4499	136	1.5%		
3500-3999	33	0.4%		100.0%
3000-3499	7	0.1%		
2500-2999	1	0.0%		
<2500	0	0.0%		100.0%
Grand Total	8916	100%		

Prepared by: LAWA Noise Management
*Data source: LAX ANOMS

ANOMS Gate Penetration - DAHJR
April 1-30, 2019

Altitude MSL (ft)	Count of Ops*	% of Ops	% of Ops Between Altitudes	% of Ops At or Above Altitudes
>6300	679	7.5%		
6000-6299	2368	26.1%		
5700-5999	2677	29.5%	63.1%	
5500-5699	1155	12.7%	36.9%	
5000-5499	1566	17.3%		93.2%
4500-4999	463	5.1%		99.6%
4000-4499	120	1.3%		
3500-3999	27	0.3%		100.0%
3000-3499	6	0.1%		
2500-2999	3	0.0%		
<2500	1	0.0%		100.0%
Grand Total	9065	100%		

Prepared by: LAWA Noise Management
*Data source: LAX ANOMS

3. 6000 Foot Alt +/- 300 at DAHJR - 24 hours

ANOMS Gate Penetration - DAHJR

May 1-31, 2019

Altitude MSL (ft)	Count of Ops*	% of Ops	% of Ops Between Altitudes	% of Ops At or Above Altitudes
>6300	660	7.1%		
6000-6299	2381	25.7%		
5700-5999	2669	28.9%	61.7%	
5500-5699	1209	13.1%	38.3%	
5000-5499	1630	17.6%		92.4%
4500-4999	517	5.6%		
4000-4499	141	1.5%		99.5%
3500-3999	29	0.3%		99.9%
3000-3499	10	0.1%		100.0%
2500-2999	4	0.0%		
<2500	1	0.0%		
Grand Total	9251	100%		

Prepared by: LAWA Noise Management

*Data source: LAX ANOMS

ANOMS Gate Penetration - DAHJR

July 1-31, 2019

Altitude MSL (ft)	Count of Ops*	% of Ops	% of Ops Between Altitudes	% of Ops At or Above Altitudes
>6300	784	7.9%		
6000-6299	2699	27.3%		
5700-5999	3129	31.6%	66.8%	
5500-5699	1313	13.3%	33.2%	
5000-5499	1508	15.2%		95.4%
4500-4999	359	3.6%		99.7%
4000-4499	75	0.8%		100.0%
3500-3999	21	0.2%		
3000-3499	4	0.0%		
2500-2999	0	0.0%		
<2500	0	0.0%		
Grand Total	9892	100%		

Prepared by: LAWA Noise Management

*Data source: LAX ANOMS

ANOMS Gate Penetration - DAHJR

June 1-30, 2019

Altitude MSL (ft)	Count of Ops*	% of Ops	% of Ops Between Altitudes	% of Ops At or Above Altitudes
>6300	642	6.8%		
6000-6299	2759	29.2%		
5700-5999	2985	31.6%	67.6%	
5500-5699	1138	12.1%	32.4%	
5000-5499	1398	14.8%		94.5%
4500-4999	420	4.4%		99.7%
4000-4499	74	0.8%		100.0%
3500-3999	14	0.1%		
3000-3499	9	0.1%		
2500-2999	1	0.0%		
<2500	0	0.0%		
Grand Total	9440	100%		

Prepared by: LAWA Noise Management

*Data source: LAX ANOMS

ANOMS Gate Penetration - DAHJR

August 1-31, 2019

Altitude MSL (ft)	Count of Ops*	% of Ops	% of Ops Between Altitudes	% of Ops At or Above Altitudes
>6300	698	7.1%		
6000-6299	2627	26.9%		
5700-5999	3108	31.8%	65.8%	
5500-5699	1275	13.0%	34.2%	
5000-5499	1551	15.9%		94.7%
4500-4999	417	4.3%		99.8%
4000-4499	88	0.9%		100.0%
3500-3999	14	0.1%		
3000-3499	1	0.0%		
2500-2999	0	0.0%		
<2500	1	0.0%		
Grand Total	9780	100%		

Prepared by: LAWA Noise Management

*Data source: LAX ANOMS

3. 6000 Foot Alt +/- 300 at DAHJR - 24 hours

ANOMS Gate Penetration - DAHJR
September 1-30, 2019

Altitude MSL (ft)	Count of Ops*	% of Ops	% of Ops Between Altitudes	% of Ops At or Above Altitudes
>6300	675	7.7%		
6000-6299	2178	25.0%		
5700-5999	2570	29.5%	62.2%	
5500-5699	1129	12.9%	37.8%	
5000-5499	1574	18.0%		93.1%
4500-4999	465	5.3%		
4000-4499	95	1.1%		99.6%
3500-3999	29	0.3%		
3000-3499	8	0.1%		100.0%
2500-2999	1	0.0%		
<2500	0	0.0%		100.0%
Grand Total	8724	100%		

Prepared by: LAWA Noise Management
*Data source: LAX ANOMS

ANOMS Gate Penetration - DAHJR
November 1-30, 2019

Altitude MSL (ft)	Count of Ops*	% of Ops	% of Ops Between Altitudes	% of Ops At or Above Altitudes
>6300	493	6.1%		
6000-6299	1780	22.0%		
5700-5999	2371	29.3%	57.3%	
5500-5699	1102	13.6%	42.7%	
5000-5499	1662	20.5%		91.5%
4500-4999	512	6.3%		
4000-4499	144	1.8%		99.6%
3500-3999	26	0.3%		
3000-3499	8	0.1%		100.0%
2500-2999	1	0.0%		
<2500	0	0.0%		100.0%
Grand Total	8099	100%		

Prepared by: LAWA Noise Management
*Data source: LAX ANOMS

ANOMS Gate Penetration - DAHJR
October 1-31, 2019

Altitude MSL (ft)	Count of Ops*	% of Ops	% of Ops Between Altitudes	% of Ops At or Above Altitudes
>6300	633	7.0%		
6000-6299	2070	23.0%		
5700-5999	2728	30.3%	60.3%	
5500-5699	1146	12.7%	39.7%	
5000-5499	1729	19.2%		92.3%
4500-4999	533	5.9%		
4000-4499	125	1.4%		99.6%
3500-3999	29	0.3%		
3000-3499	6	0.1%		100.0%
2500-2999	1	0.0%		
<2500	0	0.0%		100.0%
Grand Total	9000	100%		

Prepared by: LAWA Noise Management
*Data source: LAX ANOMS

ANOMS Gate Penetration - DAHJR
December 1-31, 2019

Altitude MSL (ft)	Count of Ops*	% of Ops	% of Ops Between Altitudes	% of Ops At or Above Altitudes
>6300	584	7.6%		
6000-6299	1752	22.9%		
5700-5999	2288	29.9%	60.5%	
5500-5699	995	13.0%	39.5%	
5000-5499	1325	17.3%		90.9%
4500-4999	509	6.7%		
4000-4499	131	1.7%		99.3%
3500-3999	39	0.5%		
3000-3499	15	0.2%		100.0%
2500-2999	2	0.0%		
<2500	1	0.0%		100.0%
Grand Total	7641	100%		

Prepared by: LAWA Noise Management
*Data source: LAX ANOMS

3. 6000 Foot Alt +/- 300 at DAHJR - 24 hours

ANOMS Gate Penetration - DAHJR

January 1-31, 2020

Altitude MSL (ft)	Count of Ops*	% of Ops	% of Ops Between Altitudes	% of Ops At or Above Altitudes
>6300	664	7.6%		
6000-6299	2141	24.5%		
5700-5999	2550	29.1%	61.2%	
5500-5699	1117	12.8%	38.8%	
5000-5499	1574	18.0%		92.0%
4500-4999	504	5.8%		
4000-4499	148	1.7%		99.4%
3500-3999	40	0.5%		
3000-3499	8	0.1%		100.0%
2500-2999	2	0.0%		
<2500	0	0.0%		100.0%
Grand Total	8748	100%		

Prepared by: LAWA Noise Management

*Data source: LAX ANOMS

ANOMS Gate Penetration - DAHJR

February 1-29, 2020

Altitude MSL (ft)	Count of Ops*	% of Ops	% of Ops Between Altitudes	% of Ops At or Above Altitudes
>6300	447	5.9%		
6000-6299	1535	20.2%		
5700-5999	2149	28.3%	54.4%	
5500-5699	1009	13.3%	45.6%	
5000-5499	1632	21.5%		89.2%
4500-4999	580	7.6%		
4000-4499	173	2.3%		99.1%
3500-3999	54	0.7%		
3000-3499	11	0.1%		100.0%
2500-2999	3	0.0%		
<2500	0	0.0%		100.0%
Grand Total	7593	100%		

Prepared by: LAWA Noise Management

*Data source: LAX ANOMS

ANOMS Gate Penetration - DAHJR

March 1-31, 2020

Altitude MSL (ft)	Count of Ops*	% of Ops	% of Ops Between Altitudes	% of Ops At or Above Altitudes
>6300	394	6.0%		
6000-6299	1313	19.9%		
5700-5999	1814	27.6%	53.5%	
5500-5699	848	12.9%	46.5%	
5000-5499	1363	20.7%		87.1%
4500-4999	549	8.3%		
4000-4499	213	3.2%		98.6%
3500-3999	58	0.9%		
3000-3499	22	0.3%		99.9%
2500-2999	6	0.1%		
<2500	3	0.0%		100.0%
Grand Total	6583	100%		

Prepared by: LAWA Noise Management

*Data source: LAX ANOMS

ANOMS Gate Penetration - DAHJR

April 1-30, 2020

Altitude MSL (ft)	Count of Ops*	% of Ops	% of Ops Between Altitudes	% of Ops At or Above Altitudes
>6300	140	6.2%		
6000-6299	545	24.2%		
5700-5999	527	23.4%	53.8%	
5500-5699	289	12.8%	46.2%	
5000-5499	454	20.2%		86.8%
4500-4999	169	7.5%		
4000-4499	79	3.5%		97.8%
3500-3999	34	1.5%		
3000-3499	11	0.5%		99.8%
2500-2999	4	0.2%		
<2500	0	0.0%		100.0%
Grand Total	2252	100%		

Prepared by: LAWA Noise Management

*Data source: LAX ANOMS

3. 6000 Foot Alt +/- 300 at DAHJR - 24 hours

ANOMS Gate Penetration - DAHJR
May 1-31, 2020

Altitude MSL (ft)	Count of Ops*	% of Ops	% of Ops Between Altitudes	% of Ops At or Above Altitudes
>6300	212	7.7%		
6000-6299	740	26.9%		
5700-5999	657	23.9%	58.5%	
5500-5699	335	12.2%	41.5%	
5000-5499	527	19.2%		89.8%
4500-4999	200	7.3%		
4000-4499	59	2.1%		99.2%
3500-3999	12	0.4%		
3000-3499	8	0.3%		100.0%
2500-2999	1	0.0%		
<2500	0	0.0%		100.0%
Grand Total	2751	100%		

Prepared by: LAWA Noise Management
*Data source: LAX ANOMS

ANOMS Gate Penetration - DAHJR
June 1-30, 2020

Altitude MSL (ft)	Count of Ops*	% of Ops	% of Ops Between Altitudes	% of Ops At or Above Altitudes
>6300	244	7.7%		
6000-6299	775	24.5%		
5700-5999	845	26.7%	58.8%	
5500-5699	400	12.6%	41.2%	
5000-5499	595	18.8%		90.2%
4500-4999	214	6.8%		
4000-4499	76	2.4%		99.4%
3500-3999	17	0.5%		
3000-3499	1	0.0%		100.0%
2500-2999	1	0.0%		
<2500	0	0.0%		100.0%
Grand Total	3168	100%		

Prepared by: LAWA Noise Management
*Data source: LAX ANOMS

ANOMS Gate Penetration - DAHJR
July 1-31, 2020

Altitude MSL (ft)	Count of Ops*	% of Ops	% of Ops Between Altitudes	% of Ops At or Above Altitudes
>6300	306	7.7%		
6000-6299	1096	27.5%		
5700-5999	1132	28.4%	63.5%	
5500-5699	502	12.6%	36.5%	
5000-5499	680	17.0%		93.2%
4500-4999	205	5.1%		
4000-4499	51	1.3%		99.6%
3500-3999	14	0.4%		
3000-3499	3	0.1%		100.0%
2500-2999	0	0.0%		
<2500	0	0.0%		100.0%
Grand Total	3989	100%		

Prepared by: LAWA Noise Management
*Data source: LAX ANOMS

ANOMS Gate Penetration - DAHJR
August 1-31, 2020

Altitude MSL (ft)	Count of Ops*	% of Ops	% of Ops Between Altitudes	% of Ops At or Above Altitudes
>6300	275	6.5%		
6000-6299	1048	24.6%		
5700-5999	1245	29.2%	60.2%	
5500-5699	567	13.3%	39.8%	
5000-5499	828	19.4%		93.0%
4500-4999	220	5.2%		
4000-4499	56	1.3%		99.4%
3500-3999	19	0.4%		
3000-3499	5	0.1%		100.0%
2500-2999	0	0.0%		
<2500	0	0.0%		100.0%
Grand Total	4263	100%		

Prepared by: LAWA Noise Management
*Data source: LAX ANOMS

3. 6000 Foot Alt +/- 300 at DAHJR - 24 hours

ANOMS Gate Penetration - DAHJR
September 1-30, 2020

Altitude MSL (ft)	Count of Ops*	% of Ops	% of Ops Between Altitudes	% of Ops At or Above Altitudes
>6300	222	5.2%		
6000-6299	974	23.0%		
5700-5999	1141	27.0%	55.2%	
5500-5699	564	13.3%	44.8%	
5000-5499	907	21.4%		90.0%
4500-4999	305	7.2%		
4000-4499	86	2.0%		99.2%
3500-3999	28	0.7%		
3000-3499	5	0.1%		100.0%
2500-2999	1	0.0%		
<2500	0	0.0%		100.0%
Grand Total	4233	100%		

Prepared by: LAWA Noise Management
*Data source: LAX ANOMS

ANOMS Gate Penetration - DAHJR
October 1-31, 2020

Altitude MSL (ft)	Count of Ops*	% of Ops	% of Ops Between Altitudes	% of Ops At or Above Altitudes
>6300	282	6.1%		
6000-6299	1104	23.7%		
5700-5999	1305	28.0%	57.8%	
5500-5699	583	12.5%	42.2%	
5000-5499	885	19.0%		89.4%
4500-4999	365	7.8%		
4000-4499	86	1.8%		99.1%
3500-3999	28	0.6%		
3000-3499	10	0.2%		99.9%
2500-2999	4	0.1%		
<2500	1	0.0%		100.0%
Grand Total	4653	100%		

Prepared by: LAWA Noise Management
*Data source: LAX ANOMS

4. DAHJR - 0100 to 0500 totals

Altitude MSL (ft)	Time of Night						Totals by Height
	12:00 to 12:59 AM	1:00 to 1:59 AM	2:00 to 2:59 AM	3:00 to 3:59 AM	4:00 to 4:59 AM	5:00 to 5:59 AM	
>6000	15	5	2	5	14	36	77
5750-6000	18	2	1	7	7	10	45
5500-5749	6	1	1	2	1	7	18
5250-5499	2	1	2	2	0	4	11
5000-5249	5	0	2	2	1	4	14
4750-4999	1	1	0	0	0	0	2
<4750	1	1	0	0	2	2	6
Total of All Flights	48	11	8	18	25	63	173
	1 to 5 Total			19			

Altitude MSL (ft)	Time of Night						Totals by Height
	12:00 to 12:59 AM	1:00 to 1:59 AM	2:00 to 2:59 AM	3:00 to 3:59 AM	4:00 to 4:59 AM	5:00 to 5:59 AM	
>6000	24	13	11	9	58	72	187
5750-6000	13	4	3	0	9	19	48
5500-5749	6	0	1	1	2	6	16
5250-5499	3	2	1	1	2	8	17
5000-5249	2	1	1	1	1	3	9
4750-4999	3	0	0	0	0	0	3
<4750	6	1	0	0	2	6	15
Total of All Flights	57	21	17	12	74	114	295
	1 to 5 Total			17			

Oct 2018
19 flights

Nov 2018
17 flights

4. DAHJR - 0100 to 0500 totals

Altitude MSL (ft)	Time of Night						Totals by Height
	12:00 to 12:59 AM	1:00 to 1:59 AM	2:00 to 2:59 AM	3:00 to 3:59 AM	4:00 to 4:59 AM	5:00 to 5:59 AM	
>6000	27	10	8	6	28	48	127
5750-6000	13	1	2	1	15	32	64
5500-5749	11	1	0	1	7	10	30
5250-5499	6	0	2	0	8	3	19
5000-5249	6	0	1	0	3	4	14
4750-4999	0	0	0	0	1	2	3
<4750	2	0	0	1	0	3	6
Total of All Flights	65	12	13	9	62	102	263
	1 to 5 Total		25				

Altitude MSL (ft)	Time of Night						Totals by Height
	12:00 to 12:59 AM	1:00 to 1:59 AM	2:00 to 2:59 AM	3:00 to 3:59 AM	4:00 to 4:59 AM	5:00 to 5:59 AM	
>6000	10	6	6	4	3	13	42
5750-6000	6	2	0	0	5	6	19
5500-5749	9	0	1	1	2	3	16
5250-5499	2	0	1	0	3	4	10
5000-5249	2	0	0	1	0	0	3
4750-4999	1	0	0	1	0	1	3
<4750	2	0	0	2	0	1	5
Total of All Flights	32	8	8	9	13	28	98
	1 to 5 Total		12				

Dec 2018
25 flights

Jan 2019
12 flights

4. DAHJR - 0100 to 0500 totals

Altitude MSL (ft)	Time of Night						Totals by Height
	12:00 to 12:59 AM	1:00 to 1:59 AM	2:00 to 2:59 AM	3:00 to 3:59 AM	4:00 to 4:59 AM	5:00 to 5:59 AM	
>6000	10	4	3	1	7	9	34
5750-6000	5	0	0	4	1	2	12
5500-5749	3	0	0	0	3	2	8
5250-5499	2	1	0	0	1	0	4
5000-5249	1	0	0	1	0	2	4
4750-4999	24	6	11	2	26	40	109
<4750	1	0	0	0	0	3	4
Total of All Flights	46	11	14	8	38	58	175
	1 to 5 Total		51				

Altitude MSL (ft)	Time of Night						Totals by Height
	12:00 to 12:59 AM	1:00 to 1:59 AM	2:00 to 2:59 AM	3:00 to 3:59 AM	4:00 to 4:59 AM	5:00 to 5:59 AM	
>6000	15	5	2	4	10	11	47
5750-6000	38	12	2	17	45	52	166
5500-5749	7	0	0	0	3	0	10
5250-5499	1	0	1	0	3	5	10
5000-5249	1	0	0	0	2	3	6
4750-4999	1	1	0	0	1	0	3
<4750	2	0	0	0	1	0	3
Total of All Flights	65	18	5	21	65	71	245
	1 to 5 Total		12				

Feb 2019
51 flights

Mar 2019
12 flights

4. DAHJR - 0100 to 0500 totals

Altitude MSL (ft)	Time of Night						Totals by Height
	12:59 AM	1:00 to 1:59 AM	2:00 to 2:59 AM	3:00 to 3:59 AM	4:00 to 4:59 AM	5:00 to 5:59 AM	
>6000	26	20	10	22	58	56	192
5750-6000	23	3	2	7	6	25	66
5500-5749	5	2	0	1	1	3	12
5250-5499	1	0	0	0	0	1	2
5000-5249	1	0	0	0	1	2	4
4750-4999	0	0	0	0	0	0	0
<4750	2	0	1	0	0	0	3
Total of All Flights	58	25	13	30	66	87	279
	1 to 5 Total		6				

Altitude MSL (ft)	Time of Night						Totals by Height
	12:00 to 12:59 AM	1:00 to 1:59 AM	2:00 to 2:59 AM	3:00 to 3:59 AM	4:00 to 4:59 AM	5:00 to 5:59 AM	
>6000	41	10	5	15	47	49	167
5750-6000	17	5	0	1	15	17	55
5500-5749	6	2	0	1	1	2	12
5250-5499	2	0	0	0	1	0	3
5000-5249	6	0	0	0	0	2	8
4750-4999	2	0	0	0	0	1	3
<4750	4	0	0	1	0	0	5
Total of All Flights	78	17	5	18	64	71	253
	1 to 5 Total		6				

Apr 2019
6 flights

May 2019
6 flights

4. DAHJR - 0100 to 0500 totals

Altitude MSL (ft)	Time of Night						Totals by Height
	12:00 to 12:59 AM	1:00 to 1:59 AM	2:00 to 2:59 AM	3:00 to 3:59 AM	4:00 to 4:59 AM	5:00 to 5:59 AM	
>6000	44	5	3	19	63	91	225
5750-6000	21	5	2	5	15	31	79
5500-5749	11	0	0	2	1	3	17
5250-5499	4	0	0	0	0	2	6
5000-5249	4	0	0	1	0	0	5
4750-4999	4	1	0	0	0	1	6
<4750	4	1	0	1	1	1	8
Total of All Flights	92	12	5	28	80	129	346
	1 to 5 Total		8				

Jun 2019
8 flights

Altitude MSL (ft)	Time of Night						Totals by Height
	12:00 to 12:59 AM	1:00 to 1:59 AM	2:00 to 2:59 AM	3:00 to 3:59 AM	4:00 to 4:59 AM	5:00 to 5:59 AM	
>6000	56	8	7	15	39	55	180
5750-6000	29	1	2	3	14	25	74
5500-5749	9	0	1	0	2	1	13
5250-5499	3	0	0	0	0	2	5
5000-5249	3	0	0	0	0	1	4
4750-4999	1	0	0	0	0	0	1
<4750	2	0	0	0	0	0	2
Total of All Flights	103	9	10	18	55	84	279
	1 to 5 Total		3				

Jul 2019
3 flights

4. DAHJR - 0100 to 0500 totals

Altitude MSL (ft)	Time of Night						Totals by Height
	12:00 to 12:59 AM	1:00 to 1:59 AM	2:00 to 2:59 AM	3:00 to 3:59 AM	4:00 to 4:59 AM	5:00 to 5:59 AM	
>6000	35	3	13	9	43	61	164
5750-6000	26	4	1	0	15	22	68
5500-5749	9	4	1	0	0	1	15
5250-5499	2	0	0	0	0	2	4
5000-5249	5	0	1	0	0	0	6
4750-4999	2	0	0	0	0	1	3
<4750	1	0	0	0	0	1	2
Total of All Flights	80	11	16	9	58	88	262
	1 to 5 Total		6				

Altitude MSL (ft)	Time of Night						Totals by Height
	12:00 to 12:59 AM	1:00 to 1:59 AM	2:00 to 2:59 AM	3:00 to 3:59 AM	4:00 to 4:59 AM	5:00 to 5:59 AM	
>6000	27	4	1	0	4	25	61
5750-6000	10	0	0	1	3	11	25
5500-5749	6	0	0	0	1	1	8
5250-5499	5	0	0	0	0	0	5
5000-5249	3	0	0	0	0	1	4
4750-4999	1	0	0	0	0	0	1
<4750	1	0	0	0	0	0	1
Total of All Flights	53	4	1	1	8	38	105
	1 to 5 Total		1				

Aug 2019
6 flights

Sep 2019
1 flight

4. DAHJR - 0100 to 0500 totals

Altitude MSL (ft)	Time of Night						Totals by Height
	12:00 to 12:59 AM	1:00 to 1:59 AM	2:00 to 2:59 AM	3:00 to 3:59 AM	4:00 to 4:59 AM	5:00 to 5:59 AM	
>6000	21	2	2	3	3	24	55
5750-6000	6	0	0	1	0	6	13
5500-5749	6	0	0	0	0	3	9
5250-5499	1	0	0	0	1	0	2
5000-5249	1	0	0	0	0	1	2
4750-4999	0	0	0	0	0	3	3
<4750	3	0	0	0	0	0	3
Total of All Flights	38	2	2	4	4	37	87
		1 to 5 Total		1			

Altitude MSL (ft)	Time of Night						Totals by Height
	12:00 to 12:59 AM	1:00 to 1:59 AM	2:00 to 2:59 AM	3:00 to 3:59 AM	4:00 to 4:59 AM	5:00 to 5:59 AM	
>6000	14	1	2	5	12	37	71
5750-6000	6	1	0	1	4	21	33
5500-5749	4	0	1	0	0	4	9
5250-5499	2	0	0	0	2	3	7
5000-5249	1	0	0	0	0	2	3
4750-4999	2	0	0	0	0	1	3
<4750	1	0	0	0	1	0	2
Total of All Flights	30	2	3	6	19	68	128
		1 to 5 Total		4			

Oct 2019
1 flight

Nov 2019
4 flights

4. DAHJR - 0100 to 0500 totals

Altitude MSL (ft)	Time of Night						Totals by Height
	12:00 to 12:59 AM	1:00 to 1:59 AM	2:00 to 2:59 AM	3:00 to 3:59 AM	4:00 to 4:59 AM	5:00 to 5:59 AM	
>6000	6	0	0	0	0	0	6
5750-6000	6	1	0	0	0	0	7
5500-5749	3	0	0	0	0	0	3
5250-5499	0	0	0	0	0	0	0
5000-5249	2	0	0	0	0	0	2
4750-4999	1	0	0	0	1	0	2
<4750	0	0	0	0	0	0	0
Total of All Flights	18	1	0	0	1	0	20
1 to 5 Total				1			

Altitude MSL (ft)	Time of Night						Totals by Height
	12:00 to 12:59 AM	1:00 to 1:59 AM	2:00 to 2:59 AM	3:00 to 3:59 AM	4:00 to 4:59 AM	5:00 to 5:59 AM	
>6000	11	2	11	10	25	54	113
5750-6000	7	0	2	3	5	32	49
5500-5749	4	3	1	1	1	8	18
5250-5499	1	0	0	1	2	0	4
5000-5249	1	0	0	0	1	4	6
4750-4999	0	1	1	0	0	2	4
<4750	3	1	0	0	0	1	5
Total of All Flights	27	7	15	15	34	101	199
1 to 5 Total				13			

Dec 2019
1 flight

Jan 2020
13 flights

4. DAHJR - 0100 to 0500 totals

Altitude MSL (ft)	Time of Night						Totals by Height
	12:00 to 12:59 AM	1:00 to 1:59 AM	2:00 to 2:59 AM	3:00 to 3:59 AM	4:00 to 4:59 AM	5:00 to 5:59 AM	
>6000	8	1	0	2	6	33	50
5750-6000	6	0	3	1	4	7	21
5500-5749	0	0	0	0	1	5	6
5250-5499	1	0	1	0	2	1	5
5000-5249	1	0	0	0	0	2	3
4750-4999	1	0	0	0	1	2	4
<4750	0	0	0	1	0	2	3
Total of All Flights	17	1	4	4	14	52	92
		1 to 5 Total		6			

Feb 2020
6 flights

Altitude MSL (ft)	Time of Night						Totals by Height
	12:00 to 12:59 AM	1:00 to 1:59 AM	2:00 to 2:59 AM	3:00 to 3:59 AM	4:00 to 4:59 AM	5:00 to 5:59 AM	
>6000	9	1	0	2	2	12	26
5750-6000	7	1	0	0	1	5	14
5500-5749	0	0	2	0	1	2	5
5250-5499	0	0	0	0	0	2	2
5000-5249	1	0	0	1	0	0	2
4750-4999	1	0	1	0	0	0	2
<4750	1	0	0	0	0	2	3
Total of All Flights	19	2	3	3	4	23	54
		1 to 5 Total		5			

Mar 2020
5 flights

4. DAHJR - 0100 to 0500 totals

Apr 2020
4 flights

Altitude MSL (ft)	Time of Night						Totals by Height
	12:00 to 12:59 AM	1:00 to 1:59 AM	2:00 to 2:59 AM	3:00 to 3:59 AM	4:00 to 4:59 AM	5:00 to 5:59 AM	
>6000	3	0	1	3	6	1	14
5750-6000	0	1	0	0	1	0	2
5500-5749	2	0	0	0	2	0	4
5250-5499	0	0	1	0	0	0	1
5000-5249	0	1	0	0	0	0	1
4750-4999	0	0	0	0	0	0	0
<4750	0	0	0	0	0	0	0
Total of All Flights	5	2	2	3	9	1	22
		1 to 5 Total		4			

May 2020
7 flights

Altitude MSL (ft)	Time of Night						Totals by Height
	12:00 to 12:59 AM	1:00 to 1:59 AM	2:00 to 2:59 AM	3:00 to 3:59 AM	4:00 to 4:59 AM	5:00 to 5:59 AM	
>6000	3	9	5	6	6	4	33
5750-6000	0	5	1	1	1	0	8
5500-5749	0	0	0	0	2	3	5
5250-5499	0	1	1	1	0	0	3
5000-5249	0	1	0	0	0	0	1
4750-4999	0	0	0	0	0	0	0
<4750	0	1	0	0	0	0	1
Total of All Flights	3	17	7	8	9	7	51
		1 to 5 Total		7			

4. DAHJR - 0100 to 0500 totals

Jun 2020
0 flights

Altitude MSL (ft)	Time of Night						Totals by Height
	12:00 to 12:59 AM	1:00 to 1:59 AM	2:00 to 2:59 AM	3:00 to 3:59 AM	4:00 to 4:59 AM	5:00 to 5:59 AM	
>6000	1	0	0	0	0	3	4
5750-6000	2	0	0	0	0	0	2
5500-5749	2	0	0	0	0	0	2
5250-5499	0	0	0	0	0	1	1
5000-5249	0	0	0	0	0	0	0
4750-4999	0	0	0	0	0	0	0
<4750	0	0	0	0	0	0	0
Total of All Flights	5	0	0	0	0	4	9
		1 to 5 Total		0			

Jul 2020
9 flights

Altitude MSL (ft)	Time of Night						Totals by Height
	12:00 to 12:59 AM	1:00 to 1:59 AM	2:00 to 2:59 AM	3:00 to 3:59 AM	4:00 to 4:59 AM	5:00 to 5:59 AM	
>6000	7	3	3	6	4	14	37
5750-6000	2	2	2	1	4	2	13
5500-5749	2	0	1	2	1	0	6
5250-5499	0	0	0	0	0	0	0
5000-5249	0	0	0	2	1	0	3
4750-4999	0	0	1	1	0	1	3
<4750	0	0	0	0	0	0	0
Total of All Flights	11	5	7	12	10	17	62
		1 to 5 Total		9			

4. DAHJR - 0100 to 0500 totals

Altitude MSL (ft)	Time of Night						Totals by Height
	12:00 to 12:59 AM	1:00 to 1:59 AM	2:00 to 2:59 AM	3:00 to 3:59 AM	4:00 to 4:59 AM	5:00 to 5:59 AM	
>6000	2	0	4	6	5	11	28
5750-6000	1	0	0	0	5	3	9
5500-5749	2	1	0	0	0	0	3
5250-5499	0	1	0	0	0	2	3
5000-5249	0	0	0	0	0	0	0
4750-4999	0	0	0	0	0	0	0
<4750	0	0	0	0	0	0	0
Total of All Flights	5	2	4	6	10	16	43
		1 to 5 Total		2			

Aug 2020
2 flights

Altitude MSL (ft)	Time of Night						Totals by Height
	12:00 to 12:59 AM	1:00 to 1:59 AM	2:00 to 2:59 AM	3:00 to 3:59 AM	4:00 to 4:59 AM	5:00 to 5:59 AM	
>6000	2	2	7	8	10	21	50
5750-6000	2	1	4	0	2	5	14
5500-5749	1	1	0	0	0	0	2
5250-5499	0	0	0	0	0	0	0
5000-5249	1	0	0	0	0	1	2
4750-4999	0	0	0	0	0	0	0
<4750	0	0	0	0	0	0	0
Total of All Flights	6	4	11	8	12	27	68
		1 to 5 Total		1			

Sep 2020
2 flights

4. DAHJR - 0100 to 0500 totals

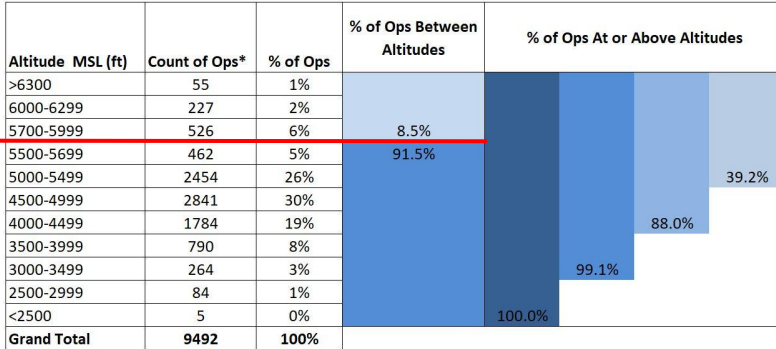
Altitude MSL (ft)	Time of Night						Totals by Height
	12:00 to 12:59 AM	1:00 to 1:59 AM	2:00 to 2:59 AM	3:00 to 3:59 AM	4:00 to 4:59 AM	5:00 to 5:59 AM	
>6000	7	3	2	7	9	37	65
5750-6000	1	3	0	5	2	7	18
5500-5749	0	1	2	0	0	2	5
5250-5499	0	0	0	1	0	2	3
5000-5249	0	0	0	0	0	3	3
4750-4999	0	0	1	1	0	1	3
<4750	0	0	0	0	0	2	2
Total of All Flights	8	7	5	14	11	54	99
		1 to 5 Total		6			

Oct 2020
6 flights

5. 6000 Foot Alt +/- 300 at GADDO - 24 hours

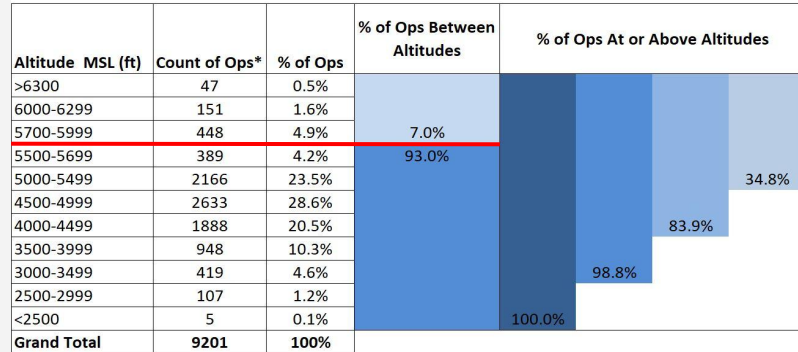
ANOMS Gate Penetration - GADDO

September 1-30, 2018



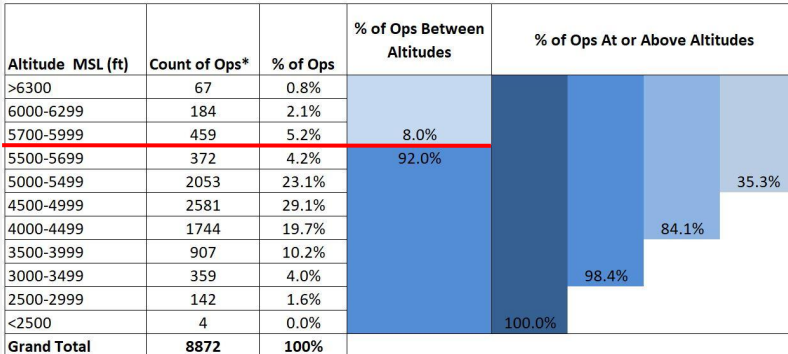
ANOMS Gate Penetration - GADDO

October 1-31, 2018



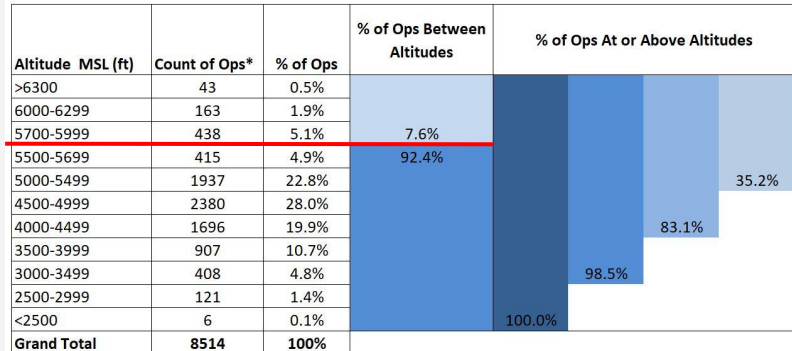
ANOMS Gate Penetration - GADDO

November 1-30, 2018



ANOMS Gate Penetration - GADDO

December 1-31, 2018



5. 6000 Foot Alt +/- 300 at GADDO - 24 hours

ANOMS Gate Penetration - GADDO
January 1-31, 2019

Altitude MSL (ft)	Count of Ops*	% of Ops	% of Ops Between Altitudes	% of Ops At or Above Altitudes
>6300	41	0.6%	93.2%	100.0%
6000-6299	120	1.6%		
5700-5999	335	4.6%		
5500-5699	320	4.4%		
5000-5499	1572	21.6%		
4500-4999	1992	27.4%		
4000-4499	1577	21.7%		
3500-3999	799	11.0%		
3000-3499	375	5.2%		
2500-2999	138	1.9%		
<2500	5	0.1%	81.9%	32.8%
Grand Total	7274	100%		

ANOMS Gate Penetration - GADDO
February 1-28, 2019

Altitude MSL (ft)	Count of Ops*	% of Ops	% of Ops Between Altitudes	% of Ops At or Above Altitudes
>6300	66	0.9%	91.4%	100.0%
6000-6299	156	2.0%		
5700-5999	437	5.7%		
5500-5699	440	5.7%		
5000-5499	1984	25.8%		
4500-4999	2145	27.9%		
4000-4499	1387	18.0%		
3500-3999	676	8.8%		
3000-3499	314	4.1%		
2500-2999	83	1.1%		
<2500	7	0.1%	86.0%	40.1%
Grand Total	7695	100%		

ANOMS Gate Penetration - GADDO
March 1-31, 2019

Altitude MSL (ft)	Count of Ops*	% of Ops	% of Ops Between Altitudes	% of Ops At or Above Altitudes
>6300	52	0.6%	93.2%	100.0%
6000-6299	154	1.7%		
5700-5999	397	4.5%		
5500-5699	413	4.6%		
5000-5499	2259	25.4%		
4500-4999	2531	28.4%		
4000-4499	1739	19.5%		
3500-3999	873	9.8%		
3000-3499	375	4.2%		
2500-2999	107	1.2%		
<2500	7	0.1%	84.7%	36.8%
Grand Total	8907	100%		

ANOMS Gate Penetration - GADDO
April 1-30, 2019

Altitude MSL (ft)	Count of Ops*	% of Ops	% of Ops Between Altitudes	% of Ops At or Above Altitudes
>6300	50	0.6%	92.2%	100.0%
6000-6299	162	1.8%		
5700-5999	490	5.4%		
5500-5699	435	4.8%		
5000-5499	2357	26.0%		
4500-4999	2629	29.0%		
4000-4499	1686	18.6%		
3500-3999	778	8.6%		
3000-3499	358	4.0%		
2500-2999	108	1.2%		
<2500	3	0.0%	86.2%	38.6%
Grand Total	9056	100%		

5. 6000 Foot Alt +/- 300 at GADDO - 24 hours

ANOMS Gate Penetration - GADDO
May 1-31, 2019

Altitude MSL (ft)	Count of Ops*	% of Ops	% of Ops Between Altitudes	% of Ops At or Above Altitudes
>6300	52	0.6%		
6000-6299	162	1.8%		
5700-5999	477	5.2%	7.5%	
5500-5699	463	5.0%	92.5%	
5000-5499	2306	25.0%		37.4%
4500-4999	2752	29.8%		
4000-4499	1703	18.4%		85.7%
3500-3999	820	8.9%		
3000-3499	350	3.8%		98.3%
2500-2999	143	1.5%		
<2500	11	0.1%		100.0%
Grand Total	9239	100%		

Prepared by: LAWA Noise Management
*Data source: LAX ANOMS

ANOMS Gate Penetration - GADDO
July 1-31, 2019

Altitude MSL (ft)	Count of Ops*	% of Ops	% of Ops Between Altitudes	% of Ops At or Above Altitudes
>6300	43	0.4%		
6000-6299	159	1.6%		
5700-5999	536	5.4%	7.5%	
5500-5699	511	5.2%	92.5%	
5000-5499	2886	29.2%		41.8%
4500-4999	3051	30.8%		
4000-4499	1741	17.6%		90.3%
3500-3999	678	6.9%		
3000-3499	231	2.3%		99.4%
2500-2999	55	0.6%		
<2500	0	0.0%		100.0%
Grand Total	9891	100%		

Prepared by: LAWA Noise Management
*Data source: LAX ANOMS

ANOMS Gate Penetration - GADDO
June 1-30, 2019

Altitude MSL (ft)	Count of Ops*	% of Ops	% of Ops Between Altitudes	% of Ops At or Above Altitudes
>6300	41	0.4%		
6000-6299	186	2.0%		
5700-5999	522	5.5%	7.9%	
5500-5699	457	4.8%	92.1%	
5000-5499	2734	29.0%		41.8%
4500-4999	2832	30.0%		
4000-4499	1651	17.5%		89.3%
3500-3999	698	7.4%		
3000-3499	238	2.5%		99.2%
2500-2999	73	0.8%		
<2500	5	0.1%		100.0%
Grand Total	9437	100%		

Prepared by: LAWA Noise Management
*Data source: LAX ANOMS

ANOMS Gate Penetration - GADDO
August 1-31, 2019

Altitude MSL (ft)	Count of Ops*	% of Ops	% of Ops Between Altitudes	% of Ops At or Above Altitudes
>6300	37	0.4%		
6000-6299	154	1.6%		
5700-5999	471	4.8%	6.8%	
5500-5699	472	4.8%	93.2%	
5000-5499	2731	27.9%		39.5%
4500-4999	3086	31.6%		
4000-4499	1782	18.2%		89.4%
3500-3999	737	7.5%		
3000-3499	252	2.6%		99.5%
2500-2999	49	0.5%		
<2500	2	0.0%		100.0%
Grand Total	9773	100%		

Prepared by: LAWA Noise Management
*Data source: LAX ANOMS

5. 6000 Foot Alt +/- 300 at GADDO - 24 hours

ANOMS Gate Penetration - GADDO
September 1-30, 2019

Altitude MSL (ft)	Count of Ops*	% of Ops	% of Ops Between Altitudes	% of Ops At or Above Altitudes
>6300	44	0.5%		
6000-6299	156	1.8%		
5700-5999	461	5.3%	7.6%	
5500-5699	466	5.3%	92.4%	
5000-5499	2232	25.6%		38.5%
4500-4999	2507	28.8%		
4000-4499	1682	19.3%		86.6%
3500-3999	781	9.0%		
3000-3499	310	3.6%		99.1%
2500-2999	74	0.8%		
<2500	7	0.1%		100.0%
Grand Total	8720	100%		

Prepared by: LAWA Noise Management
*Data source: LAX ANOMS

ANOMS Gate Penetration - GADDO
October 1-31, 2019

Altitude MSL (ft)	Count of Ops*	% of Ops	% of Ops Between Altitudes	% of Ops At or Above Altitudes
>6300	49	0.5%		
6000-6299	125	1.4%		
5700-5999	438	4.9%	6.8%	
5500-5699	370	4.1%	93.2%	
5000-5499	2041	22.7%		33.6%
4500-4999	2635	29.3%		
4000-4499	1881	20.9%		83.8%
3500-3999	917	10.2%		
3000-3499	435	4.8%		98.9%
2500-2999	96	1.1%		
<2500	7	0.1%		100.0%
Grand Total	8994	100%		

Prepared by: LAWA Noise Management
*Data source: LAX ANOMS

ANOMS Gate Penetration - GADDO
November 1-30, 2019

Altitude MSL (ft)	Count of Ops*	% of Ops	% of Ops Between Altitudes	% of Ops At or Above Altitudes
>6300	27	0.3%		
6000-6299	120	1.5%		
5700-5999	350	4.3%	6.1%	
5500-5699	308	3.8%	93.9%	
5000-5499	1759	21.7%		31.7%
4500-4999	2394	29.6%		
4000-4499	1721	21.3%		82.5%
3500-3999	919	11.4%		
3000-3499	394	4.9%		98.7%
2500-2999	98	1.2%		
<2500	5	0.1%		100.0%
Grand Total	8095	100%		

Prepared by: LAWA Noise Management
*Data source: LAX ANOMS

ANOMS Gate Penetration - GADDO
December 1-31, 2019

Altitude MSL (ft)	Count of Ops*	% of Ops	% of Ops Between Altitudes	% of Ops At or Above Altitudes
>6300	37	0.5%		
6000-6299	90	1.2%		
5700-5999	326	4.3%	5.9%	
5500-5699	323	4.2%	94.1%	
5000-5499	1878	24.6%		34.8%
4500-4999	2189	28.7%		
4000-4499	1513	19.8%		83.2%
3500-3999	768	10.1%		
3000-3499	383	5.0%		98.3%
2500-2999	118	1.5%		
<2500	11	0.1%		100.0%
Grand Total	7636	100%		

Prepared by: LAWA Noise Management
*Data source: LAX ANOMS

5. 6000 Foot Alt +/- 300 at GADDO - 24 hours

ANOMS Gate Penetration - GADDO

January 1-31, 2020

Altitude MSL (ft)	Count of Ops*	% of Ops	% of Ops Between Altitudes	% of Ops At or Above Altitudes
>6300	50	0.6%	93.4%	35.5%
6000-6299	133	1.5%		
5700-5999	396	4.5%		
5500-5699	399	4.6%		
5000-5499	2124	24.3%		
4500-4999	2482	28.4%		
4000-4499	1771	20.3%		
3500-3999	874	10.0%		
3000-3499	385	4.4%		
2500-2999	121	1.4%		
<2500	8	0.1%	100.0%	84.1%
Grand Total	8743	100%		

Prepared by: LAWA Noise Management

*Data source: LAX ANOMS

ANOMS Gate Penetration - GADDO

February 1-29, 2020

Altitude MSL (ft)	Count of Ops*	% of Ops	% of Ops Between Altitudes	% of Ops At or Above Altitudes
>6300	35	0.5%	94.6%	29.4%
6000-6299	88	1.2%		
5700-5999	287	3.8%		
5500-5699	276	3.6%		
5000-5499	1546	20.3%		
4500-4999	2175	28.6%		
4000-4499	1678	22.1%		
3500-3999	936	12.3%		
3000-3499	441	5.8%		
2500-2999	132	1.7%		
<2500	10	0.1%	100.0%	80.0%
Grand Total	7604	100%		

Prepared by: LAWA Noise Management

*Data source: LAX ANOMS

ANOMS Gate Penetration - GADDO

March 1-31, 2020

Altitude MSL (ft)	Count of Ops*	% of Ops	% of Ops Between Altitudes	% of Ops At or Above Altitudes
>6300	18	0.3%	94.8%	27.8%
6000-6299	86	1.3%		
5700-5999	235	3.6%		
5500-5699	224	3.4%		
5000-5499	1261	19.2%		
4500-4999	1699	25.9%		
4000-4499	1439	21.9%		
3500-3999	873	13.3%		
3000-3499	534	8.1%		
2500-2999	180	2.7%		
<2500	22	0.3%	100.0%	75.5%
Grand Total	6571	100%		

Prepared by: LAWA Noise Management

*Data source: LAX ANOMS

ANOMS Gate Penetration - GADDO

April 1-30, 2020

Altitude MSL (ft)	Count of Ops*	% of Ops	% of Ops Between Altitudes	% of Ops At or Above Altitudes
>6300	13	0.6%	92.6%	33.8%
6000-6299	37	1.7%		
5700-5999	116	5.2%		
5500-5699	98	4.4%		
5000-5499	492	22.0%		
4500-4999	512	22.9%		
4000-4499	462	20.6%		
3500-3999	279	12.5%		
3000-3499	152	6.8%		
2500-2999	67	3.0%		
<2500	11	0.5%	100.0%	77.3%
Grand Total	2239	100%		

Prepared by: LAWA Noise Management

*Data source: LAX ANOMS

5. 6000 Foot Alt +/- 300 at GADDO - 24 hours

ANOMS Gate Penetration - GADDO
May 1-31, 2020

Altitude MSL (ft)	Count of Ops*	% of Ops	% of Ops Between Altitudes	% of Ops At or Above Altitudes
>6300	24	0.9%	7.9%	38.3%
6000-6299	56	2.0%		
5700-5999	137	5.0%		
5500-5699	145	5.3%		
5000-5499	687	25.1%		
4500-4999	656	23.9%		
4000-4499	548	20.0%		
3500-3999	309	11.3%		
3000-3499	138	5.0%		
2500-2999	39	1.4%		
<2500	5	0.1%	100.0%	98.5%
Grand Total	2742	100%		

Prepared by: LAWA Noise Management
*Data source: LAX ANOMS

ANOMS Gate Penetration - GADDO
July 1-31, 2020

Altitude MSL (ft)	Count of Ops*	% of Ops	% of Ops Between Altitudes	% of Ops At or Above Altitudes
>6300	31	0.8%	8.6%	40.3%
6000-6299	84	2.1%		
5700-5999	226	5.7%		
5500-5699	199	5.0%		
5000-5499	1065	26.7%		
4500-4999	1092	27.4%		
4000-4499	733	18.4%		
3500-3999	355	8.9%		
3000-3499	151	3.8%		
2500-2999	43	1.1%		
<2500	3	0.1%	100.0%	98.8%
Grand Total	3982	100%		

Prepared by: LAWA Noise Management
*Data source: LAX ANOMS

ANOMS Gate Penetration - GADDO
June 1-30, 2020

Altitude MSL (ft)	Count of Ops*	% of Ops	% of Ops Between Altitudes	% of Ops At or Above Altitudes
>6300	27	0.9%	8.3%	35.6%
6000-6299	59	1.9%		
5700-5999	175	5.5%		
5500-5699	137	4.3%		
5000-5499	725	23.0%		
4500-4999	823	26.1%		
4000-4499	650	20.6%		
3500-3999	362	11.5%		
3000-3499	154	4.9%		
2500-2999	43	1.4%		
<2500	1	0.0%	100.0%	98.6%
Grand Total	3156	100%		

Prepared by: LAWA Noise Management
*Data source: LAX ANOMS

ANOMS Gate Penetration - GADDO
August 1-31, 2020

Altitude MSL (ft)	Count of Ops*	% of Ops	% of Ops Between Altitudes	% of Ops At or Above Altitudes
>6300	37	0.9%	7.5%	34.6%
6000-6299	86	2.0%		
5700-5999	195	4.6%		
5500-5699	157	3.7%		
5000-5499	997	23.4%		
4500-4999	1208	28.4%		
4000-4499	896	21.0%		
3500-3999	454	10.7%		
3000-3499	180	4.2%		
2500-2999	44	1.0%		
<2500	5	0.1%	100.0%	98.8%
Grand Total	4259	100%		

Prepared by: LAWA Noise Management
*Data source: LAX ANOMS

5. 6000 Foot Alt +/- 300 at GADDO - 24 hours

ANOMS Gate Penetration - GADDO
September 1-30, 2020

Altitude MSL (ft)	Count of Ops*	% of Ops	% of Ops Between Altitudes	% of Ops At or Above Altitudes	
>6300	13	0.3%	6.0%	94.0%	29.7%
6000-6299	65	1.5%			
5700-5999	175	4.1%			
5500-5699	165	3.9%			
5000-5499	839	19.8%			
4500-4999	1113	26.3%			
4000-4499	1001	23.7%			
3500-3999	509	12.0%			
3000-3499	252	6.0%			
2500-2999	87	2.1%			
<2500	9	0.2%	100.0%	97.7%	79.7%
Grand Total	4228	100%			

Prepared by: LAWA Noise Management

*Data source: LAX ANOMS

ANOMS Gate Penetration - GADDO
October 1-31, 2020

Altitude MSL (ft)	Count of Ops*	% of Ops	% of Ops Between Altitudes	% of Ops At or Above Altitudes	
>6300	24	0.5%	6.8%	93.2%	32.5%
6000-6299	74	1.6%			
5700-5999	217	4.7%			
5500-5699	188	4.1%			
5000-5499	1005	21.7%			
4500-4999	1238	26.7%			
4000-4499	1006	21.7%			
3500-3999	537	11.6%			
3000-3499	250	5.4%			
2500-2999	95	2.0%			
<2500	7	0.2%	100.0%	97.8%	80.8%
Grand Total	4641	100%			

Prepared by: LAWA Noise Management

*Data source: LAX ANOMS

6. Quiet Skies LA - Option B Study

- At the July Roundtable we all discussed what the next steps were regarding Option B that Quiet Skies LA proposed as alternate flight procedures (in height and path) to reduce low-flying North Downwind flights over City of LA, Culver City, etc.
- In July, the RT agreed to a modification of the bylaws that allows our body to put forth a proposal for the FAA to study Option 3
- Details and analysis of that Option B are not yet ready for action by this body, but should be soon



THANK YOU