
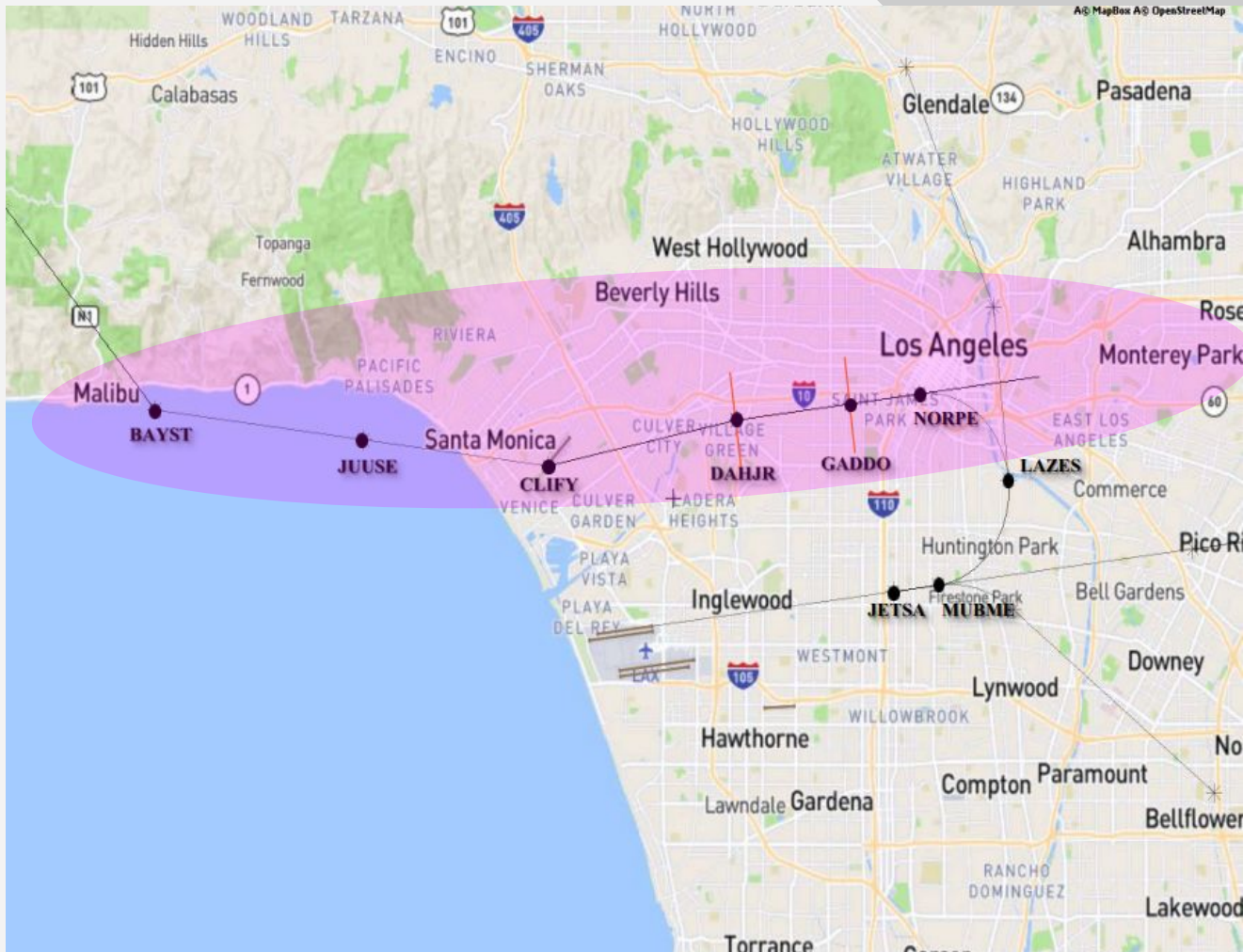




LAX Metroplex / Wide Area Ad Hoc Committee

LAX Community Noise Roundtable
Mar 2022

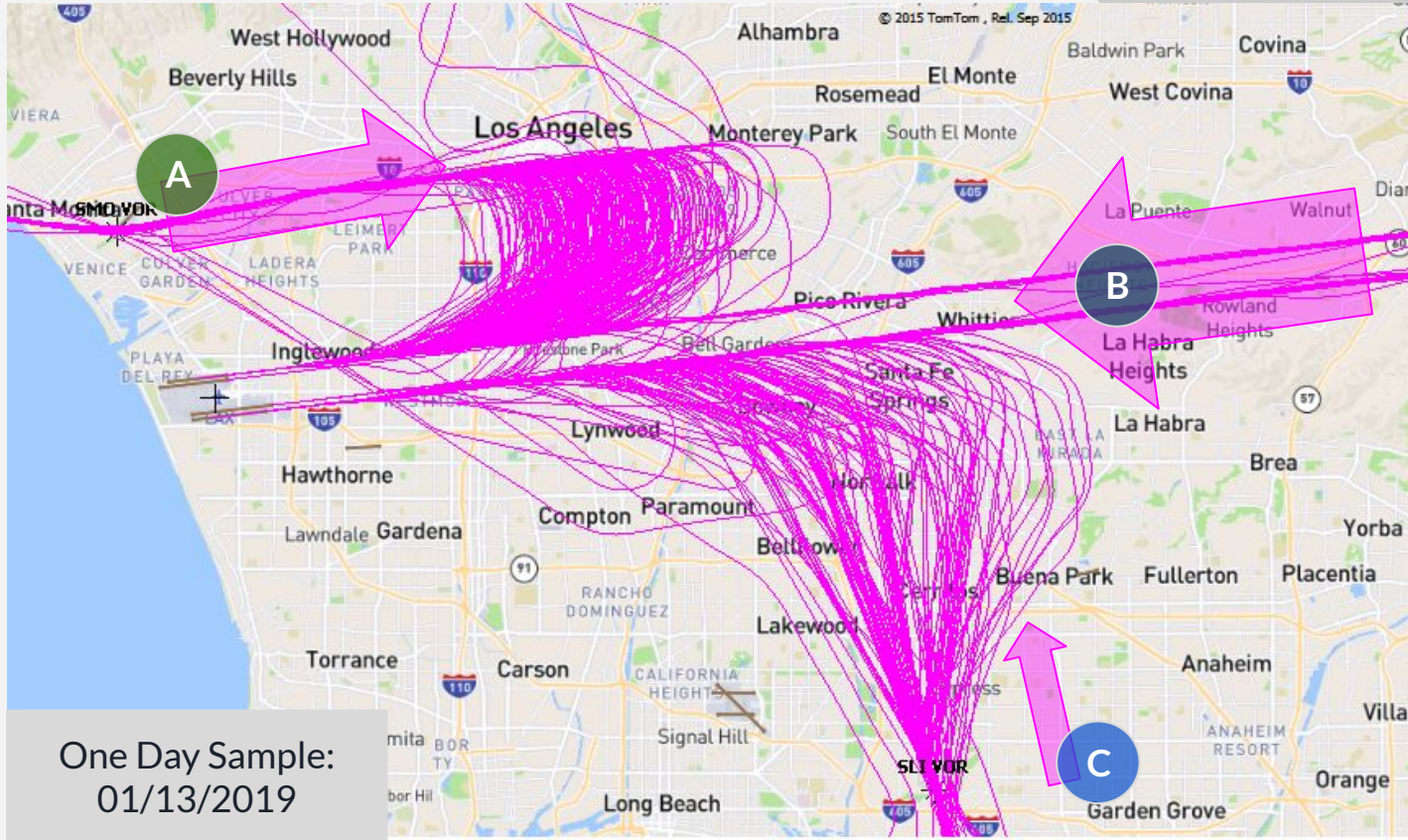
- 
1. North Downwind Arrival Flight Paths
 2. LAX and Other Airports
 3. DAHJR Flight Data - 24 hours
 4. DAHJR - 0100 to 0500 hours
 5. GADDO Flight Data - 24 hours
 6. Update on JUUSE, Option B, LADYJ



1. North Downwind Arrival Flight Paths

Area in pink affected by North Downwind Arrival and has been studied more extensively in prior and current initiatives undertaken by the Metroplex Ad Hoc Committee of the LAX Community Noise Roundtable

1. North Downwind Arrival Flight Paths - Merges



Percentage breakout of flights landing including their origin paths from one day at LAX

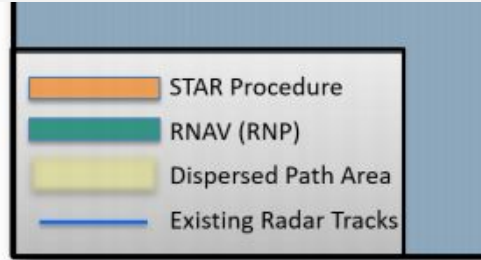
A North Arrivals
36% of inbound air traffic

B East Arrivals
52% of inbound air traffic

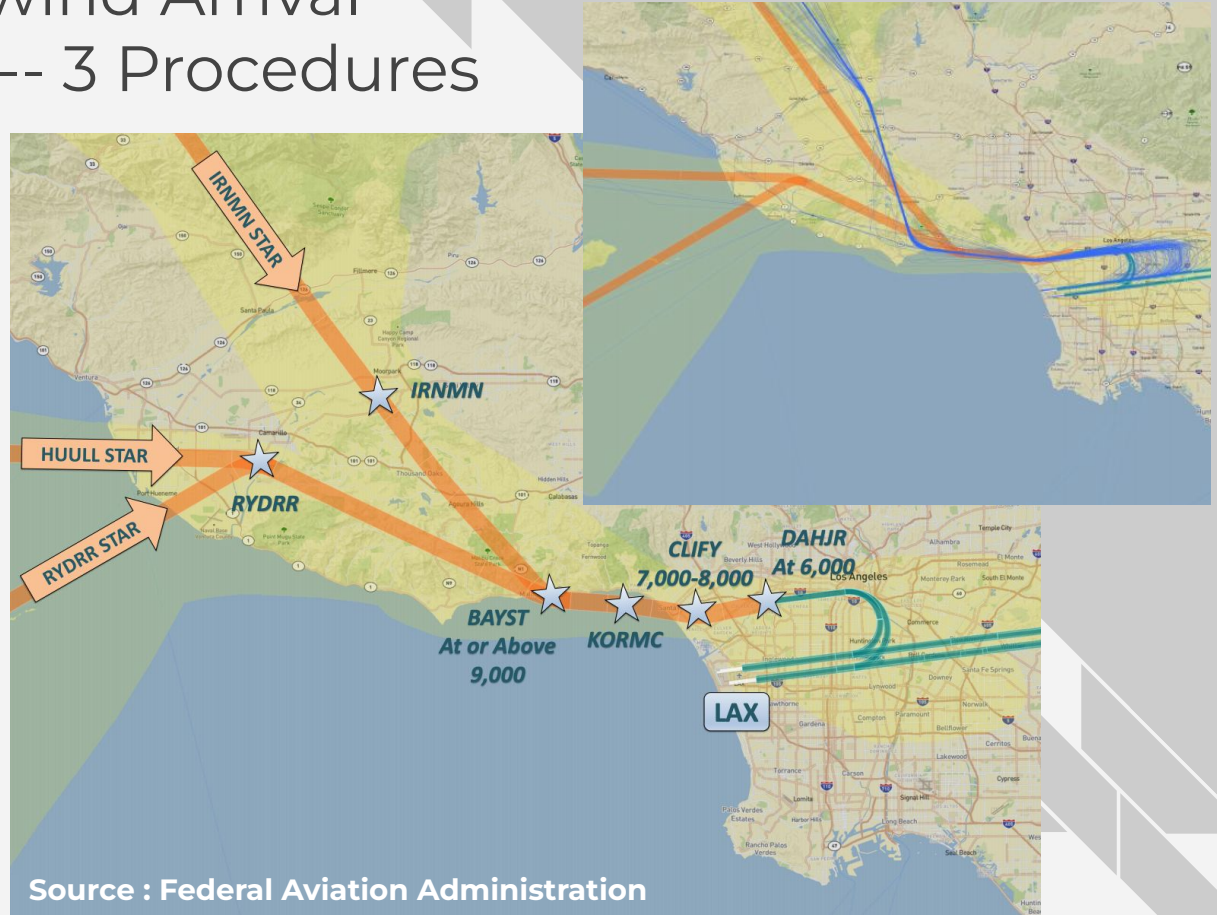
C South Arrivals
12% of inbound air traffic

One Day Sample:
01/13/2019

1. North Downwind Arrival Flight Paths -- 3 Procedures

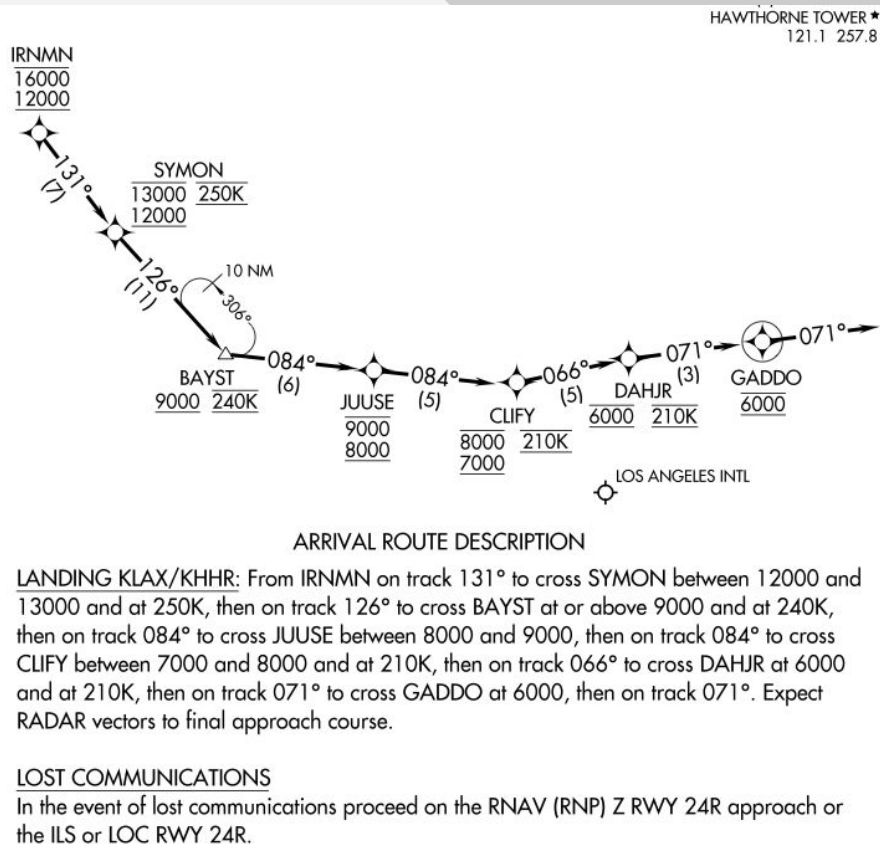
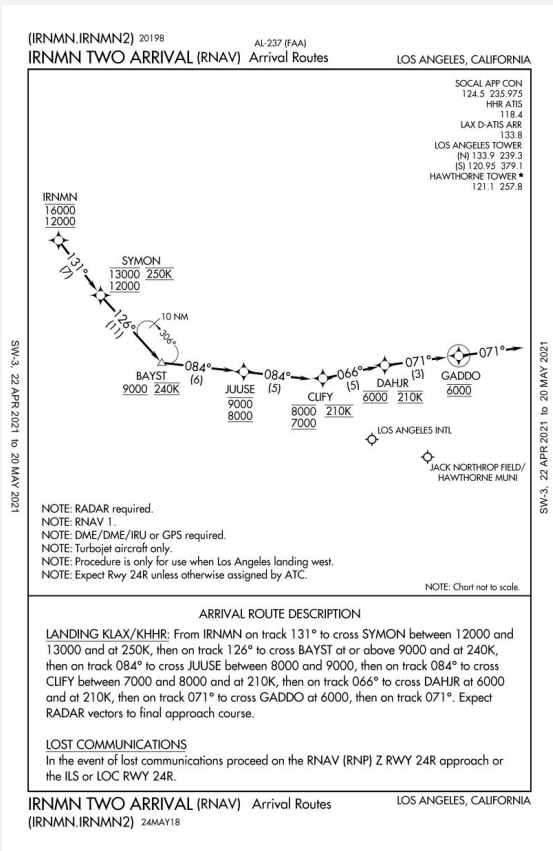


RYDRR, HUULL, & IRNMN are the 3 North Downwind Arrival Flight Paths into LAX

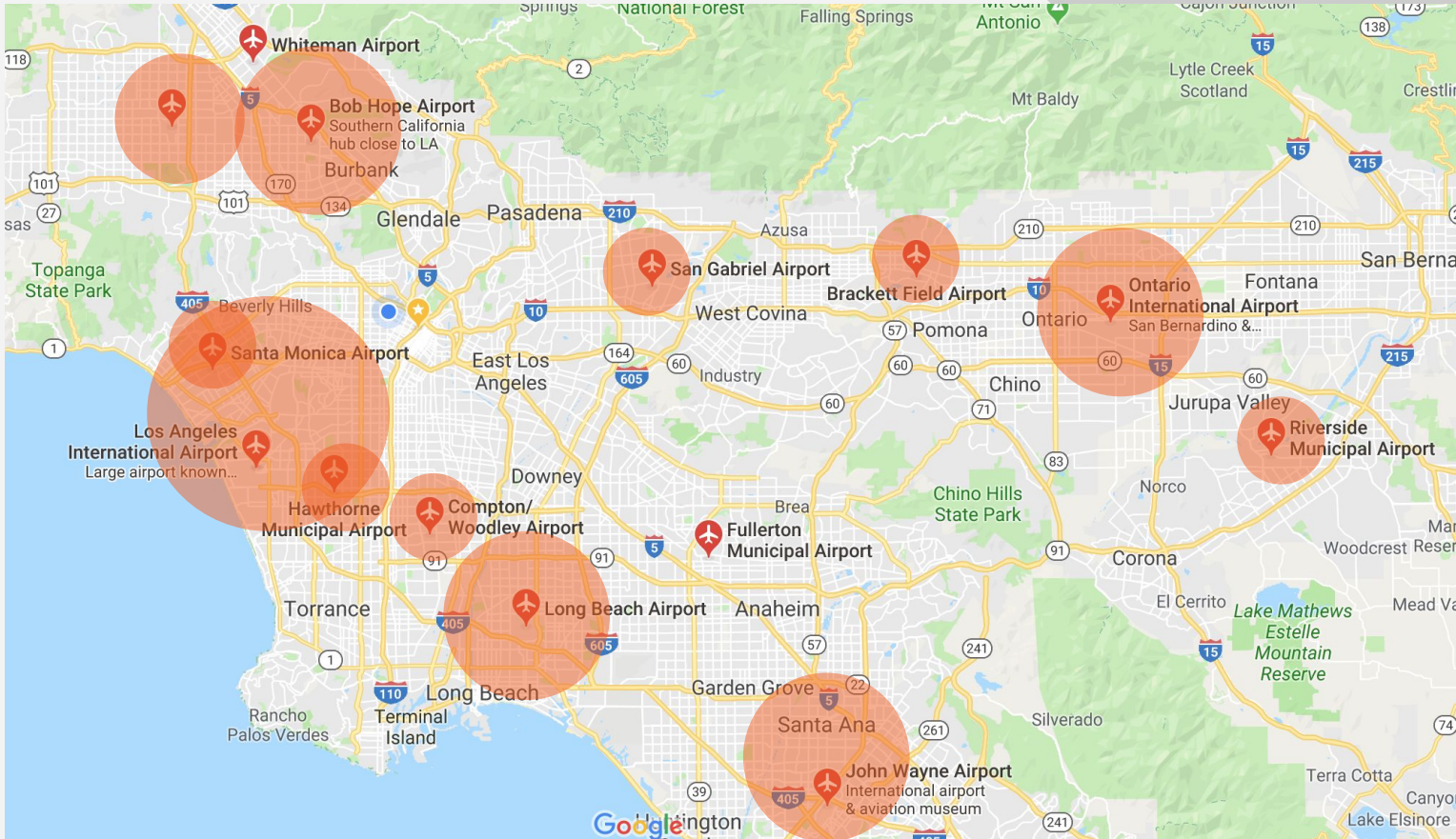


Source : Federal Aviation Administration

1. North Downwind Arrival Flight Paths - IRNMN



2. LAX and Other Airports



3. 6000 Foot Alt +/- 300 at DAHJR - 24 hours

ANOMS Gate Penetration - DAHJR

January 1-31, 2020

Altitude MSL (ft)	Count of Ops*	% of Ops	% of Ops Between Altitudes	% of Ops At or Above Altitudes
>6300	664	7.6%		
6000-6299	2141	24.5%		
5700-5999	2550	29.1%	61.2%	
5500-5699	1117	12.8%	38.8%	
5000-5499	1574	18.0%		92.0%
4500-4999	504	5.8%		
4000-4499	148	1.7%		99.4%
3500-3999	40	0.5%		
3000-3499	8	0.1%		100.0%
2500-2999	2	0.0%		
<2500	0	0.0%		100.0%
Grand Total	8748	100%		

Prepared by: LAWA Noise Management

*Data source: LAX ANOMS

ANOMS Gate Penetration - DAHJR

February 1-29, 2020

Altitude MSL (ft)	Count of Ops*	% of Ops	% of Ops Between Altitudes	% of Ops At or Above Altitudes
>6300	447	5.9%		
6000-6299	1535	20.2%		
5700-5999	2149	28.3%	54.4%	
5500-5699	1009	13.3%	45.6%	
5000-5499	1632	21.5%		89.2%
4500-4999	580	7.6%		
4000-4499	173	2.3%		99.1%
3500-3999	54	0.7%		
3000-3499	11	0.1%		100.0%
2500-2999	3	0.0%		
<2500	0	0.0%		100.0%
Grand Total	7593	100%		

Prepared by: LAWA Noise Management

*Data source: LAX ANOMS

ANOMS Gate Penetration - DAHJR

March 1-31, 2020

Altitude MSL (ft)	Count of Ops*	% of Ops	% of Ops Between Altitudes	% of Ops At or Above Altitudes
>6300	394	6.0%		
6000-6299	1313	19.9%		
5700-5999	1814	27.6%	53.5%	
5500-5699	848	12.9%	46.5%	
5000-5499	1363	20.7%		87.1%
4500-4999	549	8.3%		
4000-4499	213	3.2%		98.6%
3500-3999	58	0.9%		
3000-3499	22	0.3%		99.9%
2500-2999	6	0.1%		
<2500	3	0.0%		100.0%
Grand Total	6583	100%		

Prepared by: LAWA Noise Management

*Data source: LAX ANOMS

ANOMS Gate Penetration - DAHJR

April 1-30, 2020

Altitude MSL (ft)	Count of Ops*	% of Ops	% of Ops Between Altitudes	% of Ops At or Above Altitudes
>6300	140	6.2%		
6000-6299	545	24.2%		
5700-5999	527	23.4%	53.8%	
5500-5699	289	12.8%	46.2%	
5000-5499	454	20.2%		86.8%
4500-4999	169	7.5%		
4000-4499	79	3.5%		97.8%
3500-3999	34	1.5%		
3000-3499	11	0.5%		99.8%
2500-2999	4	0.2%		
<2500	0	0.0%		100.0%
Grand Total	2252	100%		

Prepared by: LAWA Noise Management

*Data source: LAX ANOMS

3. 6000 Foot Alt +/- 300 at DAHJR - 24 hours

ANOMS Gate Penetration - DAHJR
May 1-31, 2020

Altitude MSL (ft)	Count of Ops*	% of Ops	% of Ops Between Altitudes	% of Ops At or Above Altitudes
>6300	212	7.7%		
6000-6299	740	26.9%		
5700-5999	657	23.9%	58.5%	
5500-5699	335	12.2%	41.5%	
5000-5499	527	19.2%		89.8%
4500-4999	200	7.3%		
4000-4499	59	2.1%		99.2%
3500-3999	12	0.4%		
3000-3499	8	0.3%		100.0%
2500-2999	1	0.0%		
<2500	0	0.0%		100.0%
Grand Total	2751	100%		

Prepared by: LAWA Noise Management
*Data source: LAX ANOMS

ANOMS Gate Penetration - DAHJR
June 1-30, 2020

Altitude MSL (ft)	Count of Ops*	% of Ops	% of Ops Between Altitudes	% of Ops At or Above Altitudes
>6300	244	7.7%		
6000-6299	775	24.5%		
5700-5999	845	26.7%	58.8%	
5500-5699	400	12.6%	41.2%	
5000-5499	595	18.8%		90.2%
4500-4999	214	6.8%		
4000-4499	76	2.4%		99.4%
3500-3999	17	0.5%		
3000-3499	1	0.0%		100.0%
2500-2999	1	0.0%		
<2500	0	0.0%		100.0%
Grand Total	3168	100%		

Prepared by: LAWA Noise Management
*Data source: LAX ANOMS

ANOMS Gate Penetration - DAHJR
July 1-31, 2020

Altitude MSL (ft)	Count of Ops*	% of Ops	% of Ops Between Altitudes	% of Ops At or Above Altitudes
>6300	306	7.7%		
6000-6299	1096	27.5%		
5700-5999	1132	28.4%	63.5%	
5500-5699	502	12.6%	36.5%	
5000-5499	680	17.0%		93.2%
4500-4999	205	5.1%		
4000-4499	51	1.3%		99.6%
3500-3999	14	0.4%		
3000-3499	3	0.1%		100.0%
2500-2999	0	0.0%		
<2500	0	0.0%		100.0%
Grand Total	3989	100%		

Prepared by: LAWA Noise Management
*Data source: LAX ANOMS

ANOMS Gate Penetration - DAHJR
August 1-31, 2020

Altitude MSL (ft)	Count of Ops*	% of Ops	% of Ops Between Altitudes	% of Ops At or Above Altitudes
>6300	275	6.5%		
6000-6299	1048	24.6%		
5700-5999	1245	29.2%	60.2%	
5500-5699	567	13.3%	39.8%	
5000-5499	828	19.4%		93.0%
4500-4999	220	5.2%		
4000-4499	56	1.3%		99.4%
3500-3999	19	0.4%		
3000-3499	5	0.1%		100.0%
2500-2999	0	0.0%		
<2500	0	0.0%		100.0%
Grand Total	4263	100%		

Prepared by: LAWA Noise Management
*Data source: LAX ANOMS

3. 6000 Foot Alt +/- 300 at DAHJR - 24 hours

ANOMS Gate Penetration - DAHJR
September 1-30, 2020

Altitude MSL (ft)	Count of Ops*	% of Ops	% of Ops Between Altitudes	% of Ops At or Above Altitudes
>6300	222	5.2%	55.2%	90.0%
6000-6299	974	23.0%		
5700-5999	1141	27.0%		
5500-5699	564	13.3%		
5000-5499	907	21.4%		
4500-4999	305	7.2%		
4000-4499	86	2.0%		
3500-3999	28	0.7%		
3000-3499	5	0.1%		
2500-2999	1	0.0%		
<2500	0	0.0%	100.0%	
Grand Total	4233	100%		

Prepared by: LAWA Noise Management
*Data source: LAX ANOMS

ANOMS Gate Penetration - DAHJR
October 1-31, 2020

Altitude MSL (ft)	Count of Ops*	% of Ops	% of Ops Between Altitudes	% of Ops At or Above Altitudes
>6300	282	6.1%	57.8%	89.4%
6000-6299	1104	23.7%		
5700-5999	1305	28.0%		
5500-5699	583	12.5%		
5000-5499	885	19.0%		
4500-4999	365	7.8%		
4000-4499	86	1.8%		
3500-3999	28	0.6%		
3000-3499	10	0.2%		
2500-2999	4	0.1%		
<2500	1	0.0%	100.0%	
Grand Total	4653	100%		

Prepared by: LAWA Noise Management
*Data source: LAX ANOMS

ANOMS Gate Penetration - DAHJR
November 1-30, 2020

Altitude MSL (ft)	Count of Ops*	% of Ops	% of Ops Between Altitudes	% of Ops At or Above Altitudes
>6300	353	7.5%	54.1%	88.8%
6000-6299	969	20.5%		
5700-5999	1232	26.1%		
5500-5699	660	14.0%		
5000-5499	977	20.7%		
4500-4999	363	7.7%		
4000-4499	124	2.6%		
3500-3999	30	0.6%		
3000-3499	10	0.2%		
2500-2999	3	0.1%		
<2500	0	0.0%	100.0%	
Grand Total	4721	100%		

Prepared by: LAWA Noise Management
*Data source: LAX ANOMS

ANOMS Gate Penetration - DAHJR
December 1-31, 2020

Altitude MSL (ft)	Count of Ops*	% of Ops	% of Ops Between Altitudes	% of Ops At or Above Altitudes
>6300	235	5.1%	47.4%	84.4%
6000-6299	797	17.4%		
5700-5999	1134	24.8%		
5500-5699	610	13.3%		
5000-5499	1081	23.6%		
4500-4999	496	10.8%		
4000-4499	160	3.5%		
3500-3999	35	0.8%		
3000-3499	20	0.4%		
2500-2999	4	0.1%		
<2500	0	0.0%	100.0%	
Grand Total	4572	100%		

Prepared by: LAWA Noise Management
*Data source: LAX ANOMS

3. 6000 Foot Alt +/- 300 at DAHJR - 24 hours

ANOMS Gate Penetration - DAHJR
January 1-31, 2021

Altitude MSL (ft)	Count of Ops*	% of Ops	% of Ops Between Altitudes	% of Ops At or Above Altitudes
>6300	224	5.4%	50.1%	86.8%
6000-6299	799	19.1%		
5700-5999	1073	25.6%		
5500-5699	615	14.7%		
5000-5499	924	22.1%		
4500-4999	360	8.6%		
4000-4499	114	2.7%		
3500-3999	45	1.1%		
3000-3499	25	0.6%		
2500-2999	6	0.1%		
<2500	1	0.0%	100.0%	98.2%
Grand Total	4186	100%		

Prepared by: LAWA Noise Management
*Data source: LAX ANOMS

ANOMS Gate Penetration - DAHJR
February 1-28, 2021

Altitude MSL (ft)	Count of Ops*	% of Ops	% of Ops Between Altitudes	% of Ops At or Above Altitudes
>6300	263	6.2%	52.1%	88.2%
6000-6299	797	18.9%		
5700-5999	1139	27.0%		
5500-5699	576	13.6%		
5000-5499	950	22.5%		
4500-4999	338	8.0%		
4000-4499	118	2.8%		
3500-3999	30	0.7%		
3000-3499	10	0.2%		
2500-2999	2	0.0%		
<2500	1	0.0%	100.0%	99.0%
Grand Total	4224	100%		

Prepared by: LAWA Noise Management
*Data source: LAX ANOMS

ANOMS Gate Penetration - DAHJR
March 1-31, 2021

Altitude MSL (ft)	Count of Ops*	% of Ops	% of Ops Between Altitudes	% of Ops At or Above Altitudes
>6300	249	5.8%	51.9%	87.7%
6000-6299	865	20.0%		
5700-5999	1129	26.1%		
5500-5699	564	13.0%		
5000-5499	982	22.7%		
4500-4999	376	8.7%		
4000-4499	114	2.6%		
3500-3999	34	0.8%		
3000-3499	5	0.1%		
2500-2999	4	0.1%		
<2500	0	0.0%	100.0%	99.9%
Grand Total	4322	100%		

Prepared by: LAWA Noise Management
*Data source: LAX ANOMS

ANOMS Gate Penetration - DAHJR
April 1-30, 2021

Altitude MSL (ft)	Count of Ops*	% of Ops	% of Ops Between Altitudes	% of Ops At or Above Altitudes
>6300	305	6.5%	54.5%	90.4%
6000-6299	1062	22.5%		
5700-5999	1209	25.6%		
5500-5699	652	13.8%		
5000-5499	1044	22.1%		
4500-4999	335	7.1%		
4000-4499	90	1.9%		
3500-3999	25	0.5%		
3000-3499	4	0.1%		
2500-2999	1	0.0%		
<2500	0	0.0%	100.0%	99.4%
Grand Total	4727	100%		

Prepared by: LAWA Noise Management
*Data source: LAX ANOMS

3. 6000 Foot Alt +/- 300 at DAHJR - 24 hours

ANOMS Gate Penetration - DAHJR

May 1-31, 2021

Altitude MSL (ft)	Count of Ops*	% of Ops	% of Ops Between Altitudes	% of Ops At or Above Altitudes
>6300	289	5.0%		
6000-6299	1126	19.6%		
5700-5999	1624	28.3%	53.0%	
5500-5699	867	15.1%	47.0%	
5000-5499	1271	22.2%		90.2%
4500-4999	427	7.4%		
4000-4499	99	1.7%		99.4%
3500-3999	25	0.4%		
3000-3499	5	0.1%		99.9%
2500-2999	3	0.1%		
<2500	1	0.0%		100.0%
Grand Total	5737	100%		

Prepared by: LAWA Noise Management

*Data source: LAX ANOMS

ANOMS Gate Penetration - DAHJR

Jun 1-30, 2021

Altitude MSL (ft)	Count of Ops*	% of Ops	% of Ops Between Altitudes	% of Ops At or Above Altitudes
>6300	419	6.4%		
6000-6299	1498	22.9%		
5700-5999	1918	29.3%	58.6%	
5500-5699	963	14.7%	41.4%	
5000-5499	1292	19.8%		93.1%
4500-4999	348	5.3%		
4000-4499	76	1.2%		99.6%
3500-3999	15	0.2%		
3000-3499	7	0.1%		100.0%
2500-2999	2	0.0%		
<2500	1	0.0%		100.0%
Grand Total	6539	100%		

Prepared by: LAWA Noise Management

*Data source: LAX ANOMS

ANOMS Gate Penetration - DAHJR

July 1-31, 2021

Altitude MSL (ft)	Count of Ops*	% of Ops	% of Ops Between Altitudes	% of Ops At or Above Altitudes
>6300	388	5.5%		
6000-6299	1561	21.9%		
5700-5999	2114	29.7%	57.1%	
5500-5699	1037	14.6%	42.9%	
5000-5499	1466	20.6%		92.2%
4500-4999	415	5.8%		
4000-4499	109	1.5%		99.6%
3500-3999	19	0.3%		
3000-3499	7	0.1%		100.0%
2500-2999	2	0.0%		
<2500	0	0.0%		100.0%
Grand Total	7118	100%		

Prepared by: LAWA Noise Management

*Data source: LAX ANOMS

ANOMS Gate Penetration - DAHJR

August 1-31, 2021

Altitude MSL (ft)	Count of Ops*	% of Ops	% of Ops Between Altitudes	% of Ops At or Above Altitudes
>6300	421	5.9%		
6000-6299	1592	22.1%		
5700-5999	2084	29.0%	57.0%	
5500-5699	1061	14.8%	43.0%	
5000-5499	1482	20.6%		92.4%
4500-4999	399	5.5%		
4000-4499	112	1.6%		99.5%
3500-3999	24	0.3%		
3000-3499	9	0.1%		99.9%
2500-2999	5	0.1%		
<2500	1	0.0%		100.0%
Grand Total	7190	100%		

Prepared by: LAWA Noise Management

*Data source: LAX ANOMS

3. 6000 Foot Alt +/- 300 at DAHJR - 24 hours

ANOMS Gate Penetration - DAHJR

September 1-30, 2021

Altitude MSL (ft)	Count of Ops*	% of Ops	% of Ops Between Altitudes	% of Ops At or Above Altitudes
>6300	357	5.2%	59.1%	91.9%
6000-6299	1728	25.2%		
5700-5999	1963	28.7%		
5500-5699	895	13.1%		
5000-5499	1350	19.7%		
4500-4999	423	6.2%		
4000-4499	94	1.4%		
3500-3999	24	0.4%		
3000-3499	9	0.1%		
2500-2999	4	0.1%		
<2500	0	0.0%	100.0%	
Grand Total	6847	100%		

Prepared by: LAWA Noise Management

*Data source: LAX ANOMS

ANOMS Gate Penetration - DAHJR

October 1-31, 2021

Altitude MSL (ft)	Count of Ops*	% of Ops	% of Ops Between Altitudes	% of Ops At or Above Altitudes
>6300	353	5.1%	59.6%	91.2%
6000-6299	1798	26.1%		
5700-5999	1951	28.3%		
5500-5699	875	12.7%		
5000-5499	1304	18.9%		
4500-4999	441	6.4%		
4000-4499	108	1.6%		
3500-3999	46	0.7%		
3000-3499	9	0.1%		
2500-2999	3	0.0%		
<2500	0	0.0%	100.0%	
Grand Total	6888	100%		

Prepared by: LAWA Noise Management

*Data source: LAX ANOMS

ANOMS Gate Penetration - DAHJR

November 1-30, 2021

Altitude MSL (ft)	Count of Ops*	% of Ops	% of Ops Between Altitudes	% of Ops At or Above Altitudes
>6300	288	4.4%	56.8%	90.3%
6000-6299	1564	23.9%		
5700-5999	1867	28.5%		
5500-5699	848	12.9%		
5000-5499	1347	20.6%		
4500-4999	455	6.9%		
4000-4499	132	2.0%		
3500-3999	38	0.6%		
3000-3499	9	0.1%		
2500-2999	4	0.1%		
<2500	0	0.0%	100.0%	
Grand Total	6552	100%		

Prepared by: LAWA Noise Management

*Data source: LAX ANOMS

ANOMS Gate Penetration - DAHJR

December 1-31, 2021

Altitude MSL (ft)	Count of Ops*	% of Ops	% of Ops Between Altitudes	% of Ops At or Above Altitudes
>6300	347	8.0%	63.1%	92.3%
6000-6299	1200	27.8%		
5700-5999	1182	27.3%		
5500-5699	522	12.1%		
5000-5499	738	17.1%		
4500-4999	257	5.9%		
4000-4499	60	1.4%		
3500-3999	12	0.3%		
3000-3499	5	0.1%		
2500-2999	1	0.0%		
<2500	0	0.0%	100.0%	
Grand Total	4324	100%		

Prepared by: LAWA Noise Management

*Data source: LAX ANOMS

3. 6000 Foot Alt +/- 300 at DAHJR - 24 hours

ANOMS Gate Penetration - DAHJR

January 1-31, 2022

Altitude MSL (ft)	Count of Ops*	% of Ops	% of Ops Between Altitudes	% of Ops At or Above Altitudes
>6300	239	4.0%		
6000-6299	1369	22.8%		
5700-5999	1606	26.7%	53.4%	
5500-5699	753	12.5%	46.6%	
5000-5499	1311	21.8%		87.8%
4500-4999	503	8.4%		
4000-4499	181	3.0%		99.1%
3500-3999	40	0.7%		
3000-3499	10	0.2%		100.0%
2500-2999	2	0.0%		
<2500	0	0.0%		100.0%
Grand Total	6014	100%		

Prepared by: LAWA Noise Management

*Data source: LAX ANOMS

ANOMS Gate Penetration - DAHJR

February 1-28, 2022

Altitude MSL (ft)	Count of Ops*	% of Ops	% of Ops Between Altitudes	% of Ops At or Above Altitudes
>6300	249	4.3%		
6000-6299	1315	22.8%		
5700-5999	1502	26.1%	53.2%	
5500-5699	739	12.8%	46.8%	
5000-5499	1260	21.9%		87.9%
4500-4999	503	8.7%		
4000-4499	151	2.6%		99.3%
3500-3999	40	0.7%		
3000-3499	2	0.0%		100.0%
2500-2999	1	0.0%		
<2500	0	0.0%		100.0%
Grand Total	5762	100%		

Prepared by: LAWA Noise Management

*Data source: LAX ANOMS

4. DAHJR - 0100 to 0500 totals

Altitude MSL (ft)	Time of Night						Totals by Height
	12:00 to 12:59 AM	1:00 to 1:59 AM	2:00 to 2:59 AM	3:00 to 3:59 AM	4:00 to 4:59 AM	5:00 to 5:59 AM	
>6000	8	1	0	2	6	33	50
5750-6000	6	0	3	1	4	7	21
5500-5749	0	0	0	0	1	5	6
5250-5499	1	0	1	0	2	1	5
5000-5249	1	0	0	0	0	2	3
4750-4999	1	0	0	0	1	2	4
<4750	0	0	0	1	0	2	3
Total of All Flights	17	1	4	4	14	52	92
		1 to 5 Total		6			

Feb 2020
6 flights

Altitude MSL (ft)	Time of Night						Totals by Height
	12:00 to 12:59 AM	1:00 to 1:59 AM	2:00 to 2:59 AM	3:00 to 3:59 AM	4:00 to 4:59 AM	5:00 to 5:59 AM	
>6000	9	1	0	2	2	12	26
5750-6000	7	1	0	0	1	5	14
5500-5749	0	0	2	0	1	2	5
5250-5499	0	0	0	0	0	2	2
5000-5249	1	0	0	1	0	0	2
4750-4999	1	0	1	0	0	0	2
<4750	1	0	0	0	0	2	3
Total of All Flights	19	2	3	3	4	23	54
		1 to 5 Total		5			

Mar 2020
5 flights

4. DAHJR - 0100 to 0500 totals

Apr 2020
4 flights

Altitude MSL (ft)	Time of Night						Totals by Height
	12:00 to 12:59 AM	1:00 to 1:59 AM	2:00 to 2:59 AM	3:00 to 3:59 AM	4:00 to 4:59 AM	5:00 to 5:59 AM	
>6000	3	0	1	3	6	1	14
5750-6000	0	1	0	0	1	0	2
5500-5749	2	0	0	0	2	0	4
5250-5499	0	0	1	0	0	0	1
5000-5249	0	1	0	0	0	0	1
4750-4999	0	0	0	0	0	0	0
<4750	0	0	0	0	0	0	0
Total of All Flights	5	2	2	3	9	1	22
		1 to 5 Total		4			

May 2020
7 flights

Altitude MSL (ft)	Time of Night						Totals by Height
	12:00 to 12:59 AM	1:00 to 1:59 AM	2:00 to 2:59 AM	3:00 to 3:59 AM	4:00 to 4:59 AM	5:00 to 5:59 AM	
>6000	3	9	5	6	6	4	33
5750-6000	0	5	1	1	1	0	8
5500-5749	0	0	0	0	2	3	5
5250-5499	0	1	1	1	0	0	3
5000-5249	0	1	0	0	0	0	1
4750-4999	0	0	0	0	0	0	0
<4750	0	1	0	0	0	0	1
Total of All Flights	3	17	7	8	9	7	51
		1 to 5 Total		7			

4. DAHJR - 0100 to 0500 totals

Jun 2020
0 flights

Altitude MSL (ft)	Time of Night						Totals by Height
	12:00 to 12:59 AM	1:00 to 1:59 AM	2:00 to 2:59 AM	3:00 to 3:59 AM	4:00 to 4:59 AM	5:00 to 5:59 AM	
>6000	1	0	0	0	0	3	4
5750-6000	2	0	0	0	0	0	2
5500-5749	2	0	0	0	0	0	2
5250-5499	0	0	0	0	0	1	1
5000-5249	0	0	0	0	0	0	0
4750-4999	0	0	0	0	0	0	0
<4750	0	0	0	0	0	0	0
Total of All Flights	5	0	0	0	0	4	9
		1 to 5 Total		0			

Jul 2020
9 flights

Altitude MSL (ft)	Time of Night						Totals by Height
	12:00 to 12:59 AM	1:00 to 1:59 AM	2:00 to 2:59 AM	3:00 to 3:59 AM	4:00 to 4:59 AM	5:00 to 5:59 AM	
>6000	7	3	3	6	4	14	37
5750-6000	2	2	2	1	4	2	13
5500-5749	2	0	1	2	1	0	6
5250-5499	0	0	0	0	0	0	0
5000-5249	0	0	0	2	1	0	3
4750-4999	0	0	1	1	0	1	3
<4750	0	0	0	0	0	0	0
Total of All Flights	11	5	7	12	10	17	62
		1 to 5 Total		9			

4. DAHJR - 0100 to 0500 totals

Altitude MSL (ft)	Time of Night						Totals by Height
	12:00 to 12:59 AM	1:00 to 1:59 AM	2:00 to 2:59 AM	3:00 to 3:59 AM	4:00 to 4:59 AM	5:00 to 5:59 AM	
>6000	2	0	4	6	5	11	28
5750-6000	1	0	0	0	5	3	9
5500-5749	2	1	0	0	0	0	3
5250-5499	0	1	0	0	0	2	3
5000-5249	0	0	0	0	0	0	0
4750-4999	0	0	0	0	0	0	0
<4750	0	0	0	0	0	0	0
Total of All Flights	5	2	4	6	10	16	43
1 to 5 Total			2				

Aug 2020
2 flights

Altitude MSL (ft)	Time of Night						Totals by Height
	12:00 to 12:59 AM	1:00 to 1:59 AM	2:00 to 2:59 AM	3:00 to 3:59 AM	4:00 to 4:59 AM	5:00 to 5:59 AM	
>6000	2	2	7	8	10	21	50
5750-6000	2	1	4	0	2	5	14
5500-5749	1	1	0	0	0	0	2
5250-5499	0	0	0	0	0	0	0
5000-5249	1	0	0	0	0	1	2
4750-4999	0	0	0	0	0	0	0
<4750	0	0	0	0	0	0	0
Total of All Flights	6	4	11	8	12	27	68
1 to 5 Total			1				

Sep 2020
2 flights

4. DAHJR - 0100 to 0500 totals

Altitude MSL (ft)	Time of Night						Totals by Height
	12:00 to 12:59 AM	1:00 to 1:59 AM	2:00 to 2:59 AM	3:00 to 3:59 AM	4:00 to 4:59 AM	5:00 to 5:59 AM	
>6000	7	3	2	7	9	37	65
5750-6000	1	3	0	5	2	7	18
5500-5749	0	1	2	0	0	2	5
5250-5499	0	0	0	1	0	2	3
5000-5249	0	0	0	0	0	3	3
4750-4999	0	0	1	1	0	1	3
<4750	0	0	0	0	0	2	2
Total of All Flights	8	7	5	14	11	54	99
		1 to 5 Total		6			

Oct 2020
6 flights

Altitude MSL (ft)	Time of Night						Totals by Height
	12:00 to 12:59 AM	1:00 to 1:59 AM	2:00 to 2:59 AM	3:00 to 3:59 AM	4:00 to 4:59 AM	5:00 to 5:59 AM	
>6000	9	6	8	2	14	26	65
5750-6000	0	0	2	0	7	11	20
5500-5749	2	1	3	1	3	3	13
5250-5499	2	0	0	0	1	3	6
5000-5249	0	0	0	1	0	0	1
4750-4999	0	0	0	0	0	1	1
<4750	0	0	0	0	0	0	0
Total of All Flights	13	7	13	4	25	44	106
		1 to 5 Total		10			

Nov 2020
10 flights

4. DAHJR - 0100 to 0500 totals

Altitude MSL (ft)	Time of Night						Totals by Height
	12:00 to 12:59 AM	1:00 to 1:59 AM	2:00 to 2:59 AM	3:00 to 3:59 AM	4:00 to 4:59 AM	5:00 to 5:59 AM	
>6000	1	7	2	4	9	12	35
5750-6000	1	1	0	0	1	5	8
5500-5749	4	1	0	0	0	1	6
5250-5499	0	0	0	0	0	4	4
5000-5249	0	0	0	0	0	0	0
4750-4999	0	0	0	0	0	0	0
<4750	0	0	0	0	0	0	0
Total of All Flights	6	9	2	4	10	22	53
		1 to 5 Total		1			

Altitude MSL (ft)	Time of Night						Totals by Height
	12:00 to 12:59 AM	1:00 to 1:59 AM	2:00 to 2:59 AM	3:00 to 3:59 AM	4:00 to 4:59 AM	5:00 to 5:59 AM	
>6000	1	1	0	1	7	13	23
5750-6000	2	0	0	0	3	5	10
5500-5749	1	0	0	0	0	0	1
5250-5499	1	0	0	0	1	1	3
5000-5249	1	0	0	0	0	0	1
4750-4999	1	0	0	0	0	0	1
<4750	0	0	0	0	0	0	0
Total of All Flights	7	1	0	1	11	19	39
		1 to 5 Total		1			

Dec 2020
1 flight

Jan 2021
1 flight

4. DAHJR - 0100 to 0500 totals

Altitude MSL (ft)	Time of Night						Totals by Height
	12:00 to 12:59 AM	1:00 to 1:59 AM	2:00 to 2:59 AM	3:00 to 3:59 AM	4:00 to 4:59 AM	5:00 to 5:59 AM	
>6000	2	1	2	1	2	20	28
5750-6000	1	1	0	1	0	6	9
5500-5749	2	0	0	0	5	3	10
5250-5499	1	0	3	1	2	3	10
5000-5249	0	0	1	1	1	2	5
4750-4999	0	0	0	0	0	0	0
<4750	0	0	0	0	0	2	2
Total of All Flights	6	2	6	4	10	36	64
		1 to 5 Total		14			

Feb 2021
14 flights

Altitude MSL (ft)	Time of Night						Totals by Height
	12:00 to 12:59 AM	1:00 to 1:59 AM	2:00 to 2:59 AM	3:00 to 3:59 AM	4:00 to 4:59 AM	5:00 to 5:59 AM	
>6000	4	2	6	2	7	22	43
5750-6000	3	0	0	1	4	7	15
5500-5749	1	1	0	0	0	1	3
5250-5499	1	0	0	0	0	1	2
5000-5249	0	0	0	0	0	1	1
4750-4999	0	0	0	0	0	0	0
<4750	0	0	1	0	0	0	1
Total of All Flights	9	3	7	3	11	32	65
		1 to 5 Total		2			

Mar 2021
2 flights

4. DAHJR - 0100 to 0500 totals

Altitude MSL (ft)	Time of Night						Totals by Height
	12:00 to 12:59 AM	1:00 to 1:59 AM	2:00 to 2:59 AM	3:00 to 3:59 AM	4:00 to 4:59 AM	5:00 to 5:59 AM	
>6000	0	5	10	3	14	25	57
5750-6000	1	4	2	2	1	7	17
5500-5749	0	0	0	1	0	1	2
5250-5499	0	0	0	0	0	1	1
5000-5249	0	0	0	0	0	0	0
4750-4999	0	0	0	0	0	0	0
<4750	0	0	1	0	0	0	1
Total of All Flights	1	9	13	6	15	34	78
		1 to 5 Total		2			

Apr 2021
2 flights

Altitude MSL (ft)	Time of Night						Totals by Height
	12:00 to 12:59 AM	1:00 to 1:59 AM	2:00 to 2:59 AM	3:00 to 3:59 AM	4:00 to 4:59 AM	5:00 to 5:59 AM	
>6000	5	1	0	1	0	3	10
5750-6000	2	1	0	0	0	1	4
5500-5749	2	1	0	0	0	0	3
5250-5499	0	0	0	0	0	0	0
5000-5249	2	0	0	0	0	0	2
4750-4999	1	0	0	0	0	0	1
<4750	1	0	0	0	0	0	1
Total of All Flights	13	3	0	1	0	4	21
		1 to 5 Total		1			

May 2021
1 flight

4. DAHJR - 0100 to 0500 totals

Altitude MSL (ft)	Time of Night						Totals by Height
	12:00 to 12:59 AM	1:00 to 1:59 AM	2:00 to 2:59 AM	3:00 to 3:59 AM	4:00 to 4:59 AM	5:00 to 5:59 AM	
>6000	10	3	10	7	8	16	54
5750-6000	4	0	0	0	4	7	15
5500-5749	1	2	2	0	1	2	8
5250-5499	2	0	0	0	0	2	4
5000-5249	1	0	1	0	0	0	2
4750-4999	0	0	0	1	0	0	1
<4750	0	0	0	0	0	1	1
Total of All Flights	18	5	13	8	13	28	85
		1 to 5 Total		7			

Jun 2021
7 flights

Altitude MSL (ft)	Time of Night						Totals by Height
	12:00 to 12:59 AM	1:00 to 1:59 AM	2:00 to 2:59 AM	3:00 to 3:59 AM	4:00 to 4:59 AM	5:00 to 5:59 AM	
>6000	6	2	7	6	4	15	40
5750-6000	1	2	1	1	1	2	8
5500-5749	1	1	0	0	1	3	6
5250-5499	0	0	0	0	1	2	3
5000-5249	0	0	0	0	0	0	0
4750-4999	1	0	0	0	0	0	1
<4750	1	0	0	0	0	0	1
Total of All Flights	10	5	8	7	7	22	59
		1 to 5 Total		3			

Jul 2021
3 flights

4. DAHJR - 0100 to 0500 totals

Altitude MSL (ft)	Time of Night						Totals by Height
	12:00 to 12:59 AM	1:00 to 1:59 AM	2:00 to 2:59 AM	3:00 to 3:59 AM	4:00 to 4:59 AM	5:00 to 5:59 AM	
>6000	4	3	5	6	11	29	58
5750-6000	8	3	1	2	6	8	28
5500-5749	4	2	3	3	8	4	24
5250-5499	2	0	1	1	2	7	13
5000-5249	0	2	0	0	0	2	4
4750-4999	0	0	0	0	1	0	1
<4750	0	0	0	0	0	2	2
Total of All Flights	18	10	10	12	28	52	130
		1 to 5 Total		23			

Altitude MSL (ft)	Time of Night						Totals by Height
	12:00 to 12:59 AM	1:00 to 1:59 AM	2:00 to 2:59 AM	3:00 to 3:59 AM	4:00 to 4:59 AM	5:00 to 5:59 AM	
>6000	11	4	9	10	13	15	62
5750-6000	2	3	1	1	1	3	11
5500-5749	2	0	0	1	0	1	4
5250-5499	1	1	0	0	1	2	5
5000-5249	1	0	0	0	2	0	3
4750-4999	0	2	0	0	0	1	3
<4750	1	0	1	0	0	1	3
Total of All Flights	18	10	11	12	17	23	91
		1 to 5 Total		8			

Aug 2021
23 flights

Sep 2021
8 flights

4. DAHJR - 0100 to 0500 totals

Altitude MSL (ft)	Time of Night						Totals by Height
	12:00 to 12:59 AM	1:00 to 1:59 AM	2:00 to 2:59 AM	3:00 to 3:59 AM	4:00 to 4:59 AM	5:00 to 5:59 AM	
>6000	24	8	13	9	6	30	90
5750-6000	11	6	1	1	4	8	31
5500-5749	6	2	1	1	0	1	11
5250-5499	5	1	0	0	0	1	7
5000-5249	0	0	1	0	0	0	1
4750-4999	0	0	0	0	0	0	0
<4750	0	0	0	0	0	0	0
Total of All Flights	46	17	16	11	10	40	140
		1 to 5 Total		6			

Oct 2021
6 flights

Altitude MSL (ft)	Time of Night						Totals by Height
	12:00 to 12:59 AM	1:00 to 1:59 AM	2:00 to 2:59 AM	3:00 to 3:59 AM	4:00 to 4:59 AM	5:00 to 5:59 AM	
>6000	23	10	15	17	18	32	115
5750-6000	10	1	5	1	3	10	30
5500-5749	7	1	1	1	2	4	16
5250-5499	1	2	1	0	0	4	8
5000-5249	0	0	1	0	0	0	1
4750-4999	1	0	0	0	0	1	2
<4750	0	2	0	0	0	0	2
Total of All Flights	42	16	23	19	23	51	174
		1 to 5 Total		11			

Nov 2021
11 flights

4. DAHJR - 0100 to 0500 totals

Altitude MSL (ft)	Time of Night						Totals by Height
	12:00 to 12:59 AM	1:00 to 1:59 AM	2:00 to 2:59 AM	3:00 to 3:59 AM	4:00 to 4:59 AM	5:00 to 5:59 AM	
>6000	7	9	6	3	5	22	52
5750-6000	1	2	2	0	1	4	10
5500-5749	1	0	0	2	2	3	8
5250-5499	1	0	0	0	3	4	8
5000-5249	1	0	2	0	1	0	4
4750-4999	0	0	0	0	1	0	1
<4750	0	0	0	0	0	1	1
Total of All Flights	11	11	10	5	13	34	84
		1 to 5 Total		11			

Dec 2021
11 flights

Altitude MSL (ft)	Time of Night						Totals by Height
	12:00 to 12:59 AM	1:00 to 1:59 AM	2:00 to 2:59 AM	3:00 to 3:59 AM	4:00 to 4:59 AM	5:00 to 5:59 AM	
>6000	5	4	8	4	5	28	54
5750-6000	3	1	0	3	2	11	20
5500-5749	2	0	1	1	0	2	6
5250-5499	1	0	0	2	0	1	4
5000-5249	0	0	1	0	0	0	1
4750-4999	0	0	0	0	0	1	1
<4750	0	1	0	0	0	0	1
Total of All Flights	11	6	10	10	7	43	87
		1 to 5 Total		6			

Jan 2022
6 flights

4. DAHJR - 0100 to 0500 totals

Altitude MSL (ft)	Time of Night						Totals by Height
	12:00 to 12:59 AM	1:00 to 1:59 AM	2:00 to 2:59 AM	3:00 to 3:59 AM	4:00 to 4:59 AM	5:00 to 5:59 AM	
>6000	3	2	11	13	10	43	82
5750-6000	4	2	2	2	3	14	27
5500-5749	1	0	1	0	0	3	5
5250-5499	5	1	0	0	0	1	7
5000-5249	1	0	0	0	0	0	1
4750-4999	1	0	0	0	1	1	3
<4750	0	1	0	0	0	2	3
Total of All Flights	15	6	14	15	14	64	128
		1 to 5 Total		4			

Feb 2022
4 flights

5. 6000 Foot Alt +/- 300 at GADDO - 24 hours

ANOMS Gate Penetration - GADDO

January 1-31, 2020

Altitude MSL (ft)	Count of Ops*	% of Ops	% of Ops Between Altitudes	% of Ops At or Above Altitudes
>6300	50	0.6%	93.4%	35.5%
6000-6299	133	1.5%		
5700-5999	396	4.5%		
5500-5699	399	4.6%		
5000-5499	2124	24.3%		
4500-4999	2482	28.4%		
4000-4499	1771	20.3%		
3500-3999	874	10.0%		
3000-3499	385	4.4%		
2500-2999	121	1.4%		
<2500	8	0.1%	100.0%	84.1%
Grand Total	8743	100%		

Prepared by: LAWA Noise Management

*Data source: LAX ANOMS

ANOMS Gate Penetration - GADDO

February 1-29, 2020

Altitude MSL (ft)	Count of Ops*	% of Ops	% of Ops Between Altitudes	% of Ops At or Above Altitudes
>6300	35	0.5%	94.6%	29.4%
6000-6299	88	1.2%		
5700-5999	287	3.8%		
5500-5699	276	3.6%		
5000-5499	1546	20.3%		
4500-4999	2175	28.6%		
4000-4499	1678	22.1%		
3500-3999	936	12.3%		
3000-3499	441	5.8%		
2500-2999	132	1.7%		
<2500	10	0.1%	100.0%	80.0%
Grand Total	7604	100%		

Prepared by: LAWA Noise Management

*Data source: LAX ANOMS

ANOMS Gate Penetration - GADDO

March 1-31, 2020

Altitude MSL (ft)	Count of Ops*	% of Ops	% of Ops Between Altitudes	% of Ops At or Above Altitudes
>6300	18	0.3%	94.8%	27.8%
6000-6299	86	1.3%		
5700-5999	235	3.6%		
5500-5699	224	3.4%		
5000-5499	1261	19.2%		
4500-4999	1699	25.9%		
4000-4499	1439	21.9%		
3500-3999	873	13.3%		
3000-3499	534	8.1%		
2500-2999	180	2.7%		
<2500	22	0.3%	100.0%	75.5%
Grand Total	6571	100%		

Prepared by: LAWA Noise Management

*Data source: LAX ANOMS

ANOMS Gate Penetration - GADDO

April 1-30, 2020

Altitude MSL (ft)	Count of Ops*	% of Ops	% of Ops Between Altitudes	% of Ops At or Above Altitudes
>6300	13	0.6%	92.6%	33.8%
6000-6299	37	1.7%		
5700-5999	116	5.2%		
5500-5699	98	4.4%		
5000-5499	492	22.0%		
4500-4999	512	22.9%		
4000-4499	462	20.6%		
3500-3999	279	12.5%		
3000-3499	152	6.8%		
2500-2999	67	3.0%		
<2500	11	0.5%	100.0%	77.3%
Grand Total	2239	100%		

Prepared by: LAWA Noise Management

*Data source: LAX ANOMS

5. 6000 Foot Alt +/- 300 at GADDO - 24 hours

ANOMS Gate Penetration - GADDO
May 1-31, 2020

Altitude MSL (ft)	Count of Ops*	% of Ops	% of Ops Between Altitudes	% of Ops At or Above Altitudes
>6300	24	0.9%	7.9%	38.3%
6000-6299	56	2.0%		
5700-5999	137	5.0%		
5500-5699	145	5.3%		
5000-5499	687	25.1%		
4500-4999	656	23.9%		
4000-4499	548	20.0%		
3500-3999	309	11.3%		
3000-3499	138	5.0%		
2500-2999	39	1.4%		
<2500	5	0.1%	100.0%	
Grand Total	2742	100%		

Prepared by: LAWA Noise Management
*Data source: LAX ANOMS

ANOMS Gate Penetration - GADDO
July 1-31, 2020

Altitude MSL (ft)	Count of Ops*	% of Ops	% of Ops Between Altitudes	% of Ops At or Above Altitudes
>6300	31	0.8%	8.6%	40.3%
6000-6299	84	2.1%		
5700-5999	226	5.7%		
5500-5699	199	5.0%		
5000-5499	1065	26.7%		
4500-4999	1092	27.4%		
4000-4499	733	18.4%		
3500-3999	355	8.9%		
3000-3499	151	3.8%		
2500-2999	43	1.1%		
<2500	3	0.1%	100.0%	
Grand Total	3982	100%		

Prepared by: LAWA Noise Management
*Data source: LAX ANOMS

ANOMS Gate Penetration - GADDO
June 1-30, 2020

Altitude MSL (ft)	Count of Ops*	% of Ops	% of Ops Between Altitudes	% of Ops At or Above Altitudes
>6300	27	0.9%	8.3%	35.6%
6000-6299	59	1.9%		
5700-5999	175	5.5%		
5500-5699	137	4.3%		
5000-5499	725	23.0%		
4500-4999	823	26.1%		
4000-4499	650	20.6%		
3500-3999	362	11.5%		
3000-3499	154	4.9%		
2500-2999	43	1.4%		
<2500	1	0.0%	100.0%	
Grand Total	3156	100%		

Prepared by: LAWA Noise Management
*Data source: LAX ANOMS

ANOMS Gate Penetration - GADDO
August 1-31, 2020

Altitude MSL (ft)	Count of Ops*	% of Ops	% of Ops Between Altitudes	% of Ops At or Above Altitudes
>6300	37	0.9%	7.5%	34.6%
6000-6299	86	2.0%		
5700-5999	195	4.6%		
5500-5699	157	3.7%		
5000-5499	997	23.4%		
4500-4999	1208	28.4%		
4000-4499	896	21.0%		
3500-3999	454	10.7%		
3000-3499	180	4.2%		
2500-2999	44	1.0%		
<2500	5	0.1%	100.0%	
Grand Total	4259	100%		

Prepared by: LAWA Noise Management
*Data source: LAX ANOMS

5. 6000 Foot Alt +/- 300 at GADDO - 24 hours

ANOMS Gate Penetration - GADDO
September 1-30, 2020

Altitude MSL (ft)	Count of Ops*	% of Ops	% of Ops Between Altitudes	% of Ops At or Above Altitudes	
>6300	13	0.3%	94.0%	100.0%	79.7%
6000-6299	65	1.5%			
5700-5999	175	4.1%			
5500-5699	165	3.9%			
5000-5499	839	19.8%			
4500-4999	1113	26.3%			
4000-4499	1001	23.7%			
3500-3999	509	12.0%			
3000-3499	252	6.0%			
2500-2999	87	2.1%			
<2500	9	0.2%	100.0%		
Grand Total	4228	100%			

Prepared by: LAWA Noise Management
*Data source: LAX ANOMS

ANOMS Gate Penetration - GADDO
October 1-31, 2020

Altitude MSL (ft)	Count of Ops*	% of Ops	% of Ops Between Altitudes	% of Ops At or Above Altitudes	
>6300	24	0.5%	93.2%	100.0%	80.8%
6000-6299	74	1.6%			
5700-5999	217	4.7%			
5500-5699	188	4.1%			
5000-5499	1005	21.7%			
4500-4999	1238	26.7%			
4000-4499	1006	21.7%			
3500-3999	537	11.6%			
3000-3499	250	5.4%			
2500-2999	95	2.0%			
<2500	7	0.2%	100.0%		
Grand Total	4641	100%			

Prepared by: LAWA Noise Management
*Data source: LAX ANOMS

ANOMS Gate Penetration - GADDO
November 1-30, 2020

Altitude MSL (ft)	Count of Ops*	% of Ops	% of Ops Between Altitudes	% of Ops At or Above Altitudes	
>6300	42	0.9%	93.7%	100.0%	79.1%
6000-6299	70	1.5%			
5700-5999	183	3.9%			
5500-5699	174	3.7%			
5000-5499	912	19.4%			
4500-4999	1241	26.4%			
4000-4499	1102	23.4%			
3500-3999	590	12.5%			
3000-3499	288	6.1%			
2500-2999	101	2.1%			
<2500	6	0.1%	100.0%		
Grand Total	4709	100%			

Prepared by: LAWA Noise Management
*Data source: LAX ANOMS

ANOMS Gate Penetration - GADDO
December 1-31, 2020

Altitude MSL (ft)	Count of Ops*	% of Ops	% of Ops Between Altitudes	% of Ops At or Above Altitudes	
>6300	20	0.4%	95.7%	100.0%	72.2%
6000-6299	39	0.9%			
5700-5999	137	3.0%			
5500-5699	145	3.2%			
5000-5499	734	16.1%			
4500-4999	1175	25.8%			
4000-4499	1036	22.7%			
3500-3999	731	16.1%			
3000-3499	401	8.8%			
2500-2999	130	2.9%			
<2500	6	0.1%	100.0%		
Grand Total	4554	100%			

Prepared by: LAWA Noise Management
*Data source: LAX ANOMS

5. 6000 Foot Alt +/- 300 at GADDO - 24 hours

ANOMS Gate Penetration - GADDO
January 1-31, 2021

Altitude MSL (ft)	Count of Ops*	% of Ops	% of Ops Between Altitudes	% of Ops At or Above Altitudes
>6300	16	0.4%	95.4%	76.2%
6000-6299	35	0.8%		
5700-5999	140	3.4%		
5500-5699	139	3.3%		
5000-5499	775	18.6%		
4500-4999	1068	25.6%		
4000-4499	1009	24.2%		
3500-3999	560	13.4%		
3000-3499	311	7.4%		
2500-2999	110	2.6%		
<2500	13	0.3%	100.0%	
Grand Total	4176	100%		

Prepared by: LAWA Noise Management
*Data source: LAX ANOMS

ANOMS Gate Penetration - GADDO
February 1-28, 2021

Altitude MSL (ft)	Count of Ops*	% of Ops	% of Ops Between Altitudes	% of Ops At or Above Altitudes
>6300	24	0.6%	94.7%	76.7%
6000-6299	59	1.4%		
5700-5999	139	3.3%		
5500-5699	130	3.1%		
5000-5499	777	18.4%		
4500-4999	1163	27.6%		
4000-4499	944	22.4%		
3500-3999	574	13.6%		
3000-3499	310	7.3%		
2500-2999	88	2.1%		
<2500	12	0.3%	100.0%	
Grand Total	4220	100%		

Prepared by: LAWA Noise Management
*Data source: LAX ANOMS

ANOMS Gate Penetration - GADDO
March 1-31, 2021

Altitude MSL (ft)	Count of Ops*	% of Ops	% of Ops Between Altitudes	% of Ops At or Above Altitudes
>6300	19	0.4%	95.2%	76.5%
6000-6299	58	1.3%		
5700-5999	132	3.1%		
5500-5699	149	3.5%		
5000-5499	841	19.5%		
4500-4999	1154	26.7%		
4000-4499	947	21.9%		
3500-3999	594	13.8%		
3000-3499	337	7.8%		
2500-2999	78	1.8%		
<2500	7	0.2%	100.0%	
Grand Total	4316	100%		

Prepared by: LAWA Noise Management
*Data source: LAX ANOMS

ANOMS Gate Penetration - GADDO
April 1-30, 2021

Altitude MSL (ft)	Count of Ops*	% of Ops	% of Ops Between Altitudes	% of Ops At or Above Altitudes
>6300	25	0.5%	93.5%	80.4%
6000-6299	80	1.7%		
5700-5999	203	4.3%		
5500-5699	183	3.9%		
5000-5499	963	20.4%		
4500-4999	1287	27.3%		
4000-4499	1055	22.4%		
3500-3999	566	12.0%		
3000-3499	277	5.9%		
2500-2999	74	1.6%		
<2500	6	0.1%	100.0%	
Grand Total	4719	100%		

Prepared by: LAWA Noise Management
*Data source: LAX ANOMS

5. 6000 Foot Alt +/- 300 at GADDO - 24 hours

ANOMS Gate Penetration - GADDO

May 1-31, 2021

Altitude MSL (ft)	Count of Ops*	% of Ops	% of Ops Between Altitudes	% of Ops At or Above Altitudes
>6300	25	0.4%	94.7%	80.8%
6000-6299	85	1.5%		
5700-5999	192	3.4%		
5500-5699	167	2.9%		
5000-5499	1137	19.8%		
4500-4999	1690	29.5%		
4000-4499	1331	23.2%		
3500-3999	697	12.2%		
3000-3499	298	5.2%		
2500-2999	101	1.8%		
<2500	7	0.1%	100.0%	28.0%
Grand Total	5730	100%		

Prepared by: LAWA Noise Management

*Data source: LAX ANOMS

ANOMS Gate Penetration - GADDO

Jun 1-30, 2021

Altitude MSL (ft)	Count of Ops*	% of Ops	% of Ops Between Altitudes	% of Ops At or Above Altitudes
>6300	27	0.4%	94.2%	85.3%
6000-6299	105	1.6%		
5700-5999	248	3.8%		
5500-5699	277	4.2%		
5000-5499	1563	23.9%		
4500-4999	1958	29.9%		
4000-4499	1400	21.4%		
3500-3999	644	9.8%		
3000-3499	245	3.7%		
2500-2999	69	1.1%		
<2500	4	0.1%	100.0%	33.9%
Grand Total	6540	100%		

Prepared by: LAWA Noise Management

*Data source: LAX ANOMS

ANOMS Gate Penetration - GADDO

July 1-31, 2021

Altitude MSL (ft)	Count of Ops*	% of Ops	% of Ops Between Altitudes	% of Ops At or Above Altitudes
>6300	29	0.4%	94.5%	83.5%
6000-6299	91	1.3%		
5700-5999	274	3.8%		
5500-5699	258	3.6%		
5000-5499	1600	22.5%		
4500-4999	2102	29.5%		
4000-4499	1591	22.4%		
3500-3999	770	10.8%		
3000-3499	321	4.5%		
2500-2999	79	1.1%		
<2500	3	0.0%	100.0%	31.6%
Grand Total	7118	100%		

Prepared by: LAWA Noise Management

*Data source: LAX ANOMS

ANOMS Gate Penetration - GADDO

August 1-31, 2021

Altitude MSL (ft)	Count of Ops*	% of Ops	% of Ops Between Altitudes	% of Ops At or Above Altitudes
>6300	33	0.5%	94.6%	84.1%
6000-6299	99	1.4%		
5700-5999	259	3.6%		
5500-5699	263	3.7%		
5000-5499	1774	24.7%		
4500-4999	2065	28.7%		
4000-4499	1554	21.6%		
3500-3999	756	10.5%		
3000-3499	290	4.0%		
2500-2999	90	1.3%		
<2500	8	0.1%	100.0%	33.8%
Grand Total	7191	100%		

Prepared by: LAWA Noise Management

*Data source: LAX ANOMS

5. 6000 Foot Alt +/- 300 at GADDO - 24 hours

ANOMS Gate Penetration - GADDO
September 1-30, 2021

Altitude MSL (ft)	Count of Ops*	% of Ops	% of Ops Between Altitudes	% of Ops At or Above Altitudes
>6300	21	0.3%	95.0%	35.2%
6000-6299	83	1.2%		
5700-5999	236	3.4%		
5500-5699	208	3.0%		
5000-5499	1862	27.2%		
4500-4999	1846	27.0%		
4000-4499	1474	21.5%		
3500-3999	714	10.4%		
3000-3499	316	4.6%		
2500-2999	81	1.2%		
<2500	5	0.1%	100.0%	83.7%
Grand Total	6846	100%		

Prepared by: LAWA Noise Management
*Data source: LAX ANOMS

ANOMS Gate Penetration - GADDO
October 1-31, 2021

Altitude MSL (ft)	Count of Ops*	% of Ops	% of Ops Between Altitudes	% of Ops At or Above Altitudes
>6300	34	0.5%	94.6%	36.8%
6000-6299	85	1.2%		
5700-5999	255	3.7%		
5500-5699	210	3.0%		
5000-5499	1949	28.3%		
4500-4999	1675	24.3%		
4000-4499	1443	20.9%		
3500-3999	787	11.4%		
3000-3499	342	5.0%		
2500-2999	104	1.5%		
<2500	6	0.1%	100.0%	82.0%
Grand Total	6890	100%		

Prepared by: LAWA Noise Management
*Data source: LAX ANOMS

ANOMS Gate Penetration - GADDO
November 1-30, 2021

Altitude MSL (ft)	Count of Ops*	% of Ops	% of Ops Between Altitudes	% of Ops At or Above Altitudes
>6300	28	0.4%	94.5%	33.2%
6000-6299	90	1.4%		
5700-5999	241	3.7%		
5500-5699	199	3.0%		
5000-5499	1614	24.6%		
4500-4999	1675	25.6%		
4000-4499	1463	22.3%		
3500-3999	764	11.7%		
3000-3499	364	5.6%		
2500-2999	105	1.6%		
<2500	6	0.1%	100.0%	81.1%
Grand Total	6549	100%		

Prepared by: LAWA Noise Management
*Data source: LAX ANOMS

ANOMS Gate Penetration - GADDO
December 1-31, 2021

Altitude MSL (ft)	Count of Ops*	% of Ops	% of Ops Between Altitudes	% of Ops At or Above Altitudes
>6300	27	0.6%	92.9%	39.1%
6000-6299	72	1.7%		
5700-5999	209	4.8%		
5500-5699	194	4.5%		
5000-5499	1189	27.5%		
4500-4999	1119	25.9%		
4000-4499	824	19.0%		
3500-3999	437	10.1%		
3000-3499	206	4.8%		
2500-2999	48	1.1%		
<2500	1	0.0%	100.0%	84.0%
Grand Total	4326	100%		

Prepared by: LAWA Noise Management
*Data source: LAX ANOMS

5. 6000 Foot Alt +/- 300 at GADDO - 24 hours

ANOMS Gate Penetration - GADDO
January 1-31, 2022

Altitude MSL (ft)	Count of Ops*	% of Ops	% of Ops Between Altitudes	% of Ops At or Above Altitudes
>6300	16	0.3%		
6000-6299	55	0.9%		
5700-5999	149	2.5%	3.7%	
5500-5699	147	2.4%	96.3%	
5000-5499	1465	24.4%		30.5%
4500-4999	1469	24.5%		
4000-4499	1314	21.9%		76.8%
3500-3999	784	13.1%		98.0%
3000-3499	485	8.1%		
2500-2999	116	1.9%		
<2500	6	0.1%		100.0%
Grand Total	6006	100%		

Prepared by: LAWA Noise Management
*Data source: LAX ANOMS

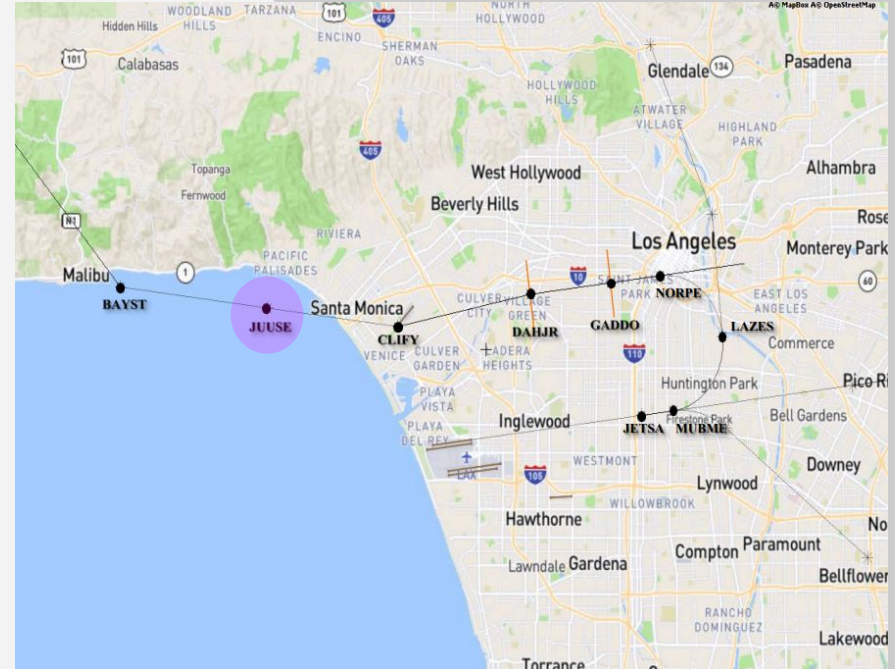
ANOMS Gate Penetration - GADDO
February 1-28, 2022

Altitude MSL (ft)	Count of Ops*	% of Ops	% of Ops Between Altitudes	% of Ops At or Above Altitudes
>6300	16	0.3%		
6000-6299	62	1.1%		
5700-5999	175	3.0%	4.4%	
5500-5699	154	2.7%	95.6%	
5000-5499	1263	22.0%		29.0%
4500-4999	1366	23.7%		
4000-4499	1301	22.6%		75.4%
3500-3999	837	14.5%		98.2%
3000-3499	473	8.2%		
2500-2999	100	1.7%		
<2500	6	0.1%		100.0%
Grand Total	5753	100%		

Prepared by: LAWA Noise Management
*Data source: LAX ANOMS

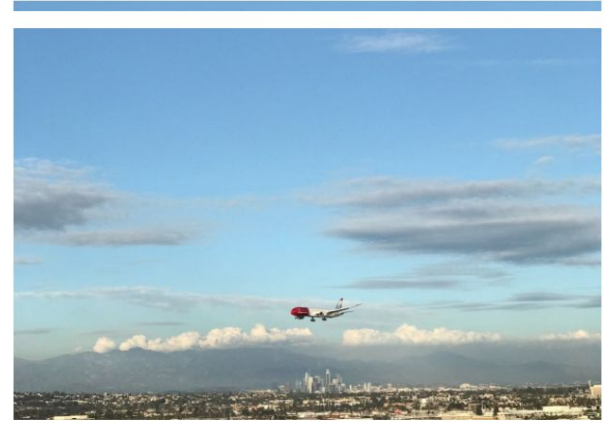
6. Update on JUUSE

The FAA is conducting a preliminary assessment of the **JUUSE waypoint relocation proposal** and will provide information on the viability of it, what the new procedure might look like, and what communities might be affected by this change. The FAA expects to complete this assessment and provide those results/findings to LAWA and the Roundtable by the May 2022 Roundtable meeting.



6. Update on Option B

The FAA is conducting a preliminary assessment of the **Option B** proposal, which, by its nature, is very complex due to the numerous FAA facilities and air route traffic control centers that are involved. The FAA anticipates completing the assessment within the next few months and will provide those results/findings at that time to LAWA and the Roundtable, possibly as soon as the July 2022 Roundtable meeting.



North Downwind Option B Proposal

07.13.2021

Metroplex Ad Hoc Committee

LAX Community Noise Roundtable

1 World Way

Los Angeles, CA 90045

6. Update on LADYJ

As LAWA recently informed you, the FAA is working on a preliminary assessment of the proposed change and will provide information on the viability of such a change, what the new departure might look like, and what communities might be affected by this change. The FAA expects to complete this assessment and provide those results/findings by the July Roundtable meeting.



THANK YOU