

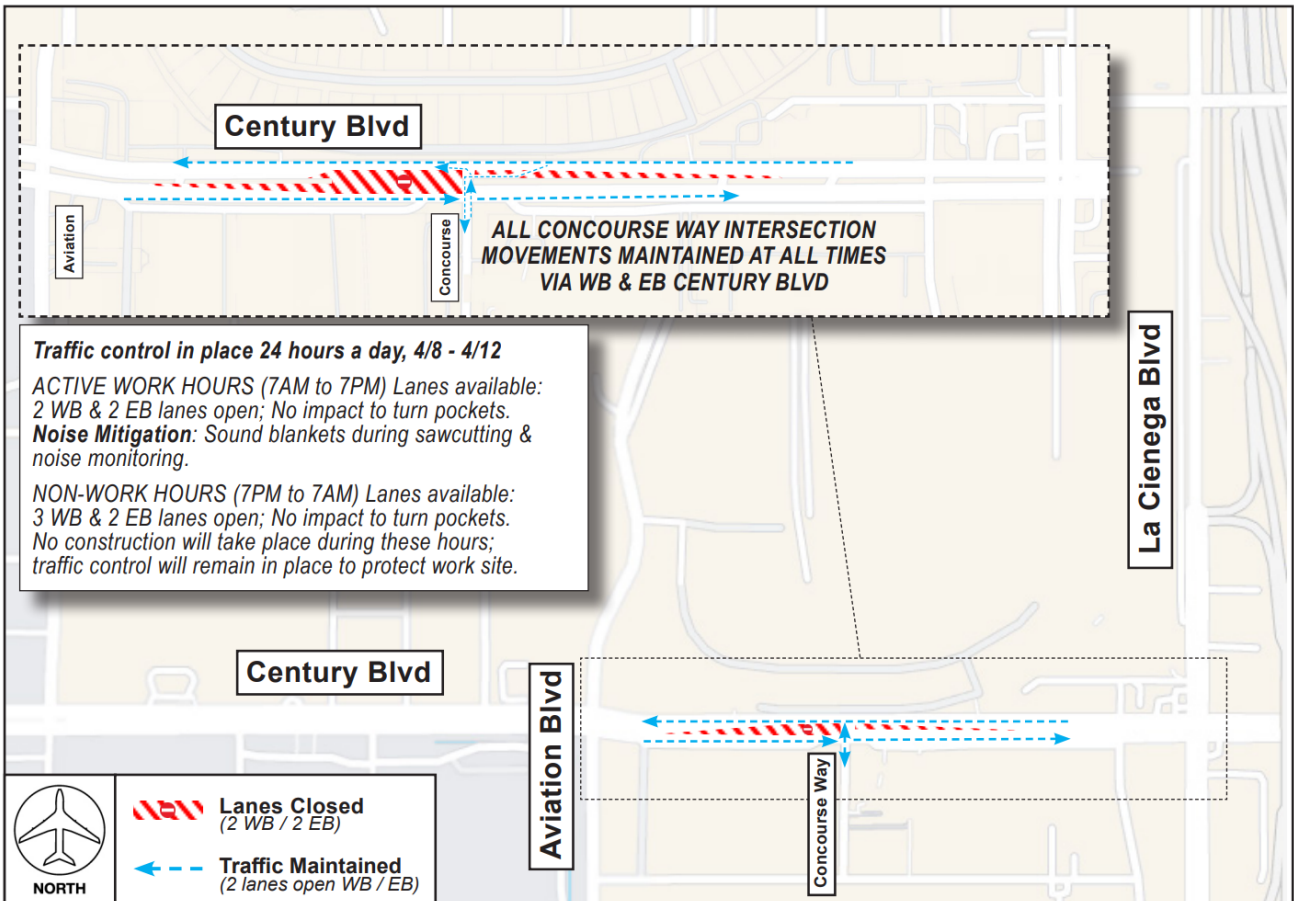


CONSTRUCTION HOT TOPICS

#1

LANE RESTRICTIONS: CENTURY BLVD AT CONCOURSE WAY APRIL 8 - 12, 2024

TO FACILITATE WORK FOR THE ROADWAY AND UTILITY ENABLING PROJECT, TWO WESTBOUND AND TWO EASTBOUND LANES ON CENTURY BOULEVARD AT CONCOURSE WAY (BETWEEN LA CIENEGA BOULEVARD AND AVIATION BOULEVARD) WILL BE CLOSED MONDAY, APRIL 8 AT 7AM CONTINUOUS (24 HOURS A DAY) THROUGH FRIDAY, APRIL 12 AT 7PM.



PLEASE NOTE:

Traffic, including access to local businesses and access to / from Concourse Way, will be maintained at all times and sound mitigation measures will be in place.



LAX Construction Hotline: 310-649-5292



LAXConstructionHotline@LAWA.org



flyLAX.com



@flyLAXairport



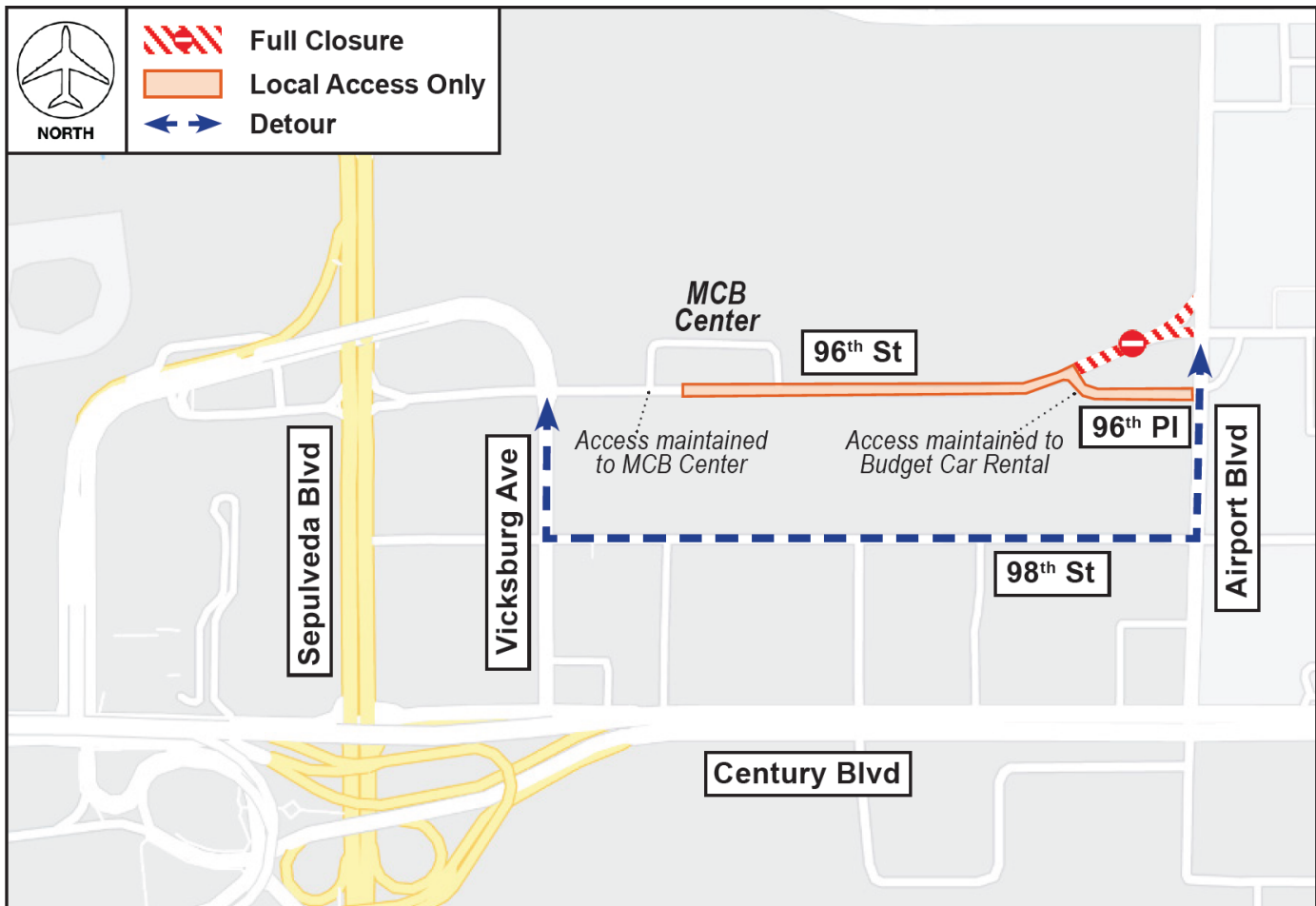
LAInternationalAirport



CONSTRUCTION HOT TOPICS

#2 STREET CLOSURE: 96TH STREET BETWEEN AIRPORT BLVD & 96TH PLACE

TO FACILITATE WORK BY THE AUTOMATED PEOPLE MOVER PROJECT, 96TH STREET BETWEEN AIRPORT BOULEVARD AND 96TH PLACE WILL BE CLOSED EFFECTIVE SATURDAY, APRIL 13 AT 11PM. THIS PORTION OF 96TH STREET IS SCHEDULED TO BE CLOSED CONTINUOUSLY (24/7) FOR APPROXIMATELY TWO MONTHS.



PLEASE NOTE:

Access to the Metro City Bus Center will be maintained at all times via 96th St, and access to Budget Rental Car will be maintained at all times via 96th Pl.

LAX Construction Hotline: 310-649-5292 LAXConstructionHotline@LAWA.org



flyLAX.com

@flyLAXairport

LAInternationalAirport



CONSTRUCTION HOT TOPICS

#3

TERMINAL 6 AIRLINE GATES RE-OPENING

THE FOLLOWING ARE SCHEDULED DATES FOR AIRLINE GATES RE-OPENING IN TERMINAL 6:

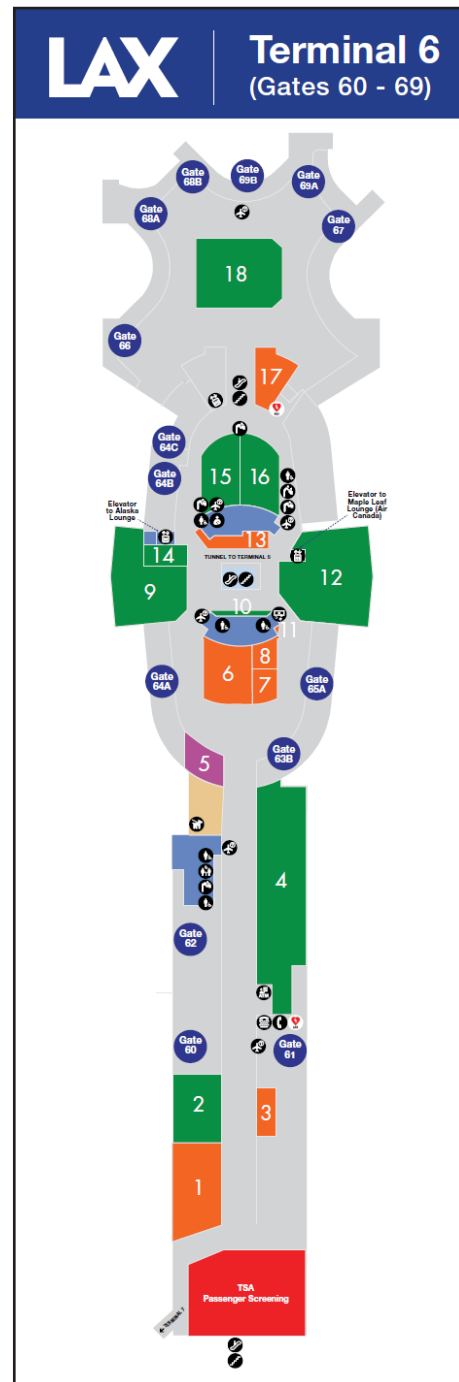
GATE 69A: APRIL 14 (CLOSED AUGUST 2023)

GATE 67: APRIL 19 (CLOSED AUGUST 2023)

GATE 65B: APRIL 25 (CLOSED JUNE 2023)

PLEASE NOTE:

Airline gate closures are in place to facilitate various construction activities for the Alaska Airlines Terminal 6 Redevelopment Program. Passenger holdrooms and seating areas remain available throughout the terminal.



LAX Construction Hotline: 310-649-5292 | LAXConstructionHotline@LAWA.org



flyLAX.com

@flyLAXairport

LAInternationalAirport



CONSTRUCTION HOT TOPICS

#4 FINAL WEEK: EASTBOUND LANE CLOSURE ON ARBOR VITAE STREET

TO FACILITATE WORK FOR THE CONRAC FACILITY, A SINGLE EASTBOUND LANE ON ARBOR VITAE ST BETWEEN MAINTENANCE DR AND AVIATION BLVD IS CLOSED THROUGH FRIDAY, APRIL 12, DAILY (M-F) FROM 6AM TO 3PM



PLEASE NOTE:

All traffic, including access to local businesses, is maintained at all times with flaggers & signage.

LAX Construction Hotline: 310-649-5292 LAXConstructionHotline@LAWA.org



flyLAX.com

@flyLAXairport

LAInternationalAirport



CONSTRUCTION HOT TOPICS



#5 APRIL 2024: CTA LANE RESTRICTIONS

THE MAP BELOW IS A COLLECTIVE SNAPSHOT OF ALL SCHEDULED 24/7 LANE RESTRICTIONS FOR CTA DEPARTURES AND ARRIVALS LEVEL ROADWAYS FOR THE MONTH OF APRIL 2024.

PLEASE NOTE:

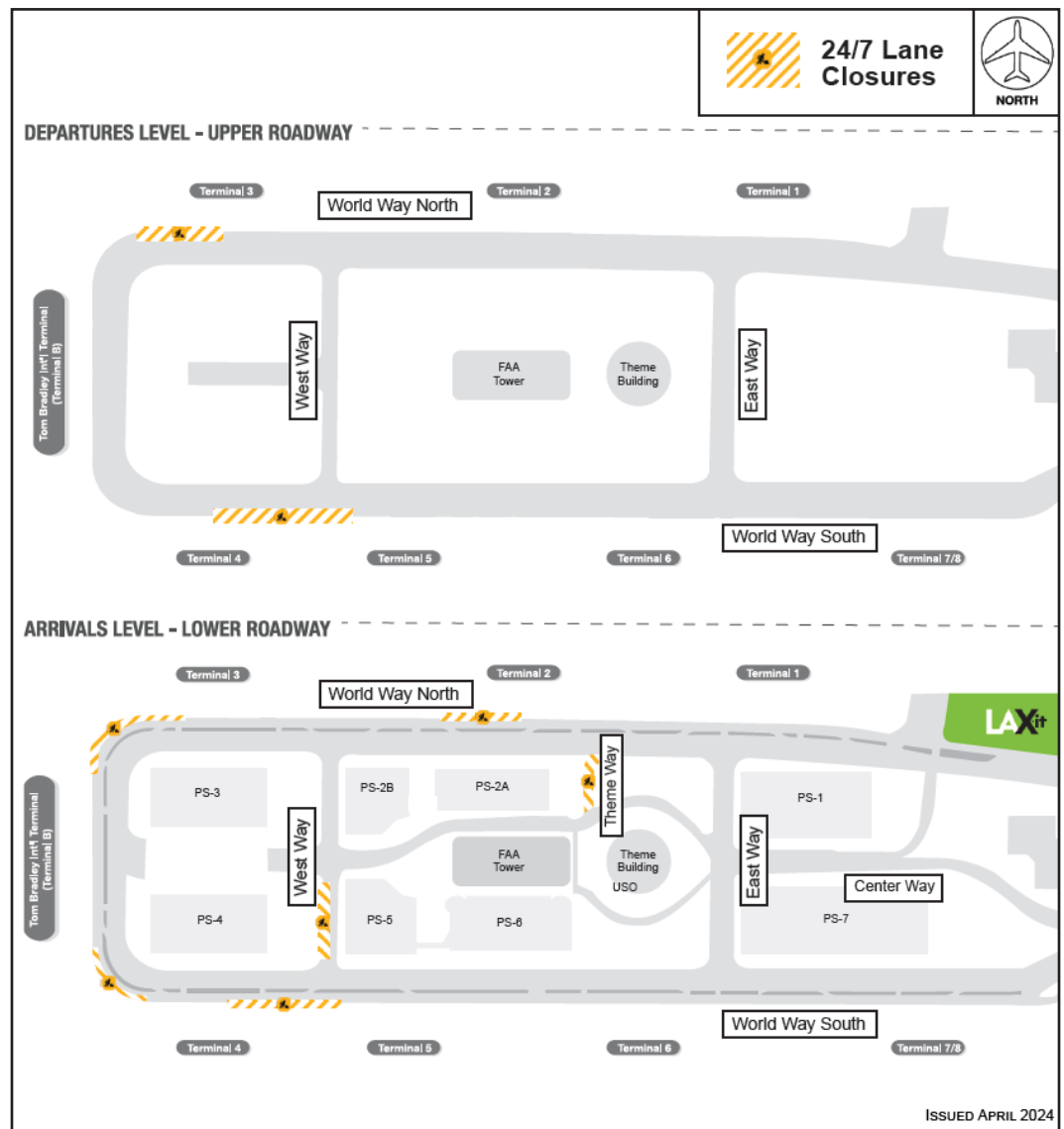
This map only reflects 24/7 continuous lane closures in the CTA; other nightly lane closures / sidewalk restrictions may be in place to facilitate construction activities

ACCESS MAINTAINED:

Traffic around the Central Terminal Area will be maintained at all times, as well as access to passenger pick-up and drop-off

PLAN AHEAD:

Motorists should plan ahead for potential delays



LAX Construction Hotline: 310-649-5292 LAXConstructionHotline@LAWA.org



flyLAX.com

@flyLAXairport

LAInternationalAirport

