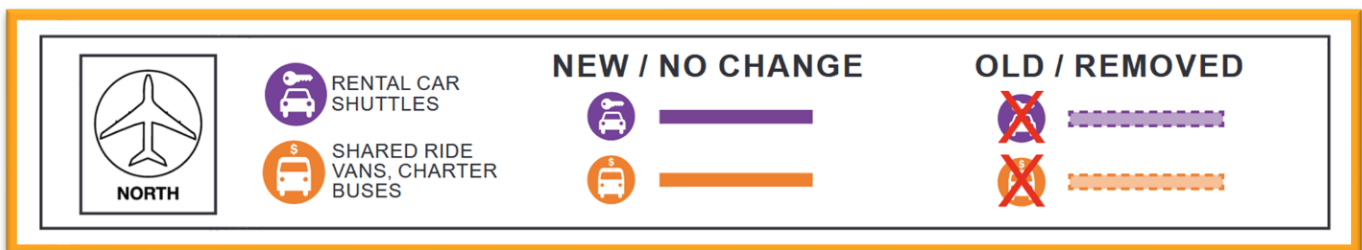
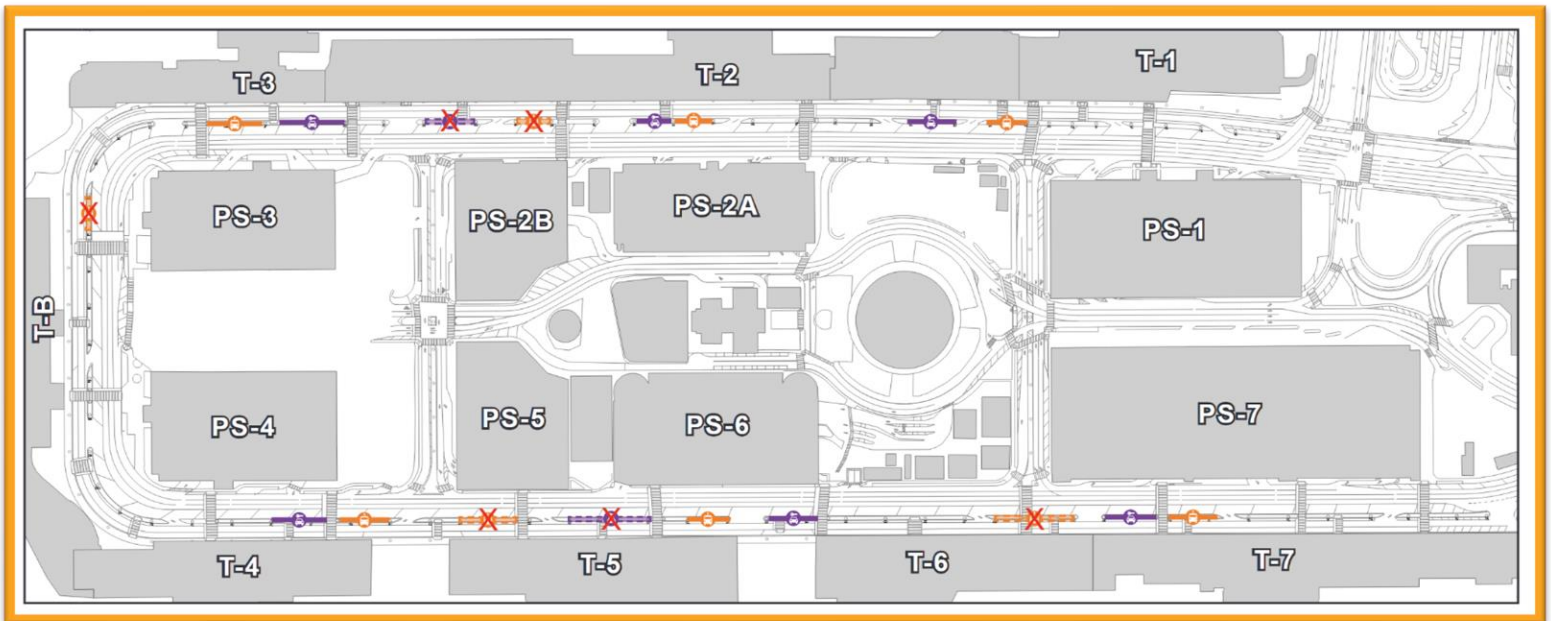


Construction Hot Topics

Week of June 6, 2022

1. Changes to Arrivals Level Outer Curb Ground Transportation

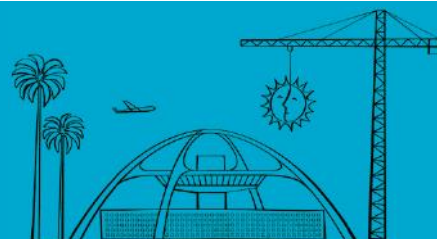
- To better facilitate Ground Transportation operations, the Rental Car (purple) and Shared Ride Van / Charter Bus (orange) shuttle stops located at Arrivals Level Outer Curbs will be updated per the map below
- Changes include the addition of new stops as well as the relocation or removal of some existing stops
- All changes are effective Friday, June 10, 2022
- All signage will be updated to reflect the new shuttle stop locations throughout the Central Terminal Area
- All maps throughout the CTA as well as maps available to guests online will be updated effective this Friday



New locations for Rental Car Shuttles and Shared Ride Vans / Charter Buses as of 6/10/22

Change is in the Air(port).

LAX WAY BETTER. REALLY.

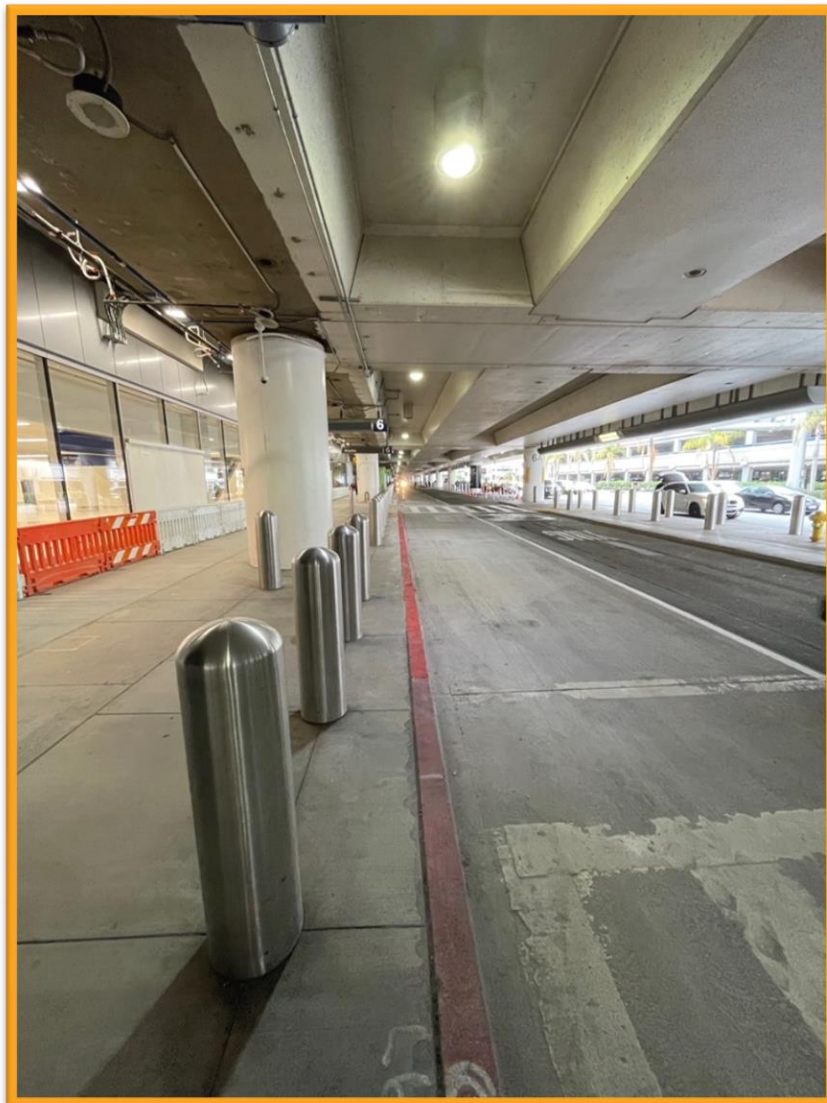


Construction Hot Topics

Week of June 6, 2022

2. Terminal 5.5: Construction Update

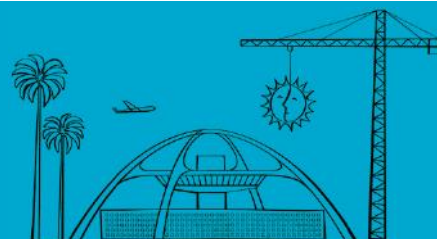
- Last week it was reported that the Arrivals Level construction barricades between Terminals 5 & 6 were removed as part of the Terminal 5.5 Cores & APM Interface project
- Since then, all roadway lanes have also been restored and re-opened after the temporary pedestrian sidewalk at the area was successfully removed
- On the Departures Level, curbside barricades and roadway restrictions still remain but are also scheduled to be removed and the area re-opened in the coming weeks
- The Arrivals Level of the new connector building is currently scheduled to open on June 15; watch Construction Hot Topics for updates on this project and more



Arrivals Level roadway lanes are restored between Terminals 5 & 6

Change is in the Air(port).

LAX WAY BETTER. REALLY.

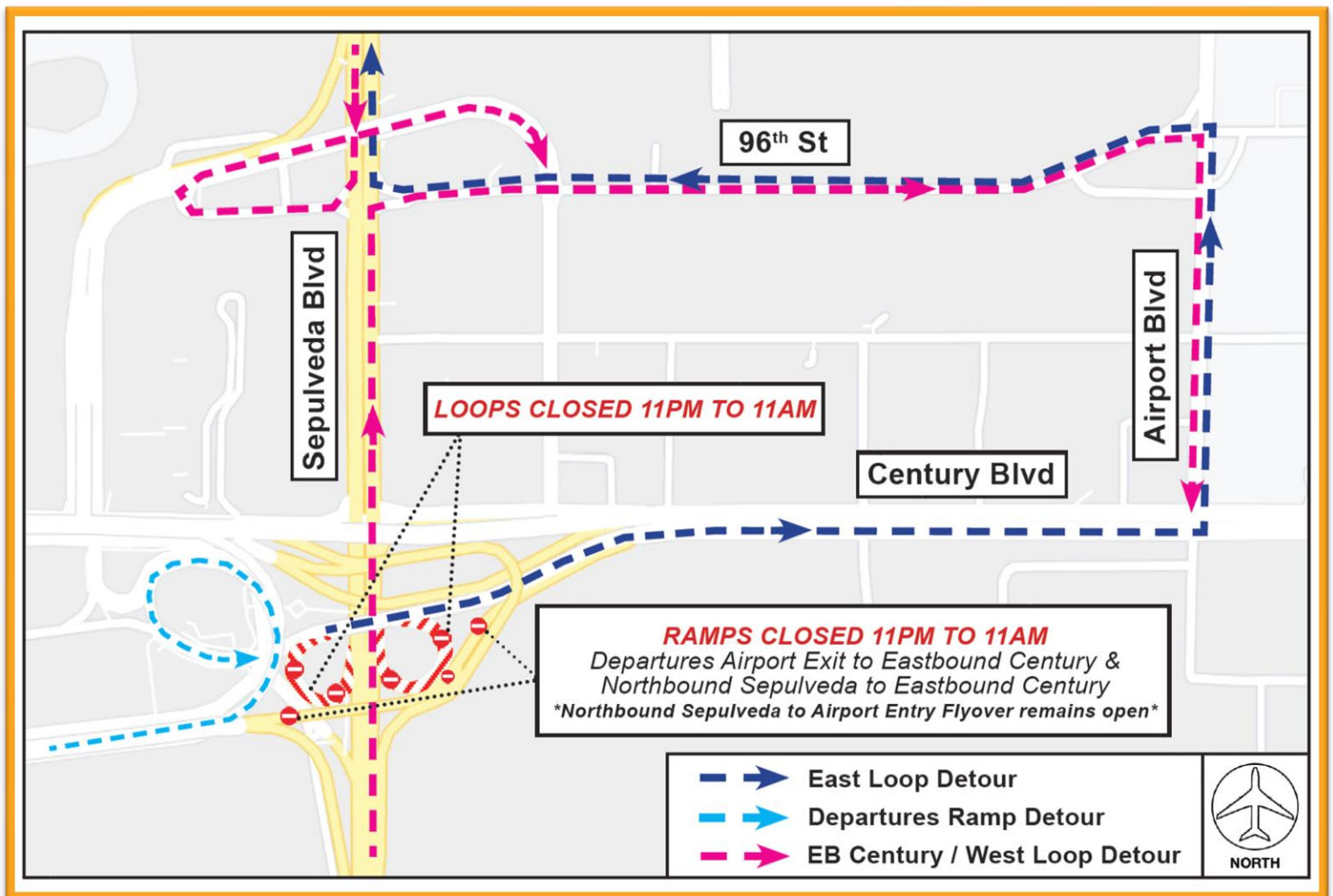


Construction Hot Topics

Week of June 6, 2022

3. Construction Impacts to LAX Entry / Exit

- To facilitate work for the Automated People Mover project, the following areas are scheduled to be closed for 12 continuous hours beginning Saturday, June 11 at 11PM through Sunday, June 12 at 11AM:
 - Eastbound Century Boulevard to northbound Sepulveda Boulevard Loop (East Loop)
 - Southbound Sepulveda Boulevard to eastbound Century Boulevard Loop (West Loop)
 - Northbound Sepulveda Boulevard to eastbound Century Boulevard Ramp
 - Departures Level Airport Exit to eastbound Century Boulevard Ramp
- Traffic will be maintained at all times via the detours below and signage will be posted



Map of 12-hour closure to support APM construction 6/11 – 6/12/22

Change is in the Air(port).

LAX WAY BETTER. REALLY.

