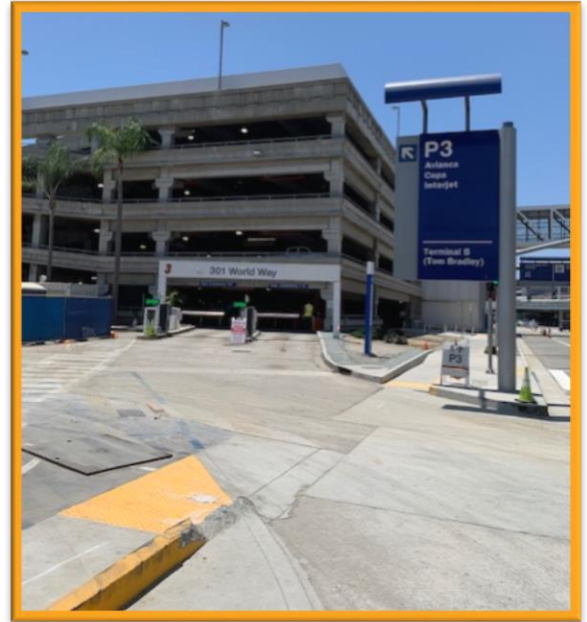


# Construction Hot Topics

Week of July 13, 2020

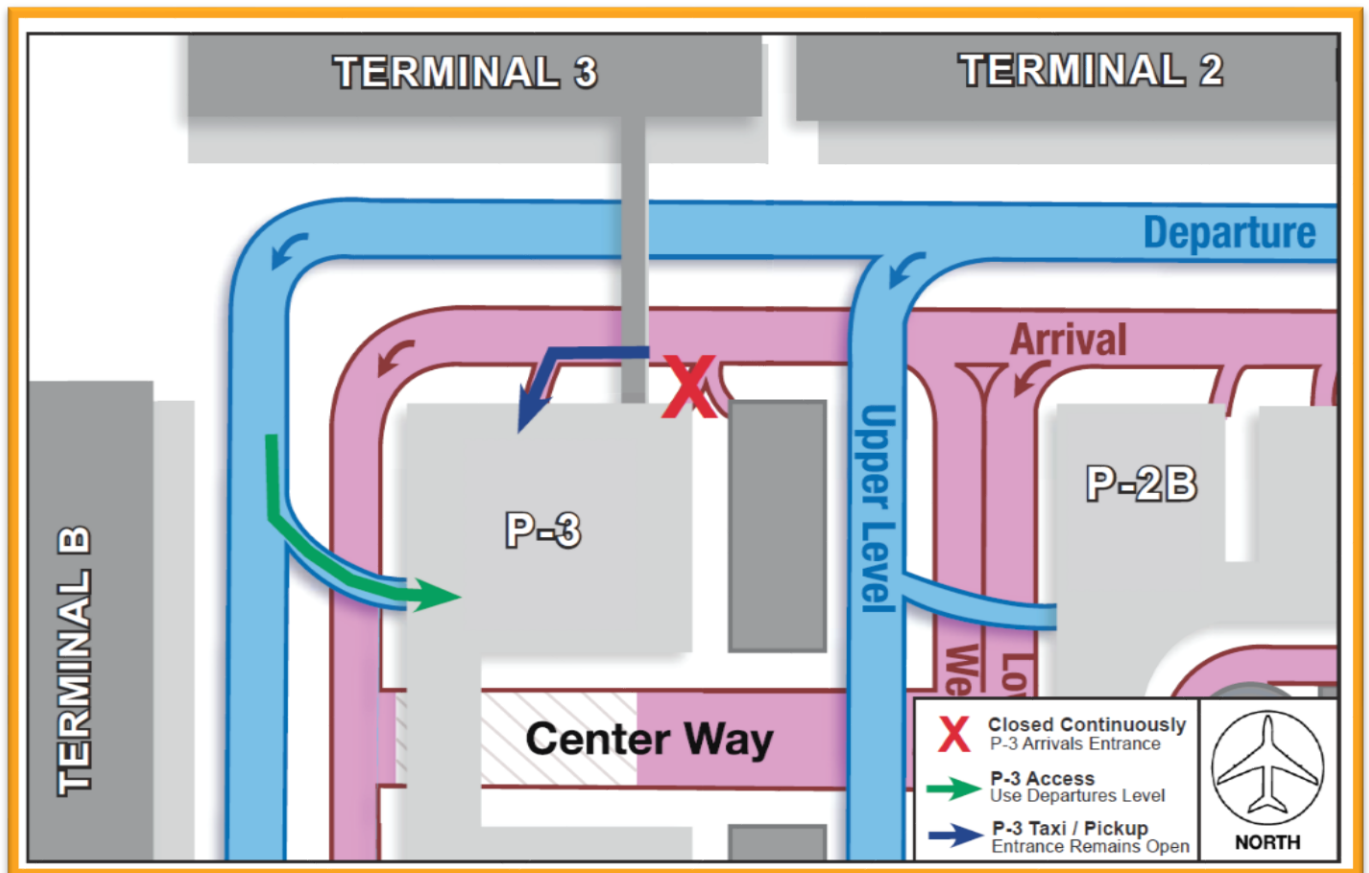
## 1. Parking Structure 3 Ingress Impacts

- Potholing work for the Automated People Mover project will continuously close the Arrivals Level Long Term Parking entrance to PS-3 (eastern most entrance) beginning the night of Monday, July 13 through Friday, July 17
- The Arrivals Level entrance to the Taxi / Passenger Pickup portion of PS-3 remains open and is not impacted by this work
- Vehicles parking in Parking Structure 3 must use the Departures Level entrance; signage is in place to assist with wayfinding



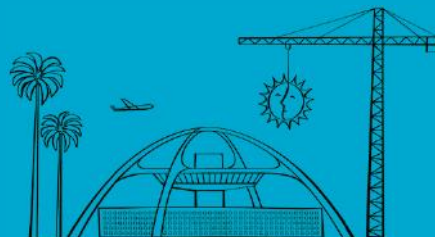
Right: PS-3 Ingress (prior to closing night of 7/13)

Below: Diagram of closure and detours



Change is in the Air(port).

**LAX** WAY BETTER. REALLY.



# Construction Hot Topics

Week of July 13, 2020

## 2. Center Way: Two Lanes Re-Opened for APM Project

- Two lanes on Center Way between Parking Structures 1 and 7 have re-opened during the daytime only (6AM to midnight) as construction on the future East CTA Station progresses into its next phase of work
- Center Way at this area will be completely closed at night (midnight to 6AM) with traffic detoured to World Way South and Parking Structure 1 egress maintained
- Detours and flaggers will be in place at all hours to assist with pedestrian and vehicular wayfinding

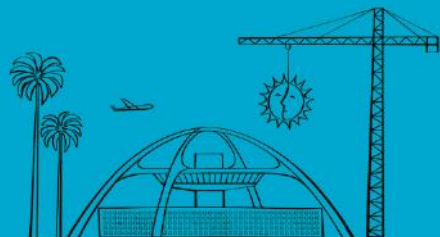


*Center Way lane configuration is changing to facilitate work on the East CTA Station  
Above: Current progress on the station; Below: Rendering of final East CTA Station*



Change is in the Air(port).

**LAX** WAY BETTER. REALLY.



# Construction Hot Topics

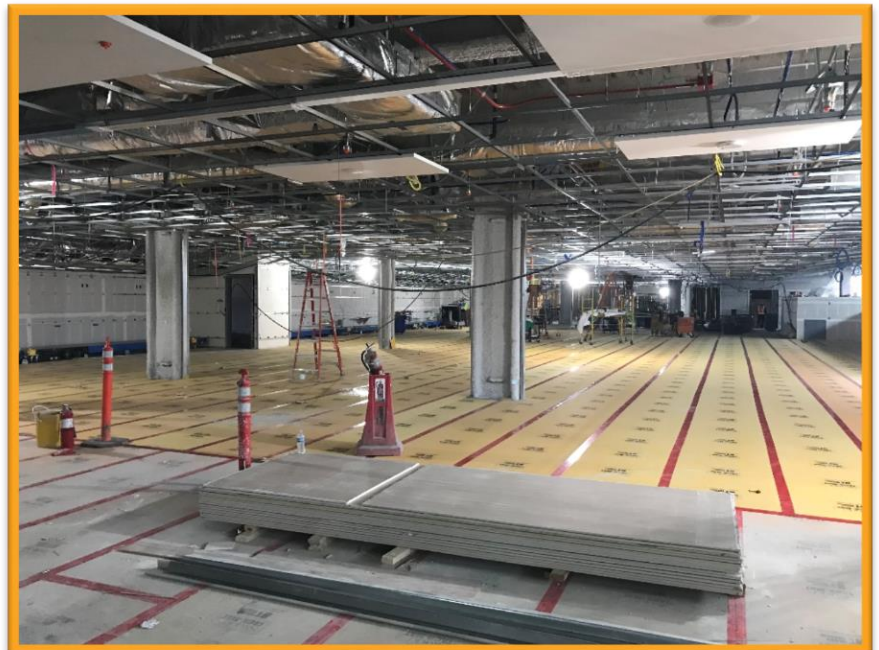
Week of July 13, 2020

## 3. Terminal 1.5: Interior Construction Update

- Work is progressing on the Arrivals and Departures Level interior of the future Terminal 1.5 building, which is expected to reach substantial completion in December 2020
- Pictured below are a future bag claim carousel being installed on the Arrivals Level and a progress photo of Departures Level future check-in area



*Arrivals Level Bag Claim Carousel*



*Departures Level Check-In*

Change is in the Air(port).

**LAX** WAY BETTER. REALLY.

