

CONSTRUCTION HOT TOPICS

#1 TERMINAL 3 DEPARTURES LEVEL CURBSIDE BARRICADES

Departures Level curbside barricades at the Terminal 3 West End will be removed over the coming weeks. Construction barricades will be removed first, with pedestrians then routed back to the original sidewalk. After that is safely completed, work will proceed to remove the protective canopy and temporary sidewalk extension.



PLEASE NOTE

Departures Level curbside barricades between Terminal 3 and Terminal B ("North Knuckle") will remain in place as construction continues on other projects.

 LAX Construction Hotline: 310-649-5292  LAXConstructionHotline@LAWA.org

LAX

flyLAX.com

  @flyLAXairport

 LAInternationalAirport

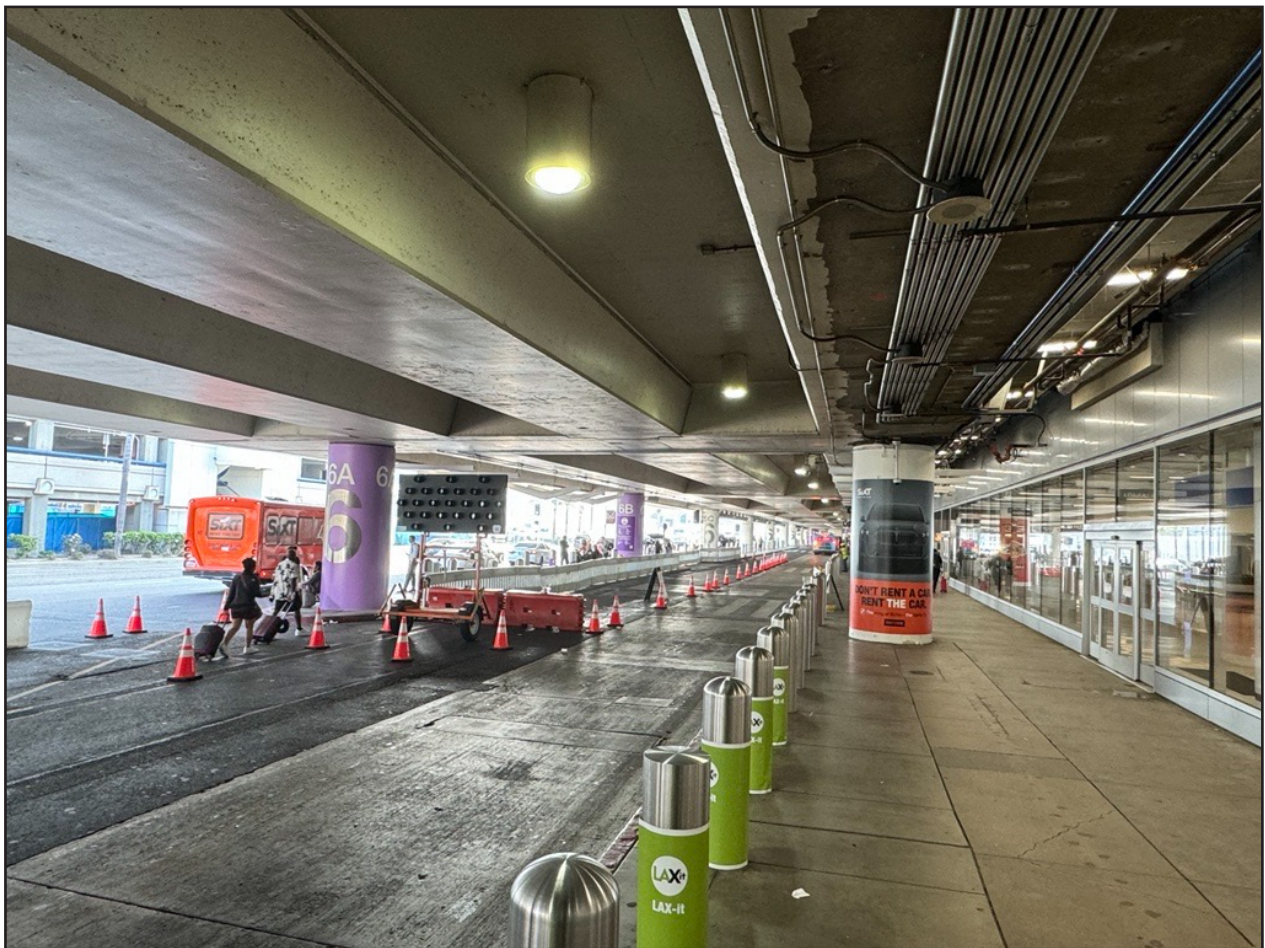
CALM
Coordination and Logistics Management

CONSTRUCTION HOT TOPICS

#2 CTA CURBSIDE IMPROVEMENT PROGRAM

To facilitate work for the CTA Curbside Improvement Program, intermittent lane restrictions may be in place at Terminal 6 (Arrivals Level Inner Lanes).

Please watch Construction Hot Topics for more information about this project as it progresses, including potential impacts.



PICTURED ABOVE

Work occurring on Terminal 6 Inner Lanes for the CTA Curbside Improvement Program.

 LAX Construction Hotline: 310-649-5292  LAXConstructionHotline@LAWA.org

LAX

flyLAX.com

  @flyLAXairport

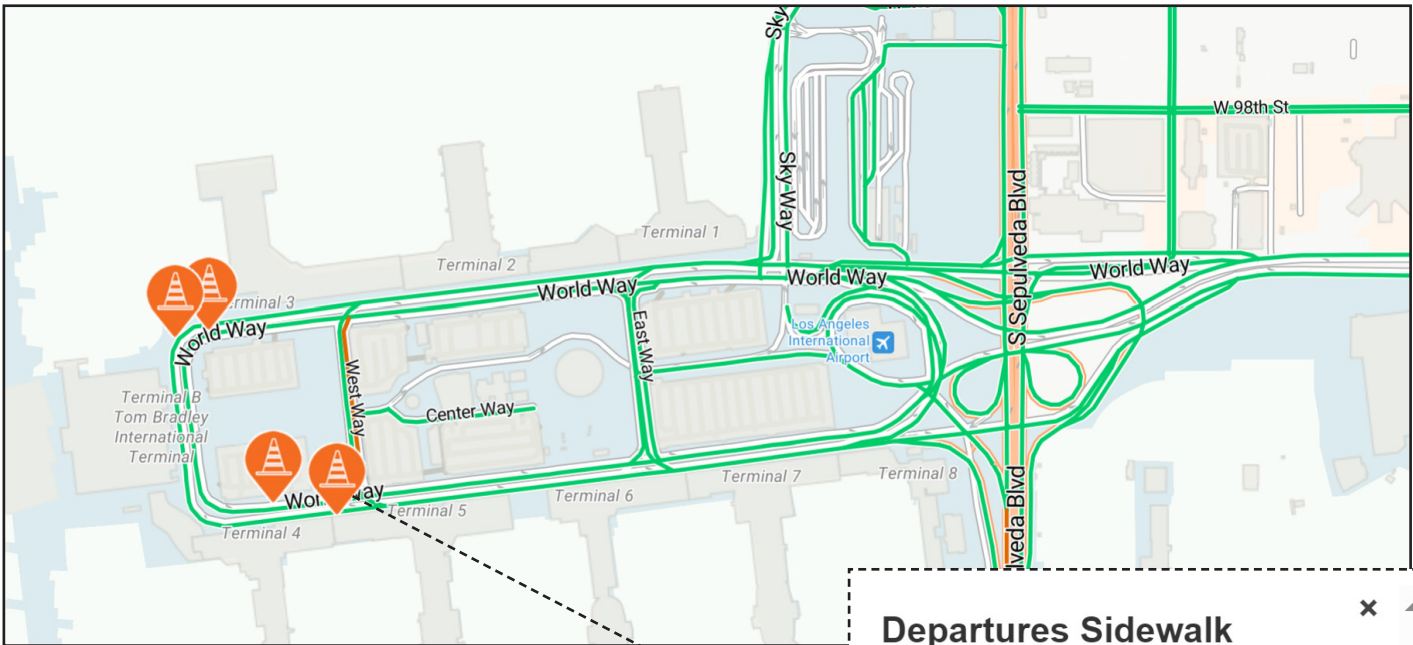
 LAInternationalAirport

CALM
Coordination and Logistics Management

CONSTRUCTION HOT TOPICS

#3 LAX 24/7 CTA IMPACTS MAP

With multiple projects requiring lane restrictions in the Central Terminal Area, guests and staff are reminded of the LAX 24/7 CTA Impacts / Live Airport Traffic Conditions Map available at FlyLAX.com.



**Departures Sidewalk
Bumpout:
World Way South Adjacent to
Terminal 4 (Curbside)**

PICTURED ABOVE

The map is updated as-needed to reflect impactful closures in the Central Terminal Area, with real-time traffic integration to assist with planning ahead.



LAX Construction Hotline: 310-649-5292 | LAXConstructionHotline@LAWA.org



flyLAX.com

[@flyLAXairport](https://www.instagram.com/flyLAXairport)

[LAInternationalAirport](https://www.facebook.com/LAInternationalAirport)



CONSTRUCTION HOT TOPICS

#4 AUGUST 2024: 24/7 CTA LANE RESTRICTIONS

PLEASE NOTE:

This map only reflects 24/7 continuous lane closures in the CTA; other nightly lane closures / sidewalk restrictions may be in place to facilitate construction activities.

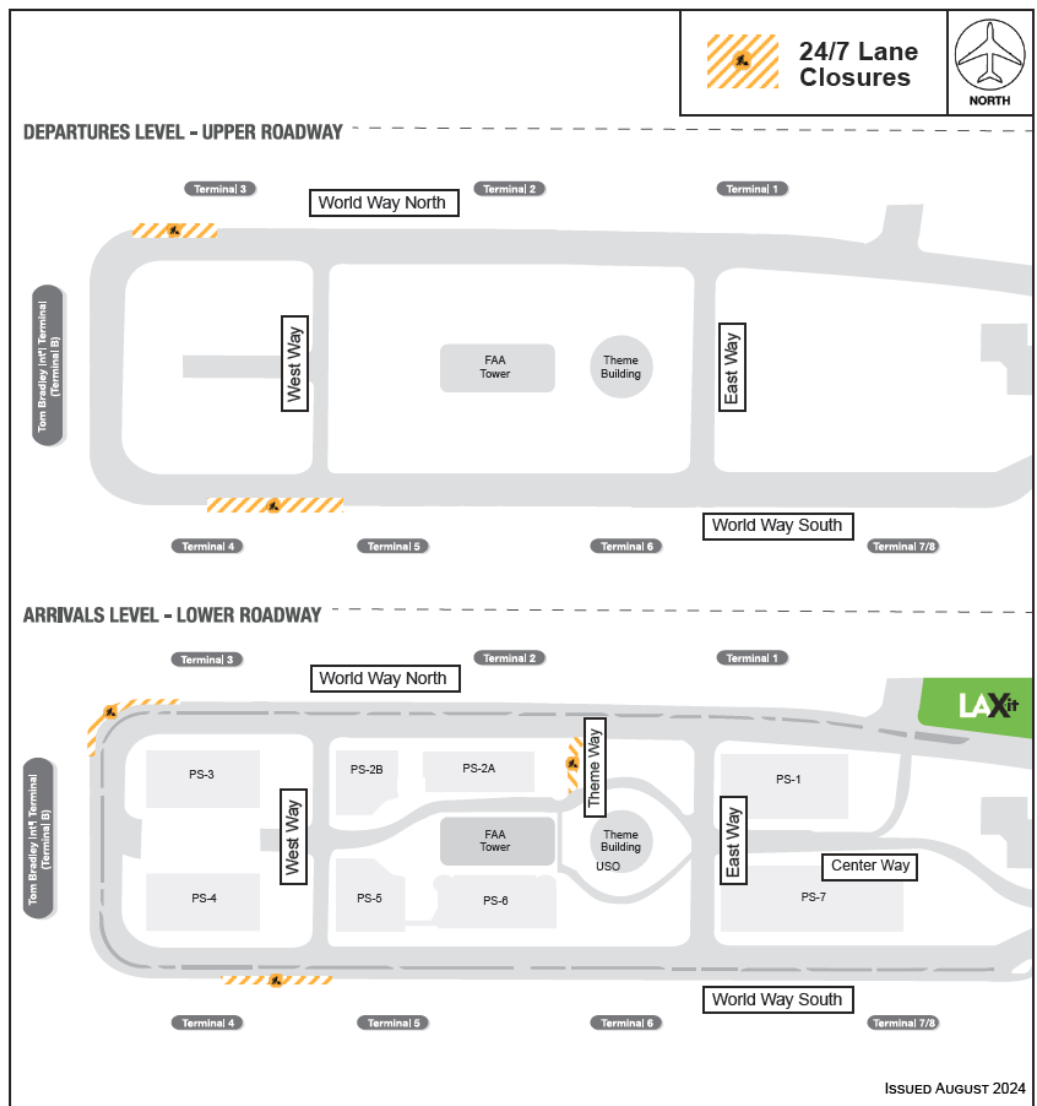
ACCESS MAINTAINED:

Traffic around the Central Terminal Area will be maintained at all times, as well as access to passenger pick-up and drop-off.

PLAN AHEAD:

Motorists should plan ahead for potential delays.

The map below is a collective snapshot of all scheduled 24/7 lane restrictions for CTA Departures and Arrivals Level Roadways for the month of August 2024.



LAX Construction Hotline: 310-649-5292 | LAXConstructionHotline@LAWA.org



flyLAX.com

@flyLAXairport

LAInternationalAirport

