

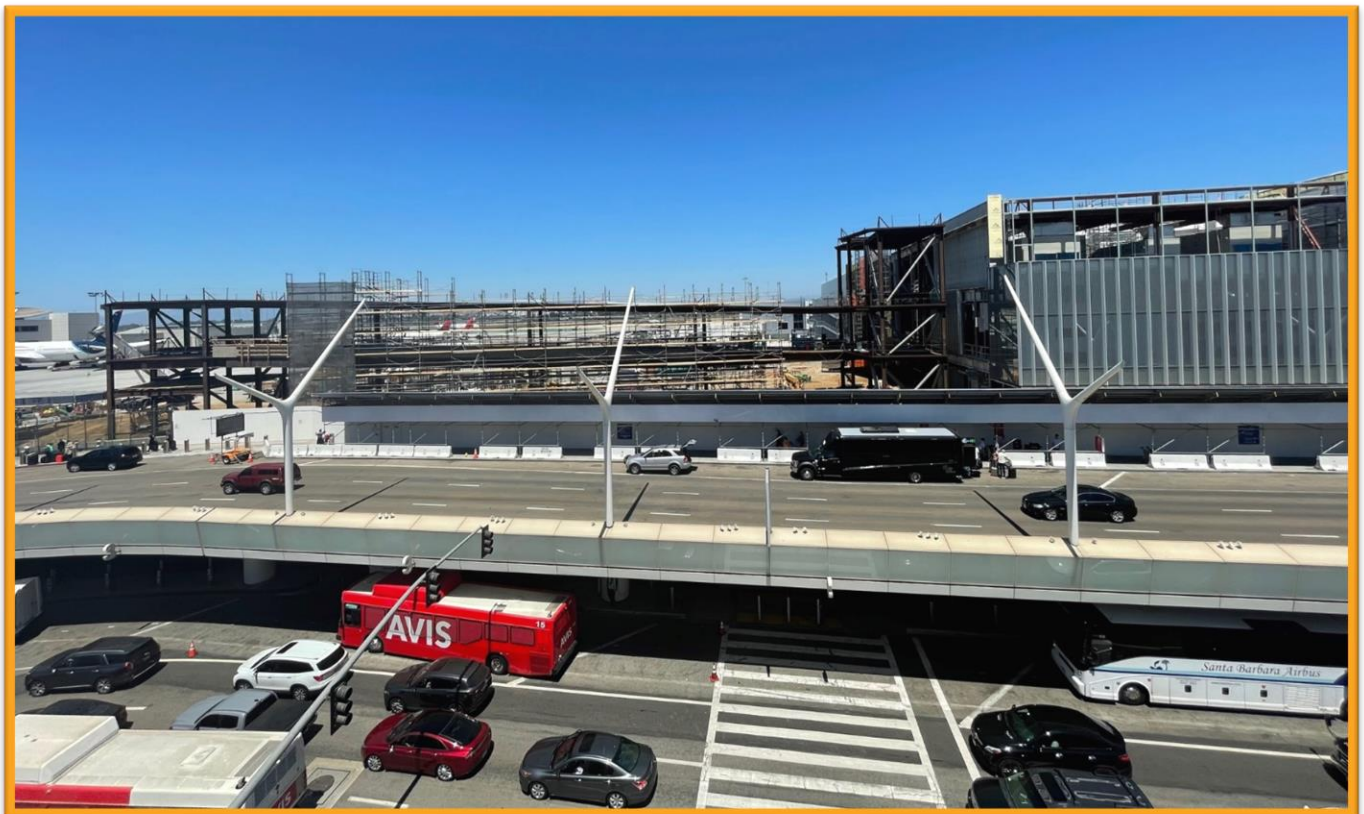
# Construction Hot Topics

Week of August 15, 2022

## 1. Terminal 3 / B Connector: Construction Update

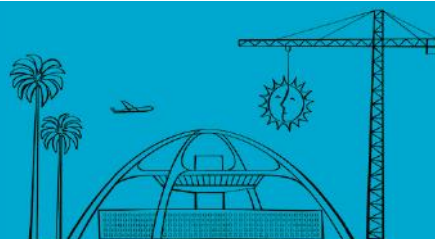
- As part of the Terminal 2 / 3 Modernization Program, a post-security connection is being built between Terminal 3 and Terminal B
- Upon completion of this connector, guests will be able to walk from Terminal 1 to Terminal 8 (between ALL terminals) without leaving the secure area and having to be re-screened by TSA
- Construction can be seen at the North Knuckle (area between Terminal 3 and Terminal B) in the Central Terminal Area

*A view from inside the future Terminal 3 / B Connector (right, courtesy of Hensel Phelps) and of the structure from the roof of Parking Structure 3*



Change is in the Air(port).

**LAX** WAY BETTER. REALLY.

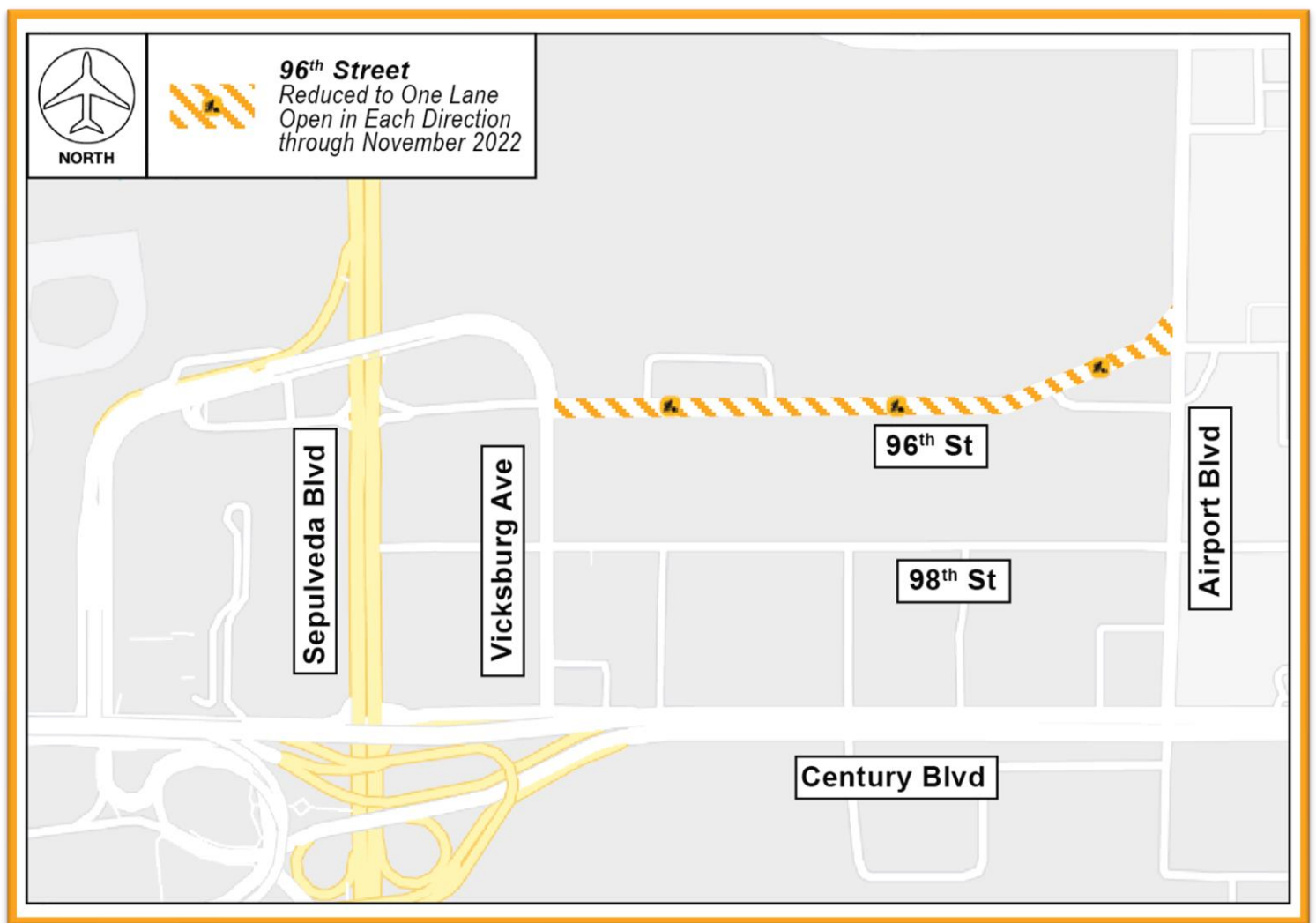


# Construction Hot Topics

Week of August 15, 2022

## 2. Roadway Impacts: 96<sup>th</sup> Street Reduced Lanes

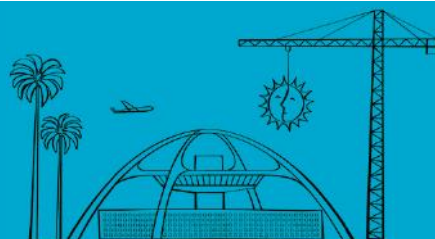
- To facilitate roadway improvements for the Automated People Mover project, 96<sup>th</sup> Street will be reduced to one eastbound and one westbound lane open between Airport Boulevard and Vicksburg Avenue through November 2022
- Traffic will be maintained at all times, including access to the Vicksburg Avenue flyover for motorists accessing LAX via that entrance
- During periods of heavy constructions, guests remain advised to plan ahead and prepare for potential delays; always watch for posted signage and use caution when traveling near construction areas



*96<sup>th</sup> Street between Airport Boulevard and Vicksburg Avenue is reduced to one open lane in each direction through November 2022*

Change is in the Air(port).

**LAX** WAY BETTER. REALLY.





# Construction Hot Topics

Week of August 15, 2022

## 3. Terminal B & Automated People Mover: Construction Update

- In last week's Construction Hot Topics, updates were shared on the progress of the APM's West Central Terminal Area Station as well as on construction of the Terminal B Vertical Core
- Pictured below, you can see the West CTA Station in the reflection of the exterior glass panels at the north end of Terminal B, which is open to guests as restrictions remain in place at the terminal's south end
- The landscape of LAX's Central Terminal Area is constantly changing; watch Construction Hot Topics for information and updates on impacts and progress!



*Construction of the APM's West CTA Station is seen in the reflection of exterior glass panels at the north end of Tom Bradley International Terminal*

Change is in the Air(port).

**LAX** WAY BETTER. REALLY.

