

CONSTRUCTION HOT TOPICS

#1 AUTOMATED PEOPLE MOVER CONSTRUCTION MILESTONE

LAX received the final remaining four Automated People Move train cars last week, marking a major milestone for the project.

This brings the total number of APM train cars on site to 44.

Next, the new cars will join the rest of the fleet in testing on the APM's elevated guideway.

The project is expected to be complete by December 8, 2025 with service scheduled to begin in January 2026.



PICTURED ABOVE

LAX will be the first U.S. airport to use the INNOVIA 300 APM cars, which feature many sustainable features such as fully recyclable aluminum shells, a regenerative braking system, and a design to eliminate hazardous substances and toxic emissions.

 LAX Construction Hotline: 310-649-5292  LAXConstructionHotline@LAWA.org

LAX

flyLAX.com

  @flyLAXairport

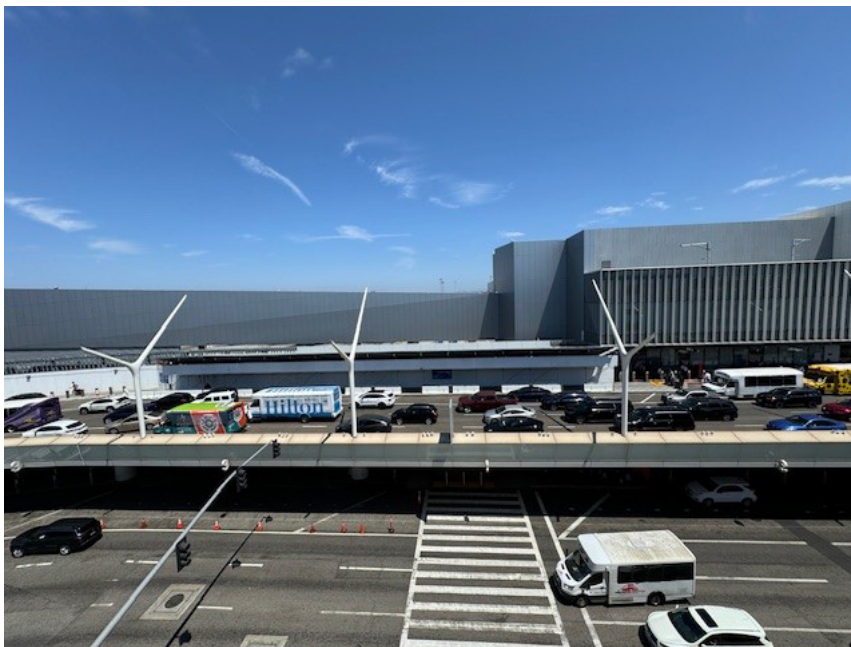
 LAInternationalAirport

CALM
Coordination and Logistics Management

CONSTRUCTION HOT TOPICS

#2

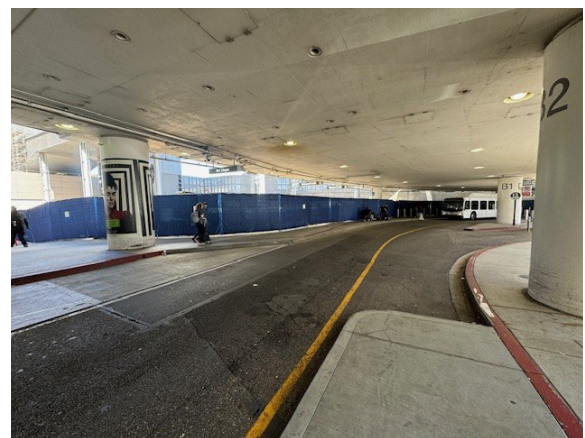
CURBSIDE CONSTRUCTION BARRICADE REMOVAL AT TERMINAL 3, DEPARTURES & ARRIVALS LEVEL



Departures Level curbside barricades at the west end of Terminal 3 are being removed over the coming weeks. The barricades will be removed first, with pedestrians then routed back to the existing sidewalk. After that, work will proceed to remove the protective canopy and temporary sidewalk extension on the Departures Level, followed by the removal of temporary barricades and the sidewalk extension on the Arrivals Level.

PLEASE NOTE

Curbside barricades between Terminal 3 and Terminal B (the "North Knuckle") will remain in place on both the Arrivals and Departures Levels until Q4 2024 as construction continues on other projects.



 LAX Construction Hotline: 310-649-5292  LAXConstructionHotline@LAWA.org

LAX

flyLAX.com

  @flyLAXairport

 LAInternationalAirport

CALM
Coordination and Logistics Management

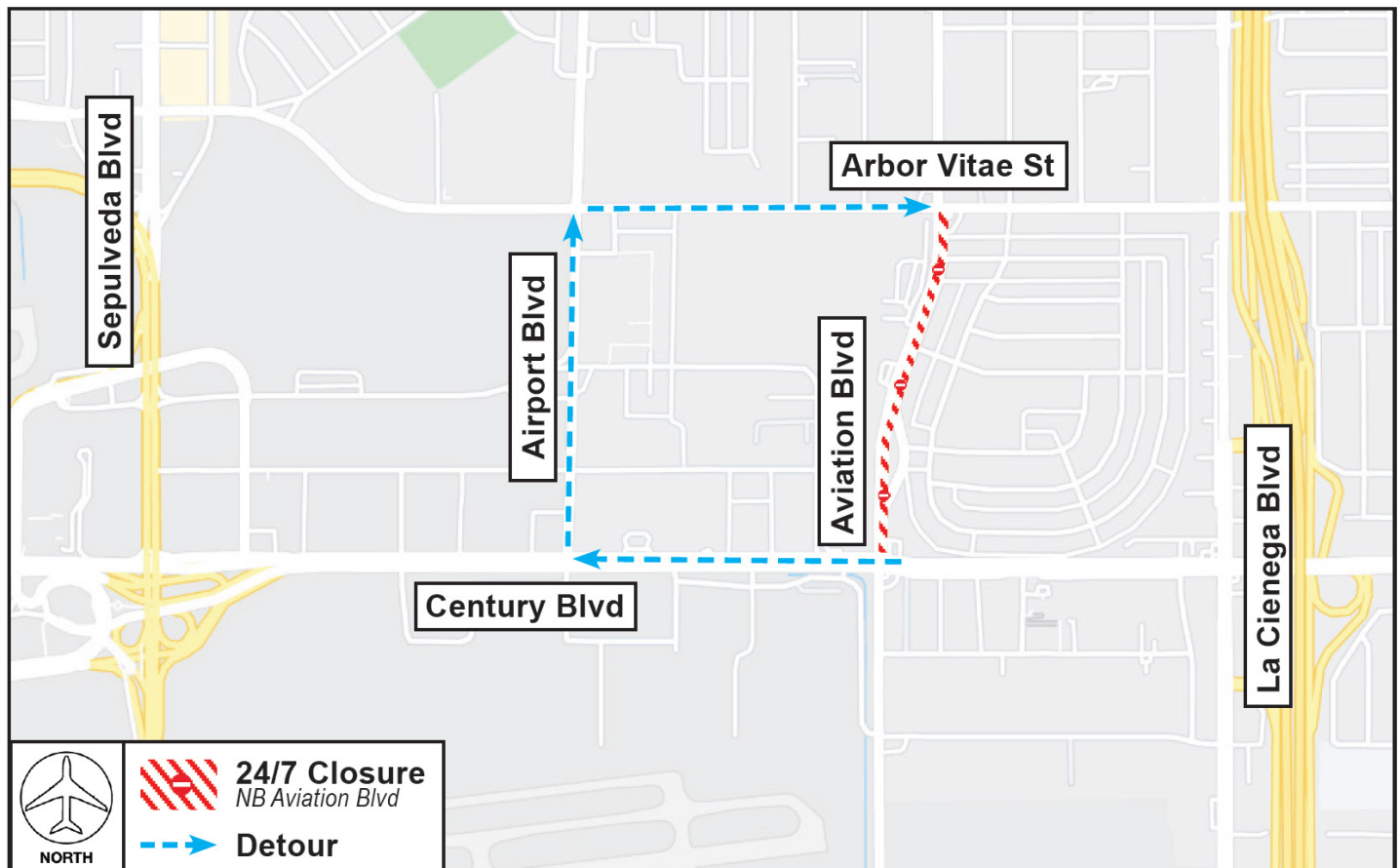
CONSTRUCTION HOT TOPICS

#3 EXTENDED: AVIATION BOULEVARD RESTRICTIONS THROUGH END OF YEAR

To facilitate construction for the Landside Access Modernization Program, northbound Aviation Boulevard between Arbor Vitae Street and Century Boulevard will remain closed continuously (24/7) through December 2024.

Please note: Nightly full closures of both north- and southbound lanes at this portion of Aviation Boulevard may be implemented on an as-needed basis for construction activities (limited overnight hours between 9PM and 5AM).

Detours remain in place for all closures; watch Construction Hot Topics for updates.



LAX Construction Hotline: 310-649-5292 | LAXConstructionHotline@LAWA.org



flyLAX.com

@flyLAXairport

LAInternationalAirport



CONSTRUCTION HOT TOPICS

#4 AUGUST 2024: 24/7 CTA LANE RESTRICTIONS

PLEASE NOTE:

This map only reflects 24/7 continuous lane closures in the CTA; other nightly lane closures / sidewalk restrictions may be in place to facilitate construction activities.

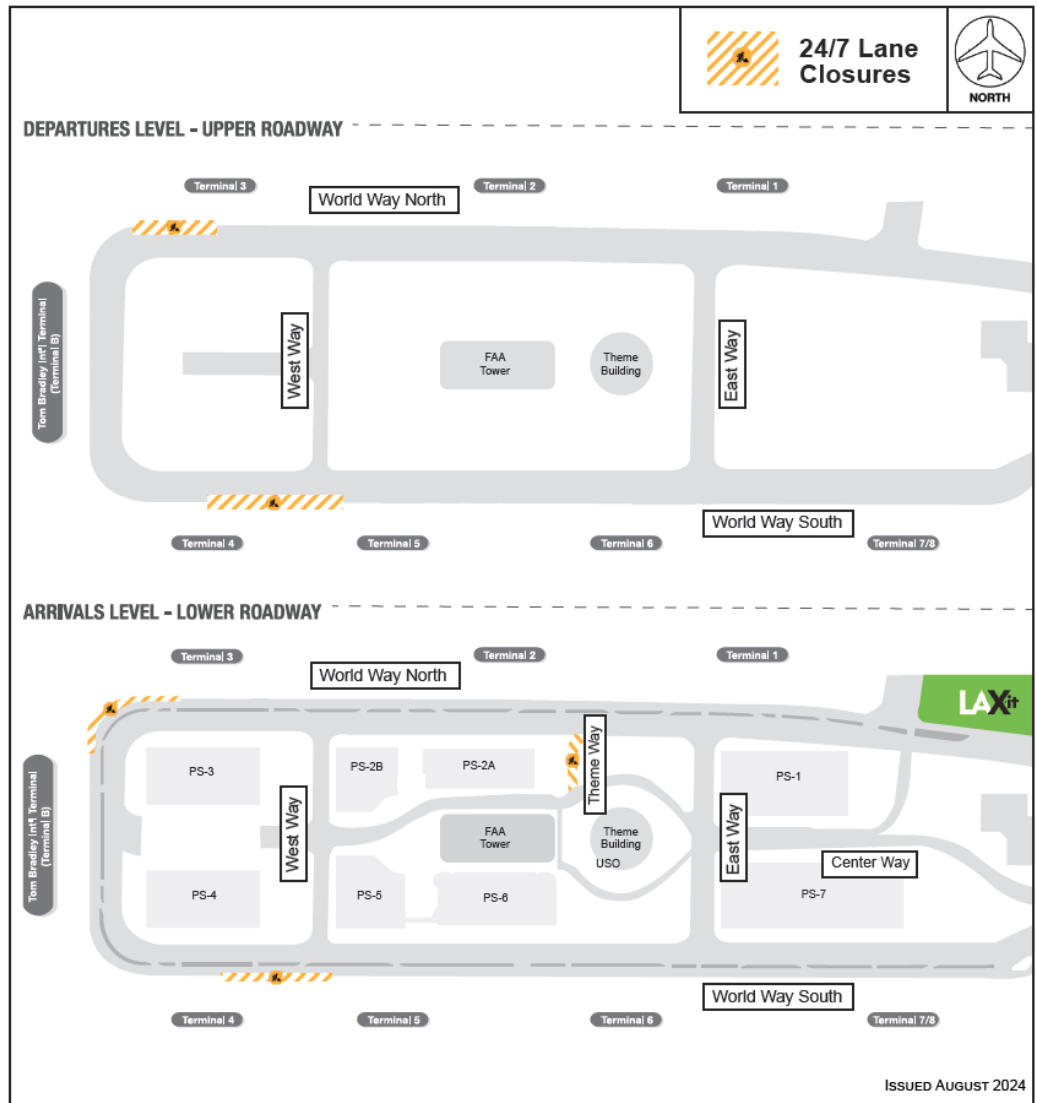
ACCESS MAINTAINED:

Traffic around the Central Terminal Area will be maintained at all times, as well as access to passenger pick-up and drop-off.

PLAN AHEAD:

Motorists should plan ahead for potential delays.

The map below is a collective snapshot of all scheduled 24/7 lane restrictions for CTA Departures and Arrivals Level Roadways for the month of August 2024.



LAX Construction Hotline: 310-649-5292 | LAXConstructionHotline@LAWA.org



flyLAX.com

@flyLAXairport

LAInternationalAirport

