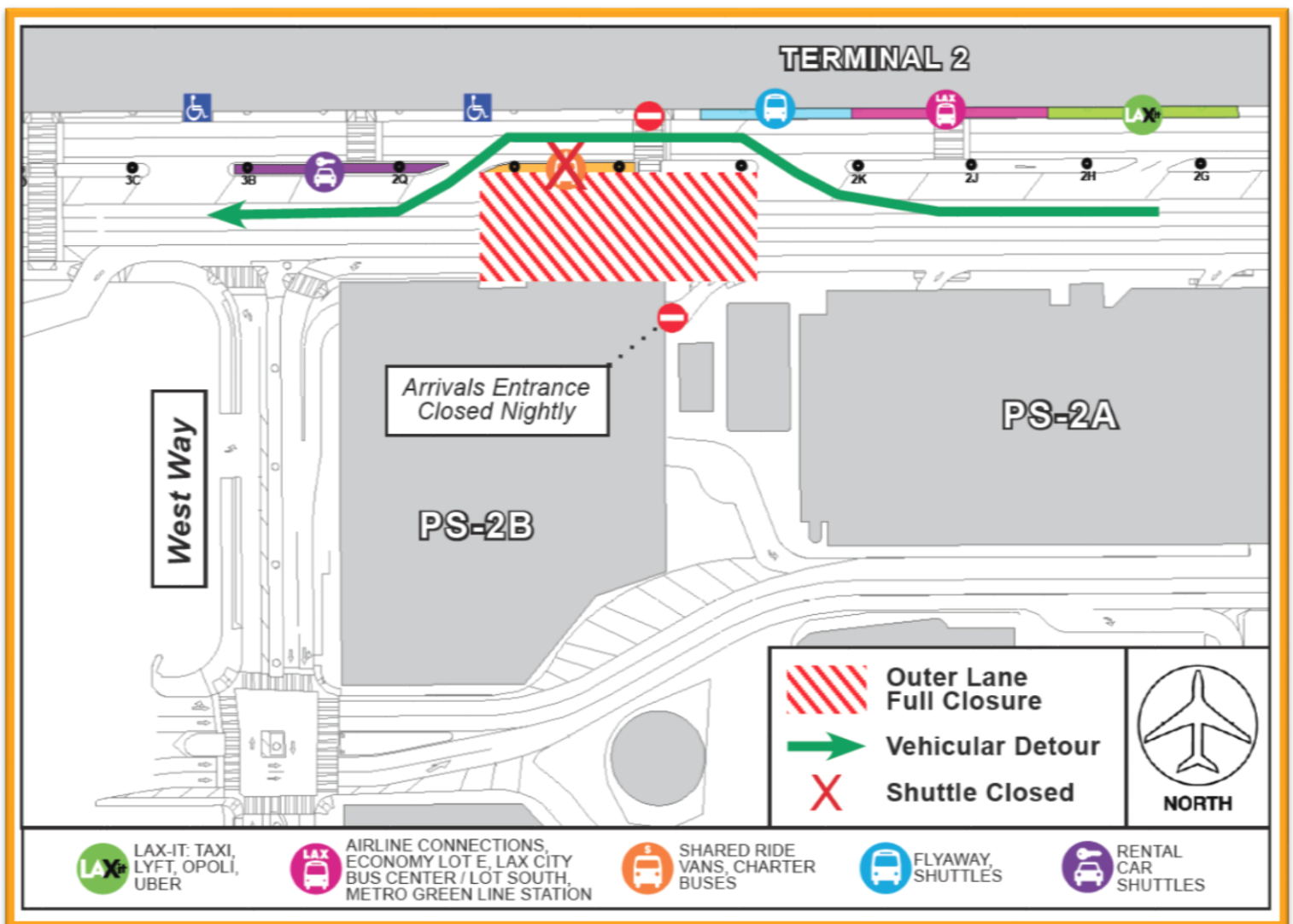


Construction Hot Topics

Week of September 13, 2021

1. Terminal 2.5: Arrivals Level Nightly Outer Lane Closures

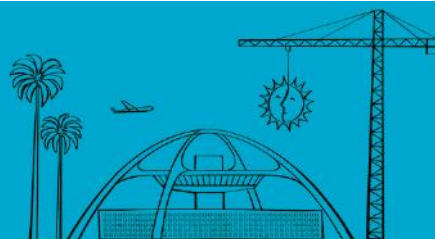
- To facilitate the construction of the APM Pedestrian Bridge at Terminal 2.5, nightly closures of Arrivals Level Outer Lanes will occur between 12AM and 6AM starting this week
- All traffic will be detoured to the Inner Lanes around construction
- The crosswalk & Shared Ride shuttle stop at Terminal 2 will be closed with guests directed to the stop at Terminal 1.5
- Signage and flaggers will be in place to assist with vehicular and pedestrian wayfinding
- Extended nightly work hours will be in place for future Outer Lane closures; watch Construction Hot Topics for updates



Terminal 2.5: Arrivals Outer Lane Nightly Closures for APM Pedestrian Bridge

Change is in the Air(port).

LAX WAY BETTER. REALLY.



Construction Hot Topics

Week of September 13, 2021

2. Terminal 1: Betcha Burger

- Cassell's Hamburgers, located in Terminal 1 near Airline Gate 12A, is closed as it undergoes a rebrand to Los Angeles Betcha Burgers & Bar
- While crews will work nightly to facilitate work for the new concession, operations will be closed 24/7
- Additional concession options are open and available throughout Terminal 1 for passengers
- Please visit FlyLAX.com for more information on in-terminal dining options

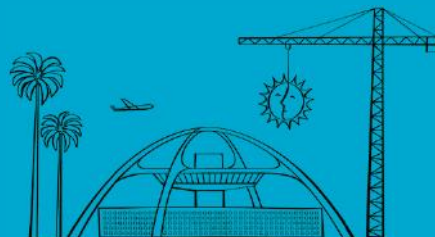


Terminal 1: Concession changes occurring post-security



Change is in the Air(port).

LAX WAY BETTER. REALLY.

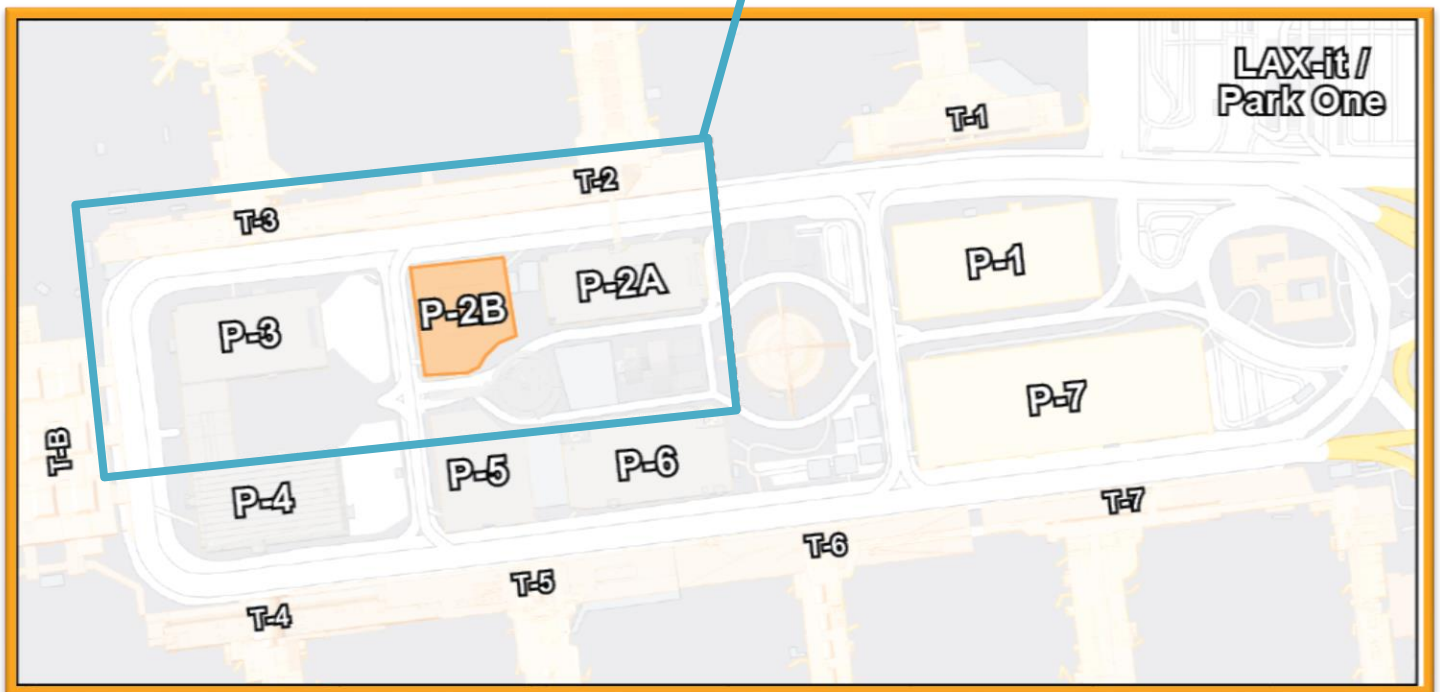
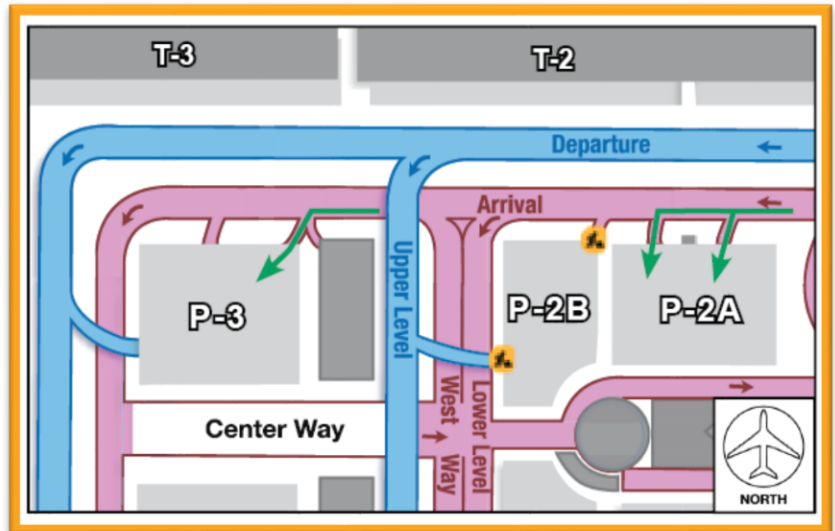


Construction Hot Topics

Week of September 13, 2021

3. Parking Structure 2B: September Impacts

- As a reminder, multiple projects will impact the Arrivals and Departures Level entrances to Parking Structure 2B throughout September 2021
- Arrivals Entrance:
 - Now – 9/17: Closed 24/7
 - 9/17 – 9/24: Closed nightly from 12AM to 6AM
- Departures Entrance:
 - 9/17 – 9/24: Closed 24/7
- Alternative parking options include Park One, Parking Structure 2A or Parking Structure 3



Parking Structure 2B: September Ingress Impacts

Change is in the Air(port).

LAX WAY BETTER. REALLY.

