

# CONSTRUCTION HOT TOPICS

## #1

### NEW TRAFFIC SIGNAL & CROSSWALK: EAST WAY / CENTER WAY (ARRIVALS)

New traffic signals have been activated at the intersection of East Way and Center Way as part of the APM Project. Additionally, new crosswalk configurations are in place, including pedestrian push buttons. Please use caution when navigating new traffic patterns.



## PICTURED ABOVE

A look at the new traffic signals and crosswalks installed at East Way and Center Way.  
Photo perspective: Facing east on Center Way South, exiting Surface Lot 6.

 LAX Construction Hotline: 310-649-5292  LAXConstructionHotline@LAWA.org

**LAX**

flyLAX.com

  @flyLAXairport

 LAInternationalAirport

**CALM**  
Coordination and Logistics Management

# CONSTRUCTION HOT TOPICS

## #2 LANE RESTRICTIONS: PAVING AT 96TH ST AND AIRPORT BLVD

To facilitate roadway paving by the APM Project, lane restrictions will be in place on Airport Blvd at the intersection of 96th St this weekend, Friday 9/27 through Sunday 9/29. At least one lane in both directions on Airport Blvd will be maintained at all times. Flaggers and signage will be in place to facilitate traffic.



### PLEASE NOTE

96th St between Vicksburg Ave & 96th PI is eastbound only; 96th St between 96th PI & Airport Blvd is closed (APM construction activities). Local access maintained for businesses at this area.

LAX Construction Hotline: 310-649-5292 LAXConstructionHotline@LAWA.org



flyLAX.com

@flyLAXairport

LAInternationalAirport

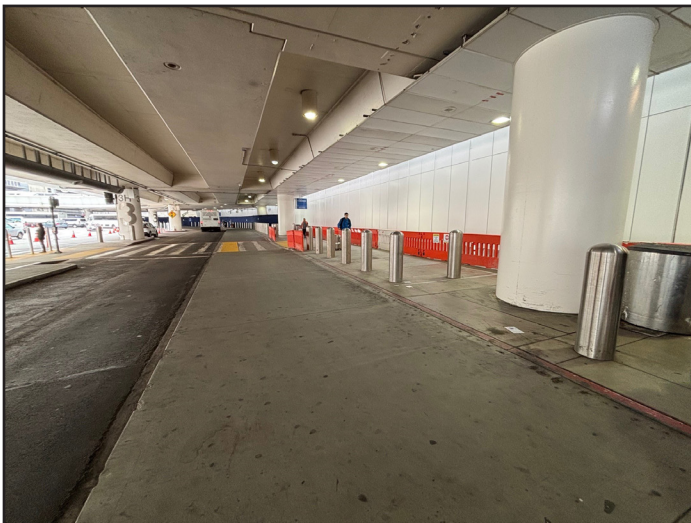


# CONSTRUCTION HOT TOPICS

## #3

### CURBSIDE CONSTRUCTION BARRICADE REMOVAL: TERMINAL 3, DEPARTURES & ARRIVALS LEVEL

Curbside construction barricades at the west end of Terminal 3 (both levels) have been successfully removed. Next, crews will work during overnight hours to demolish and remove the temporary pedestrian walkway, starting with the Arrivals Level, with pedestrians utilizing the existing sidewalk.



Arrivals Level



Departures Level

## PLEASE NOTE

Curbside barricades between Terminal 3 and Terminal B ("North Knuckle") will remain in place on both the Arrivals and Departures Levels until Q4 2024 as construction continues on other projects.

 LAX Construction Hotline: 310-649-5292  LAXConstructionHotline@LAWA.org

**LAX**

flyLAX.com

  @flyLAXairport

 LAInternationalAirport

**CALM**  
Coordination and Logistics Management

# CONSTRUCTION HOT TOPICS

## #4 TERMINAL 4 PED BRIDGE CLOSURE & BARRICADE REMOVAL

Please be advised of the following major construction ongoing at Terminal 4 throughout the next month as crews work to (1) demolish the existing pedestrian bridge at Terminal 4 / Parking Structure 4, and (2) remove Arrivals Level curbside barricades between Terminals 4 & 5.

As part of the APM Project, the existing pedestrian bridge between T-4 and PS-4 is now permanently closed for demolition (scheduled for mid-October 2024); alternate routes and detour signage are in place between T-4 and PS-4.



As work on the American Airlines T4/5 Modernization Program progresses to its next stage, curbside Arrivals Level barricades and the temporary sidewalk extension are scheduled to be removed over the coming weeks. Watch Construction Hot Topics for more information about future phases of work for this project, including impacts, changes to path of travel, and more!

 LAX Construction Hotline: 310-649-5292  LAXConstructionHotline@LAWA.org

**LAX**

flyLAX.com

  @flyLAXairport

 LAInternationalAirport

**CALM**  
Coordination and Logistics Management

# CONSTRUCTION HOT TOPICS

## #5 SEPTEMBER 2024: 24/7 CTA LANE RESTRICTIONS

### PLEASE NOTE:

This map only reflects 24/7 continuous lane closures in the CTA; other nightly lane closures / sidewalk restrictions may be in place to facilitate construction activities.

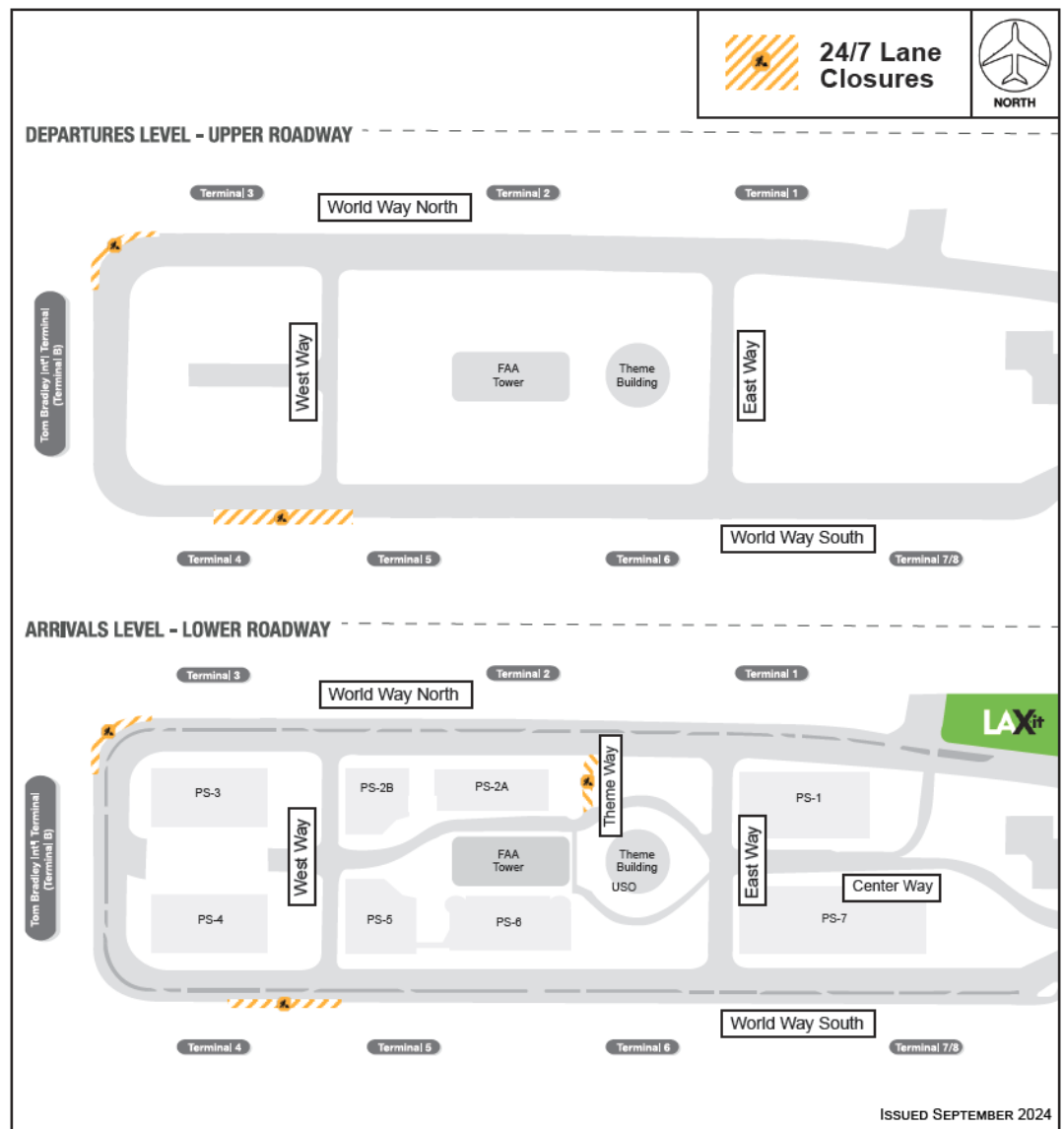
### ACCESS MAINTAINED:

Traffic around the Central Terminal Area will be maintained at all times, as well as access to passenger pick-up and drop-off.

### PLAN AHEAD:

Motorists should plan ahead for potential delays.

The map below is a collective snapshot of all scheduled 24/7 lane restrictions for CTA Departures and Arrivals Level Roadways for the month of September 2024.



LAX Construction Hotline: 310-649-5292 | LAXConstructionHotline@LAWA.org



flyLAX.com

@flyLAXairport

LAInternationalAirport

