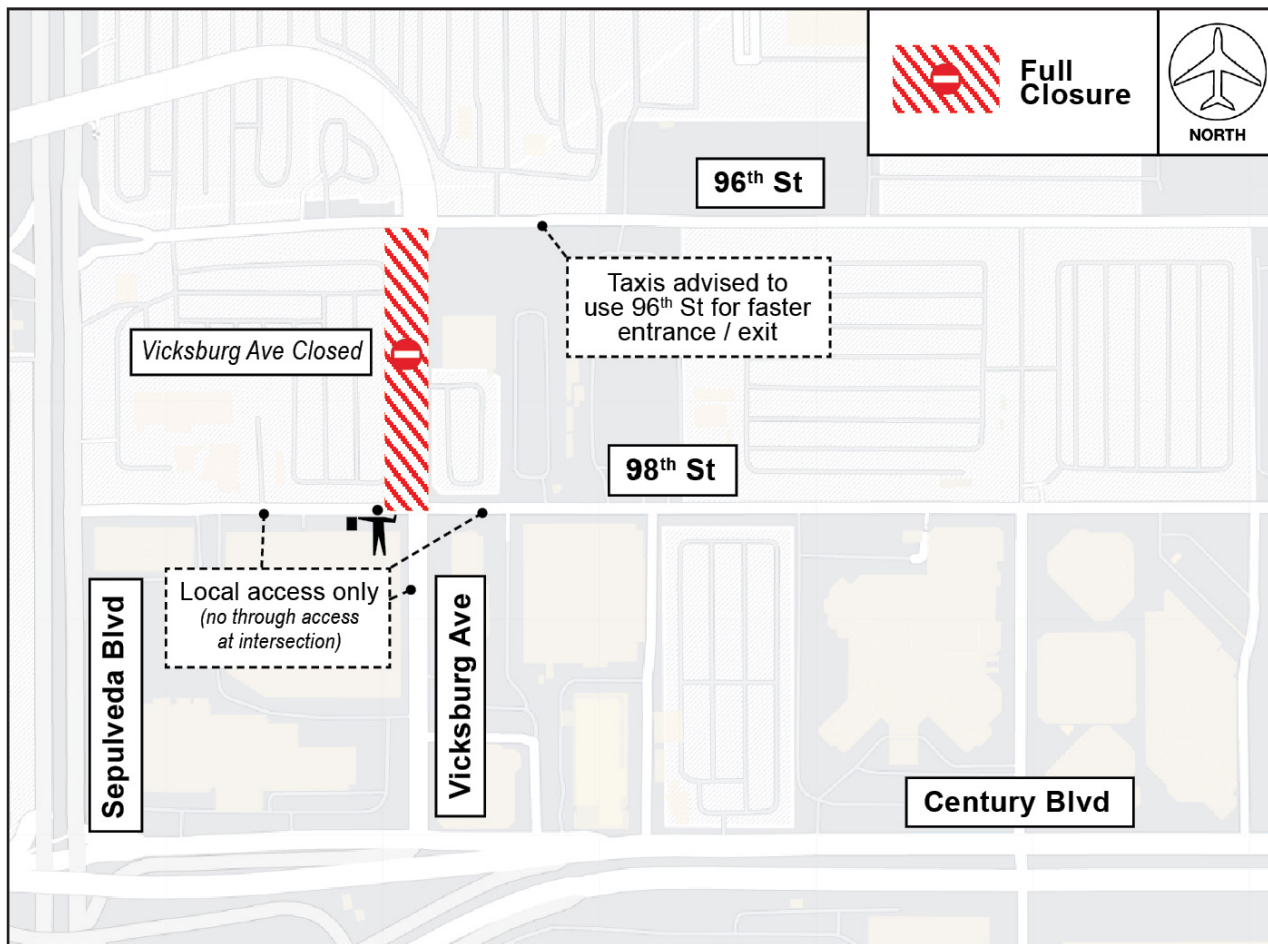


CONSTRUCTION HOT TOPICS

#1 SCHEDULED CLOSURE OF VICKSBURG AVE

TO FACILITATE THE INSTALLATION OF AN UNDERGROUND UTILITY VAULT FOR THE LANDSIDE ACCESS MODERNIZATION PROGRAM, VICKSBURG AVE BETWEEN 96TH AND 98TH STREETS IS SCHEDULED TO BE CLOSED THIS UPCOMING WEEKEND, OCTOBER 27 - 30. FLAGGERS AND DETOUR SIGNAGE WILL BE IN PLACE TO ASSIST WITH THE MAINTENANCE OF TRAFFIC.



PLEASE NOTE:

Portions of 98th St and Vicksburg Ave will be open for local access only;
There will be no through access on 98th St at Vicksburg Ave.



LAX Construction Hotline: 310-649-5292 LAXConstructionHotline@LAWA.org

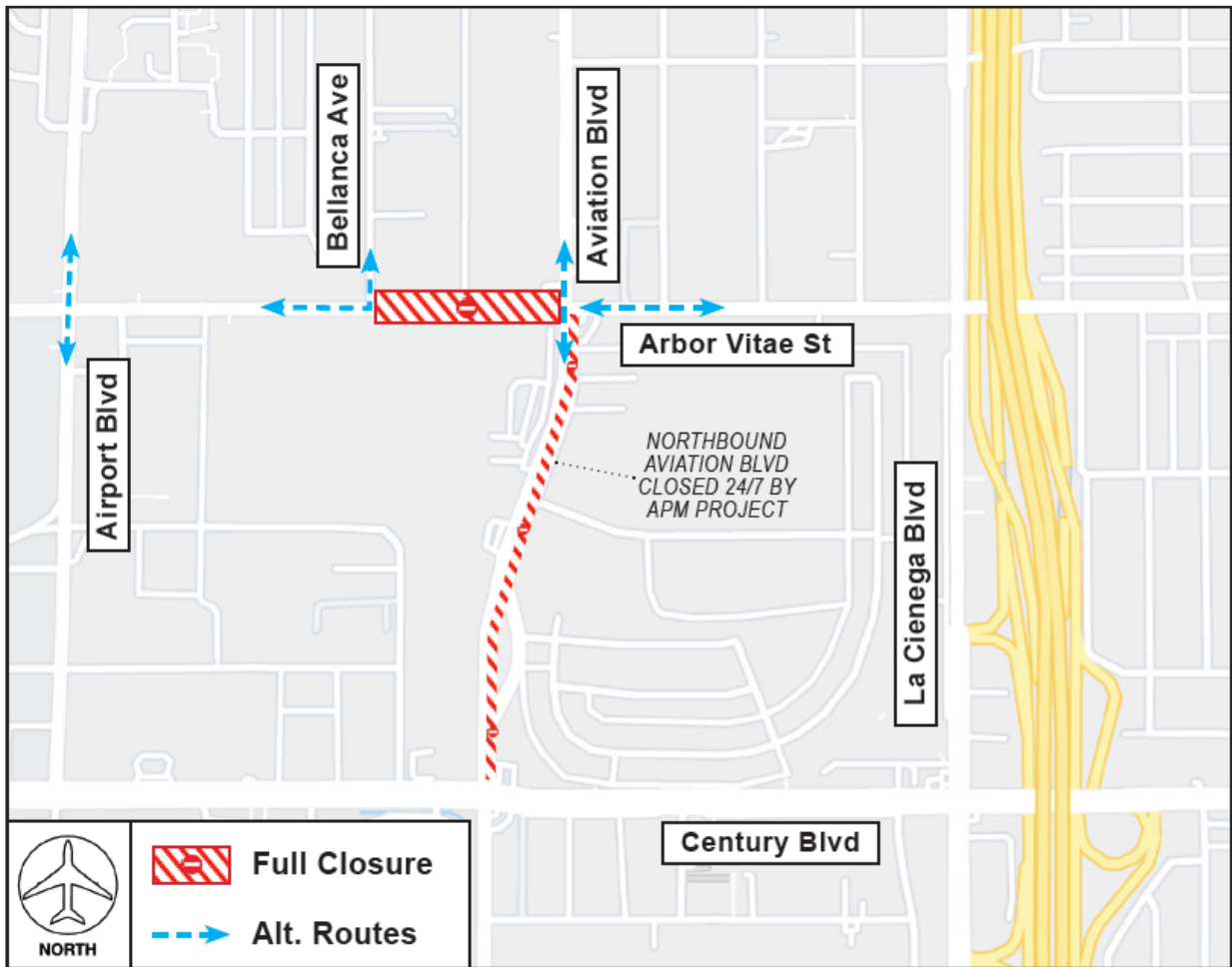
flyLAX.com @flyLAXairport LAInternationalAirport

CONSTRUCTION HOT TOPICS

#2

NEW DATES: ARBOR VITAE ST SCHEDULED CLOSURE

TO FACILITATE ROADWAY WORK FOR THE CONRAC FACILITY, A CONTINUOUS FULL CLOSURE OF ARBOR VITAE ST BETWEEN BELLANCA AVE AND AVIATION BLVD IS SCHEDULED TO START SATURDAY, OCTOBER 28 AT 8PM; THE 24/7 CLOSURE IS SCHEDULED TO BE IN PLACE THROUGH MID-DECEMBER 2023.



PLEASE NOTE:

NB Aviation Blvd between Century Blvd and Arbor Vitae St is closed 24/7 by the APM project; SB Aviation Blvd traffic is maintained at all times.

LAX

☎️ LAX Construction Hotline: 310-649-5292 ✉️ LAXConstructionHotline@LAWA.org

flyLAX.com 🐦 @flyLAXairport 🌐 LAInternationalAirport

CONSTRUCTION HOT TOPICS

#3 SCHEDULED 24/7 CTA LANE RESTRICTIONS

THE MAP BELOW IS A COLLECTIVE
SNAPSHOT OF ALL SCHEDULED 24/7 LANE
RESTRICTIONS FOR CTA DEPARTURES AND
ARRIVALS LEVEL ROADWAYS FOR THE
MONTH OF OCTOBER 2023

PLEASE NOTE:

This map only reflects
24/7 continuous lane
closures in the CTA;
other nightly lane
closures / sidewalk
restrictions may be
in place to facilitate
construction activities

ACCESS MAINTAINED:

Traffic around the
Central Terminal Area
will be maintained at
all times, as well as
access to passenger
pick-up and drop-off

PLAN AHEAD:

Motorists should plan
ahead for potential
delays

