



Statistical Update on LAX Aircraft Operations

July 8, 2015

LAX/Community Noise Roundtable

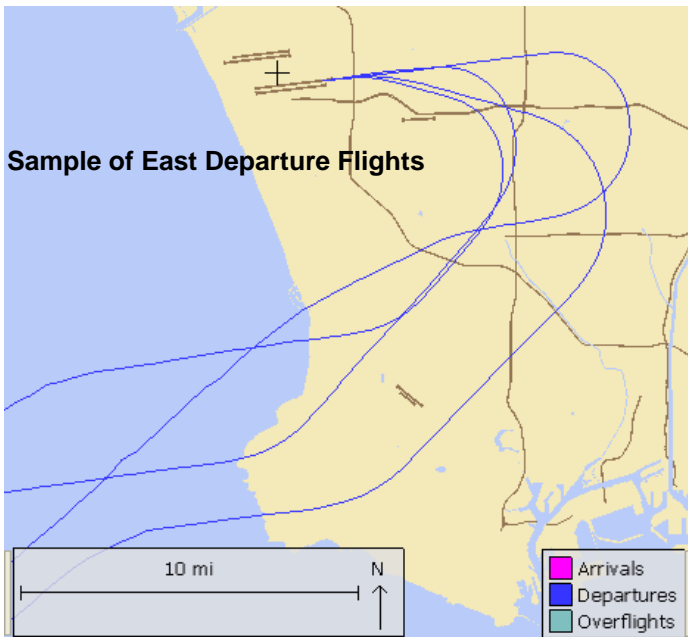
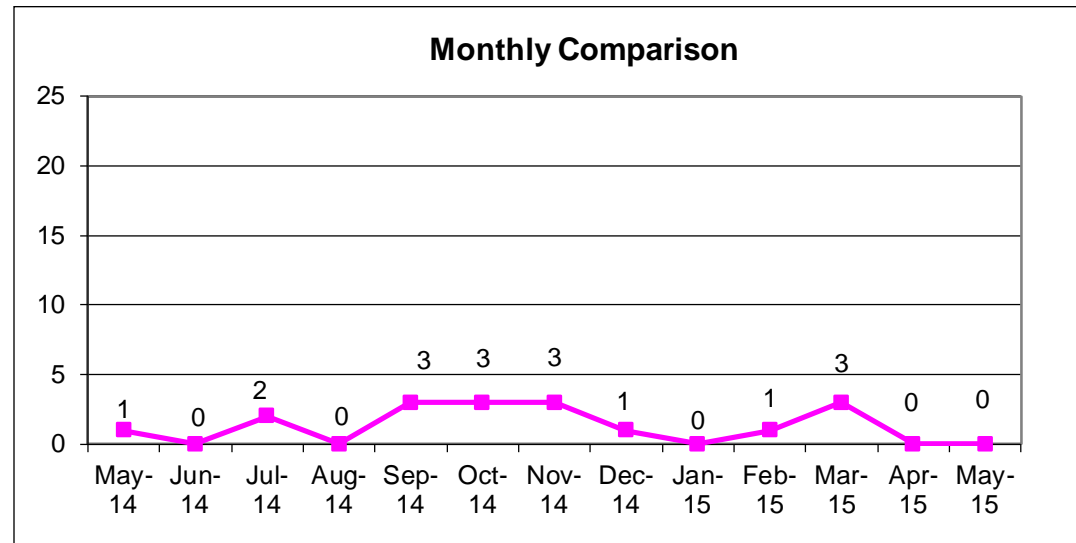
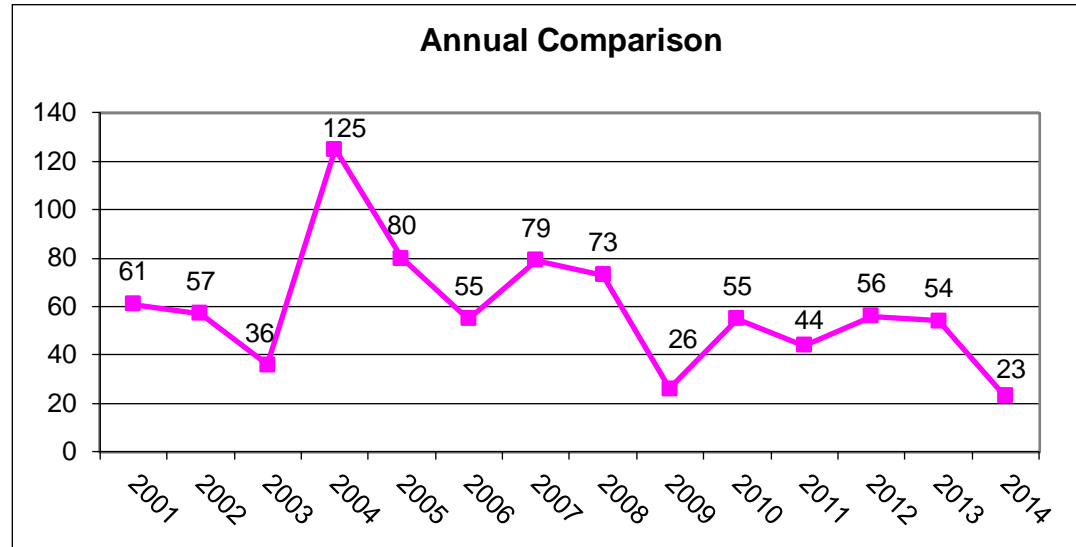
Overview

Statistical information on the following operations:

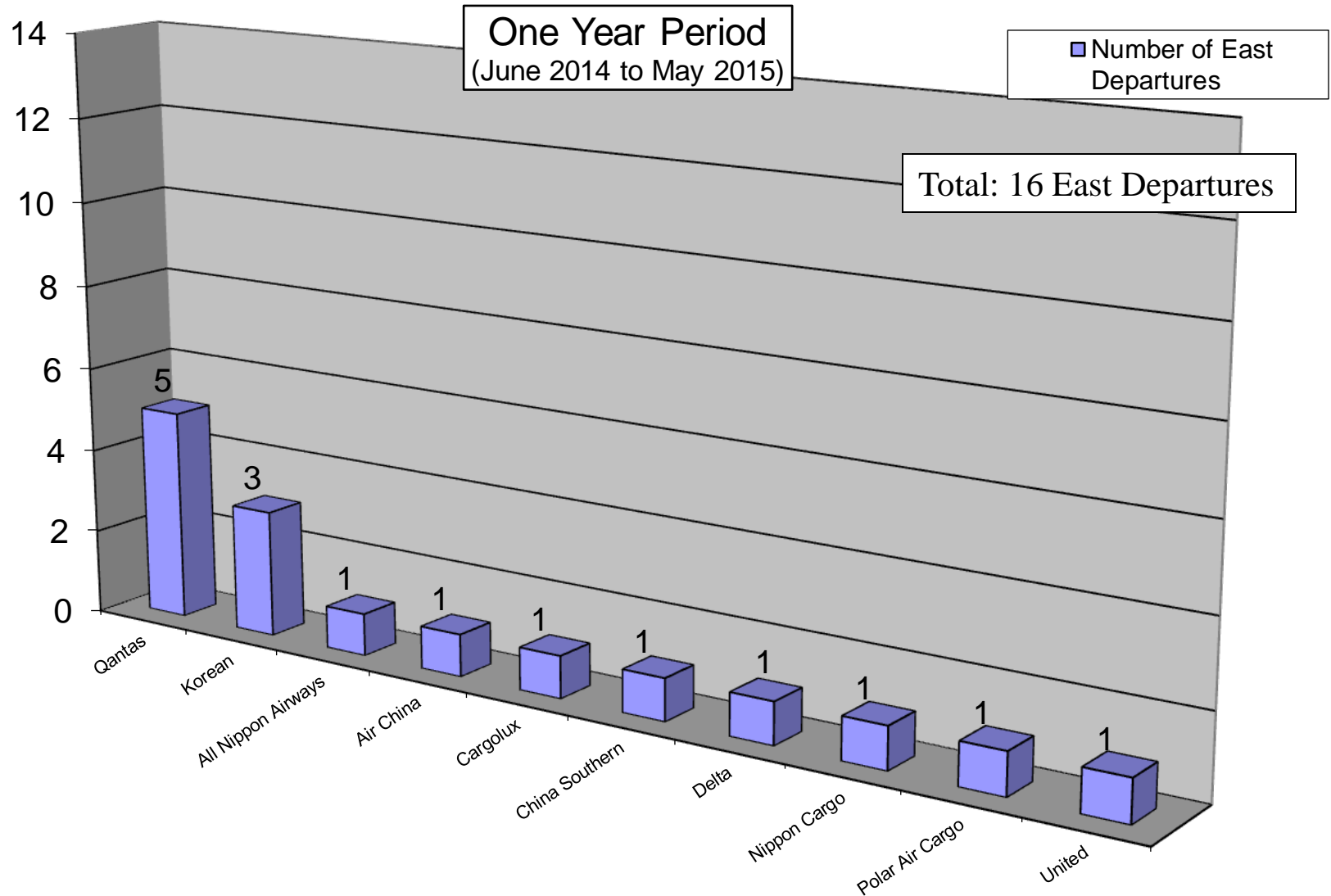
- East Departures
- Early Turns
- Go-arounds

Non-Conforming East Departures Midnight to 6:30 AM

This report shows a summary of aircraft operations departing to the east while the airport is still conducting westerly departures between midnight and 6:30 a.m. These individual easterly departures usually occur when the pilot of a heavy aircraft (e.g. B747s) determines that the tail wind is too great for the weight of the aircraft and requests to depart east into the wind for aircraft safety.

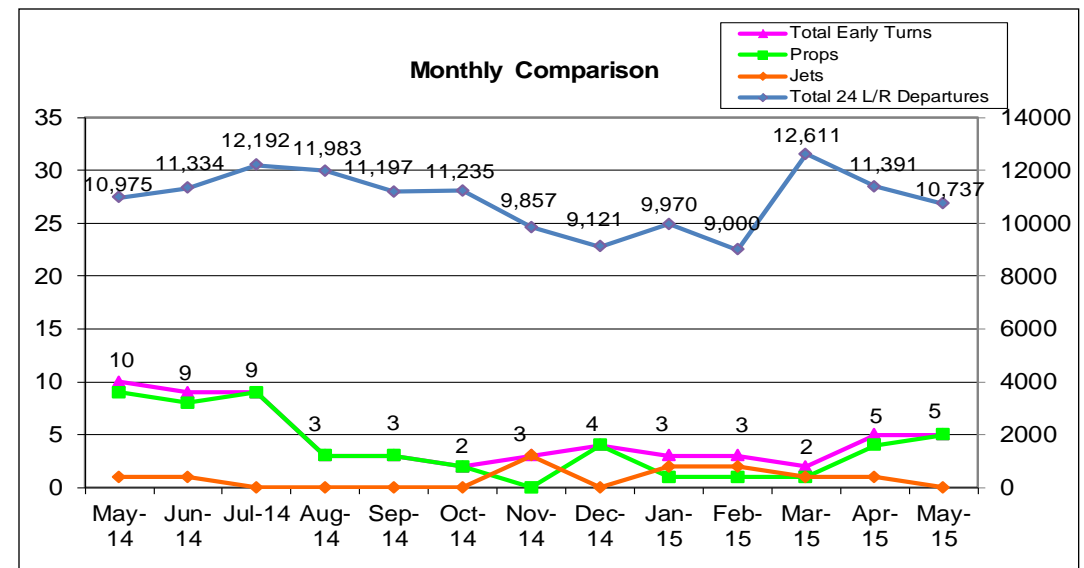
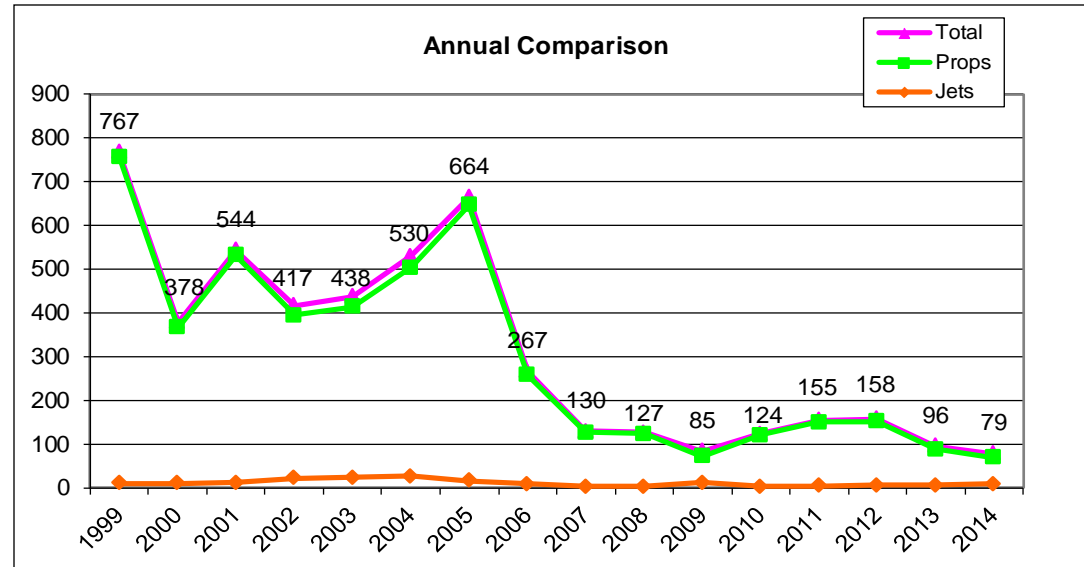
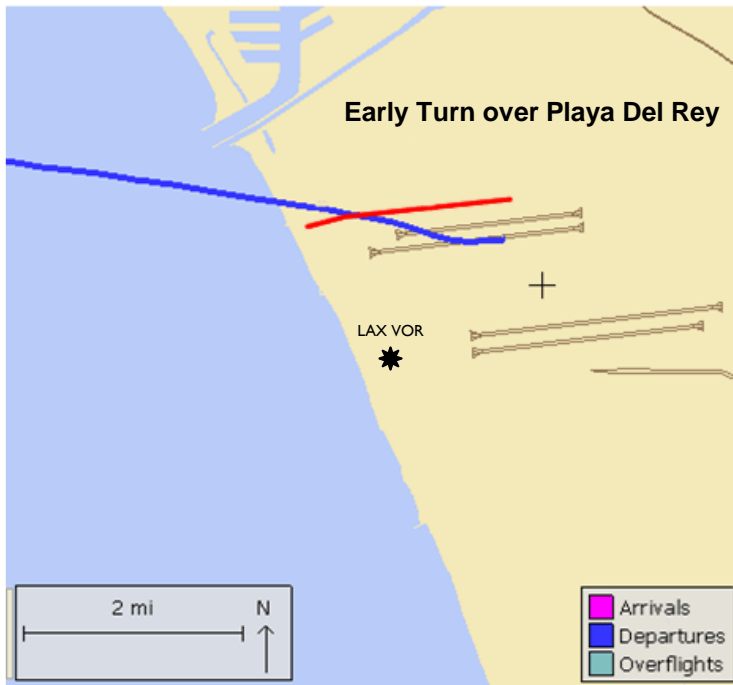


Non-Conforming East Departures by Operator Midnight to 6:30 AM



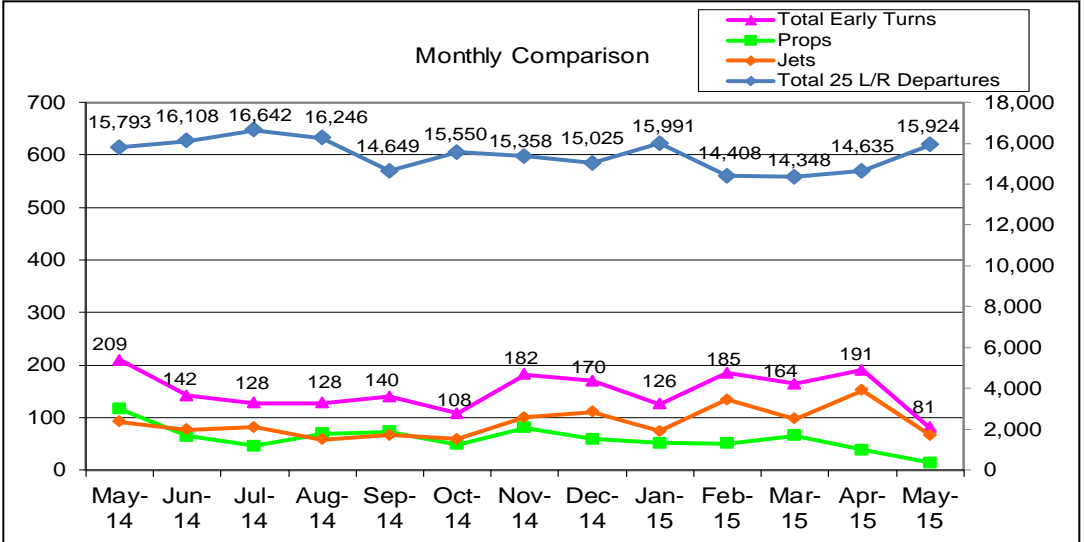
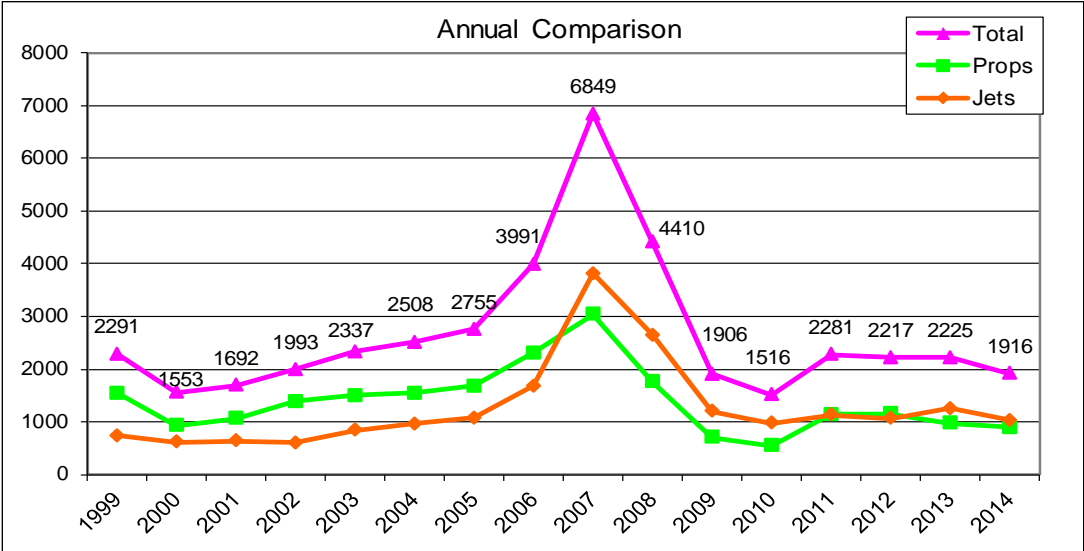
Early Turns to the North

Aircraft departing to the ocean turn early prior to reaching the shoreline

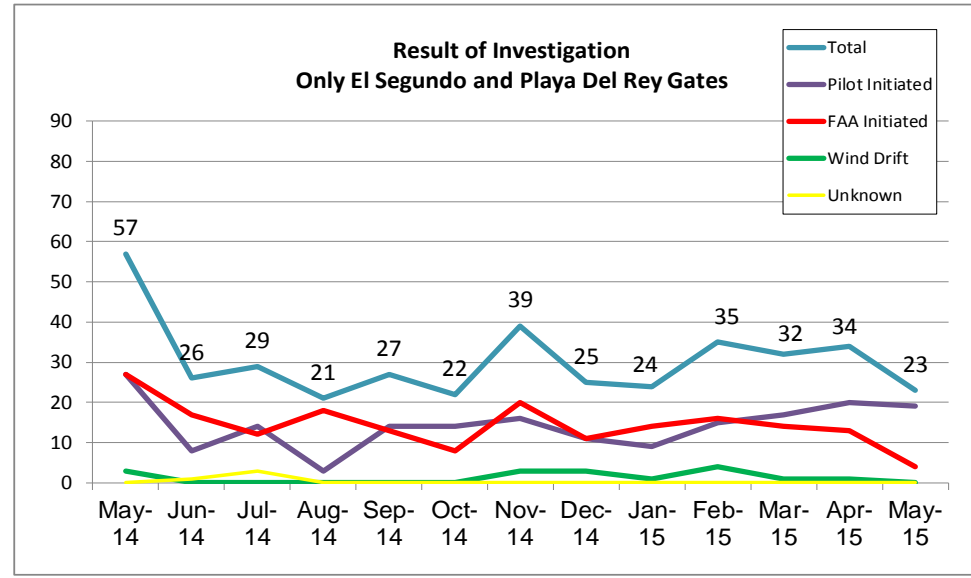
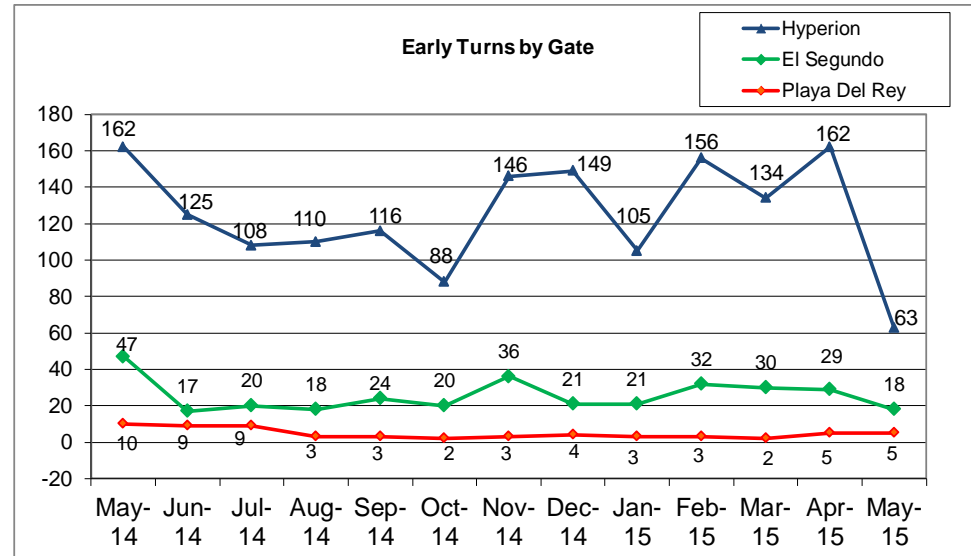
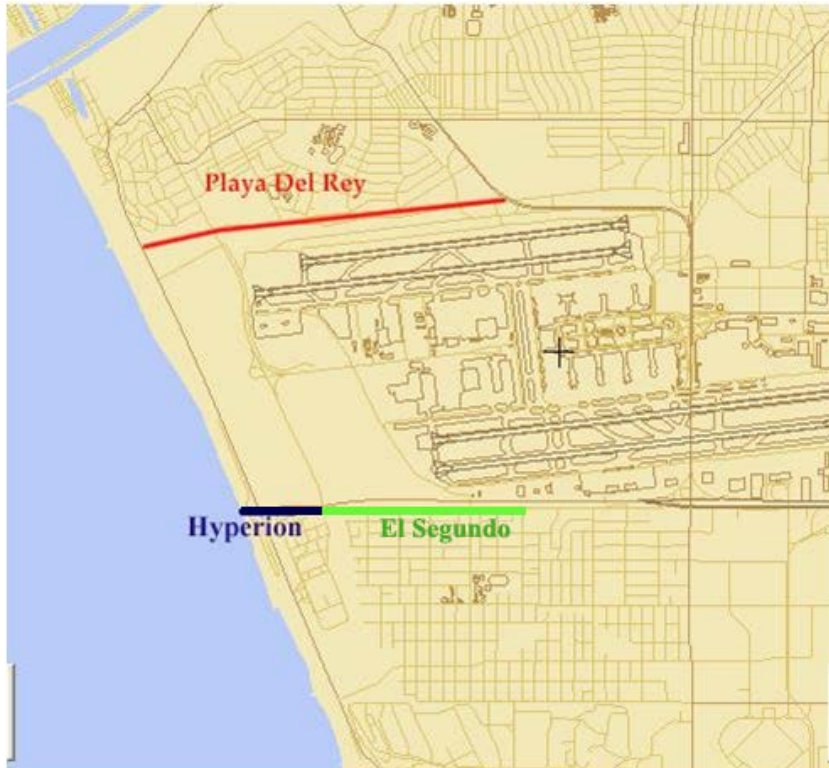


Early Turns to the South

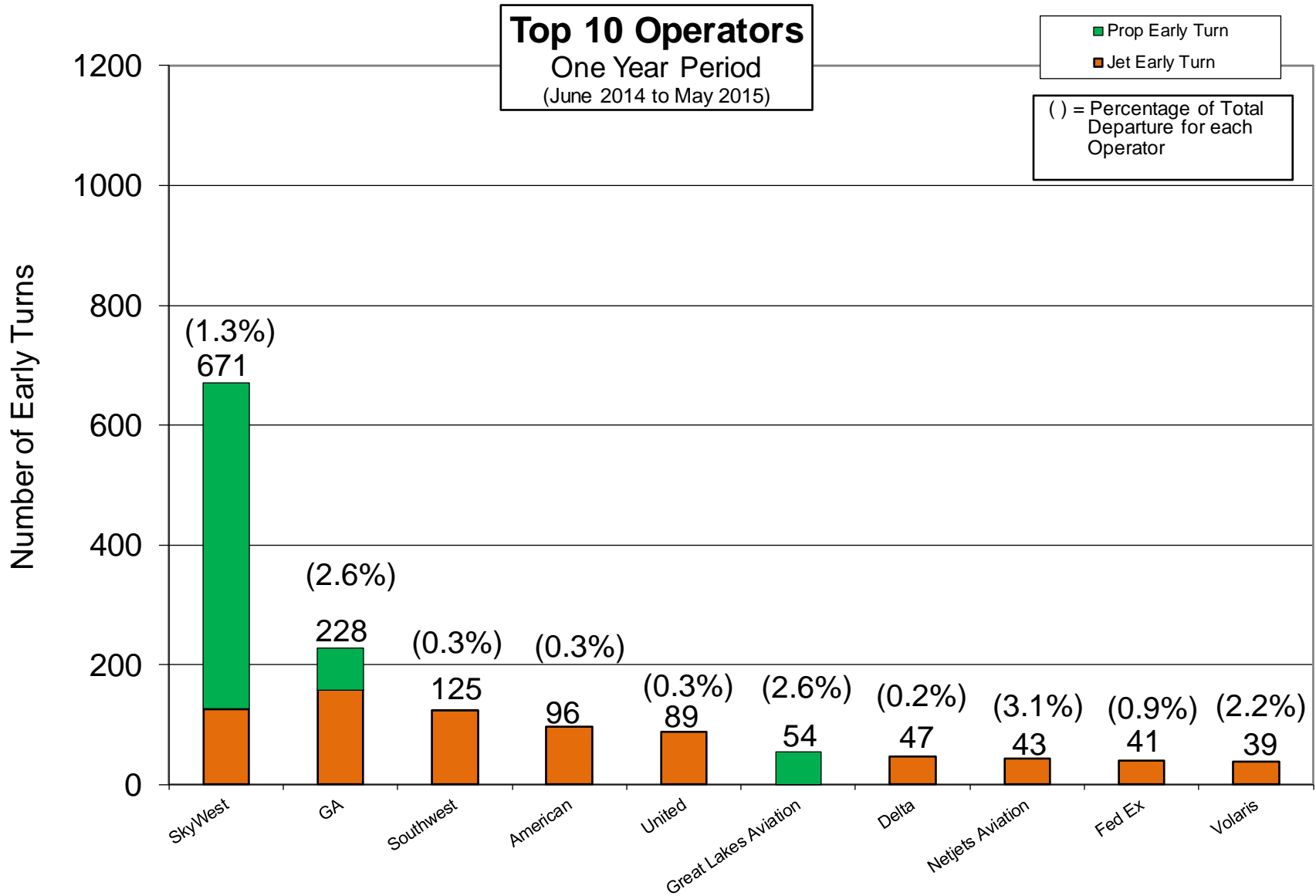
Aircraft departing to the ocean turn early prior to reaching the shoreline



Early Turn Breakdown

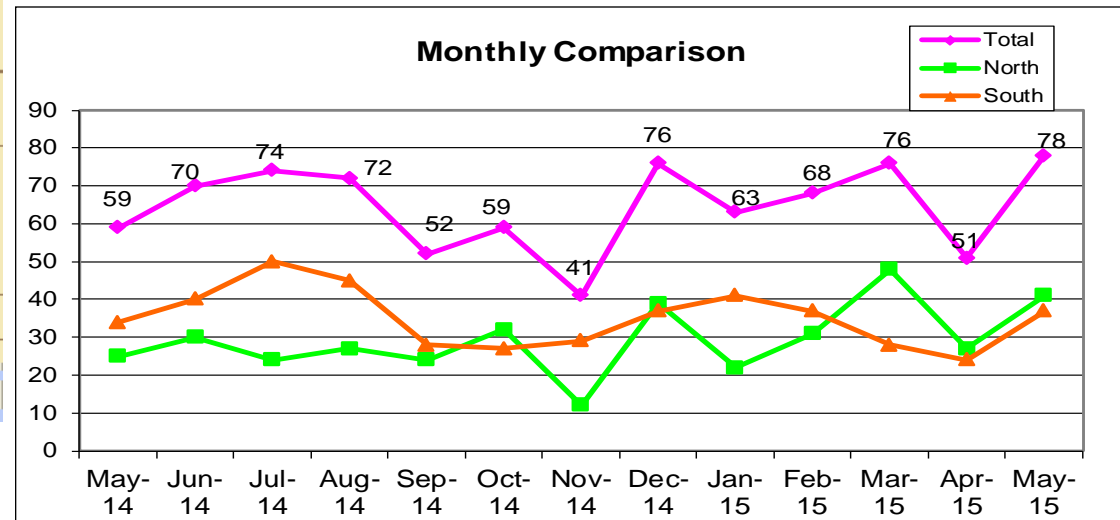
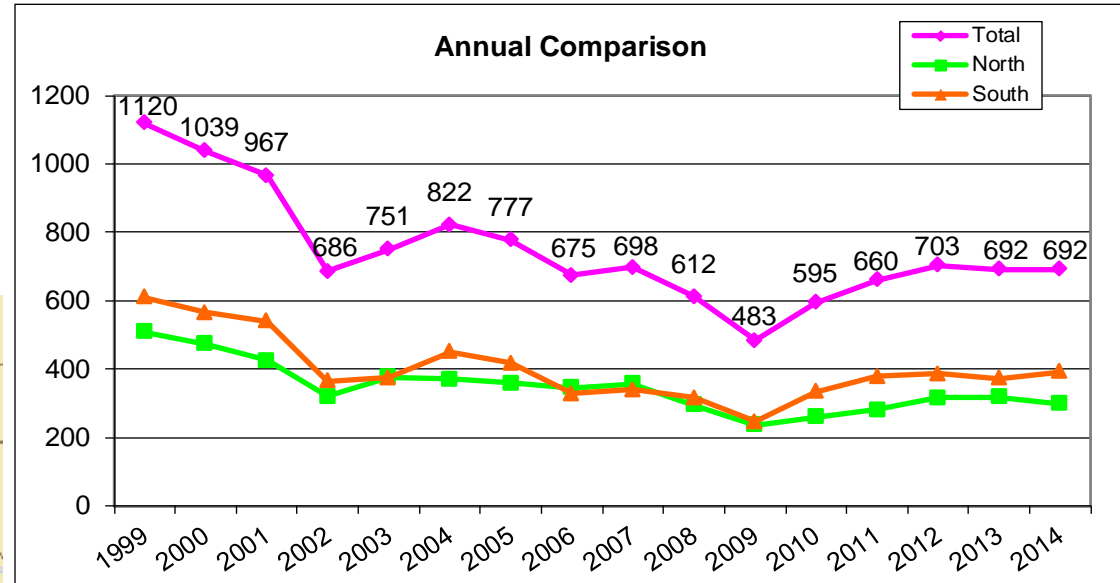
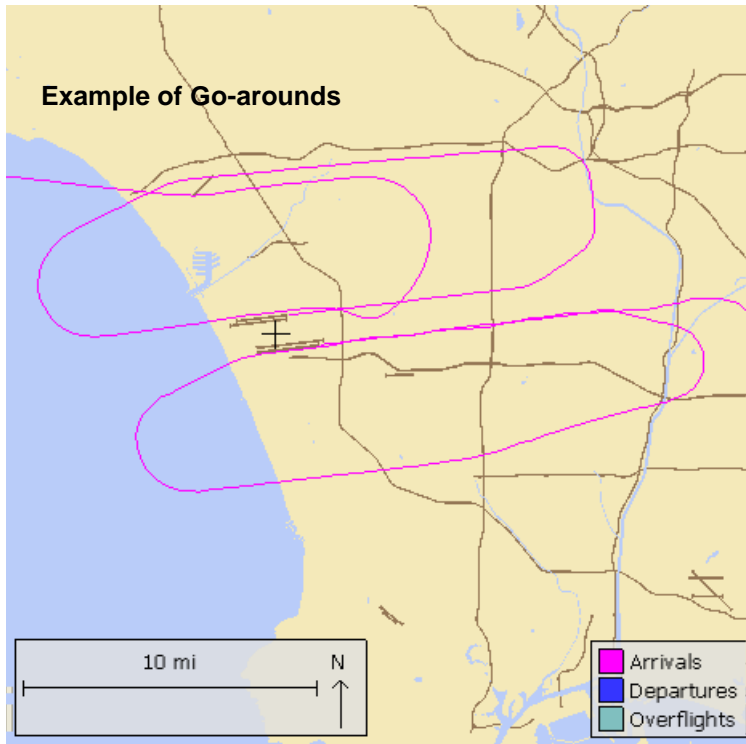


Early Turns by Operator



Go-Arounds

Monitoring pilot or ATC initiated go-arounds or missed approaches

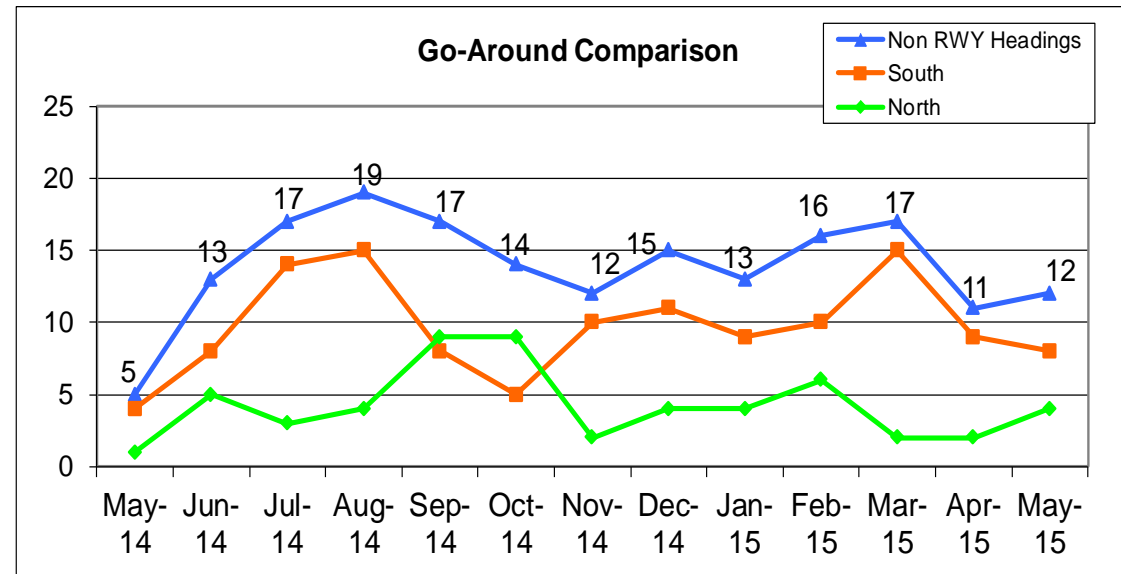
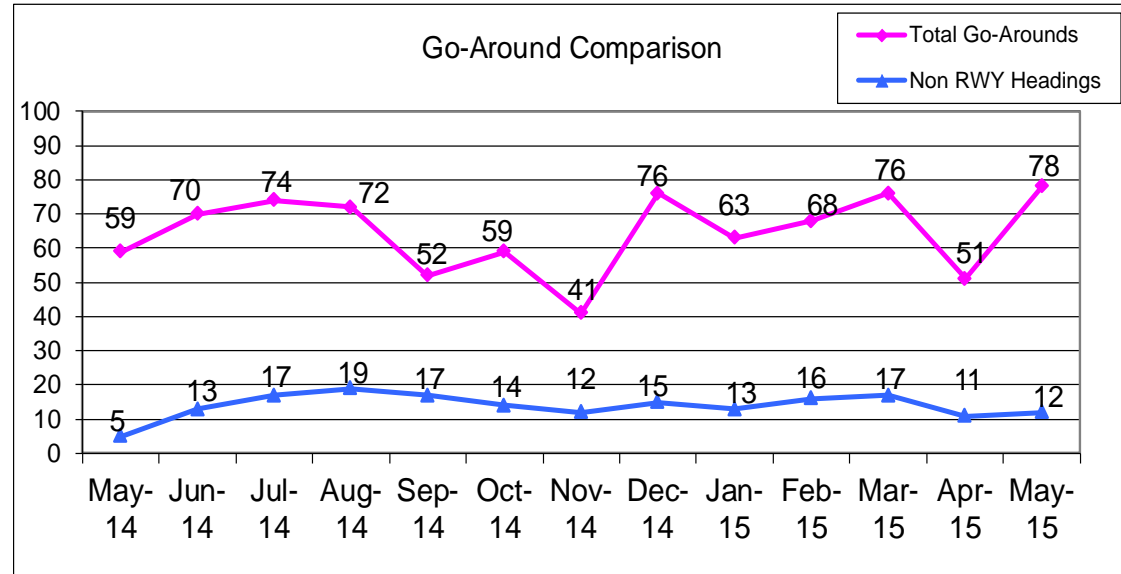
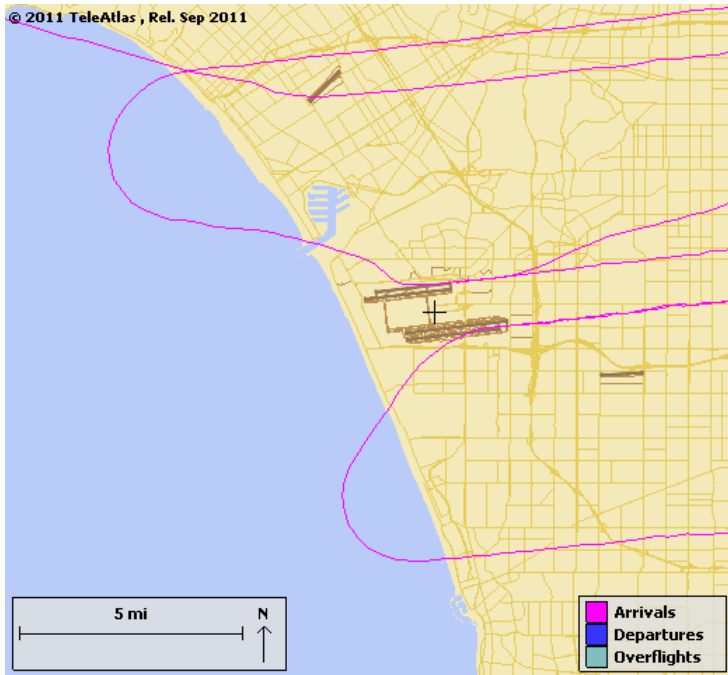


Reasons for Go-Arounds

		November 2014	May 2015
Pilot Initiated		22	35
	Too high or too fast	8	19
	Weather	6	9
	Aircraft Equipment (flaps, gears, avionics)	2	4
	Ground Equipment (Nav aids, lighting, etc)	1	0
	Other	3	0
	Overtake on Final/ Wake Turbulence	0	1
	Unknown	2	2
Controller Initiated		18	38
	In-trail Spacing	5	25
	Previous Arrival Traffic on Runway	9	8
	Runway Crossing Traffic	2	2
	Departure Traffic on Runway	2	3
Unknown		1	5
Total		41	78

Go-Arounds – Not Maintaining RWY Headings

Example of Go-Arounds not maintaining runway headings



Go-Arounds – By Operator

