

# Runway 25L Closure Analysis

Los Angeles World Airports  
Noise Management Division

We fly as **ONE**

# Background

- **Runway 25L closed on 7/29/06**
- **“Pre-Closure” Data:**
  - March through July 2006
- **“Post-Closure” Data:**
  - August through November 2006
- **Similar number of operations before and after runway closure**

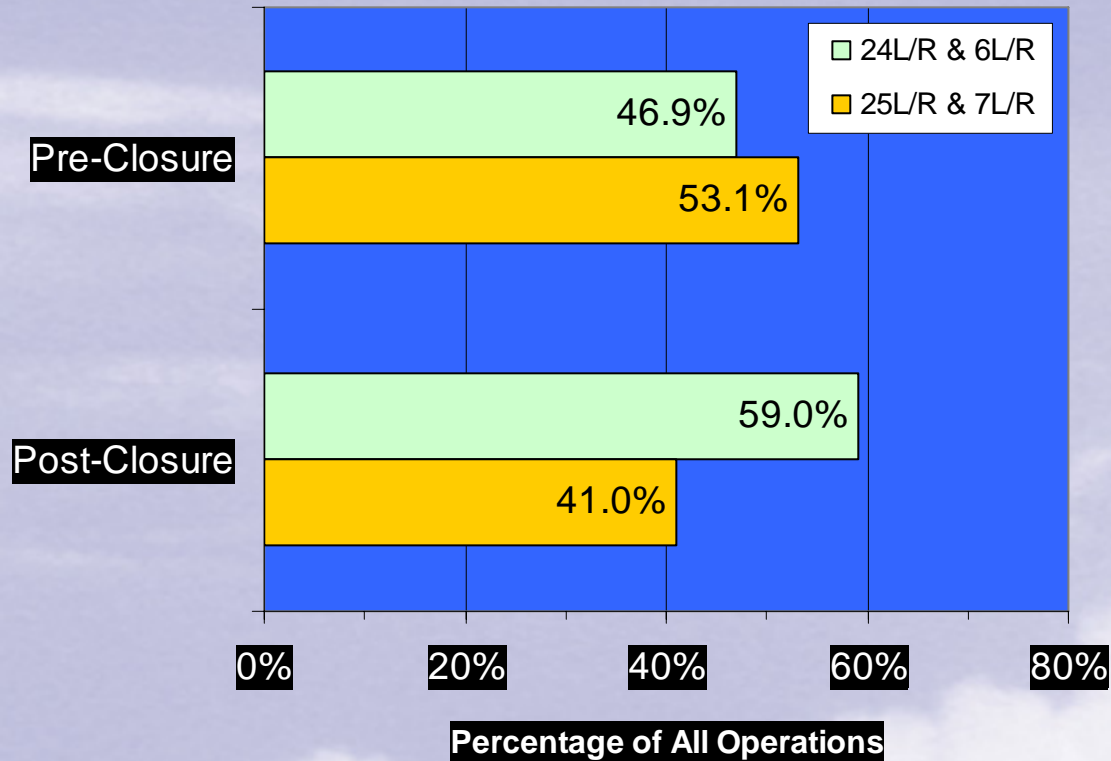
# Introduction

- Runway Utilization Analysis
- Operations Analysis
- Noise Analysis
- Complaints Analysis

# Runway Utilization Analysis

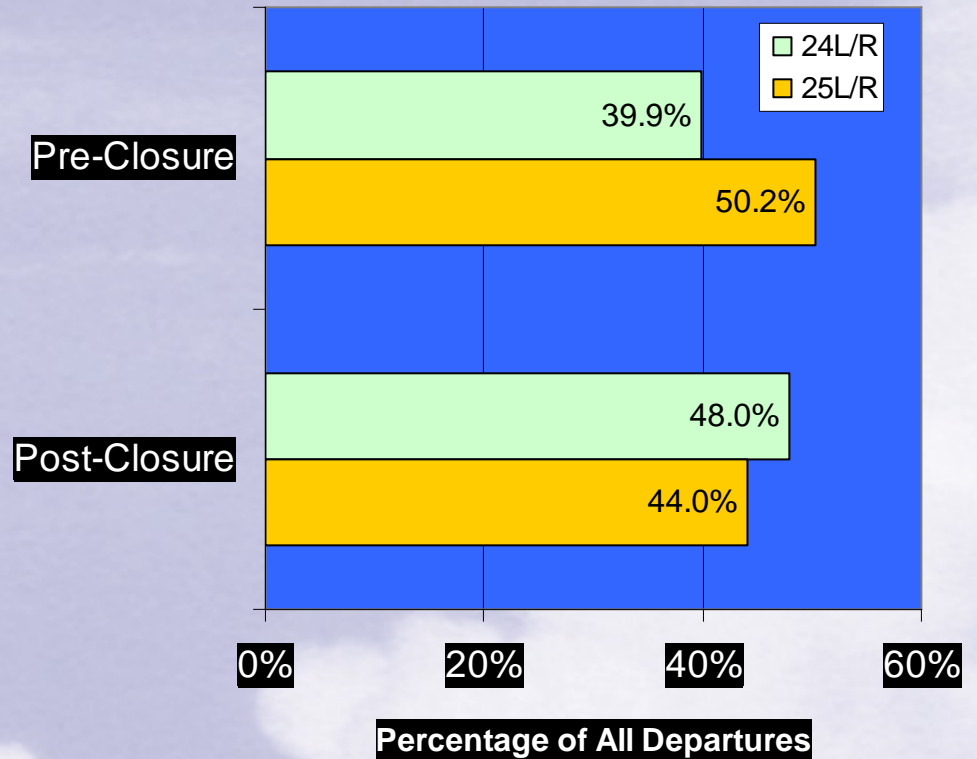
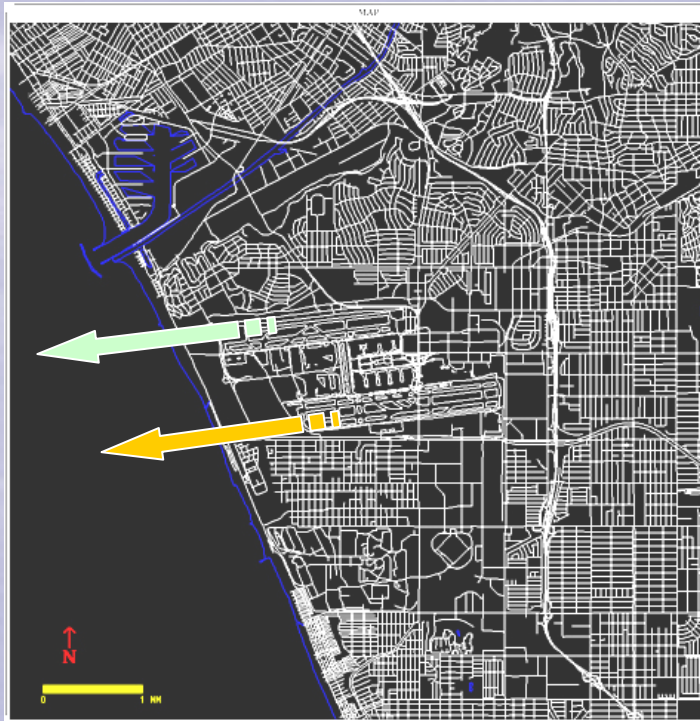
- Total operations
- Westerly operations
- Preferential runway usage of 24L/R
- Widebody aircraft operations

## Total Operations by Runway Complex

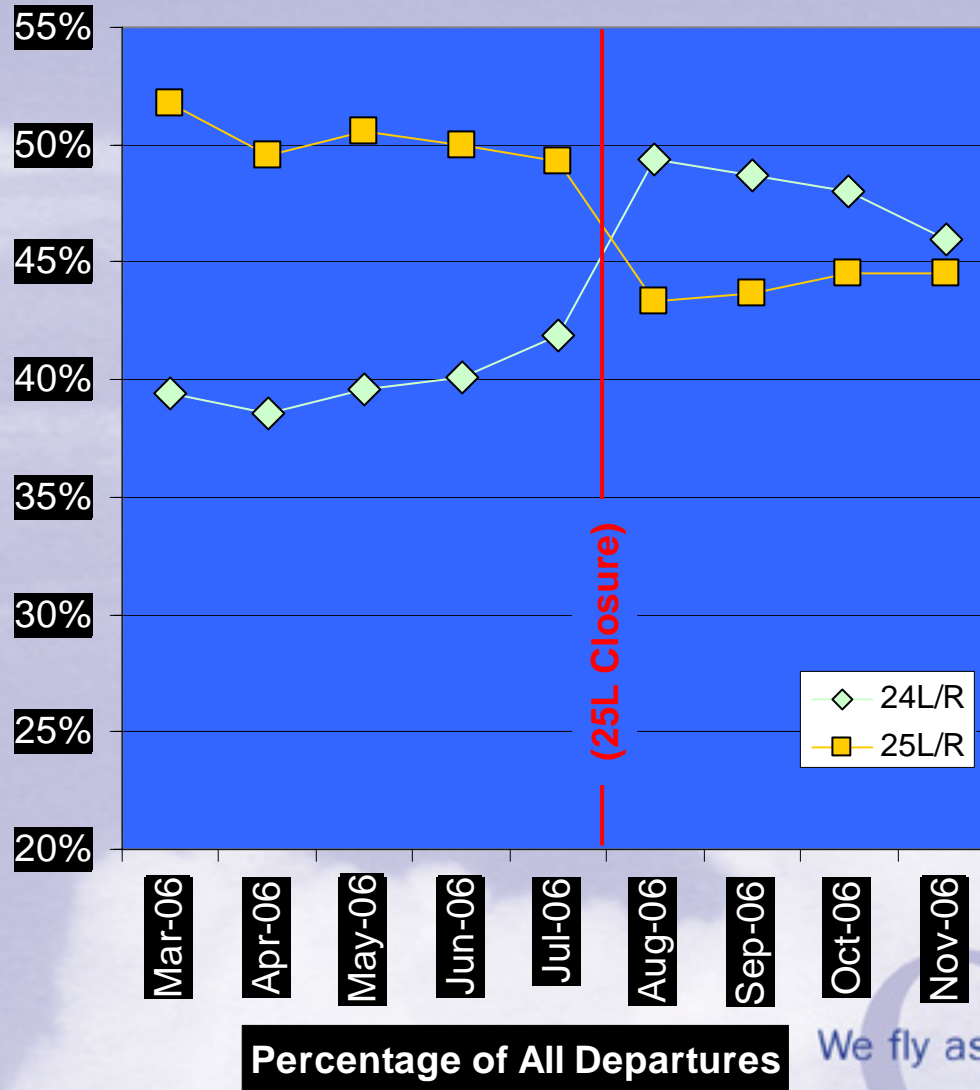




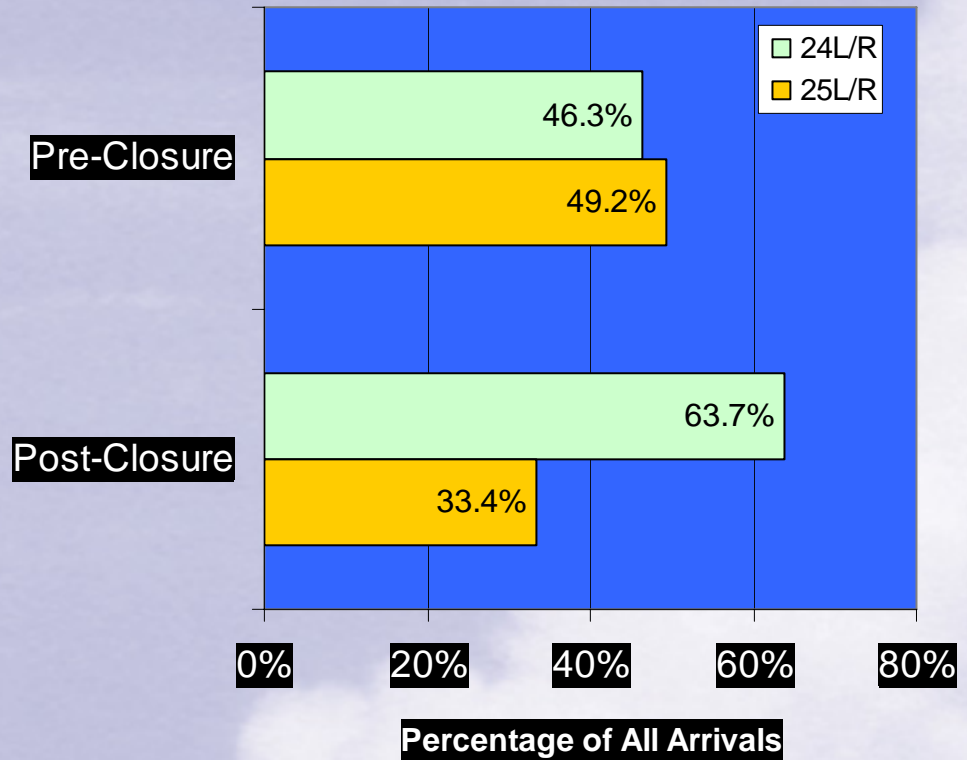
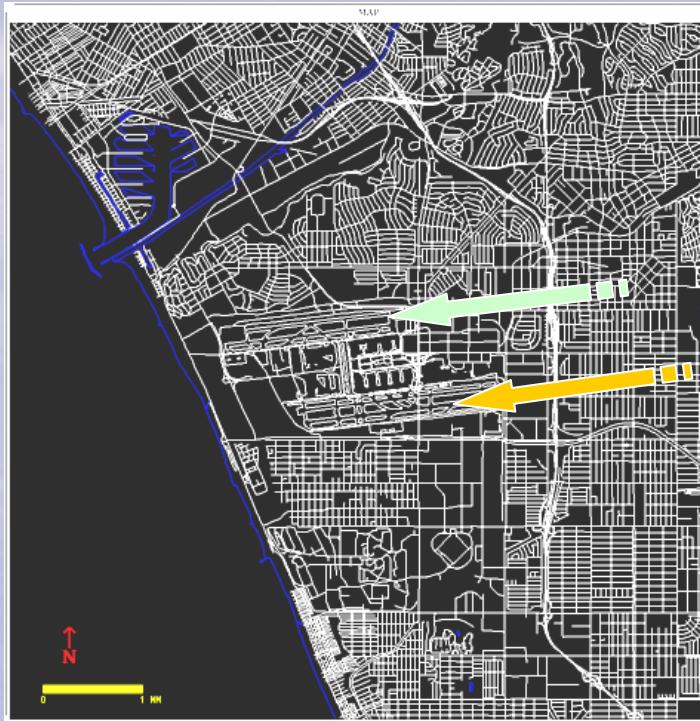
## Westerly Departures – 24L/R & 25L/R



## Westerly Departures – 24L/R & 25L/R

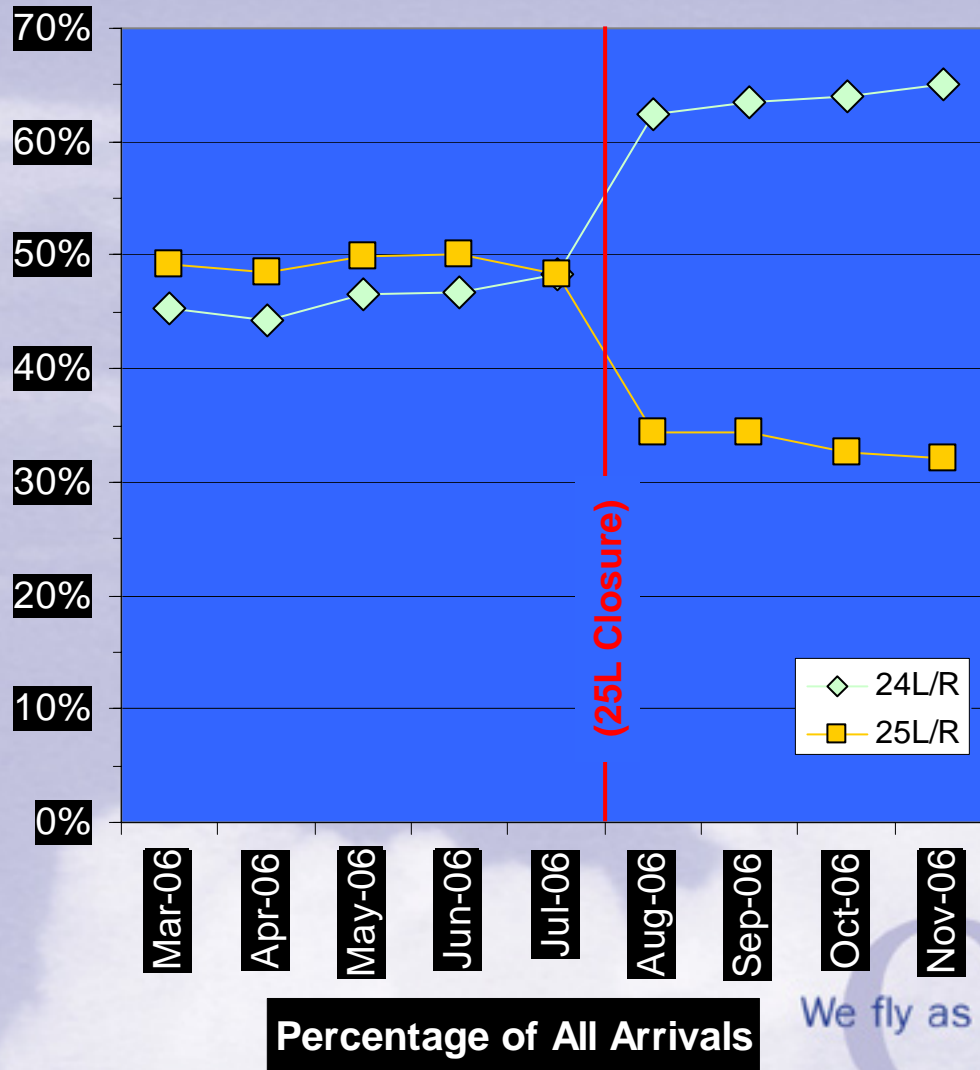


## Westerly Arrivals – 24L/R & 25L/R

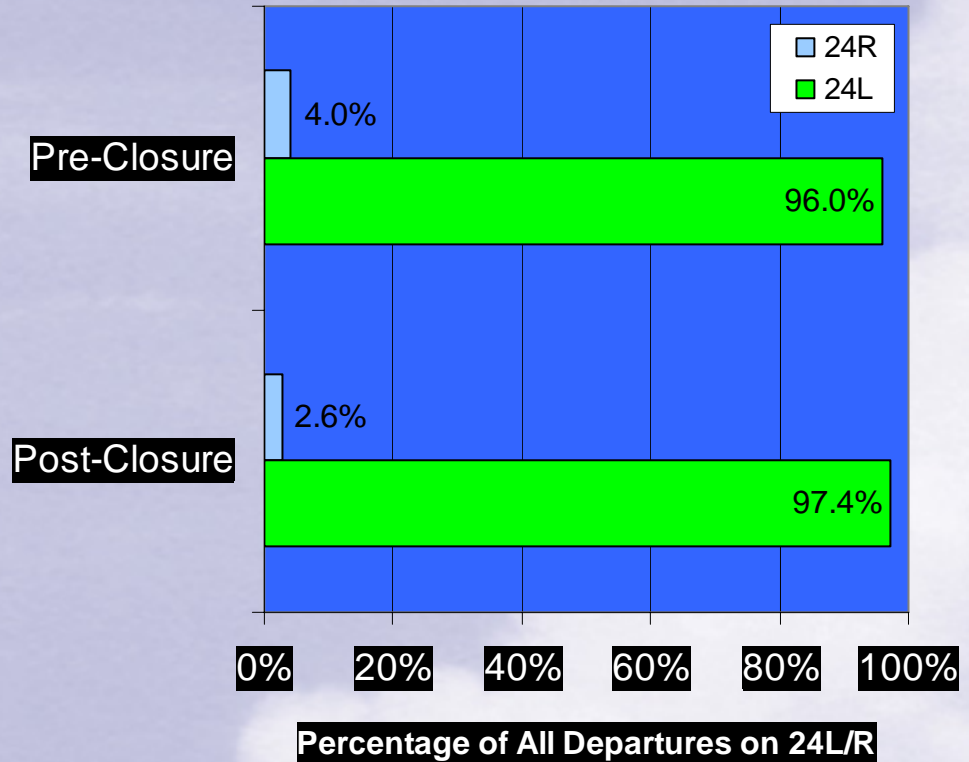




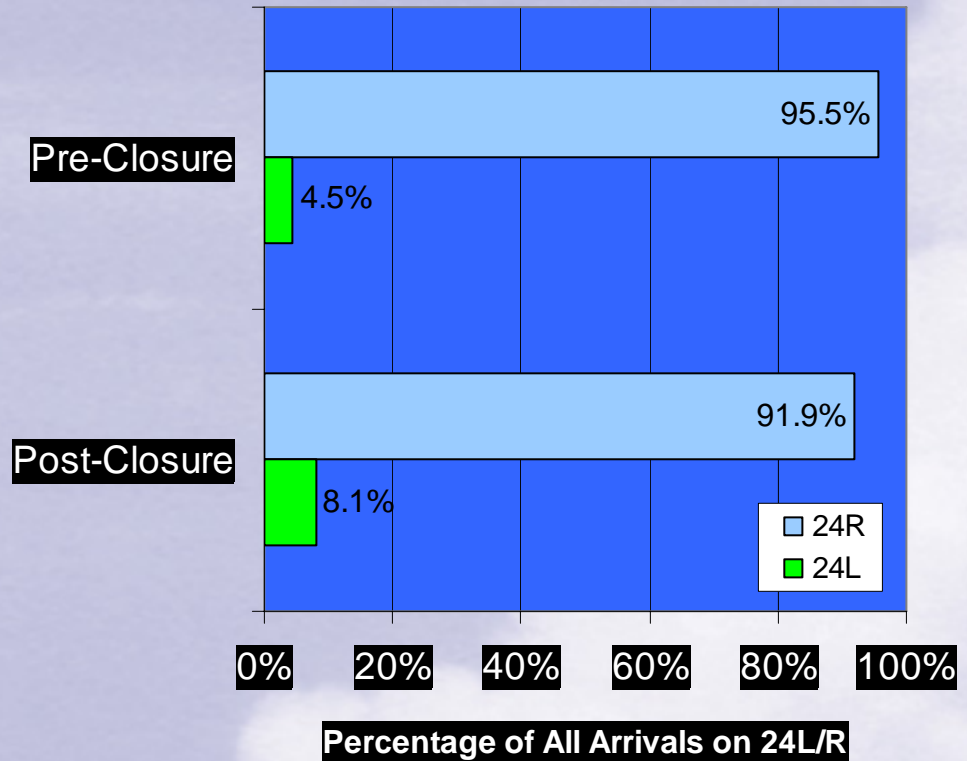
## Westerly Arrivals 24L/R & 25L/R



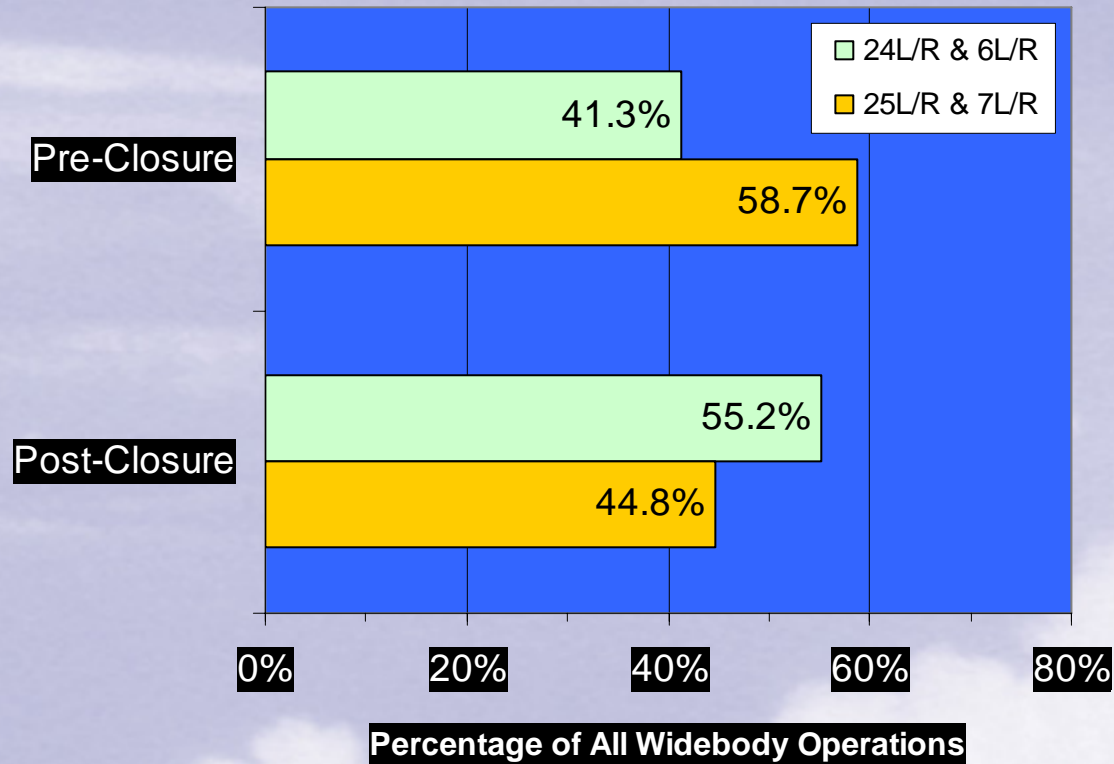
# Preferential Runway Usage – 24 L/R Departures



# Preferential Runway Usage – 24 L/R Arrivals

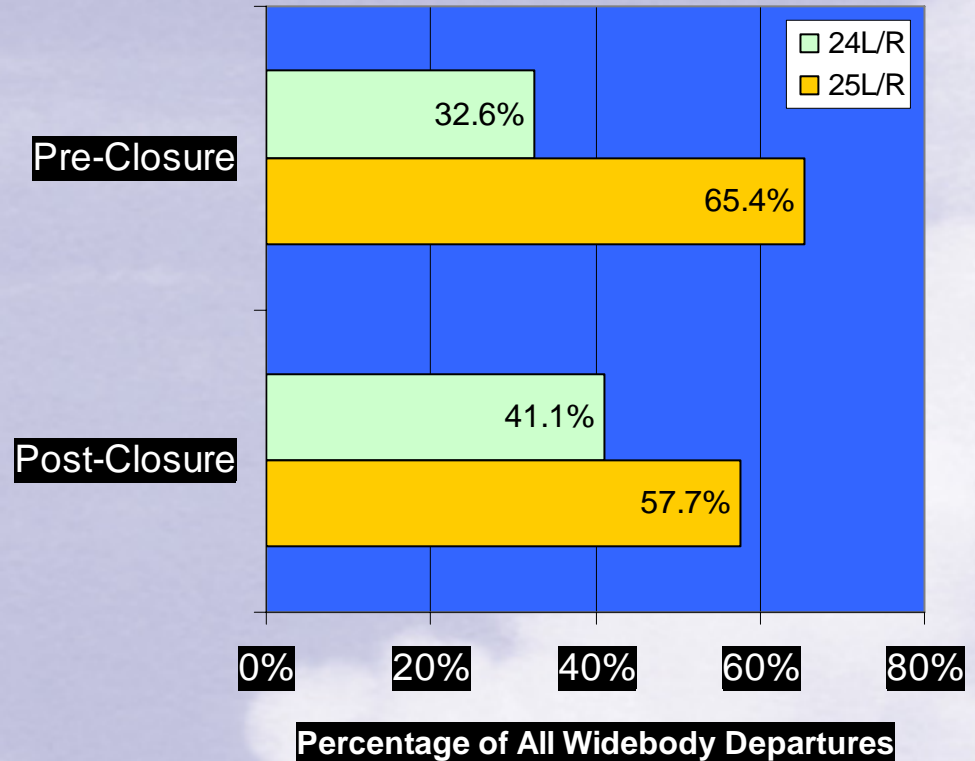
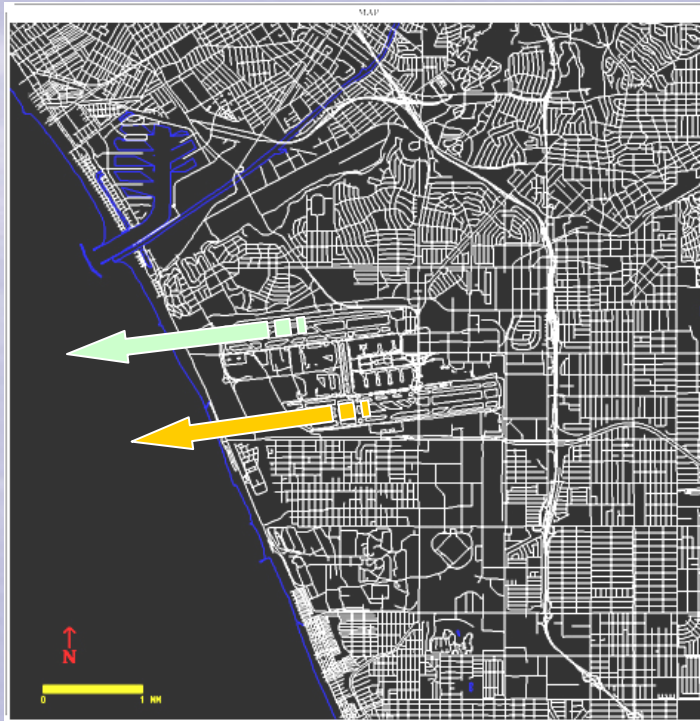


# Widebody AC - Total Operations by Runway Complex

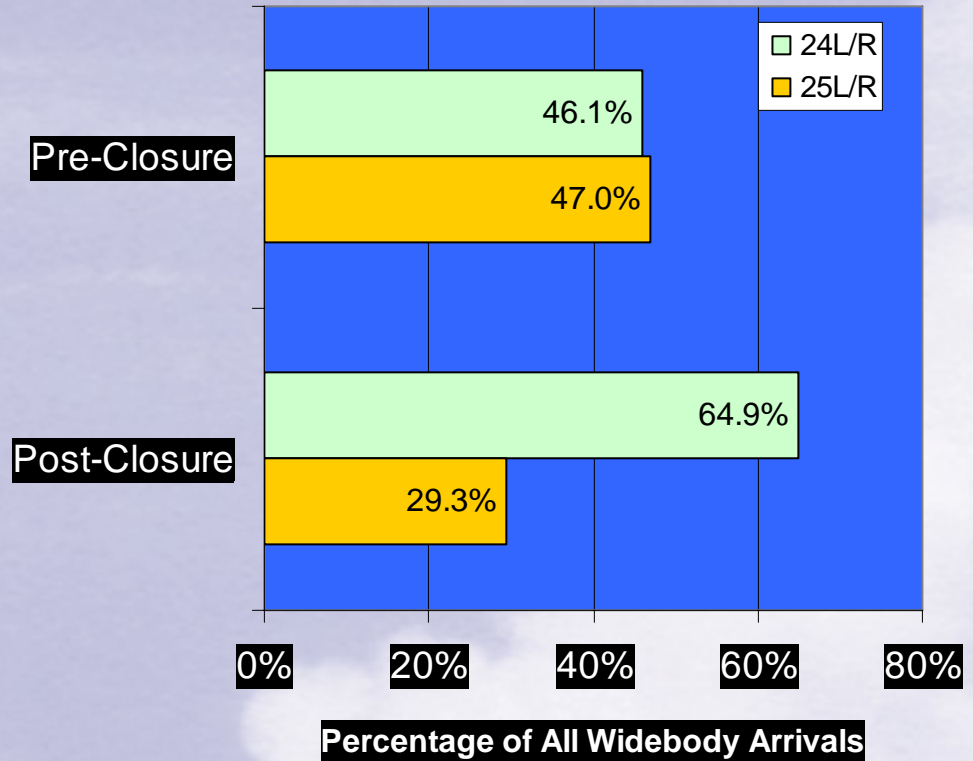
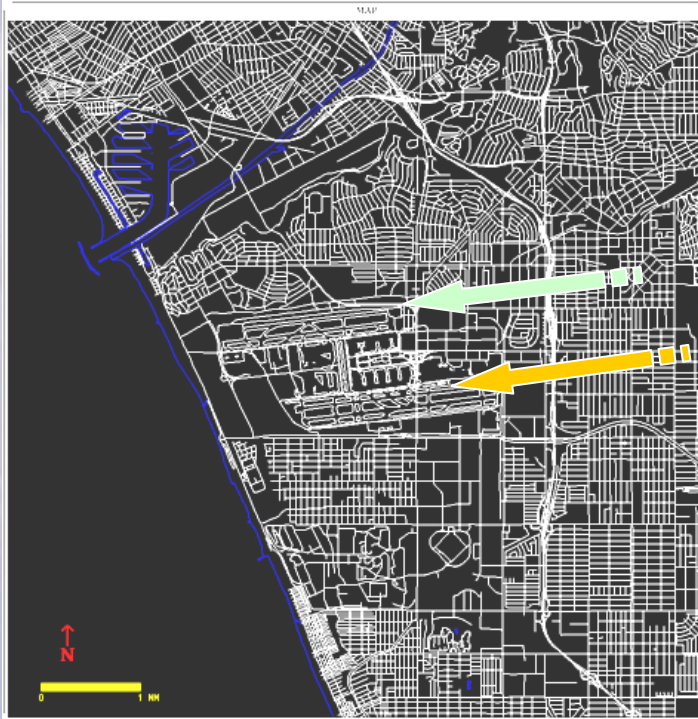




# Westerly Departures by Widebody AC – 24L/R & 25L/R



# Westerly Arrivals by Widebody AC – 24L/R & 25L/R

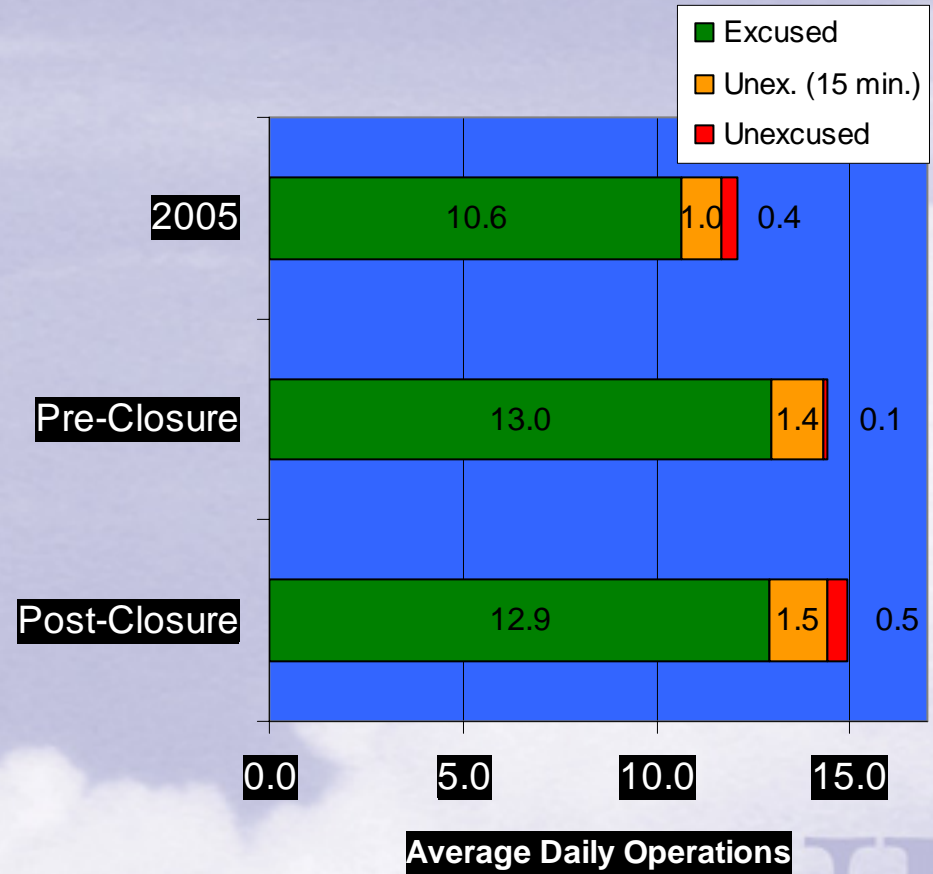
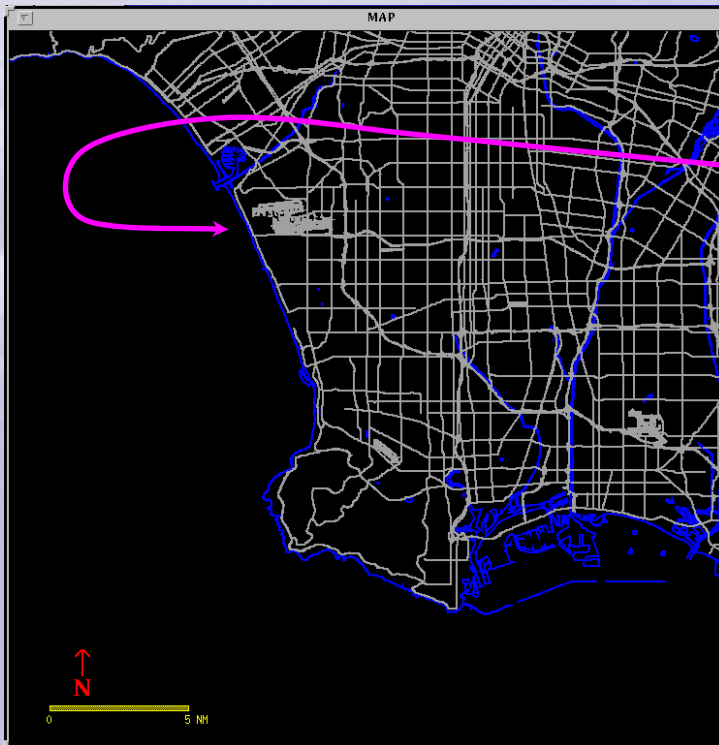


# Operations Analysis

- Over-ocean operations
- Easterly departures between 00:00 - 06:30
- Early turns – South
- Early turns – North
- Short turn arrivals
- Monterey Park overflights
- Go-arounds
- Loop departures
- Palos Verdes overflights

## Over-ocean Arrivals Between 00:00 - 06:30

Over-ocean arrivals between  
00:00-06:30 - deviations for  
weather and maintenance only

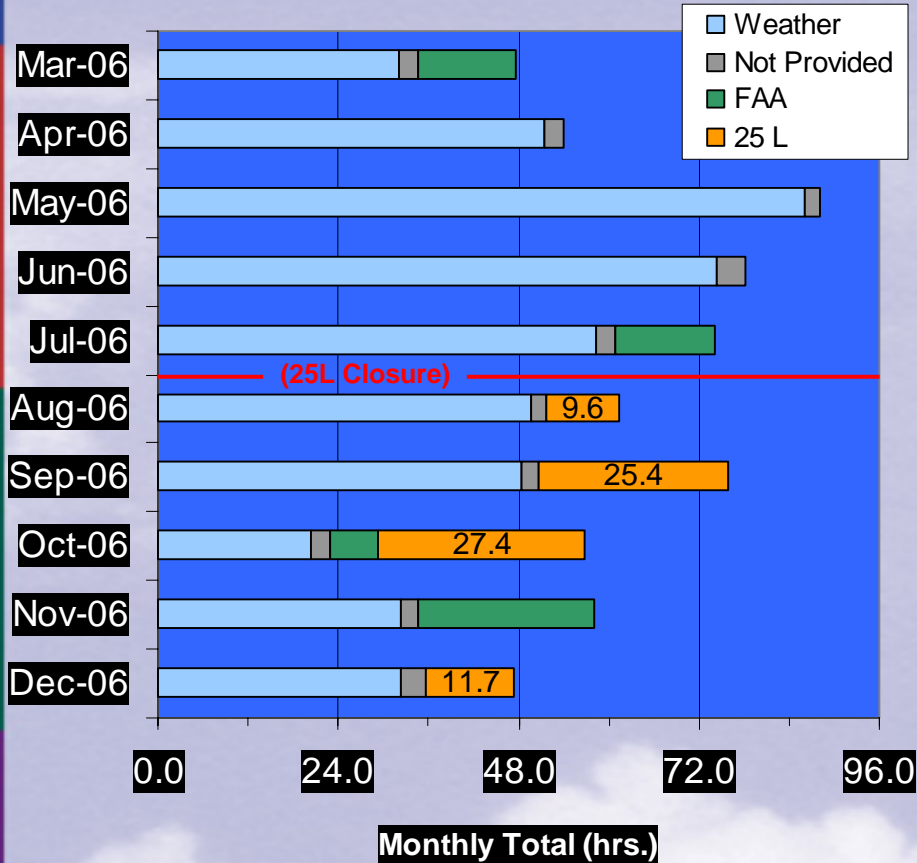


We fly as

ONE



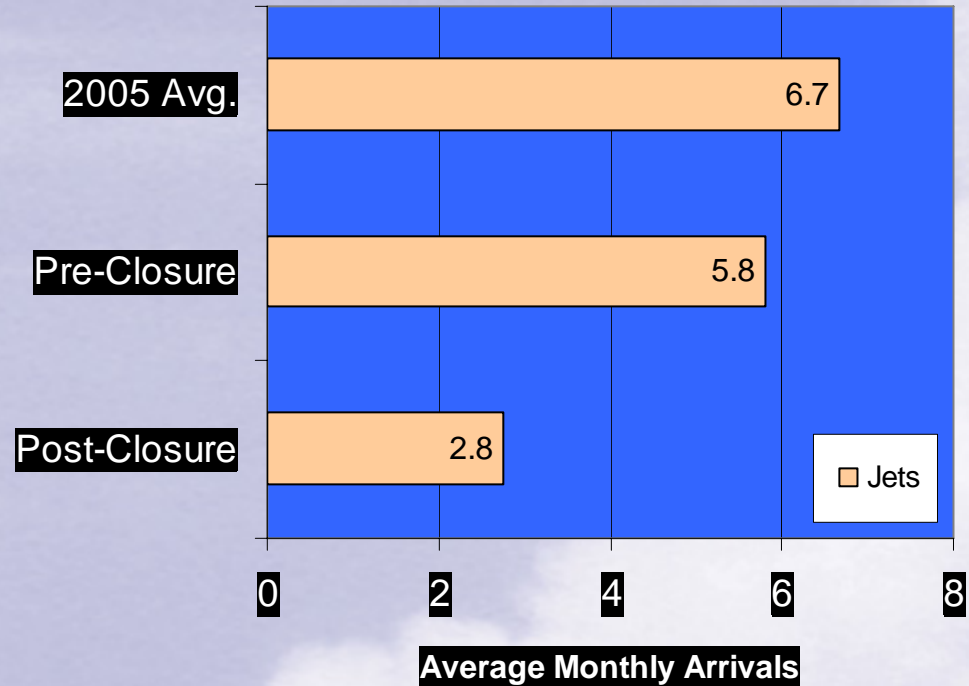
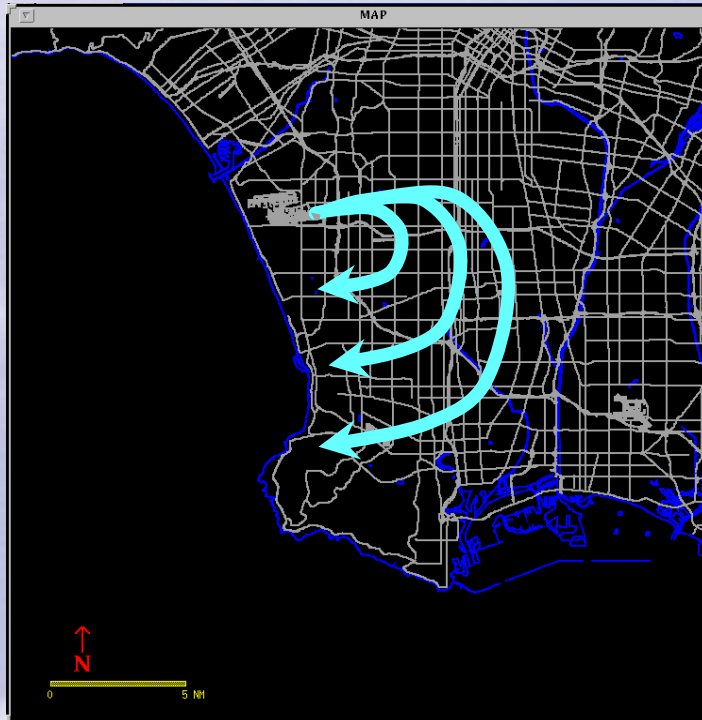
# Summary of Deviations from Over-ocean Operations



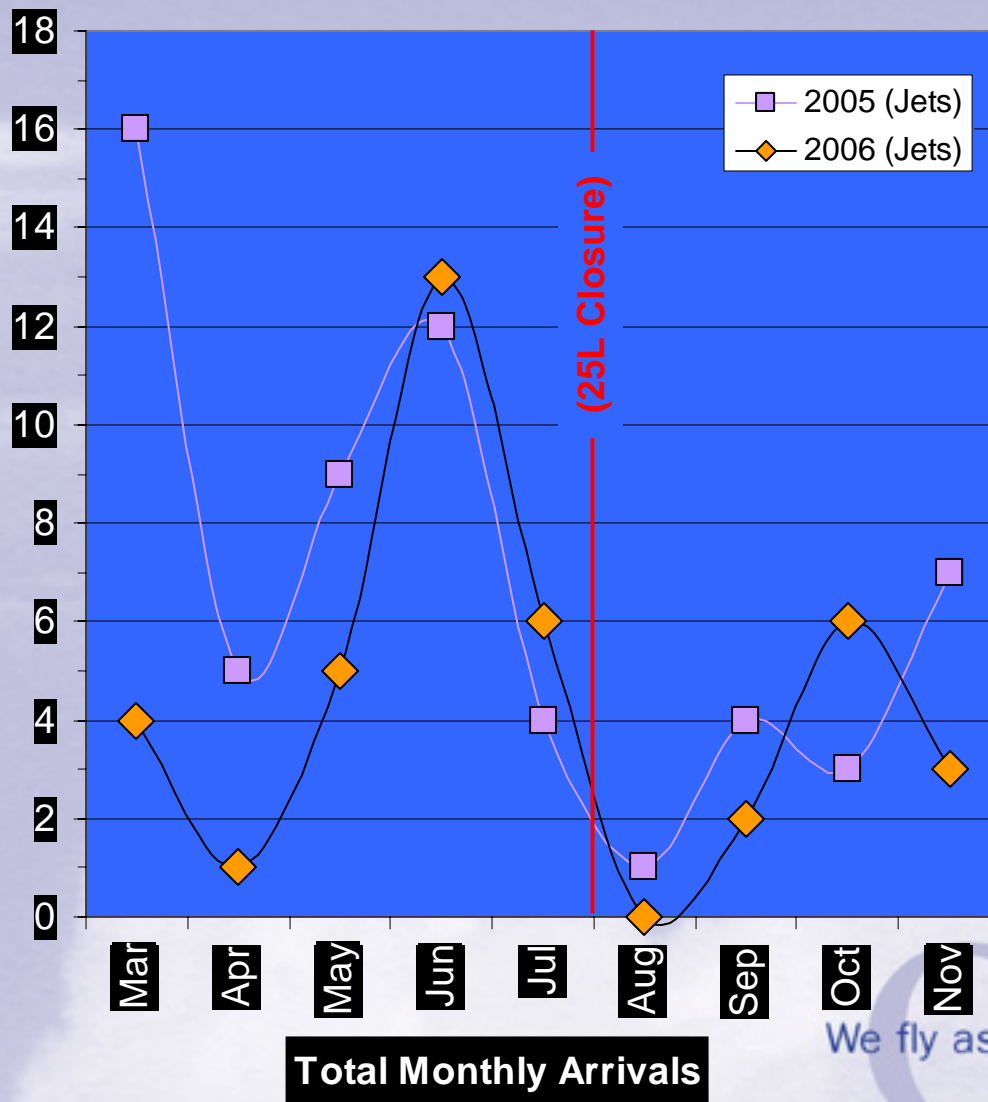
Date	Start Time	End Time	Duration (hrs.)	Reason	Arrivals
08/10/06	2:50	3:47	0.9	South Runways Closed	4
08/21/06	2:00	6:30	4.5	Anticipated runway 25R closure	32
08/22/06	2:24	6:30	4.1	Runway Closure for Contractor Work	30
09/01/06	0:00	6:30	6.5	Runway and Taxiway closures	55
09/03/06	2:10	6:30	4.3	Runway 25R Electrical Maintenance	26
09/07/06	0:00	6:30	6.5	Runway and Taxiway Closures	44
09/13/06	2:00	6:30	4.5	Runway 25R Rubber Removal Closure	32
09/21/06	2:55	6:30	3.6	Runway 25R Closed/Field Paint	36
10/01/06	0:00	6:30	6.5	Runway 25R closed for contract work	31
10/02/06	2:18	6:30	4.2	Runway 25R closed for contract work	21
10/05/06	2:37	6:30	3.9	Runway 25R closed for LAWA painters and contractor	26
10/06/06	2:48	6:30	3.7	Runway 25R closed for fiber optic work	41
10/13/06	5:05	6:30	1.4	Runway 25R closed for LAWA electrician	19
10/23/06	3:21	6:30	3.2	Runway 25R closed for contractor	17
10/24/06	2:00	6:30	4.5	Runway 25R rubber removal	37
12/03/06	1:55	6:30	4.6	Runway closure 25R	22
12/04/06	2:00	6:30	4.5	Runway closure 25R	21
12/08/06	3:55	6:30	2.6	Runway closure 25R	33

## Easterly Departures Between 00:00 and 06:30

Easterly departures between 00:00 and 06:30 during over-ocean operations or westerly operations



# Easterly Departures During Over-ocean Operations

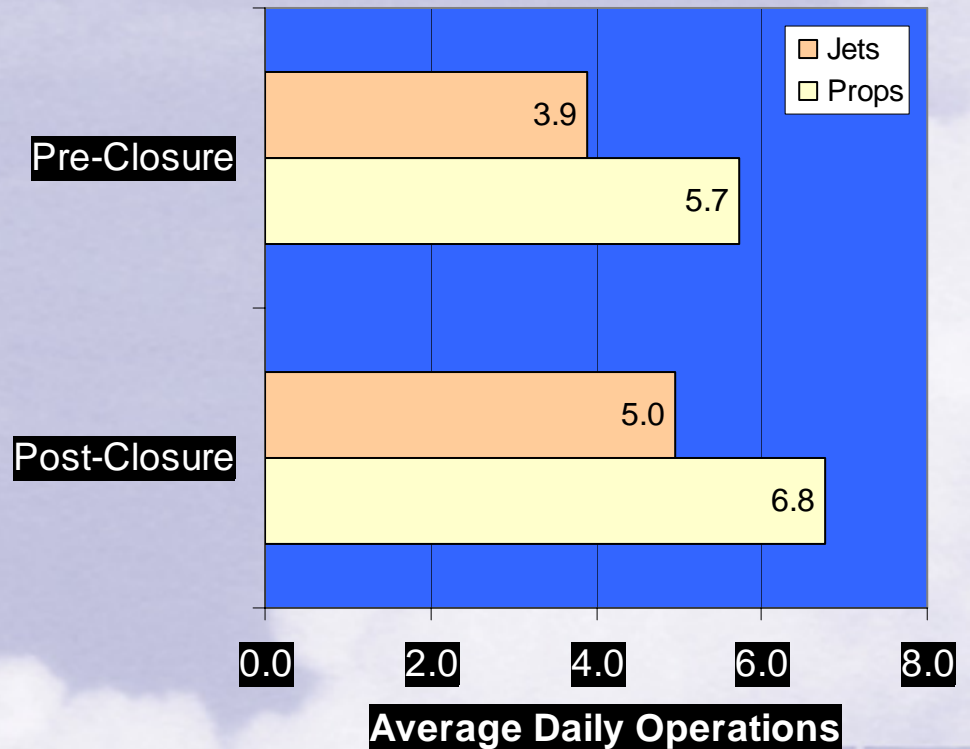
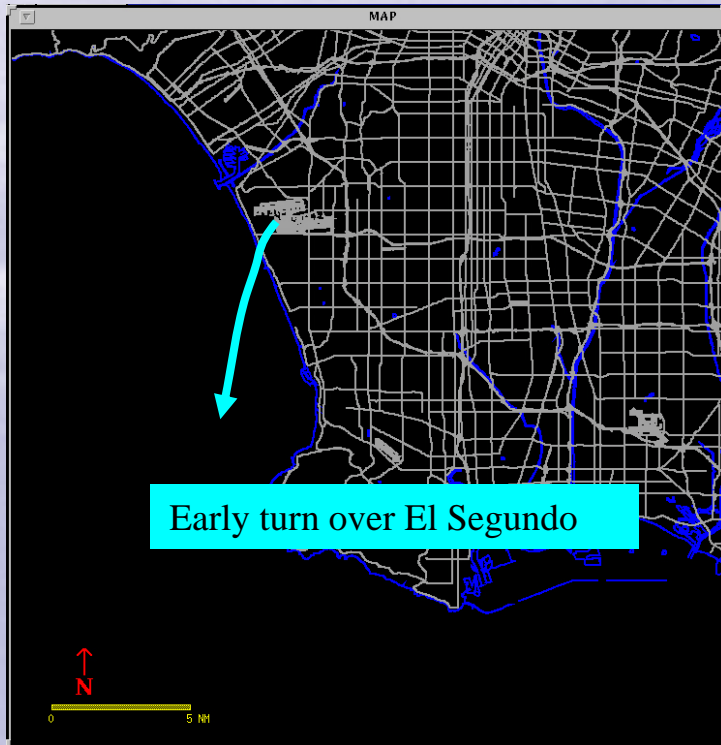


We fly as

ONE

## Early Turns– South

Aircraft departing to west to maintain runway heading past shoreline before turning south



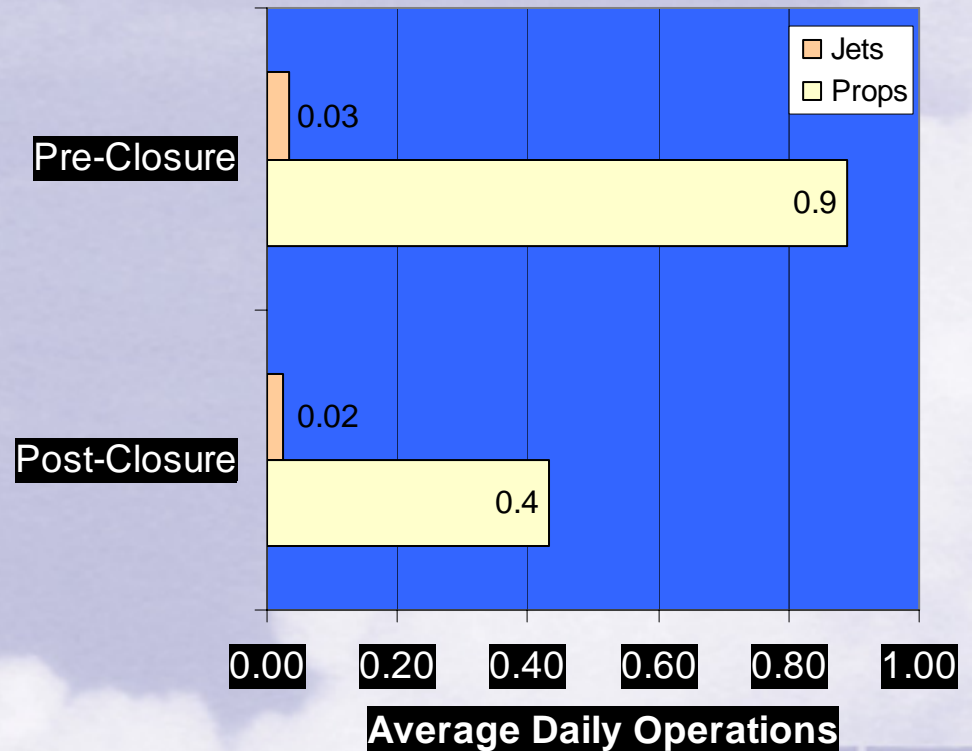
We fly as

ONE



## Early Turns – North

Aircraft departing to west to maintain runway heading past shoreline before turning south

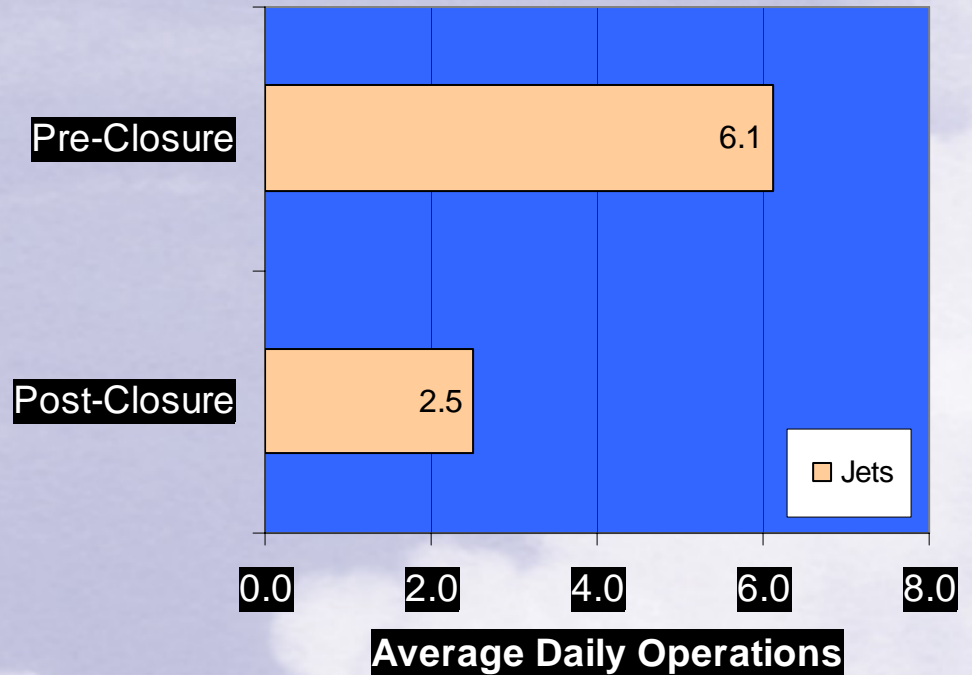


We fly as

ONE

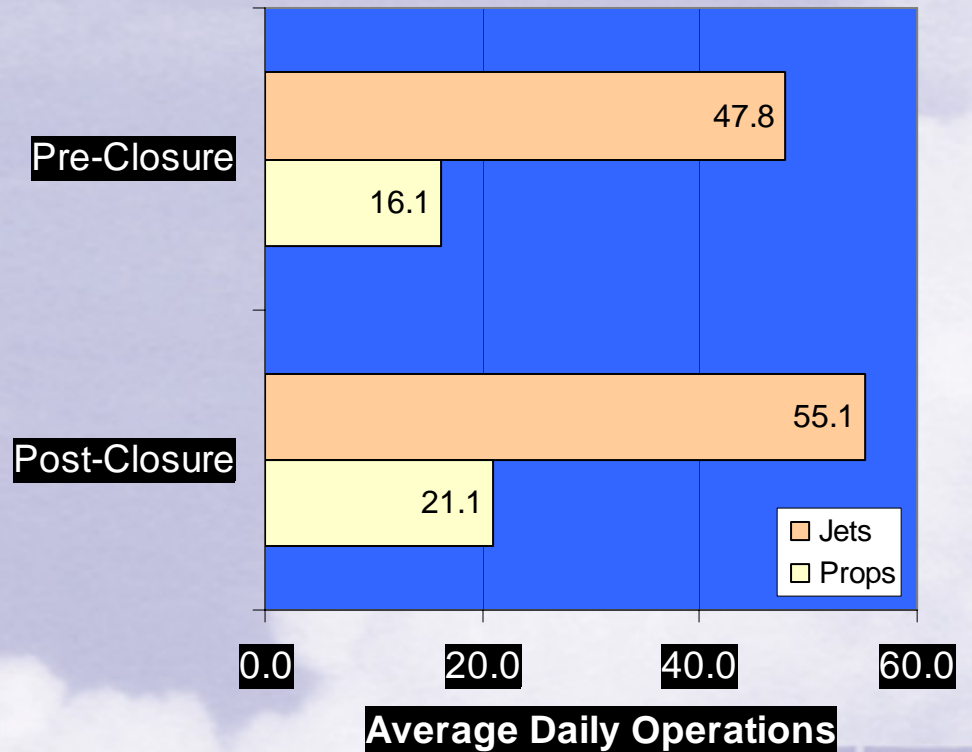
## Short Turn Arrivals

Arriving jet aircraft to fly base leg of arrival over or east of the Harbor Freeway



# Monterey Park

Monitoring north arrivals  
extending downwind over  
Monterey Park boundary

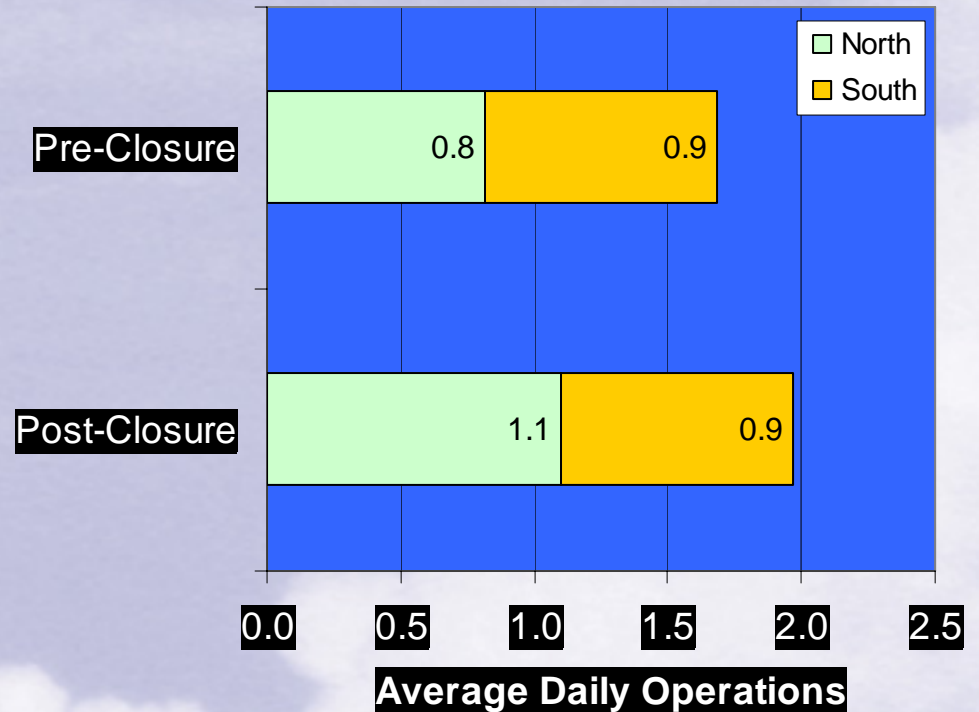
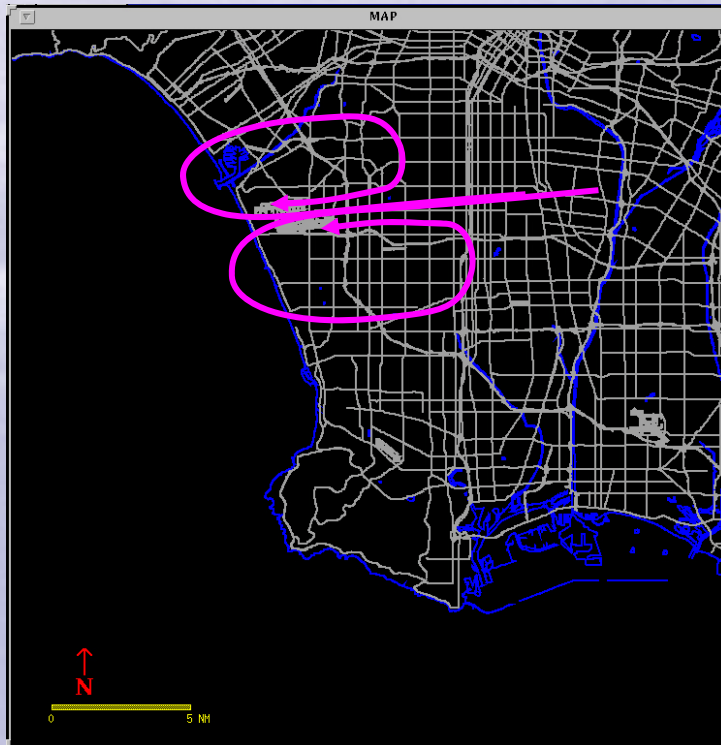


We fly as

ONE

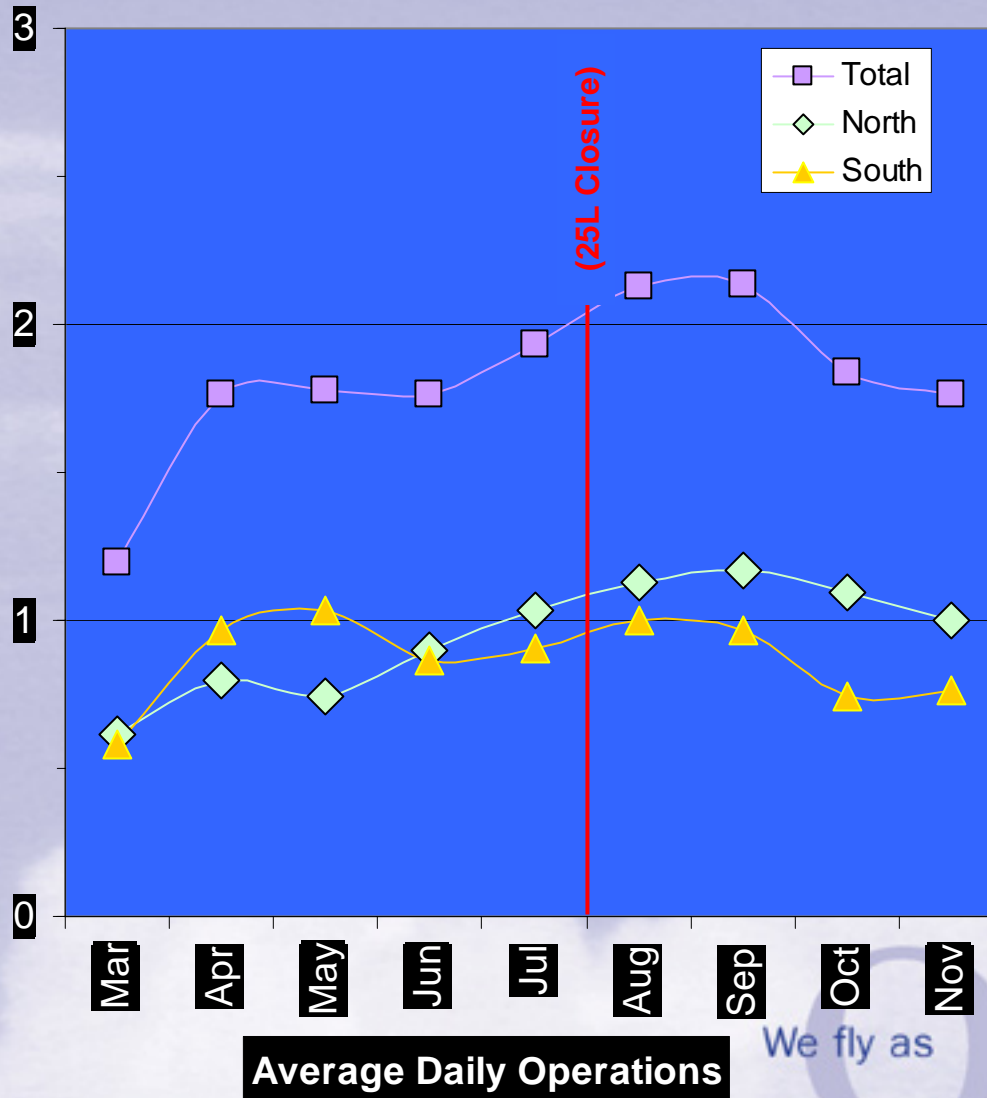
# Go-Arounds

Monitoring pilot or ATC initiated go-arounds or missed approaches





# Go-Arounds

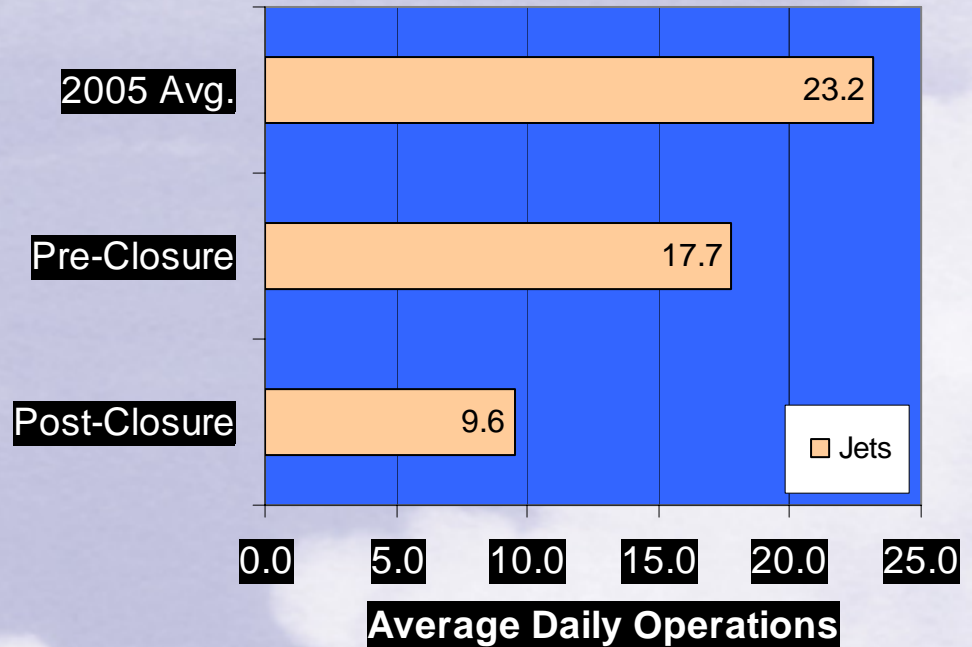
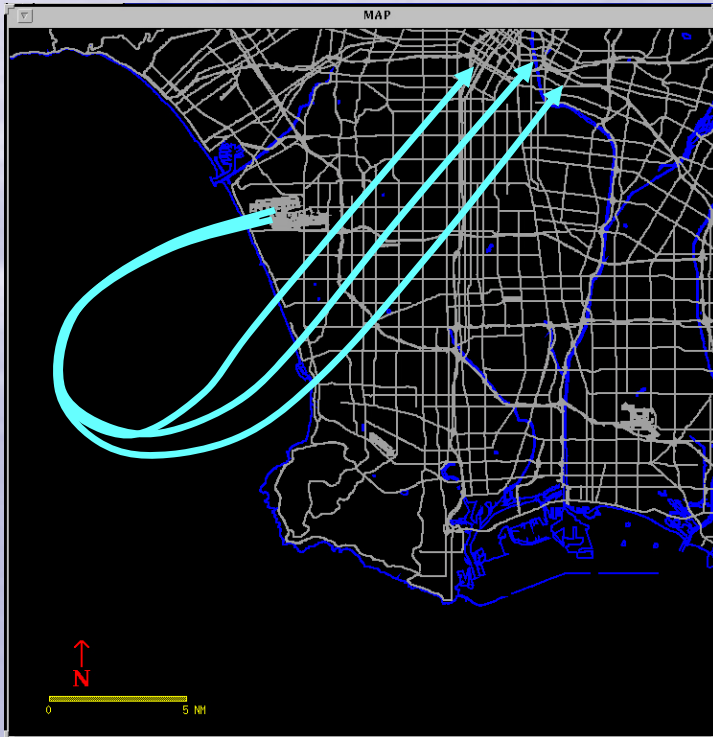


We fly as

ONE

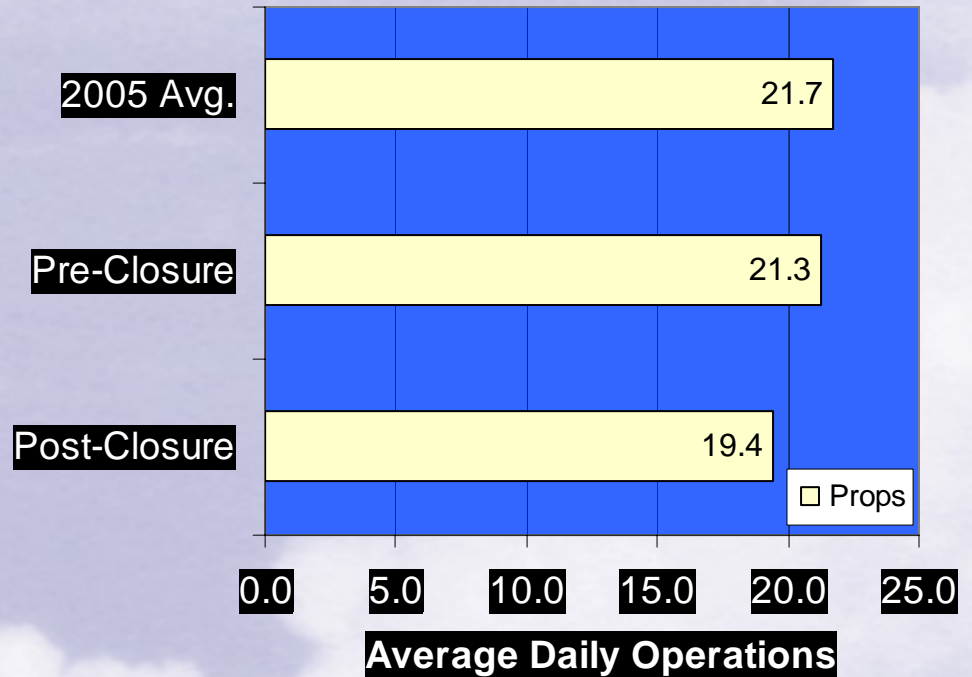
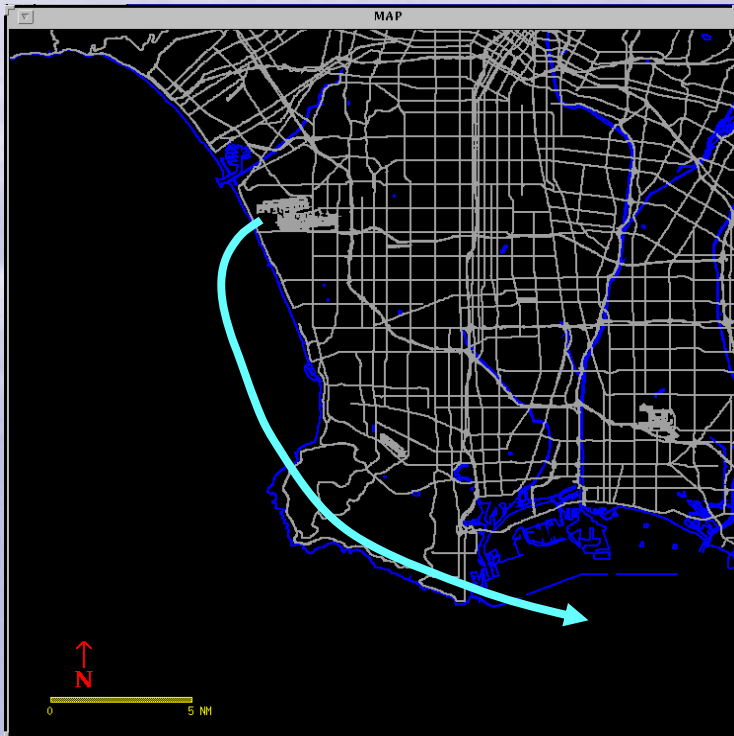
# LAX Loop Departure – Community Overflight

Monitoring loop departures  
overflying Manhattan Beach,  
Hermosa Beach, Redondo Beach



# Palos Verdes - Turboprops

Monitoring southbound  
turboprops departing LAX that  
overfly Peninsula

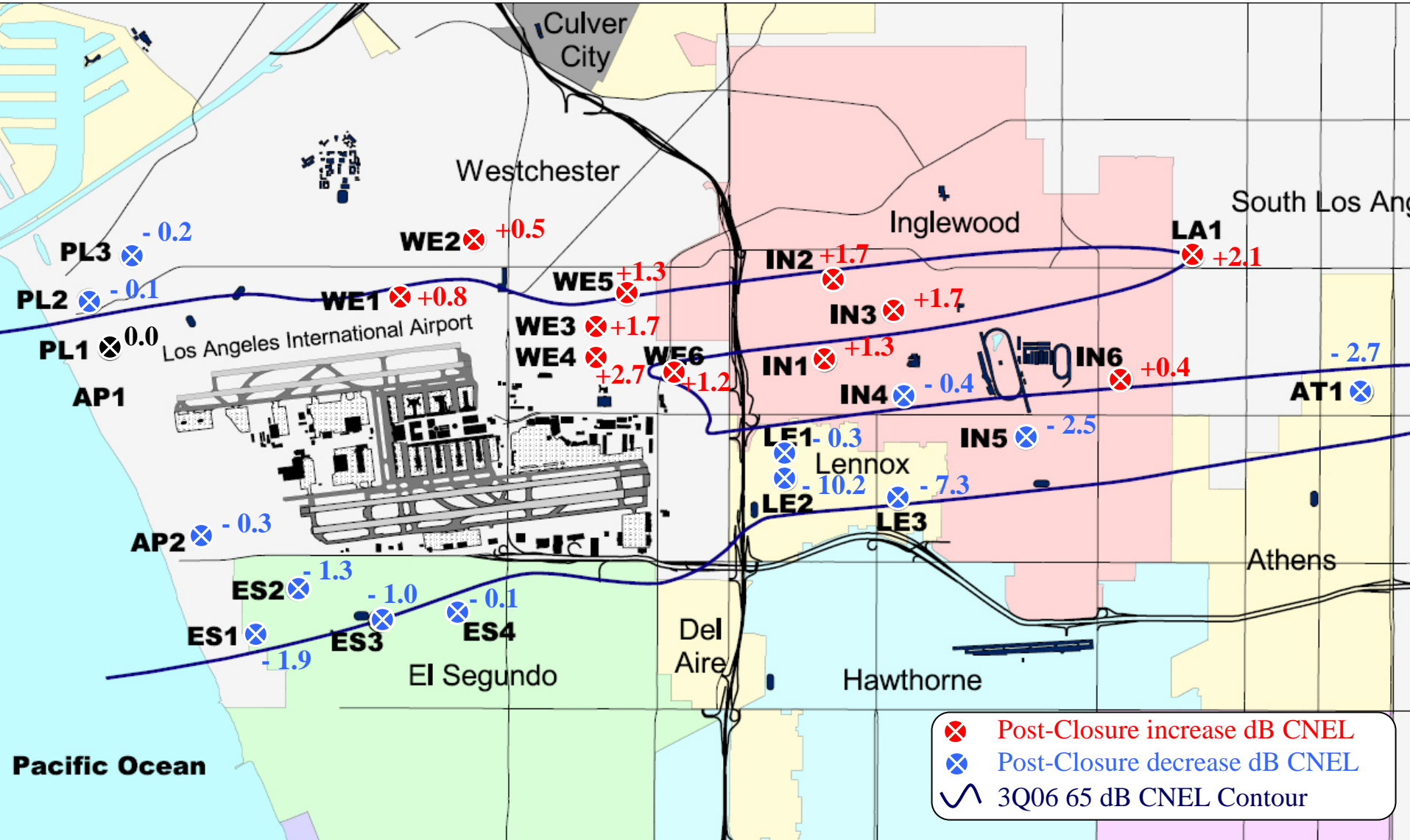


# Noise Analysis

- Data Analyzed:
  - Monthly dB CNEL at each noise monitor
- “Pre-Closure” Data:
  - March-July 2006
- “Post-Closure” Data:
  - September-November 2006



# Noise Analysis

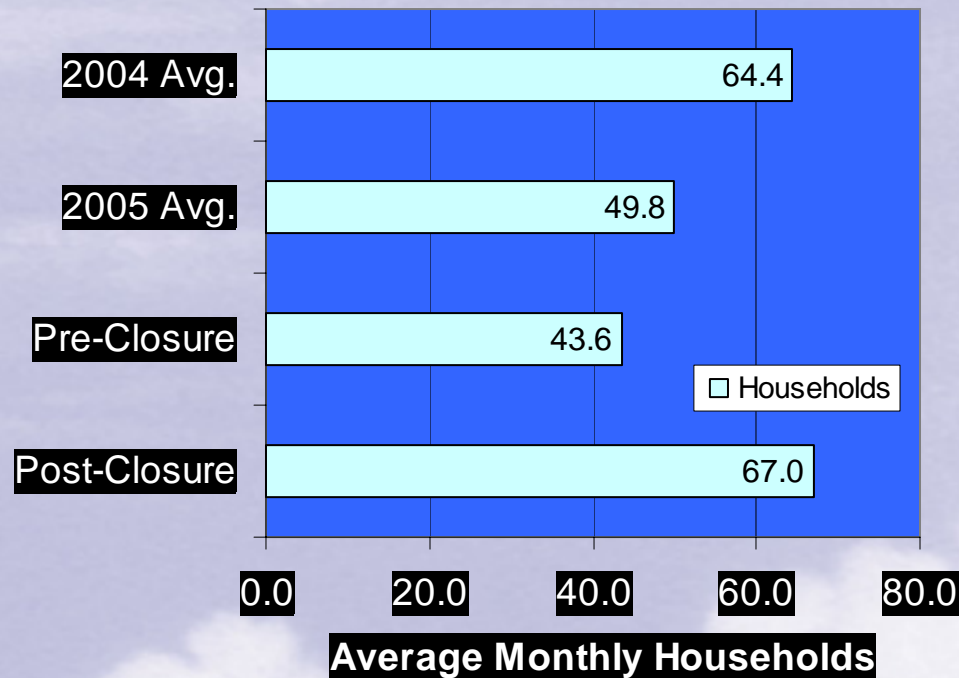


# Complaints Analysis

- Data Analyzed:
  - Monthly Totals of Households Submitting Complaints
- “Pre-Closure” Data:
  - March-July 2006
- “Post-Closure” Data:
  - August-November 2006

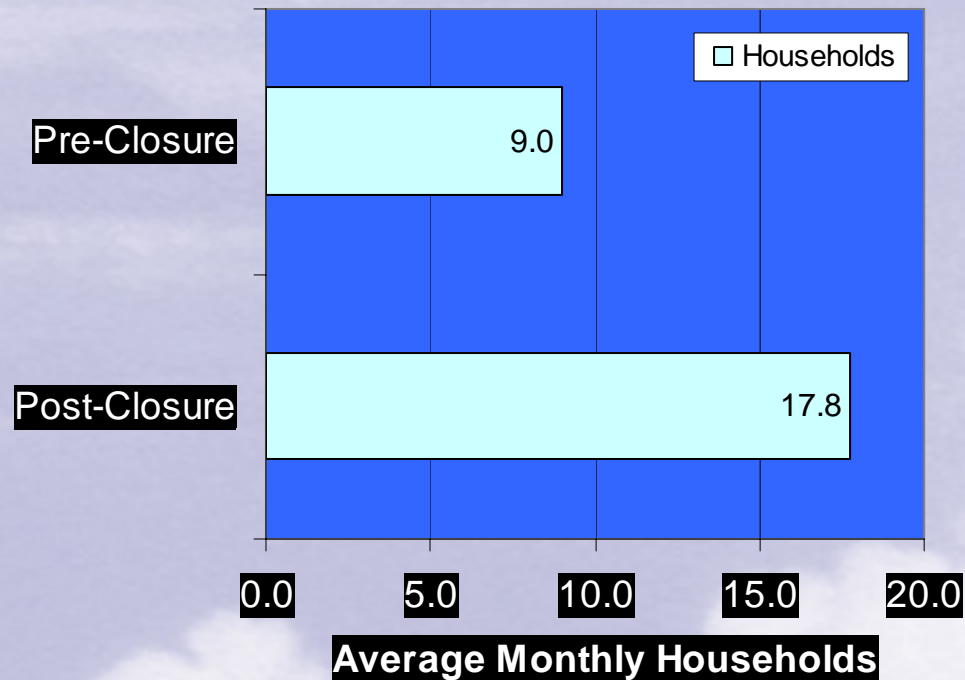
# Complaints – Total Households Submitting Complaints

## All Cities



# Complaints – Total Households Submitting Complaints

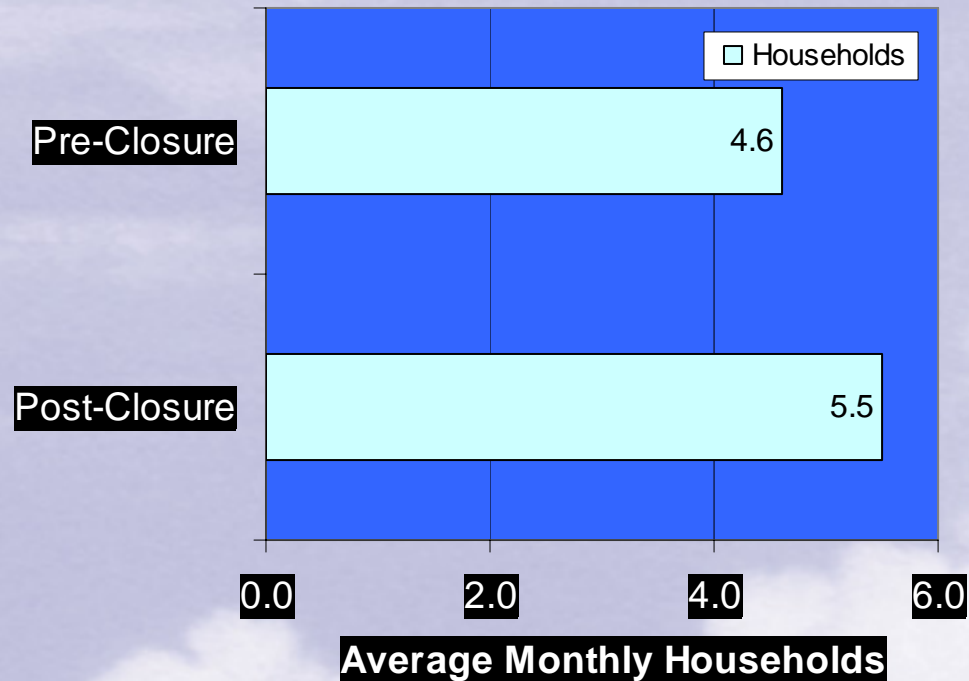
## Inglewood





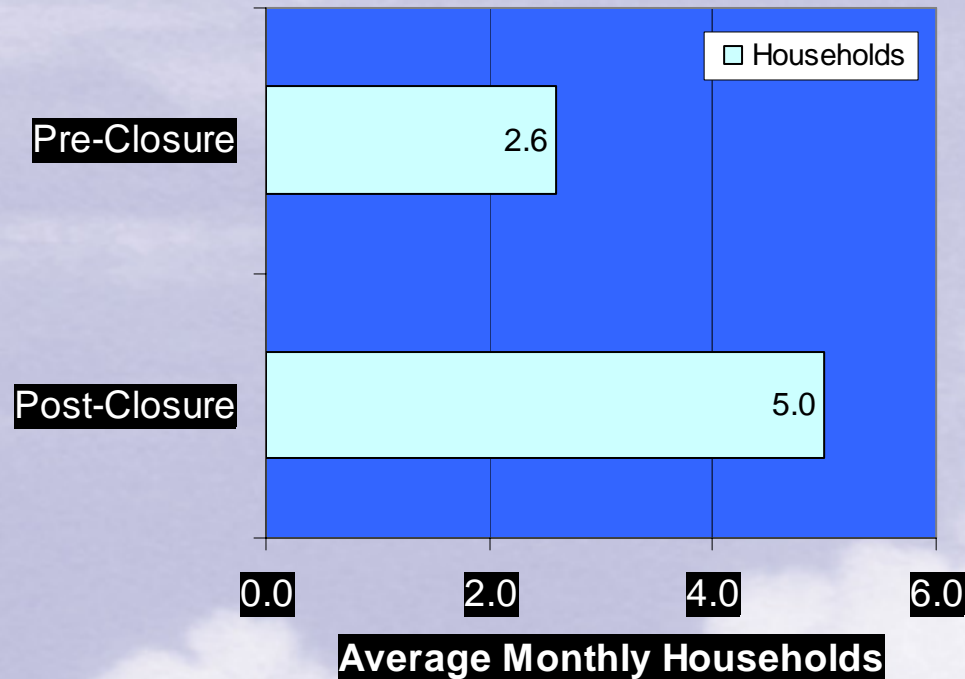
# Complaints – Total Households Submitting Complaints

## Los Angeles



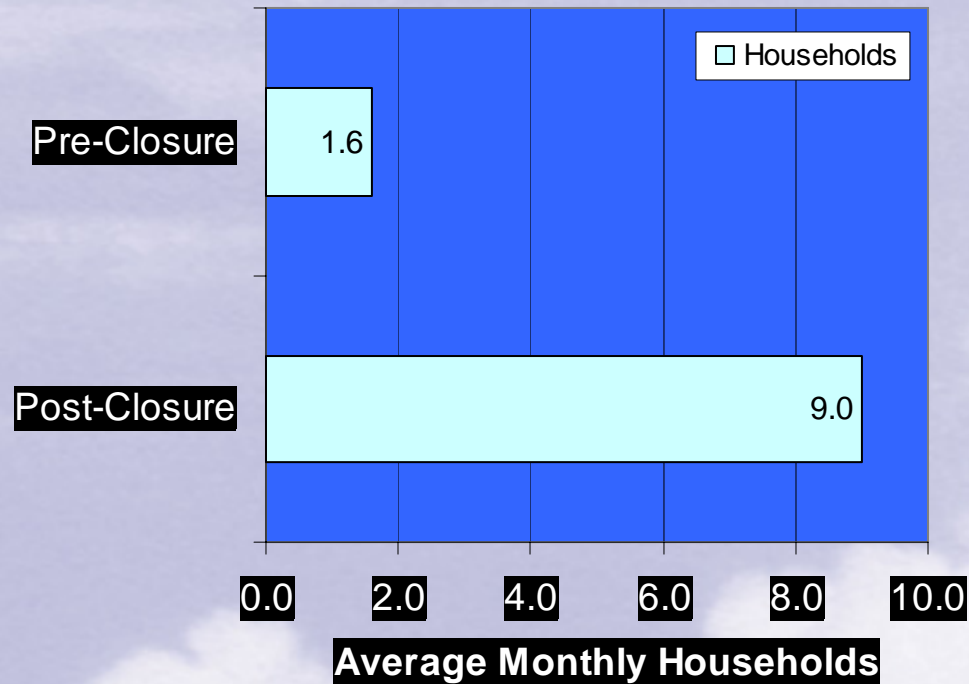
# Complaints – Total Households Submitting Complaints

## Monterey Park



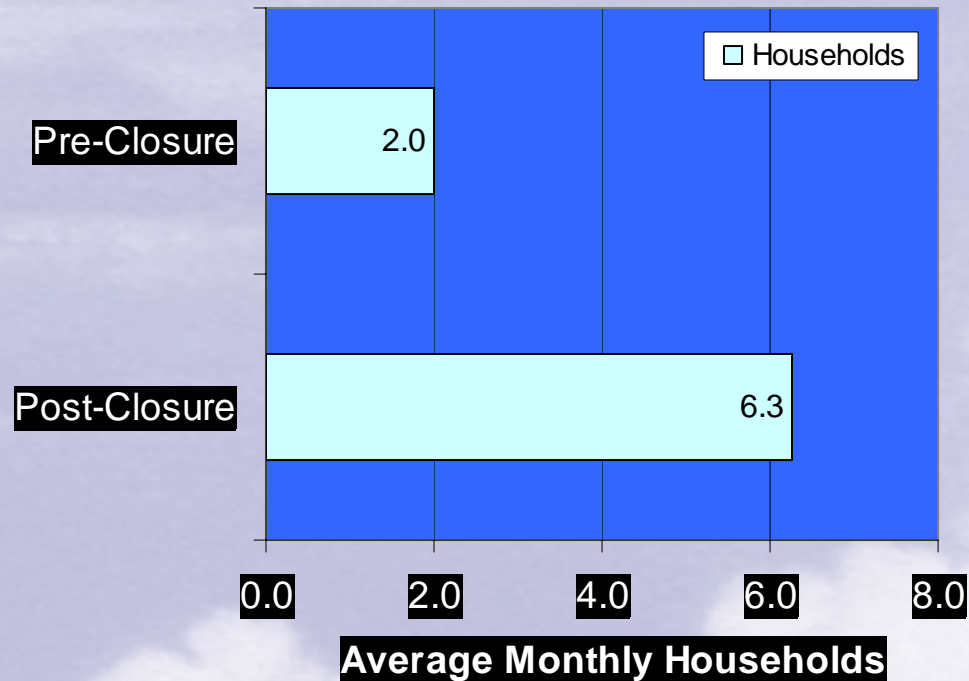
# Complaints – Total Households Submitting Complaints

## Westchester



# Complaints – Total Households Submitting Complaints

## Playa Del Rey





# Complaints – Total Households Submitting Complaints

## El Segundo

