



Statistical Update on Aircraft Operating Procedures

May 12, 2010

LAX/Community Noise Roundtable



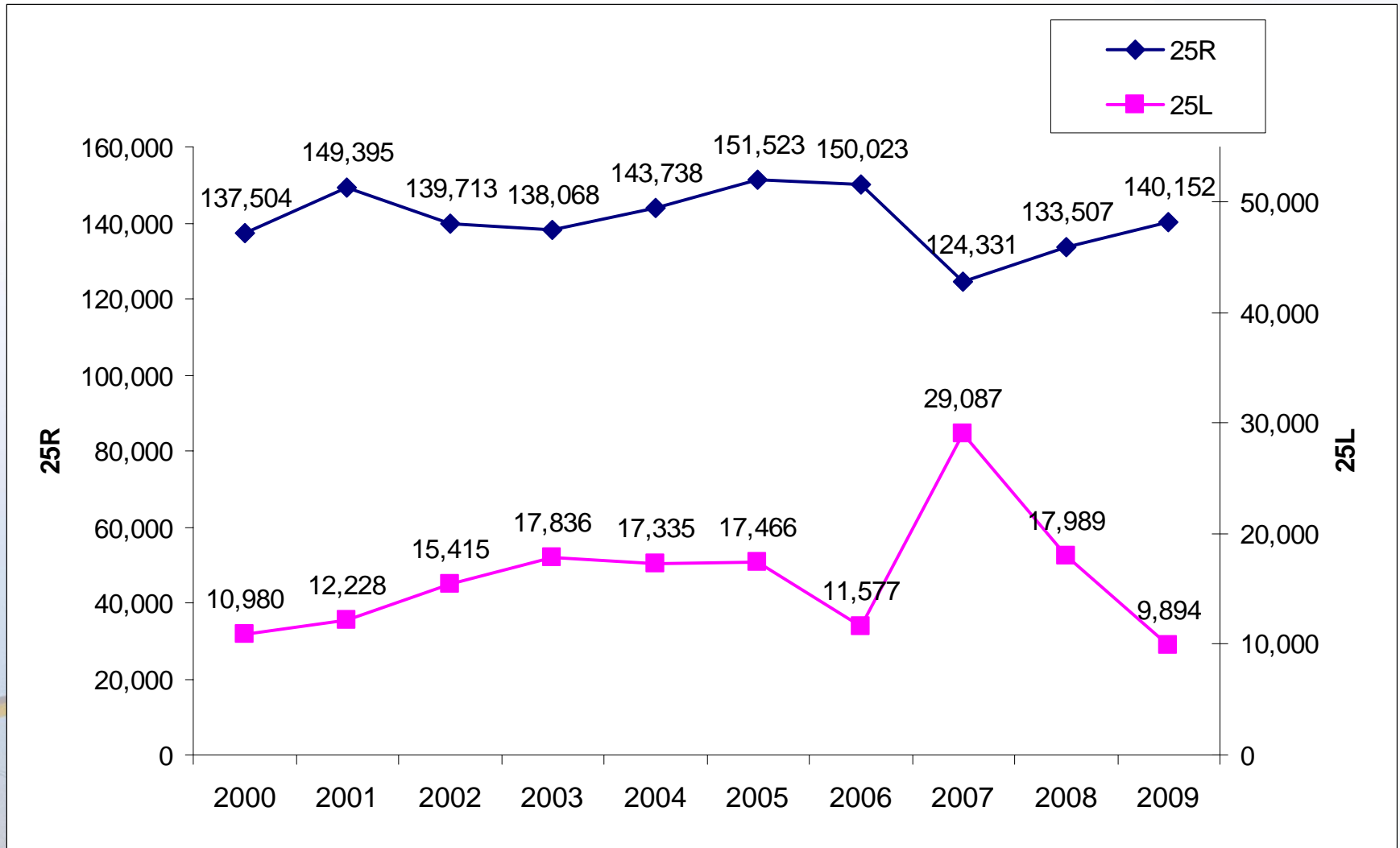
Overview

Statistical information on the following operations:

- 25L Departures
- Early Turns
- Go-arounds
- Palos Verdes Overflights
- Short Turns
- Extended Downwind Approach
- East Departures
- Loop Departures

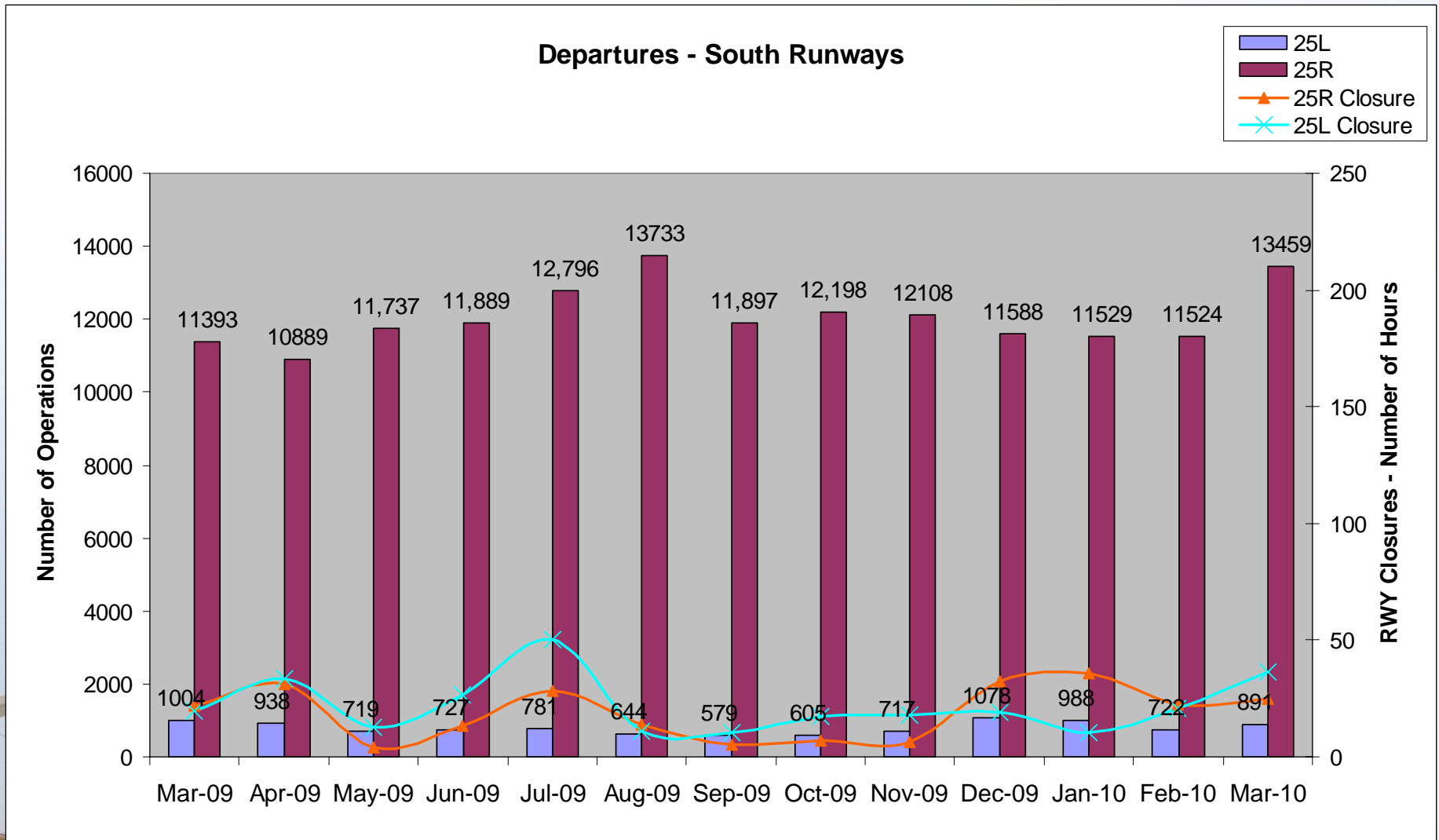


Departures – Runways 25L and 25R Annual Comparison



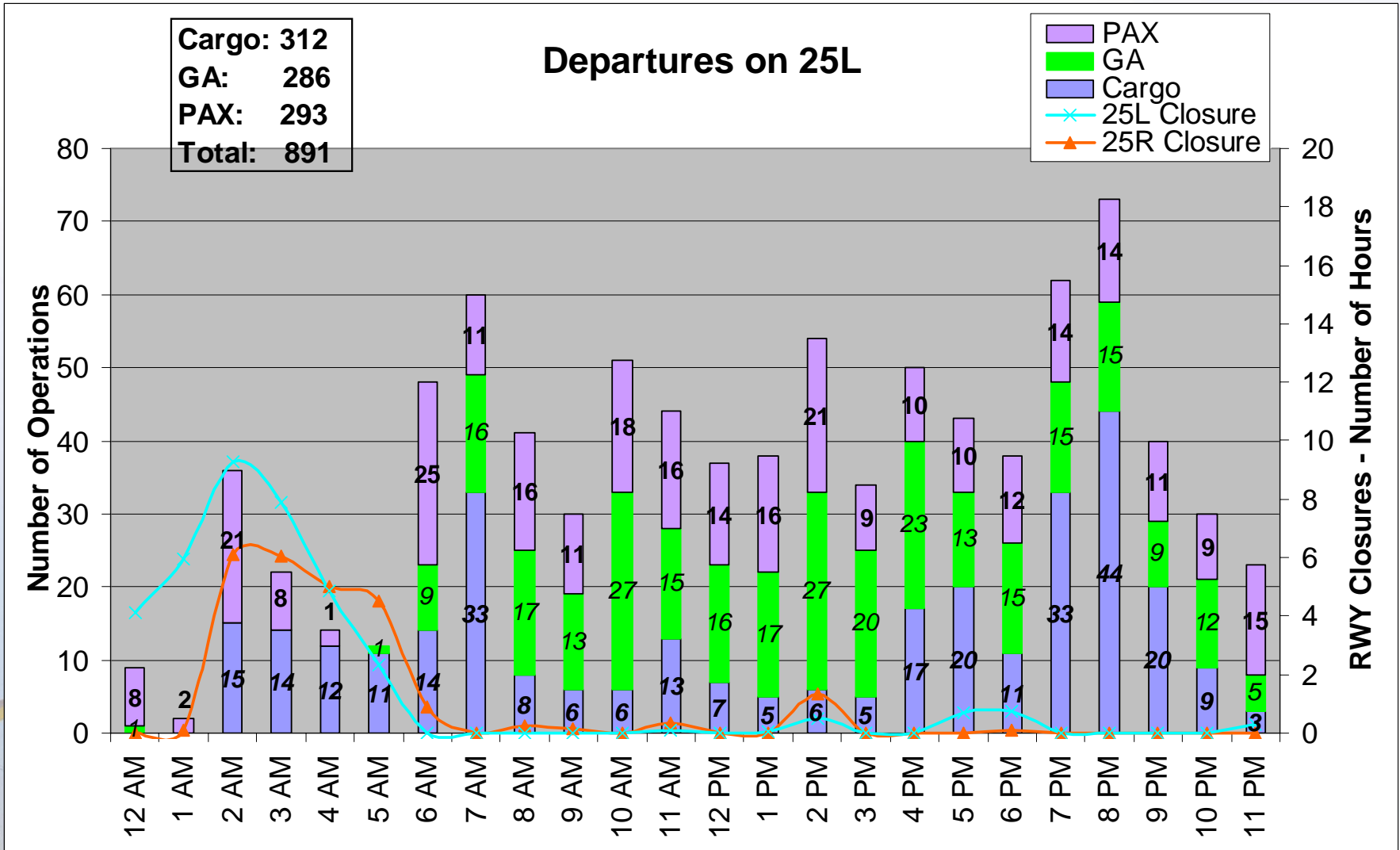
Departures – Runways 25L and 25R

13-month period



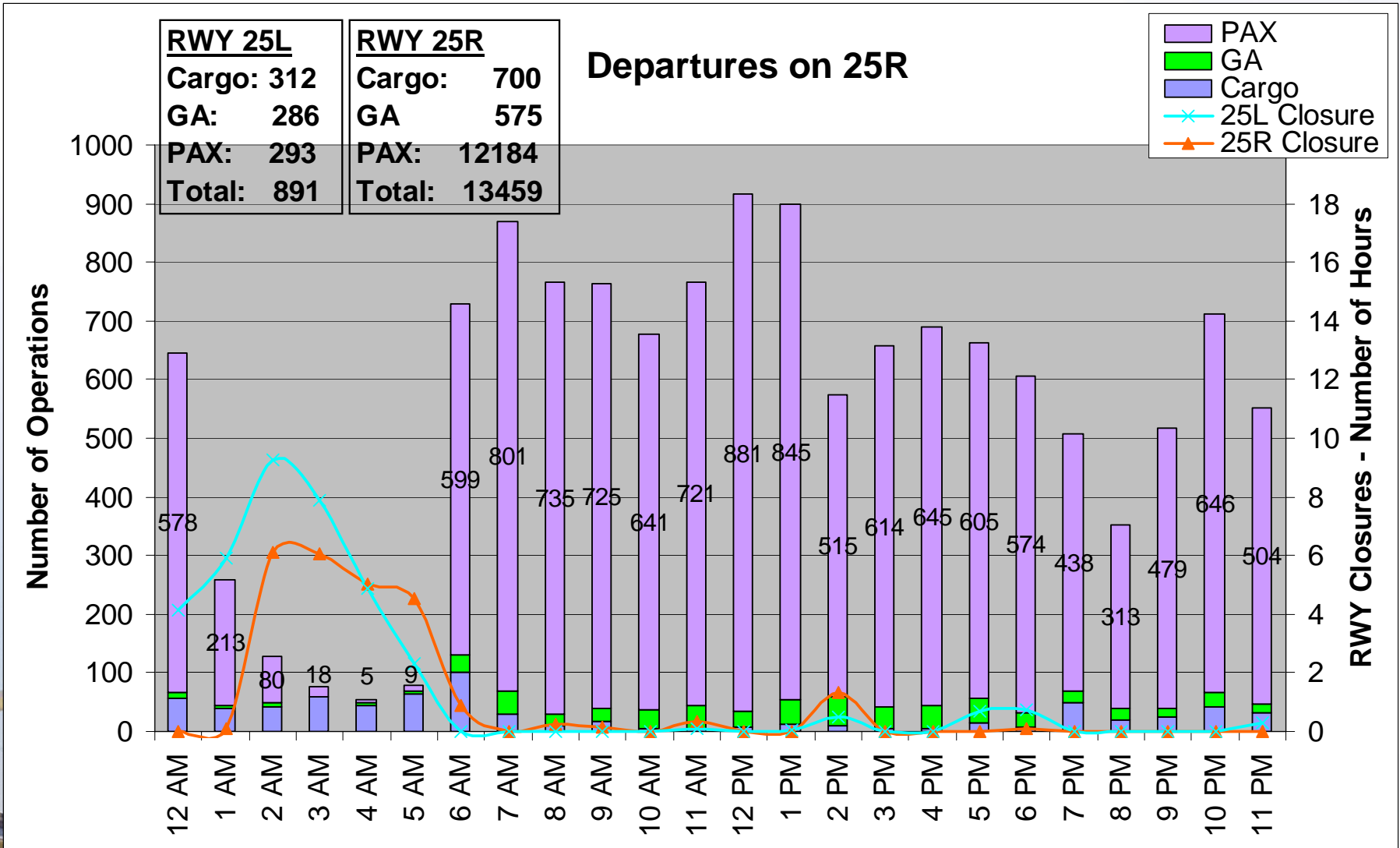
Time of Day by Operator on 25L

March 2010



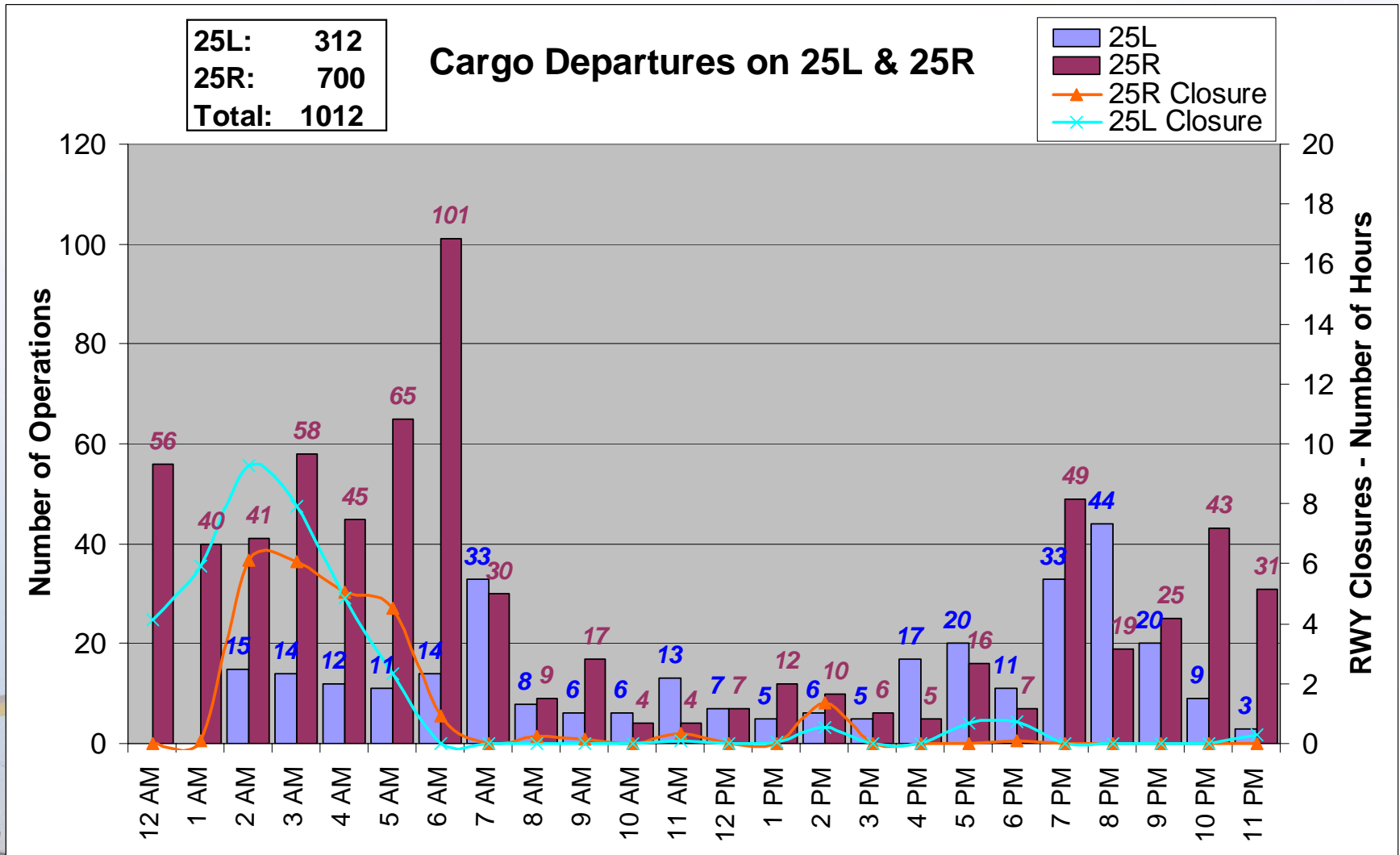
Time of Day by Operator on 25R

March 2010



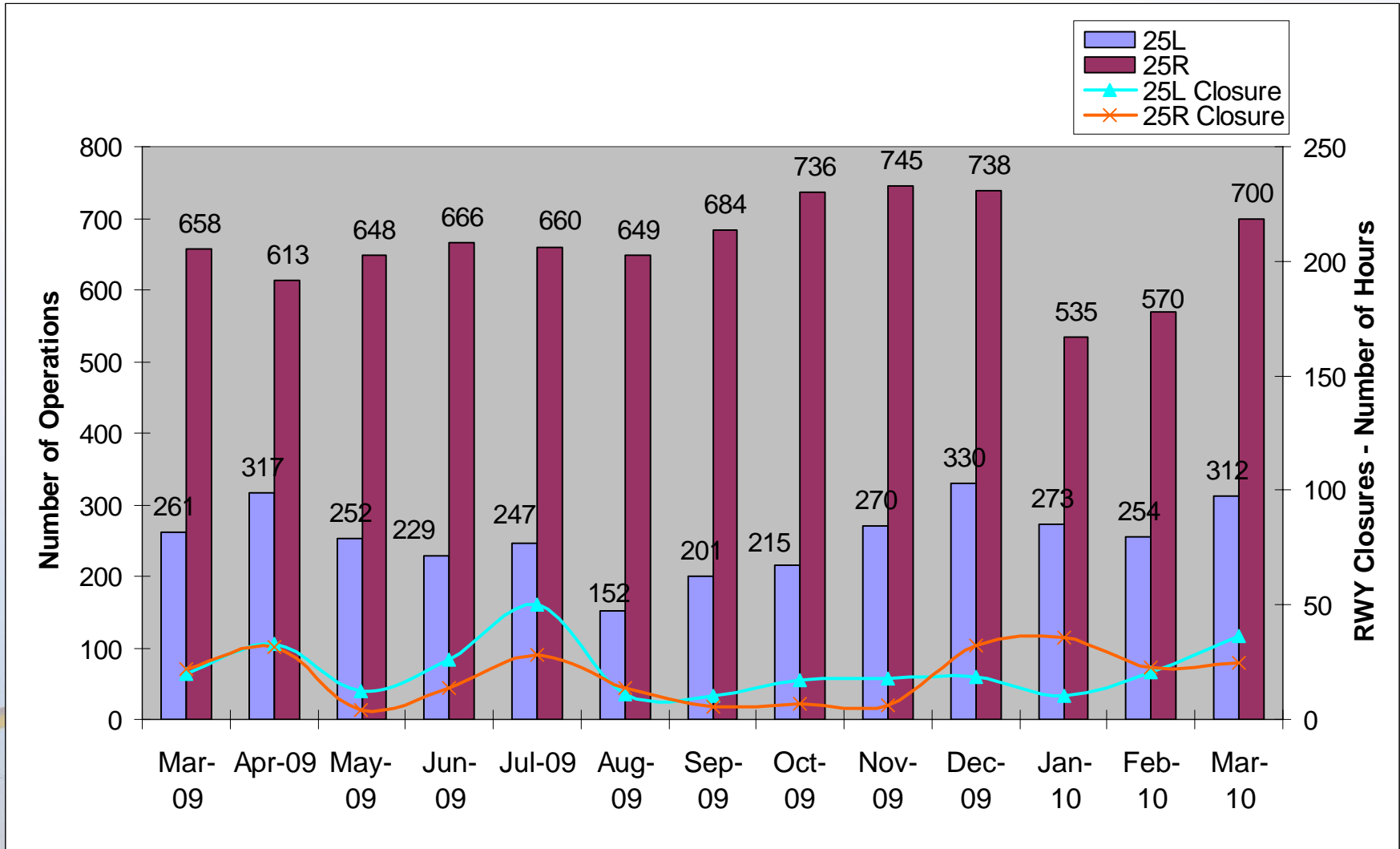
Time of Day – Cargo Only

March 2010

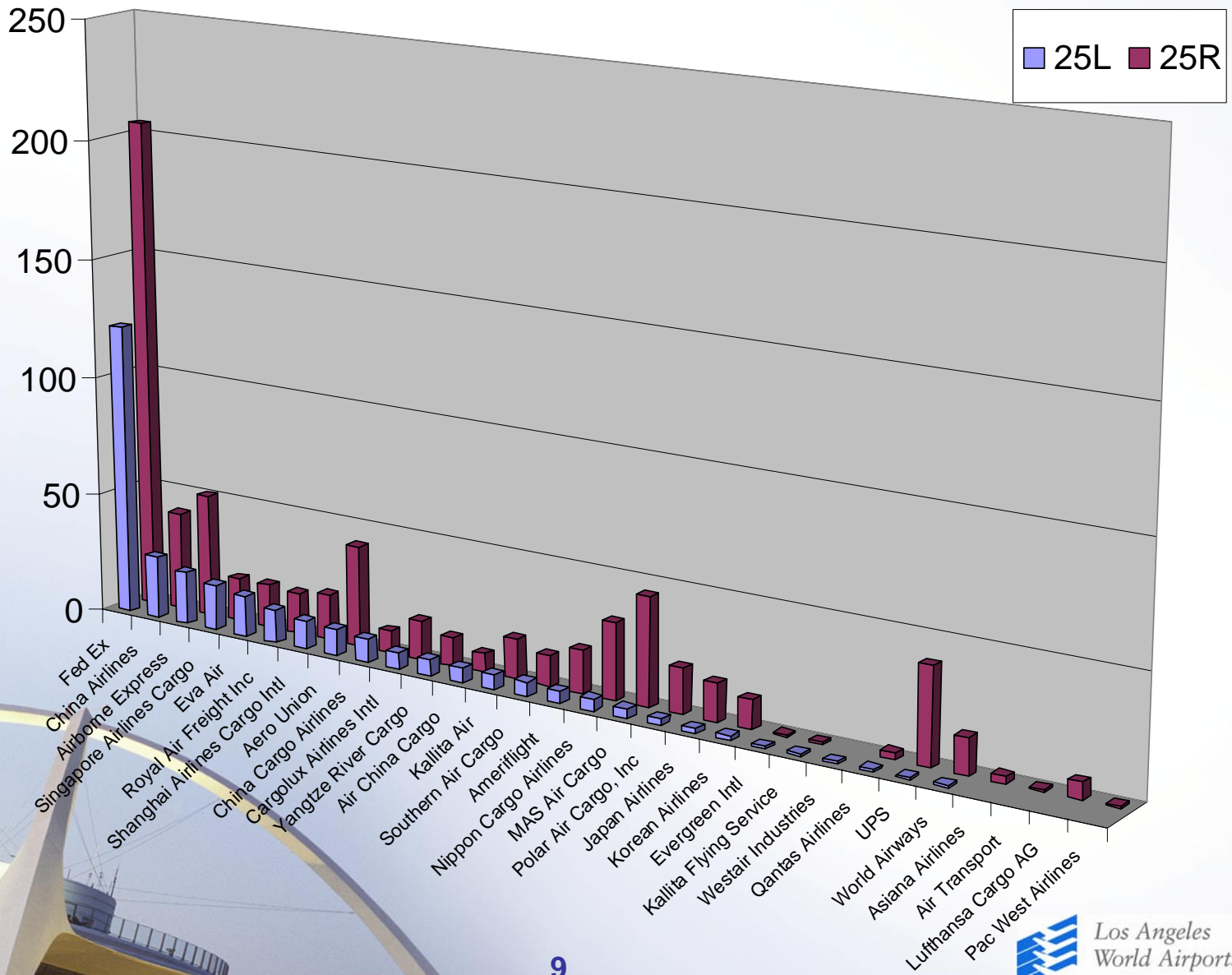


Cargo Departures on 25L & 25R

13-month period

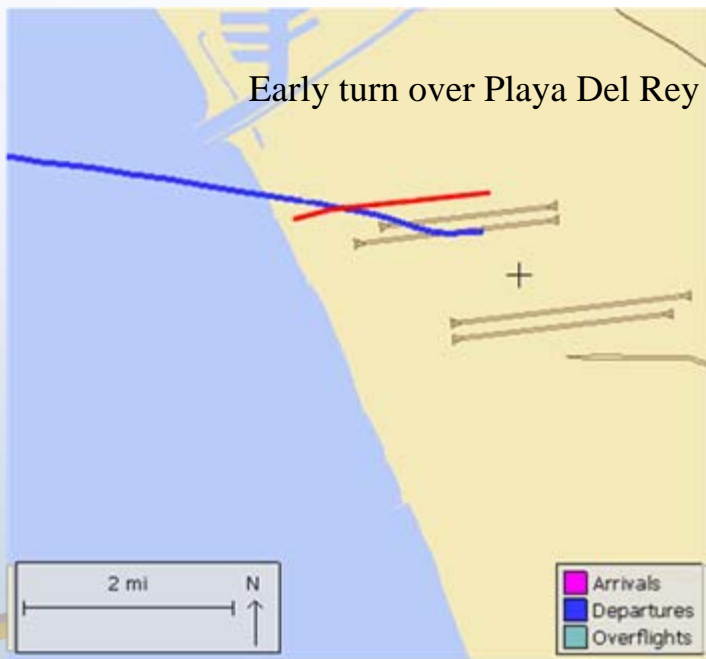


Air Cargo Departures on 25L & 25R March 2010

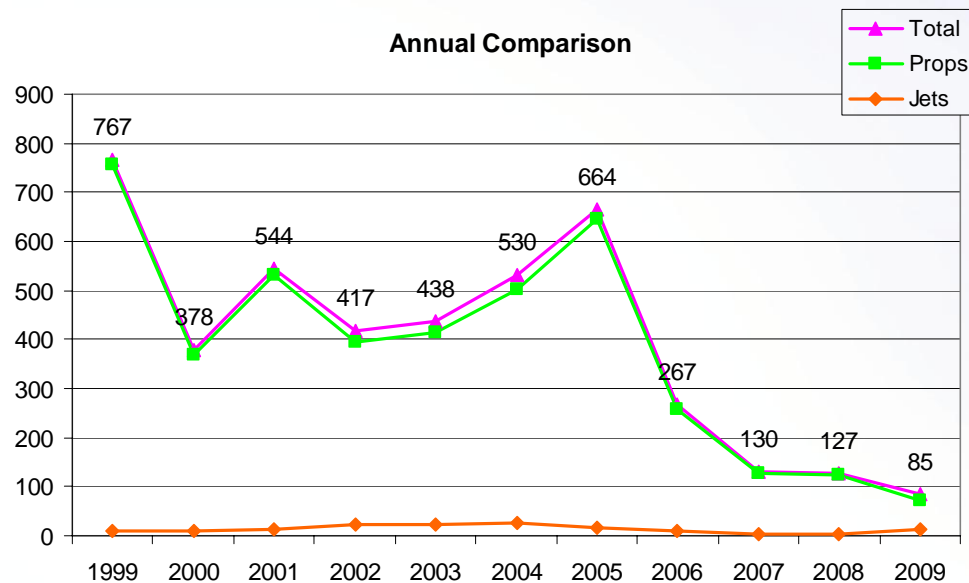


Early Turn to the North

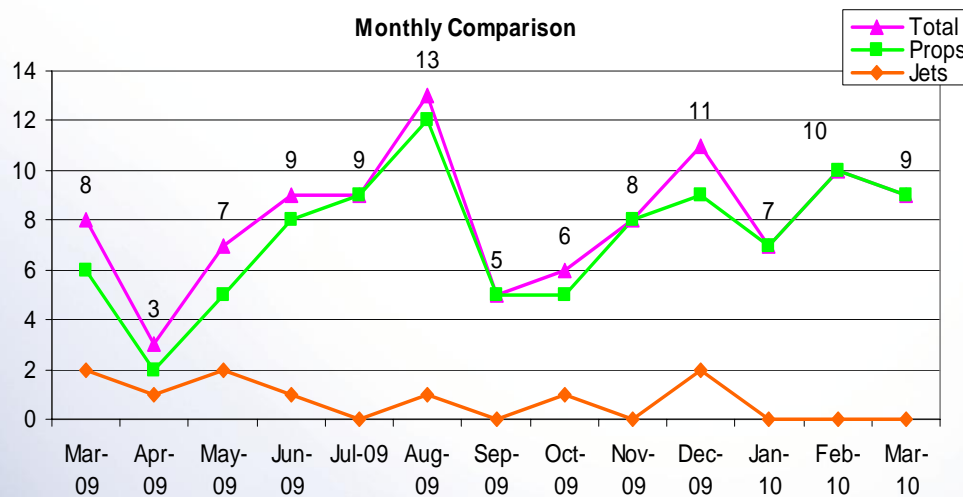
Aircraft departing to the ocean turn early prior to reaching the shoreline



Annual Comparison

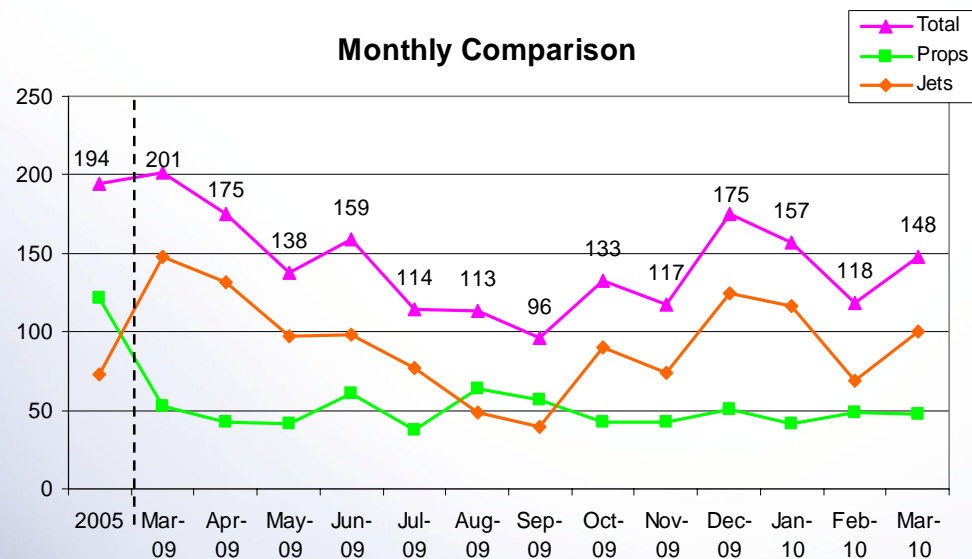
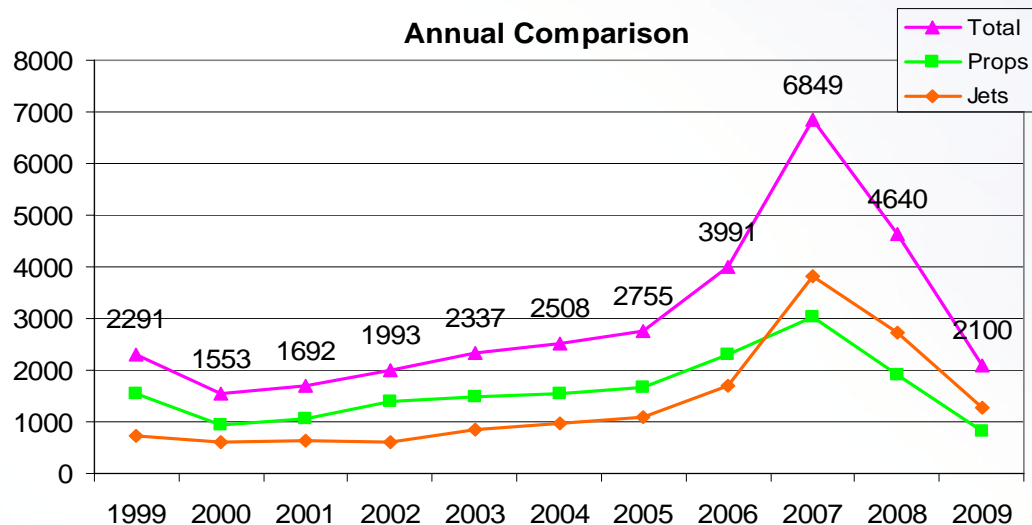
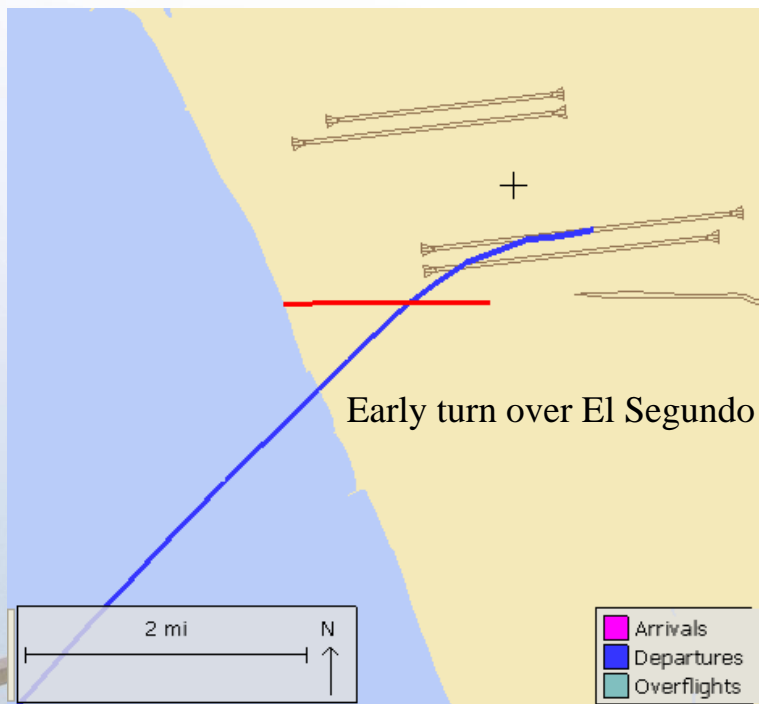


Monthly Comparison



Early Turn to the South

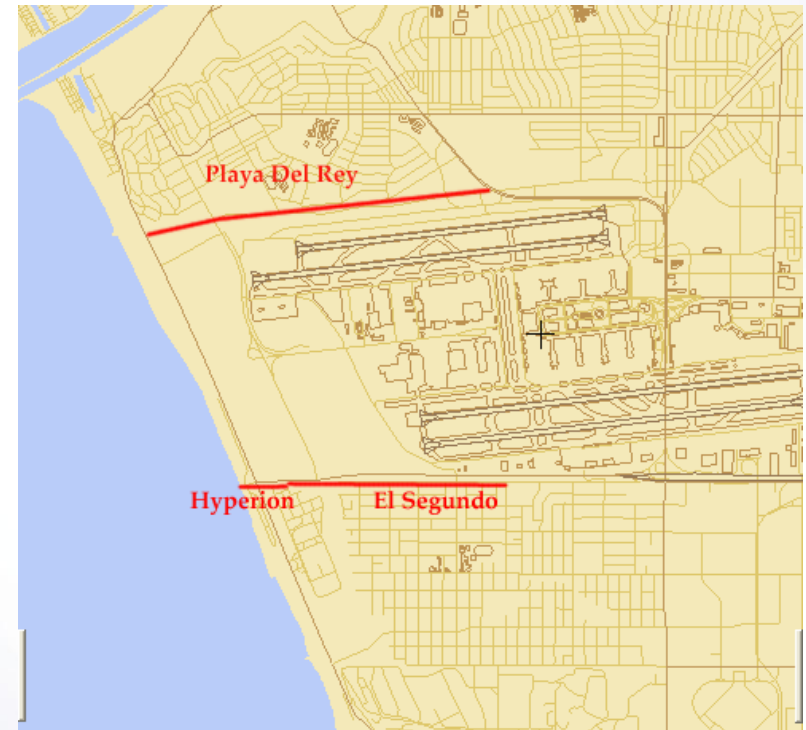
Aircraft departing to the ocean turn early prior to reaching the shoreline



Early Turns Breakdown

March 2010

Total Early Turn Ops	157
Hyperion Gate	120
El Segundo Gate	28
Playa Del Rey Gate	9

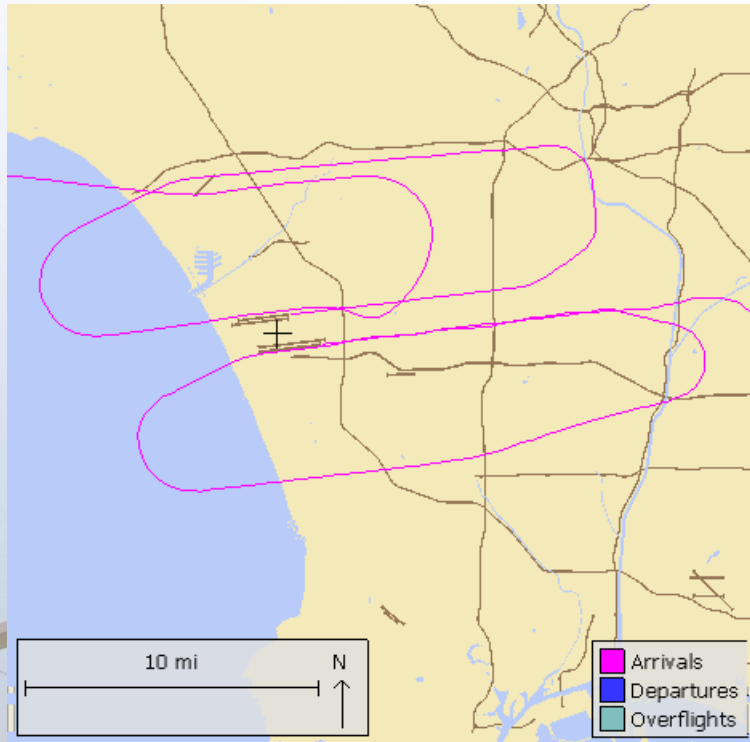


Result of Investigation

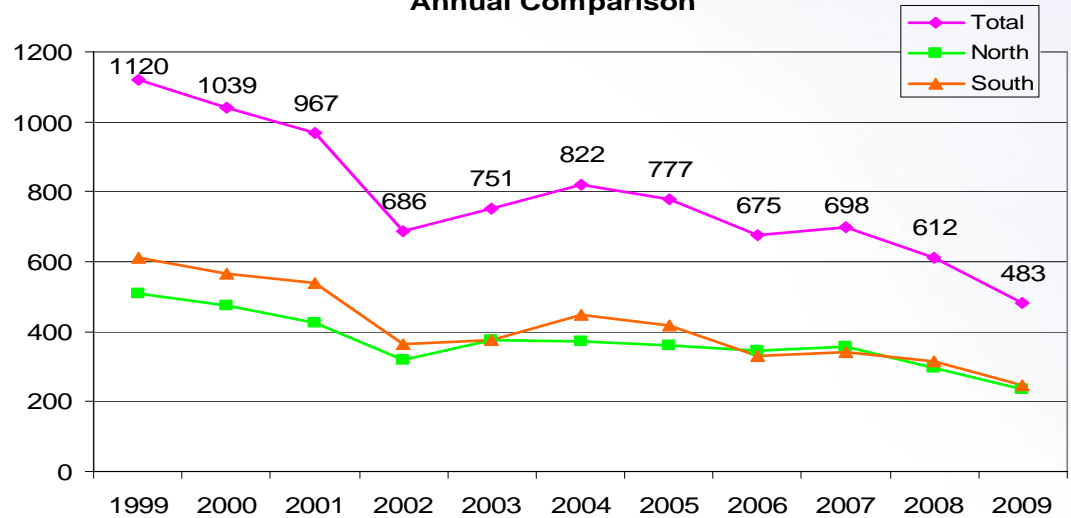
Total	37
FAA instructed	13
Pilot initiated	19
Wind drift	4
Unknown	1

Go-Arounds

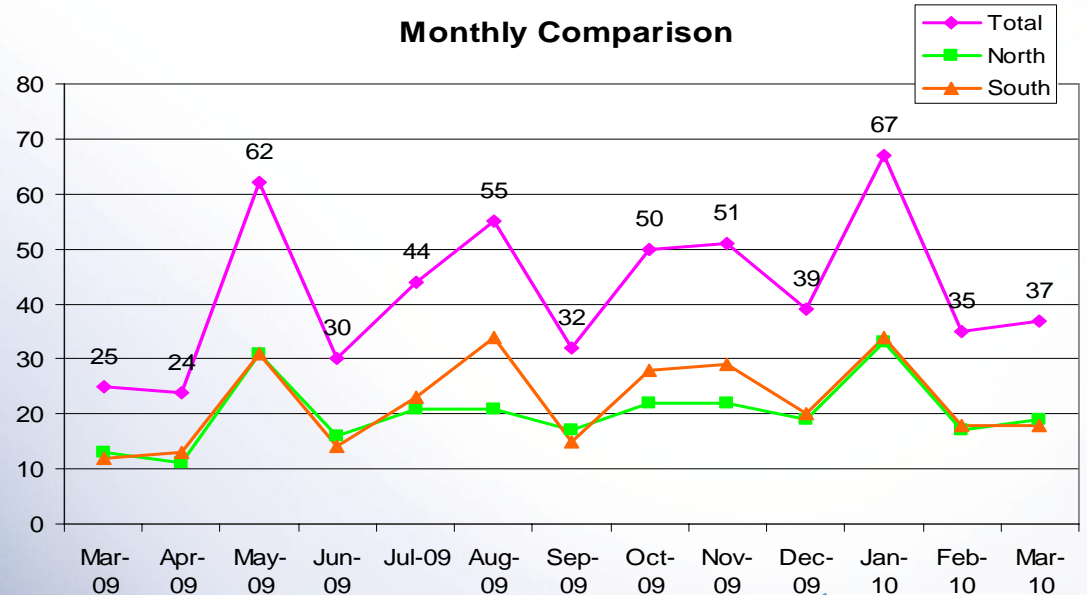
Monitoring pilot or ATC initiated go-arounds or missed approaches



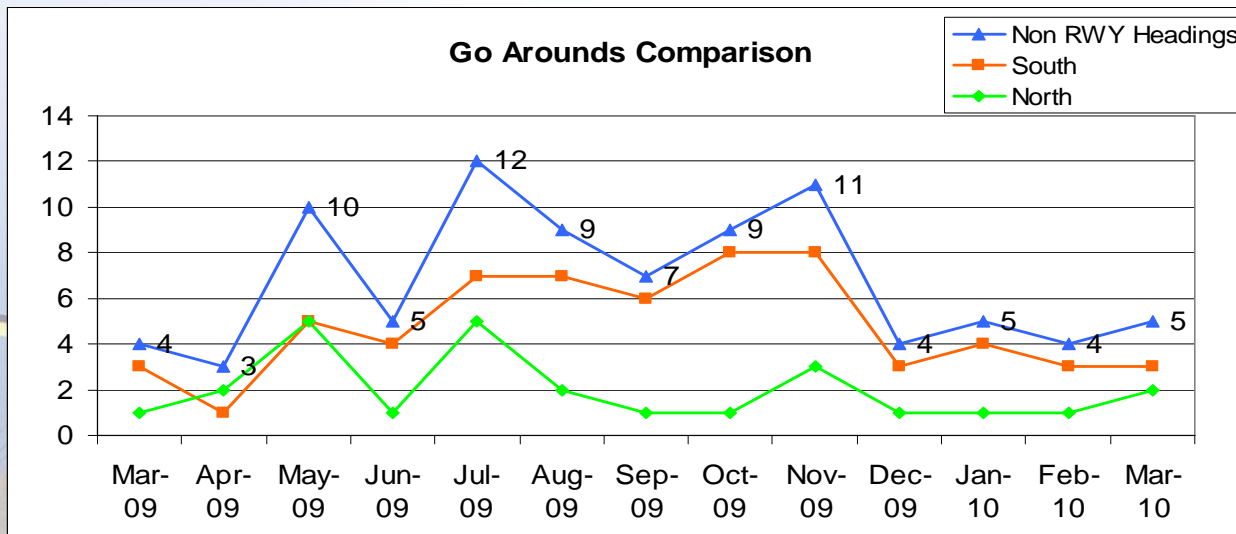
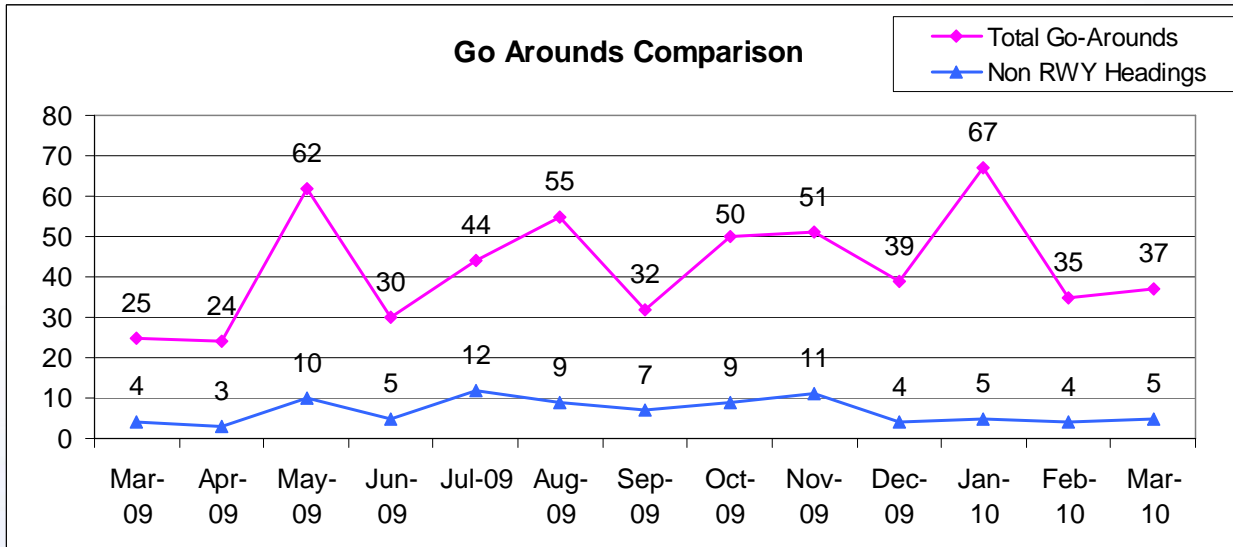
Annual Comparison



Monthly Comparison

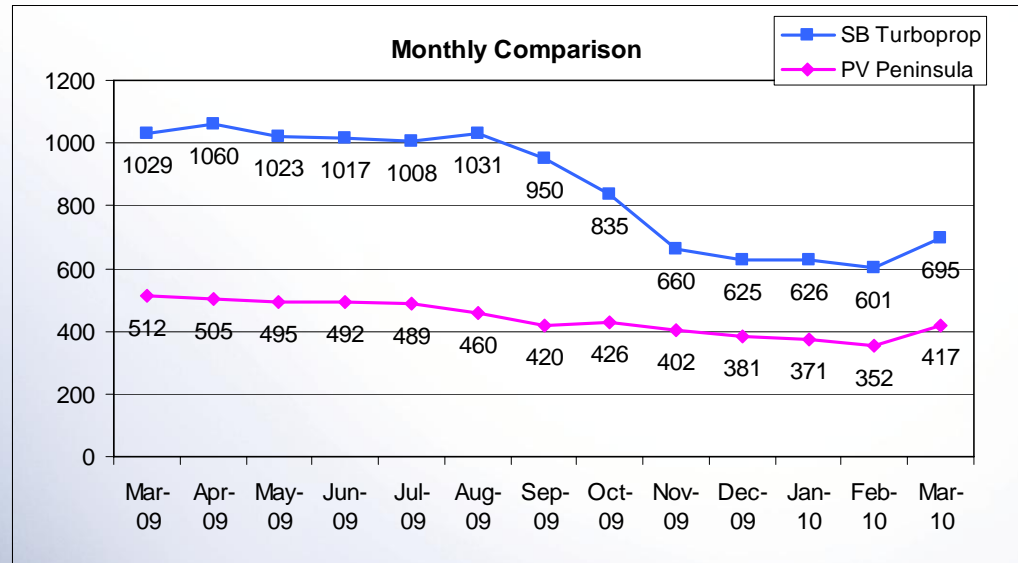
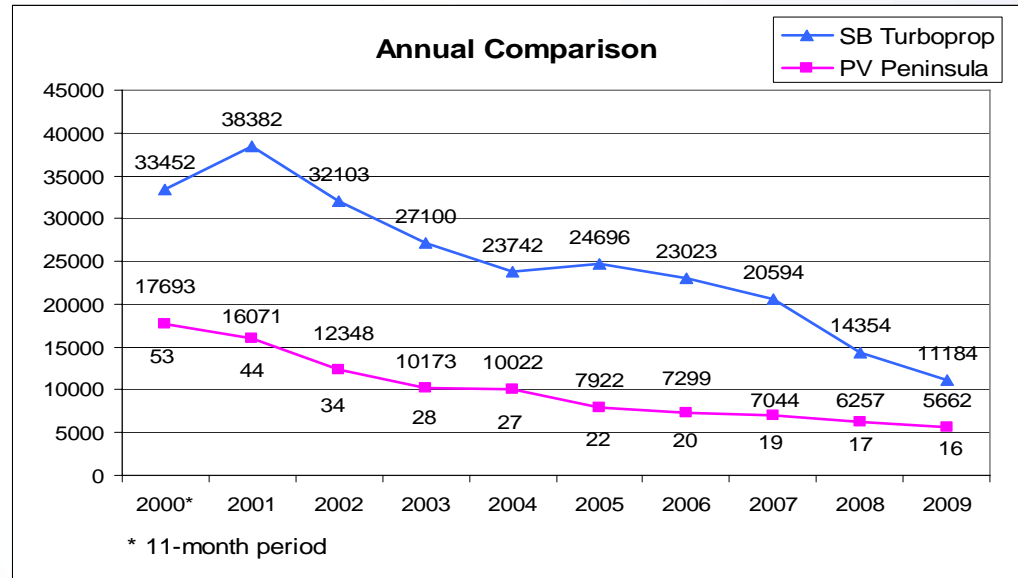
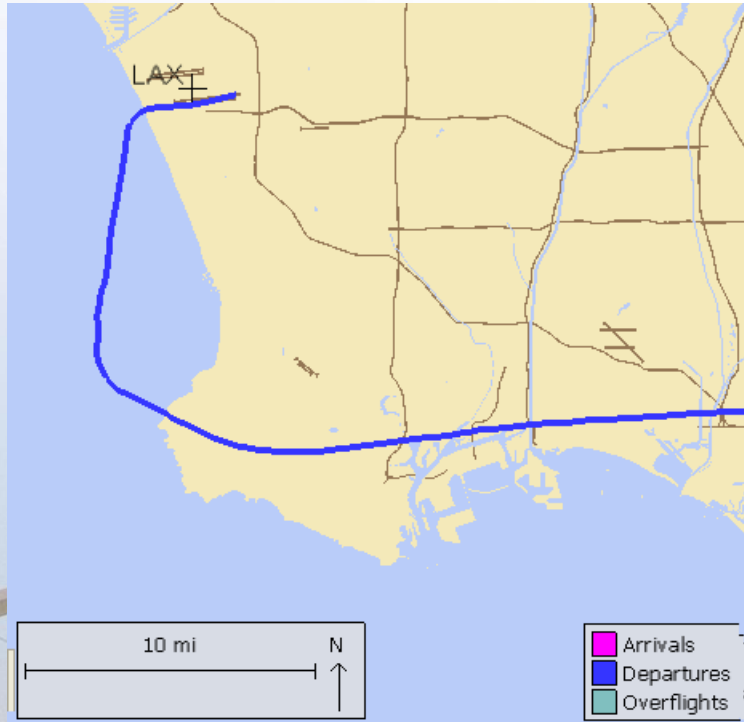


Go-Arounds – Not Maintaining RWY Headings

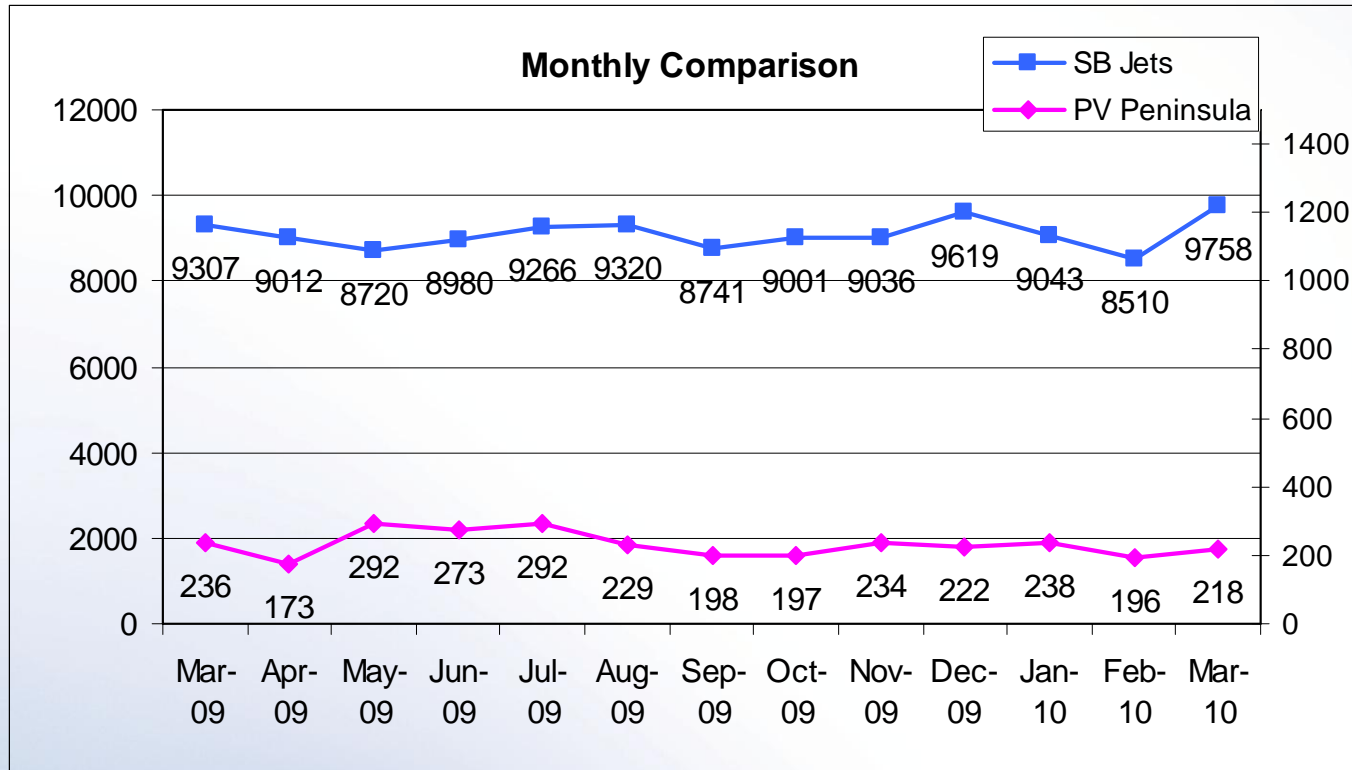


Palos Verdes Peninsula – Turboprop Overflights

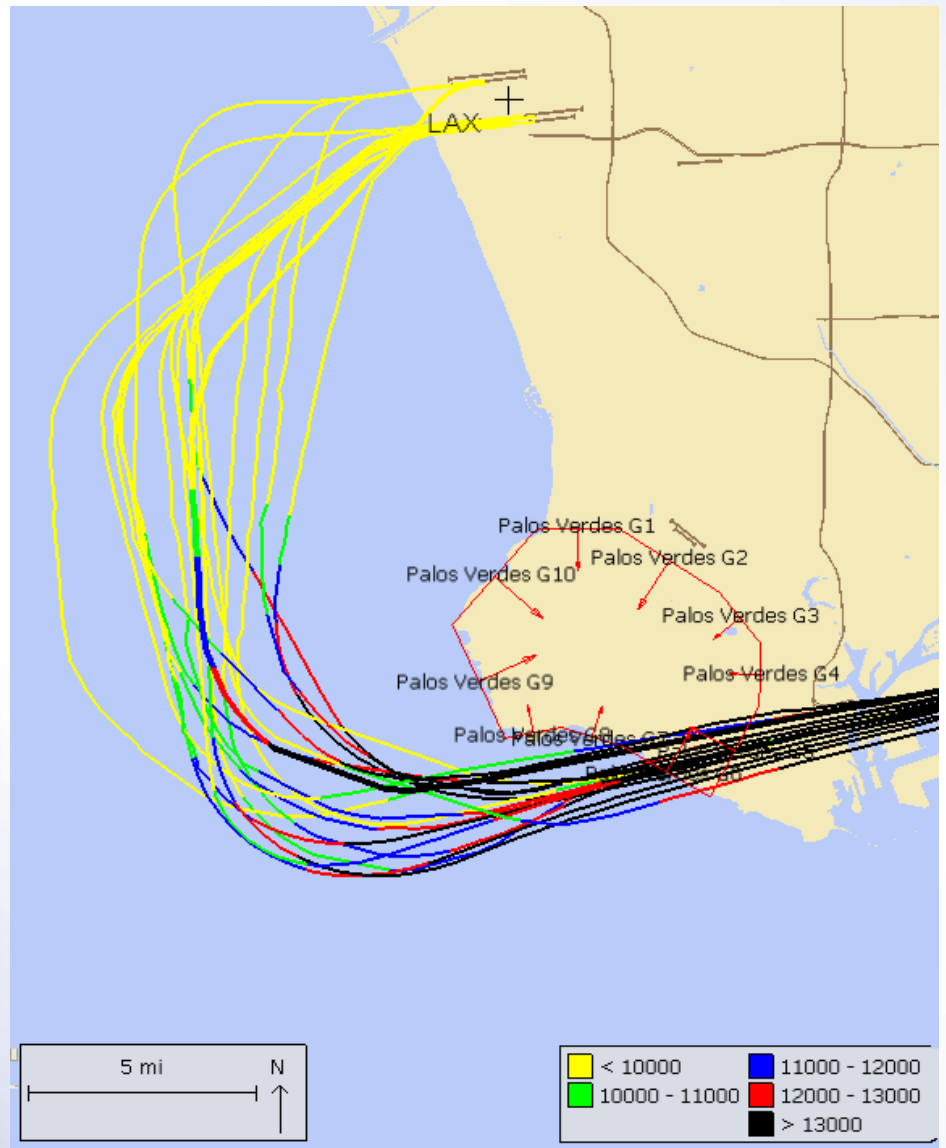
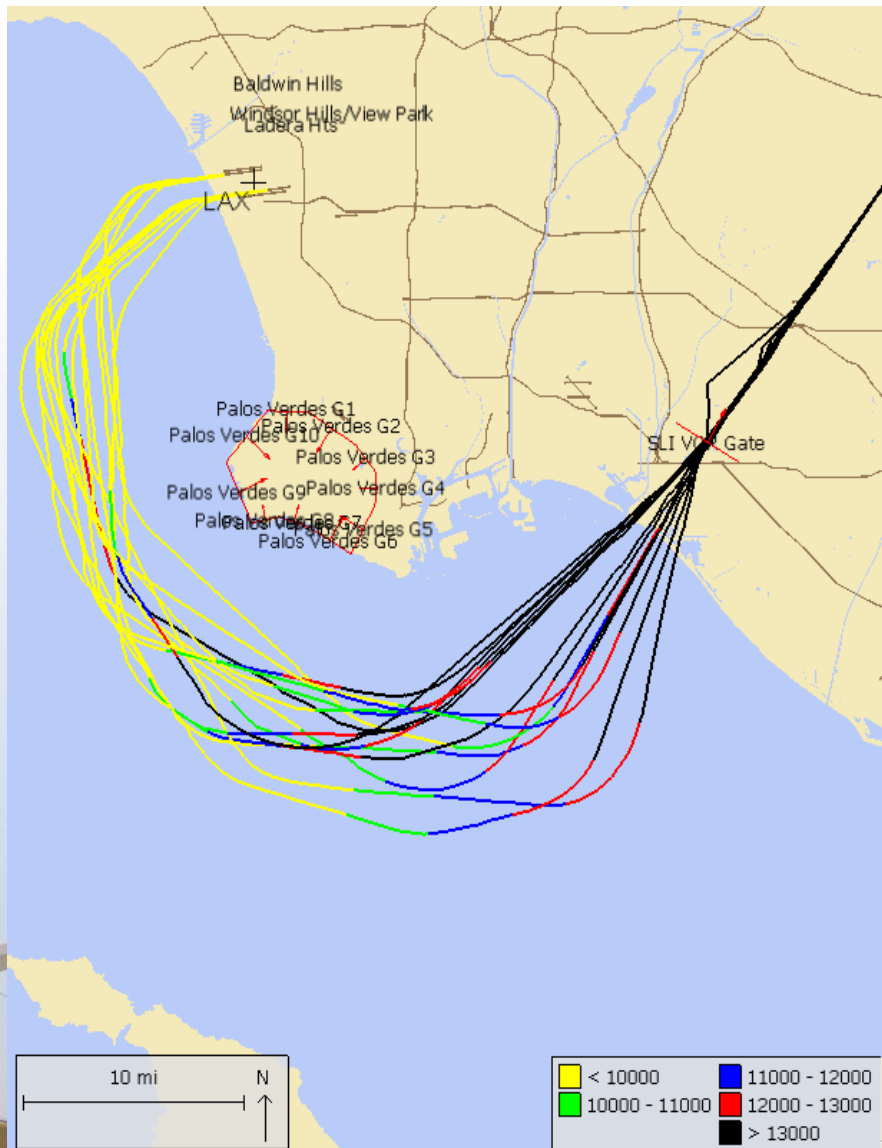
Monitoring southbound turboprops departing from LAX that overfly Peninsula



Palos Verdes Peninsula – Jet Overflights

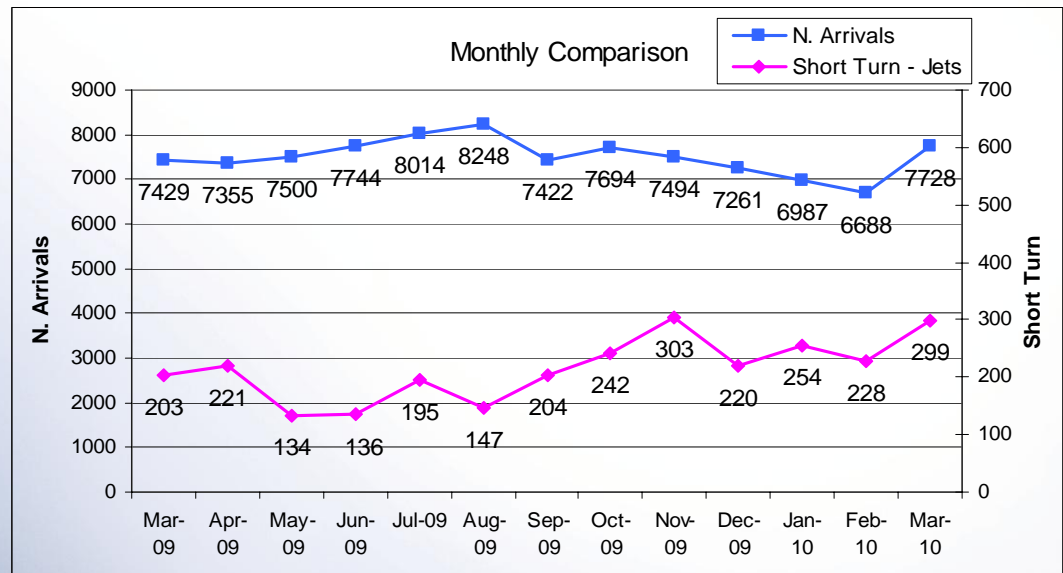
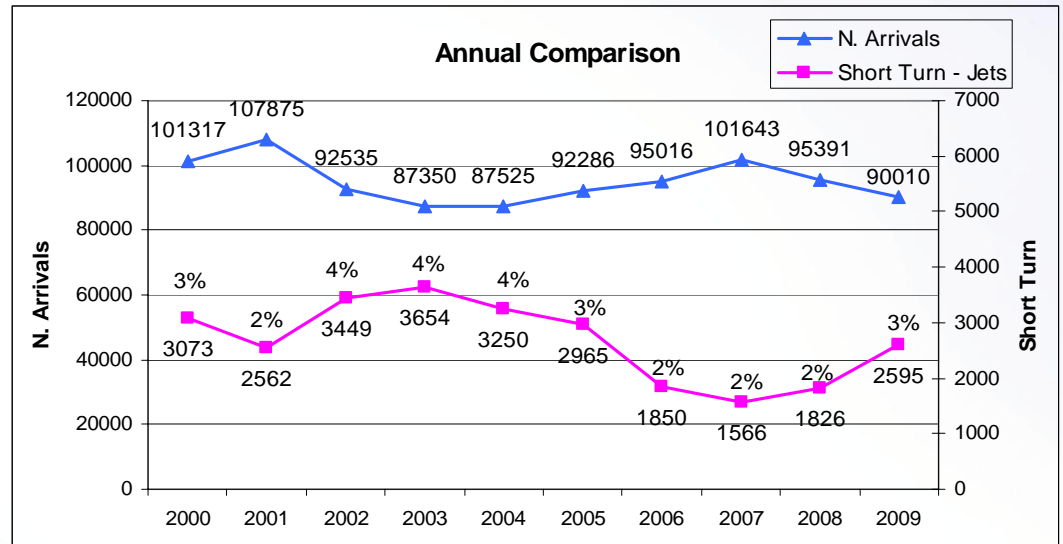
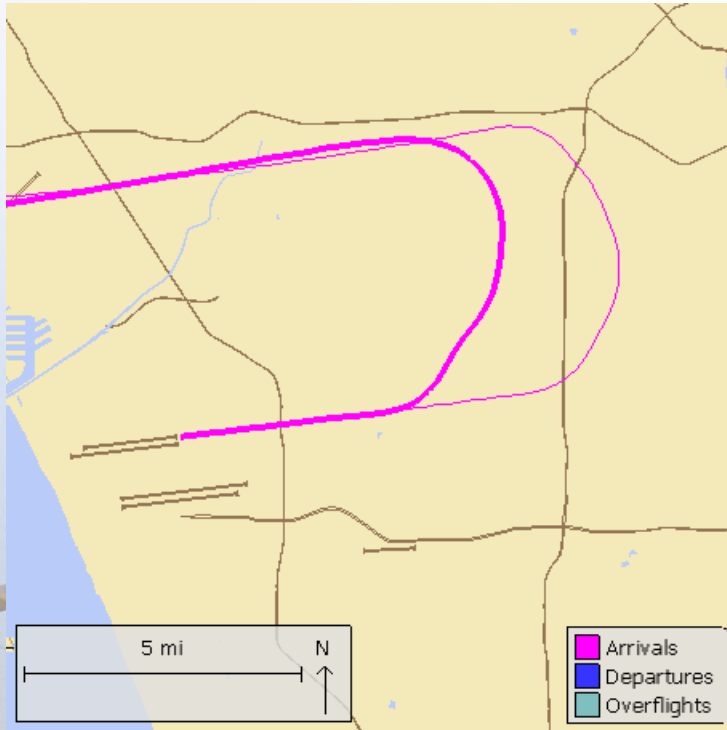


PV Jet Flight Tracks Comparison

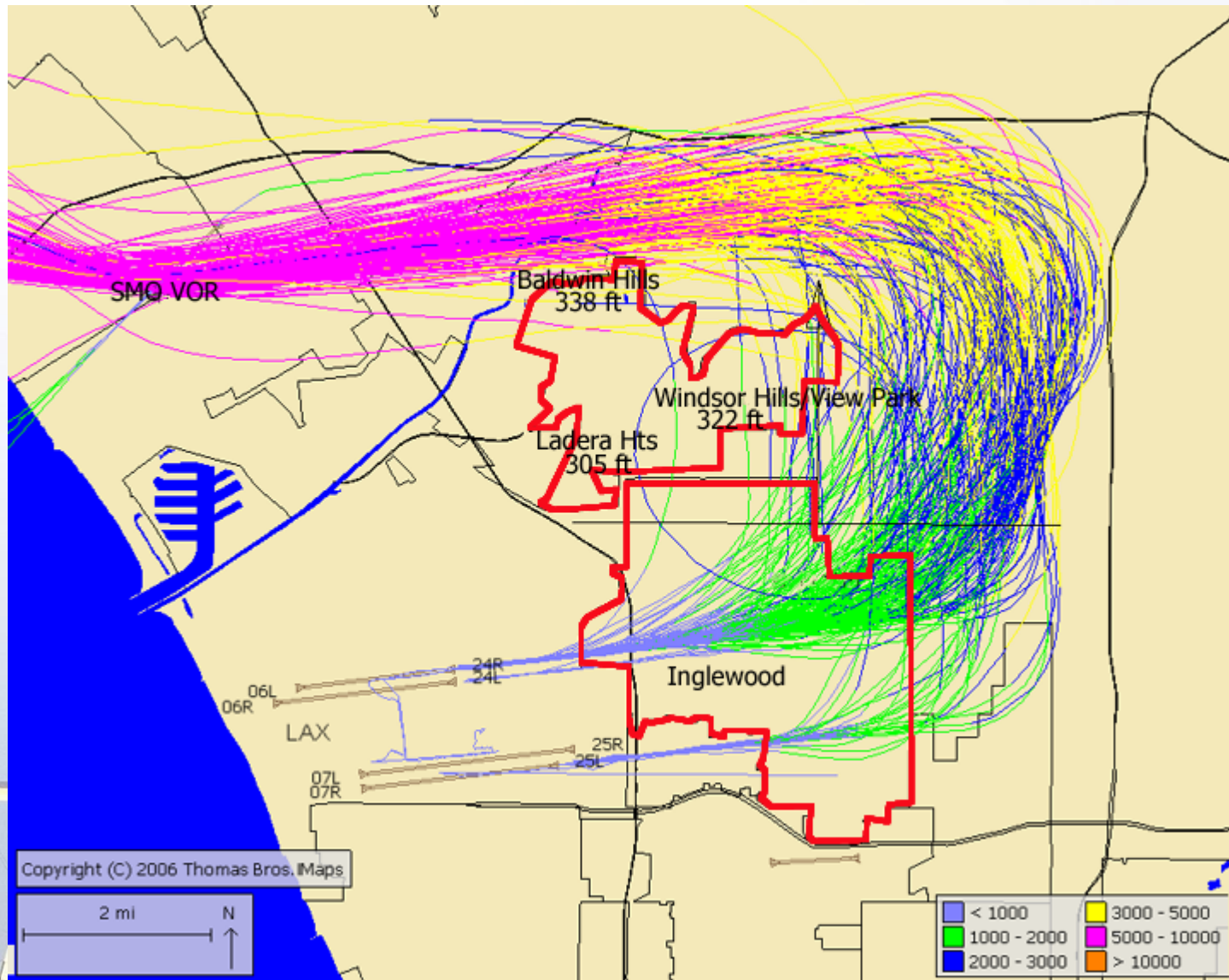


Short Turn Arrivals

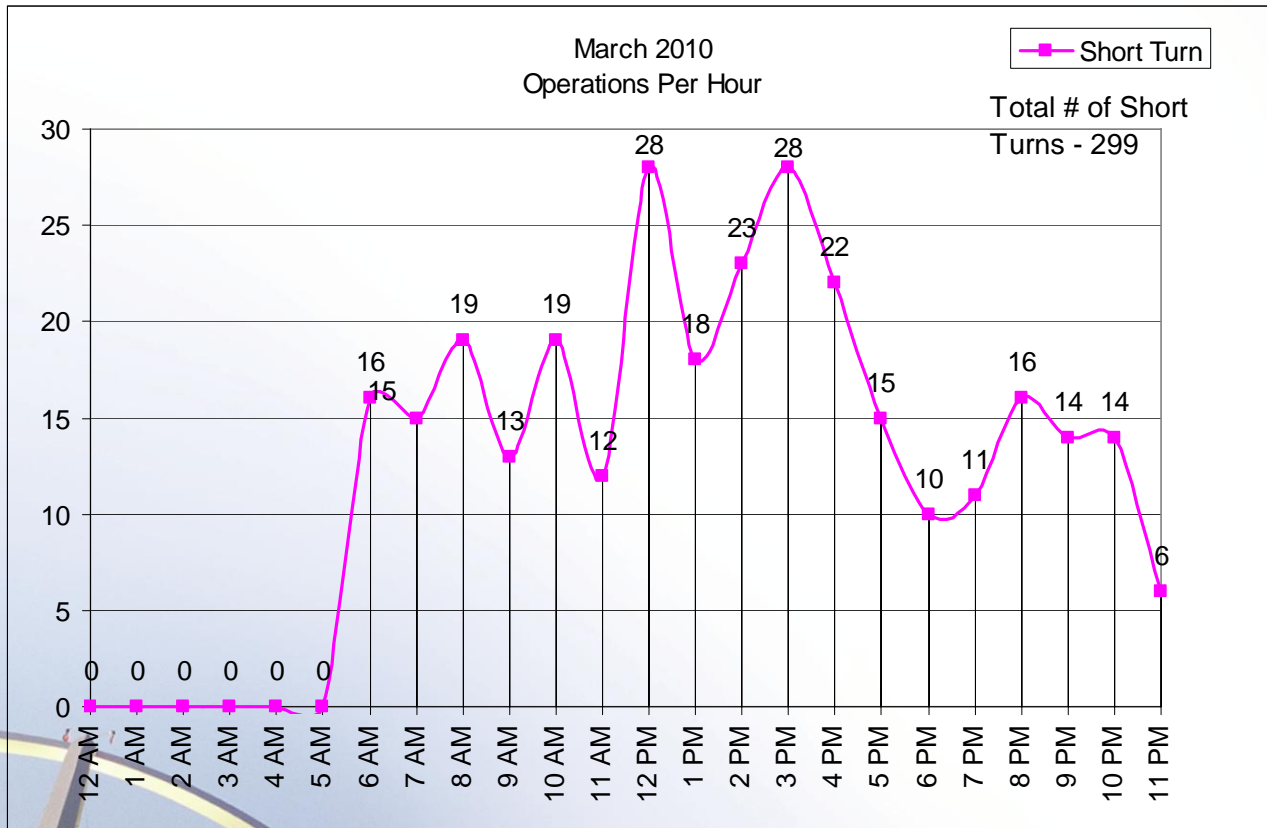
Arriving jet aircraft turning early prior to reaching the Harbor Freeway to land at LAX



Short Turn Arrival Flight Tracks

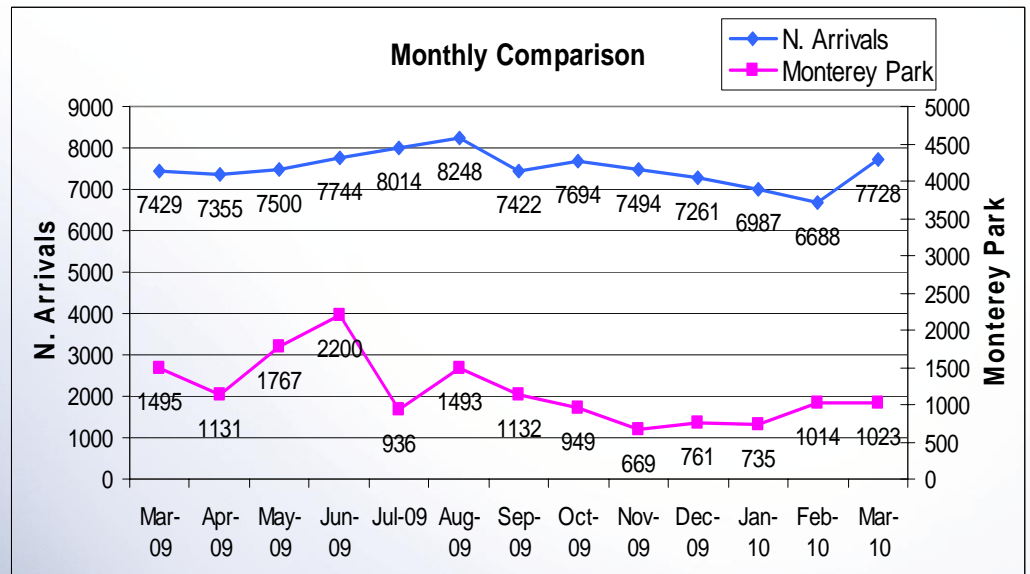
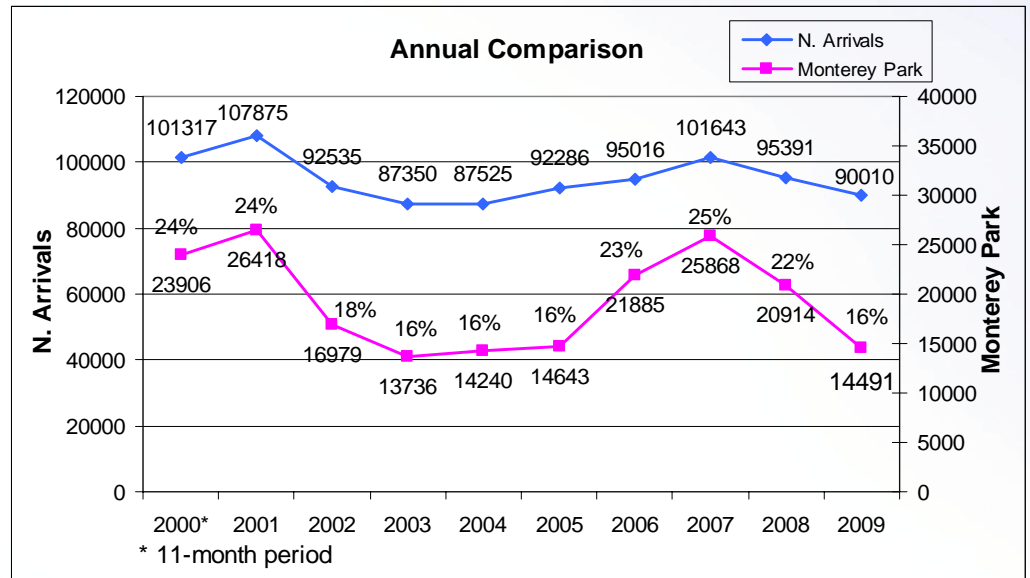
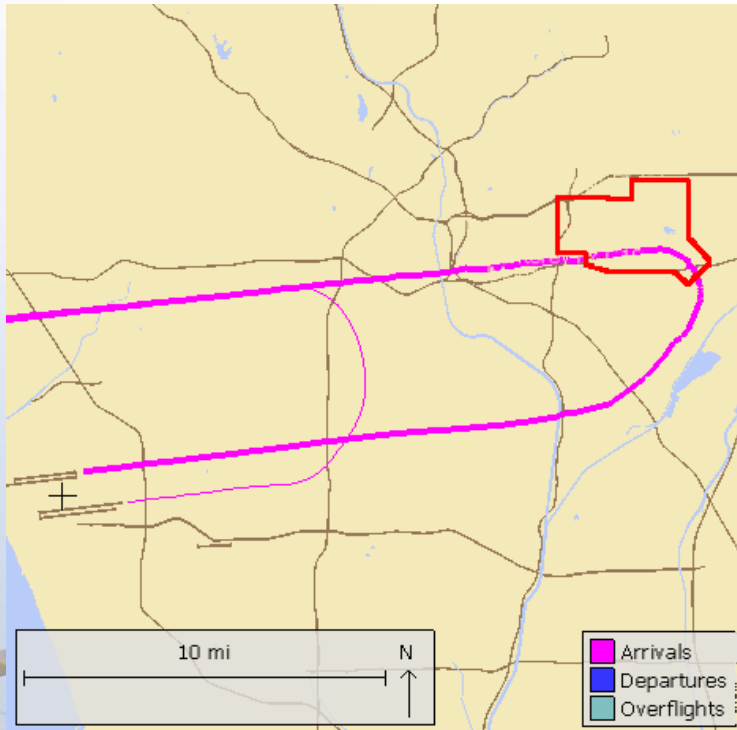


Time of Day – Short Turn March 2010



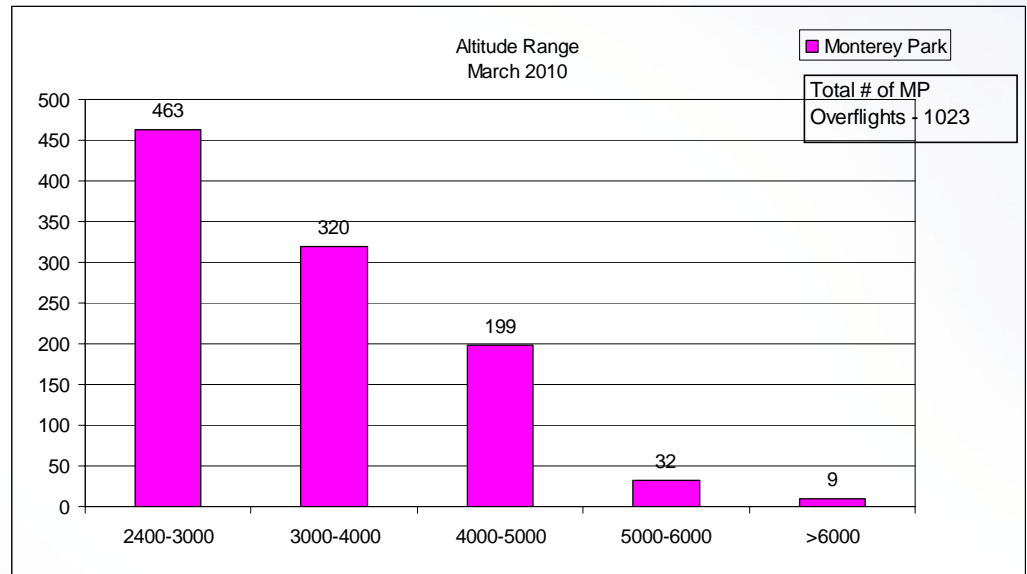
Extended Downwind Approach

Monitoring north arrivals extending downwind over Monterey Park boundary

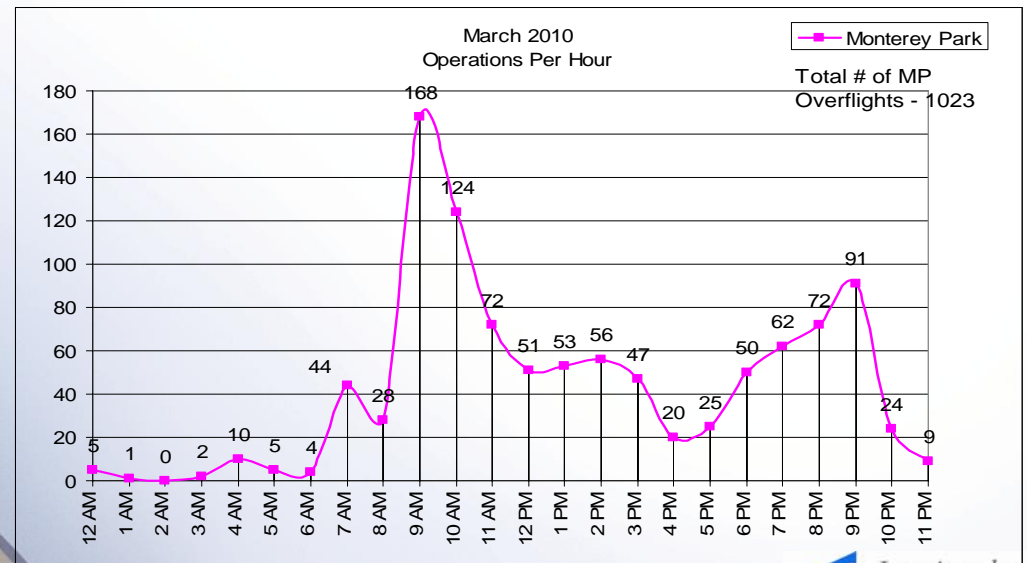


Extended Downwind Approach March 2010

Altitude over
Monterey Park

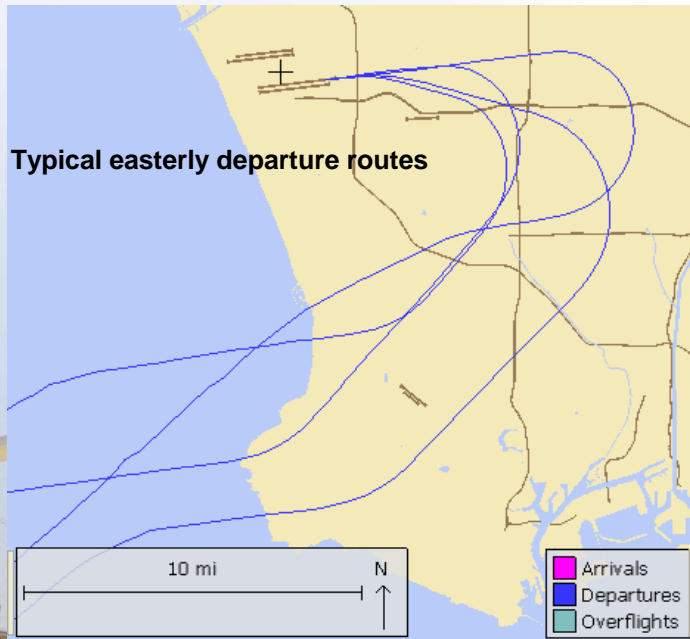


Number of
Operations By
Time of Day

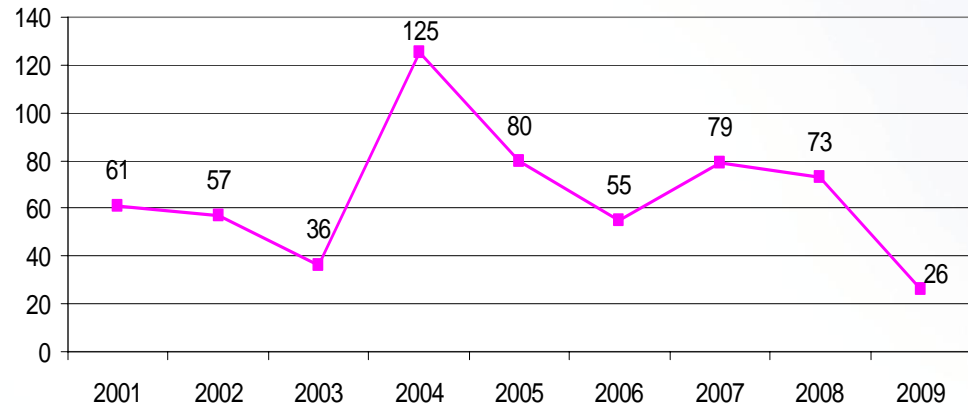


Non-Conforming East Departures Midnight to 6:30 AM

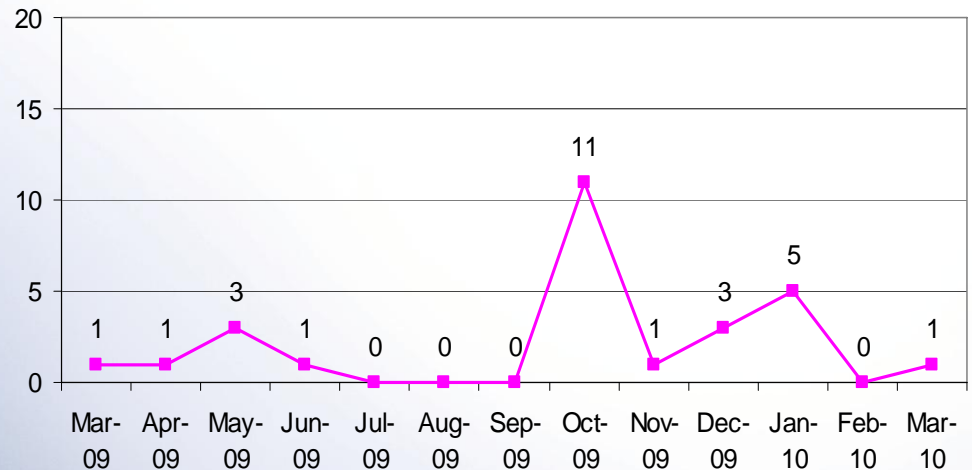
This report shows a summary of aircraft operations that depart to the east while the airport is still conducting westerly departures between midnight and 6:30 a.m. These individual easterly departures usually occur when the pilot of a heavy aircraft (e.g. B747s) determines that the tail wind is too great for the weight of the aircraft and requests to depart east into the wind for aircraft safety.



Annual Comparison

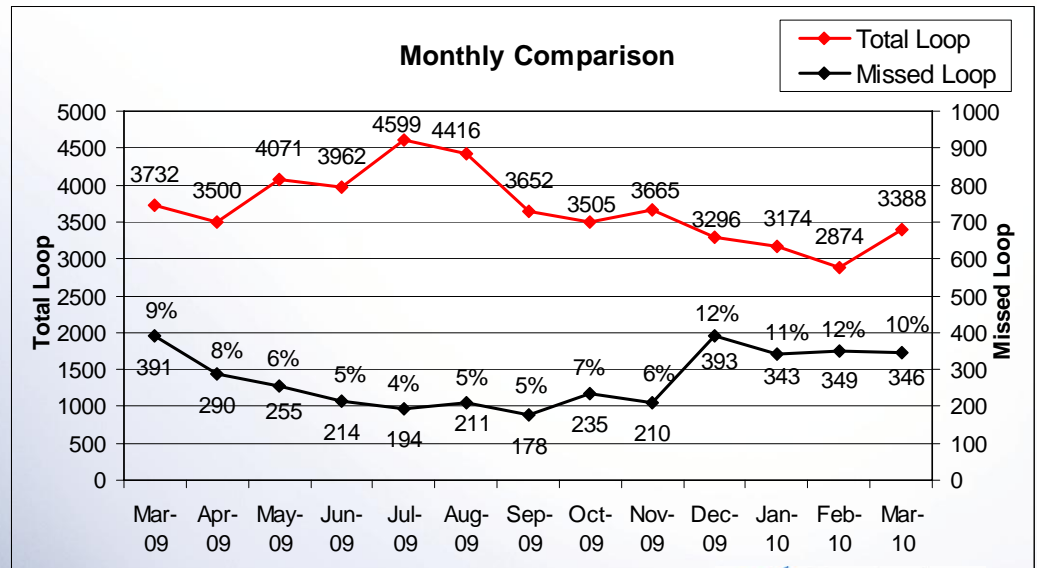
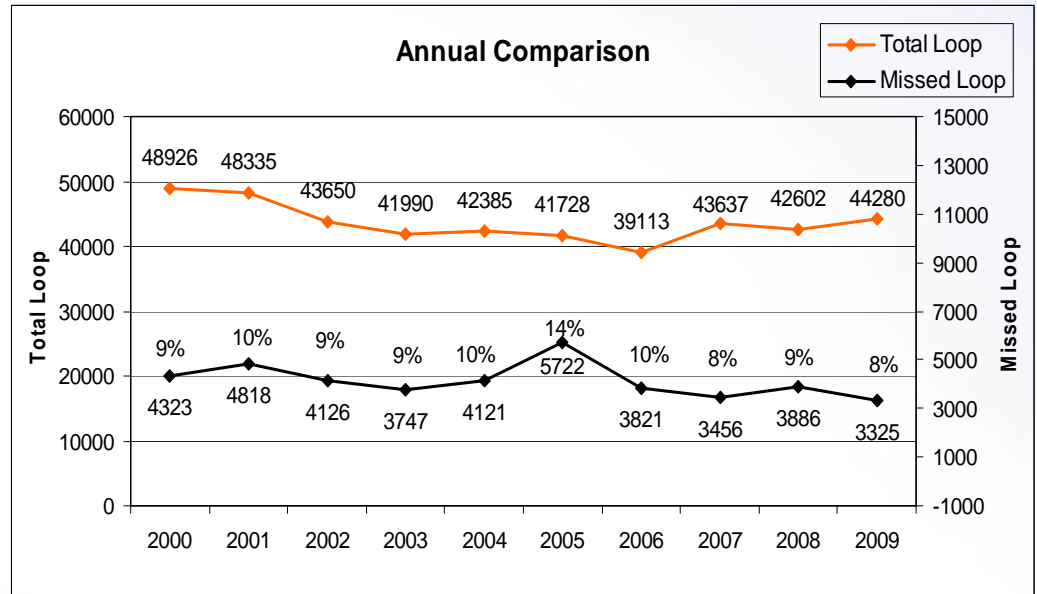
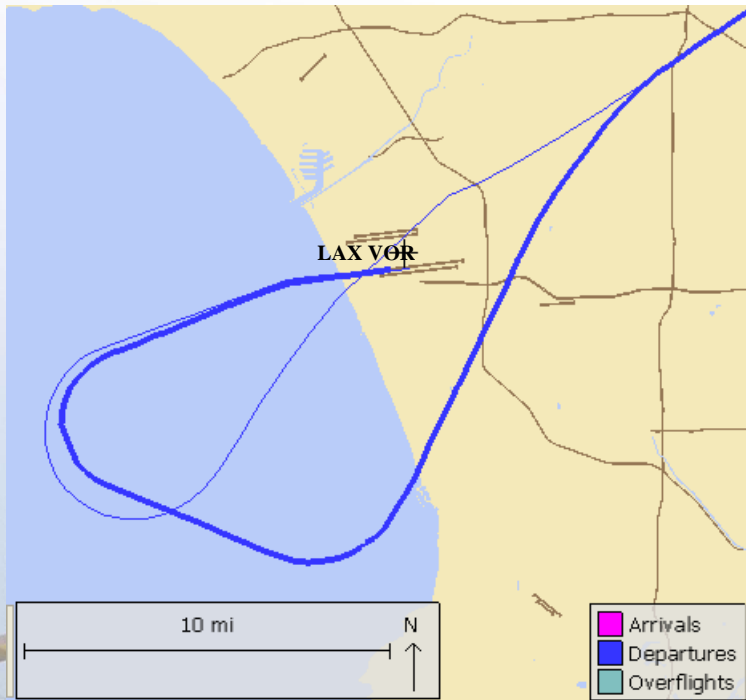


Monthly Comparison



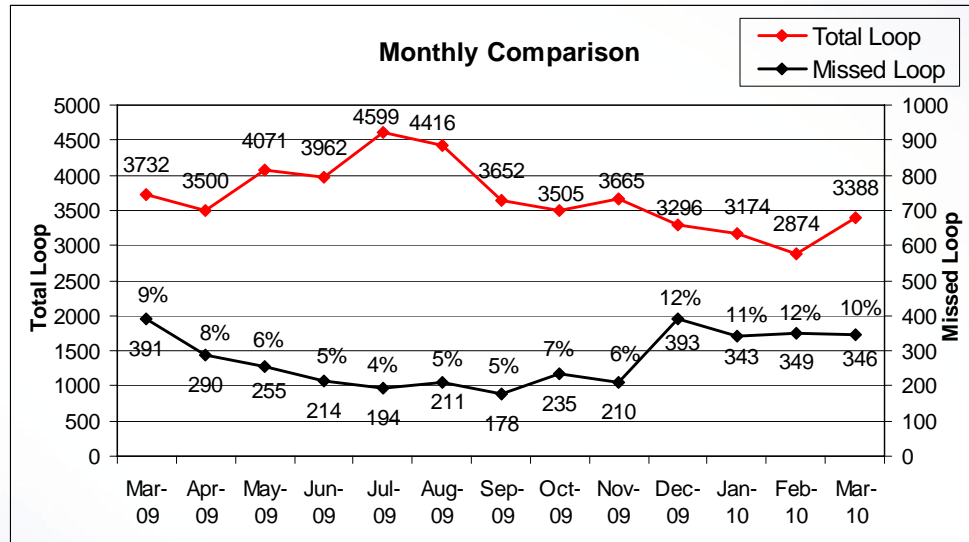
Missed LAX Loop Departure

Monitoring loop departures overflying communities

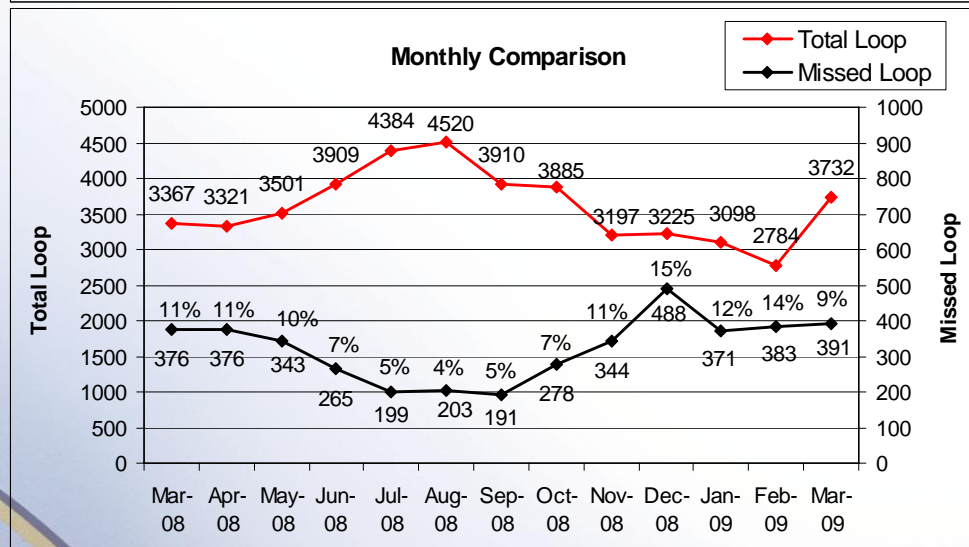


Missed LAX Loop Departure

Current
Year

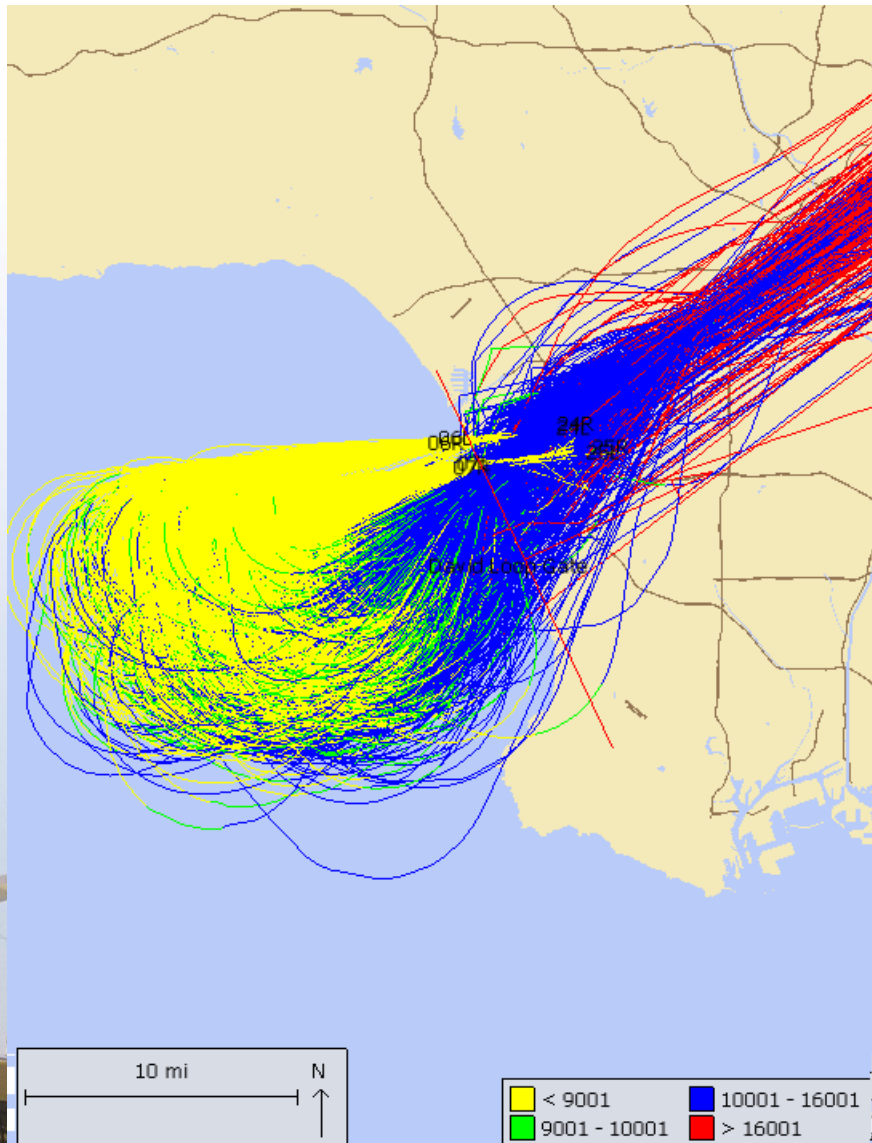


Previous
Year



LOOP - Altitude Information

July 09



December 09

