

Status Report Noise Mitigation Programs

Presentation to the LAX/Community
Noise Roundtable

May 9, 2012



Aircraft Noise Mitigation Programs at LAX

- ✈ Land uses around airports such as residences, schools, hospitals and places of worship, with a Community Noise Equivalent Level (CNEL) of 65 dB, are generally considered “incompatible” with the airport
- ✈ Los Angeles International Airport (LAX) has an FAA-approved Noise Compatibility Program, which makes certain residential areas eligible for FAA funding
- ✈ LAWA also provides supplemental funding for the residential programs, and certain school mitigation efforts

How Noise is Mitigated

Typical Sound Insulation Techniques:

- Replacing windows, and doors (including hardware and weather-stripping)
- Adding insulation in attics, and installing baffles at attic vents
- Installing glass fireplace doors, and chimney top dampers
- Installing and/or improvements to HVAC systems, as appropriate
- Target of 45 dB interior noise level, and/or a 5 dB reduction

Typical Residential Acquisition:

- Purchase properties in areas zoned for commercial or industrial uses
- Redevelop parcels per local planning and zoning
- The Cities of Los Angeles and Inglewood have acquisition programs
- El Segundo and the County of Los Angeles do not

LAX Program Participants

Residential Programs

- City of El Segundo
- City of Inglewood
- City of Los Angeles
- County of Los Angeles

School Programs

- Inglewood Unified School District
- Lennox School District

Program Governance and Funding

Federal -Aviation Noise and Safety Act (ANSA) - (1979). Federal Funding from Airport Improvement Program (AIP) funds for Noise Compatibility Programs

State of California Code of Regulations, Title 21, Subchapter 6, "Airport Noise Standards" - (1970)

City of Los Angeles - BOAC Resolution No. 21481 - (2001) Provides supplemental funding and guidelines to FAA-approved grants for Noise Compatibility Programs. Funding may be provided by Passenger Facility Charges (PFCs)

Program Governance and Funding

Stipulated Settlement Agreement (2006)

- Provides up to \$240M in noise mitigation funding (Cities of El Segundo, Inglewood, County of LA)
- Initial disbursement for 2006 and 2007 fixed
 - City of El Segundo: \$7.45M Each Year
 - County of Los Angeles: \$15M in 2006 and \$5.6M in 2007
 - City of Inglewood: \$12.25M Each Year
- “Future Funding” for 2008 – 2015
 - Annual funding CAP: \$22.5M shared by 3 jurisdictions
 - Maximum \$180M over 8 year period
 - Share of annual funds based on ratio of impacted residences over total (no one jurisdiction > 41%)
 - El Segundo share: \$5.58M
 - County of LA share: \$7.71M
 - Inglewood share: \$9.21M

Program Governance and Funding

Stipulated Settlement Agreement (2006)

- Other benefits directly related to noise mitigation:
 - End-of-block soundproofing
 - Suspension of aviation easements
 - Purchase of noise easements for properties located in the $\geq 75\text{dB}$ CNEL noise contour
 - Traditional Places of Worship

Program Governance and Funding (Cont.)

Community Benefits Agreement (2005)

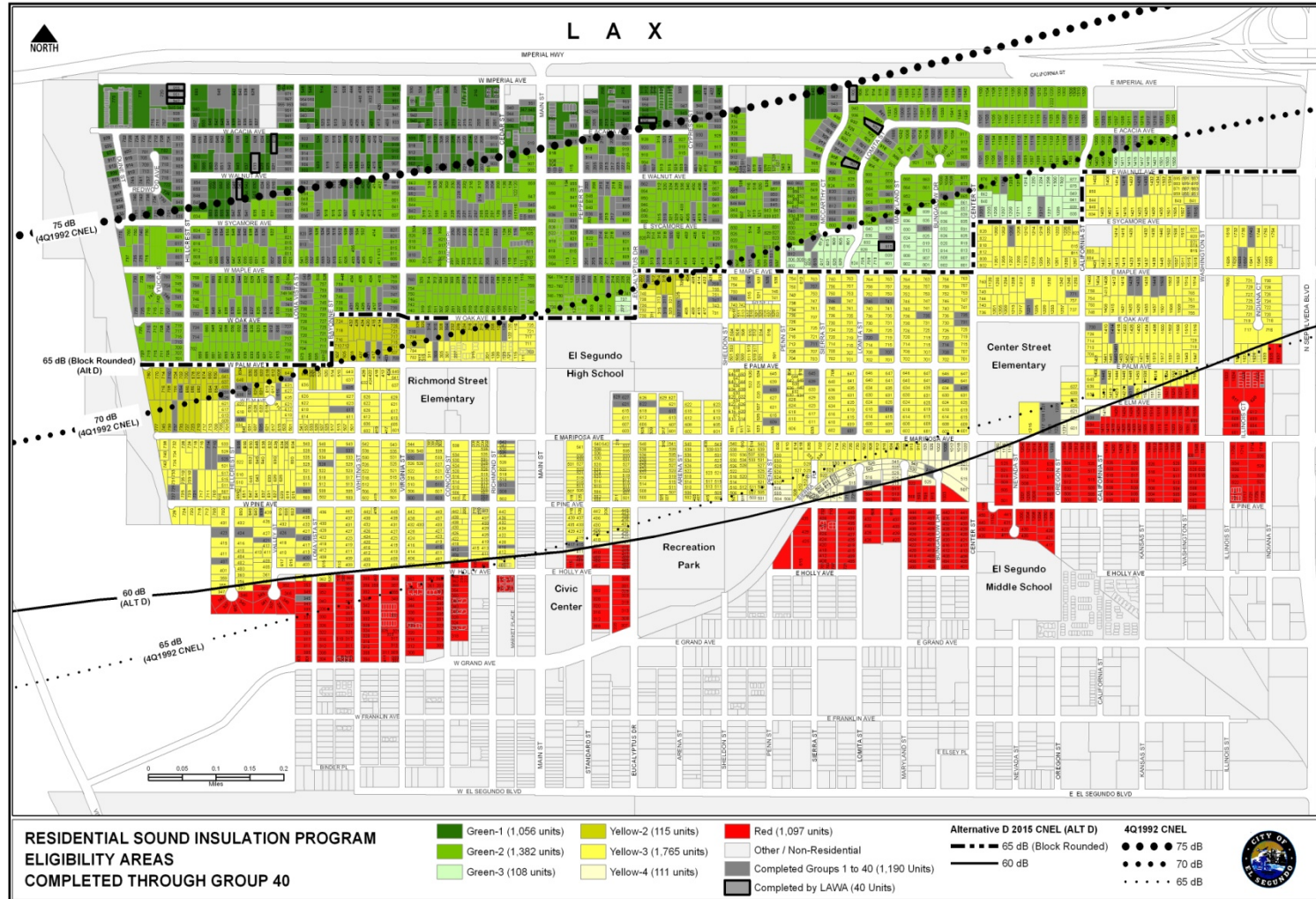
- Minimum funding for LA County and City of Inglewood
 - \$4.275M - LA County
 - \$4.275M – Inglewood

- Settlement Agreement (2005) – Lennox School District

- Settlement Agreement (2005) – Inglewood School District

- Other benefits directly related to noise mitigation:
 - End-of-block soundproofing
 - Suspension of aviation easements
 - Places of Worship

City of El Segundo



City of El Segundo

Program Status: 1993-2012

Total Funding	Total Units Mitigated	To Be Mitigated	2009-2011 Funding	2009-2011 FAA Funding	2009-2011 LAWA Funding	Units mitigated 2009-2011	Average Cost/per unit **
\$73,007,558	1,030	3,507	\$18,377,845	\$12,790,245	\$5,597,500	294	\$62,510

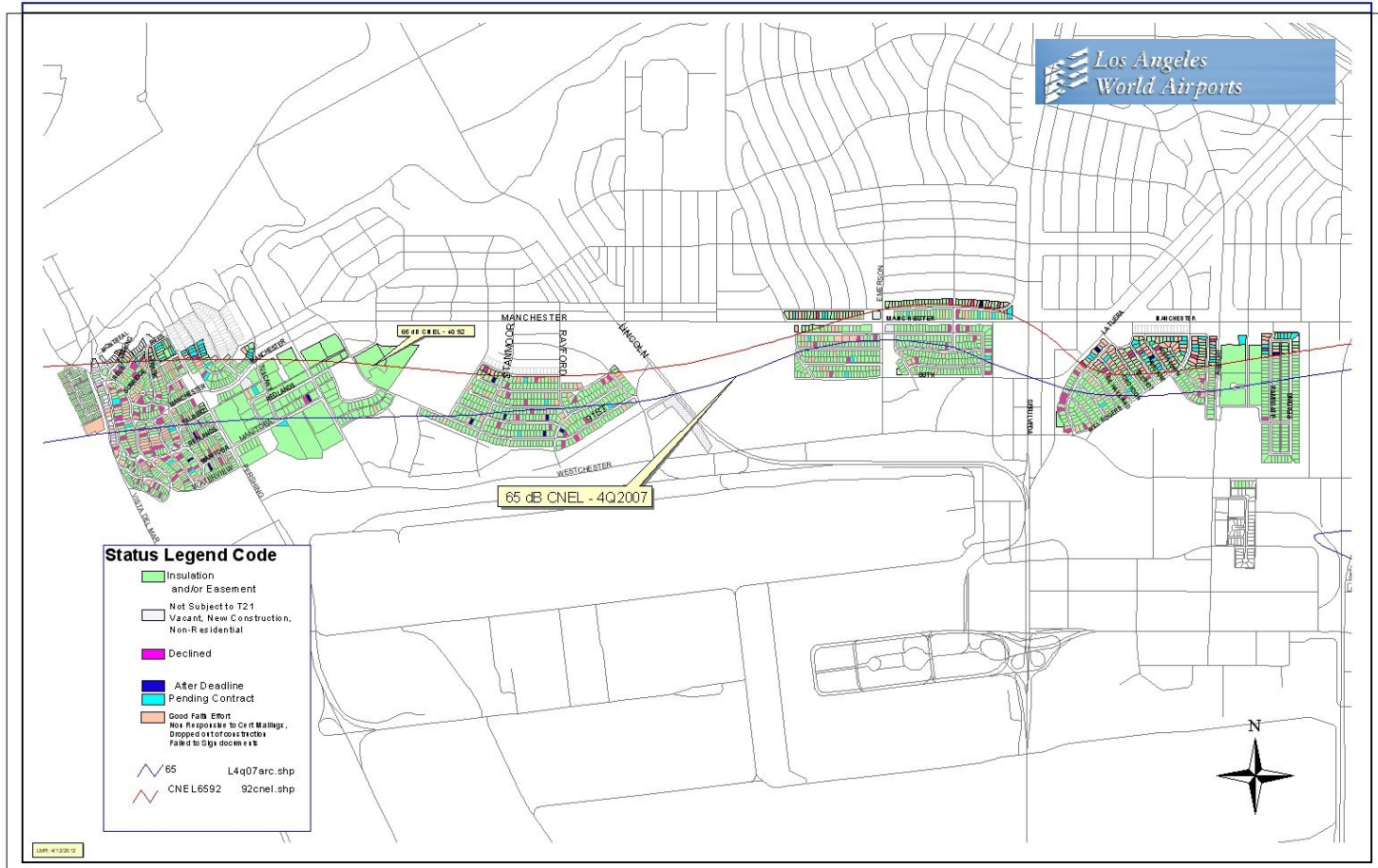
* El Segundo began accepting 20% match from LAWA with the signed Stipulated Settlement Agreement in 2006.

** This figure is based on the amount of funding provided divided by the number of units mitigated, and may not accurately reflect actual per unit costs.

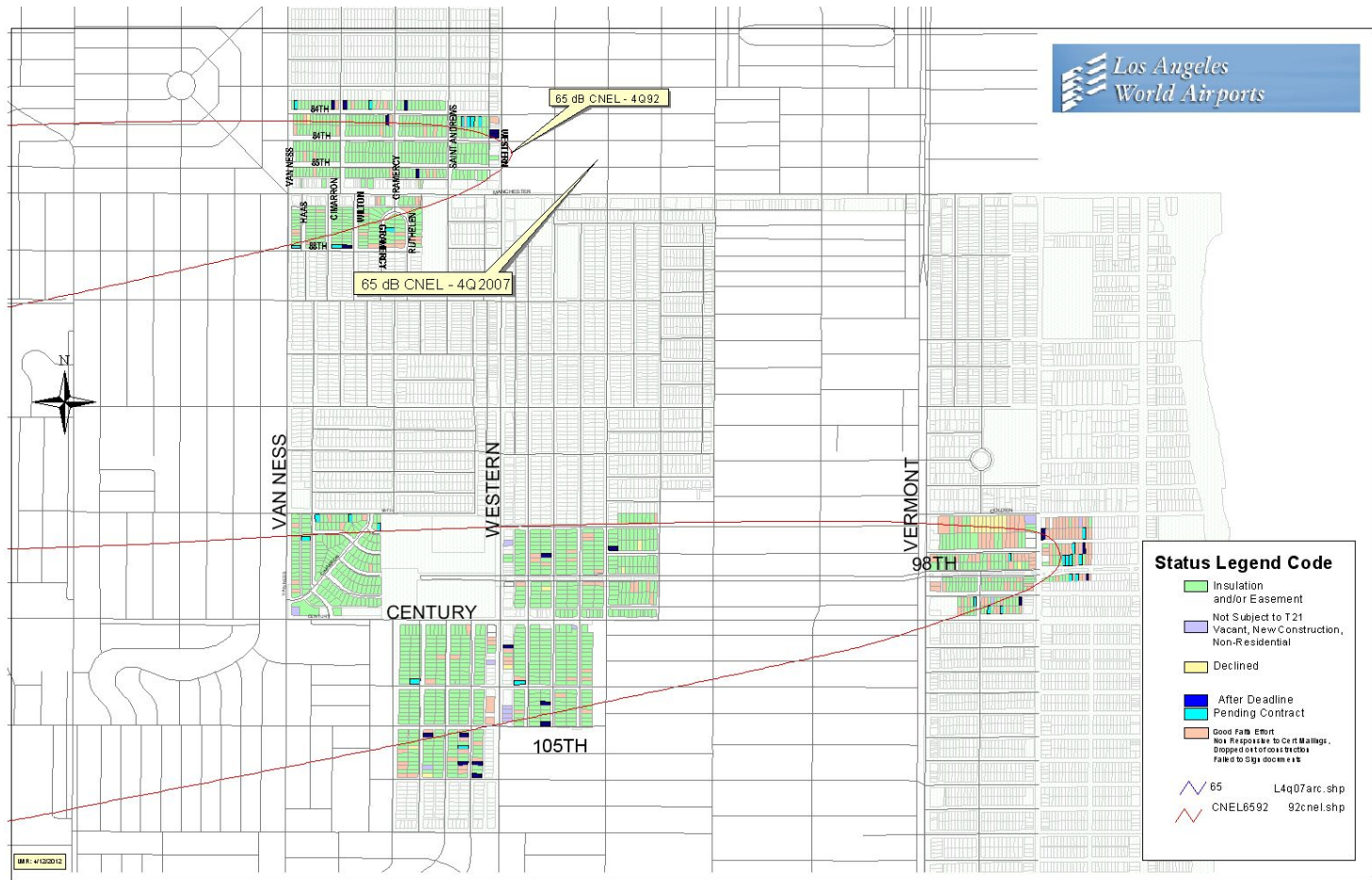
→ Recent Action:

- \$5.6 million in LAWA funding provided in August 2011 combined w/FAA funds of \$12 million for 406 units.

City of Los Angeles Council District No. 11



City of Los Angeles Council District No. 8



City of Los Angeles

Program Status: 1997-2012

Total Funding	Total Units Mitigated	To Be Mitigated	2009-2011 Funding*	Units mitigated 2009-2011	Average Cost/per unit **
\$148,000,000	7,342	380	\$16,940,767	781	\$21,691

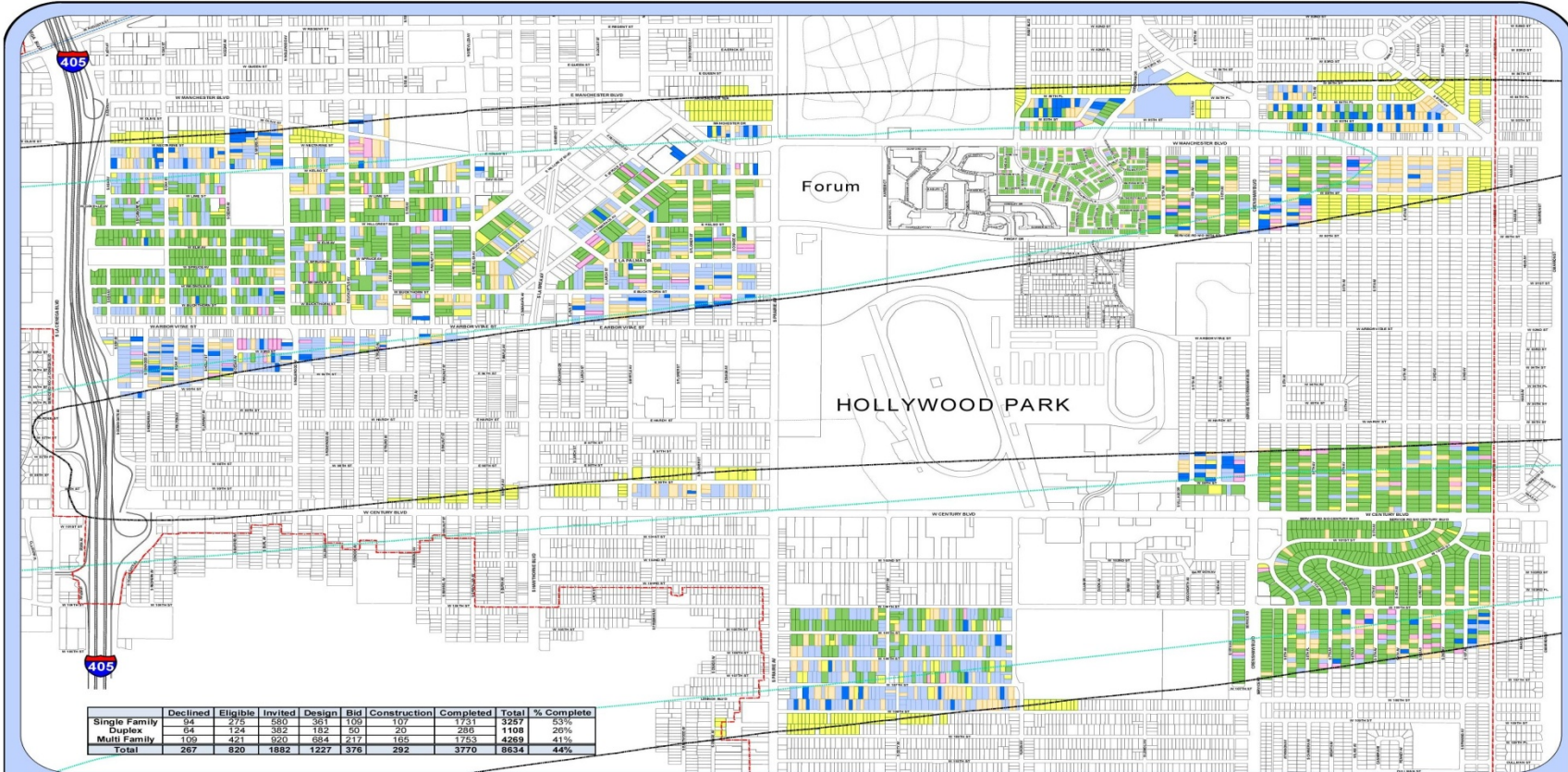
* Reflects construction costs plus 20% for administration

** This figure is based on the amount of funding provided divided by the number of units mitigated, and may not accurately reflect actual per unit costs.

→ Recent Actions:

- \$1.3 million funding provided for 56 units in CD 11 in May 2012.
- Funding of \$1.2 million funding provided in November 2011 for 57 units in CD 8.

City of Inglewood



	Declined	Eligible	Invited	Design	Bid	Construction	Completed	Total	% Complete
Single Family	14	275	580	381	100	107	1743	3267	53%
Duplex	64	124	382	182	50	20	286	1108	26%
Multi Family	109	421	620	684	217	165	1753	4289	41%
Total	267	820	1882	1227	376	292	3770	8634	44%

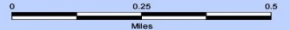
CITY OF INGLEWOOD
RESIDENTIAL SOUND INSULATION PROGRAM

- ELIGIBLE
- INVITED
- DESIGN
- BID
- CONSTRUCTION
- COMPLETE
- CITY BOUNDARY

Cumulative Noise Equivalency Level (CNEL) Contours

- ~ LAWA 4Q 1992 Contour
- ~ FAA 2015 Contour

PROGRESS STATUS REPORT



CREATED BY: RESIDENTIAL SOUND INSULATION PROGRAM
 UPDATED: MAY 2012



City of Inglewood

Program Status: 1992-2012

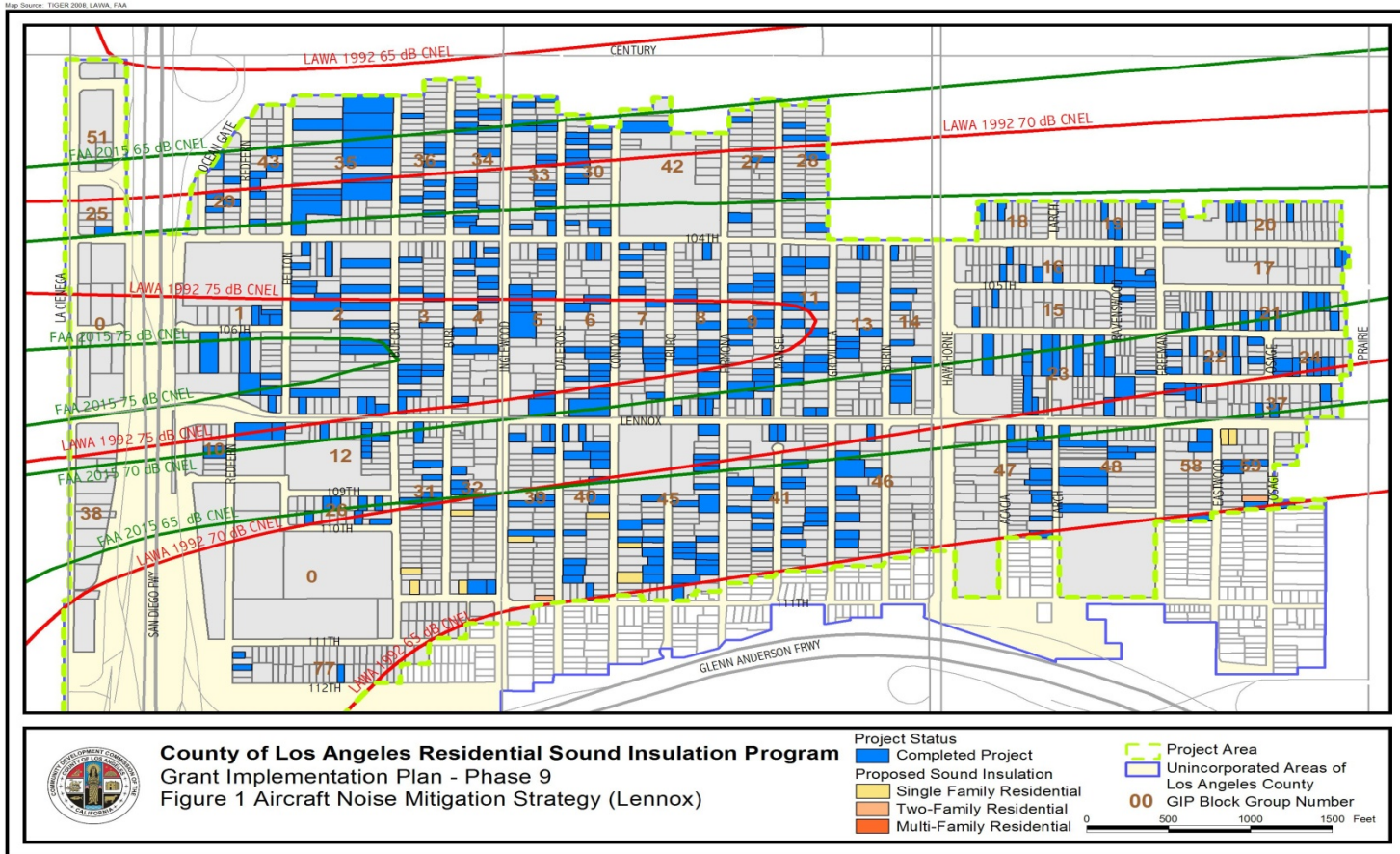
Total Funding	Total Units Mitigated	To Be Mitigated	2009-2011 Funding	2009-2011 FAA Funding	2009-2011 LAWA Funding	Units Mitigated 2009-2011	Average Cost/per unit **
\$182,719,402	4,000	4,700	\$49,200,000	\$40,000,000	\$9,200,000	723	\$68,050

** This figure is based on the amount of funding provided divided by the number of units mitigated, and may not accurately reflect actual per unit costs.

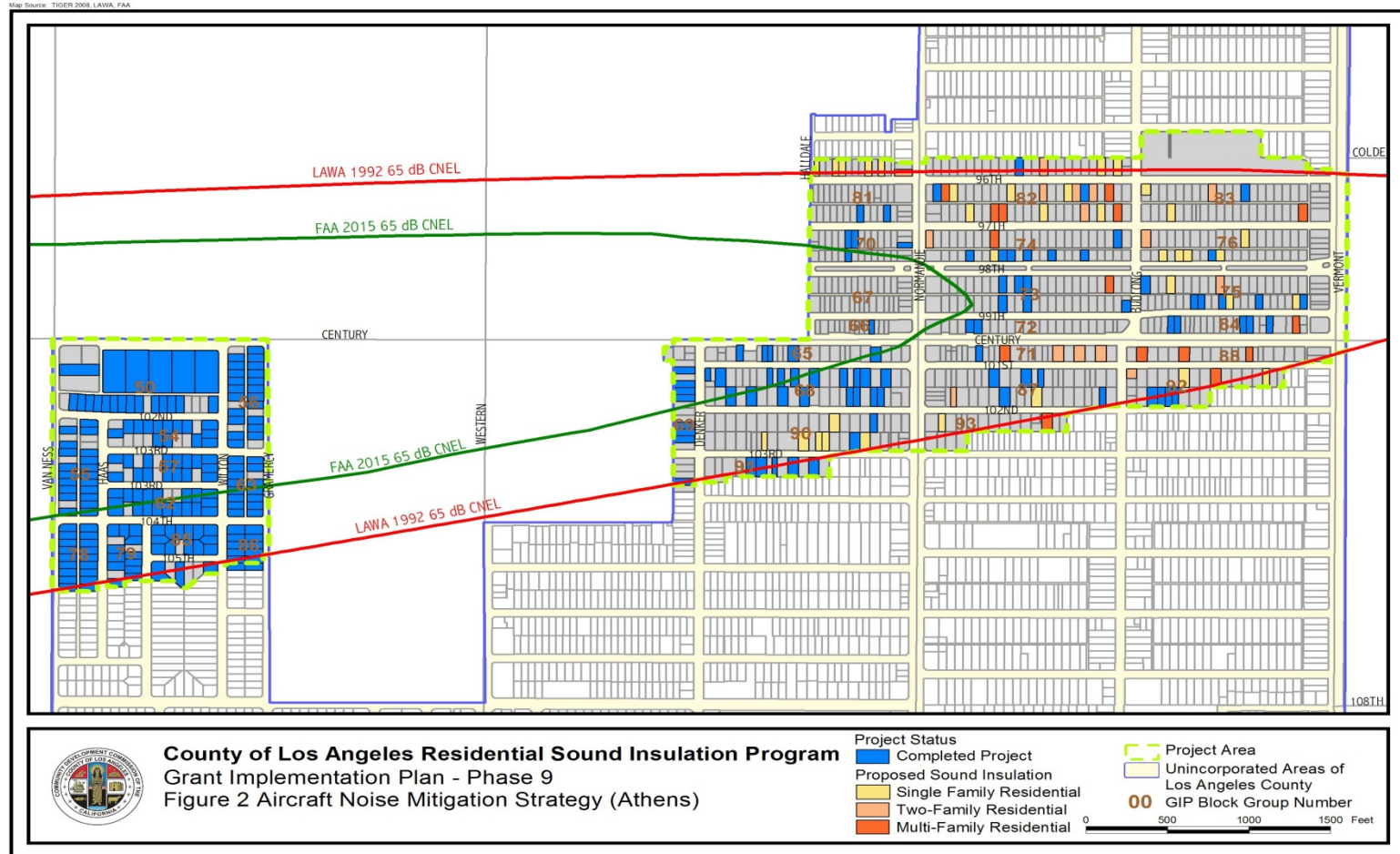
→ Recent Actions:

- LAWA is working with City of Inglewood to reconcile findings from the 2010 audit in order to facilitate additional program funding.

County of Los Angeles Neighborhood of Lennox



County of Los Angeles Neighborhood of Athens



County of Los Angeles

Program Status: 1992-2012

Total Funding	Total Units Mitigated	To Be Mitigated	2009-2011 Funding	2009-2011 FAA Funding	2009-2011 LAWA Funding	Units Mitigated 2009-2011	Average Cost/per unit
\$94,600,000	2,038	5,358	\$22,500,000	\$15,000,000	\$7,500,000	774	\$29,070

** Note: Per unit costs are based on the amount of funding provided divided by the number of units mitigated, and may not accurately reflect actual per unit costs.

➤ Recent Actions:

- \$7,500,000 'LAWA only' grant provided in November of 2011 for 159 units

School Mitigation Programs

Lennox School Districts



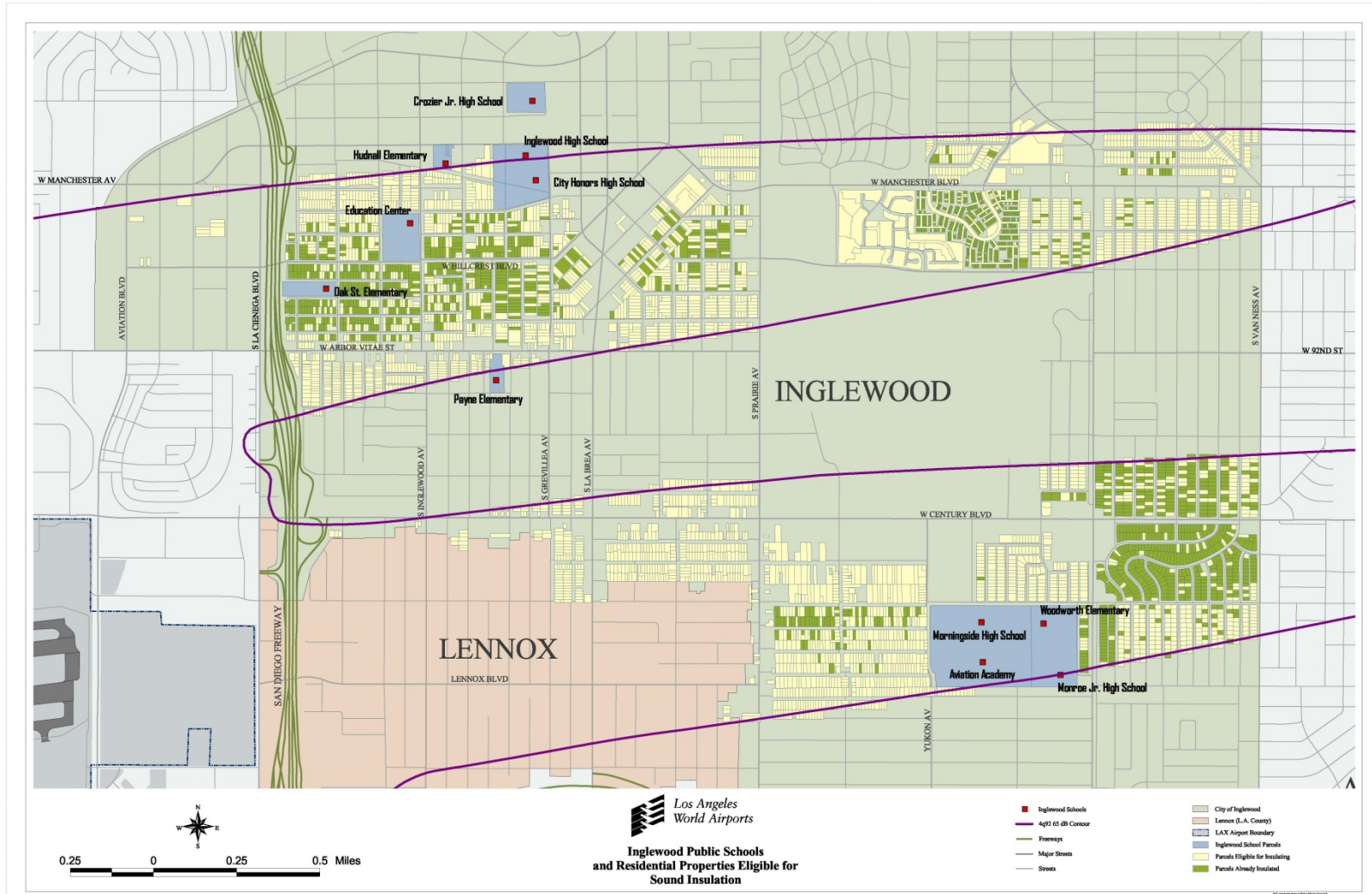
School Mitigation Programs

Lennox School Districts

- Per Settlement
 - 13 Schools
 - Up to \$111,000,000
- FAA has approved a PFC application for \$35 million
- December 2010 \$1.2 Million
 - Huerta Middle School
- December 2011 \$10 Million
 - 1st Year Program
 - Felton Elementary, Animo High School, Lennox Middle School, New school construction north of Jefferson

School Mitigation Programs

Inglewood Unified School Districts



School Mitigation Programs

Inglewood Unified School Districts

- Per Settlement
 - 10 Schools
 - Up to \$118,000,000
- No funding received to date
- PFC application has not yet been submitted to FAA
 - LAWA working with IUSD and FAA to complete application

Questions?

