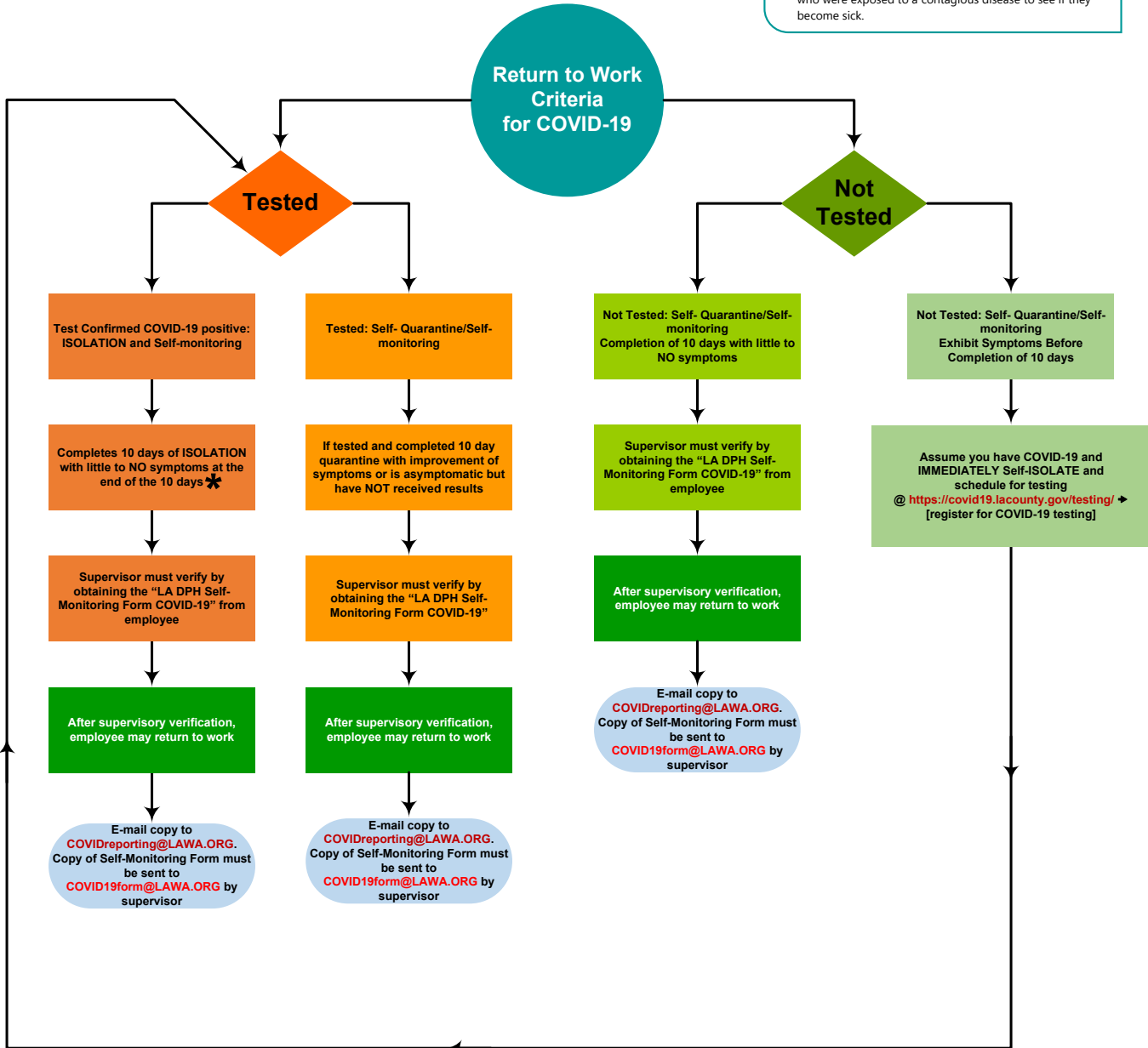


UPDATED!

**Return to Work Criteria for Suspected or Confirmed COVID-19 Exposed Employees
(Interim Guidance: Unvaccinated Employees)**

Isolation and Quarantine as Defined by CDC

- **Isolation** separates sick people with a contagious disease from people who are not sick. If you are sick you **MUST** isolate yourself from any contact with other persons.
- **Quarantine** separates and restricts the movement of people who were exposed to a contagious disease to see if they become sick.



AS OF 2/2/2022



NOTES:

- This information may be adapted or changed as state and local health departments respond to rapidly changing circumstances.

* 10 days commence at onset of symptoms; if no symptoms then 10 days from testing date.